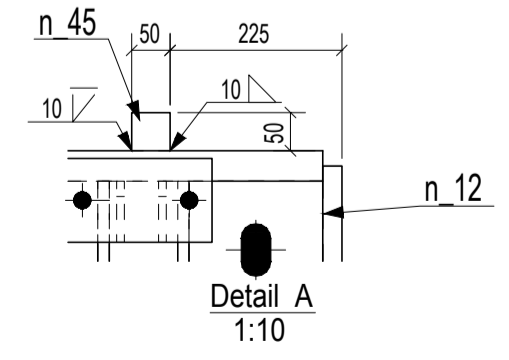
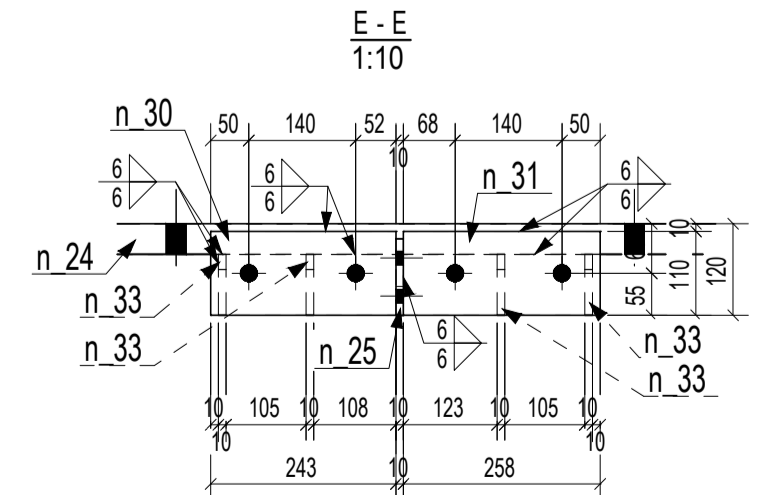


Position (Assembly No.)	No. of parts (for 1 assy)	Name	Length	Width	No. of parts total	Material	Weight 1 part (kg/pcs)	Weight total in assy (kg)
SO1CF_15_1		P18*1485						
n.32	2	P10*110	220	10	2	S355J2	1.9	3.8
n.26	6	P10*95	99	10	6	S355J2	0.7	4.1
n.37	2	P15*144	190	15	2	S355J2	3.2	6.4
n.45	1	P50*90	440	50	1	S355J2	8.5	8.5
n.40	12	P15*90	130	15	12	S355J2	0.8	9.2
n.25	5	P10*100	321	10	5	S355J2	2.0	10.1
n.33	24	P10*80	100	10	24	S355J2	0.4	10.2
n.30	5	P10*110	242	10	5	S355J2	2.1	10.5
n.31	5	P10*110	257	10	5	S355J2	2.2	11.1
n.13	2	P25*175	190	25	2	S355J2	6.5	13.1
n.3	1	P25*340	390	25	1	S355J2	26.0	26.0
n.4	1	P25*353	390	25	1	S355J2	27.0	27.0
n.42	4	P15*170	480	15	4	S355J2	9.0	35.9
n.5	2	P25*340	390	25	2	S355J2	26.0	52.0
n.12	2	P25*480	1260	25	2	S355J2	118.7	237.4
n.34	12	P15*216	1470	15	12	S355J2	33.1	397.5
n.8	1	P25*390	1260	25	1	S355J2	97.1	97.1
n.24	1	P40*480	1392	40	1	S355J2	2085.4	2085.4
n.1	1	P18*1485	1392	18	1	S355J2	2882.8	2882.8
WEIGHT OF ASSEMBLY (kg):							6812.0	
TOTAL WEIGHT OF ASSEMBLIES ON DRAWING (kg):							6812.0	



NOTES

MATERIAL: (acc. to EN 10025:2004): S235, S355
 PAINT: Basic paint - coating to a level of painting S2.3
 - anticorrosion protecting coating acc. to EN ISO 12944
 1st part - The shade will be determined by the investor
 2nd part - The shade will be determined by the investor

CLASS OF FABRICATION ACC. TO EN 1090-2 EXC3
GEOMETRIC TOLERANCES ACC. TO EN ISO 13020

WELDS TO BE MADE ACC. TO EN ISO 3834-2. ADDITIONAL WELDING MATERIAL "CHEVELY" SITE WELDS TO BE PAINTED
 ALL UNPAINTED WELDS TO BE HEIGHT (H) ± 1 (SMALLER THICKNESS OF WELDED MATERIALS)

MIN. WELD:

plate thickness	min. weld height
up to 5mm	3mm
5-10mm	4mm
10-15mm	5mm
over 15mm	6mm

HESCON s.r.o.
 PROJEKČNO-STAVITELSKÁ KANCELÁRIA
 Nám. sv. Almy 7269/20C, 811 01 TREŇČAN, SR
 TEL: +421 28 518 700
 MOB: +421 911 588 411
 WEB: www.hescon.sk
 EMAIL: hescon@hescon.sk

Project: **GESTAMP Strategic park Nitra**
 Building: **GESTAMP**
 Investor: **GESTAMP**

Client: **GESTAMP**
 Scale: **1:20**
 Designer: **HESCON TEAM**
 Drawn by: **Ing. T. Bažinský**
 Date: **22.08.2017**

Contract No.: **2017_002_40-50**
 Drawing No.: **SO1CF_15**