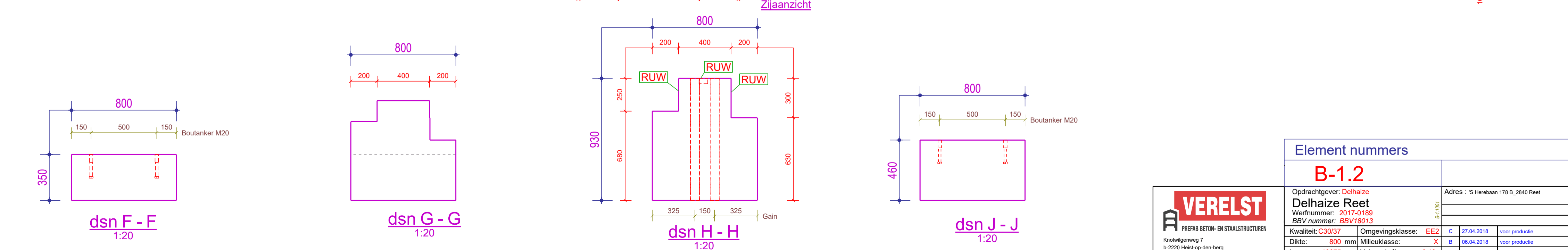
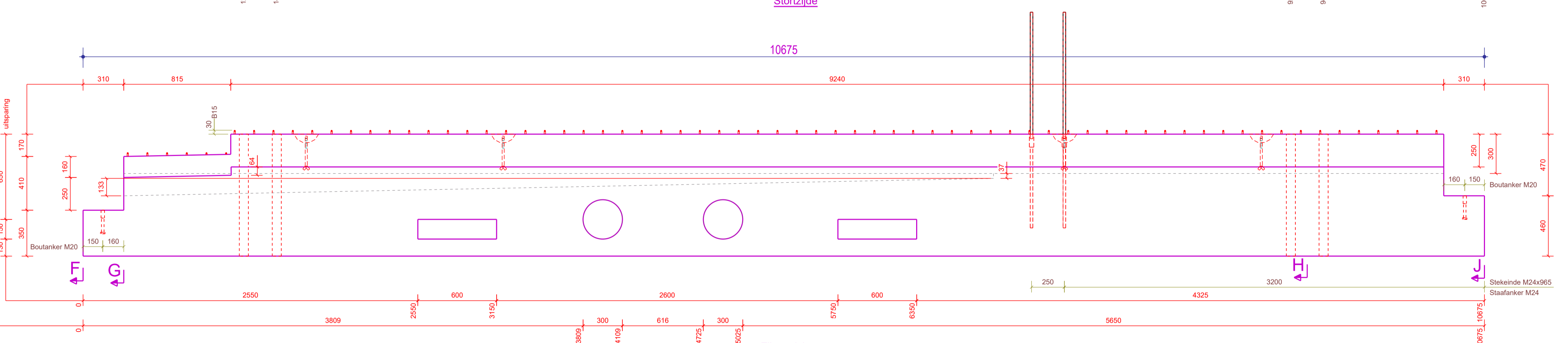
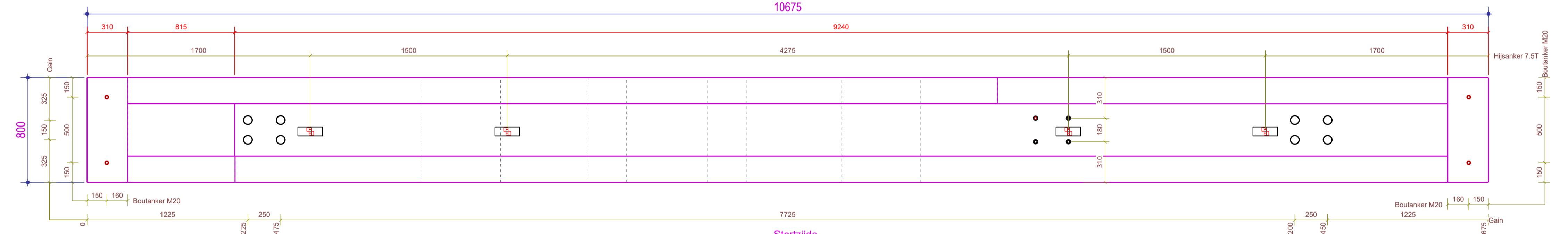
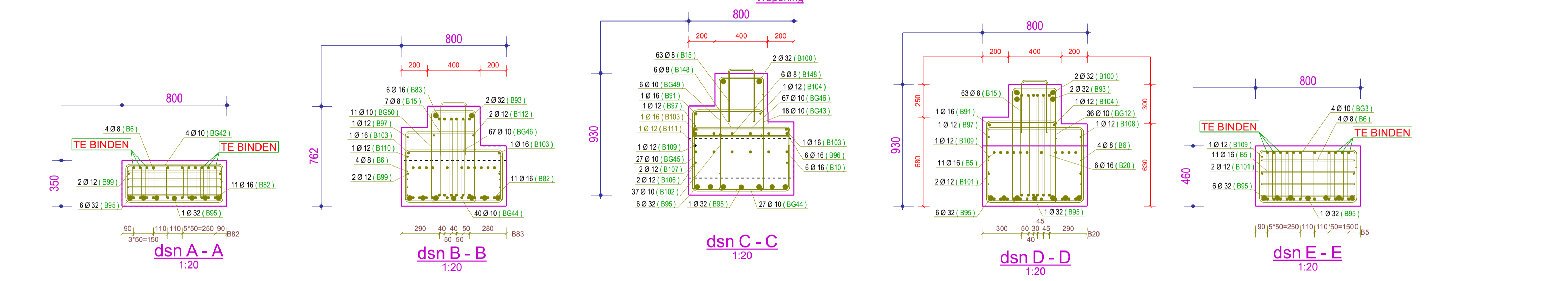
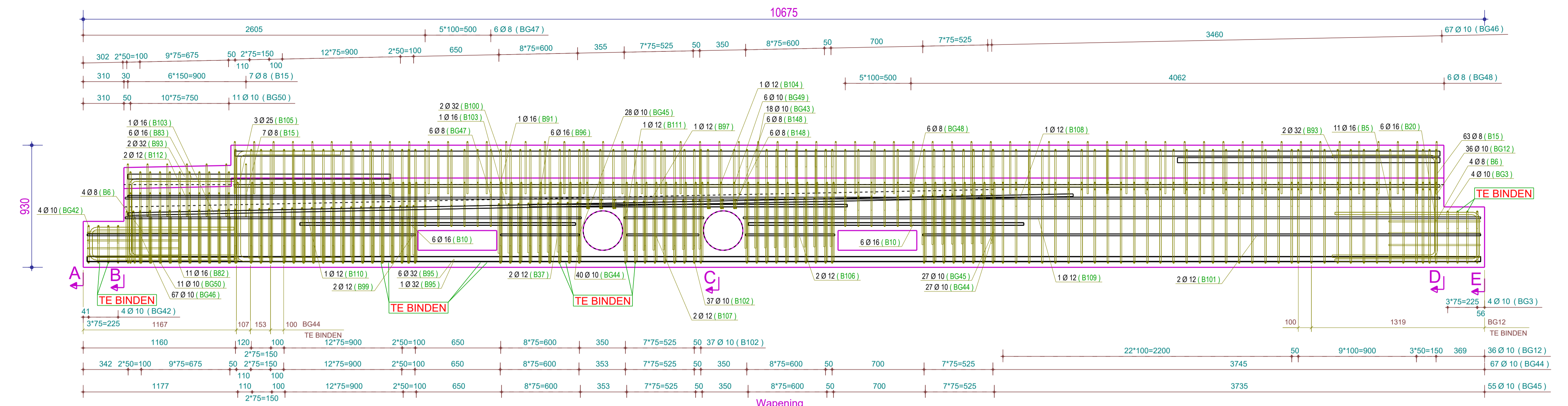


BUIGSTAAT MET BUIGVORMEN									
Posnr	Diameter	Aantal	Kwaliteit	Lengte	Gewist	Gewicht	Buigvorm	Commentaar	
B10	16	12	B500A	2100	3.32	39.8	2100		
B37	12	2	B500A	600	0.53	1.1	600		
B91	16	1	B500A	9185	14.51	14.5	9185		
B93	32	4	B500B	2000	12.62	50.5	2000		
B95	32	7	B500B	10615	66.98	468.9	10615		
B96	16	6	B500A	2420	3.82	22.9	2420		
B97	12	1	B500A	10015	8.89	8.9	10015		
B99	12	2	B500A	2500	2.22	4.4	2500		
B100	32	2	B500B	9180	57.93	115.9	9180		
B101	12	2	B500A	4250	3.77	7.5	4250		
B103	16	2	B500A	7201	11.38	22.8	7201		
B104	12	1	B500A	9185	8.16	8.2	9185		
B106	12	2	B500A	680	0.60	1.2	680		
B107	12	2	B500A	550	0.49	1.0	550		
B108	12	1	B500A	3515	3.12	3.1	3515		
B109	12	1	B500A	5617	4.99	5.0	5617		
B110	12	1	B500A	3475	3.09	3.1	3475		
B111	12	1	B500A	606	0.54	0.5	606		
B112	12	2	B500A	2000	1.78	3.6	2000		
B5	16	11	B500A	2498	3.95	43.4	1100		ENKELE TE BINDEN
B6	8	8	B500A	2077	0.82	6.6	716		
B15	8	70	B500A	961	0.38	26.6	200		
B20	16	6	B500A	2303	3.64	21.8	790		TE BINDEN
B82	16	11	B500A	2373	3.75	41.3	290		ENKELE TE BINDEN
B83	16	6	B500A	2123	3.35	20.1	800		TE BINDEN
B102	10	37	B500A	2574	1.59	58.8	135		
B105	25	3	B500A	2324	8.95	26.8	791		
B148	8	12	B500A	1516	0.60	7.2	740		
BG3	10	4	B500A	2434	1.50	6.0	740		3st TE BINDEN
BG12	10	36	B500A	5668	3.50	125.9	620		
BG42	10	4	B500A	2214	1.37	5.5	540		3st TE BINDEN
BG43	10	18	B500A	2574	1.59	28.6	135		
BG44	10	67	B500A	1393	0.86	57.6	740		
BG45	10	55	B500A	1693	1.04	57.5	540		
BG46	10	67	B500A	1453	0.90	60.1	740		
BG47	8	6	B500A	4414	1.74	10.5	340		
BG48	8	6	B500A	4484	1.77	10.6	340		
BG49	10	6	B500A	2642	1.63	9.8	200		
BG50	10	11	B500A	3467	2.14	23.5	15		
Totaal staven:							1431.0		



Pos	Instortvoorzieningen (grafiek x lengte)	Aantal
G56	Gain -065-72x930	8
PSA1	Staalanker M24 -020/M24x715	4
TSE1	Stekende M24x965 -020/M24x965 blank	4
BA1	Boutanker M20 M20x180	4
H6	Hijssanker 7.5T-260	4
Totaal:		24

Sparingen (aantal)	Langssparingen (Ln)
7	20
Uitstekende wapening	
Extra	

Element nummers	
<b>B-1.2</b>	
Opdrachtgever: Delhaize	
Delhaize Reet	
Werknummer: 2017-0189	
BSV nummer: BSV/6913	
Kwaliteit: C30/37	Omgevingsklasse: EE2 C
Dikte: 800 mm	Milieuklasse: X B
Lengte: 10675 mm	Volumem³: 6.12
Hoogte: 930 mm	Gewicht (kg): 14747

