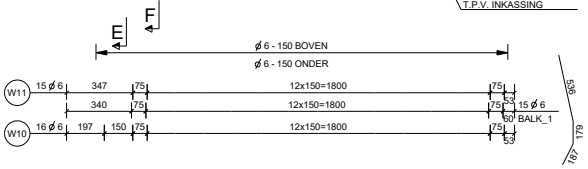
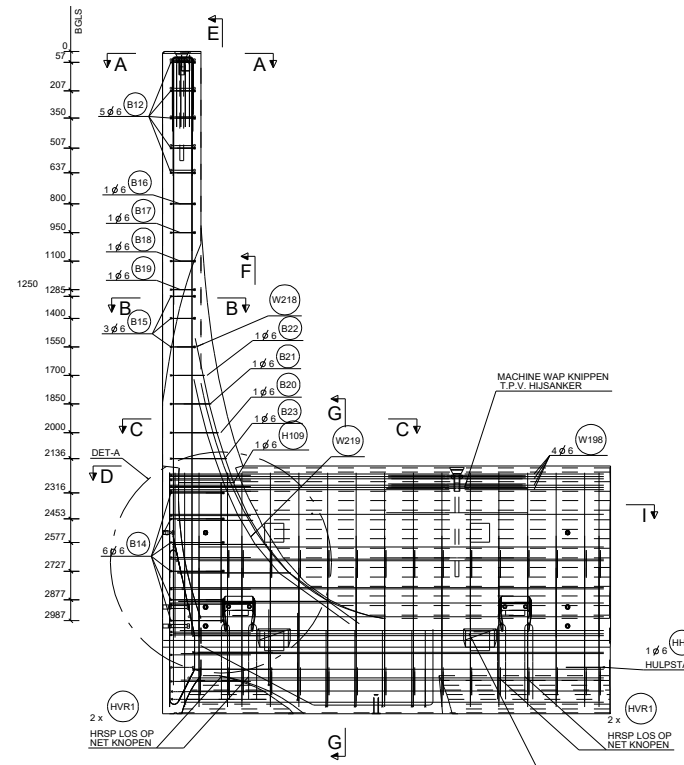
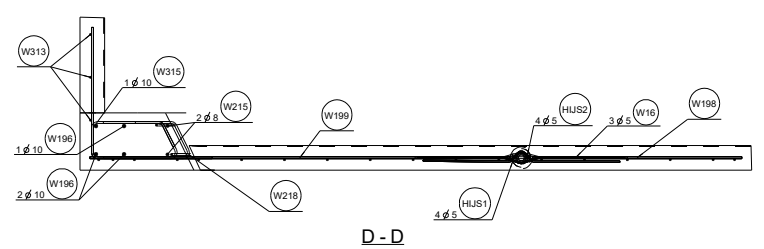
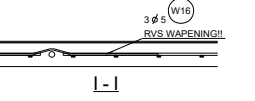
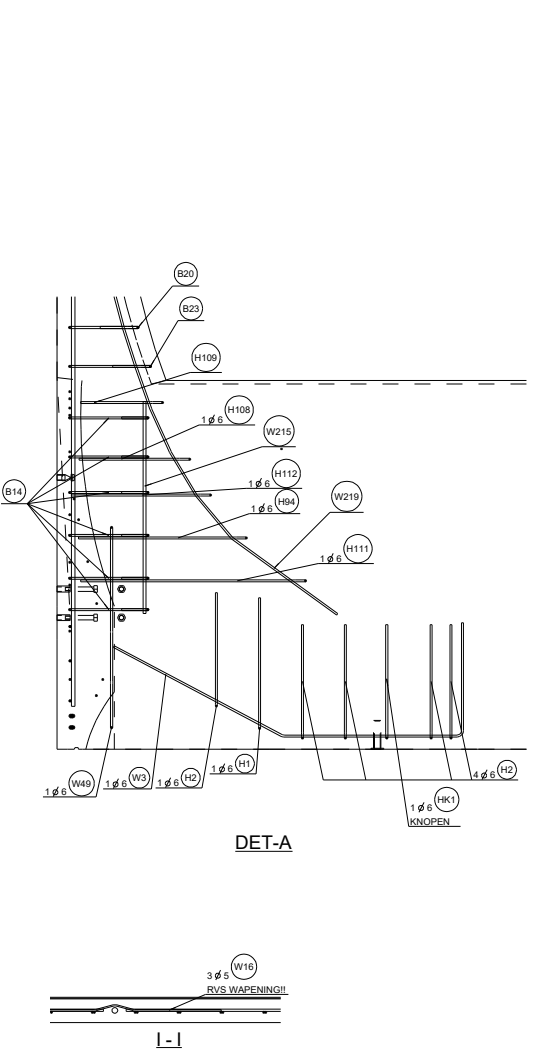
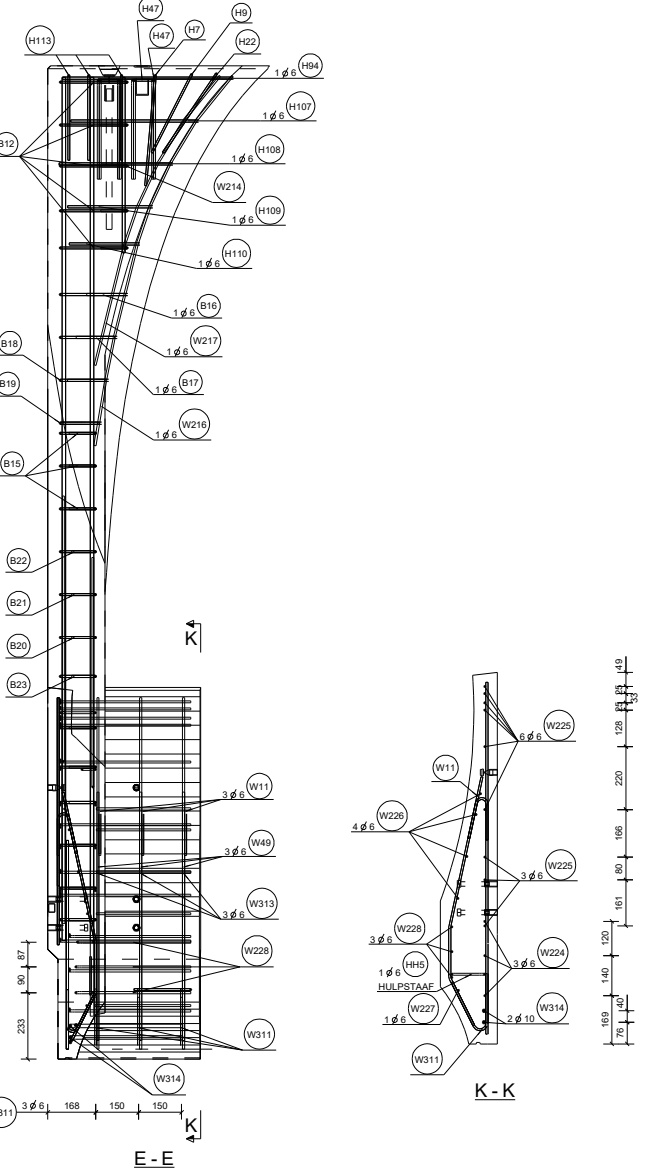
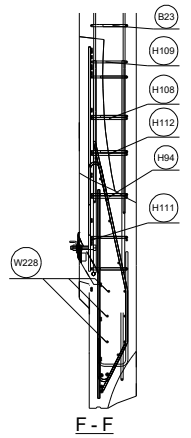
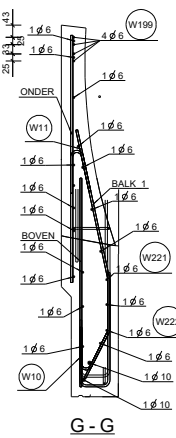
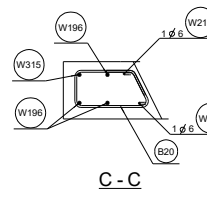
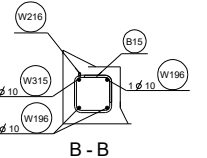
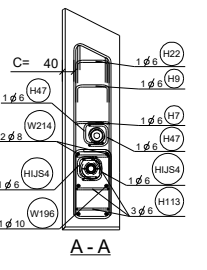


BIEGESCHEMA MIT BIEGEFORMEN

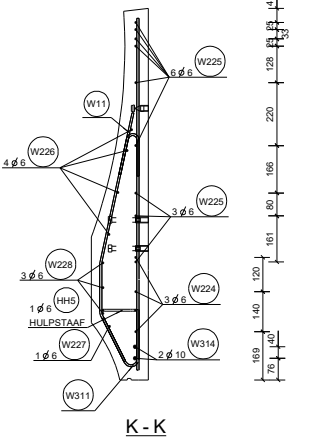
Proef	Diameter	Aantal	Qualiteit	Länge	Biegeform
W106	10	3	B500A/B	3020	302
W108	6	4	B500A/B	731	731
W109	6	4	B500A/B	1469	1469
W214	8	2	B500A/B	613	613
W215	8	2	B500A/B	741	741
W221	6	1	B500A/B	2145	2145
W222	6	1	B500A/B	2150	2150
W226	6	4	B500A/B	330	330
W227	6	1	B500A/B	335	335
W313	6	3	B500A/B	1230	1230
W315	10	1	B500A/B	3285	3285
B12	6	5	B500A/B	857	857
B14	6	6	B500A/B	937	937
B15	6	3	B500A/B	635	635
B16	6	1	B500A/B	836	117° 67' 42" 135 67' 42" 135 67' 42" 135
B17	6	1	B500A/B	762	117° 67' 42" 135 67' 42" 135 67' 42" 135
B18	6	1	B500A/B	701	117° 67' 42" 135 67' 42" 135 67' 42" 135
B19	6	1	B500A/B	652	117° 67' 42" 135 67' 42" 135 67' 42" 135
B20	6	1	B500A/B	864	117° 67' 42" 135 67' 42" 135 67' 42" 135
B21	6	1	B500A/B	785	117° 67' 42" 135 67' 42" 135 67' 42" 135
B22	6	1	B500A/B	720	117° 67' 42" 135 67' 42" 135 67' 42" 135
B23	6	1	B500A/B	951	117° 67' 42" 135 67' 42" 135 67' 42" 135
H1	6	1	B500A/B	735	857
H2	6	5	B500A/B	675	857
H7	6	1	B500A/B	868	391
H9	6	1	B500A/B	708	311
H22	6	1	B500A/B	759	338
H47	6	2	B500A/B	855	77
H04	6	2	B500A/B	1268	857
H107	6	1	B500A/B	968	613
H108	6	2	B500A/B	868	613
H109	6	2	B500A/B	668	613
H110	6	1	B500A/B	568	613
H111	6	1	B500A/B	1668	857
H112	6	1	B500A/B	1068	857
H113	6	3	B500A/B	686	300
HK2	6	1	B500A/B	460	857
HK5	6	1	B500A/B	492	857
HK1	6	1	B500A/B	675	400
HVR1	8	4	B500A/B	823	15° 19' 15° 19' 15° 19'
W3	6	1	B500A/B	1685	150 130° 150 130° 150 130°
W10	6	16	B500A/B	305	150 130° 150 130° 150 130°
W11	6	18	B500A/B	310	150 130° 150 130° 150 130°
W16	5	3	RVS_A4	748	304 15° 77' 15° 77'
W49	6	4	B500A/B	900	150 130° 150 130° 150 130°
W216	6	1	B500A/B	1402	150 130° 150 130° 150 130°
W217	6	1	B500A/B	1117	150 130° 150 130° 150 130°
W218	6	1	B500A/B	1800	150 130° 150 130° 150 130°
W219	6	1	B500A/B	1580	150 130° 150 130° 150 130°
W224	6	3	B500A/B	835	150 130° 150 130° 150 130°
W225	6	9	B500A/B	867	150 130° 150 130° 150 130°
W228	6	3	B500A/B	807	150 130° 150 130° 150 130°
W311	6	3	B500A/B	408	150 130° 150 130° 150 130°
W314	10	2	B500A/B	874	150 130° 150 130° 150 130°



VOORAANZICHT



E-E



K-K

**RVS-WAPENING = Edeldstahl
EDELSTAHLBEWEHRUNG NICHT SCHWEIßEN,
SONDERN IMMER VERKNÜPFEN
(RVS ALTIJD KNOPEN!)**

Lose Bewehrung hinzufügen

Proef	Diameter	Aantal	Qualiteit	Länge	Biegeform
HJS1	5	4	RVS_A4	729	15° 19' 15° 19' 15° 19'
HJS2	5	4	RVS_A4	714	15° 19' 15° 19' 15° 19'
HJS4	6	2	B500A/B	855	150 130° 150 130° 150 130°

Betondekking: 30mm

Projekt: Heidelberg Cement Heidelberg
 Phase: Entwurf für Ausführung
 Teil: AS BUILT

Maßstab:
 Zeichner: jdv
 Datum: 10-01-19

Auftragsnummer: Z0148
 Seitennummer: EA1601 - 12
 Fortschritt: FÜR AUSFÜHRUNG

BYLDIS
 profab postbus 221 5500 AE Veldhoven
 T +31 (0)88 134 50 00
 profab@byldis.com
 engineering postbus 221 5500 AE Veldhoven
 T +31 (0)88 134 50 00
 engineering@byldis.com