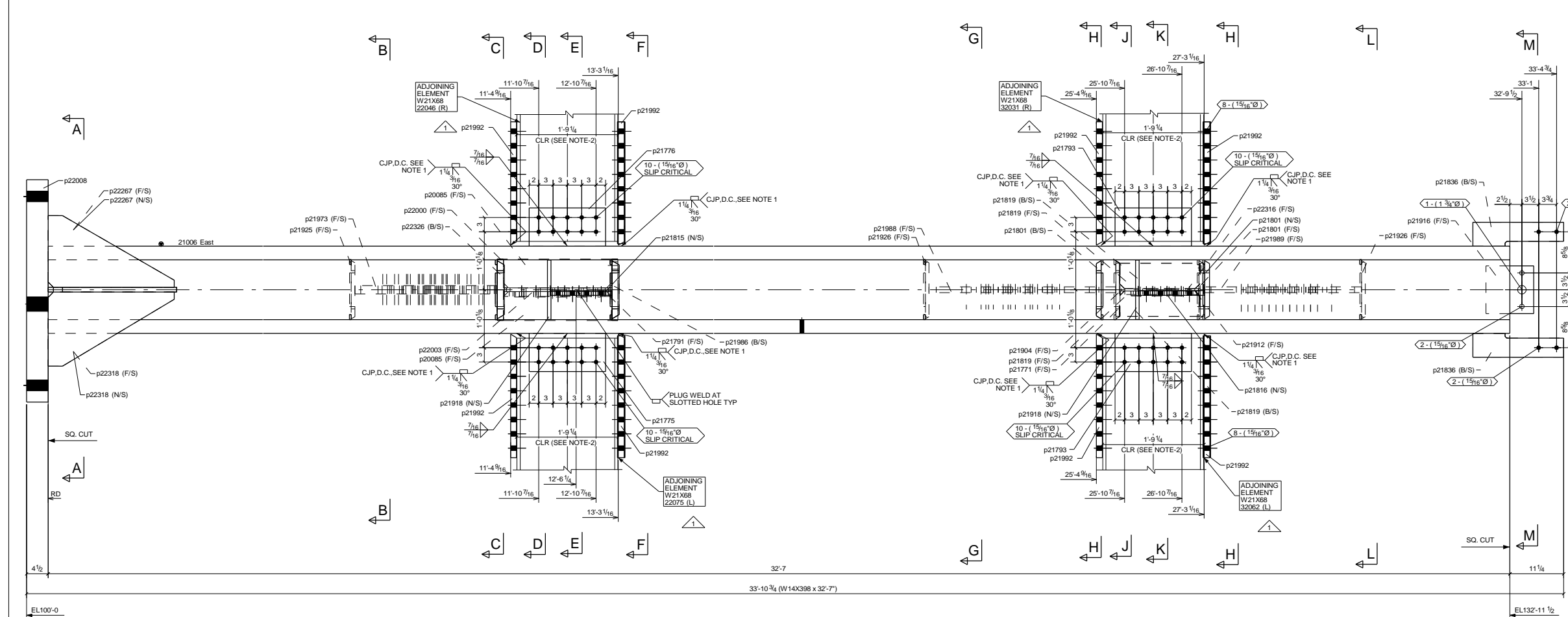
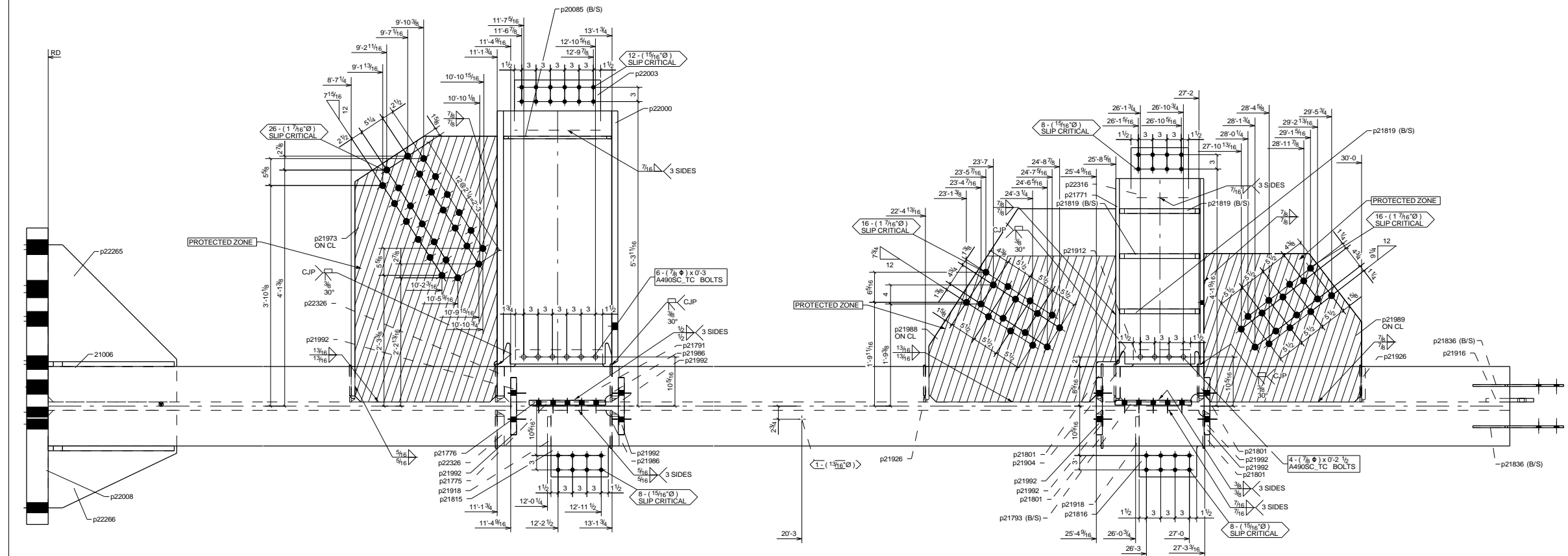


LOCATION					
MARK	QTY	T.O.S	GRD REF	ZONE	REF
21006	1	133-10'3/4	10V	2	E200



1 COLUMN MARK: 21006

Profile	d	b	t	w	k
W14X398	18 1/4"	16 5/8"	2 7/8"	1 3/4"	1 4 1/8"

WORK THIS DRAWING WITH CONJUNCTION WITH : 21006-1

BILL OF MATERIAL

ABM MARK	SHIPPING MARK	ASSY MARK	NO. REQ'D	DESCRIPTION	LENGTH	GRADE	WEIGHT	REMARKS
2ABM1012	21006	1	1	W14X398	32'-7"	A992	13026	CS2E
	p20085	2	2	PL 1/2"X6 1/16"	1'-10 9/16"	A572-GR-50	38	CS2E
	p21771	1	1	W18X86	3'-2 7/8"	A992	275	CS2E
	p21775	1	1	PL 1"X8"	1'-4"	A36	36	CS2E
	p21776	1	1	PL 1"X8"	1'-4"	A36	36	CS2E
	p21791	1	1	PL 1"X10 15/16"	1'-10 7/16"	A36	65	CS2E
	p21793	2	2	PL 1"X8"	1'-4"	A36	73	CS2E
	p21801	4	4	PL 1"X7 1/4"	1'-0 1/8"	A572-GR-50	87	CS2E
	p21815	1	1	PL 1"X12 3/4"	1'-1 15/16"	A36	49	CS2E
	p21816	1	1	PL 1"X13 11/16"	1'-1 15/16"	A36	51	CS2E
	p21819	6	6	PL 1"X5 5/16"	1'-4 13/16"	A572-GR-50	150	CS2E
	p21836	4	4	PL 3/8"X5"	1'-7"	A36	35	CS2E
	p21857	11	11	PL 3/8"X1"	0'-7"	A36	8	CS2E
	p21858	18	18	PL 3/8"X1"	0'-6 11/16"	A36	13	CS2E
	p21855	6	6	PL 3/8"X1"	0'-6 7/16"	A36	4	CS2E
	p21904	1	1	PL 7/8"X7 1/4"	1'-0 1/8"	A572-GR-50	20	CS2E
	p21912	1	1	PL 3/4"X10 15/16"	1'-4 7/16"	A36	34	CS2E
	p21916	1	1	PL 3/4"X10"	0'-10"	A36	21	CS2E
	p21918	2	2	PL 3/4"X6 1/8"	1'-0 7/16"	A36	32	CS2E
	p21925	1	1	PL 3/4"X7 1/4"	1'-0 1/8"	A572-GR-50	17	CS2E
	p21926	2	2	PL 3/4"X7 1/4"	1'-0 1/8"	A572-GR-50	35	CS2E
	p21973	1	1	PL 1 3/4"X29 3/4"	4'-7 9/16"	A572-GR-50	785	CS2E
	p21986	2	2	PL 1 1/2"X7 1/4"	1'-0 1/8"	A572-GR-50	63	CS2E
	p21988	1	1	PL 1 1/4"X39 1/16"	3'-4 7/16"	A572-GR-50	453	CS2E
	p21989	1	1	PL 1 1/4"X31 1/16"	2'-9"	A572-GR-50	335	CS2E
	p21992	8	8	PL 1 1/4"X12"	2'-1 13/16"	A572-GR-50	866	BC1E
	p22000	1	1	W24X176	4'-5 1/16"	A992	757	CS2E
	p22003	1	1	PL 1 1/8"X10 1/2"	1'-5"	A36	60	CS2E
	p22008	1	1	PL 4 1/2"X46 1/2"	5'-2"	A572-GR-50	3679	CS2E
	p22086	1	1	PL 3/8"X1"	0'-7"	A36	1	CS2E
	p22265	1	1	PL 1"X26 7/8"	2'-8 7/8"	A572-GR-50	189	BC1E
	p22266	1	1	PL 1"X20 3/8"	2'-2 7/8"	A572-GR-50	116	BC1E
	p22267	2	2	PL 1"X15"	2'-2 3/8"	A572-GR-50	135	BC1E
	p22316	1	1	PL 1"X10 1/2"	1'-0"	A36	36	CS2E
	p22318	2	2	PL 1"X15 1/2"	2'-2 3/8"	A572-GR-50	139	BC1E
	p22326	2	2	PL 1 1/2"X7 1/4"	1'-0 1/8"	A572-GR-50	63	CS2E
				TOTAL =			21762	

BOLT SUMMARY - QTY'S ARE FOR ONE ASSEMBLY ONLY

ASSEMBLY	NO. REQ'D	DIA.	LENGTH	WORKSHOP/SITE	BOLT GRADE	REMARKS
21006	4	7/8"	2 1/2"	Workshop	A888-TCF48HEAVY HEX	SLIP CRITICAL
21006	6	7/8"	3"	Workshop	A888-TCF48HEAVY HEX	SLIP CRITICAL
21006	16	1 1/8"	4 3/4"	Site	A888-TCF48HEAVY HEX	SLIP CRITICAL
21006	16	1 1/8"	5 1/4"	Site	A888-TCF48HEAVY HEX	SLIP CRITICAL
21006	26	1 1/8"	6 3/4"	Site	A888-TCF48HEAVY HEX	SLIP CRITICAL

- 04/10/2019 RE-IEFF. WELD IN SECTION A-A ADDED
 - 04/08/2019 RE-RELEASED FOR FABRICATION
 - 04/04/2019 RELEASED FOR FABRICATION
 - 02/22/2019 RE-ISSUED FOR APPROVAL
 - 01/03/2019 ISSUED FOR APPROVAL
- NO BACK CHARGES WILL BE ACCEPTED WITHOUT PRIOR AUTHORIZATION IN WRITING
- NOTE:

MATERIAL: A992 (U.N.O.)	SSPC: SP-3
BOLT: A325 (U.N.O.)	WELD: 3/16" (U.N.O.)
SOLE SIZE: 15/16" (U.N.O.)	ELECTRODE: E70XXX

JOB NAME & LOCATION: Spanish Peaks Lodge
995 Settlement Trail Big Sky, MT 59716

ARCH: Hart Howerton
ENGR: NISHKIAN MENNINGER
CONTR: Suffolk Construction

REF: E200	JOB NO: 1863
DRAWN BY: KSA 01/03/2019	CHECKED BY: JS 01/03/2019
SHEET TITLE: COLUMN	DWG NO: 21006

HOLES NOTED 'SLIP CRITICAL' SHALL HAVE NO PAINT WITHIN 1" OF THOSE HOLES

