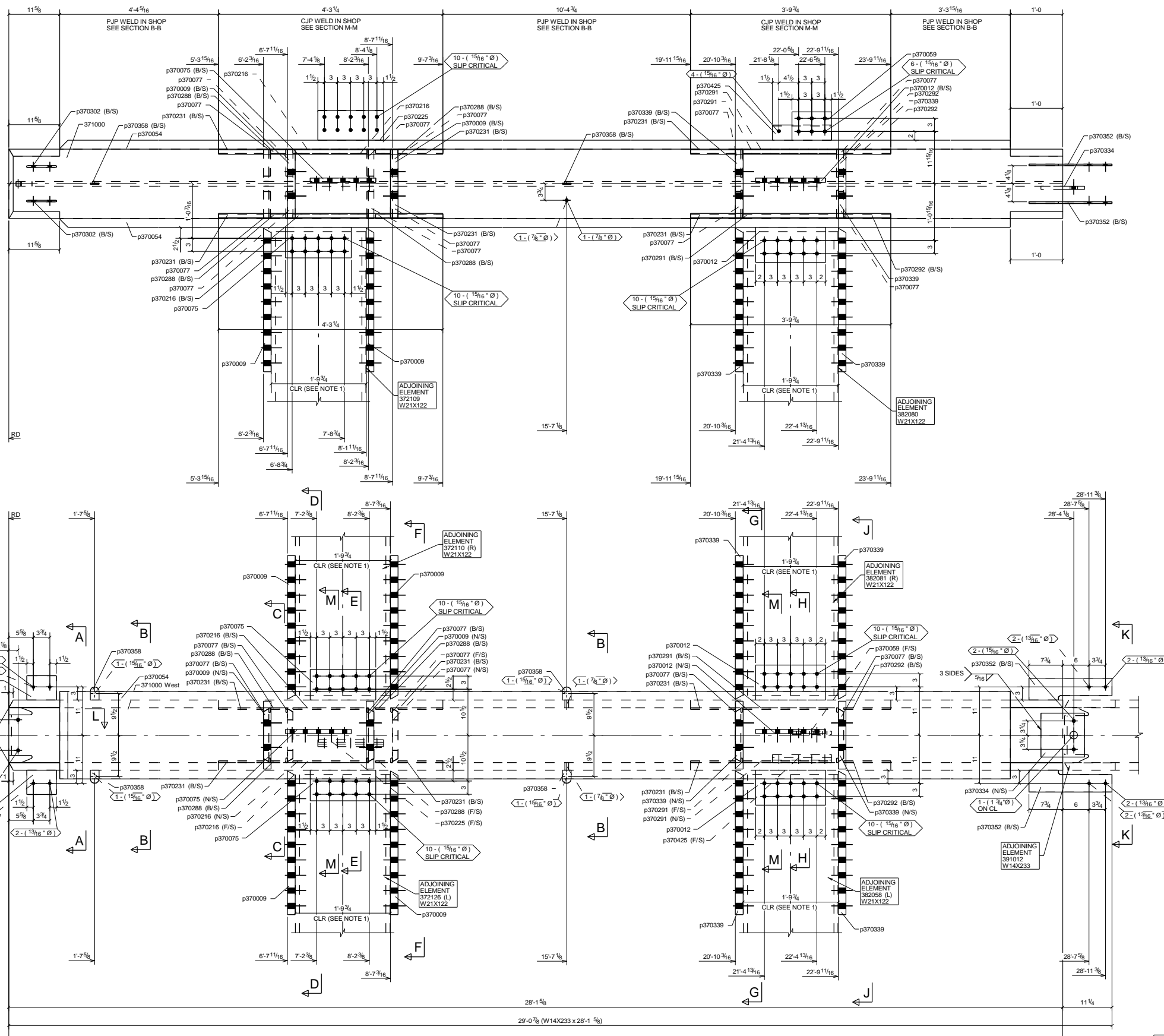
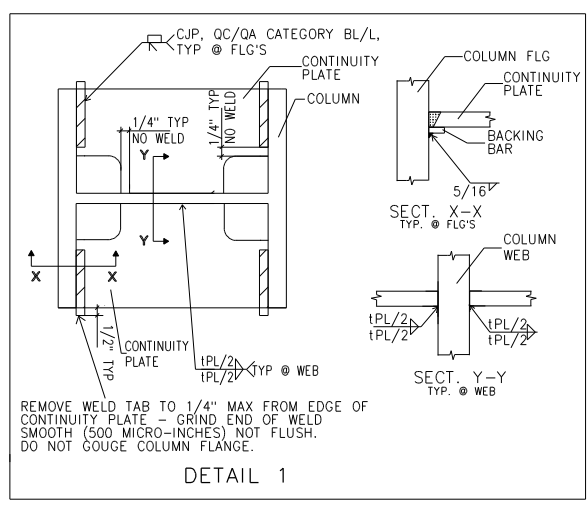


LOCATION					
MARK	QTY	T.O.S	GRID REF	ZONE	REF
371000	1	133-10'3/4	ALA/18	37	E3700



BILL OF MATERIAL									
ABM MARK	SHIPPING MARK	ASSY MARK	NO. REQ'D	DESCRIPTION	LENGTH	GRADE	WEIGHT	REMARKS	
37ABM1008371000			1						
			371000	1	W14X233	28'-1 5/8"	A992	6411	CS2E
			p370009	6	PL 1/4"x15 1/2"	2'-8 13/16"	A572-GR 50	1491	BC1E
			p370012	3	PL 1"x8"	1'-4"	A572-GR 50	109	CS2E
			p370054	2	PL 2"x20"	26'-2"	A572-GR 50	7104	BC1E
			p370059	1	PL 3/4"x6 1/2"	0'-9"	A572-GR 50	12	CS2E
			p370075	3	PL 1"x7"	1'-3"	A572-GR 50	89	CS2E
			p370077	12	PL 1/4"x7 7/16"	1'-0 1/8"	A572-GR 50	337	CS2E
			p370216	4	PL 3/8"x1"	1'-4 7/8"	A36	7	CS2E
			p370225	1	PL 1"x6 3/4"	1'-3"	A572-GR 50	29	CS2E
			p370231	12	PL 3/8"x1"	0'-10 1/4"	A36	13	CS2E
			p370288	4	PL 3/8"x1"	0'-3 1/2"	A36	3	CS2E
			p370291	4	PL 3/8"x1"	1'-9 1/2"	A36	9	CS2E
			p370292	4	PL 3/8"x1"	0'-10 3/4"	A36	5	CS2E
			p370302	4	PL 3/8"x5 9/16"	0'-6 3/4"	A36	16	CS2E
			p370334	1	PL 3/4"x10"	0'-10"	A572-GR 50	21	CS2E
			p370339	6	PL 1/4"x15 1/2"	2'-8 13/16"	A572-GR 50	1491	BC1E
			p370345	8	PL 3/8"x1"	0'-6 1/2"	A36	5	CS2E
			p370348	16	PL 3/8"x1"	0'-6 3/16"	A36	11	CS2E
			p370352	4	PL 3/8"x5"	1'-7"	A36	35	CS2E
			p370358	4	PL 1/4"x2"	0'-3"	A36	2	CS2E
			p370425	1	PL 5/8"x3 3/4"	1'-1 1/2"	A36	9	CS2E
							TOTAL =	17209	

BOLT SUMMARY - QTY'S ARE FOR ONE ASSEMBLY ONLY						
ASSEMBLY	NO. REQ'D	DIA.	LENGTH	WORKSHOPSITE	BOLT GRADE	REMARKS
371000	8	3/4"	13/4"	Site	A307PLAINHEX	
371000	2	7/8"	3"	Site	A307PLAINHEX	



INCHES	A	B	C	R
3/16"	1 1/8"	3/4"	1/2"	3/8"
1/4"	1 1/8"	3/4"	1/2"	3/8"
3/8"	1 1/8"	3/4"	1/2"	3/8"
7/16"	1 3/8"	3/4"	1/2"	3/8"
1/2"	1 7/8"	3/4"	1/2"	3/8"
5/8"	1 7/8"	3/4"	1/2"	3/8"
1 1/16"	2 1/16"	3/4"	1 1/16"	3/8"
3/4"	2 1/4"	3/4"	3/4"	3/8"
13/16"	2 7/16"	3/4"	13/16"	3/8"
3/8"	2 7/8"	1 1/16"	7/8"	3/8"
15/16"	2 7/8"	3/4"	15/16"	3/8"
1"	3"	3/4"	1"	3/8"
1 1/16"	3 1/16"	7/8"	1 1/16"	3/8"
1 5/16"	4"	1"	1 5/16"	3/8"
1 9/16"	4 1/16"	1 3/16"	1 9/16"	3/8"
1 7/8"	5 1/8"	1 7/8"	1 7/8"	3/8"
2"	6"	1 1/2"	2"	3/8"
2 1/2"	7 1/2"	1 7/8"	2 1/2"	3/8"
2 11/16"	8"	2"	2 11/16"	3/8"
3 3/16"	9 5/8"	2 3/8"	3 1/4"	3/8"

WORK THIS DRAWING WITH CONJUNCTION WITH : 371000-1.

1 COLUMN MARK: 371000

Profile	d	b	t	w	k
W14X233	16"	15.78"	1.34"	11.116"	3"

NOTE 1: EACH INDIVIDUAL CONN MUST BE FIT UP IN FABRICATION SHOP

NOTE 2: REMOVE WELD BACKING BAR GOUGE TO SOUND WELD METAL AND ADD 5/16 MINIMUM FILLER WELD.

HOLES NOTED 'SLIP CRITICAL' SHALL HAVE NO PAINT WITHIN 3" OF THOSE HOLES

PAINT TYPE	
NO PAINT	
SP-2	

12/06/2019	RELEASED FOR FABRICATION
07/19/2019	ISSUED FOR APPROVAL
NO BACK CHARGES WILL BE ACCEPTED WITHOUT PRIOR AUTHORIZATION IN WRITING	
NOTE:	
MATERIAL: A992 (U.N.O.)	SSPC: SP-3
BOLT: A325 (U.N.O.)	WELD: 3/16" (U.N.O.)
SOLE SIZE: 15/16" (U.N.O.)	ELECTRODE: E70XXX
ALLIED STEEL Steel Detailing IRON	
JOB NAME & LOCATION: Spanish Peaks Lodge 995 Settlement Trail Big Sky, MT 59716	
ARCH: Hart Howerton	ENGR: NISHKIAN MENNINGER
CONTR: Suffolk Construction	
REF: E3700	JOB NO: 1863
DRAWN BY: KSA 07/19/2019	CHECKED BY: SG 07/19/2019
SHEET TITLE: COLUMN	