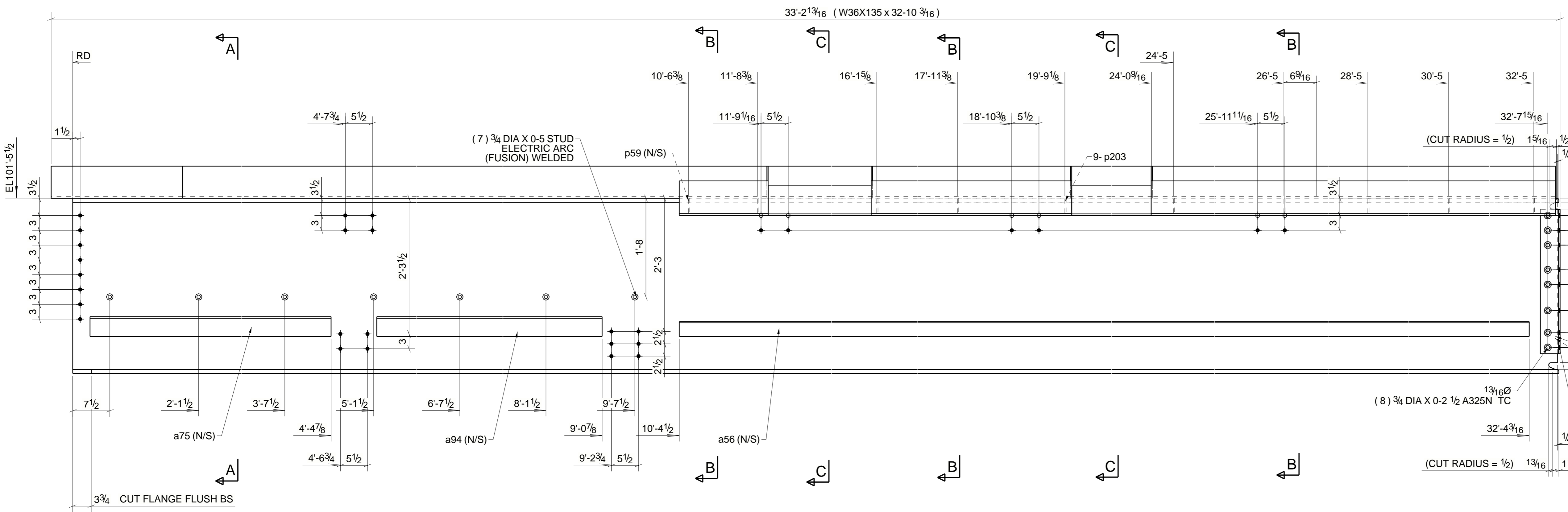
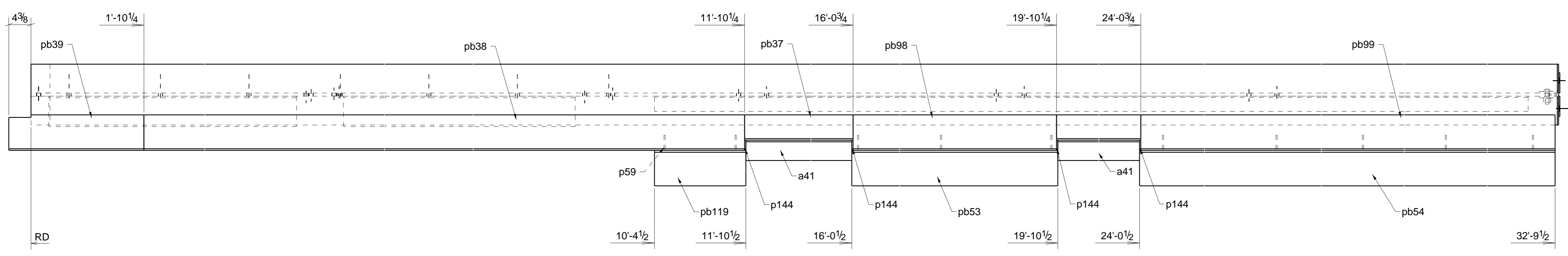


REF. NUMBER  
ABM320

**BILL OF MATERIAL**

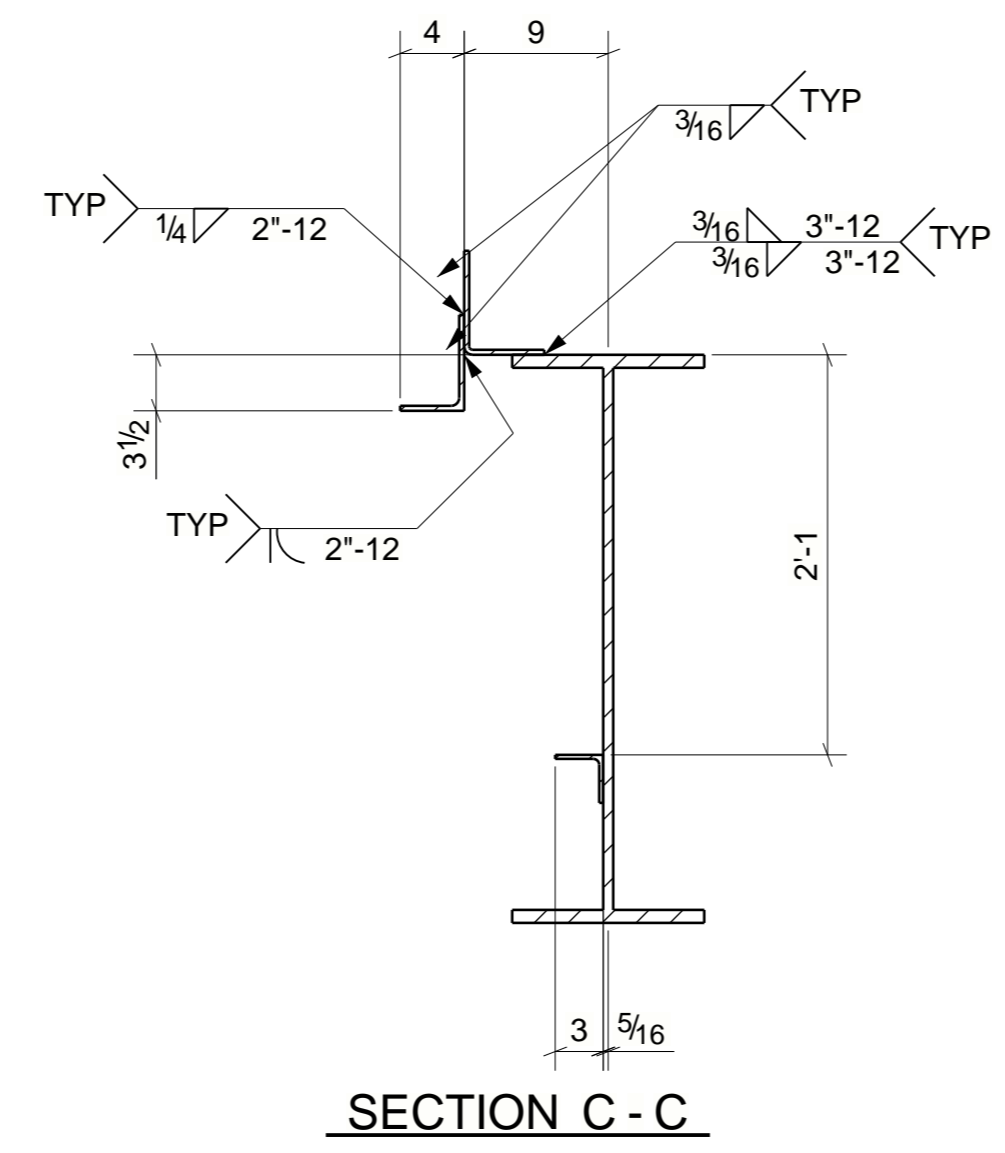
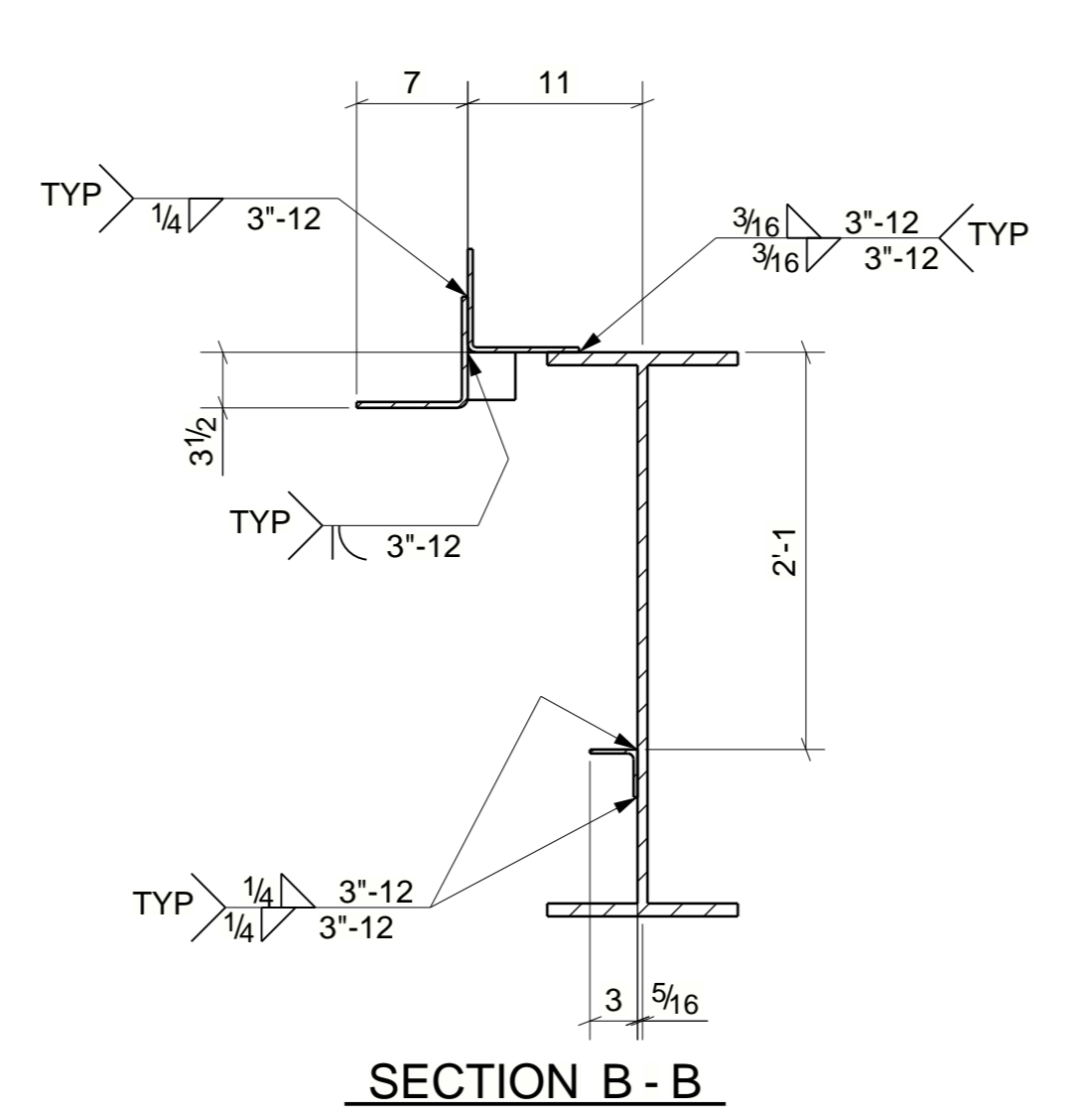
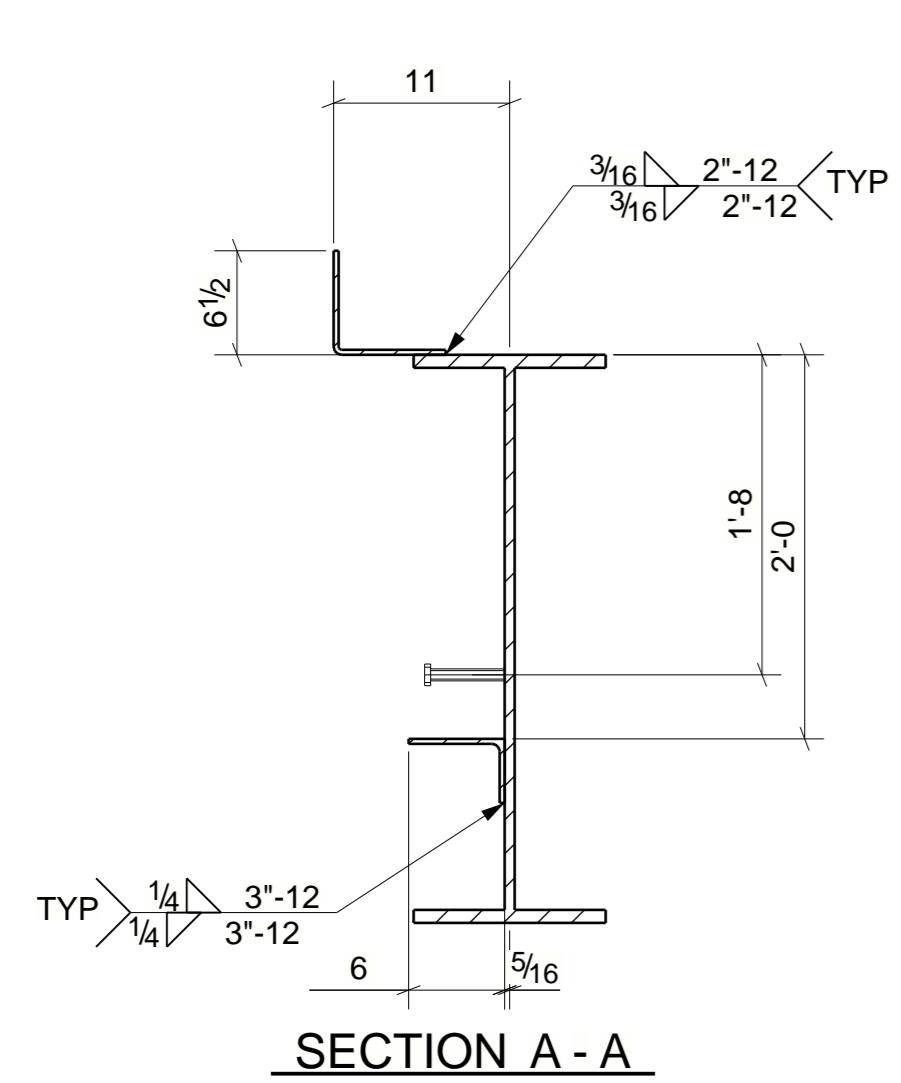
QTY	SHIPPING BILL		SHOP BILL					REMARKS	WEIGHT
	NO.	DIRECTION MARK	NO.	SHAPE	MATERIAL GRADE	LENGTH	ASSY. MARK		
1	1	1B129		BEAM					
			1	W36X135	A992	32-10 3/16	1B129	NO PAINT	4460
			2	L6X4X5/16	A36	4-2	a41	GALV	86
			1	L3X3X1/4	A36	21-11 11/16	a56		108
			1	L6X4X5/16	A36	4-1 3/8	a75		42
			1	L6X4X5/16	A36	3-10 3/4	a94		40
			1	L4X4X5/16	A36	2-5 1/4	a110		20
			1	L4X4X5/16	A36	2-5 1/4	a111		20
			1	PL 1/4 X 3"	A36	0-3	p59	STD RED ZN	1
			4	PL 1/4 X 2"	A36	0-6 1/2	p144		4
			9	PL 1/4 X 3"	A36	0-3	p203		6
			2	PL 5/16 X 11 1/16"	A36	4-2 1/2	pb37		99
			1	PL 5/16 X 13 1/16"	A36	10-0	pb38		138
			1	PL 5/16 X 13 1/16"	A36	2-2 5/8	pb39		31
			1	PL 3/8 X 13 7/16"	A36	3-10	pb53	GALV	66
			1	PL 3/8 X 13 7/16"	A36	8-9	pb54	GALV	150
			1	PL 5/16 X 13 1/16"	A36	3-9 1/2	pb98		52
			1	PL 5/16 X 13 1/16"	A36	8-8 3/4	pb99		121
			1	PL 3/8 X 13 7/16"	A36	1-6	pb119	GALV	26
			8	3/40 A325N_TC BOLT		0-2 1/2		Workshop	5
			7	STUD 3/4 DIA		0-5			5
			8	3/40 A325N_TC BOLT		0-2 3/4		Site	
			16	3/40 A325N_TC BOLT		0-2		Site	
TOTAL WEIGHT THIS DRAWING									5479



PREPARE T&B FLG FOR (MC) FULL PEN FIELD WELD NO PAINT FOR ALL WELDS

a110 (N/S)  
GOL 2 7/16 (N/S)  
a111 (F/S)  
GOL 2 7/16 (F/S)  
(13/16x1) SLOTS IN OSL

**ONE - BEAM - 1B129**



E-SHEET REFERENCE												
MATERIAL (UNLESS NOTED)		A36										
SURFACE PREPARATION		SSPC-SP3										
SHOP PAINT		NO PAINT										
SHOP CONNECTIONS/ELECTRODES		WELD/E70XX										
FIELD CONNECTIONS		3/4 A325N_TC										
HOLES (U.N.)		13/16"										
REVISION RECORD		<table border="1"> <tr> <th>REV.</th> <th>DATE</th> <th>DESCRIPTION</th> </tr> <tr> <td>0</td> <td>04/16/20</td> <td>ISSUED FOR FABRICATION</td> </tr> <tr> <td>A</td> <td>02/17/20</td> <td>ISSUED FOR APPROVAL</td> </tr> </table>		REV.	DATE	DESCRIPTION	0	04/16/20	ISSUED FOR FABRICATION	A	02/17/20	ISSUED FOR APPROVAL
REV.	DATE	DESCRIPTION										
0	04/16/20	ISSUED FOR FABRICATION										
A	02/17/20	ISSUED FOR APPROVAL										
<p><b>ALAMO STRUCTURAL STEEL</b></p> <p>2784 OLD DALLAS RD. WACO, TEXAS 76705 PHONE: 254 799 2471 FAX: 254 799 6227</p>												
PROJECT: BWSH Temple-Rad.												
CUSTOMER: Whiting Turner												
LOCATION: Temple, TX												
ARCH/ENG: Perkins&Will												
DETAILS:												
DETAILER: DAP	DATE: 02/17/2020	JOB NO.:	DRWG. NO.:									
CHECKER: MJC	DATE: 02/17/2020	32-19040	1B129									
PM: JESSE BARNETT												

Tobias Structures