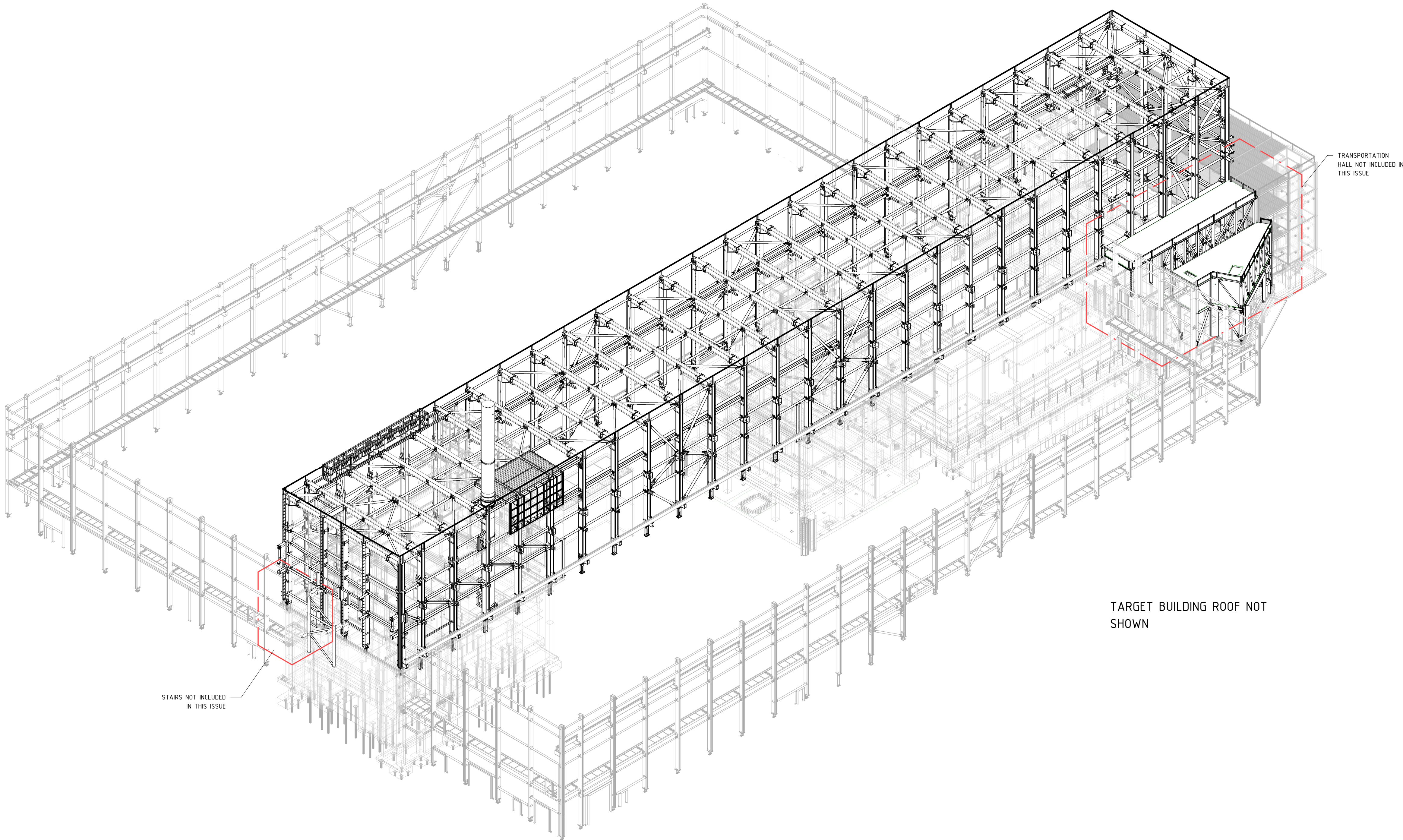


GENERAL NOTES:

1. DO NOT SCALE FROM THIS DRAWING.
2. THIS DRAWING SHALL BE READ IN CONJUNCTION WITH ALL OTHER ARCHITECTURAL, MECHANICAL, ELECTRICAL, SERVICE AND STRUCTURAL DRAWINGS, SPECIFICATION, SCHEDULES, REPORTS AND ASSOCIATED DOCUMENTS.
3. SITE SURVEYS ARE TO BE UNDERTAKEN TO VALIDATE THE SETTING OUT AND SITE LEVELS.
4. REFER TO THE STEEL SPECIFICATION "K05-DT-DE00000--- STRUCTURAL STEEL SPECIFICATION 001 002 003" FOR FULL DETAILS OF MATERIAL AND WORKMANSHIP REQUIREMENTS, DESIGN CODES, STANDARDS, EXECUTION CLASS, TOLERANCE, AND FIRE AND CORROSION PROTECTION SYSTEMS.
5. REFER TO THE BASIS OF DESIGN "K05-DT-DE00000---SRS BASIS OF DESIGN" FOR STRUCTURAL DESIGN STATEMENT, LOADING INFORMATION AND ADDITIONAL DETAILS.
6. FOR STEEL TO STEEL CONNECTION DETAILS, BASEPLATES, AND SHEAR KEYS REFER TO THE BUREOHAPPOLD 3D MODEL FILE "K05-24---V-002---".
7. FOR ANCHOR BOLT AND CAST IN PLATE DETAILS REFER TO PACKAGE P53A
8. TEMPORARY STRUTTING / BRACING WILL BE REQUIRED DURING THE ERECTION OF THE STEEL STRUCTURE. DETAILED DESIGN OF THE TEMPORARY WORKS IS BY THE CONTRACTOR, AND SHALL BE COORDINATED WITH K05 PRIOR TO CONSTRUCTION.



3D Overview - North East