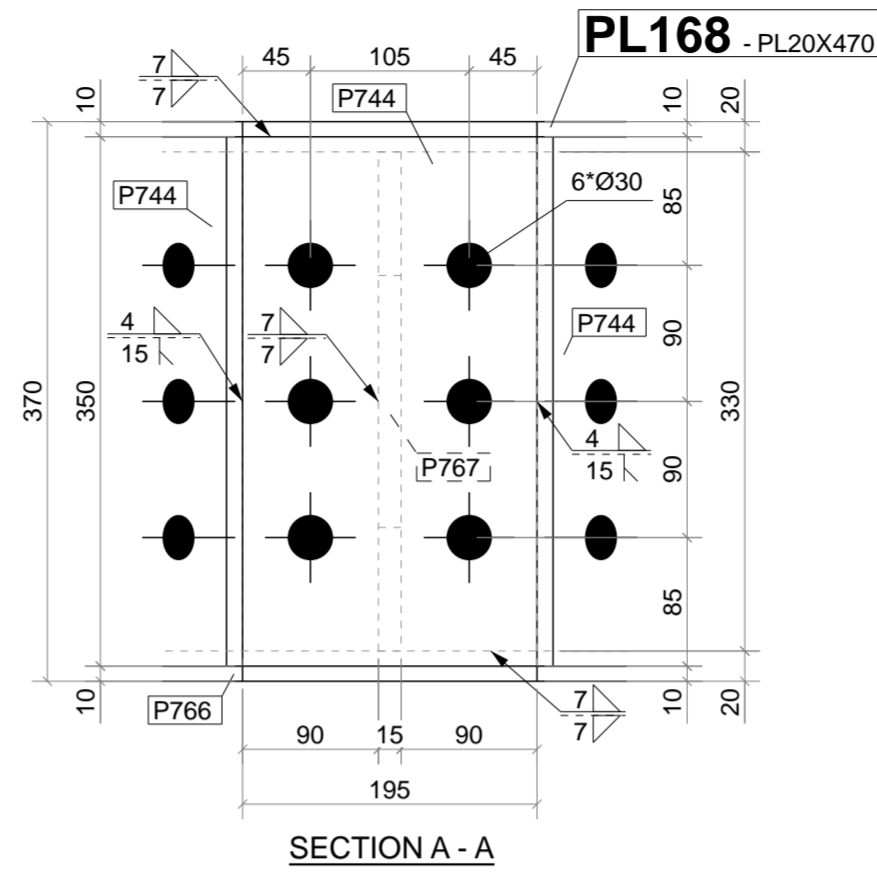
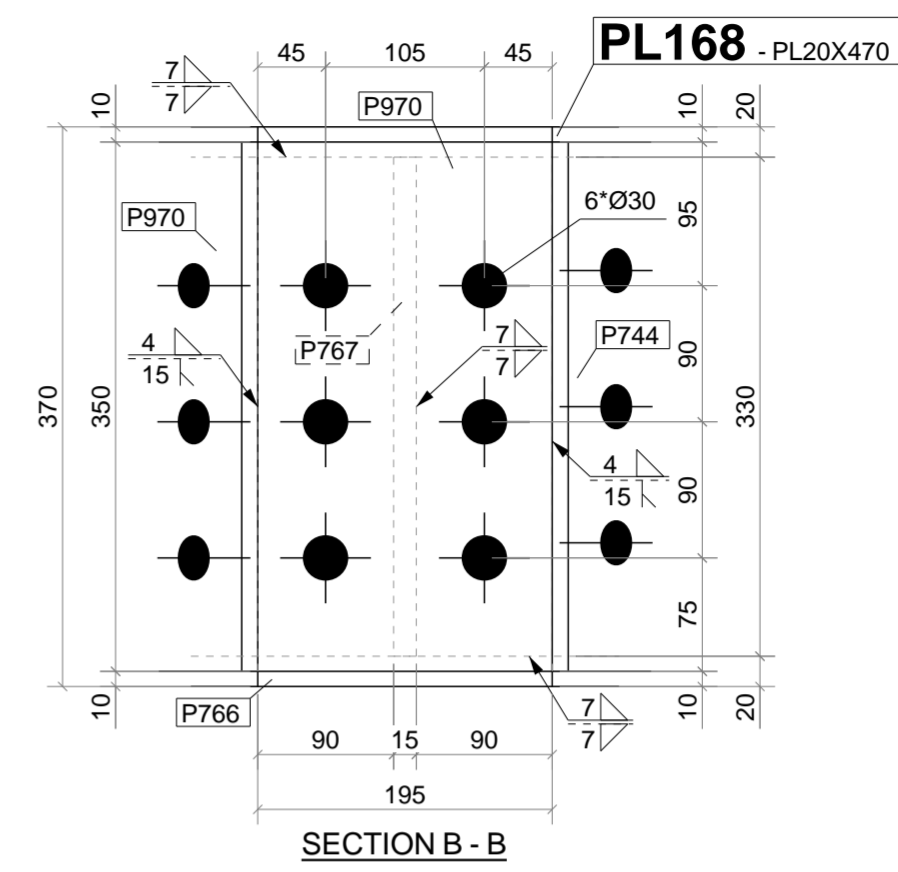


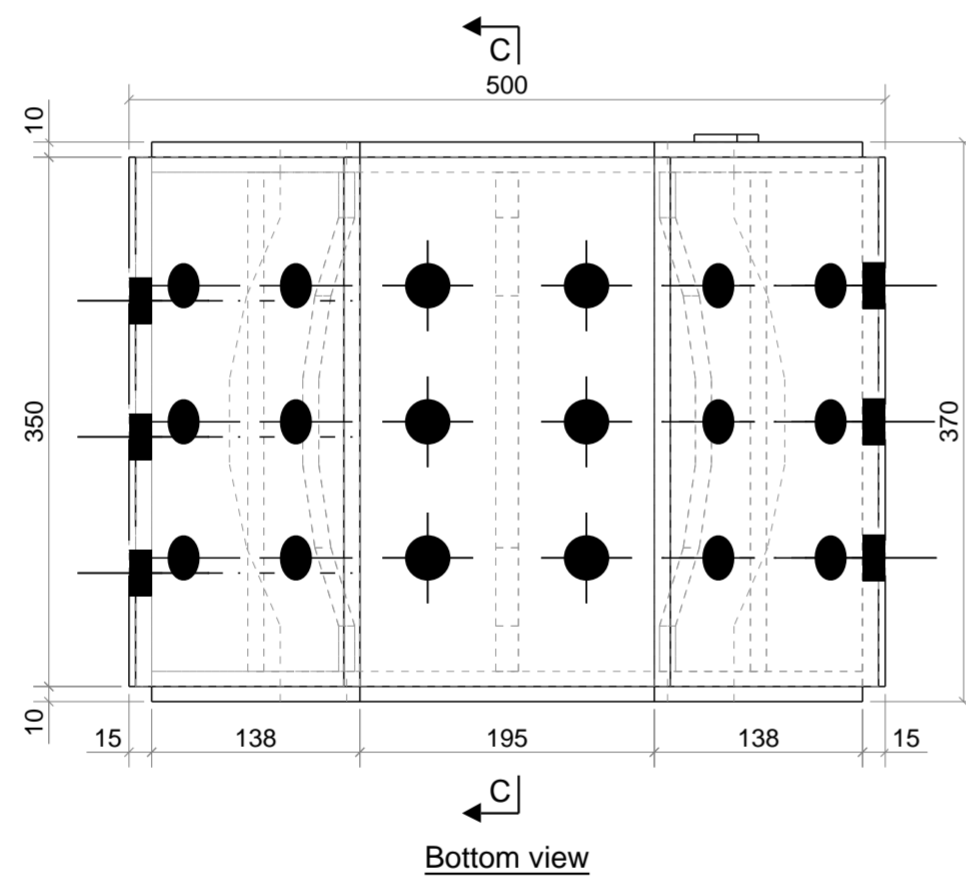
Frontview



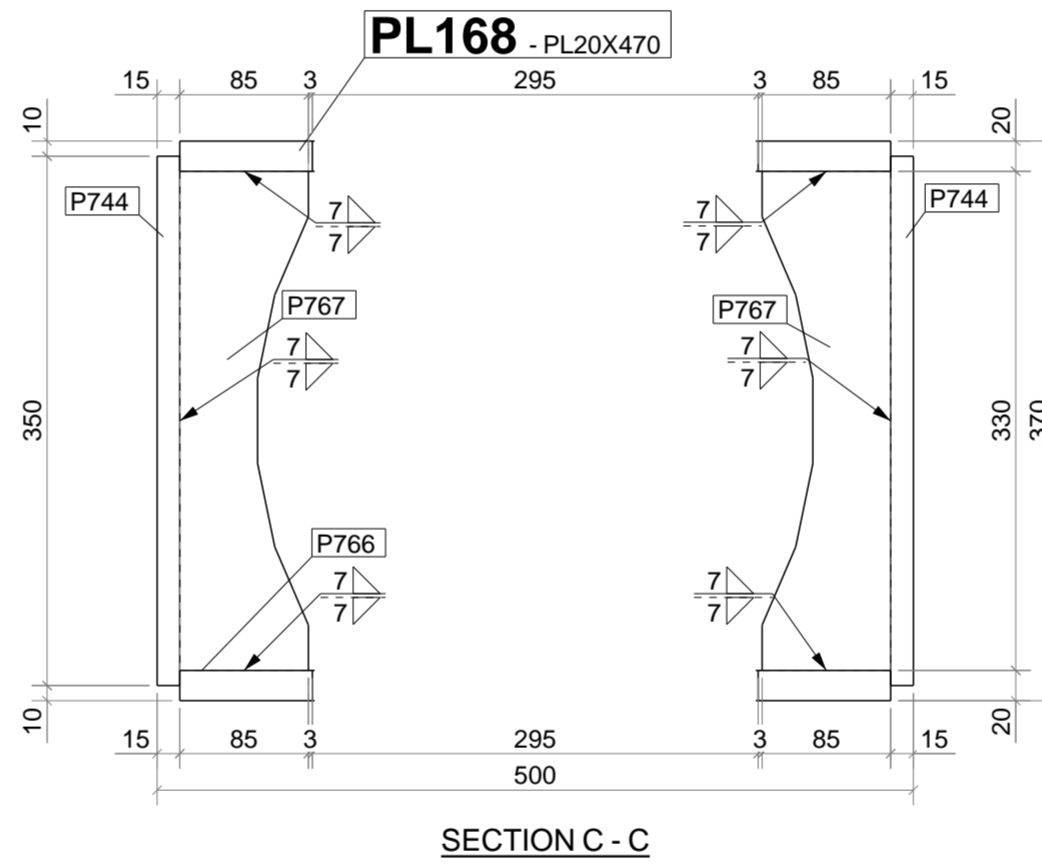
SECTION A - A



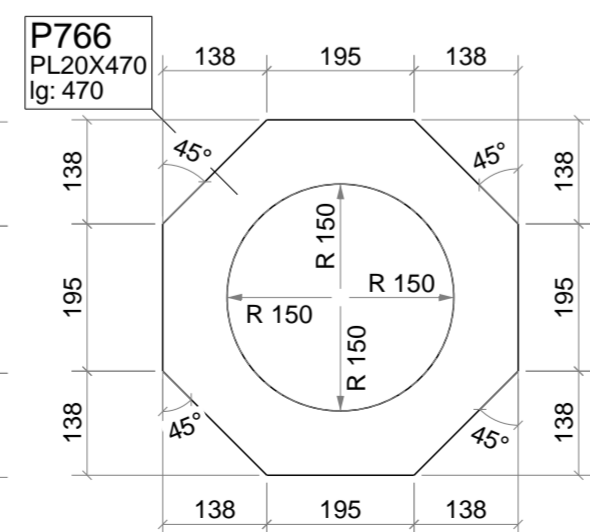
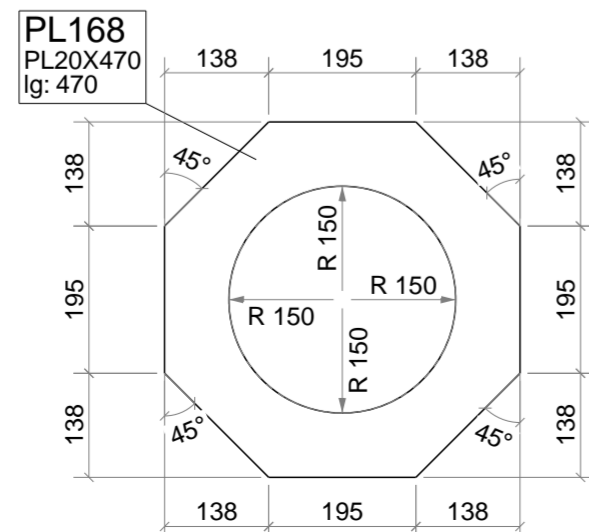
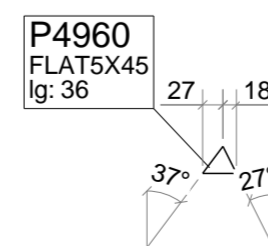
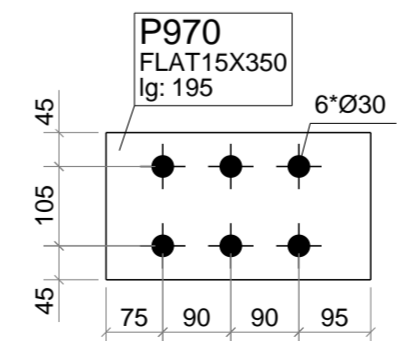
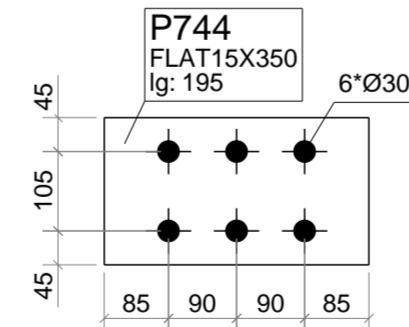
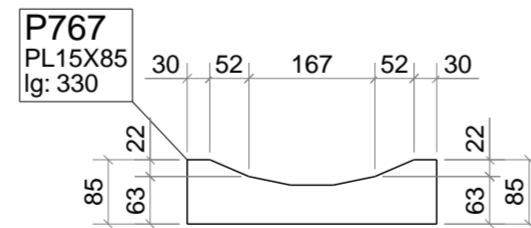
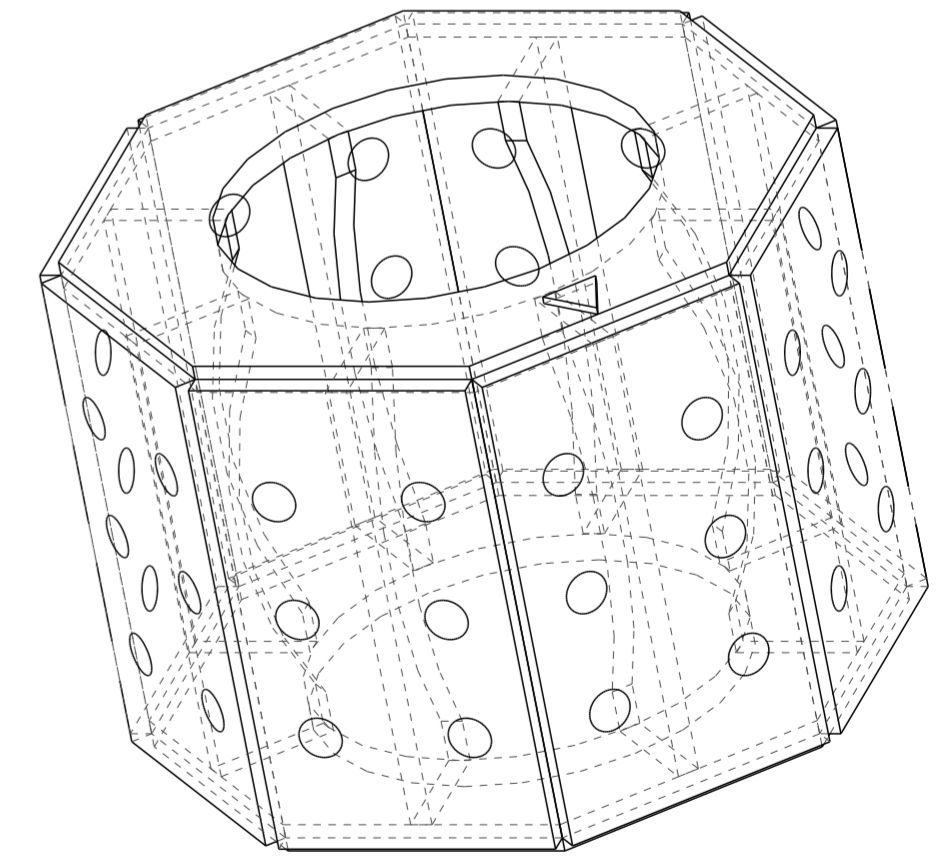
SECTION B - B



Bottom view

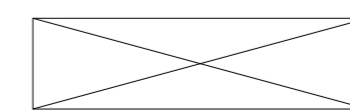


SECTION C - C



revision	date	drawn	check	description	status

Materials U.N.O.: Plates $T_p < 25\text{mm}$: S355J2, profiles: S355JR according to NEN-EN 10025-2. Hollow sections hot rolled: $D \leq 100$: S355JR, $D > 100$: S355JR according to NEN-EN 10210-1. Cold rolled: $D \leq 100$: S355JR, $D > 100$: S355JR according to NEN-EN 10219-1
 Welds: a=4 U.N.O. according to NEN-EN-ISO 2553:2014. Bolt grade 8.8, U.N.O.



drawn	OSB
check	
date	
revision	
size	A2
scale	1:5 1:10

order	
project	194003
title	Basisweg 10
	PLATE

drawing number	194003 - PL168
Status	

Projection:

Phase	Assembly	Number	Description
194003	PL168	1	Koepel

ASSEMBLY PART LIST Mark: PL168						Number: 1
Length (mm)	500	Fabrication and erection acc. to				
Surface treatment	MN2	NEN-EN 1090-2: 2018				
Color	RAL9010	Execution class	EXC2			
Remark		Functional tolerance class	1			
		Production category	P1			
Part	Profile	Material	Number	Length (mm)	Weight (kg)	
P744	ST15X350	S355J2	6	195	48.1	
P766	PL20X470	S355J2	1	470	17.8	
P767	PL15X85	S355J2	8	330	20.7	
P970	ST15X350	S355J2	2	195	16.0	
P4960	ST5X45	S355J2	1	36	0.0	
PL168	PL20X470	S355J2	1	470	17.8	
Total per assembly					120.4	