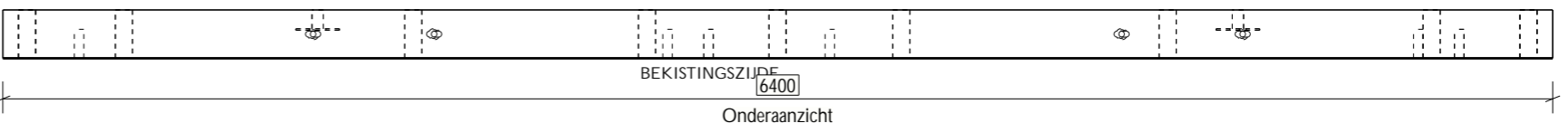
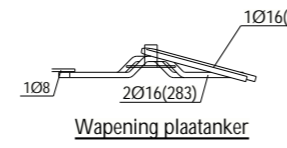
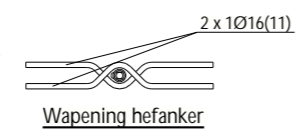


WAPENINGSBORDEREL							
Nummer	#	type net					
(N235)	1	8-150/8-150					
(N231)	1	10-150/10-150					
Nummer	#	Ø	Plooi vorm	Nummer	#	Ø	Plooi vorm
(1286)	4	Ø12	3140	(1287)	4	Ø12	6340
(11)	8	Ø16		(283)	8	Ø16	
(284)	4	Ø16		(1288)	22	Ø8	
(1289)	6	Ø16		(1290)	10	Ø16	
(1312)	16	Ø10		(1313)	1	Ø10	
(1314)	1	Ø10		(1321)	10	Ø10	
(1322)	86	Ø10		(1323)	16	Ø8	
(1324)	4	Ø10		(1373)	8	Ø12	
(1394)	22	Ø8					

Totaal: 305.3kg (staven)

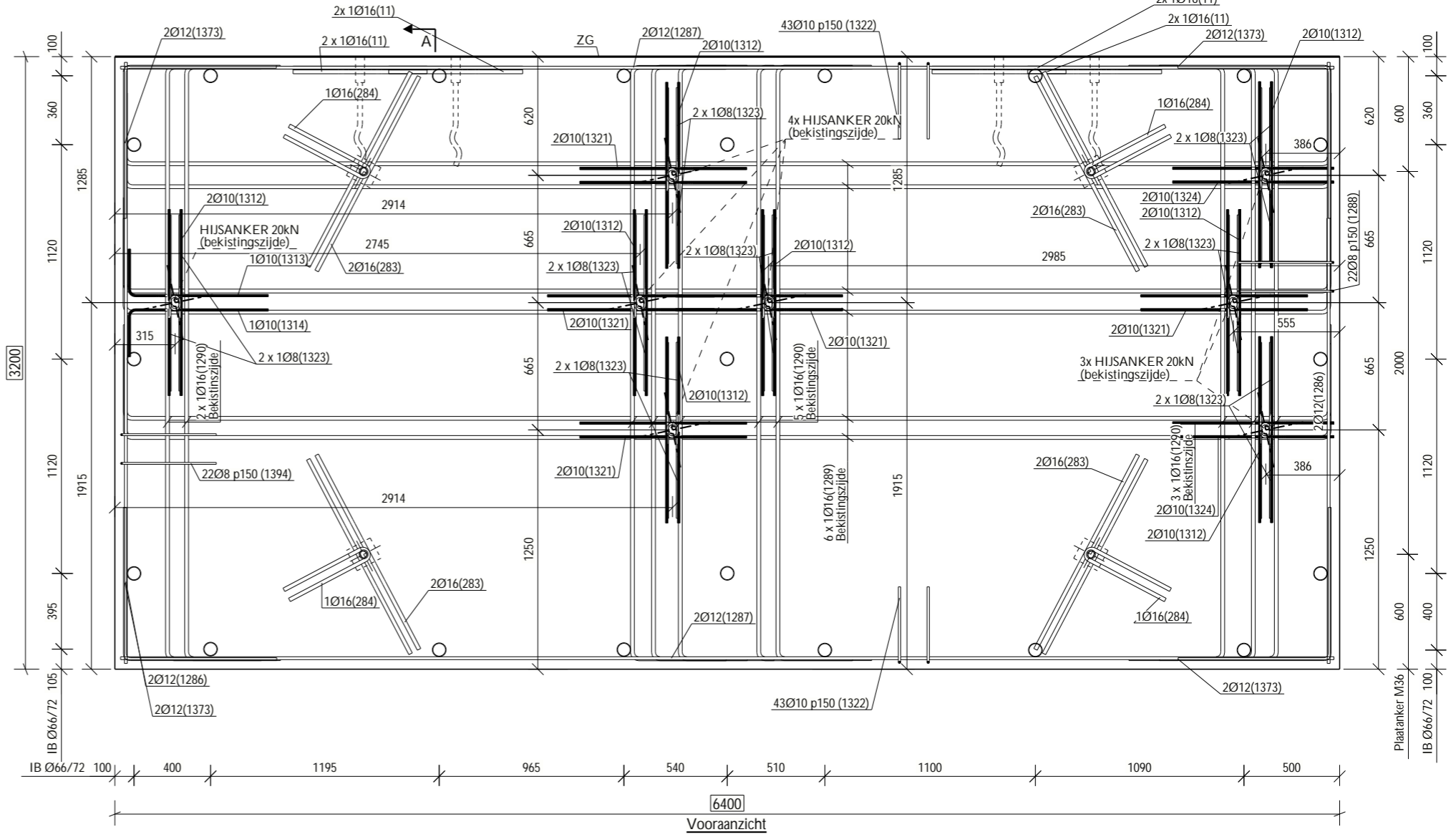
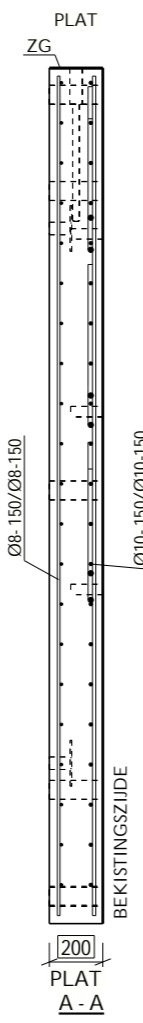
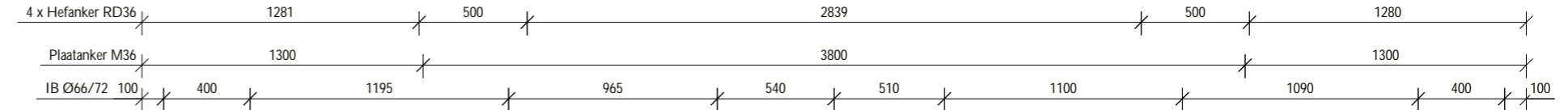
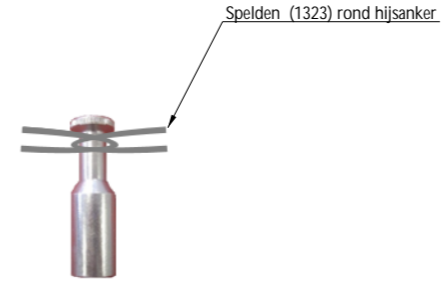
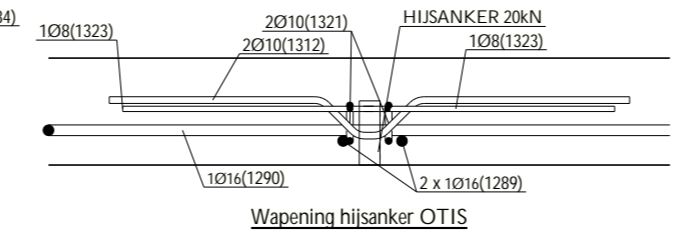
Totaal: 332.1kg (netten)

Afgestroken zijde!!!
Bekistingszijde !!!



Onderaanzicht

**HIJSANKERS GELEVERD
DOOR OTIS**



Vooraanzicht

TOEBEHORENLIJST

ZG	6400mm	1
HIJSANKER 20kN		8
Hefanker RD36		4
IB Ø66/72		21
Plaatanker M36		4

MATERIAAL EIGENSCHAPPEN	
Wapening:	BE500TS/BE500ES
Sterkteklasse beton:	C45/55
Omgevingsklasse:	EE3
Betondekking:	30mm

SF18-0297-BO
DELHAIZE Sint-Rochus
8500 Kortrijk

STADSBADER
N.V. STADSBADER S.A. Kanaalstraat 1, B-8530 Harelbeke info@stadsbader.com - www.stadsbader.com

DATUM:	28/05/19	MERK:	20PD2
GETEKEND:	JV	AANTAL:	1
GEWICHT:	10.24 ton	DIKTE:	200 mm
OPPERVLAKTE:	20.48 m ²	INDEX:	A
VOLUME:	4.10 m ³	DATUM:	13/09/19