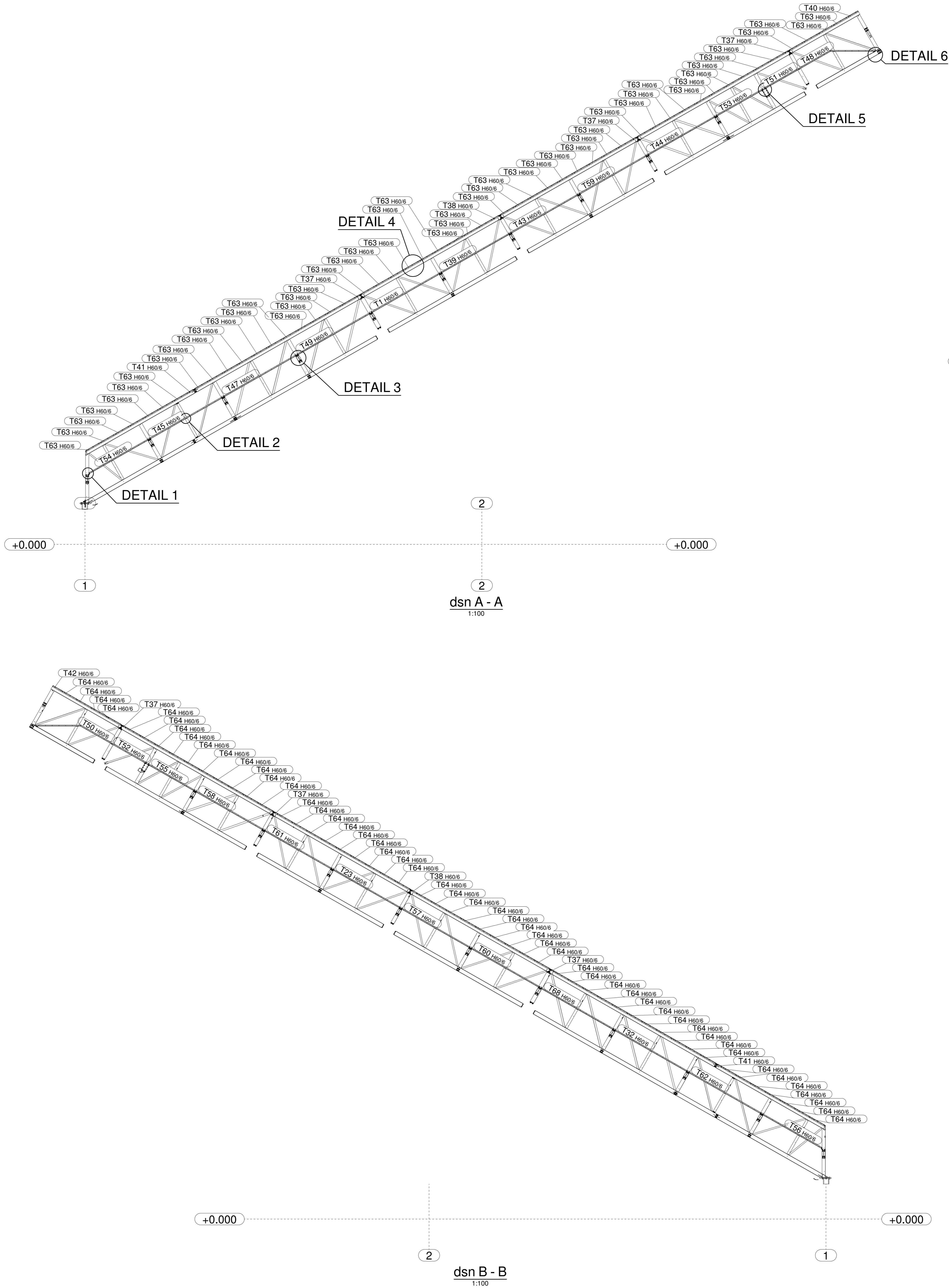
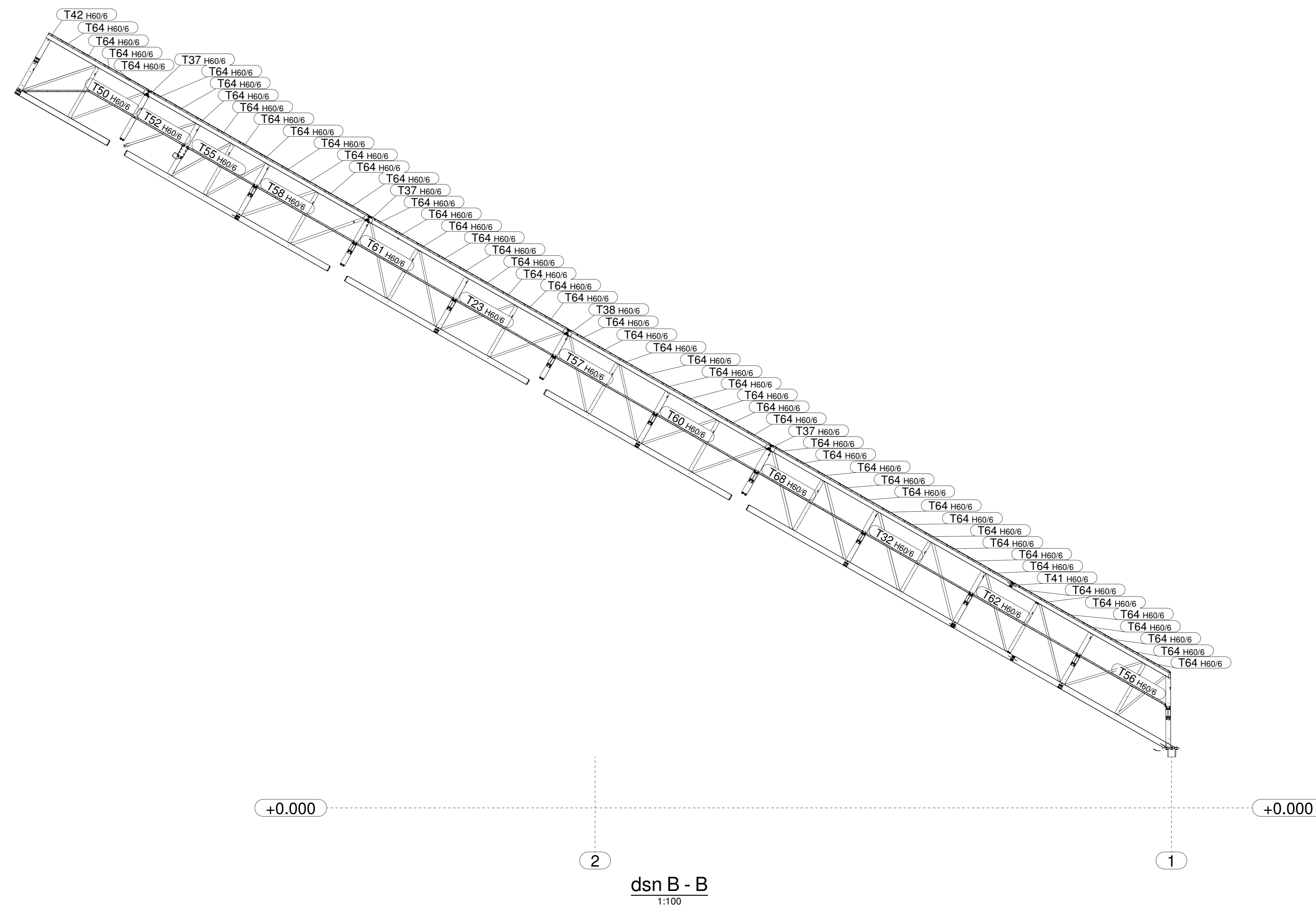


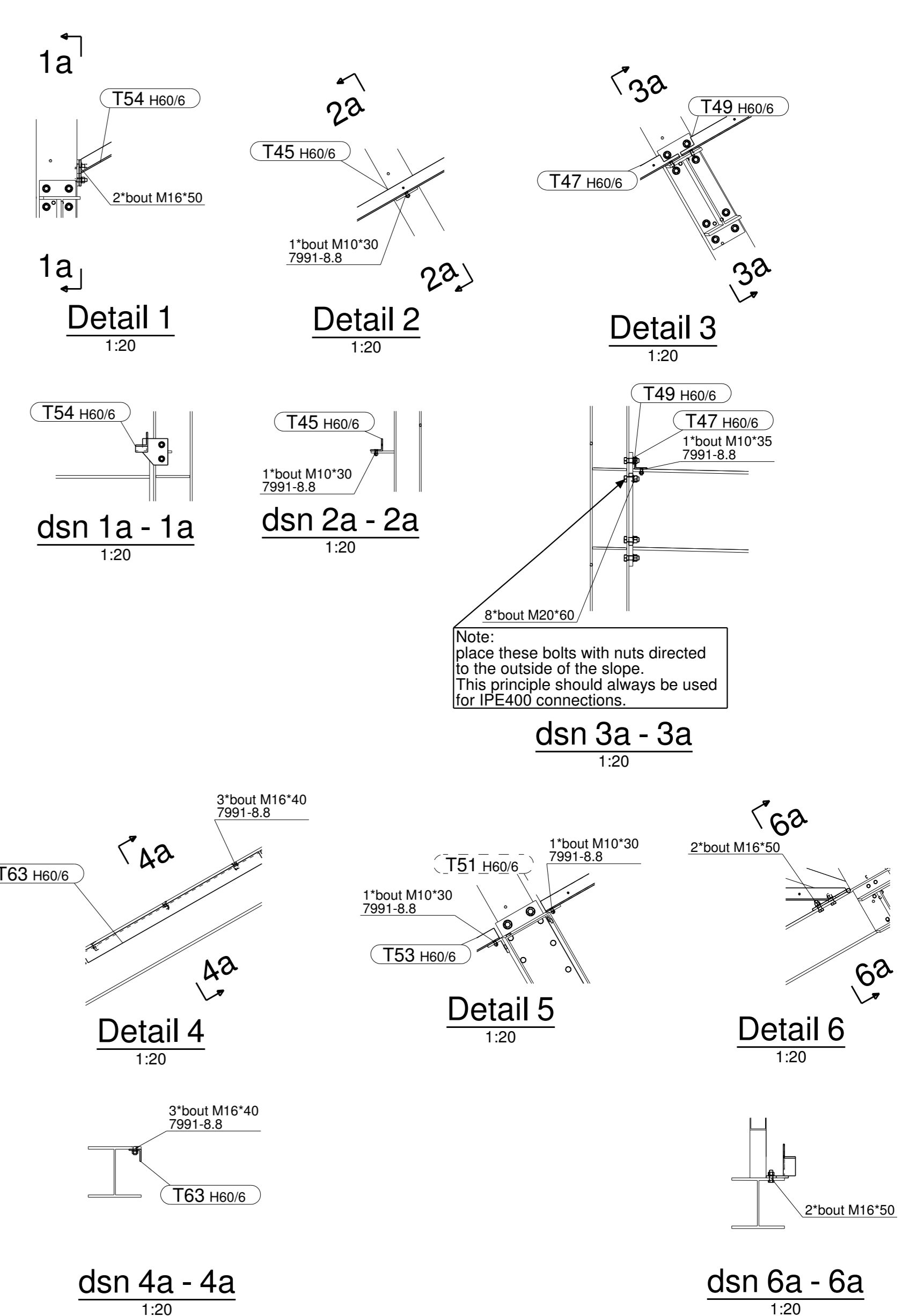
VIEW FROM THE TOP  
1:100



dsn A - A  
1:100



dsn B - B  
1:100



COMMENTS:  
Level +0,000 = +87,400m T.A.W.  
T.O.S.= Top of steel  
Anchorage according to drawing G1 and G2  
Isometric view according drawing G3  
Views according to drawing G4  
Sections according drawing G5  
Details according to drawing G6  
Lightning path according to drawing G7  
Emergency stairs according to drawing G10  
View of L-profiles for cladding G11

0.1	03.03.2020	First issue	GNA
rev.	datum	opmerking	getekend
Behandeling staalconstructie : Thermisch verzinken			
Materiaalkwaliteit : Alle profielen S355J0 i.a.v., alle kokers S235J0H-EN10219			
Alle buiscolommen S355J0H-EN10219 i.a.v.			
Bouten	8.8 EN ISO-BMR-4014/4017-4032-7089	Lassen	Lasafmetingen : tenzij anders aangegeven Laskwaliteit: ZIE WM 19024
thermisch verzinkt	T.A.V.	Fabricage en montage volgens EN1090-2:2008-AT.2011	Hoofdstaal Leuningen
		Uitvoeringsklasse:	EXC2 EXC1
		Functionele tolerantie klasse:	1 1
		Voorbewerkinggraad:	P1 P1
PROJECT :		Snowboardpiste Genk	
BETREFT :		VIEW OF L-PROFILES FOR CLADDING	
SCHAAL : 1:20	1:100	DATUM: 02.03.2020	CD : NR. : REV.
GET. : RDK	OEZ. : R. Hulmans	19024	G11 O.1