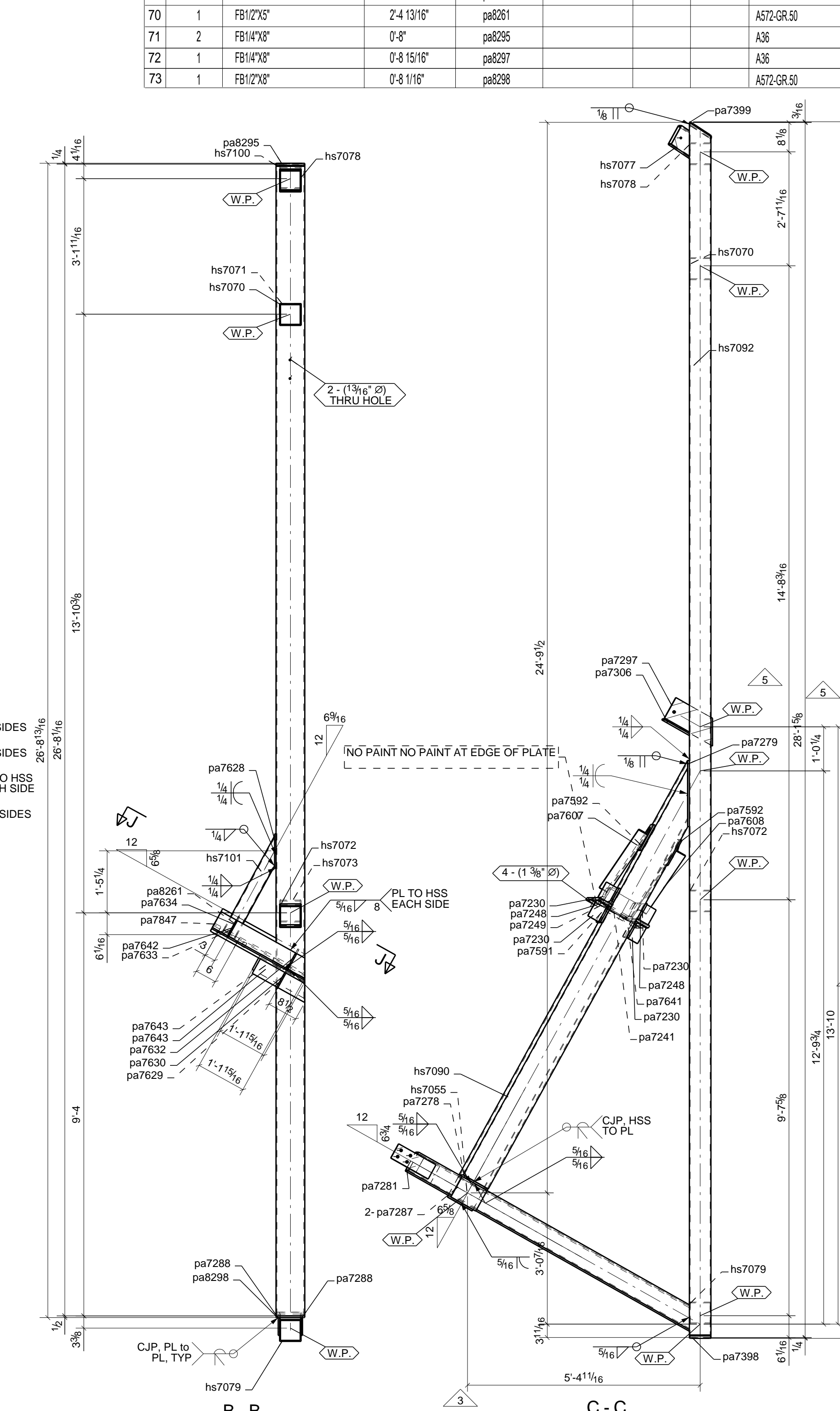
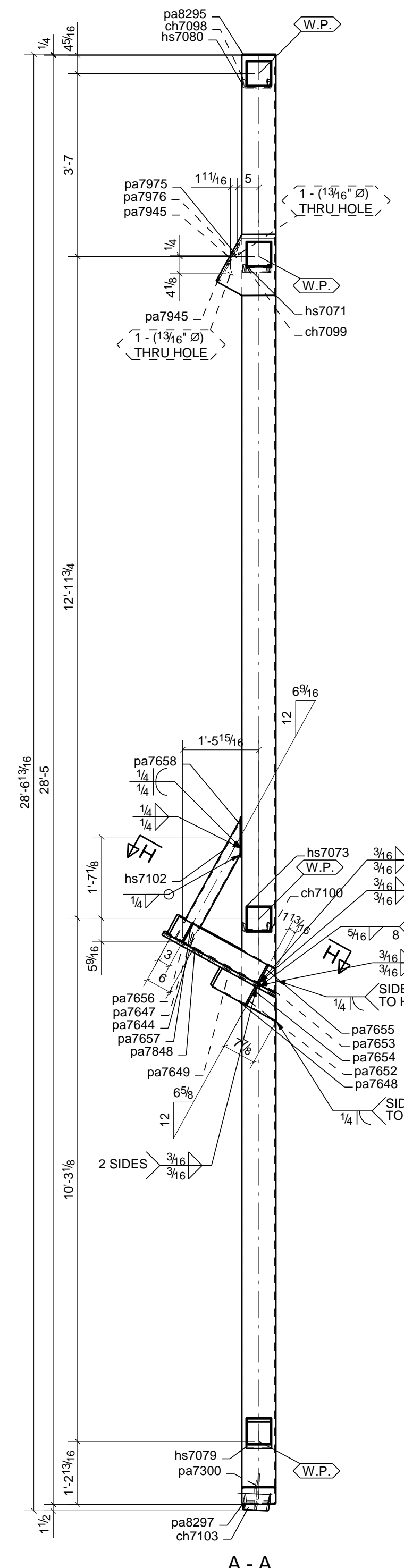
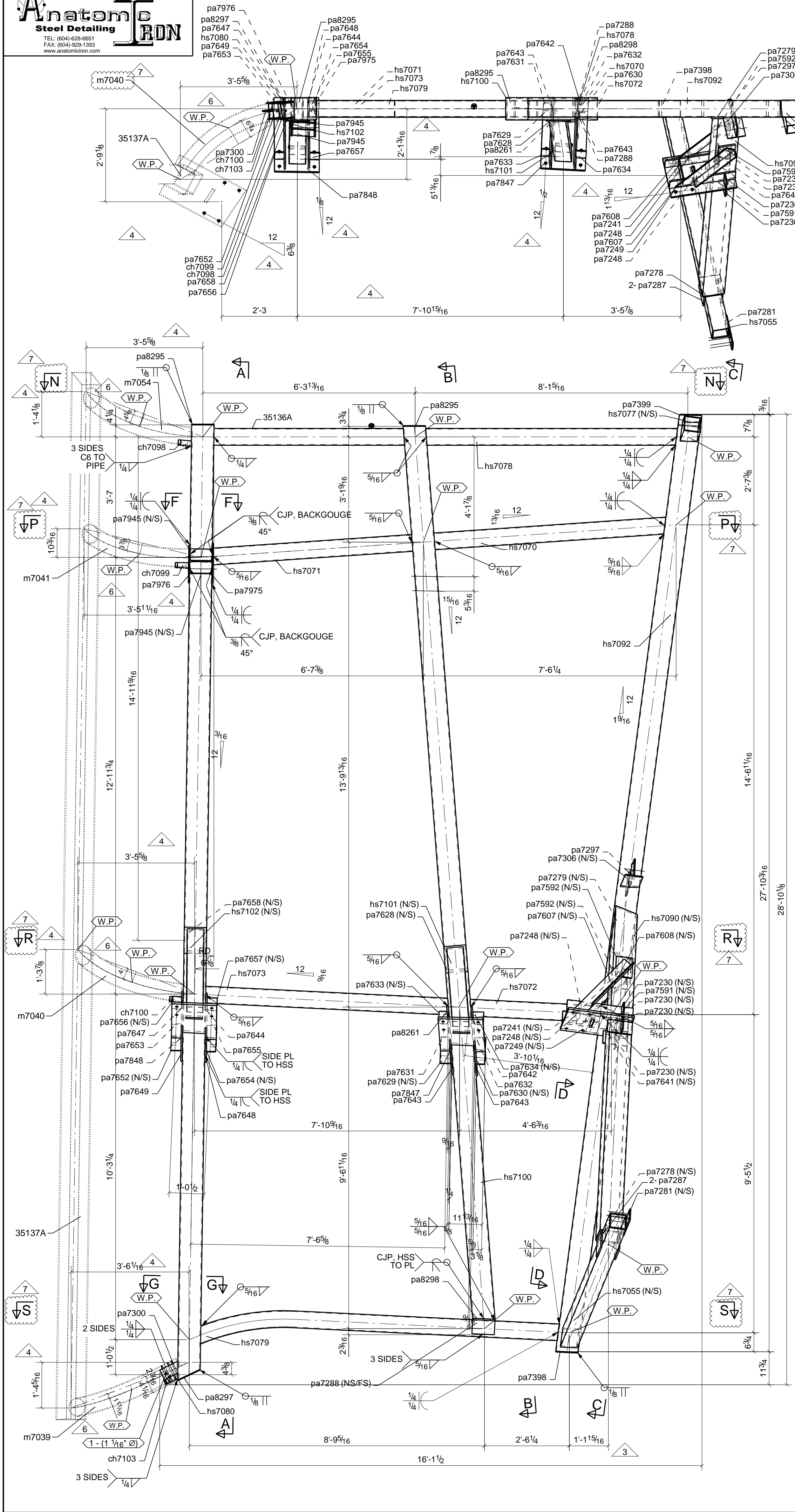


DETAILED BY:



TEL: 804-628-6661  
FAX: 804-628-1383  
WWW.ANATOMYSTEEL.COM



ONE - HSS - 35136A

Quantity	Material	Length	Template Mark	Shipping Mark	Mill Mark	Finish	Remarks
60	1	PL3/8"x3 3/8"	0-4 15/16"	pa7654			A572-GR.50
61	1	PL3/8"x3 9/16"	0-5 1/8"	pa7655			A572-GR.50
62	1	PL3/8"x3 3/8"	0-5"	pa7656			A572-GR.50
63	1	PL3/8"x3 5/8"	0-5"	pa7657			A572-GR.50
64	1	FB3/8"x8"	0-9 3/8"	pa7658			A572-GR.50
65	1	PL3/4"x15 15/16"	2-6"	pa7647			A572-GR.50
66	1	PL3/4"x16"	2-6 9/16"	pa7648			A572-GR.50
67	2	PL3/8"x4 11/16"	0-8 1/8"	pa7945			A572-GR.50
68	1	PL3/8"x14 11/16"	1-2 7/16"	pa7975			A572-GR.50
69	1	PL3/8"x13 7/16"	1-1 11/16"	pa7976			A572-GR.50
70	1	FB1/2"x5"	2-4 13/16"	pa8261			A36
71	2	FB1/4"x8"	0-8"	pa8295			A36
72	1	FB1/4"x8"	0-8 15/16"	pa8297			A36
73	1	FB1/2"x8"	0-8 11/16"	pa8298			A572-GR.50

### Bill Of Material

Quantity	Material	Length	Template Mark	Shipping Mark	Mill Mark	Finish	Remarks
1	1						
2	1	HSS6X6X1/4	5'-8 1/16"	35136A			A500-GR.B
3	1	CX8x2	0-4 15/16"	ch7098			A36
4	1	CX8x2	0-4 13/16"	ch7099			A36
5	1	CX8x2	0-6 1/16"	ch7100			A36
6	1	CX8x2	0-5 5/8"	ch7103			A36
7	1	HSS6X6X5/16	7-7 1/2"	hs7055			A500-GR.B
8	1	HSS6X6X1/4	6-11"	hs7070			A500-GR.B
9	1	HSS6X6X1/4	5-11 7/16"	hs7071			A500-GR.B
10	1	HSS6X6X1/4	3-10 7/8"	hs7072			A500-GR.B
11	1	HSS6X6X1/4	7-3 1/8"	hs7073			A500-GR.B
12	1	HSS6X6X1/4	0-7 5/8"	hs7077			A500-GR.B
13	1	HSS6X6X1/4	7-5 7/8"	hs7078			A500-GR.B
14	1	HSS6X6X1/4	10-9 15/16"	hs7079			A500-GR.B
15	1	HSS6X6X5/16	28-4 13/16"	hs7080			A500-GR.B
16	1	HSS6X6X1/4	10-11 15/16"	hs7090			A500-GR.B
17	1	HSS6X6X1/4	28-1 11/16"	hs7092			A500-GR.B
18	1	HSS6X6X5/16	26-8 1/16"	hs7100			A500-GR.B
19	1	HSS6X6X1/4	2-6 1/2"	hs7101			A500-GR.B
20	1	HSS6X6X1/4	2-7 15/16"	hs7102			A500-GR.B
21	4	PL3/8"x3 1/2"	0-5"	pa7230			A572-GR.50
22	1	FB3/8"x5"	0-8 1/16"	pa7241			A572-GR.50
23	2	FB1/2"x5"	1-11 15/16"	pa7248			A572-GR.50
24	1	PL3/4"x16"	1-11 15/16"	pa7249			A572-GR.50
25	1	FB1/2"x8"	0-8"	pa7278			A572-GR.50
26	1	PL1/2"x8 9/16"	1-6 3/8"	pa7279			A572-GR.50
27	1	FB3/8"x4 1/2"	1-0"	pa7281			A572-GR.50
28	2	FB1/2"x6 1/2"	0-8"	pa7287			A572-GR.50
29	2	FB3/8"x5"	0-8"	pa7288			A572-GR.50
30	1	FB3/8"x6 3/4"	1-3 5/8"	pa7297			A572-GR.50
31	1	FB3/8"x5 1/2"	0-7 13/16"	pa7300			A572-GR.50
32	1	FB3/8"x6 1/2"	0-8 7/8"	pa7306			A572-GR.50
33	1	FB1/4"x6"	0-8"	pa7398			A36
34	1	PL1/4"x7 1/8"	0-8 3/8"	pa7399			A36
35	1	FB1/2"x5"	0-8 15/16"	pa7591			A572-GR.50
36	2	FB1/2"x6"	0-8"	pa7592			A572-GR.50
37	1	L4X3X3/8	2-5 1/8"	pa7607			A36
38	1	L4X3X3/8	2-5 1/8"	pa7608			A36
39	1	FB3/8"x8"	0-8 1/2"	pa7628			A572-GR.50
40	1	PL3/8"x4"	0-5"	pa7629			A572-GR.50
41	1	PL3/8"x1 1/4"	0-5 1/16"	pa7630			A572-GR.50
42	1	PL3/8"x5 1/16"	0-5"	pa7631			A572-GR.50
43	1	PL3/8"x4"	0-5 1/16"	pa7279			A572-GR.50
44	1	PL3/8"x3 5/16"	0-5"	pa7633			A572-GR.50
45	1	PL3/8"x15 1/16"	0-5"	pa7634			A572-GR.50
46	1	FB1/2"x5"	0-8 15/16"	pa7641			A572-GR.50
47	1	FB1/2"x5"	2-5 5/16"	pa7642			A572-GR.50
48	2	FB1/2"x5"	1-4 11/16"	pa7643			A572-GR.50
49	1	FB1/2"x5"	2-4 11/16"	pa7644			A572-GR.50
50	1	FB1/2"x5"	2-5 3/16"	pa7647			A572-GR.50
51	1	FB1/2"x5"	1-5 1/8"	pa7648			A572-GR.50
52	1	FB1/2"x5"	1-5 5/8"	pa7649			A572-GR.50
53	1	PL3/8"x3 5/8"	0-5 1/8"	pa7652			A572-GR.50
54	1	PL3/8"x3 7/16"	0-5"	pa7653			A572-GR.50

### FIELD BOLTS

Quantity	Material	Length	Template Mark	Shipping Mark	Mill Mark	Finish	Remarks
55	2	BOLT_3/4"DIA_A307_10 1/2"	10 1/2"	A307			1.51
56	1	BOLT_3/4"DIA_A307_8"	8"	A307			1.18
57	1	BOLT_3/4"DIA_A307_7 3/4"	7 3/4"	A307			1.16
59	1	BOLT_3/4"DIA_A307_7"	7"	A307			1.06

REF: E425  
 REF: ERECTOR / CONTRACTOR NOTE!!!  
 BACKCHARGES FOR CORRECTIVE WORK OR REPLACEMENT  
 OF MATERIAL WILL NOT BE ACCEPTED UNLESS AUTHORIZED  
 BY BECK STEEL, INC. BEFORE SUCH COSTS ARE INCURRED.  
 CLOUDED AREAS ARE FOR VERIFICATION, AND IF NOT MARKED, WILL BE ASSUMED CORRECT AS SHOWN!

REV#	DATE	DESCRIPTION OF REVISION	DET BY	CHK BY
1	07/31/2020	ISSUED FOR APPROVAL	KSL	BLU
2	10/30/2020	ISSUED FOR FABRICATION	KSL	GG
3	10/30/2020	RE-ISSUED FOR FABRICATION	KSL	GG
4	02/04/2021	RE-ISSUED FOR FABRICATION	PK	GG
5	02/11/2021	RE-ISSUED FOR FABRICATION	DZ	GG
6	02/12/2021	RE-ISSUED FOR FABRICATION	DZ	GG
7	02/16/2021	RE-ISSUED FOR FABRICATION	KSL	GG
8	02/22/2021	RE-ISSUED FOR FABRICATION	DZ	GG
9	02/23/2021	RE-ISSUED FOR FABRICATION	DZ	GG

BOLTS: A325 X-TC (U.N.O.) HOLES: 1" 1/16" (U.N.O.)  
 FAB SPEC: A992 (U.N.O.) SURFACE PREP: SP-3  
 SHOP PAINT: CARBOLINE CARBOCAT 8229

### NOTES:

SYMBOL INDICATE CONNECTION SIDE

HOLES NOTED "SLIP CRITICAL" SHALL HAVE NO PAINT WITHIN 3" OF THOSE HOLES

401 N. Loop 289  
 LUBBOCK, TX. 79403  
 PHONE (806) 762-3255  
 www.becksteel.com

AISC CERTIFIED FABRICATOR

DESCRIPTION: HSS  
 STRUCTURE: ORANGE COUNTY MUSEUM OF ART  
 LOCATION: 3333 AVENUE OF THE ARTS, COSTA MESA, CA 92626  
 ARCHITECT: Morphosis  
 CUSTOMER: Clark Construction  
 DWG. BY: HS DATE: 07/31/2020  
 CHK. BY: GG DATE: 07/31/2020

SHEET: 35136A  
 JOB NO: 1945