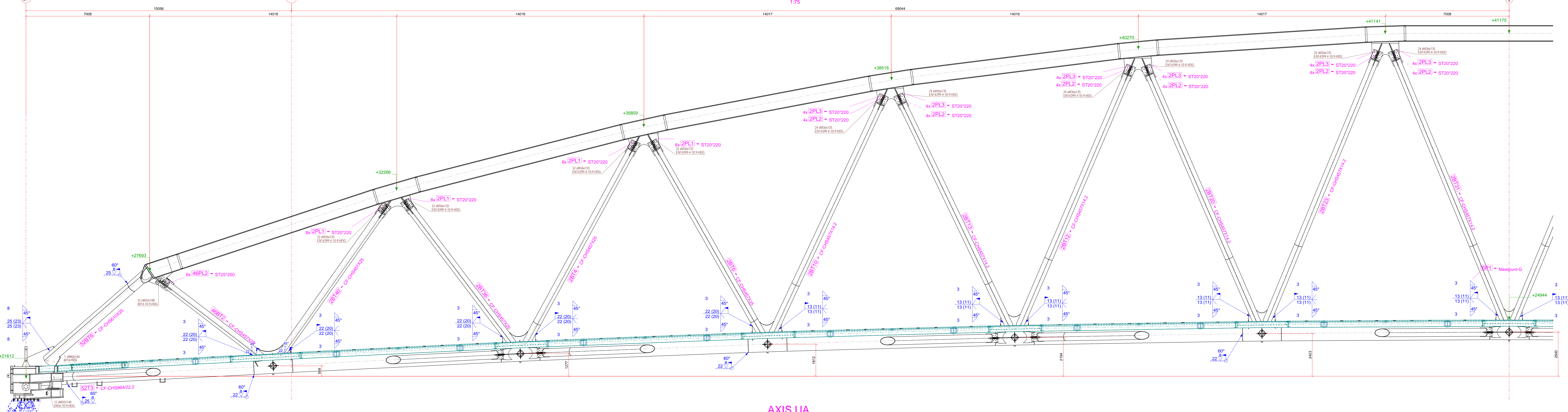
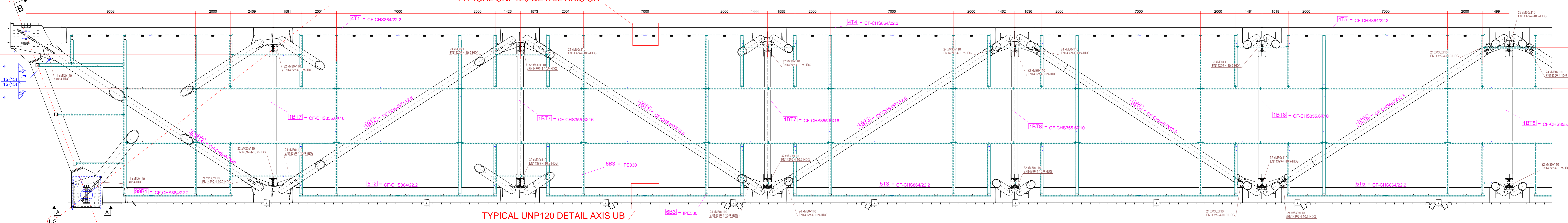


AXIS UB  
1:75



AXIS UA  
1:75



ONDERVLAK  
1:75

- \*Voor Mega Truss rechts t.o.v. as-Y zie tekening: S-UO-032
- \*Voor Ondersteuningsconstructie zie tekening: S-UO-033
- \*Voor oplegdetail bok zie tekening: S-UO-040
- \*Voor detail nok tpv oplegging zie tekening: S-UO-041
- \*Alle bouten M30x120 tenzij anders vermeld

\*Groen = Ondersteuningsconstructie  
\*Blauw = Opleg bok



NOTES

Classification:	Performance class: EXC3	Corresponding detail calculation: Document: 194022-0002
Functional tolerance class:	1	
Preparatory grade:	1/2	
Material quality, unless noted otherwise:		
Plated Sections:	NEN-EN 10025 S355J2	
Plates Spec-Steel:	NEN-EN 10025 S355J2	
Welded Profiles:	NEN-EN 10025 S355J2	
Hot Rolled Hollow Sections:	NEN-EN 10210 D=100 S355J2 D=100 S355J2	
Cold Formed Sections:	NEN-EN 10219 D=100 S355J2 D=100 S355J2	
Plates perpendicular oriented to the rolling direction due to tensile load:	NEN-EN 10214 Tp=30mm S355J2 Z35	
Bolt quality, unless noted otherwise:		
Anchors (incl. dg galvanised):	4.6 (DIN6915 / 8.8 (DIN6915))	
Nuts (incl. dg galvanised):	8.8 (DIN 934)	
Washers (incl. dg galvanised):	Class 8 (ISO 4032)	
Threaded ends (incl. dg galvanised):	8.8	
Surface treatment:		
Treatment 1:	C13	

3	23-02-21 T.O.	AF	Correctie aanvuk	Issued For Construction
4	09-02-21 T.O.	AF	Marken aanvukken (opvang)	Issued For Construction
2	07-12-20 T.O.	AF	Bouten vervangen	Issued For Construction
1	25-09-20 DP	AF	Issued For Construction	Issued For Construction
0	31-07-20 DP	AF	Issued For Construction	Issued For Construction

BAM Bouw en Techniek BV  
 project: 194022-100  
 drawing size: 1500x841  
 revision: 4  
 drawing number: S-UO-031