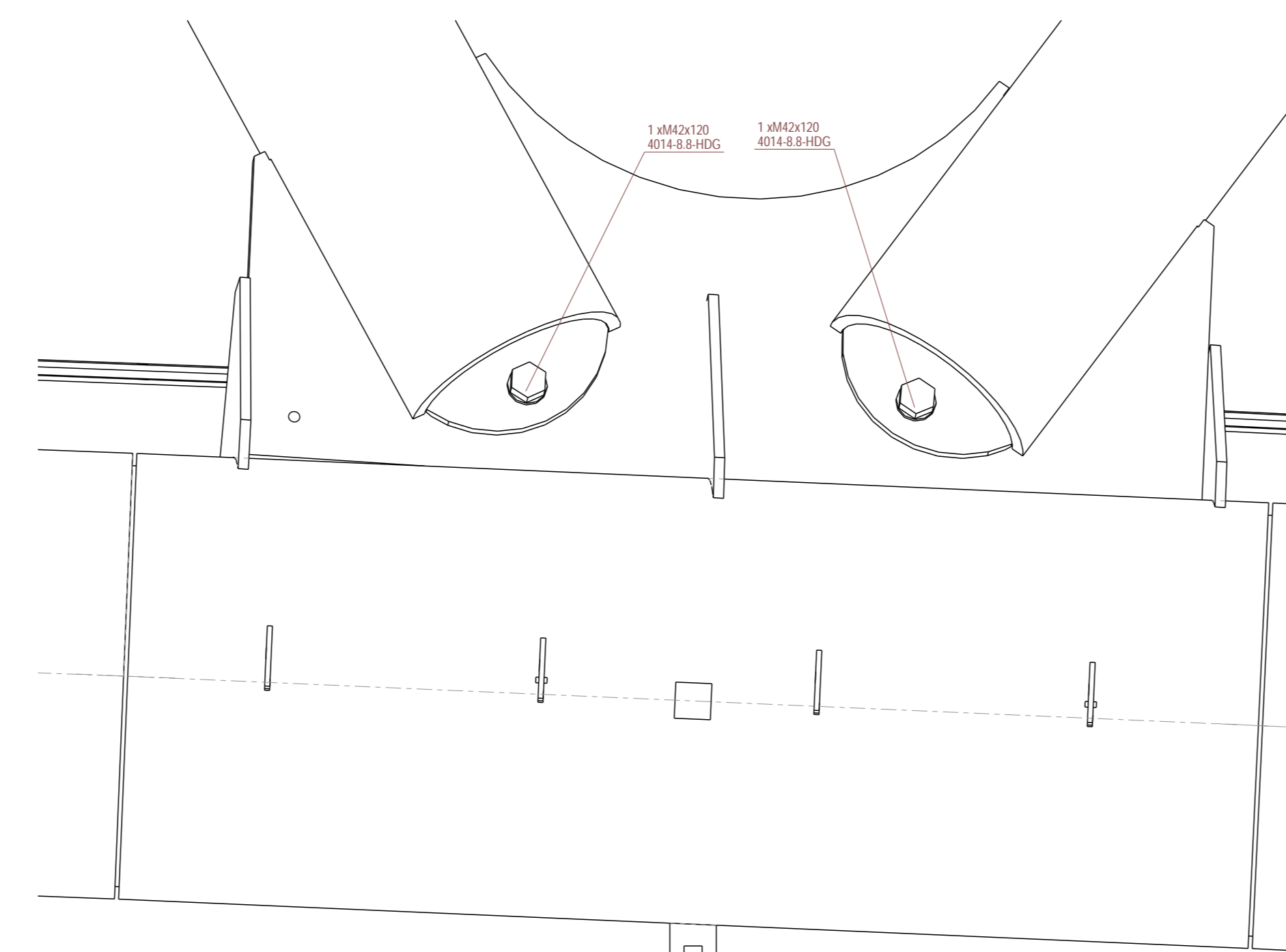


Detail A, 1:10



Detail B, 1:10



OSB-DOP-005-1-NL

NOTES		Corresponding detail calculation:
Classifications:		Document : 194022-0002
Performance class	: EXC3	
Functional tolerance class	: 1	
Preprocessing grade	: P2	
Material quality, unless noted otherwise:		
Ballbed Sections	EN EN 10025	S355J2
Plates T=25mm	EN EN 10025	S235J2
Welded Profiles	EN EN 10025	S355J2
Hot Rolled Hollow Sections	EN EN 10210	D=100: S355J2 D=100: S355J2
Cold Formed Sections	EN EN 10219	D=100: S355J2 D=100: S355J2
Plates perpendicular oriented to the rolling direction due to tensile load	EN EN 10154	Tp=20mm: S355J2 Z35
Bolt quality, unless noted otherwise:		
Anchors	not galvanized	4.6 (DIN934) / 8.8 (DIN934)
Bolts	not galvanized	8.8 (DIN 934)
Nuts	not galvanized	Class 8 (DIN 934)
Washers	not galvanized	(DIN 1234)
Thread ends	not galvanized	: 8.8
Surface treatment:		
	Treatment 1: (C3)	

revision	date	drawn	check	description	status
2	07-12-20	T.O.	AF	Roeten samenvat	Issued For Construction
1	25-09-20	DP	AF	Issued for Construction	Issued For Construction
0	31-07-20	DP	AF	Issued for Construction	Issued For Construction

BAM Bouw en Techniek BV
 project
 Dakconstructie AFAS Stadion
 title
 Mega Truss
 3D view en details
 order
 194022-100
 Oostingh Staalbouw BV
 Postbus 30220
 2220 CA Katwijk
 Nederland
 drawing size
 1500x841
 revision
 2
 drawing number
 S-UO-034
 +31 (0)71 40 97000
 info@oostingh.nl

