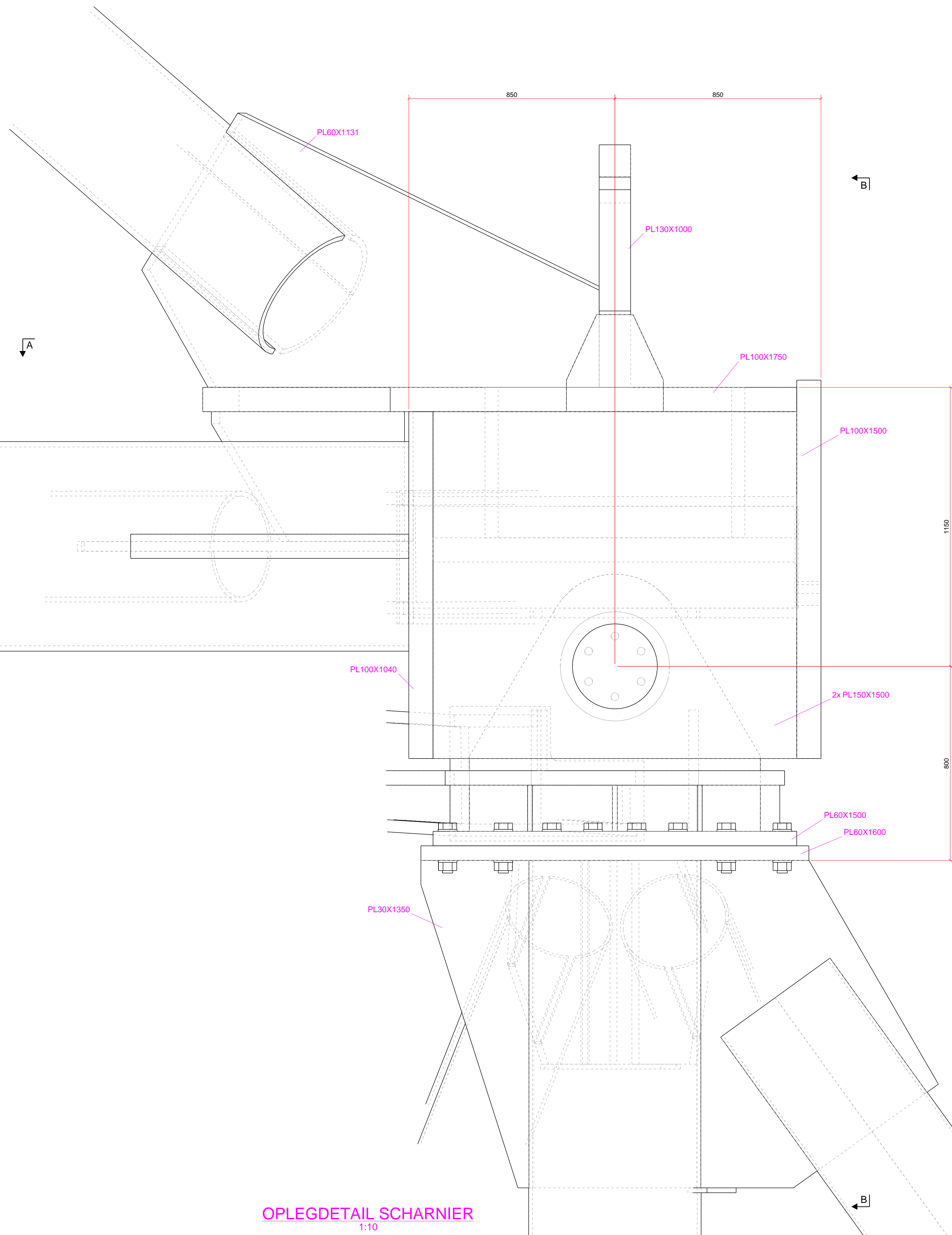
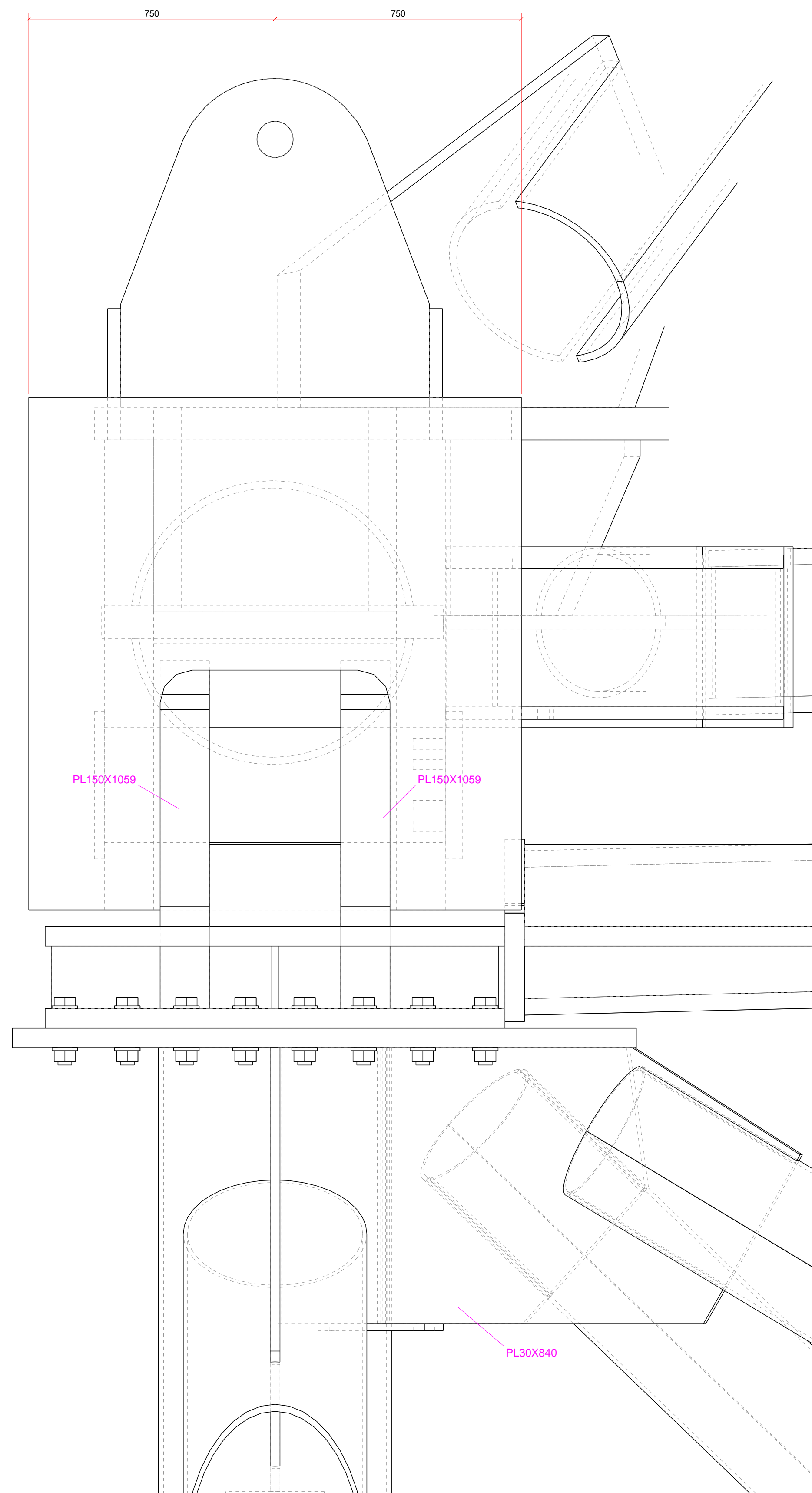


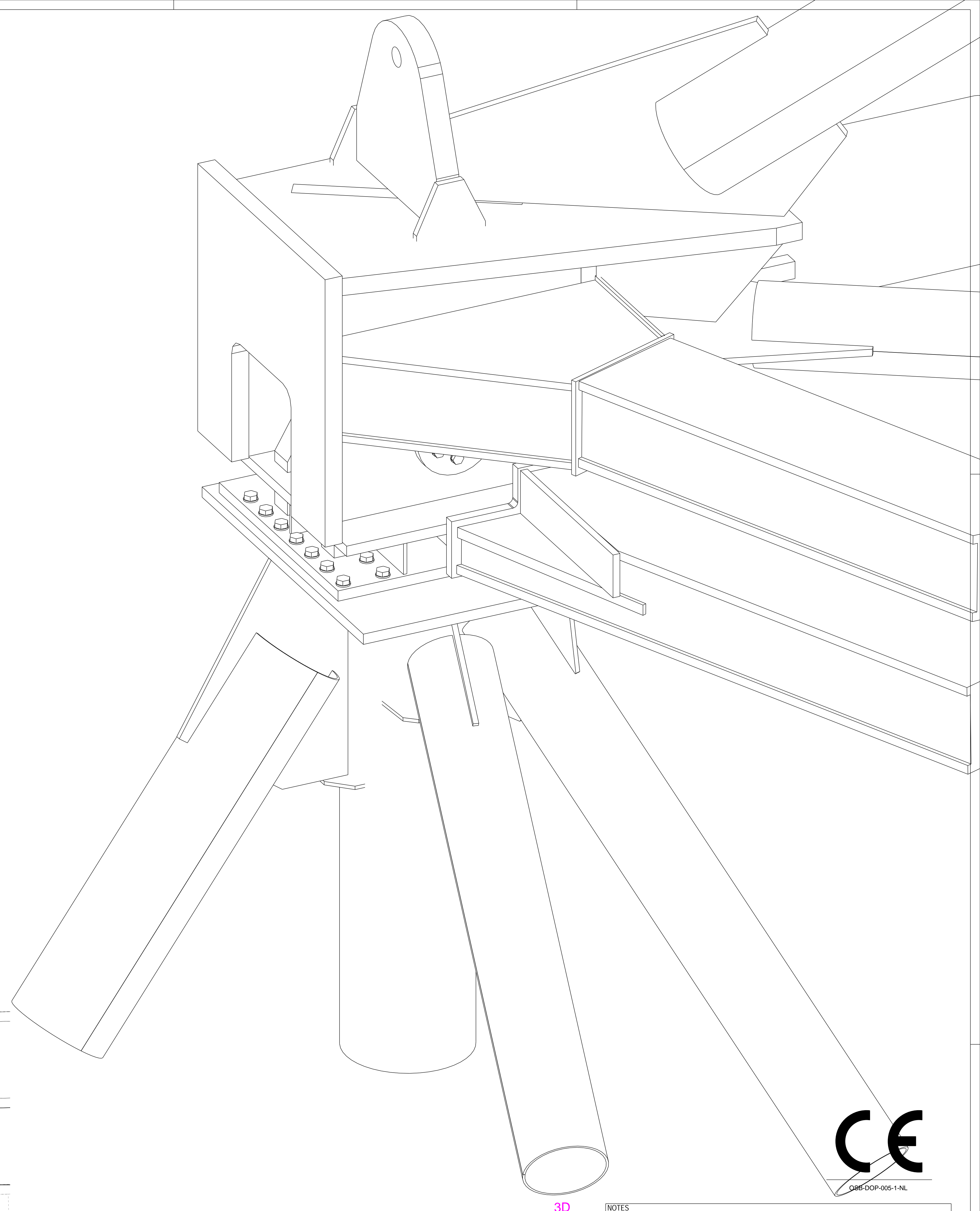
SECTION A - A



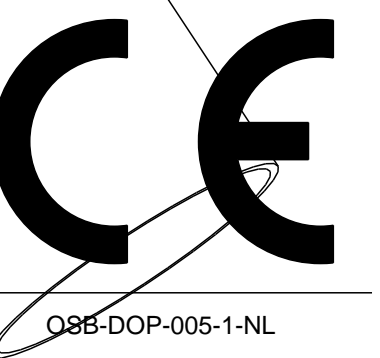
OPLEGDETAIL SCHARNIER
1:10



SECTION B - B



3D



NOTES

Classifications:	Performance class : EXC3	Corresponding detail calculation: Document : 194022-
	Functional tolerance class : P2	
	Preprocessing grade : P2	
Material quality, unless noted otherwise:		
Roller Sections	(NEN-EN 10025) : S355J2	
Plates (e=25mm)	(NEN-EN 10025) : S355J2	
Welded Profiles	(NEN-EN 10025) : S355J2	
Hot Rolled Hollow Sections	(NEN-EN 10210) D=100 : S355J2	D=100 : S355J2
Cold Formed Sections	(NEN-EN 10219) D=100 : S355J2	D=100 : S355J2
Plates perpendicular oriented to the rolling direction due to tensile load	(NEN-EN 10164) T _p =30mm : S355J2-Z35	
Bolt quality, unless noted otherwise:		
Anchors	(not dip galvanized)	: 4.6 (bored) / 8.8 (straight)
Bolts	(not dip galvanized)	: 8.8 (ISO 4014)
Nuts	(not dip galvanized)	: Class 8 (ISO 4032)
Washers	(not dip galvanized)	: DIN126
Threaded ends	(not dip galvanized)	: 8.8
Surface treatment:		
	Treatment 1: (C5)	

0	04-09-20	DP	AF	Ter info	Ter info
revision	date	drawn	check	description	status
client					
BAM Bouw en Techniek BV					
project					
Dakconstructie AFAS Stadion					
title					
Mega Truss					
Oplegdetail scharnier					
drawing number					
194022-100					
S-UO-040					

Oostingh Staalbouw BV
Postbus 3020
2220 CA Katwijk
Nederland

+31 (0)71 40 97000

info@oostingh.nl

