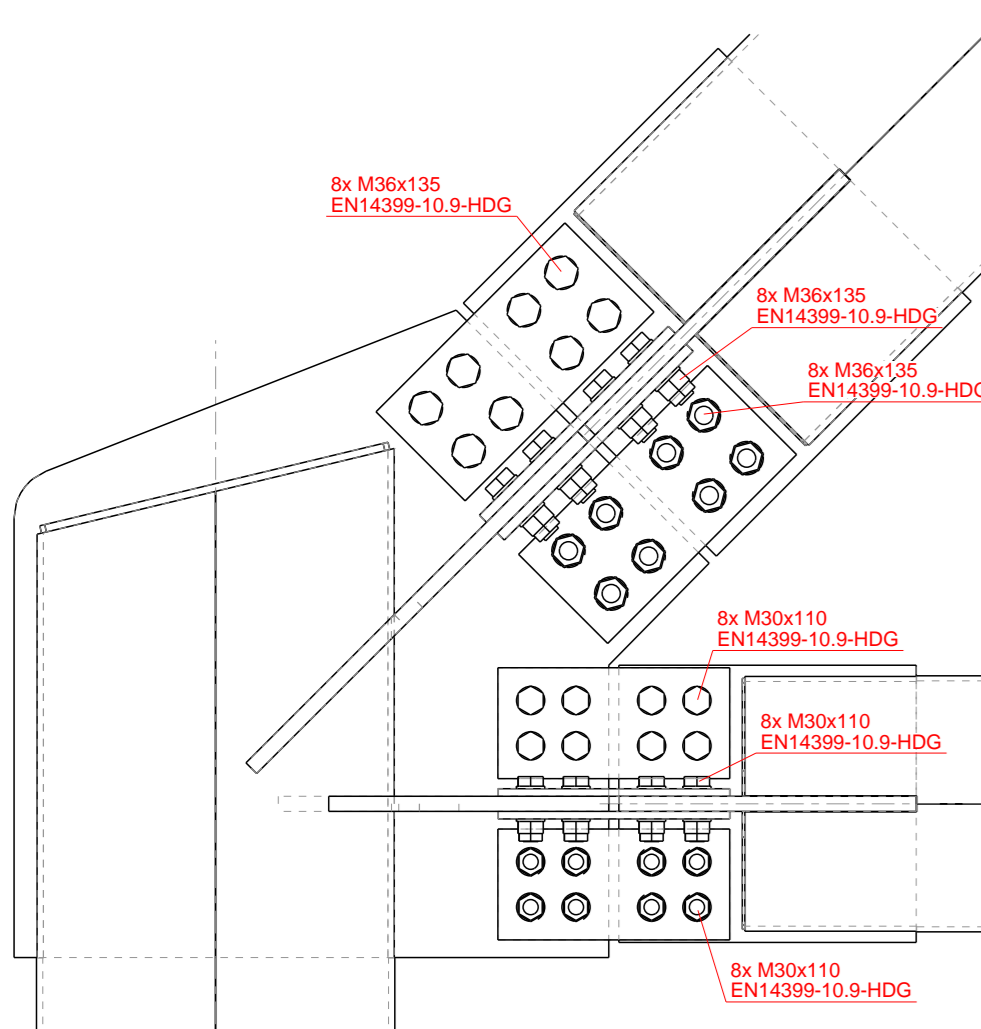
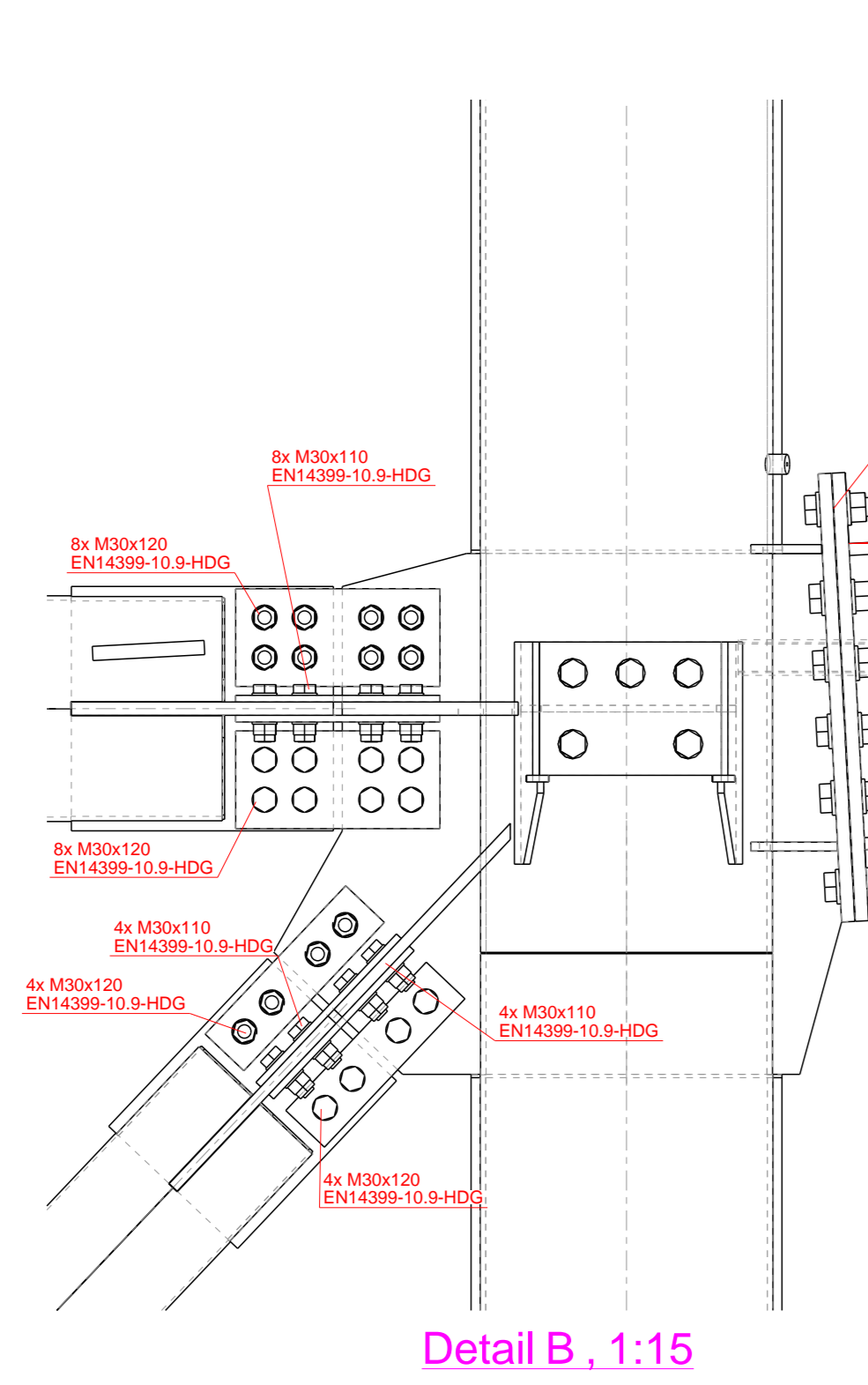


U1  
1:75

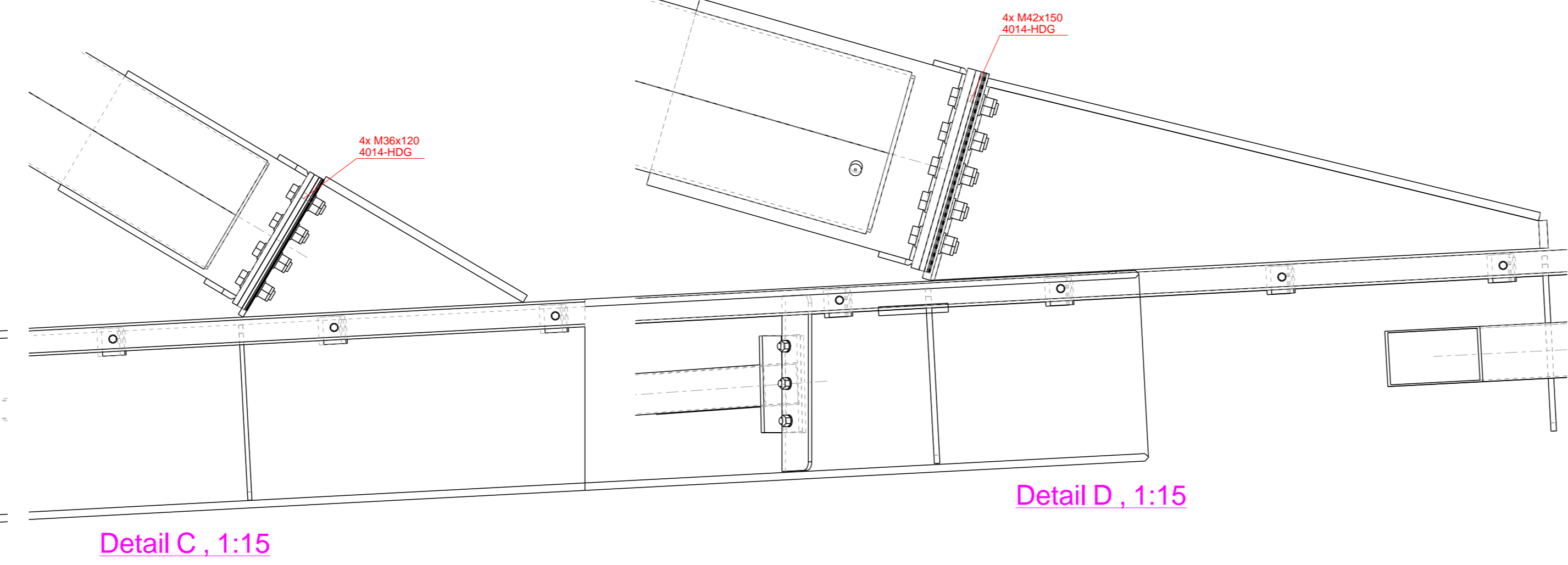
U2  
1:75



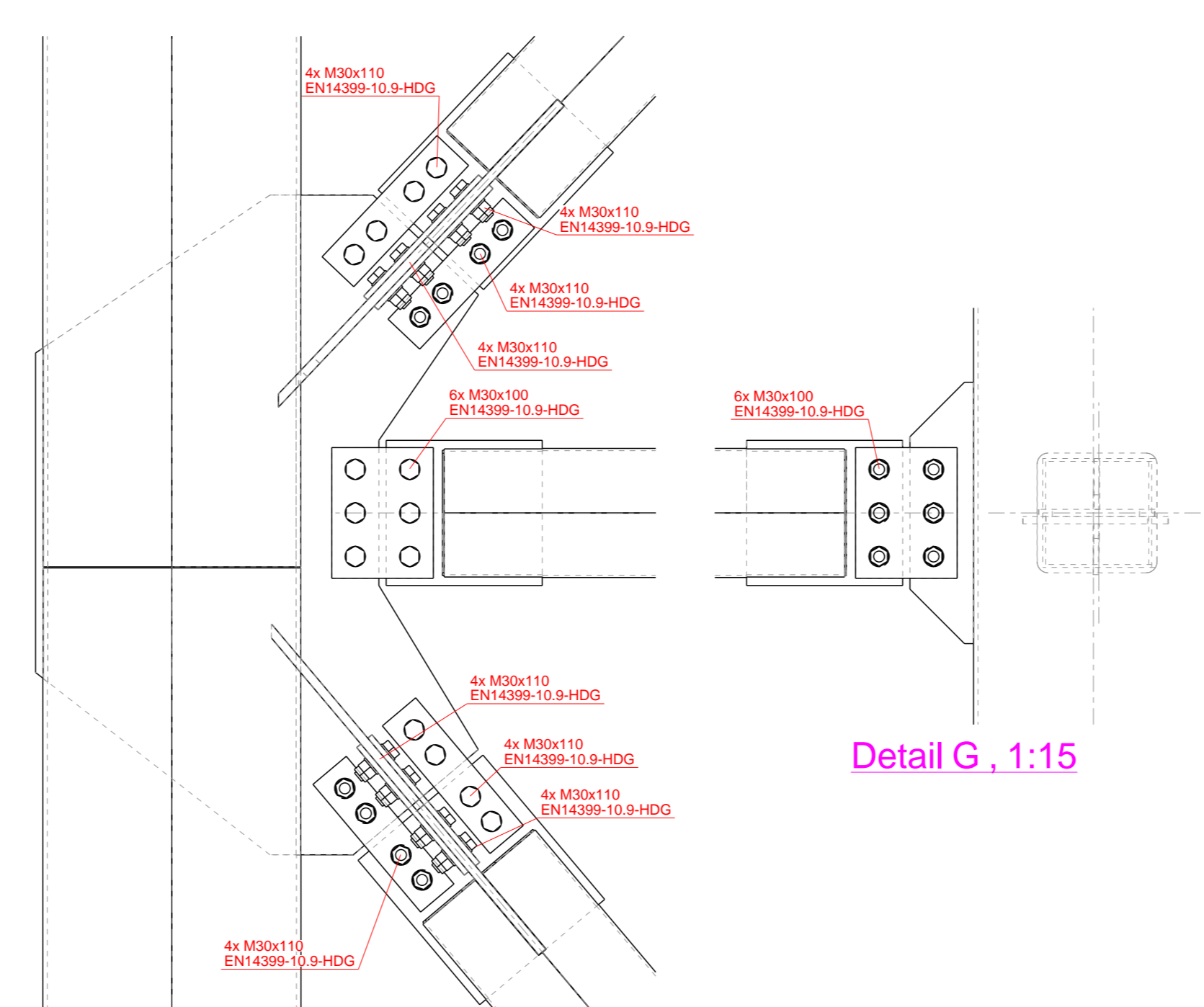
Detail A, 1:15



Detail B, 1:15



Detail C, 1:15

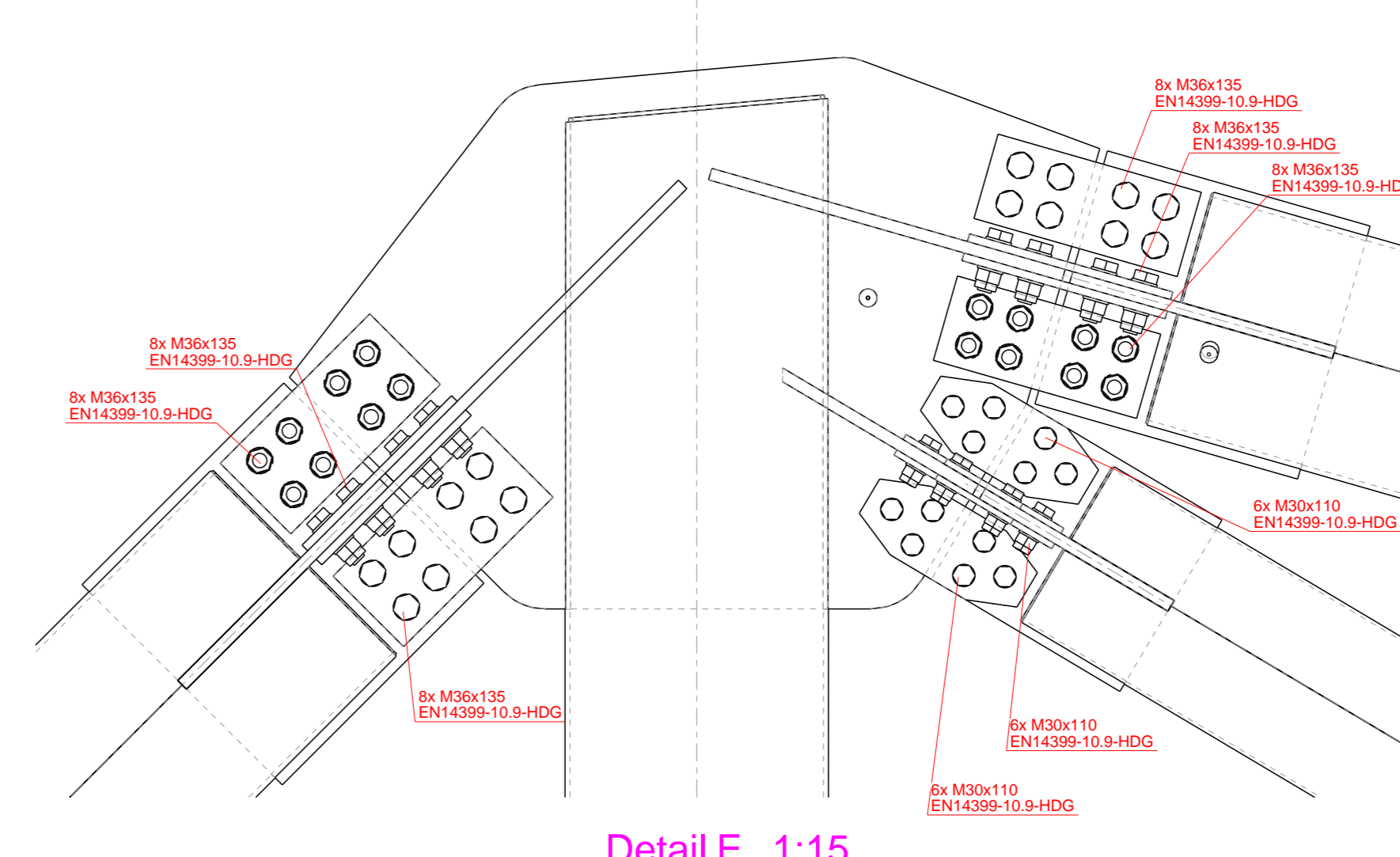


Detail D, 1:15



Detail E, 1:15

Detail G, 1:15



Detail F, 1:15

Voor verankering zie S-UO-151 'm 153  
Alle bouten voorzien van een 2e (lage) moer en voorzien locktite.



OSB-DOP-005-1-NL

NOTES		Corresponding detailcalculation:	
Performance class	: EXC3	Document	: 194022-D001
Functional tolerance class	: F1		
Preprocessing grade	: P2		
Material quality, unless noted otherwise:			
Roll-Sections	(NEH-EN 10025)	S355J2	
Plates 10-20mm	(NEH-EN 10025)	S355J2	
Welded Profiles	(NEH-EN 10025)	S355J2	D=100: S355J2
Hot Rolled H-Sections	(NEH-EN 10025)	S355J2	D=100: S355J2
Cold Formed Sections	(NEH-EN 10219)	D=100: S355J2	D=100: S355J2
Plates perpendicular embedded to the rolling direction due to tensile load	(NEH-EN 10164)	Tp=30mm: S355J2 Z35	
Bolt quality, unless noted otherwise:			
Anchors	(not dip galvanneal)	4.6 (bonded) / 8.8 (straight)	
Bolts	(not dip galvanneal)	8.8 (ISO 4014)	
Nuts	(not dip galvanneal)	Class 8 (ISO 4032)	
Washers	(not dip galvanneal)	(DIN126)	
Threaded ends	(not dip galvanneal)	4.6	
Surface treatment:			
		Treatment 1: (CS)	

revision	date	drawn	check	description	status
3	07-12-20	T.O.	AF	Bouten aangepast	Issued For Construction
2	23-10-20	T.O.	AF	Detail C niet 0 Changed	Issued For Construction
1	31-08-20	SO	AF	Lasteis changed	Issued For Construction
0	29-07-20	DP	AF	Issued For Construction	Issued For Construction

BAM Bouw en Techniek BV  
 project: Dakconstructie AFAS Stadion  
 title: Kraanspannen  
 order: 194022-400  
 drawing size: 1300x841  
 revision: 3  
 drawing number: S-UO-161  
 Oostingh Staalbouw BV  
 Postbus: 3020  
 2220 CA Katwijk  
 Nederland  
 +31 (0)71 40 97000  
 info@oostingh.nl

