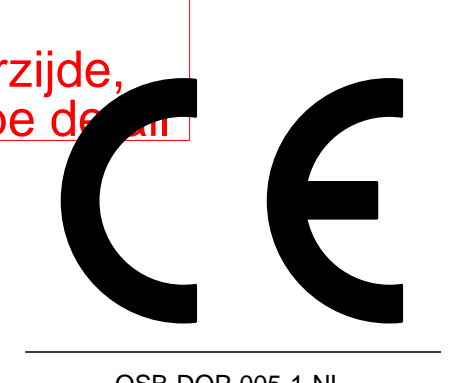
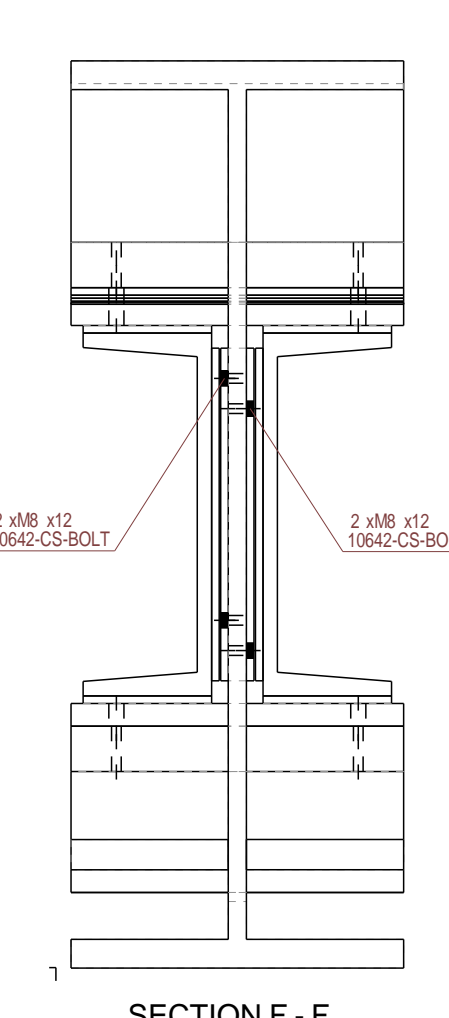
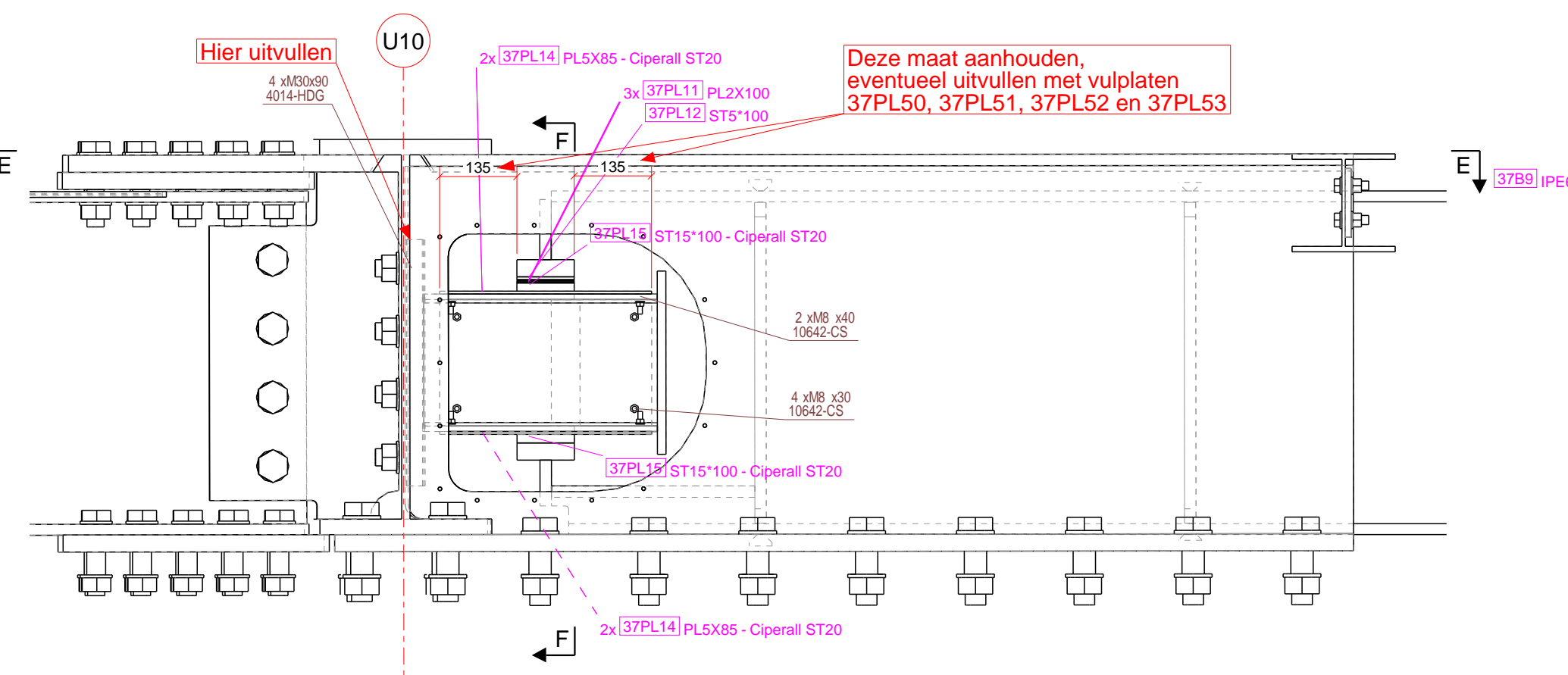
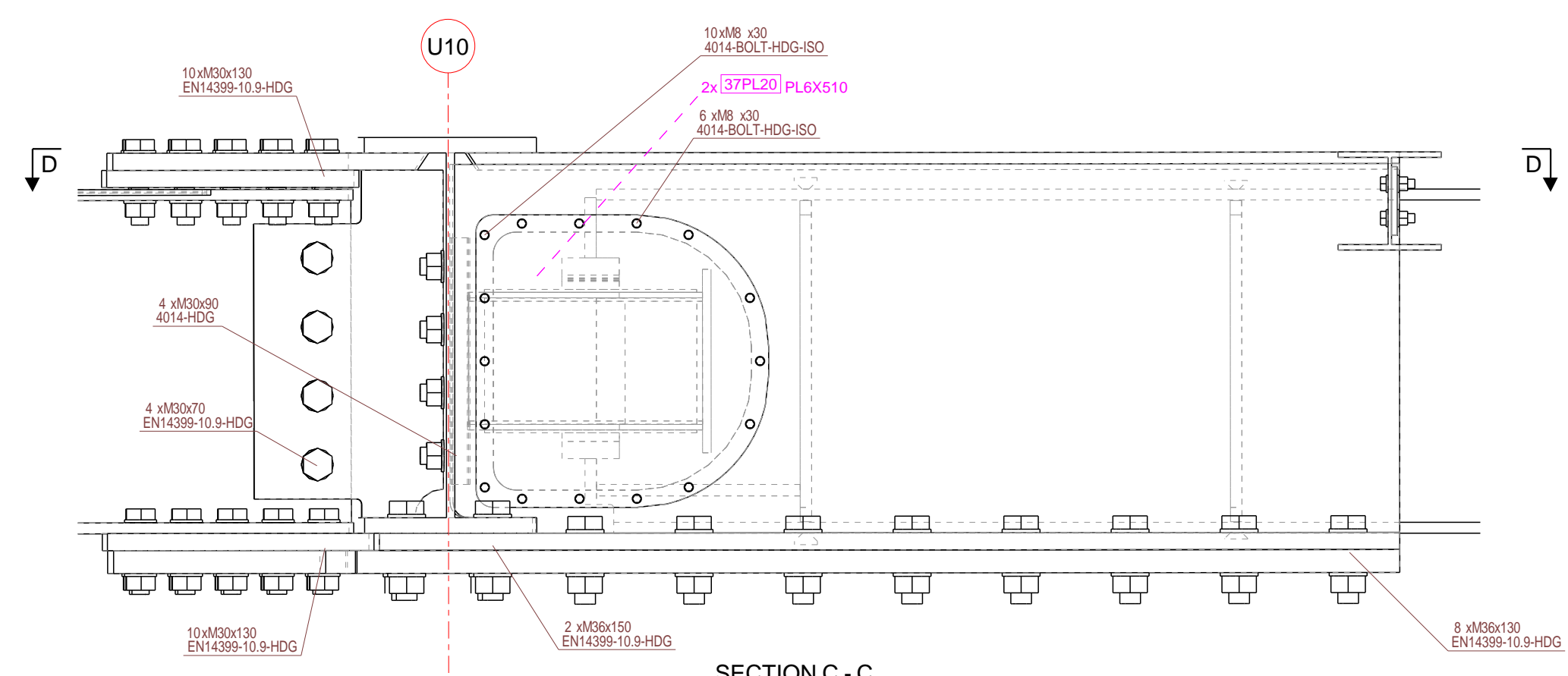
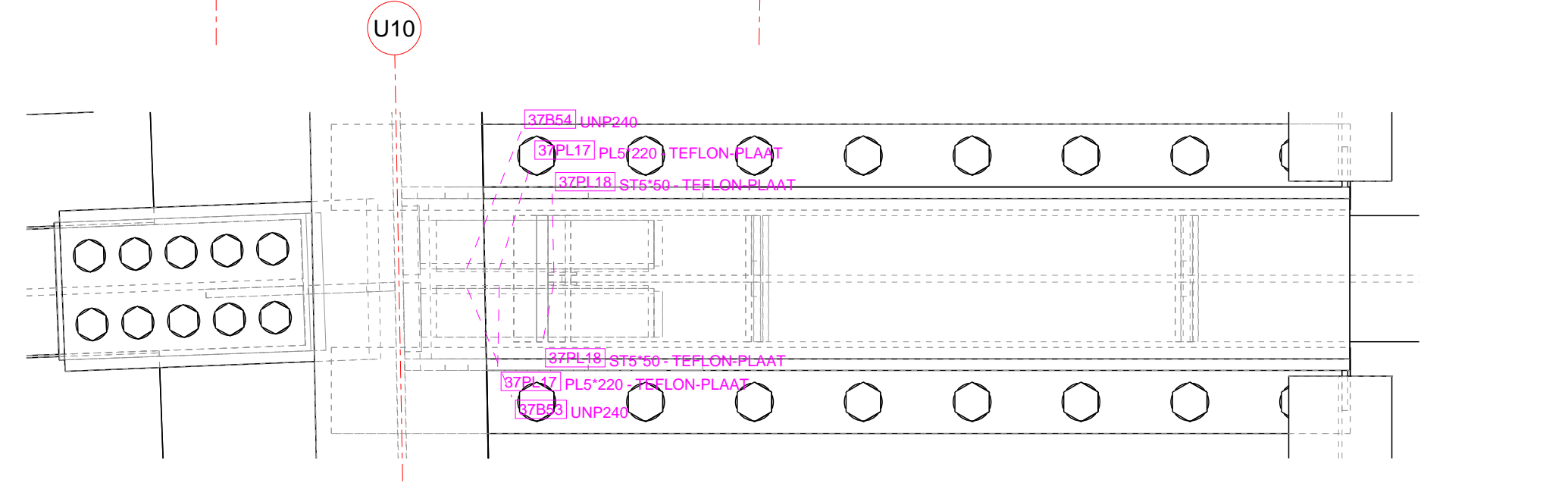
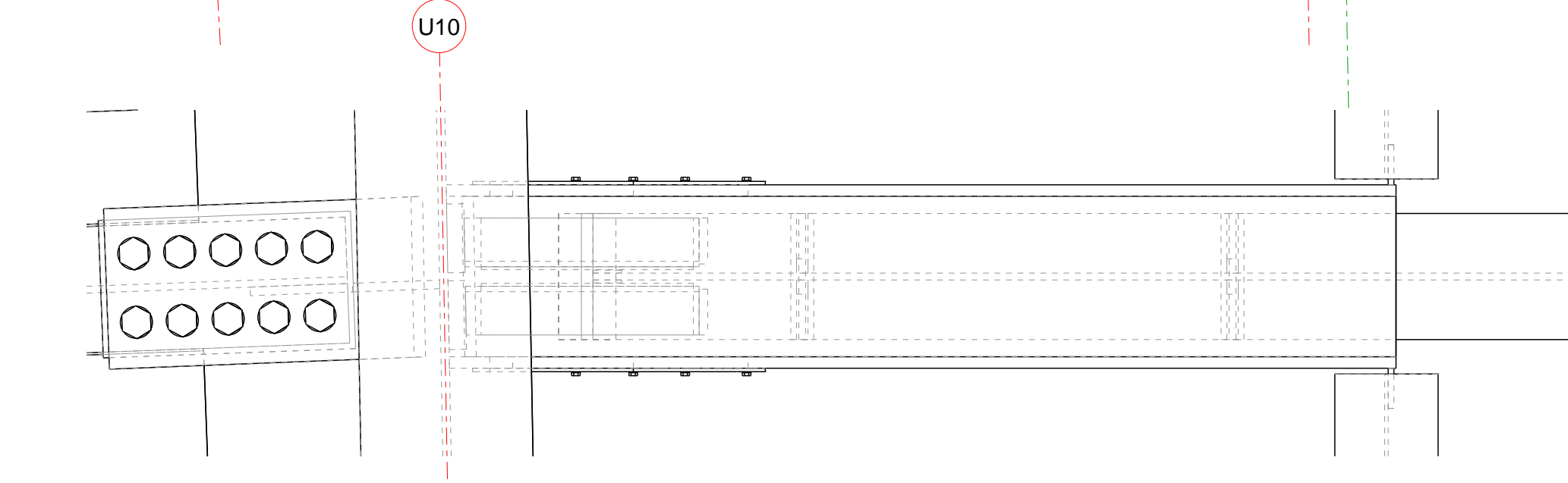


"Bouten M24x70 tav
"Bij lipaansluitingen boutkop aan liggerzijde,
meer aan lipzijde. Zie hiervoor principe diagram"



NOTES

Classifications:	Performance class : EXC3	Corresponding detail calculation:	Document : 194022_005
Functional tolerance class :	1		
Progression grade :	P2		
Material quality, unless noted otherwise:			
Roll-Sections	(NEN-EN 10025) : S355J2		
Plates T<=25mm	(NEN-EN 10025) : S355J2		
Welded Profiles	(NEN-EN 10025) : S355J2		
Hot Rolled Hollow Sections	(NEN-EN 10210) : D=100 : S355J2 D=100 : S355J2		
Cold Formed Sections	(NEN-EN 10219) : D=100 : S355J2 D=100 : S355J2		
Plates perpendicular oriented to the rolling direction due to transverse load	(NEN-EN 10164) : T<=30mm : S355J2-Z35		
Bolt quality, unless noted otherwise:			
Anchors	(niet dp. geverend)	4.6 (borend) / 8.8 (straight)	
Nuts	(niet dp. geverend)	8.8 (ISO 4032)	
Washers	(niet dp. geverend)	Class 8 (ISO 4032)	
Threaded ends	(niet dp. geverend)	Ø16/126	
Surface treatment:			
Treatment 1 :	(C5)		



revision	date	drawn	check	description	status
3	25-01-21	T.O.	AF	Opgeve vulplaten i.p.v. dilatatie toegevoegd	Issued for Construction
2	26-11-20	T.O.	AF	Probleem en bouten aangepast	Issued for Construction
1	20-11-20	T.O.	AF	Marken aangepast	Issued for Construction
0	29-10-20	DP	AF	Issued for Construction	Issued for Construction

BAM Bouw en Techniek BV
 project: **Dakconstructie AFAS Stadion** drawing size: **A0**
 title: **Dakvlak bouwdeel BCD** revision: **3**
 order: **Gordingen U9 t/m U12** drawing number: **194022-500**
 S-UO-255

Oostingh Staalbouw BV
 Postbus 3020
 2220 CA Katwijk
 Nederland
 +31 (0)71 40 97000
 info@oostingh.nl

