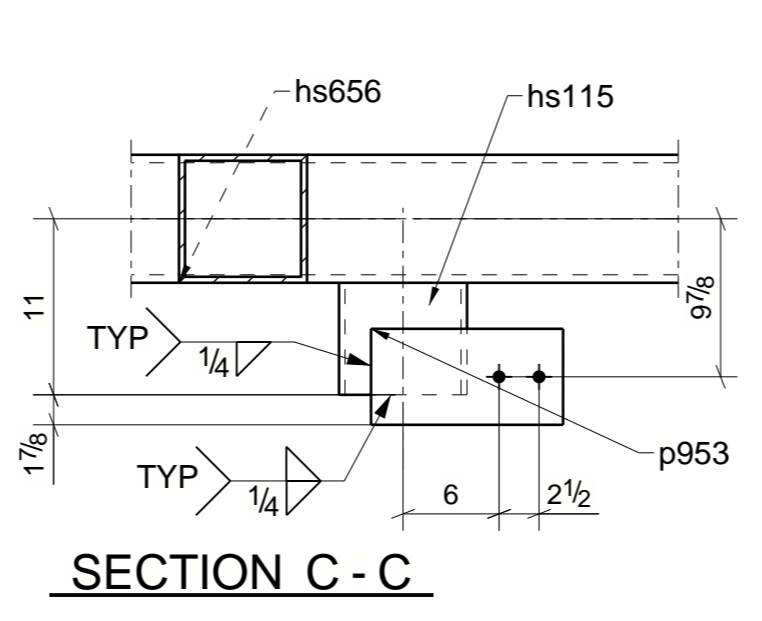
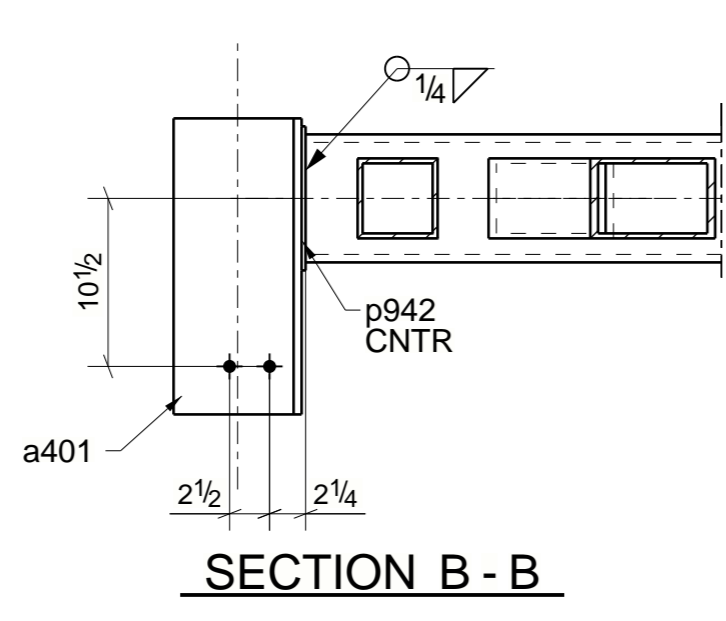
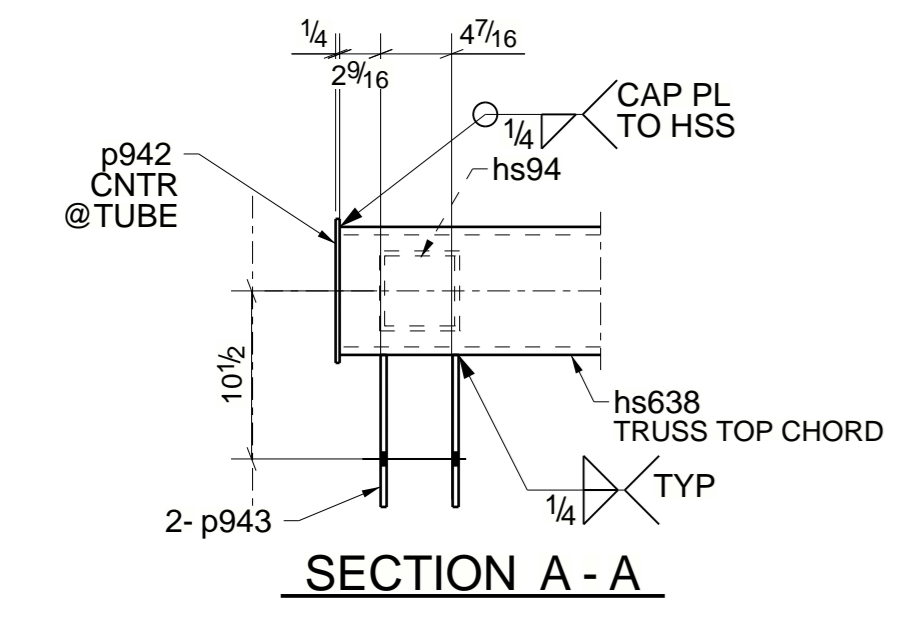
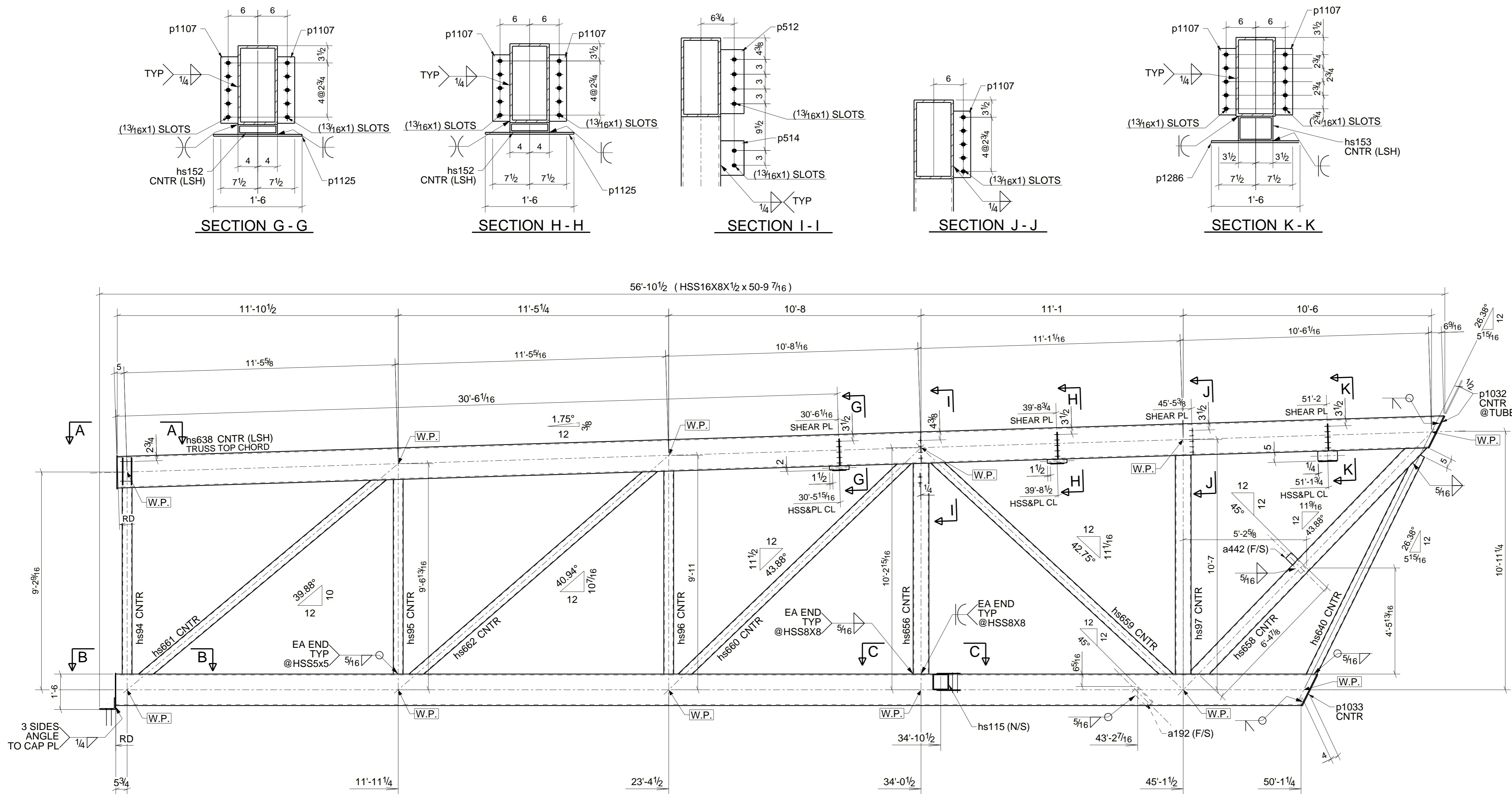


BILL OF MATERIAL

QTY	SHIPPING BILL		SHOP BILL						
	NO.	REJECTION MARK	NO.	SHAPE	MATERIAL GRADE	LENGTH	ASSY. MARK	REMARKS	WEIGHT
29	1	29TR101		TRUSS					
	1		1	HSS16X8X1/2	A500C	50-9 7/16	29TR101	Rustbond PS	3612
	1		1	L4X4X1/2	A36	0-11	a192		12
	1		1	L8X8X1/2	A36	1-6 1/2	a401		36
	1		1	L4X4X1/2	A36	0-11	a442		12
	1		1	HSS5X5X5/16	A500C	7-10 5/8	hs94		141
	1		1	HSS5X5X5/16	A500C	8-2 7/8	hs95		147
	1		1	HSS5X5X5/16	A500C	8-7 1/16	hs96		154
	1		1	HSS8X8X3/8	A500C	9-3 1/8	hs97		328
	1		1	HSS8X8X3/8	A500C	0-7	hs115		21
	2		2	HSS8X25X1/6	A500C	0-10	hs152		30
	1		1	HSS7X5X5/16	A500C	0-10	hs153		18
	1		1	HSS16X8X1/2	A500C	56-1 7/8	hs638		3994
	1		1	HSS5X5X5/16	A500C	10-5 3/8	hs640		187
	1		1	HSS8X8X3/8	A500C	8-11 1/16	hs656		316
	1		1	HSS8X8X3/8	A500C	13-9 13/16	hs658		489
	1		1	HSS5X5X5/16	A500C	13-7 3/16	hs659		243
	1		1	HSS5X5X5/16	A500C	13-3 3/8	hs660		238
	1		1	HSS5X5X5/16	A500C	13-3 7/8	hs661		238
	1		1	HSS5X5X5/16	A500C	13-6 11/16	hs662		243
	1		1	PL3/8"X4 3/4"	A36	1-1	p512		7
	1		1	PL3/8"X4 3/4"	A36	0-7	p514		4
	2		2	PL1/4"X8"	A36	1-6	p942		22
	2		2	PL3/8"X9 1/2"	A36	1-2	p943		28
	2		2	PL3/8"X8"	A36	1-0	p953		15
	1		1	PL1/2"X8"	A36	1-6 1/8	p1032		21
	1		1	PL1/2"X8"	A36	1-5 7/8	p1033		20
	7		7	PL3/8"X3 1/2"	A36	1-1 1/2	p1107		35
	2		2	PL3/8"X7"	A572-50	1-6	p1125	NO PAINT	27
	1		1	PL3/8"X9 1/2"	A572-50	1-6	p1286	NO PAINT	18
	2		2	3/40 A325N_TC BOLT		0-2		Site	
	2		2	3/40 A325N BOLT		0-10		Site	
	2		2	3/40 A325N BOLT		0-6		Site	
TOTAL WEIGHT THIS DRAWING									10655



ONE - TRUSS - 29TR101

E-SHEET REFERENCE	
MATERIAL (UNLESS NOTED)	
A36	
SURFACE PREPARATION	
SSPC-SP3	
SHOP PAINT	
Rustbond PS	
SHOP CONNECTIONS/ ELECTRODES	
WELDS/E70XX	
FIELD CONNECTIONS (U.N.O.)	HOLES (U.N.O.)
3/4 A325N_TC	13/16"