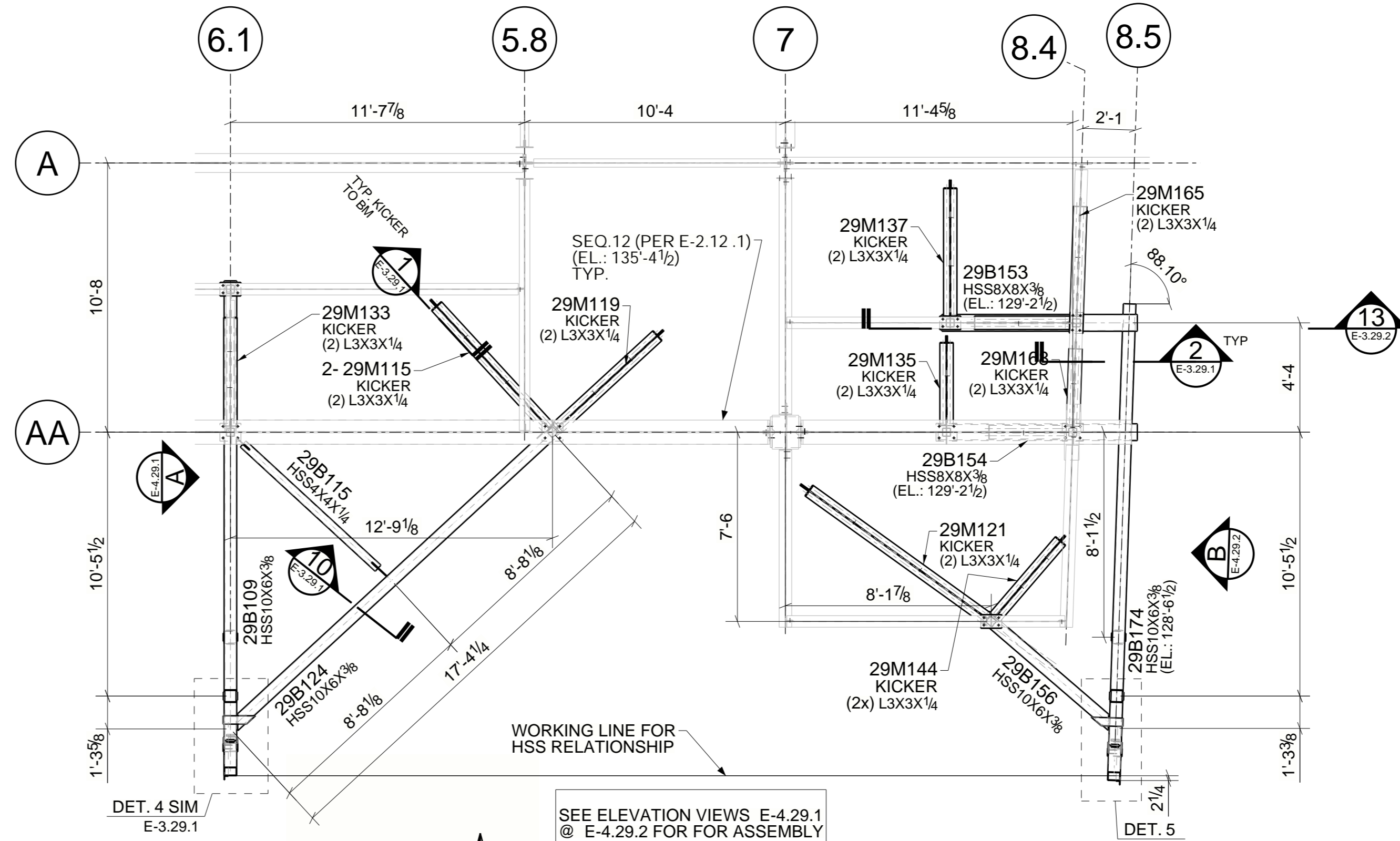


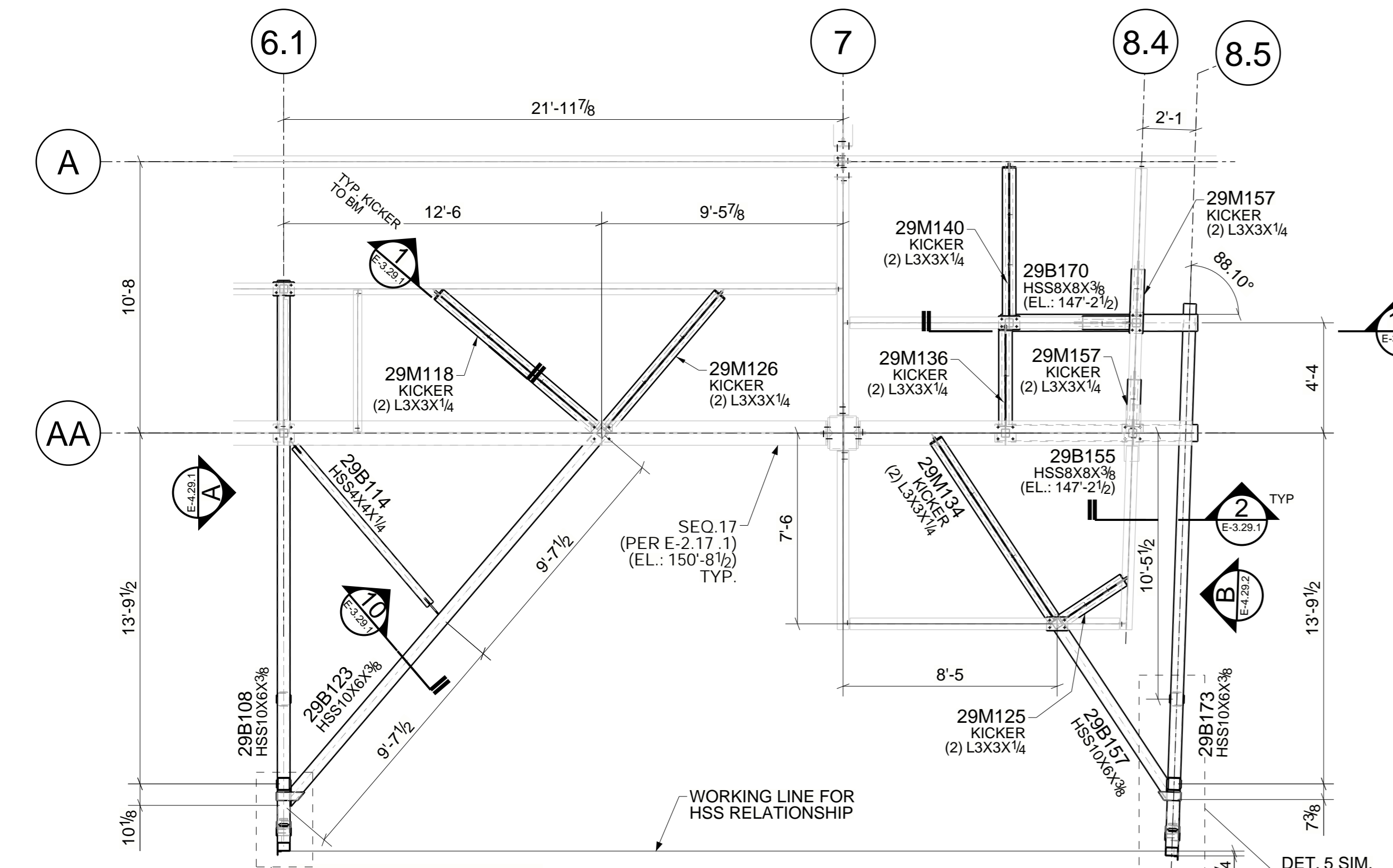
PARTIAL PLAN - LEVEL 02
 SEQUENCE 29 - SHADOW BOX FRAME (REF: S313)
 T.O.S. EL.: 114'-6" (U.N.O.)

TRUE PLAN



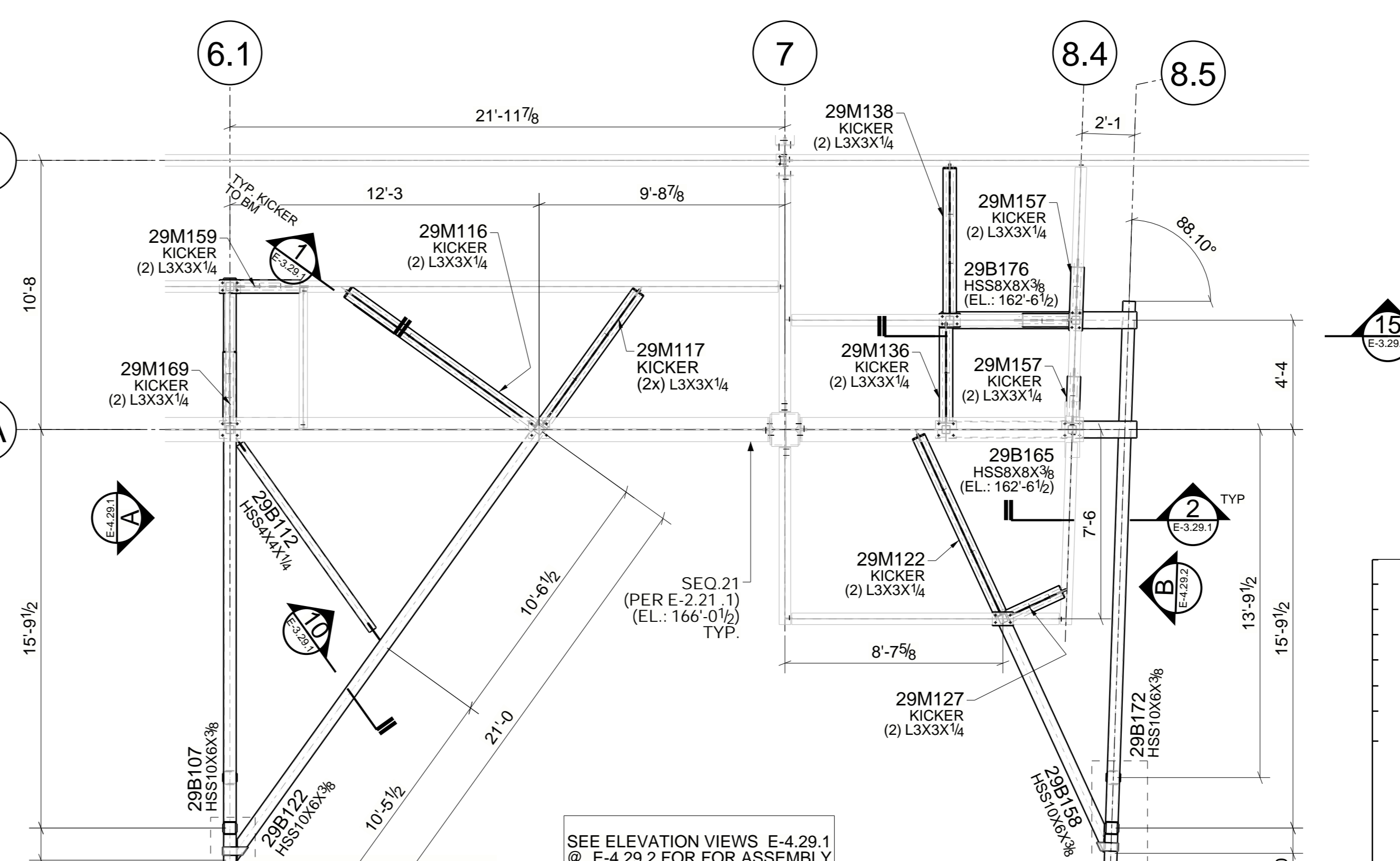
PARTIAL PLAN - LEVEL 03
 SEQUENCE 29 - SHADOW BOX FRAME (REF: S313)
 T.O.S. EL.: 128'-6 1/2" (U.N.O.)

TRUE PLAN



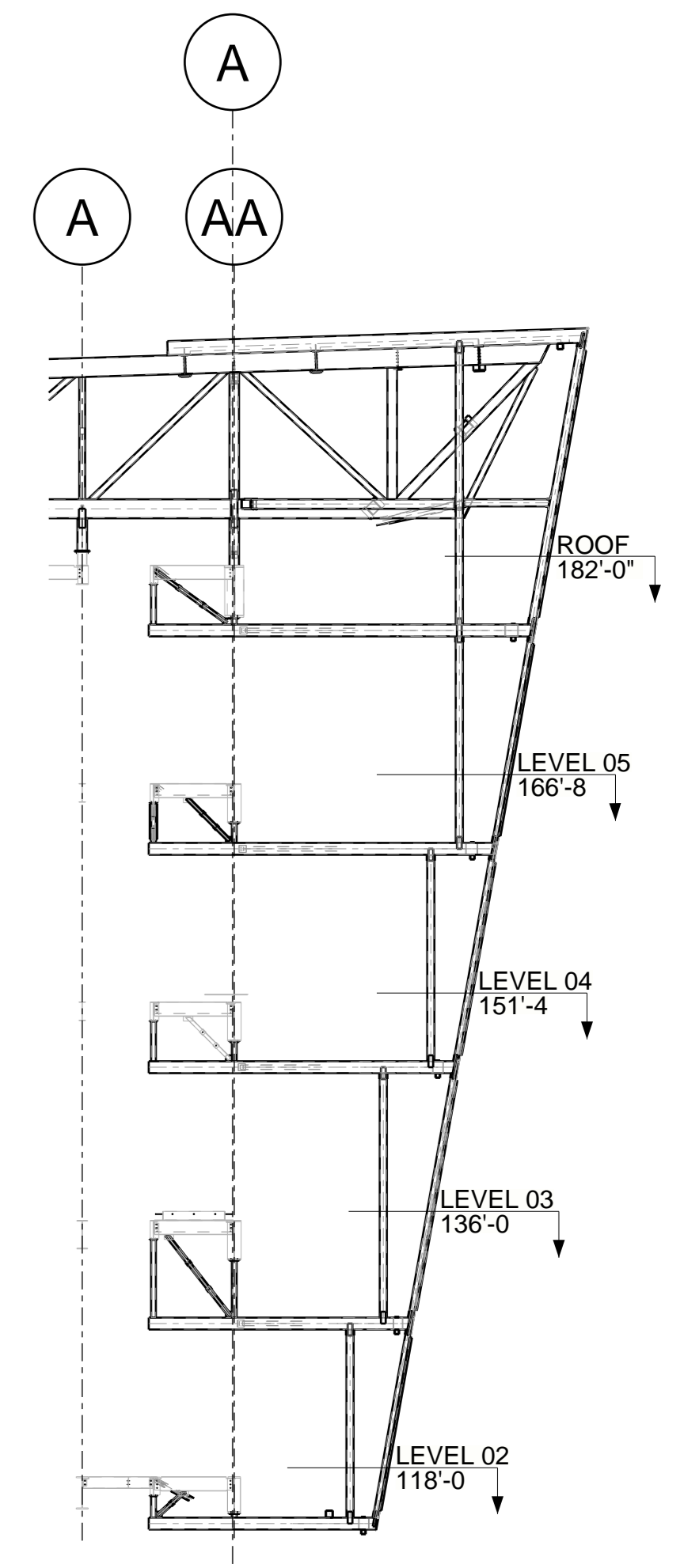
PARTIAL PLAN - LEVEL 04
 SEQUENCE 29 - SHADOW BOX FRAME (REF: S313)
 T.O.S. EL.: 146'-6 1/2" (U.N.O.)

TRUE PLAN



PARTIAL PLAN - LEVEL 05
 SEQUENCE 29 - SHADOW BOX FRAME (REF: S313)
 T.O.S. EL.: 161'-10 1/2" (U.N.O.)

TRUE PLAN



WEST FRAME ELEVATION