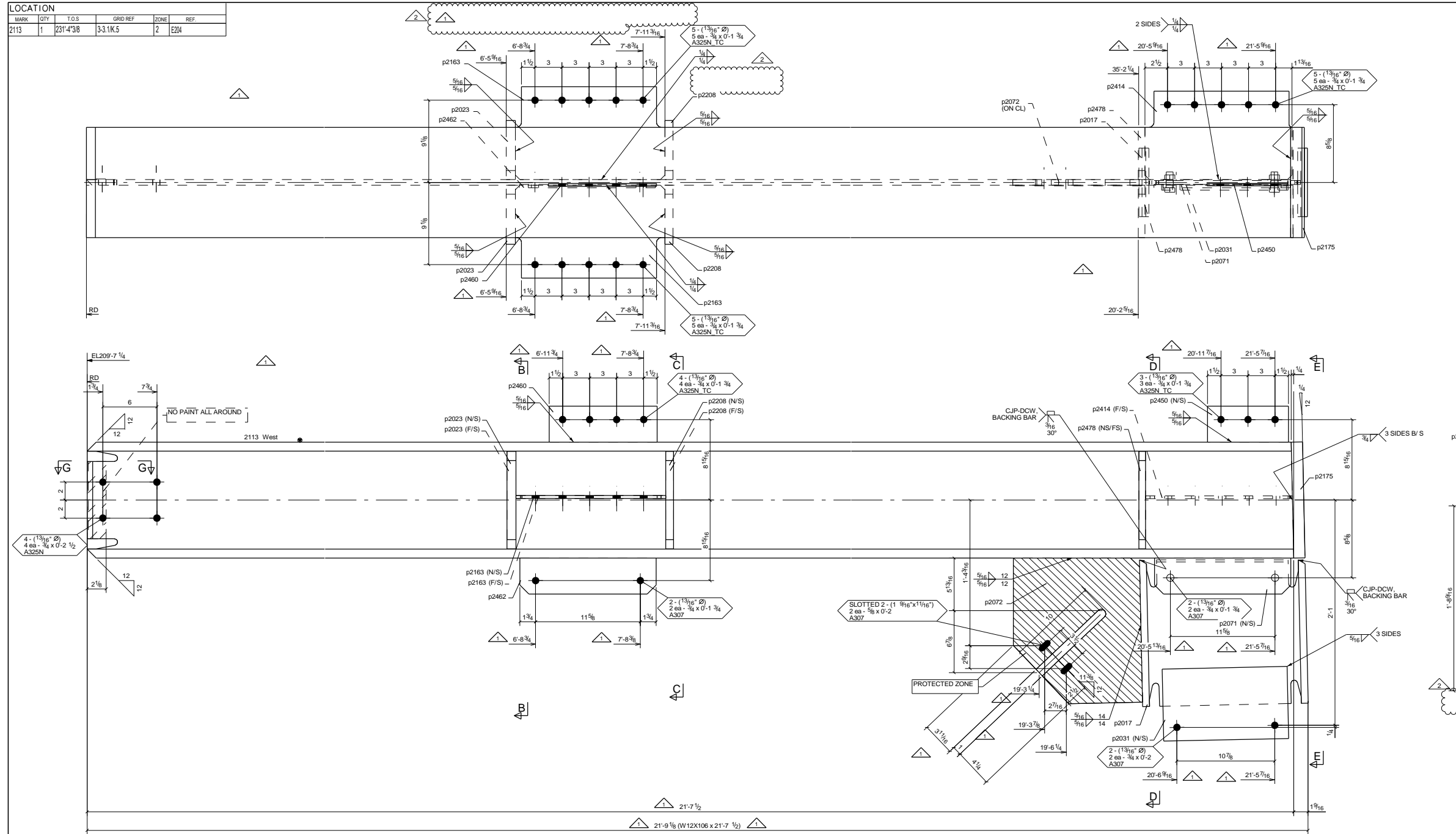
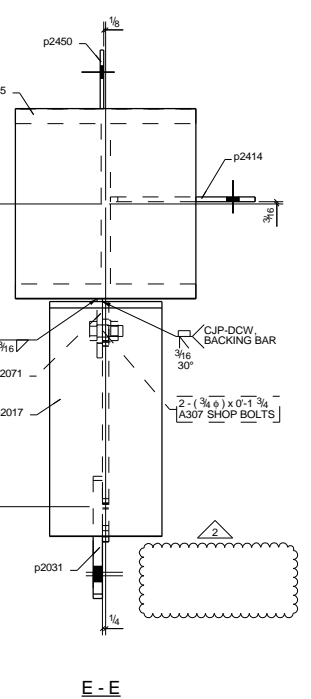
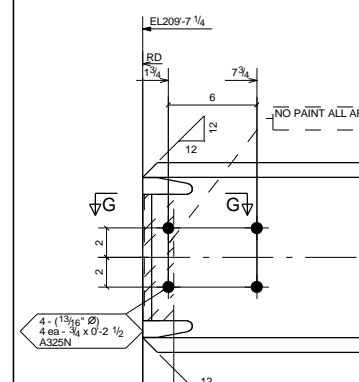


LOCATION					
MARK	QTY	T.O.S	GRID REF	ZONE	REF
2113	1	231-4'3/8"	3-3.1K.5	2	E204

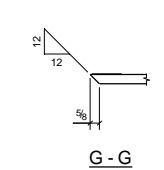
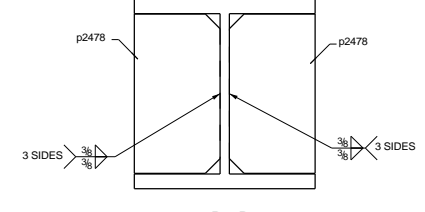
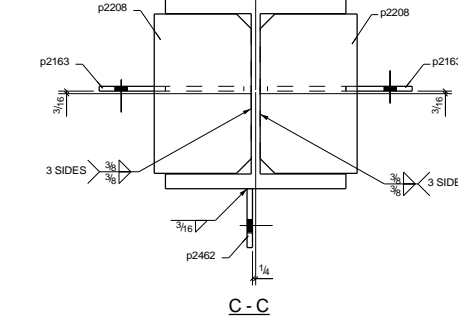
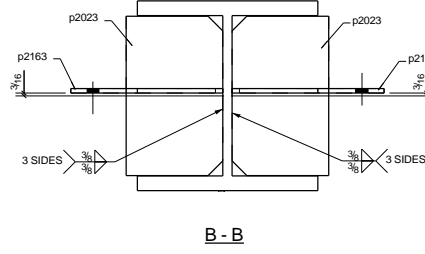


BILL OF MATERIAL								
ABM MARK	SHIPPING MARK	ASSY MARK	NO. REQ'D	DESCRIPTION	LENGTH	GRADE	WEIGHT	REMARKS
2ABM120			1	W12X106	21'-7 1/2"	A992	2297	BC1E
			1	W18X65	1'-4 5/16"	A992	84	BC1E
			2	PL 1/2 X 9'16"	0'-10 13/16"	A572-GR 50	40	CS2E
			1	PL 5/8 X 8"	1'-1 7/8"	A572-GR 50	20	CS2E
			1	PL 3/8 X 4"	1'-3 1/8"	A36	6	CS2E
			1	PL 5/8 X 14 3/16"	1'-4 5/16"	A572-GR 50	35	BC1E
			2	PL 5/16 X 10 5/16"	1'-4 5/8"	A36	29	CS2E
			1	PL 1 1/4 X 12 1/4"	1'-0 7/8"	A572-GR 50	56	CS2E
			2	PL 7/8 X 6 9/16"	0'-10 13/16"	A572-GR 50	35	CS2E
			1	PL 5/16 X 9 13/16"	1'-4 5/16"	A36	14	CS2E
			1	PL 1/4 X 4"	0'-9"	A36	3	CS2E
			1	PL 5/16 X 4"	1'-0"	A36	4	CS2E
			1	PL 3/8 X 4"	1'-3 1/8"	A36	6	CS2E
			2	PL 3/4 X 5 13/16"	0'-10 13/16"	A572-GR 50	26	CS2E
							TOTAL =	2655

BOLT SUMMARY - QTY'S ARE FOR ONE ASSEMBLY ONLY							
ASSEMBLY	NO. REQ'D	DIA.	LENGTH	WORKSHOP SITE	BOLT GRADE	REMARKS	
2113	2	3/4"	1 3/4"	Workshop	A307PLAIN/HEX		
2113	4	3/4"	2 1/2"	Site	A325PLAIN/HEAVY HEX	ERECTION BOLTS	
2113	2	5/8"	2"	Site	A307PLAIN/HEX		



Weld	A	B	C	D
1/2"	1/2"	1/2"	1/2"	1/2"
3/8"	3/8"	3/8"	3/8"	3/8"
1/4"	1/4"	1/4"	1/4"	1/4"
1/8"	1/8"	1/8"	1/8"	1/8"
5/16"	5/16"	5/16"	5/16"	5/16"
3/16"	3/16"	3/16"	3/16"	3/16"
1/16"	1/16"	1/16"	1/16"	1/16"
1/8"	1/8"	1/8"	1/8"	1/8"
1/4"	1/4"	1/4"	1/4"	1/4"
3/8"	3/8"	3/8"	3/8"	3/8"
1/2"	1/2"	1/2"	1/2"	1/2"
3/4"	3/4"	3/4"	3/4"	3/4"
1"	1"	1"	1"	1"
1 1/8"	1 1/8"	1 1/8"	1 1/8"	1 1/8"
1 1/4"	1 1/4"	1 1/4"	1 1/4"	1 1/4"
1 1/2"	1 1/2"	1 1/2"	1 1/2"	1 1/2"
1 3/4"	1 3/4"	1 3/4"	1 3/4"	1 3/4"
2"	2"	2"	2"	2"
2 1/2"	2 1/2"	2 1/2"	2 1/2"	2 1/2"
3"	3"	3"	3"	3"
3 1/2"	3 1/2"	3 1/2"	3 1/2"	3 1/2"
4"	4"	4"	4"	4"



1 COLUMN MARK: 2113

Profile	d	b	t	w	k
W12X106	12 7/8"	12 1/4"	1"	5/8"	1 7/8"

NOTE: WELD DENOTED AS "DEMAND CRITICAL WELD" (DCW), SHALL BE MADE WITH FILLER METAL CONFORMING TO THE REQUIREMENTS OF AISC 341-10, SECTION A3.4(b)

NOTE: BEAM REGIONS DESIGNATED AS "PROTECTED ZONE" SHALL BE DISTINCTLY MARKED WITH CONTRASTING PAINT OR OTHER ACCEPTABLE MEANS. WELDED STUDS, DRILLED, BORED OR BURNED-IN HOLES FOR BOLTS, DRIVEN PINS OR OTHER ATTACHMENTS USED FOR CONSTRUCTION ARE PROHIBITED WITHIN THE "PROTECTED ZONE". ANY DISCONTINUITIES CREATED BY FABRICATION OR ERECTION OPERATIONS WITHIN THE "PROTECTED ZONE" SHALL BE REPAIRED AS REQUIRED BY DCI ENGINEERS.

PAINT TYPE	
NO PAINT	SP-3
Holes noted "SLIP CRITICAL" SHALL HAVE NO PAINT WITHIN 5" OF THOSE HOLES	

11/09/2021	RE-RELEASED FOR FABRICATION
10/27/2021	RE-RELEASED FOR FABRICATION
09/30/2021	RELEASED FOR FABRICATION
06/04/2021	ISSUED FOR APPROVAL
NO BACK CHARGES WILL BE ACCEPTED WITHOUT PRIOR AUTHORIZATION IN WRITING	
NOTE:	
MATERIAL:	SSPC
BOLT:	WELD:
WELD:	ELECTRODE:
HOLE SIZE:	
JOB NAME & LOCATION:	ARCH: WEBER THOMPSON
Avenue Bellevue	ENGR: DCI
10300 NE 8th Bellevue, WA98004	CONTR: Apex Steel Inc
REF: E204	JOB NO. 2085
DRAWN BY: HS 04/09/2021	CHECKED BY: MWK 04/09/2021
SHEET TITLE	DWG. NO. 2113
COLUMN	