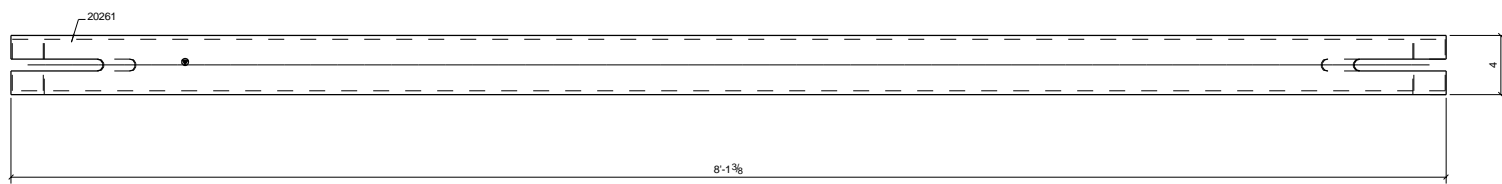
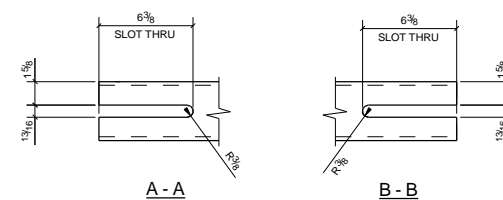
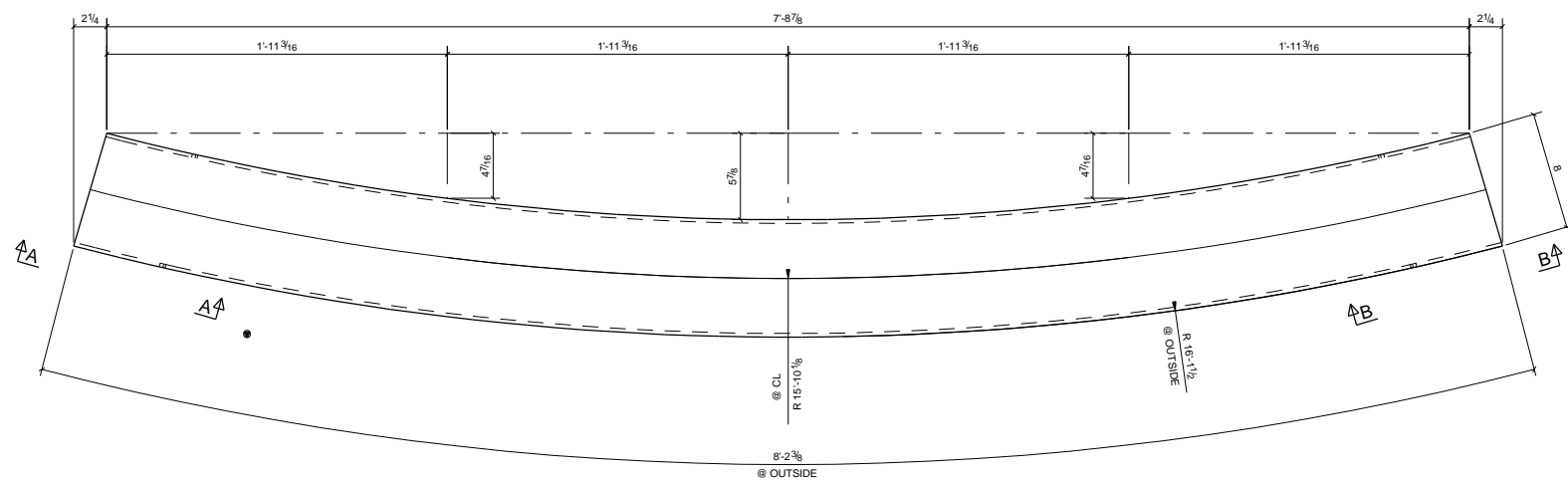
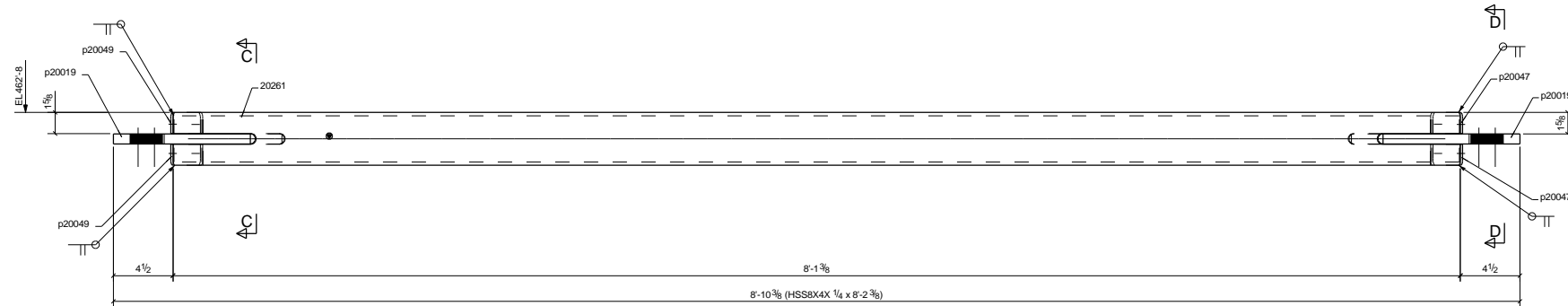
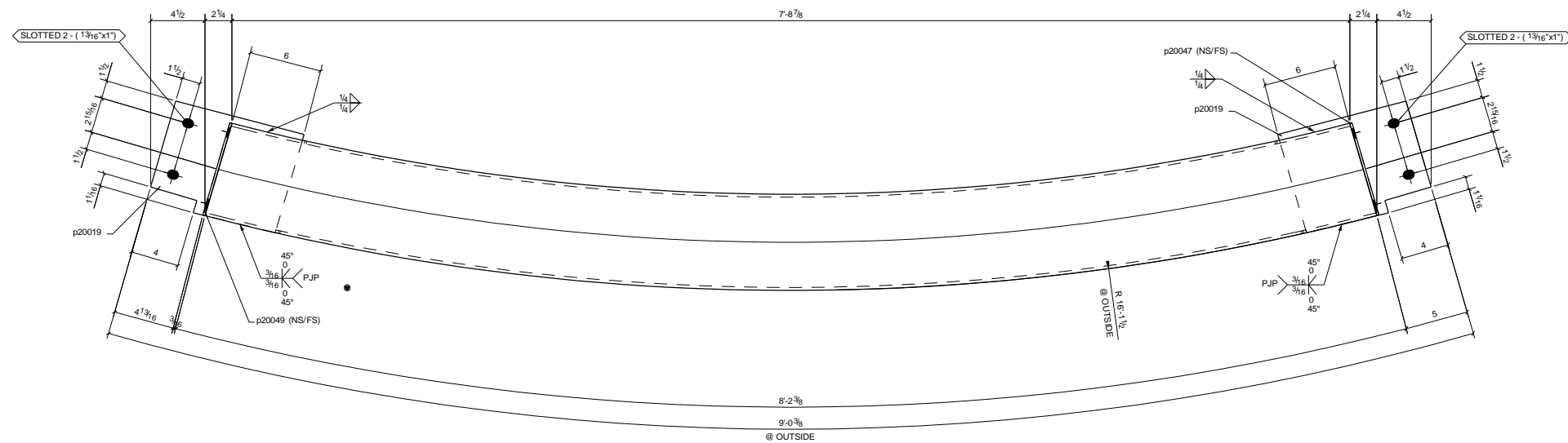


LOCATION					
MARK	QTY	T.O.S	GRID REF	ZONE	REF
20261	1	462'-8"	4.3-4.5/G.6-G.4	20	E2003



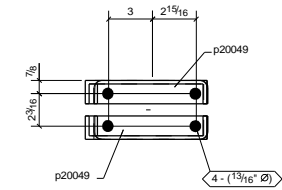
1 BEAM MARK: 20261

**BILL OF MATERIAL**

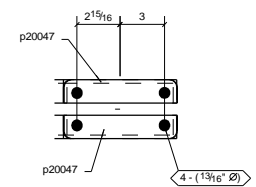
ABM MARK	SHIPPING MARK	ASSY MARK	NO. REQ'D	DESCRIPTION	LENGTH	GRADE	WEIGHT	REMARKS
20ABM217	20261		1	HSS8X4X1/4	8'-2 3/8"	A500-GR B	155	ROLLED BC2E
		20261	1	HSS8X4X1/4	8'-2 3/8"	A500-GR B	155	ROLLED BC2E
		20261	2	PL3/4"x8.75"	0'-11"	A572-GR 50	38	BC2E
		p20047	2	PL3/16"x1.5/8"	0'-8"	A36	1	CS2E
		p20049	2	PL3/16"x1.5/8"	0'-8"	A36	1	CS2E
TOTAL =							196	

**BOLT SUMMARY - QTY'S ARE FOR ONE ASSEMBLY ONLY**

ASSEMBLY NO. REQ'D	DIA.	LENGTH	WORKSHOP SITE	BOLT GRADE	REMARKS
20261	4	3/4"	2 1/2"	Site	A307PLAINHEAVY HEX



C - C  
OTHER ELEMENTS NOT SHOW FOR CLARITY



D - D  
OTHER ELEMENTS NOT SHOW FOR CLARITY

07/27/2021 ISSUED FOR APPROVAL  
 NO BACK CHARGES WILL BE ACCEPTED WITHOUT PRIOR AUTHORIZATION IN WRITING  
 NOTE:

MATERIAL: SSPC  
 BOLT: WELD:  
 HOLE SIZE: ELECTRODE:

Steel Detailing  
 IRON  
 TEL: (604) 428-4651  
 FAX: (604) 429-1393  
 www.anatomiciron.com

JOB NAME & LOCATION: Avenue Bellevue, 10300 NE 8th Bellevue, WA98004  
 ARCH: WEBER THOMPSON  
 ENGR: DCI  
 CONTR: Apex Steel Inc

REF: E200  
 DRAWN BY: HS 07/27/2021  
 CHECKED BY: MWK 07/27/2021  
 SHEET TITLE: BEAM

JOB NO: 2085  
 DWG NO: 20261

HOLES NOTED "SLIP CRITICAL" SHALL HAVE NO PAINT WITHIN 5" OF THOSE HOLES

PAINT TYPE	
SP-3	

