

ALL CONDUITS DIMENSIONS ARE TO CENTRE OF BACKBOXES
 FOR JOINT TYPES SEE DRAWING 03-GRA-0058-FPM-RC-XX-DR-X-0600
 # INDICATES LOCATIONS OF INSPECTION SLOTS, REFER TO DRAWING 03-GRA-0058-FPM-RC-XX-DR-X-0603

LOOSE FITTINGS: PER UNIT

NOTES:

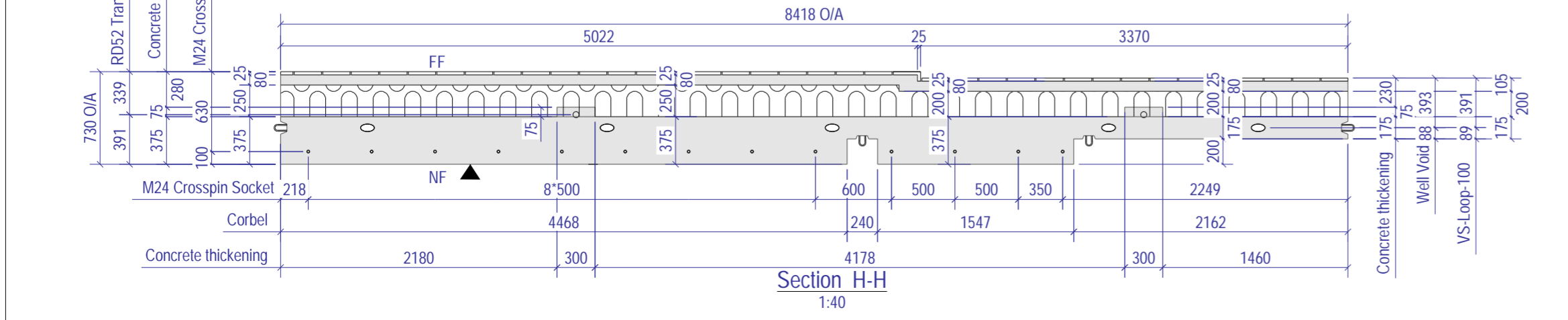
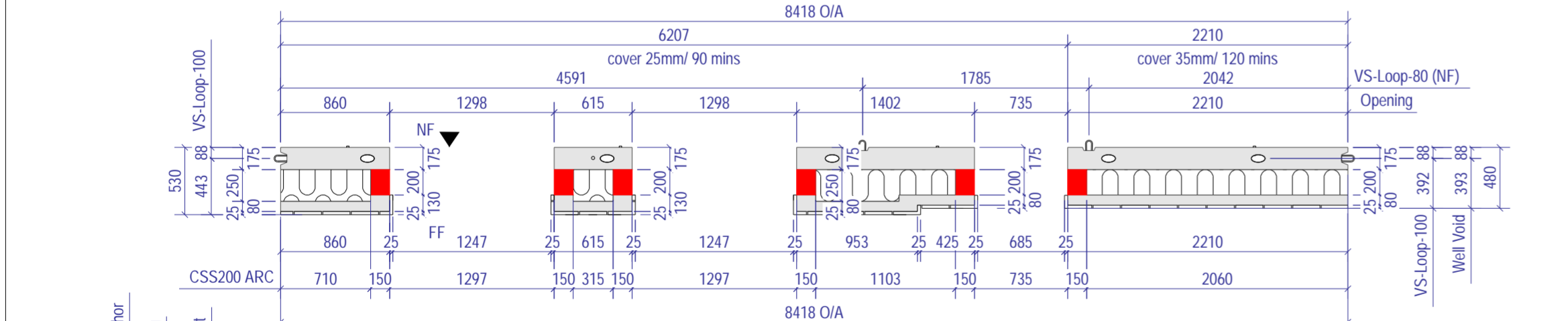
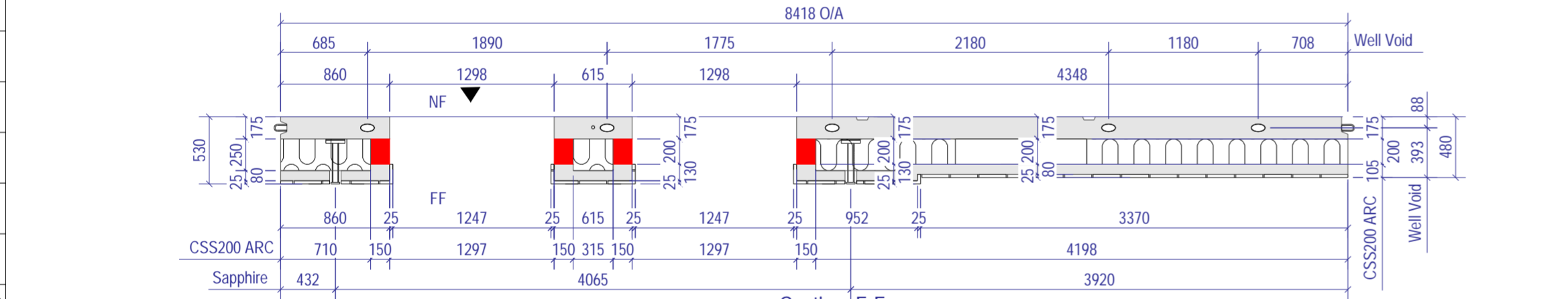
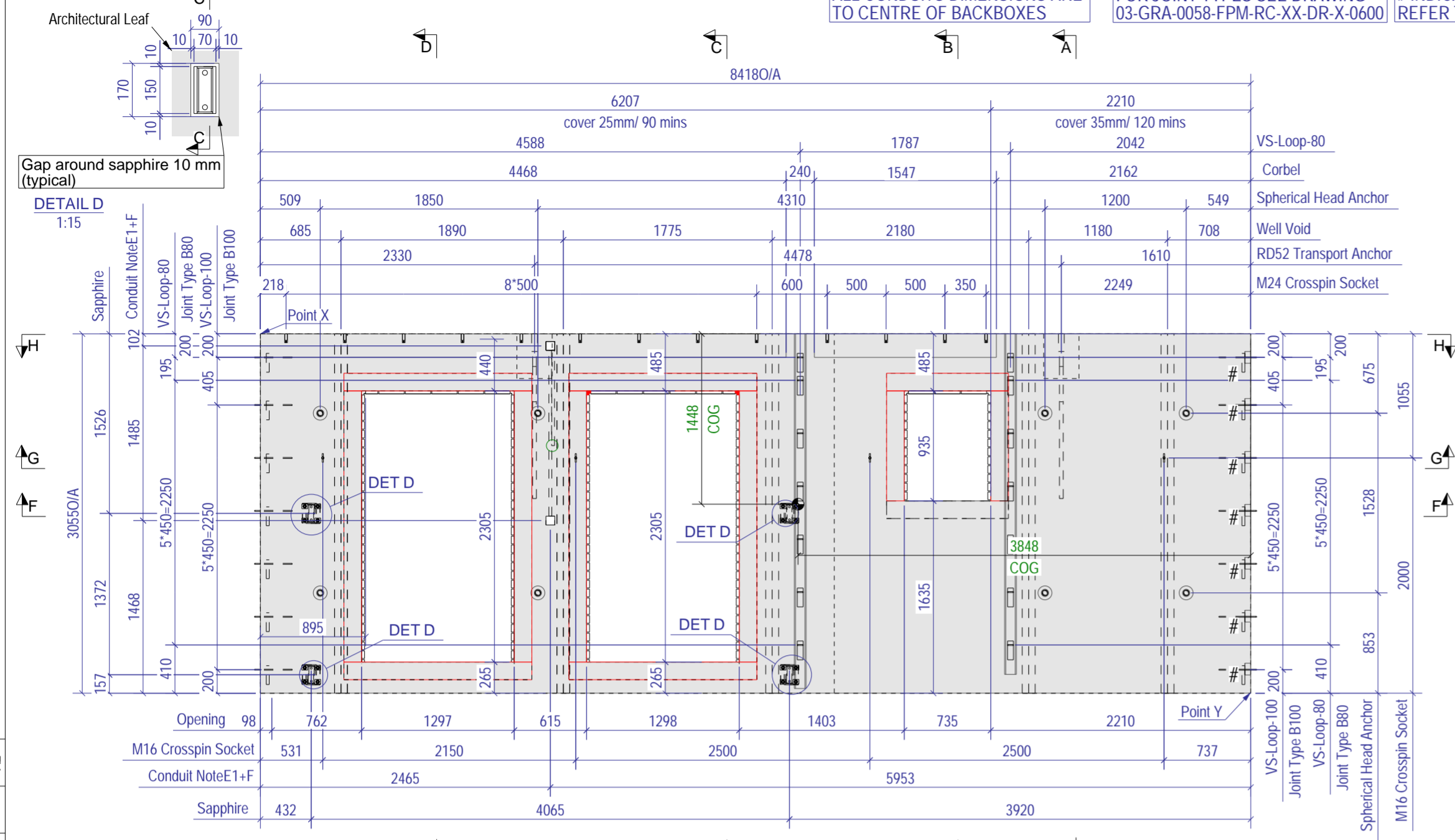
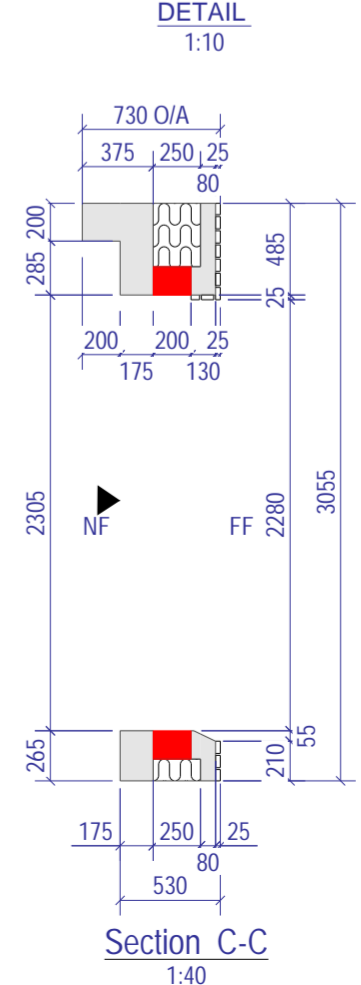
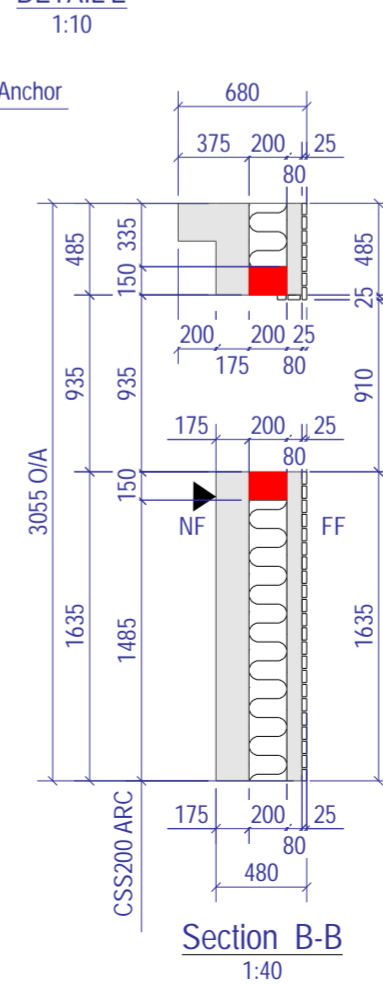
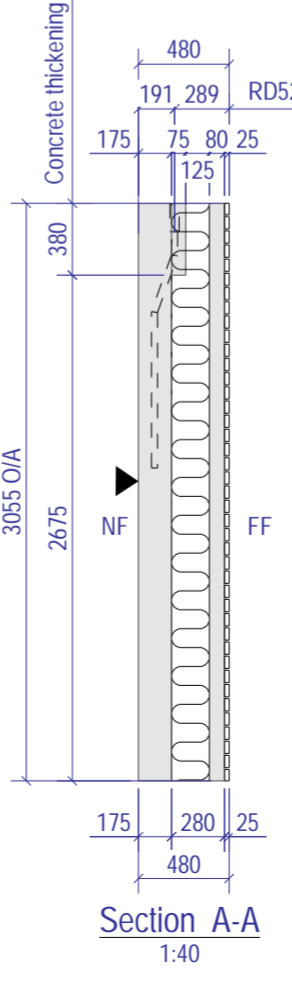
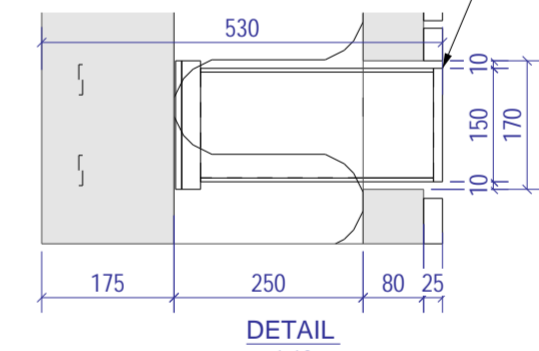
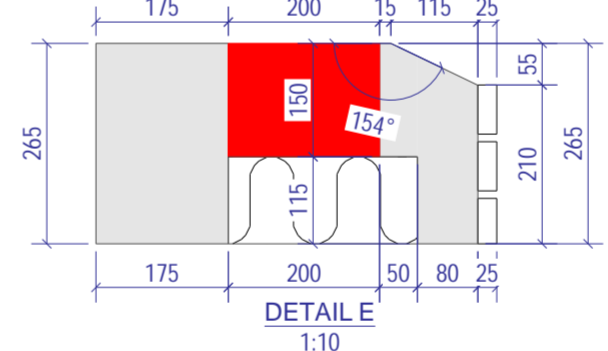
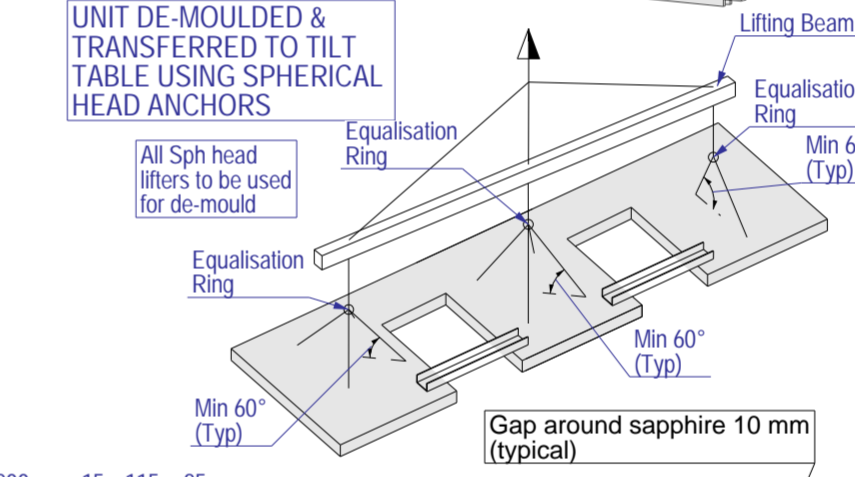
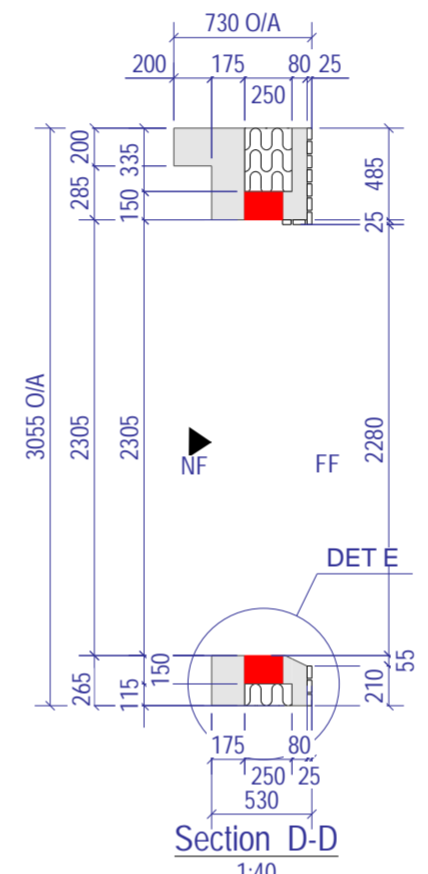
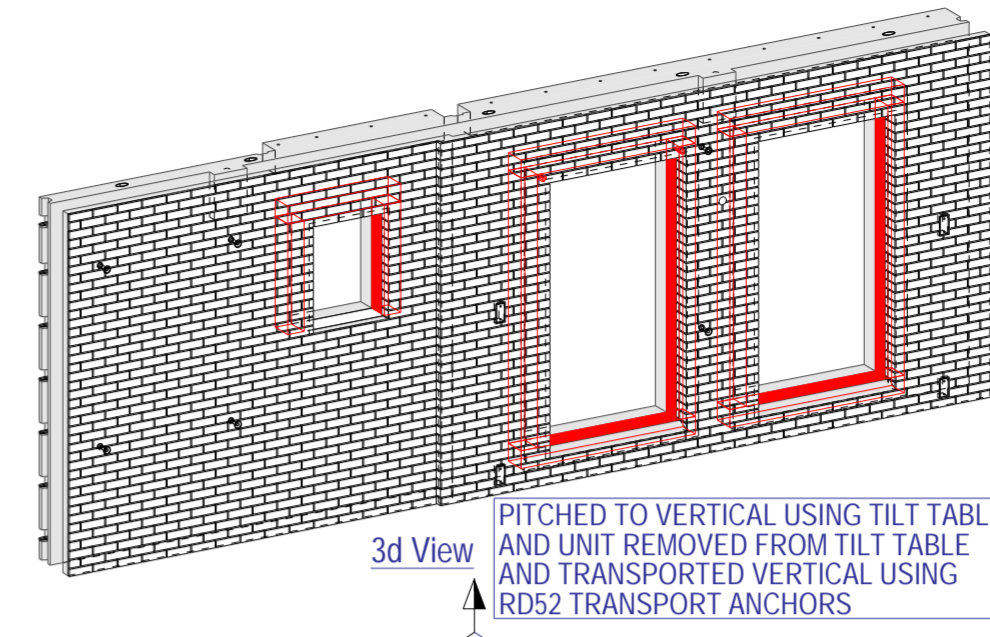
No.	Item	Ref.
-----	------	------

Type.	Insulated Panel
Length.	8418 +5/ -5
Height.	3055 +5/ -5
Thick.	730 +3 / -3
X to Y (Diag)	8955 +5 / -5
Conc. Weight	12.74(T)
Total Weight	13.48(T)
Volume Ext.	1.63 (m ³)
Volume Int.	3.47 (m ³)
Concrete Ext.	C45/55 Mix: GRA-01
Concrete Int.	C45/55 Mix: GRA-01
Exposure Class	Int: XC1 Ext: XC3
Fire Rating	90 mins /120 mins
Lifting Strength.	25N/mm ²
Finishes.	NF Power Float
RC Drg. Ref.	03-GRA-0058-IP-1075-RC
Ins Drg. Ref.	03-GRA-0058-IP-1075-INS
Bricks/Reckli Ref.	N/A Reckli: N/A, Bricks: See BR
Cover.	Refer to RC Drawing
Casting Bed.	Flat
Mark.	IP-1075
Stacking.	Vertical

Level	Quantity
3	1
Total	1

ENCAST ITEMS: PER UNIT

No.	Item	Ref.
14	VS-Loop-100	BGW-CL-100
14	VS-Loop-80	BGW-CL-80
13	M24 Crosspin Socket	SSSCP24100 SS
8	Spherical Head Anchor	SAP0075120
5	Well Void	WV11555
4	CSS200 ARC	VERTICAL 1598.0mm
4	Sapphire Type 1	Sapphire Type 1
4	M16 Crosspin Socket	SSSCP1675
4	CSS200 ARC	HORIZONTAL 2305.0mm
2	CSS200 ARC	VERTICAL 1035.0mm
2	CSS200 ARC	HORIZONTAL 935.0mm
1	Conduit NoteE1+F	NoteE1+F
1	RD52 Transport Anchor	67M52GK



Rev	Date	Issued For	Revision	By	Chk	App
C01	07-04-23	Issued For Manufacture		APO	OVA	MMI
		Revision Detail				

FP McCann
 Byley, King's Lane, Middlewich, Cheshire CW15 9UB. Tel: +44 (0)1606 843500 www.fpmccann.co.uk

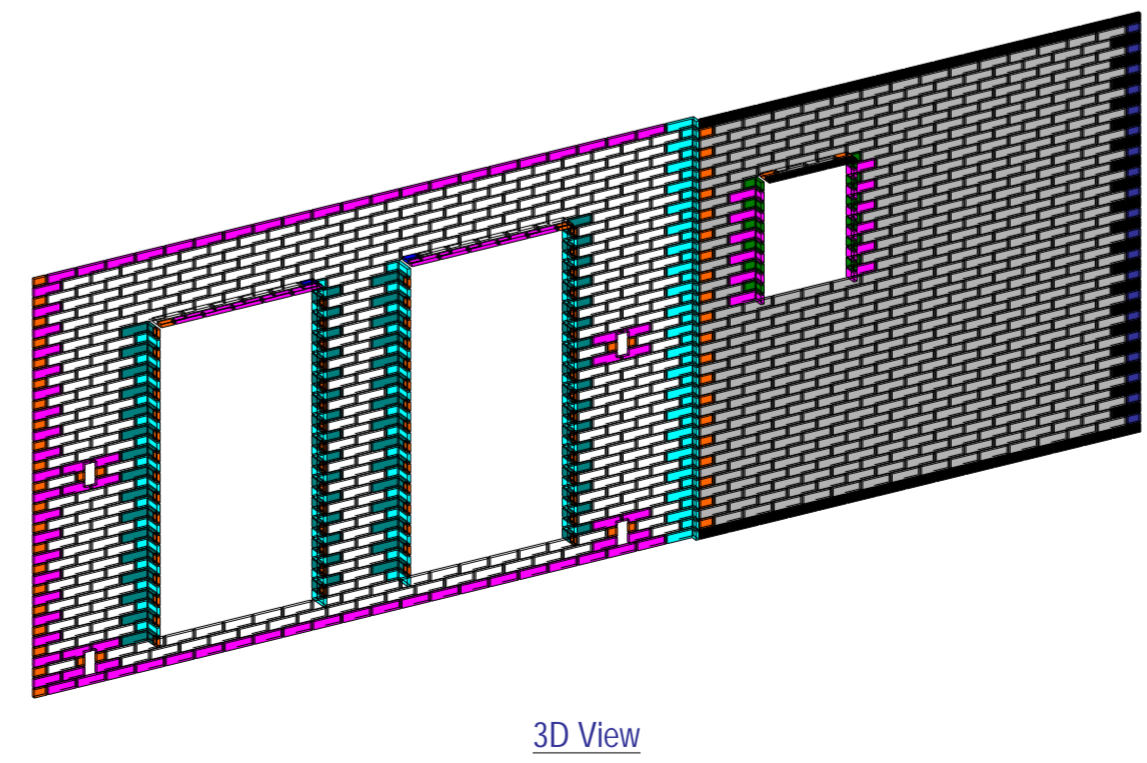
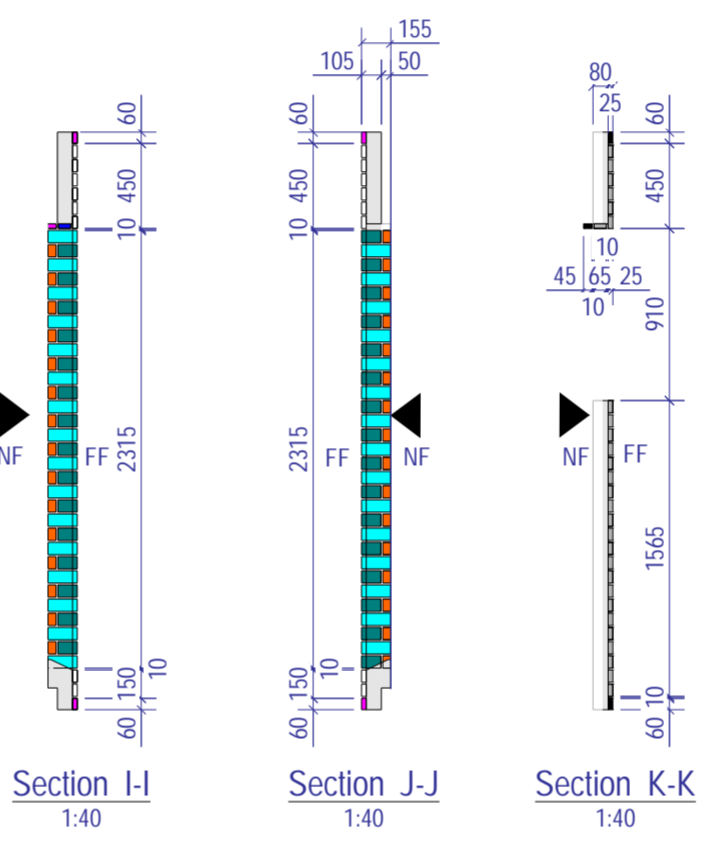
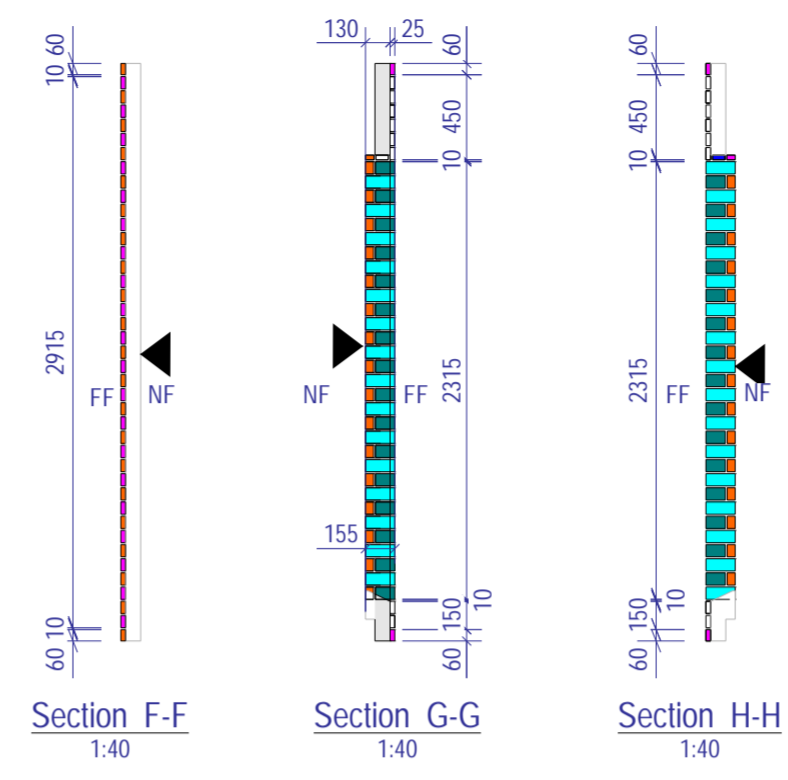
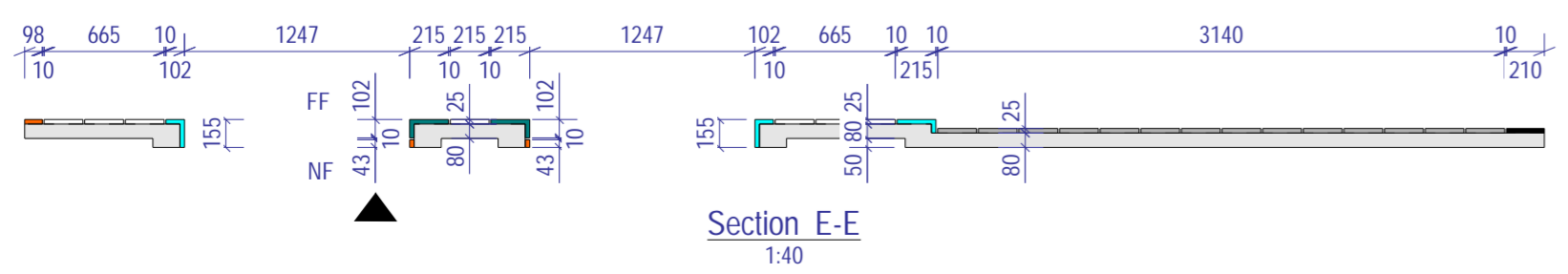
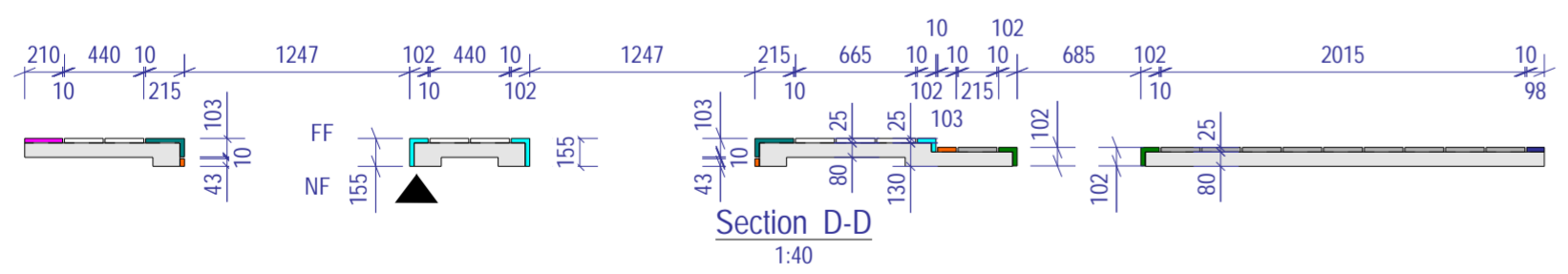
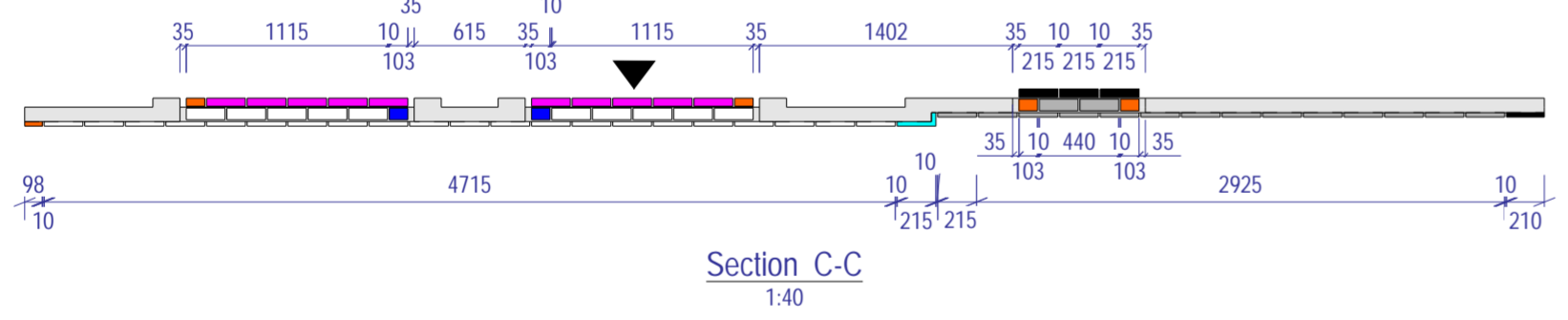
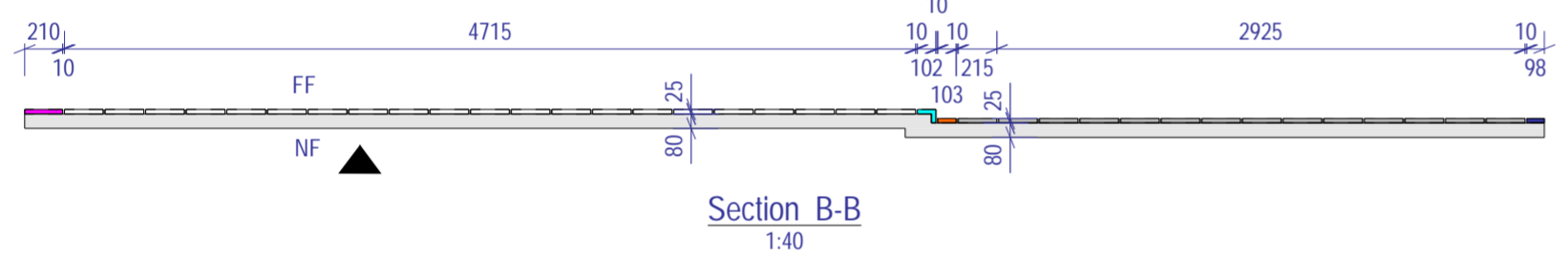
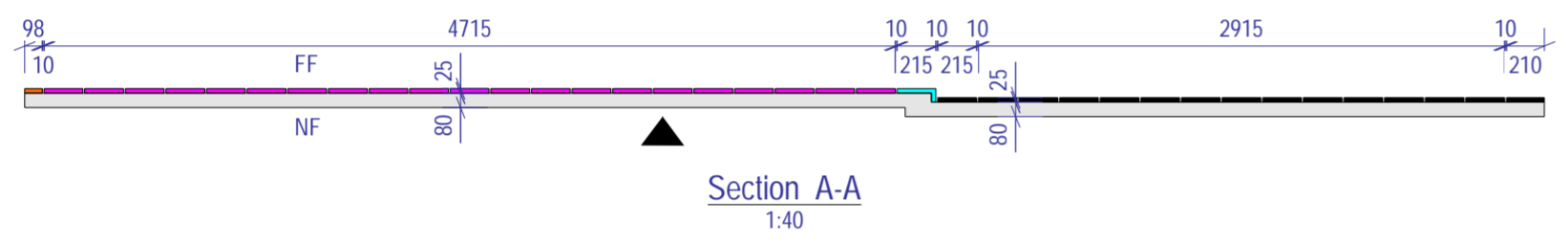
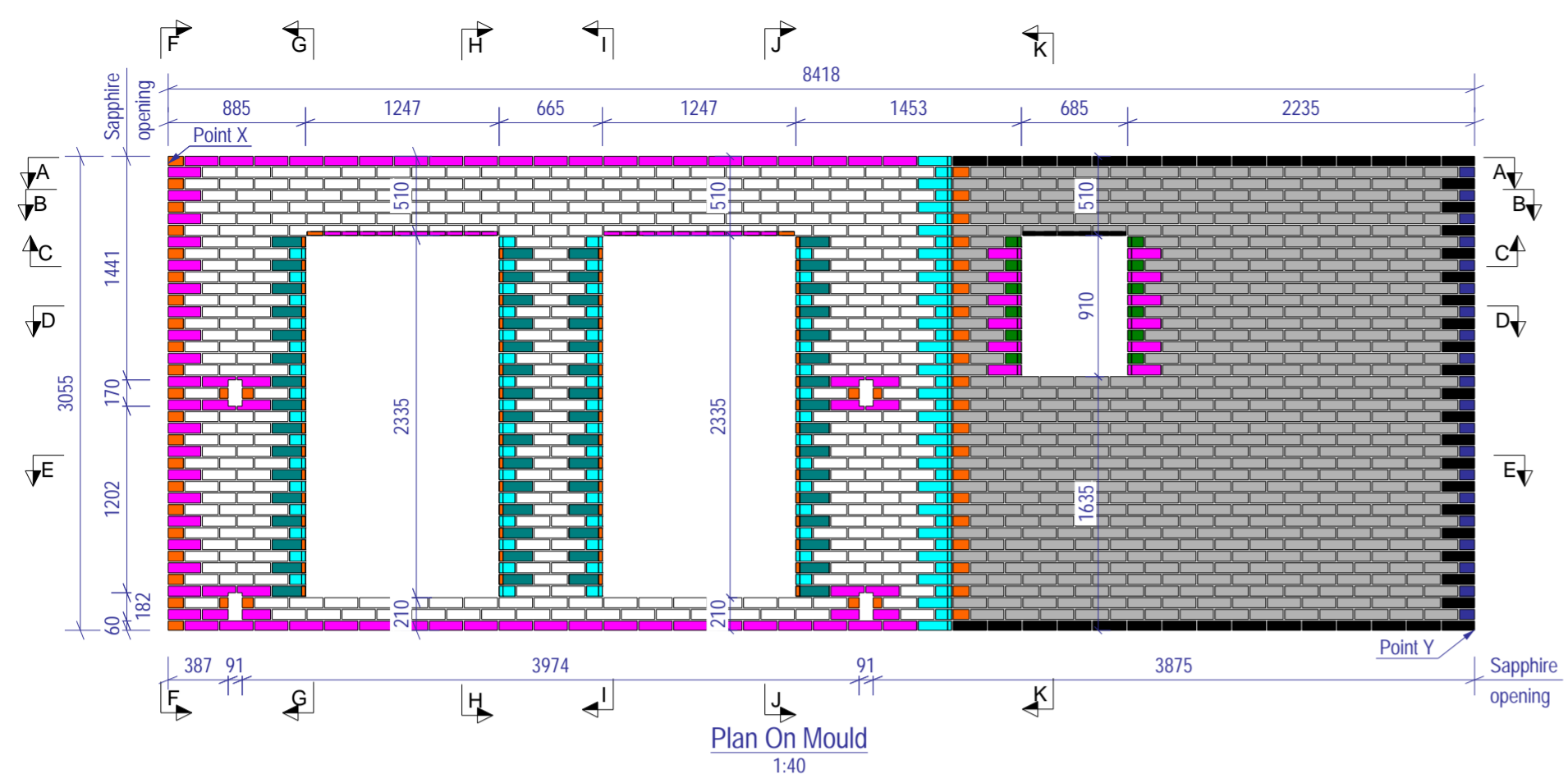
FP McCann
 Grantham, Alma Park Road, Grantham, Lincolnshire, NG31 5SE. Tel: +44 (0)1476 562277 www.fpmccann.co.uk

Client: **Hollybrook Homes**

Project: **Roneo Corner, Hornchurch**

Title: **GA of Insulated Panel IP-1075**

Scale: As Shown	Status: Issued for Manufacture - A
Date: 06-04-23	Drawn: APO
Checked: OVA	Approved: MMI
Drawing No: 03-GRA-0058-IP-1075-GA	Rev: C01



BRICK ITEMS: PER UNIT
Refer to drawing 03-GRA-0058-FPM-RC-XX-DR-X-1400

No.	Item	Avenue Smooth Black
494	Stretcher	
22	Header	
20	Cut Header 97x65	
12	Cut Pistol 102x65x102	
28	Cut Stretcher 215x60	
19	Cut Stretcher 210x65	
3	Cut Stretcher 215x45	
2	Cut Stretcher 210x60	
12	Pistol	

Mortar Specification: Ulrascape Cempoint Black

BRICK ITEMS: PER UNIT
Refer to drawing 03-GRA-0058-FPM-RC-XX-DR-X-1400

No.	Item	Kemsley Yellow
375	Stretcher	
2	Header	
62	Cut Header 42x65	
19	Cut Header 97x65	
2	Cut Header 102x45	
2	Cut Header 97x60	
2	Cut Header 70x65	
2	Cut Header 69x65	
2	Cut Header 55x65	
2	Cut Header 54x65	
62	Cut Pistol 155x65x102	
20	Cut Pistol 102x65x75	
19	Cut Pistol 215x65x75	
2	Cut Pistol 215x60x75	
1	Cut Stretcher 183x65	
1	Cut Stretcher 181x65	
1	Cut Stretcher 168x65	
1	Cut Stretcher 166x65	
42	Cut Stretcher 215x60	
20	Cut Stretcher 210x65	
12	Cut Stretcher 215x65	
10	Cut Stretcher 215x45	
62	Pistol	

Mortar specification:
Ulrascape Regency Limepoint Sandstone

All joints in brickwork 10mm nominal (unless noted otherwise)
Raked pointing required (unless noted otherwise)

NOTES:

Type.	Insulated Panel
Mark.	IP-1075
GA Drg. Ref.	03-GRA-0058-IP-1075-GA
Quantity.	1
Cover	25mm Nominal, (20mm Minimum)

- Reinforcement (500B or C) to BS4449.
- Scheduling, dimensioning, bending and cutting to BS8666.
- Cage to be tack welded and/or tied with 17 gauge annealed tying wire.

▲ = Viewing arrow

C01	07-04-23	Issued For Manufacture	APO	OVA	MMI
Rev	Date	Revision Detail	By	Chk	App
		FP McCann Byley, King's Lane, Byley, Middlewich, Cheshire CW119 9NB. www.fpmccann.co.uk	FP McCann Grantham, Alma Park Road, Grantham, Lincolnshire, NG31 5SE. Tel: +44 (0)1476 562277 www.fpmccann.co.uk		

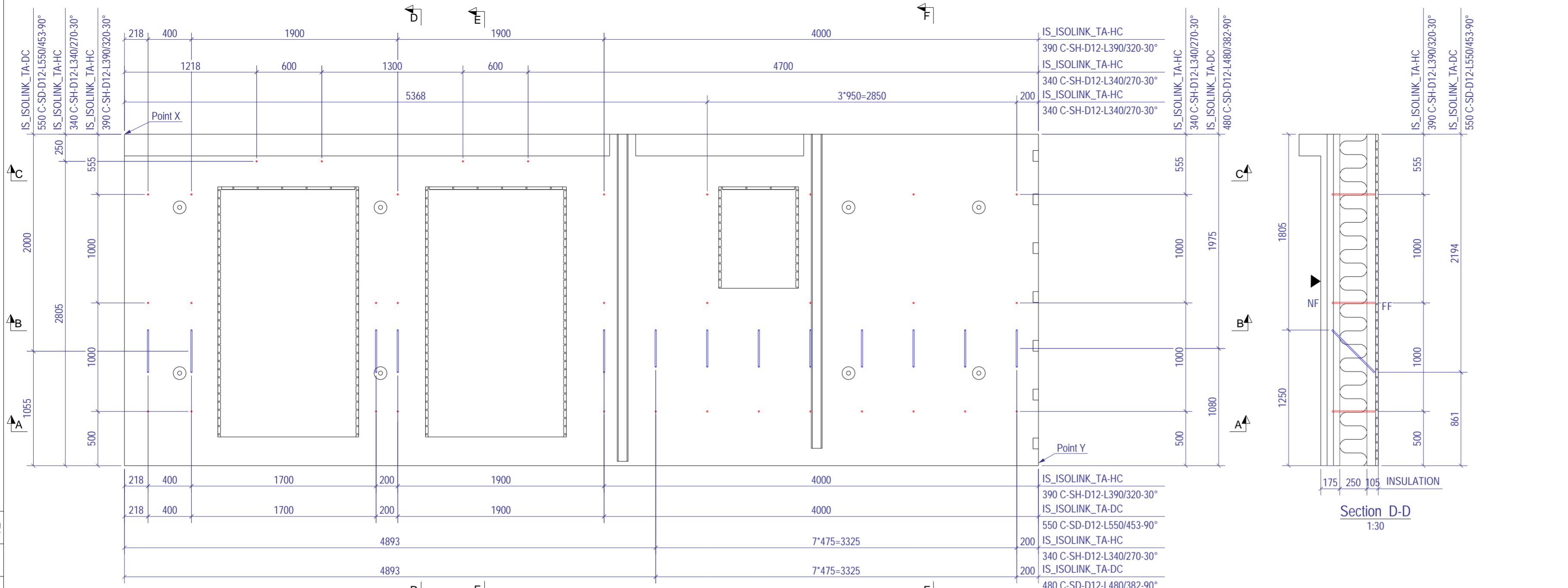
Client: Hollybrook Homes

Project: Roneo Corner, Hornchurch

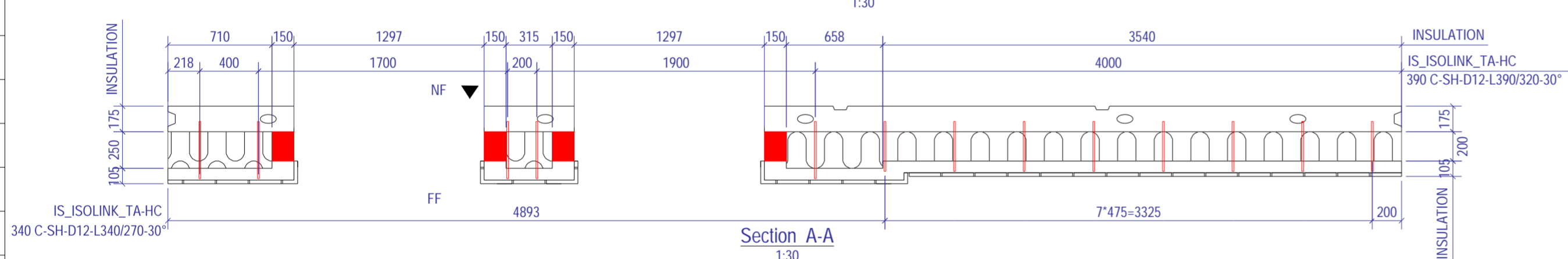
Title: BR of Insulated Panel IP-1075

Scale: As Shown
Date: 06-04-23
Status: Issued for Manufacture - A

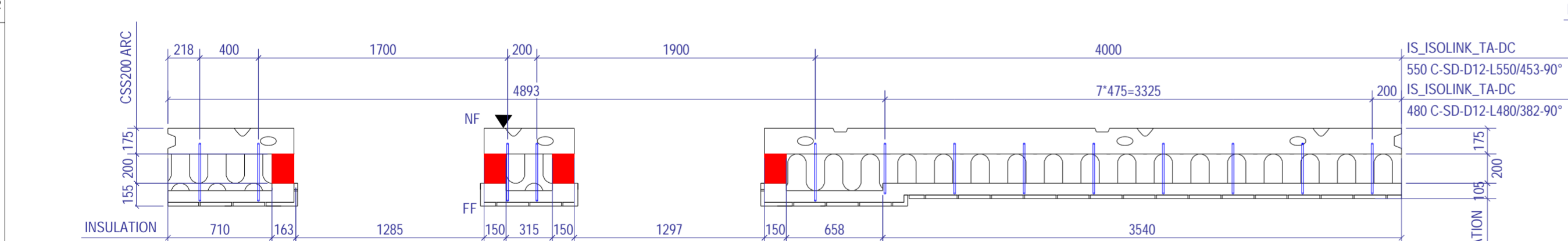
Drawn: APO
Checked: OVA
Approved: MMI
Drawing No: 03-GRA-0058-IP-1075-BR
Rev: C01



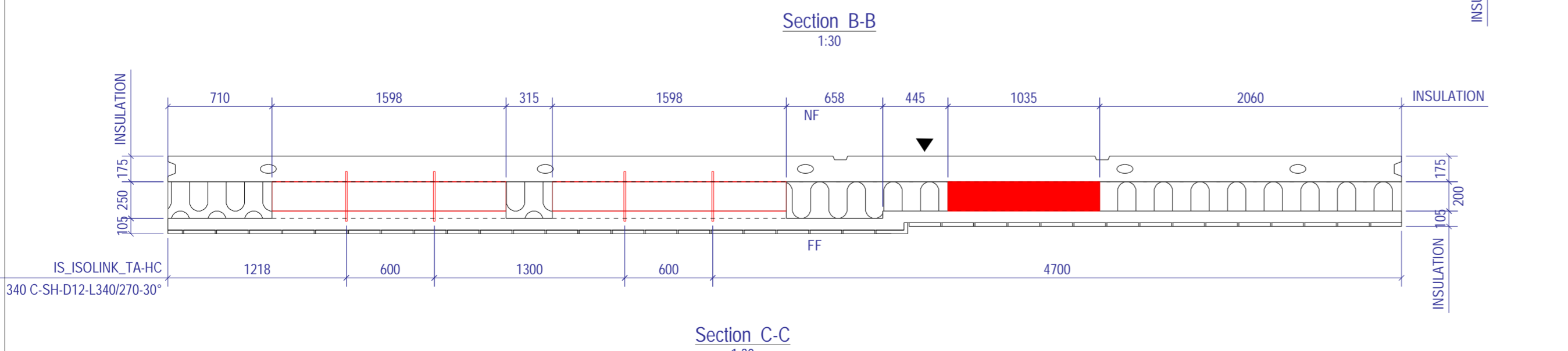
Plan On Mould Showing Tie Setting Out
1:30



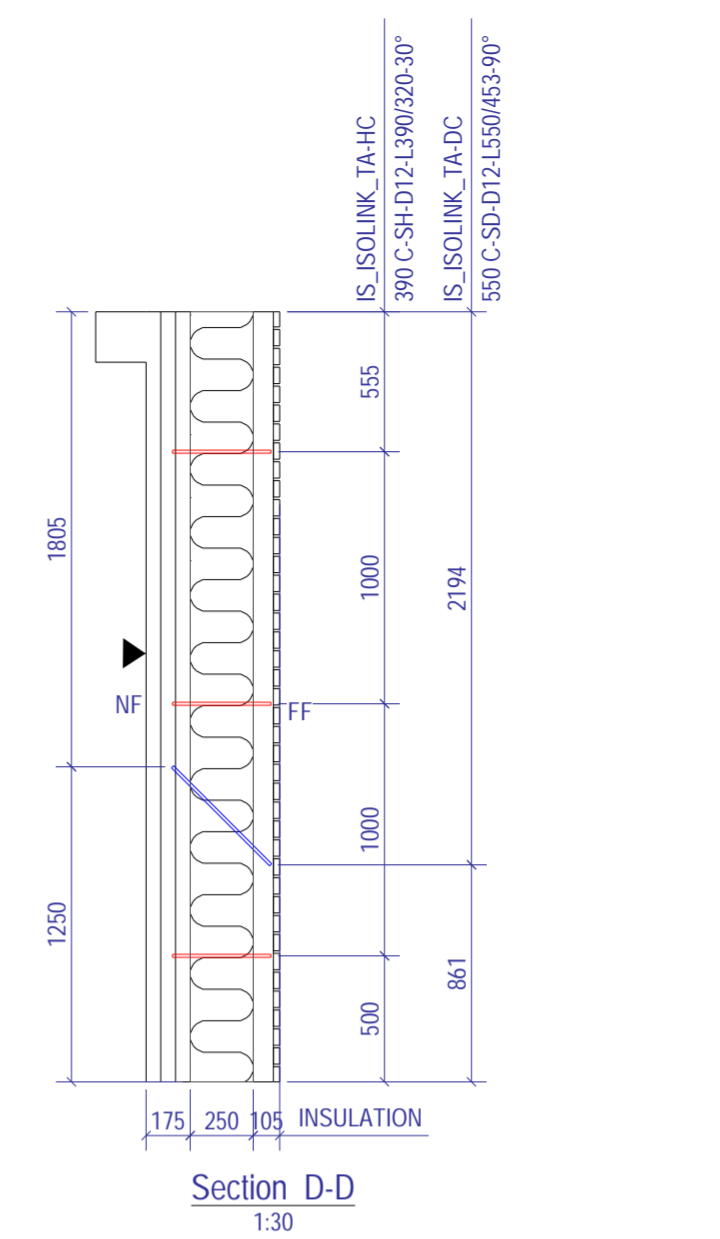
Section A-A
1:30



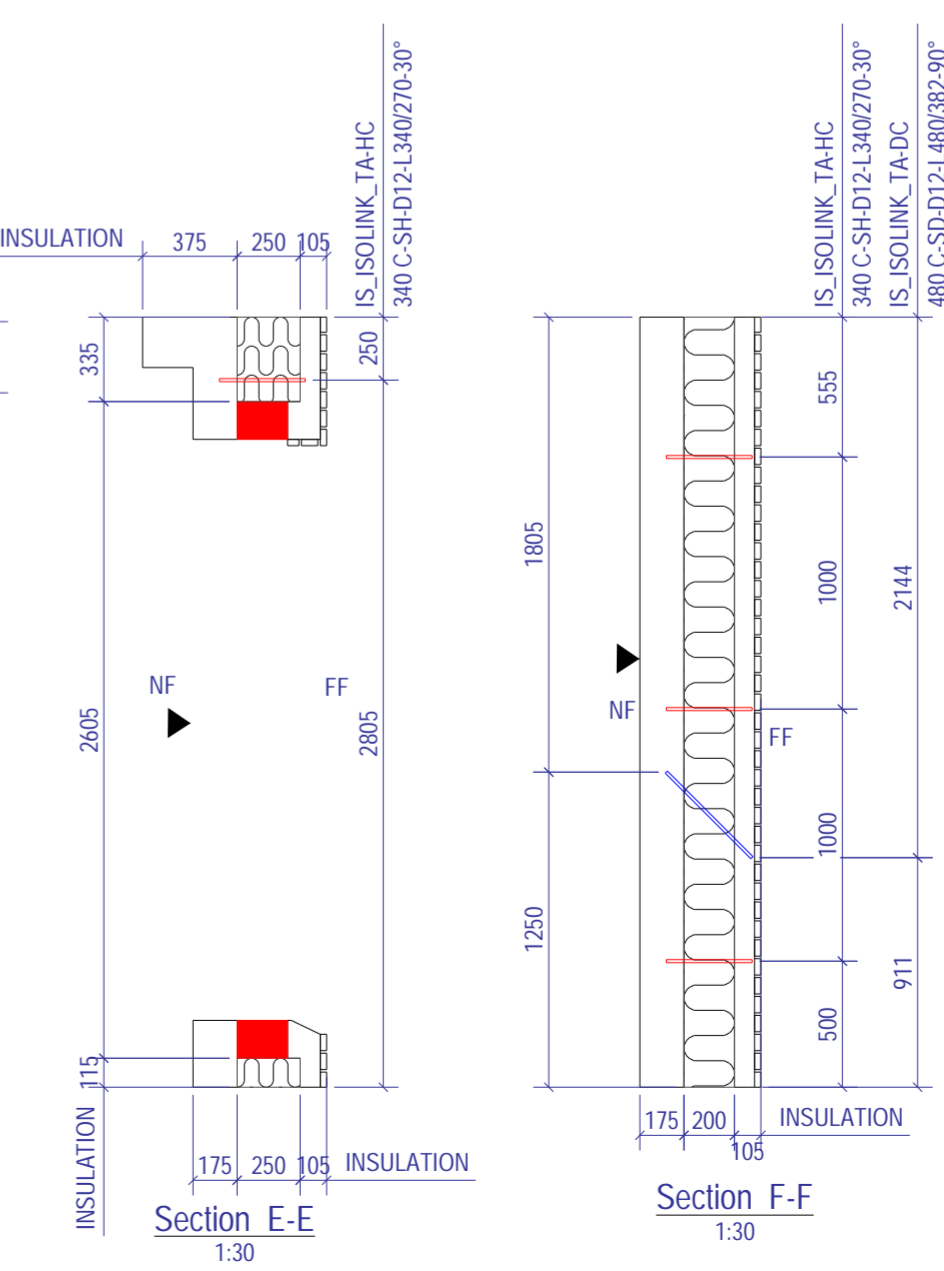
Section B-B
1:30



Section C-C
1:30



Section D-D
1:30



Section E-E
1:30

Section F-F
1:30

NOTES:

Type.	Insulated Panel
Mark.	IP-1075
GA Drg. Ref.	03-GRA-0058-IP-1075-GA
Quantity.	1
Cover	25mm Nominal, (20mm Minimum)

- Reinforcement (500B or C) to BS4449.
- Scheduling, dimensioning, bending and cutting to BS8666.
- Cage to be tack welded and/or tied with 17 gauge annealed tying wire.

TIES / FIRE: PER UNIT

No.	Item	Ref.
20	IS_ISOLINK_TA-HC	C-SH-D12-L340/270-30°
14	IS_ISOLINK_TA-HC	C-SH-D12-L390/320-30°
8	IS_ISOLINK_TA-DC	C-SD-D12-L480/382-90°
5	IS_ISOLINK_TA-DC	C-SD-D12-L550/453-90°

▲ = Viewing arrow

C01	07-04-23	Issued For Manufacture	APO	OVA	MMI
-----	----------	------------------------	-----	-----	-----

Rev	Date	Revision Detail	By	Chk	App
		 FP McCann Byley, King's Lane, Byley, Middlewich, Cheshire CW11 9NB. Tel: +44 (0)1606 843500 www.fpmccann.co.uk			

Client: Hollybrook Homes

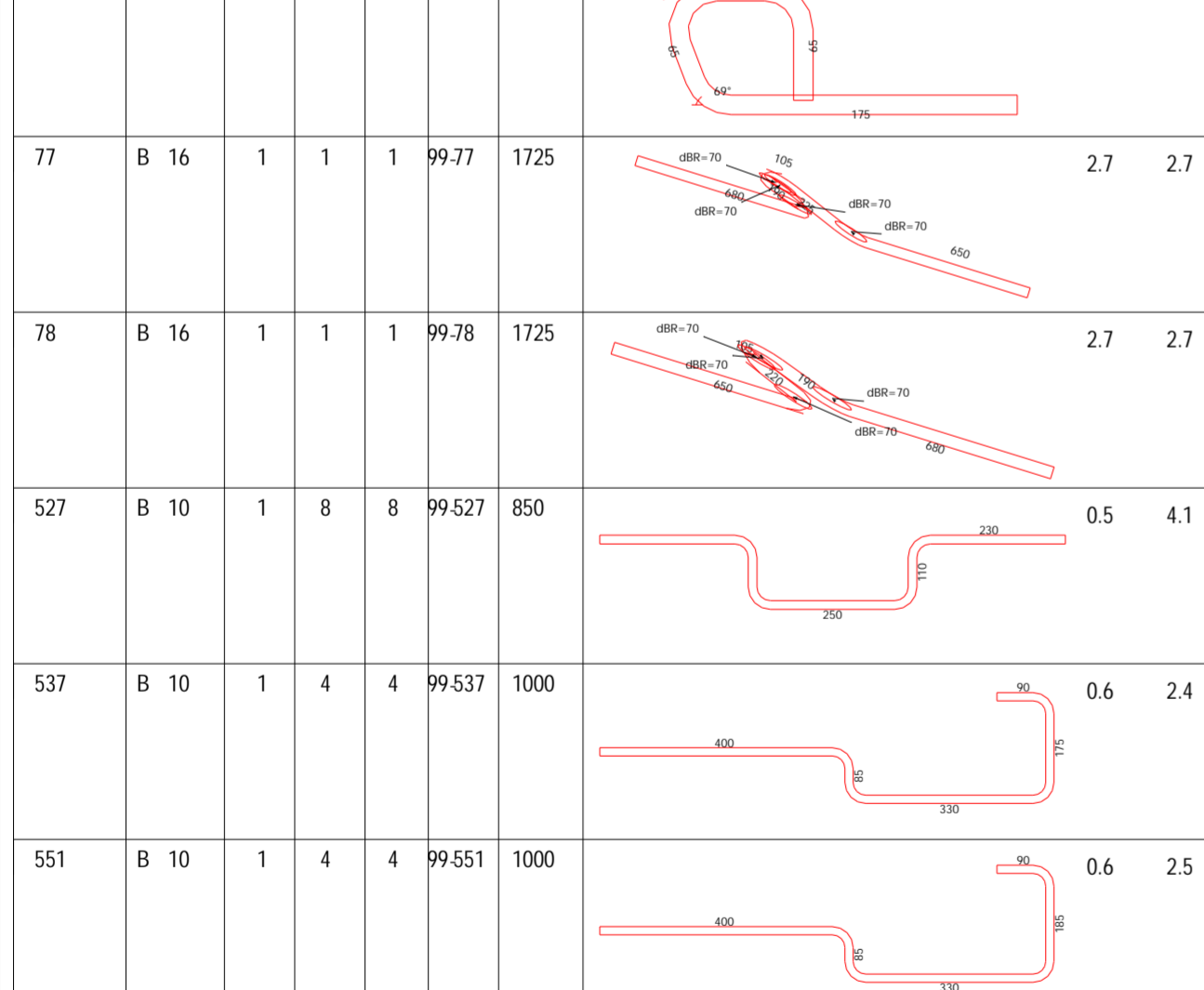
Project: Roneo Corner, Hornchurch

Title: INS of Insulated Panel IP-1075

Scale: As Shown	Status: Issued for Manufacture - A
Date: 06-04-23	

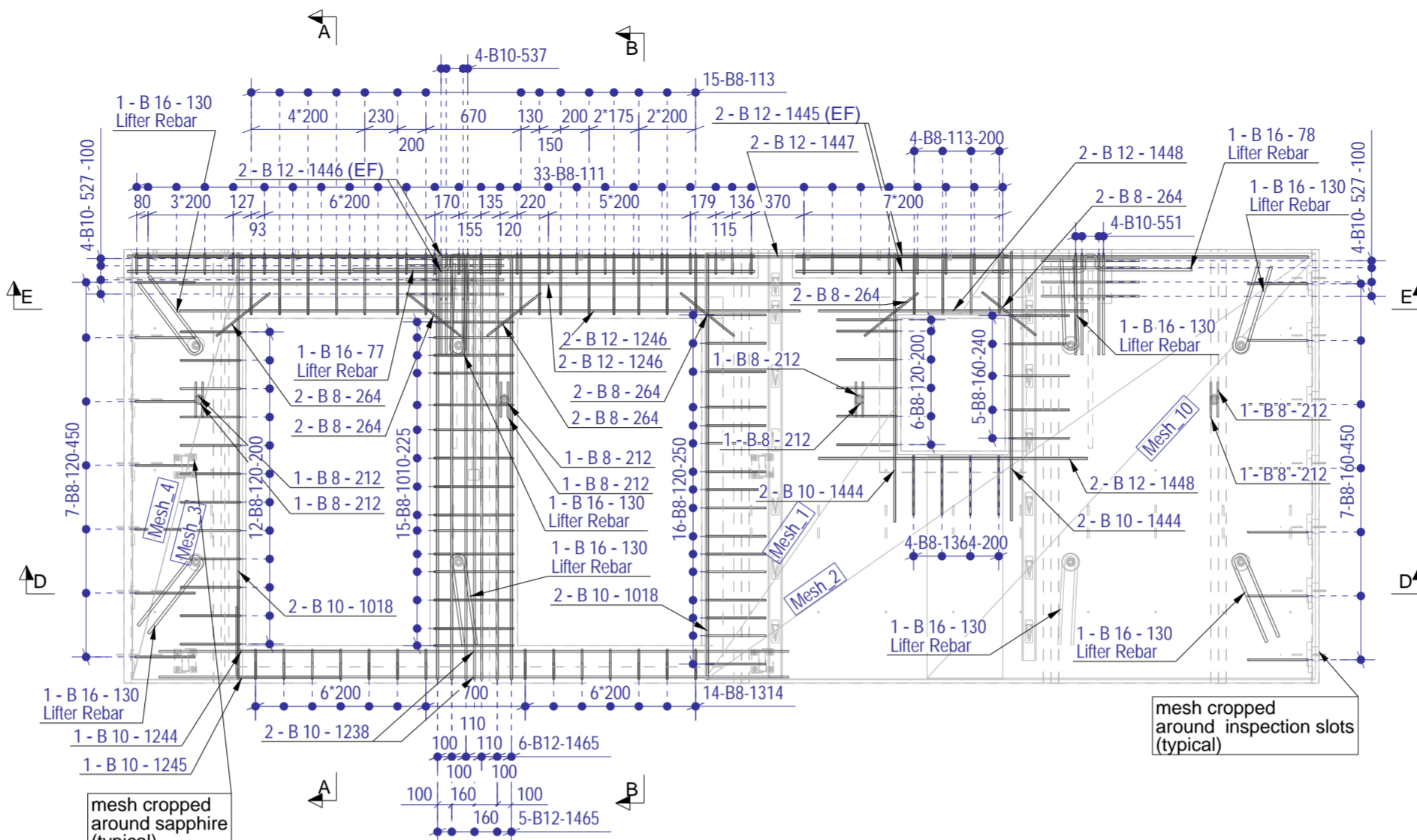
Drawn: APO	Checked: OVA	Approved: MMI
Drawing No: 03-GRA-0058-IP-1075-INS	Rev: C01	

Bar Mark	Type & Size	No. of members	No. per member	Total No.	Shape Code	Lgth of each bar #	a *	b *	c *	d *	e *	r	kg/bar	kg/all
108	B 8	1	64	64	22	525	75	95	75	325			0.2	13.1
111	B 8	1	33	33	51	1075	310	150	115	115			0.4	13.8
113	B 8	1	19	19	51	1225	435	105	115	115			0.5	9.1
120	B 8	1	41	41	21	925	425	125	425				0.4	15.2
130	B 16	1	8	8	13	1325	650	110	650				2.1	16.9
160	B 8	1	12	12	21	925	425	115	425				0.4	4.4
212	B 8	1	8	8	13	325	155	60	155				0.1	1.1
264	B 8	1	12	12	00	475	480						0.2	2.3
1010	B 8	1	15	15	51	1525	565	125	115	115			0.6	9.0
1018	B 10	1	4	4	00	3000	3005						1.9	7.4
1069	B 8	1	12	12	00	3000	3005						1.2	14.2
1138	B 8	1	2	2	00	1525	1545						0.6	1.2
1207	B 8	1	4	4	00	1525	1540						0.6	2.4
1238	B 10	1	2	2	00	4425	4435						2.7	5.5
1244	B 10	1	1	1	11	1200	505	715				20	0.7	0.7
1245	B 10	1	1	1	11	1200	505	730				20	0.7	0.7
1246	B 12	1	4	4	00	4350	4370						3.9	15.5
1251	B 8	1	2	2	00	4100	4100						1.6	3.2
1255	B 8	1	16	16	22	525	75	95	70	325			0.2	3.3
1299	B 8	1	16	16	23	675	325	60	325				0.3	4.3
1306	B 8	1	8	8	00	2550	2555						1.0	8.1
1314	B 8	1	14	14	51	825	215	125	115	115			0.3	4.5
1364	B 8	1	4	4	21	900	425	100	425				0.4	1.4
1405	B 8	1	1	1	1	4050	115	3860	115				1.6	1.6
1444	B 10	1	4	4	00	1875	1895						1.2	4.7
1445	B 12	1	4	4	00	1475	1495						1.3	5.3
1446	B 12	1	4	4	00	4400	4415						3.9	15.7
1447	B 12	1	2	2	00	8250	8265						7.3	14.7
1448	B 12	1	4	4	00	1875	1895						1.7	6.7
1465	B 12	1	11	11	00	2975	2985						2.7	29.2
1466	B 8	1	1	1	00	4300	4300						1.7	1.7
1254	B 8	1	14	14	99-1254	375							0.1	1.9

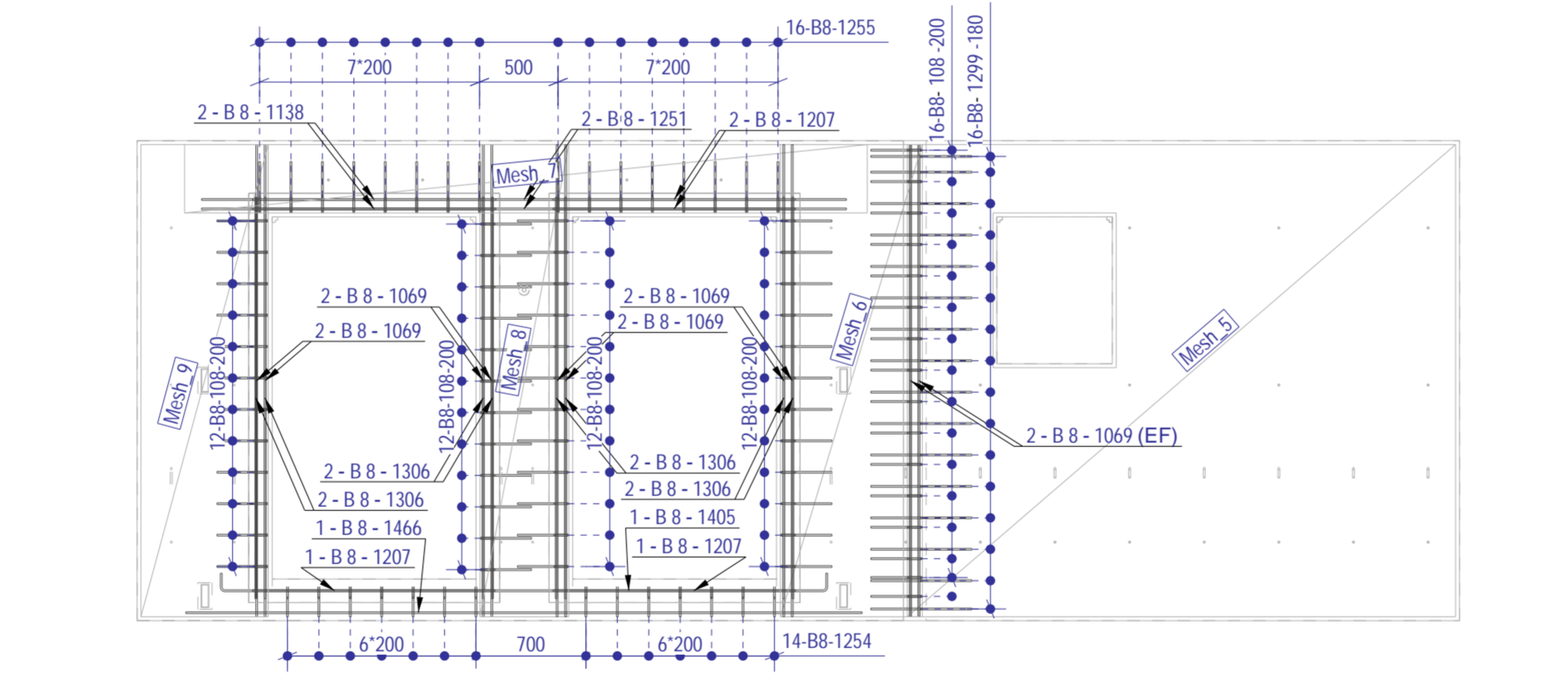


Mesh	1	2	3	4	5	6	7	8	9	10
Mesh_1	1	1	1	1	1	1	1	1	1	1
Mesh_2	1	1	1	1	1	1	1	1	1	1
Mesh_3	1	1	1	1	1	1	1	1	1	1
Mesh_4	1	1	1	1	1	1	1	1	1	1
Mesh_5	1	1	1	1	1	1	1	1	1	1
Mesh_6	1	1	1	1	1	1	1	1	1	1
Mesh_7	1	1	1	1	1	1	1	1	1	1
Mesh_8	1	1	1	1	1	1	1	1	1	1
Mesh_9	1	1	1	1	1	1	1	1	1	1
Mesh_10	1	1	1	1	1	1	1	1	1	1

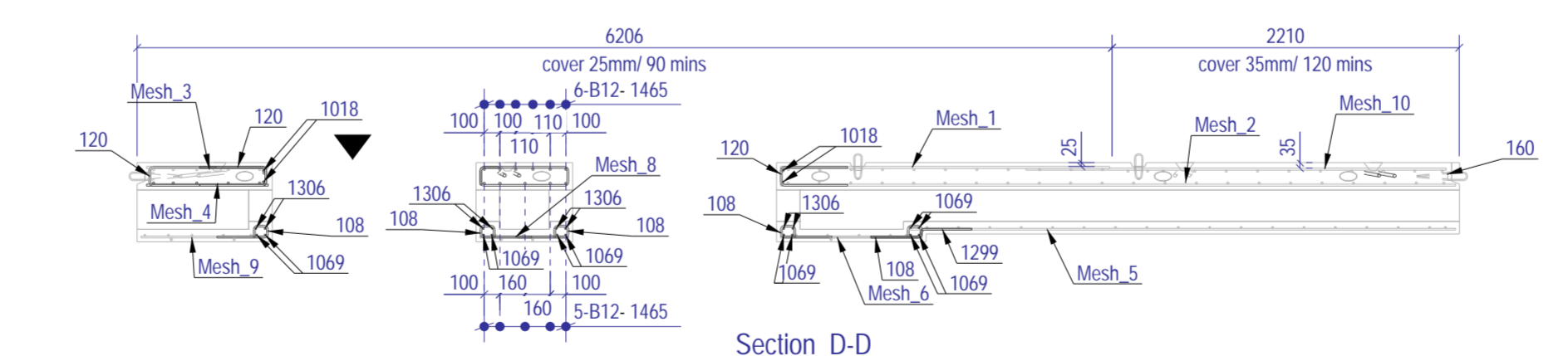
This Schedule complies with the requirements of BS 8666:2005 * Specified in multiples of 5mm # Specified in multiples of 25mm
 Total Rebar Weight (kg) 519.97



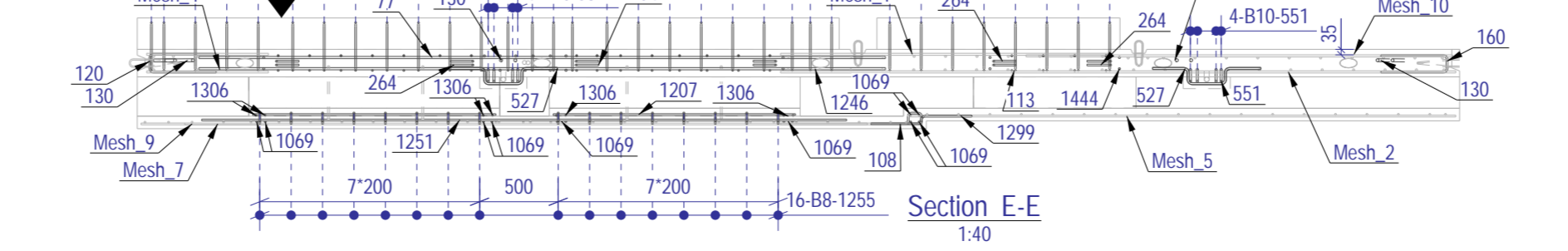
Plan On Mould (Inner Leaf) 1:40



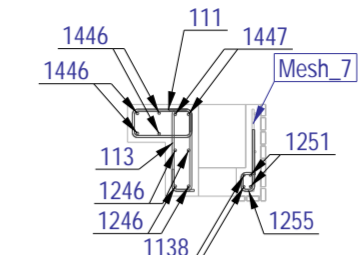
Plan On Mould (Outer Leaf) 1:40



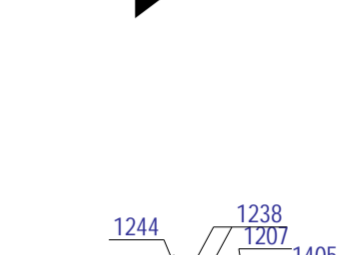
Section D-D 1:40



Section E-E 1:40



Section A-A 1:40

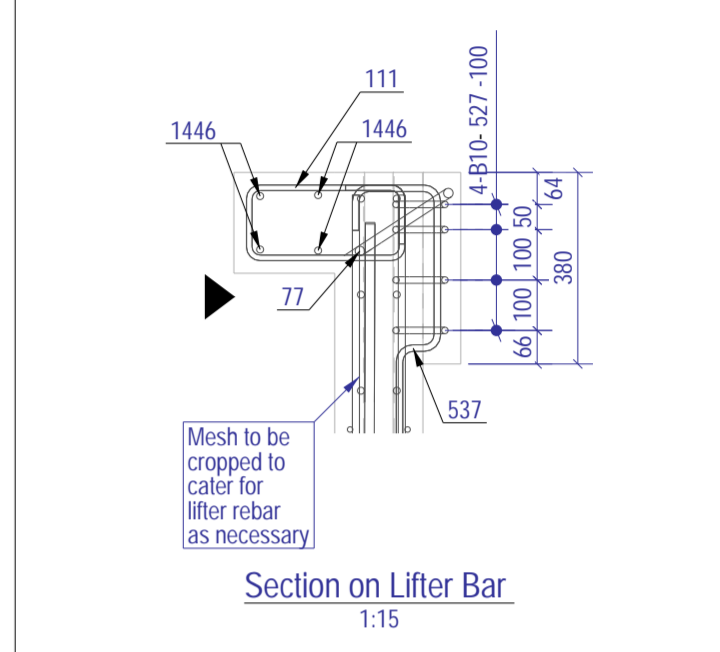


Section B-B 1:40

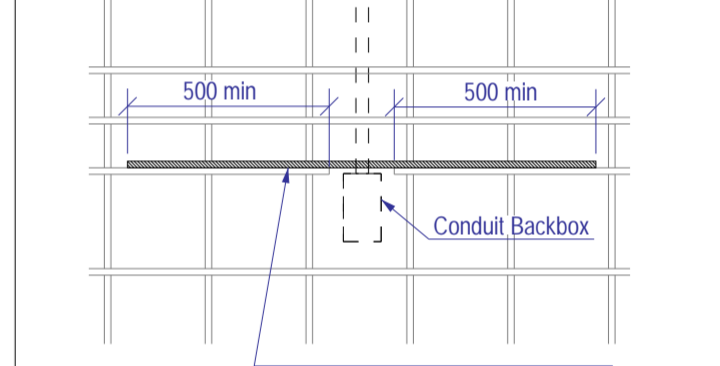
NOTES:

Type.	Insulated Panel
Mark.	IP-1075
GA Drg. Ref.	03-GRA-0058-IP-1075-GA
Quantity.	1
Cover	25mm/ 35mm

- Reinforcement (500B or C) to BS4449.
- Scheduling, dimensioning, bending and cutting to BS8666.
- Cage to be tack welded and/or tied with 17 gauge annealed tying wire.



Section on Lifter Bar 1:15



Note: If any mesh requires cropping to accommodate conduit backboxes then re-install with loose B12 bar, 500mm min lap each direction beyond the cutting points. Positioned as close to cut bar as possible.

Conduit Trimming Detail

NOTE: VIEW ARROW MUST BE SHOWN ON PANEL

▲ = Viewing arrow

C01	07-04-23	Issued For Manufacture	APO	OVA	MMI
Rev	Date	Revision Detail	By	Chk	App

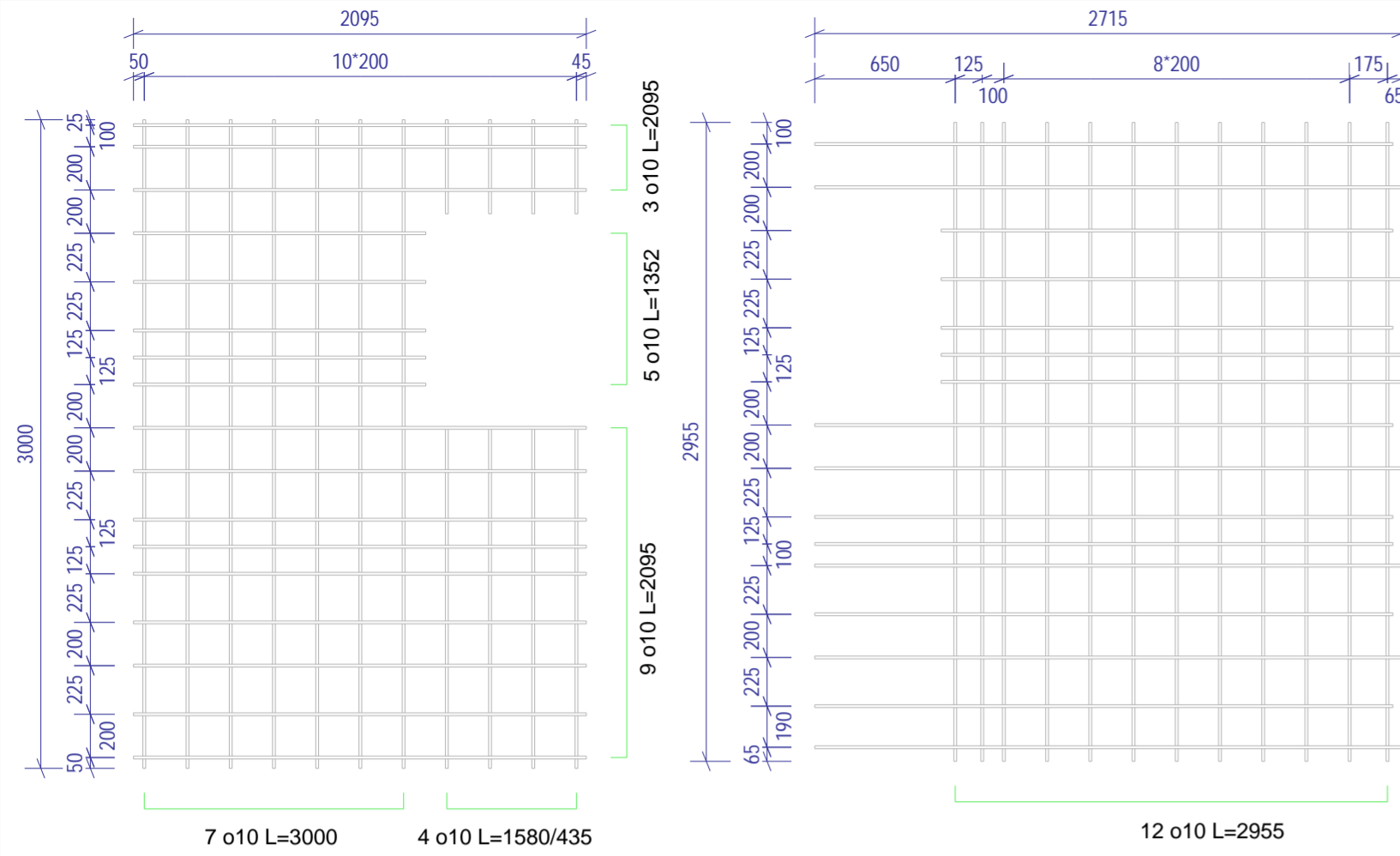
Client: Hollybrook Homes

Project: Roneo Corner, Hornchurch

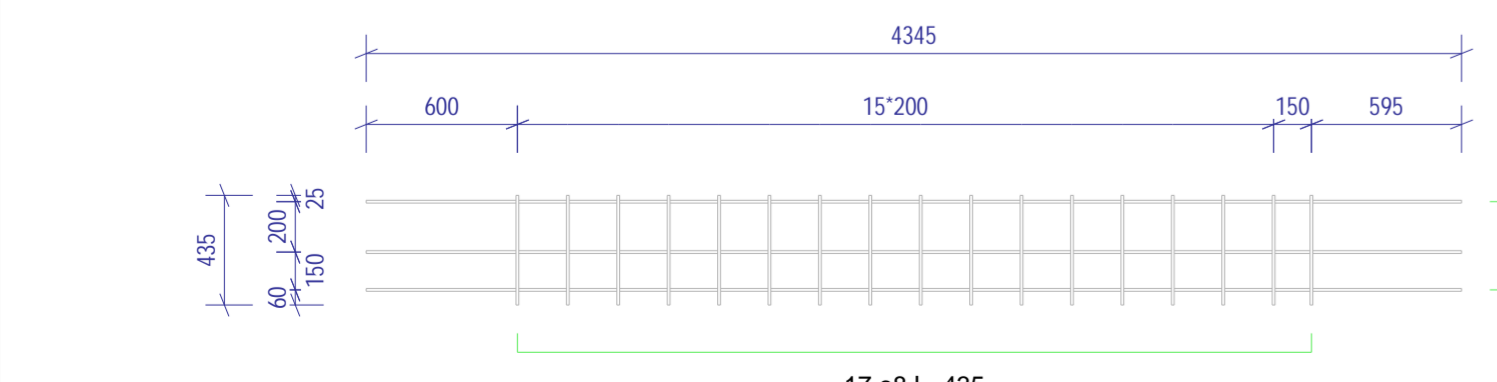
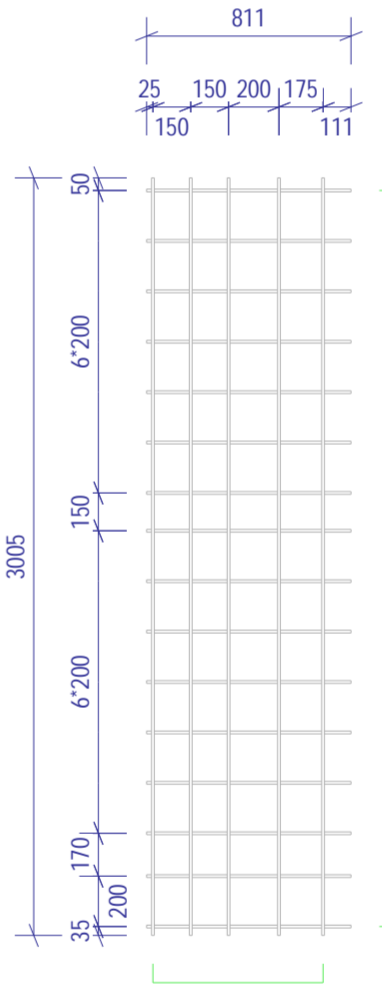
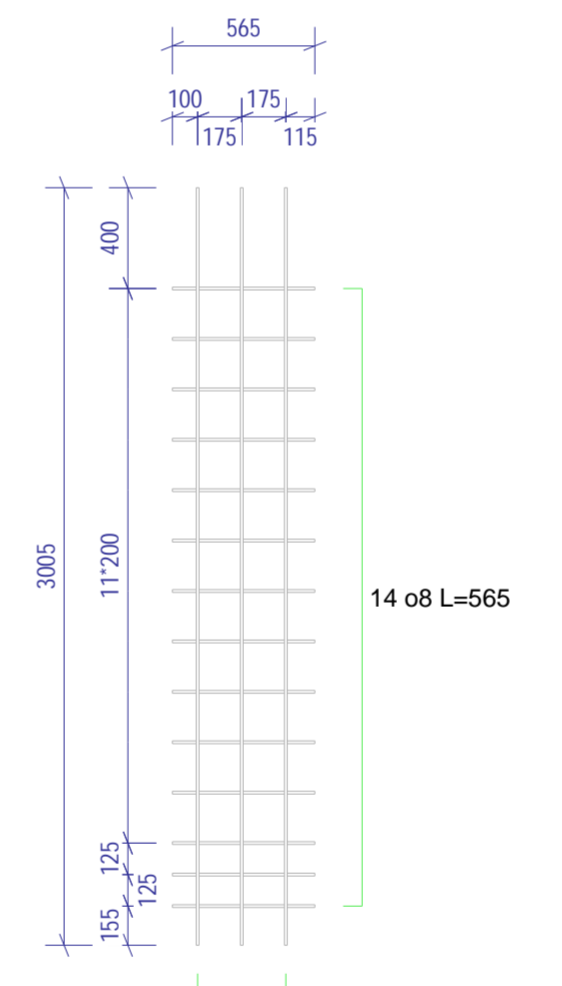
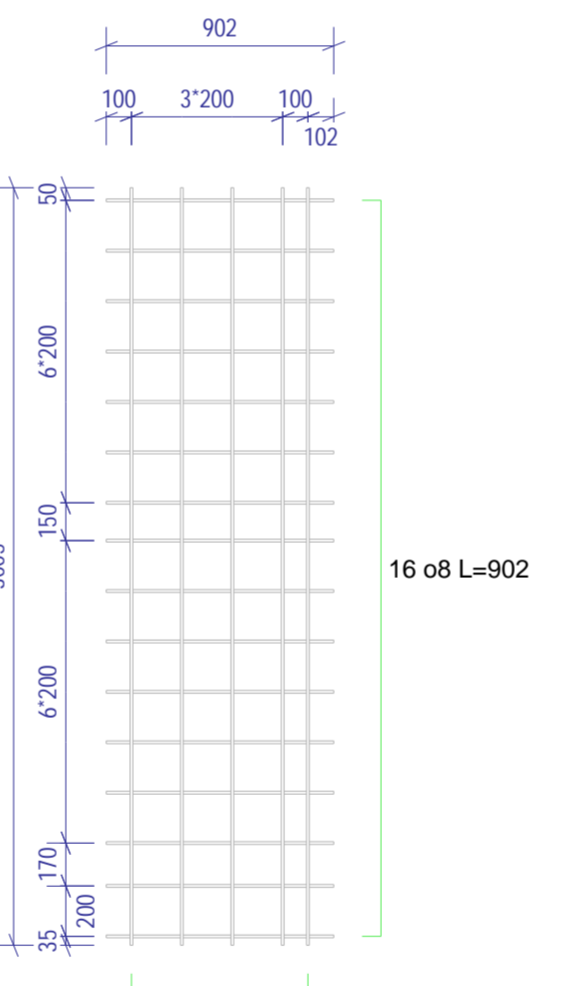
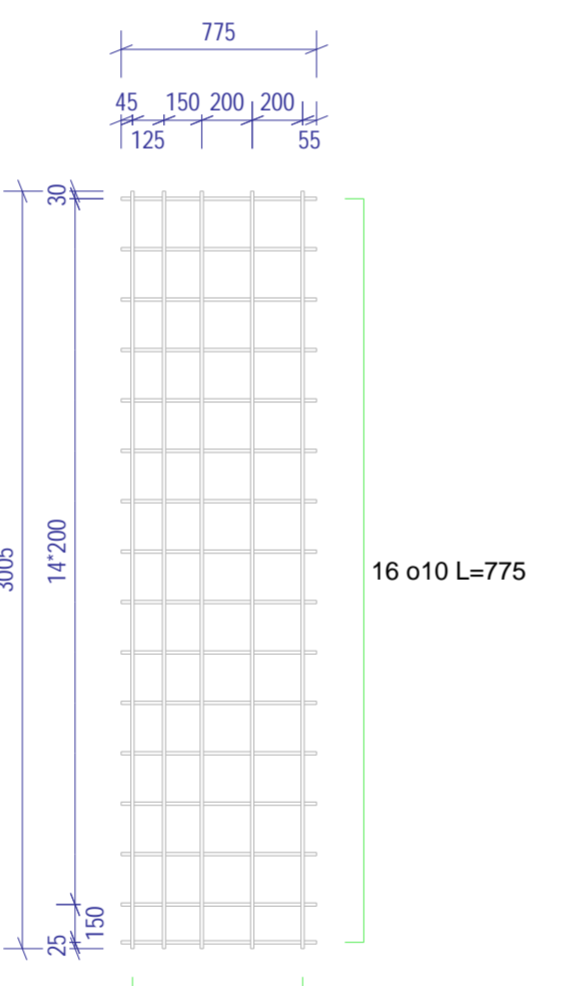
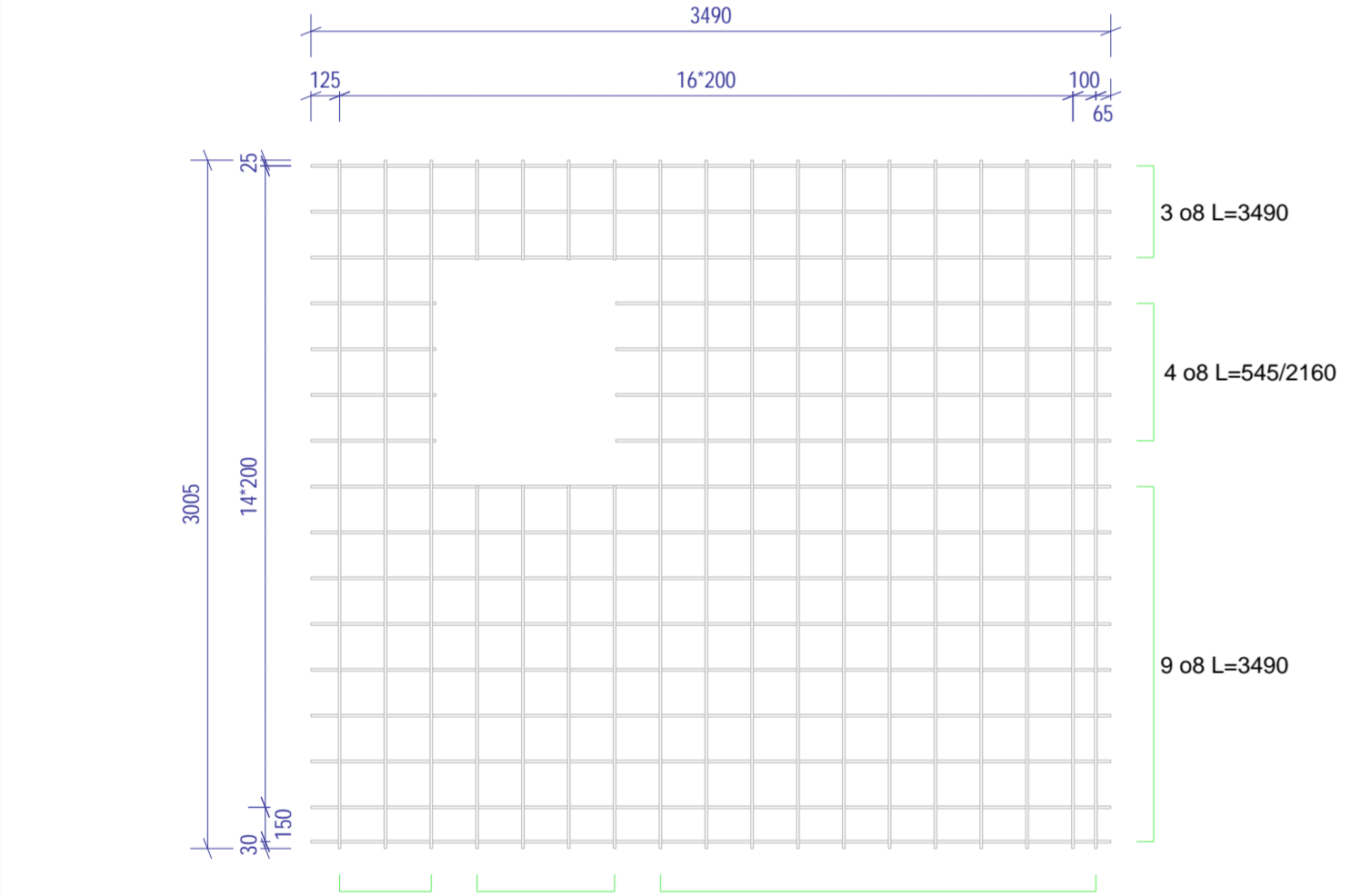
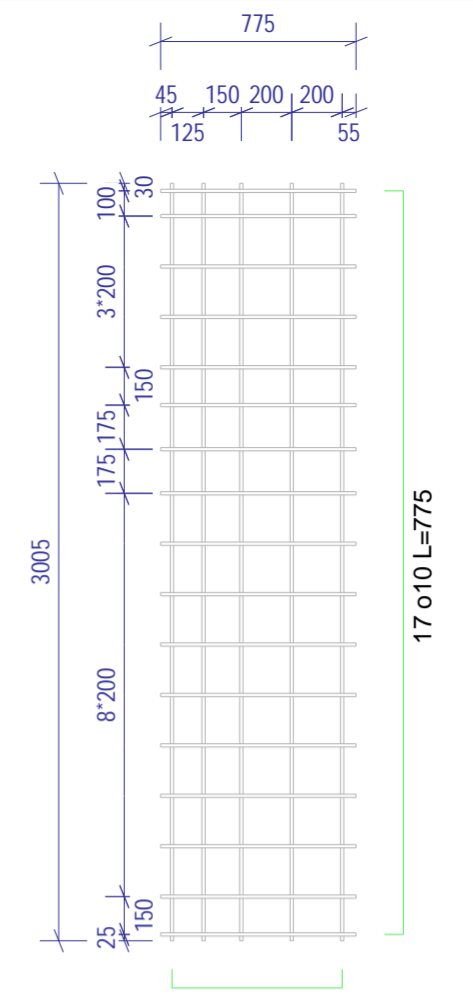
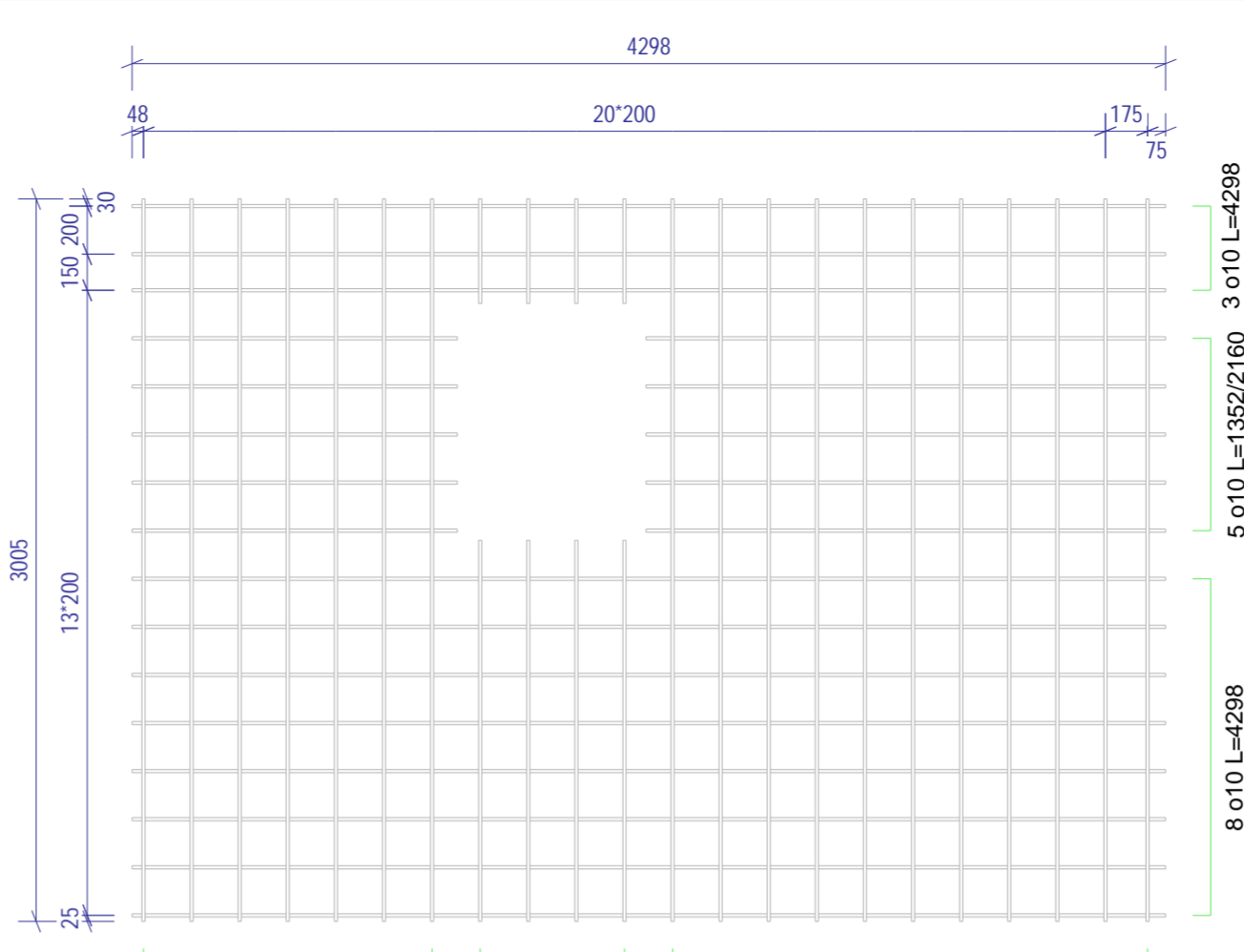
Title: RC1 of Insulated Panel IP-1075

Scale: As Shown	Status: Issued for Manufacture - A
Date: 06-04-23	Drawn: APO
Checked: OVA	Approved: MMI

Drawing No: 03-GRA-0058-IP-1075-RC1 Rev: C01



- o10 L=2675
- o10 L=2715
- o10 L=2090
- o10 L=2130
- o10 L=2090
- 2 o10 L=2130
- o10 L=2675
- o10 L=2715
- 2 o10 L=2675
- o10 L=2715
- o10 L=2675
- o10 L=2715
- o10 L=2675
- o10 L=2715



NOTES:

Type.	Insulated Panel
Mark.	IP-1075
GA Drg. Ref.	03-GRA-0058-IP-1075-GA
Quantity.	1
Cover	25mm Nominal, (20mm Minimum)

- Reinforcement (500B or C) to BS4449.
- Scheduling, dimensioning, bending and cutting to BS8666.
- Cage to be tack welded and/or tied with 17 gauge annealed tying wire.

Rev	Date	Revision Detail	By	Chk	App
C01	07-04-23	Issued For Manufacture			APO OVA MMI

MC fpmccann	FP McCann Byley, King's Lane, Byley, Middlewich, Cheshire CW15 9NB. Tel: +44 (0)1606 843500 www.fpmccann.co.uk	FP McCann Grantham, Alma Park Road, Grantham, Lincolnshire, NG31 5SE. Tel: +44 (0)1476 562277 www.fpmccann.co.uk
	Client: Hollybrook Homes	

Project: **Roneo Corner, Hornchurch**

Title: **RC2 of Insulated Panel IP-1075**

Scale: As Shown	Status: Issued for Manufacture - A
Date: 06-04-23	

Drawn: APO	Checked: OVA	Approved: MMI
Drawing No: 03-GRA-0058-IP-1075-RC2	Rev: C01	