

ALL CONDUITS DIMENSIONS ARE TO CENTRE OF BACKBOXES  
 FOR JOINT TYPES SEE DRAWING 03-GRA-0058-FPM-RC-XX-DR-X-0600  
 # INDICATES LOCATIONS OF INSPECTION SLOTS, REFER TO DRAWING 03-GRA-0058-FPM-RC-XX-DR-X-0603

LOOSE FITTINGS: PER UNIT

No.	Item	Ref.
-----	------	------

NOTES:

Type.	Insulated Panel	
Length.	8980	+5/ -5
Height.	3055	+5/ -5
Thick.	880	+3 / -3
X to Y (Diag)	9485	+5 / -5
Conc. Weight	16.44(t)	
Total Weight	16.53(t)	
Volume Ext:	2.79 (m <sup>3</sup> )	
Volume Int:	4.36 (m <sup>3</sup> )	
Concrete Ext.	C45/55 Mix: LIT-21	
Concrete Int.	C45/55 Mix: GRA-01	
Exposure Class	Int: XC1 Ext: XC3	
Fire Rating	90 mins	
Lifting Strength.	25N/mm <sup>2</sup>	
Finishes.	NF Power Float; FF Light Etch	
RC Drg. Ref.	03-GRA-0058-IP-3010-RC	
Ins Drg. Ref.	03-GRA-0058-IP-3010-INS	
Bricks/Reckli Ref.	Reckli: See BR, Bricks: N/A	
Cover.	Refer to RC Drawing	
Casting Bed.	Flat	
Mark.	IP-3010	
Stacking.	Vertical	

Level	Quantity
4	1
5	1
Total	2

ENCAST ITEMS: PER UNIT

No.	Item	Ref.
16	M24 Crosspin Socket	SSSCP24100 SS
14	VS-Loop-100	BGW-CL-100
14	VS-Loop-80	BGW-CL-80
8	Spherical Head Anchor	SAP0075120
6	CSS150 ARC	VERTICAL 1598.0mm
5	Well Void	WVV11555
5	M16 Crosspin Socket	SSSCP1675
4	Sapphire Type 2	Sapphire Type 2
4	Plenum Type 3 - 680mm	RAL 8017 Chocolate
4	CSS150 ARC	HORIZONTAL 2305.0mm
4	RD52 Transport Anchor	67M52GK
2	CSS150 ARC	HORIZONTAL 2285.0mm
1	Conduit NoteJ1	NoteJ1
1	Conduit NoteF1+2	NoteF1+2
1	Conduit NoteE1	NoteE1
1	Lightning Strip	Lightning Strip

▲ = Viewing arrow

Rev	Date	Revision Detail	By	Chk	App
C03	05-04-23	Change Isolinks			KUD OVA MMI
C02	17-03-23	Issued For Manufacture			OVA MMA MMI
C01	09-03-23	Issued For Manufacture			OVA MMA MMI

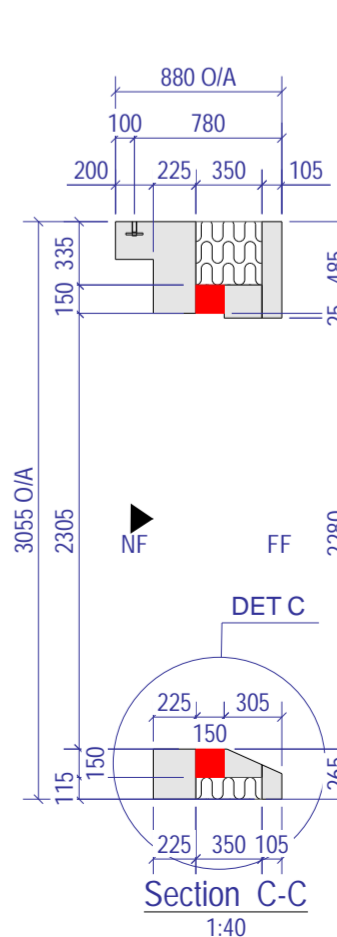
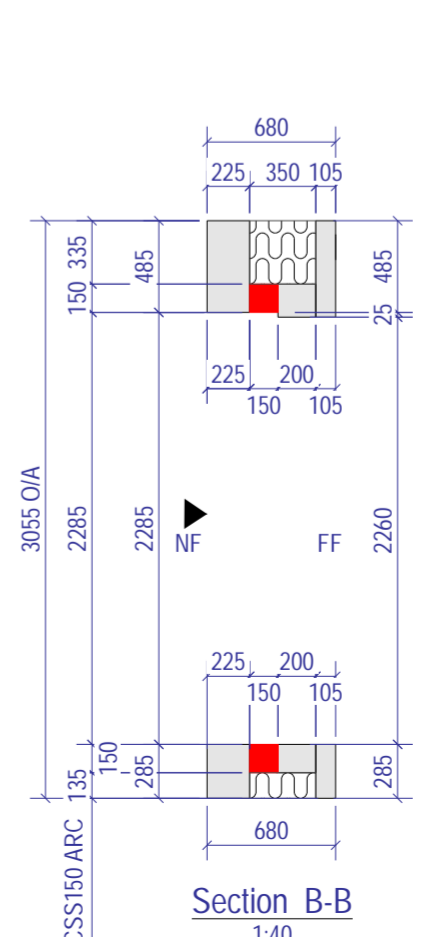
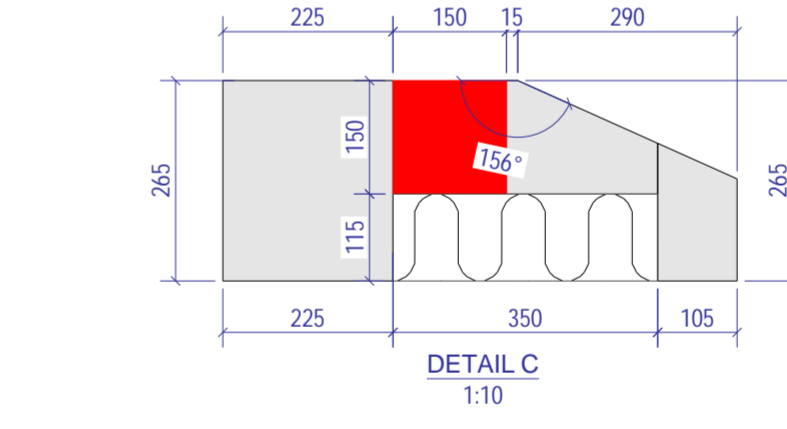
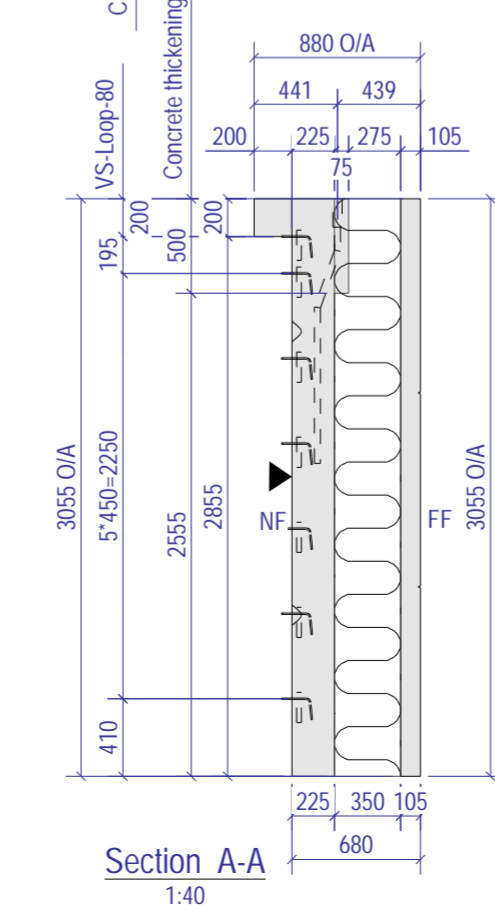
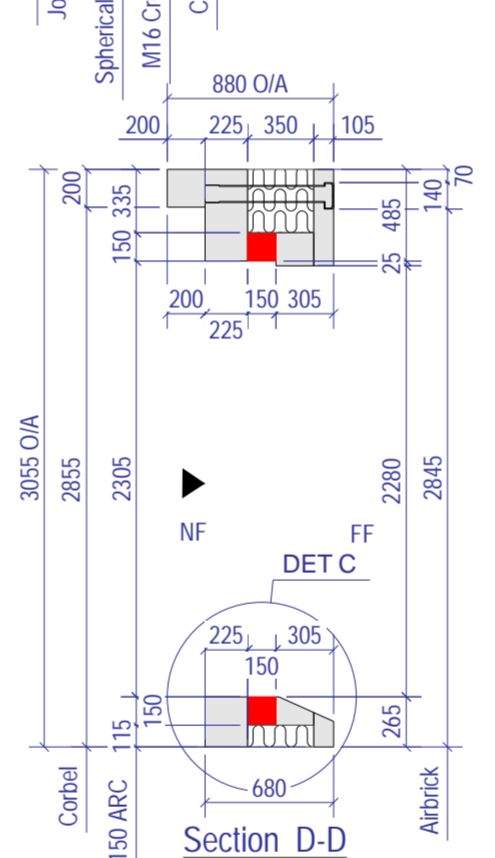
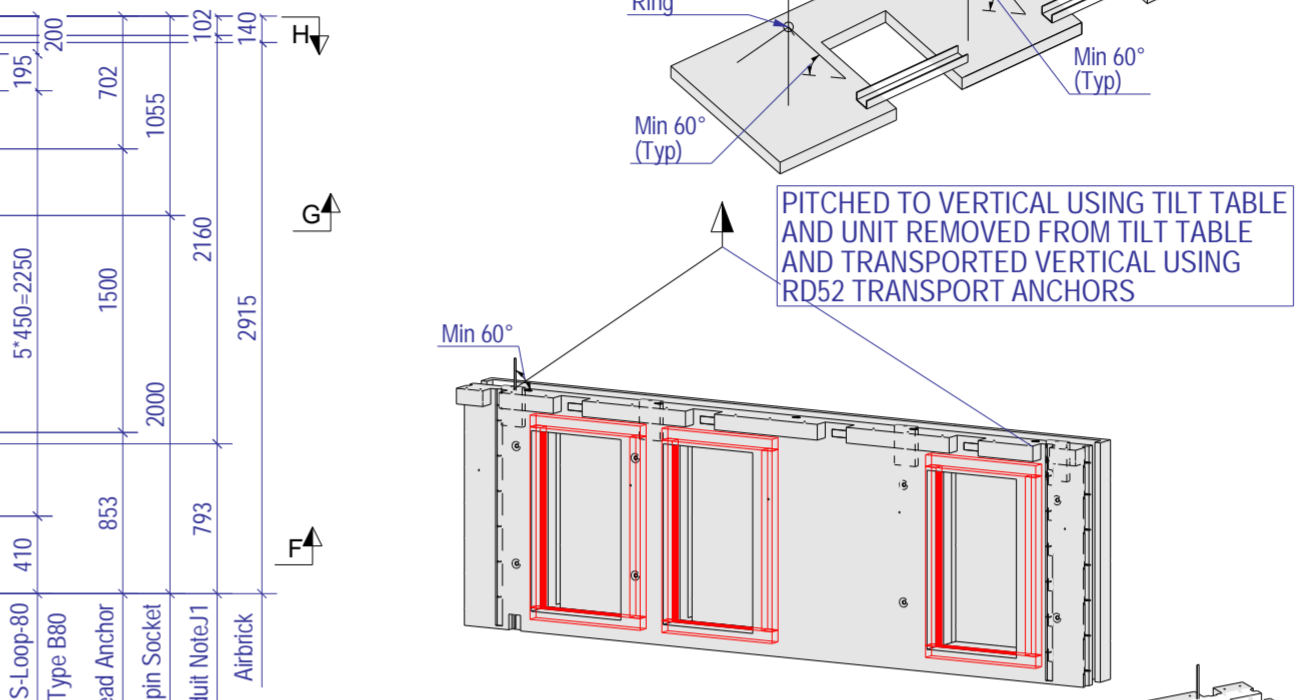
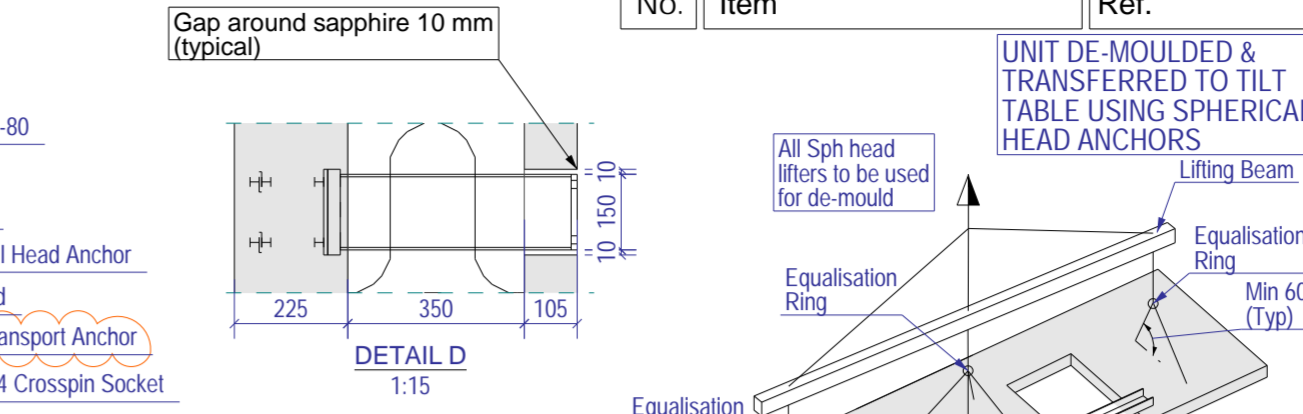
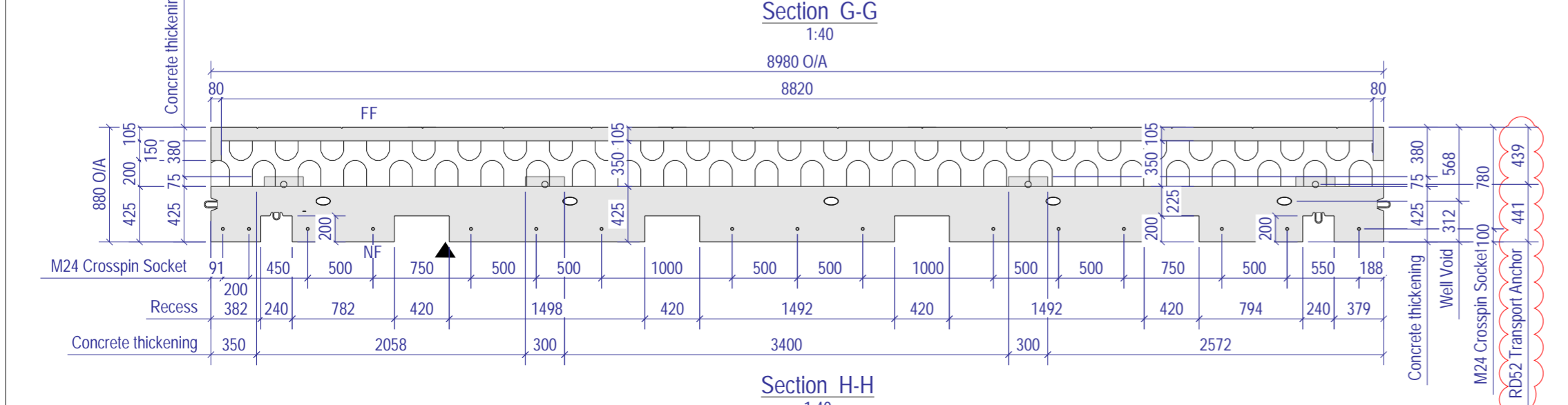
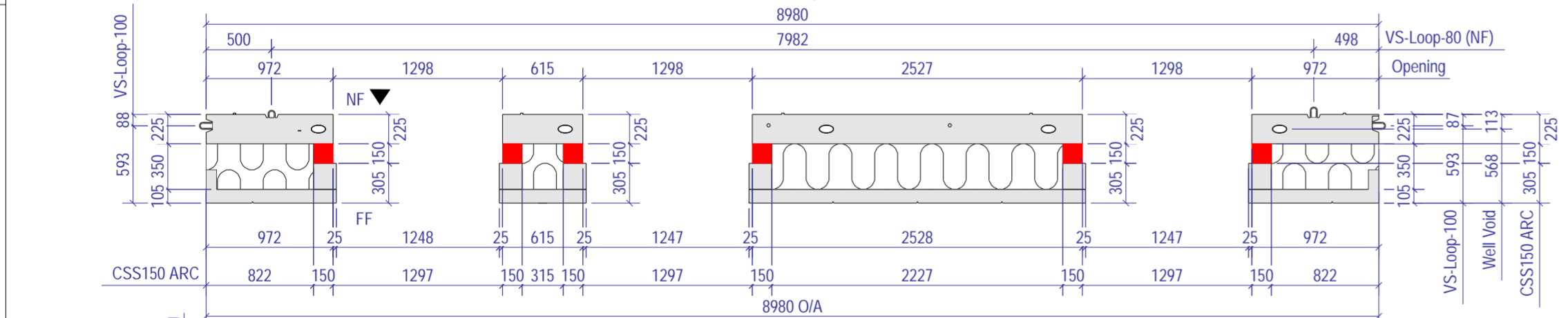
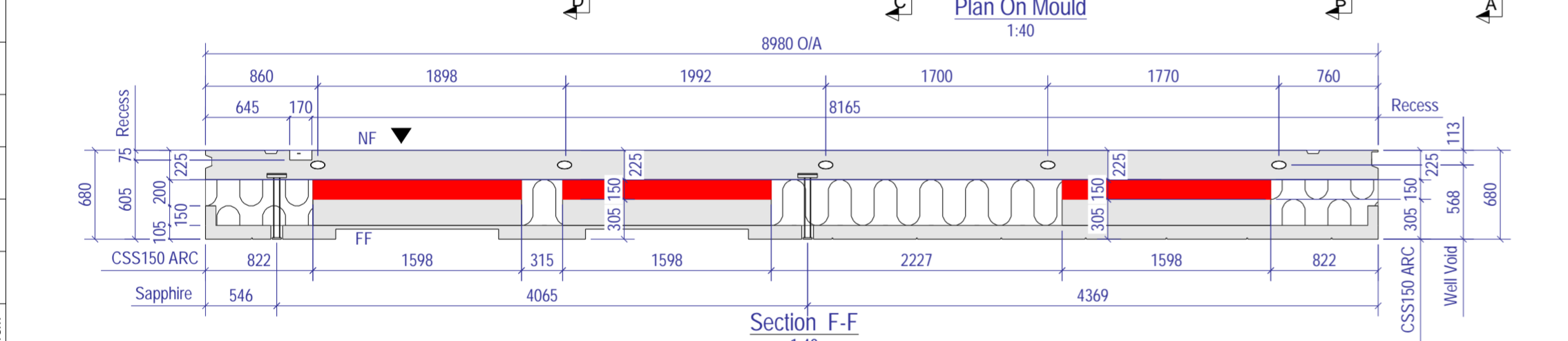
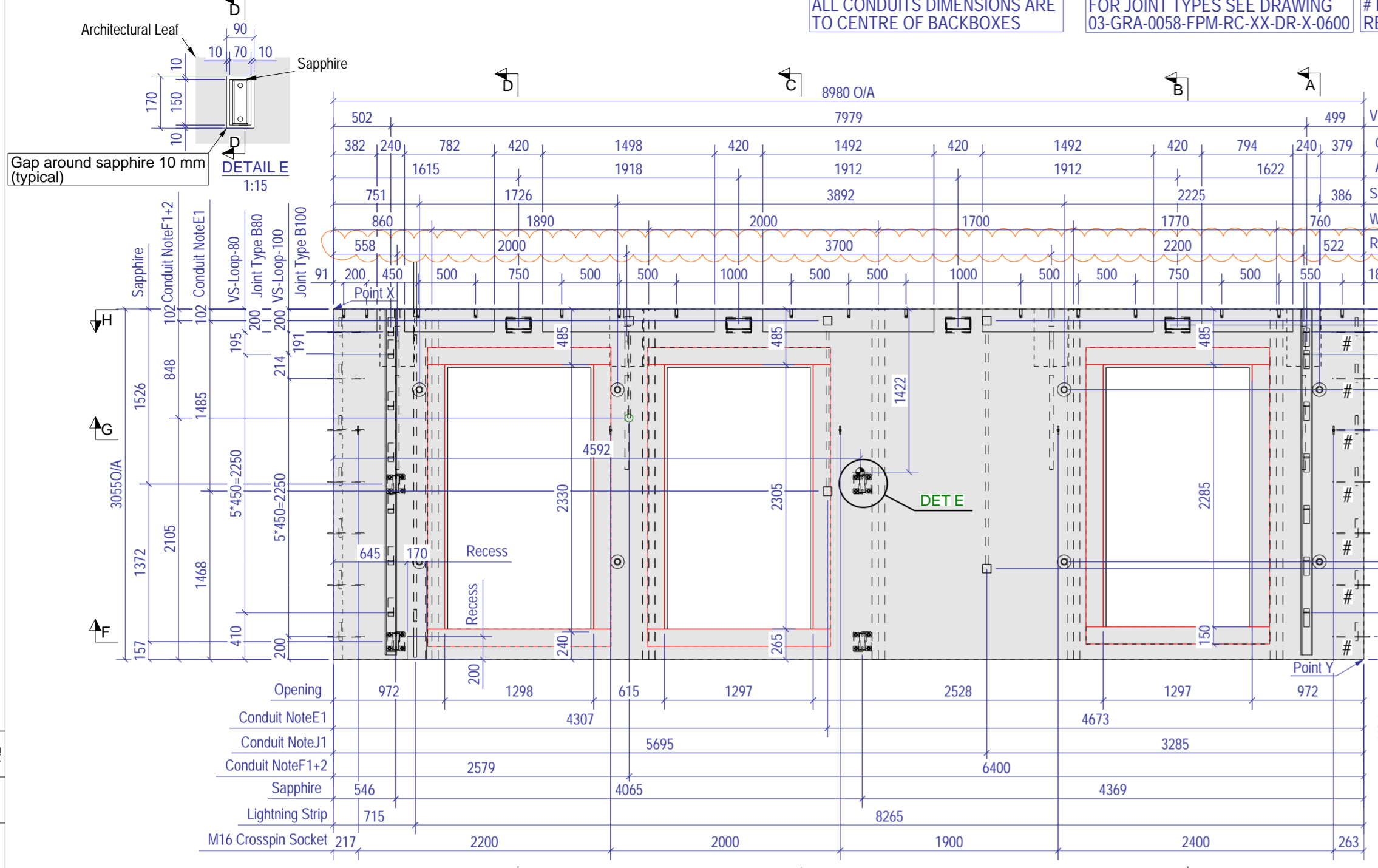
**FP McCann**  
 Grantham,  
 Alma Park Road,  
 Grantham,  
 Lincolnshire,  
 NG31 6SE,  
 Tel: +44 (0)1476 562277  
 www.fpmccann.co.uk

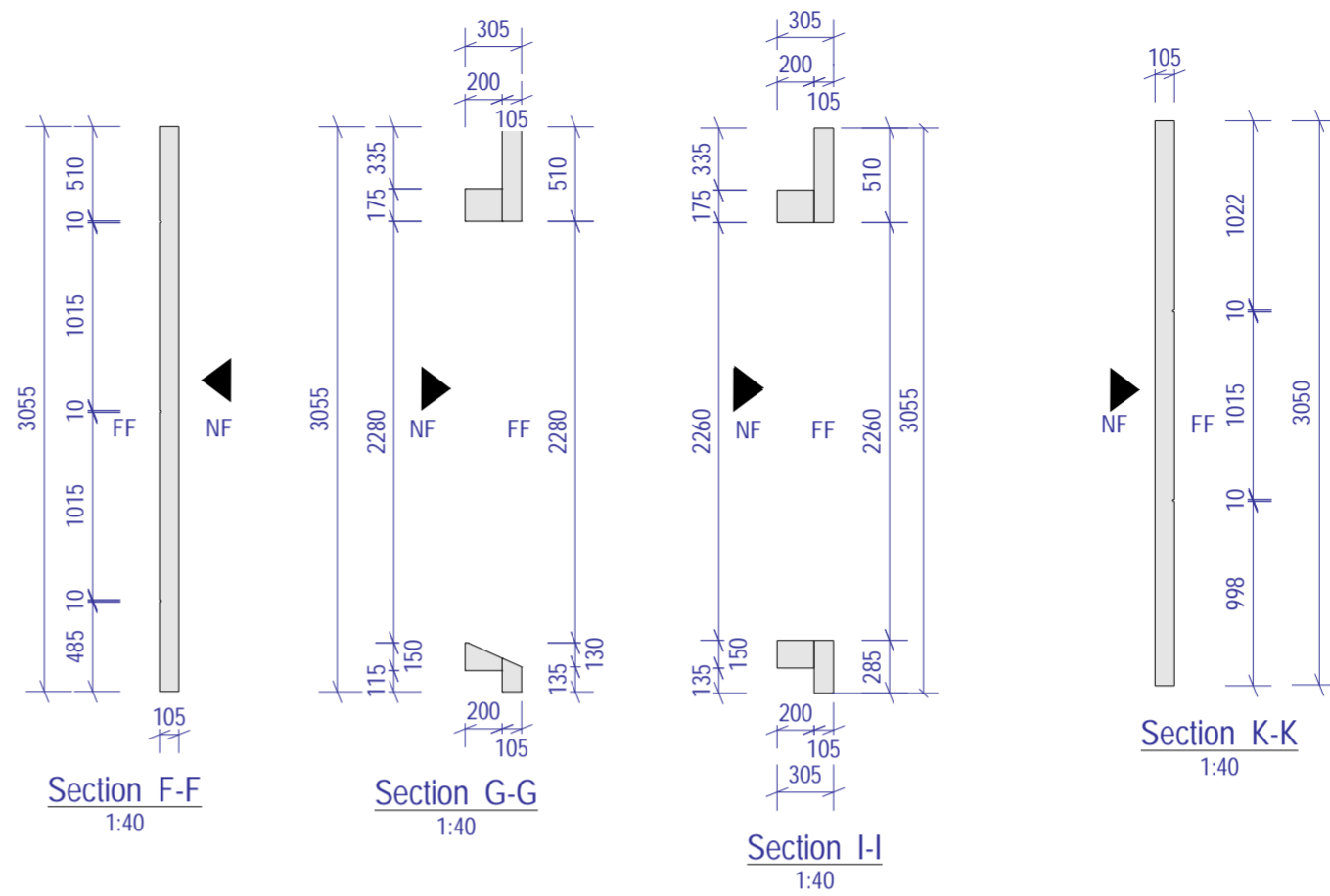
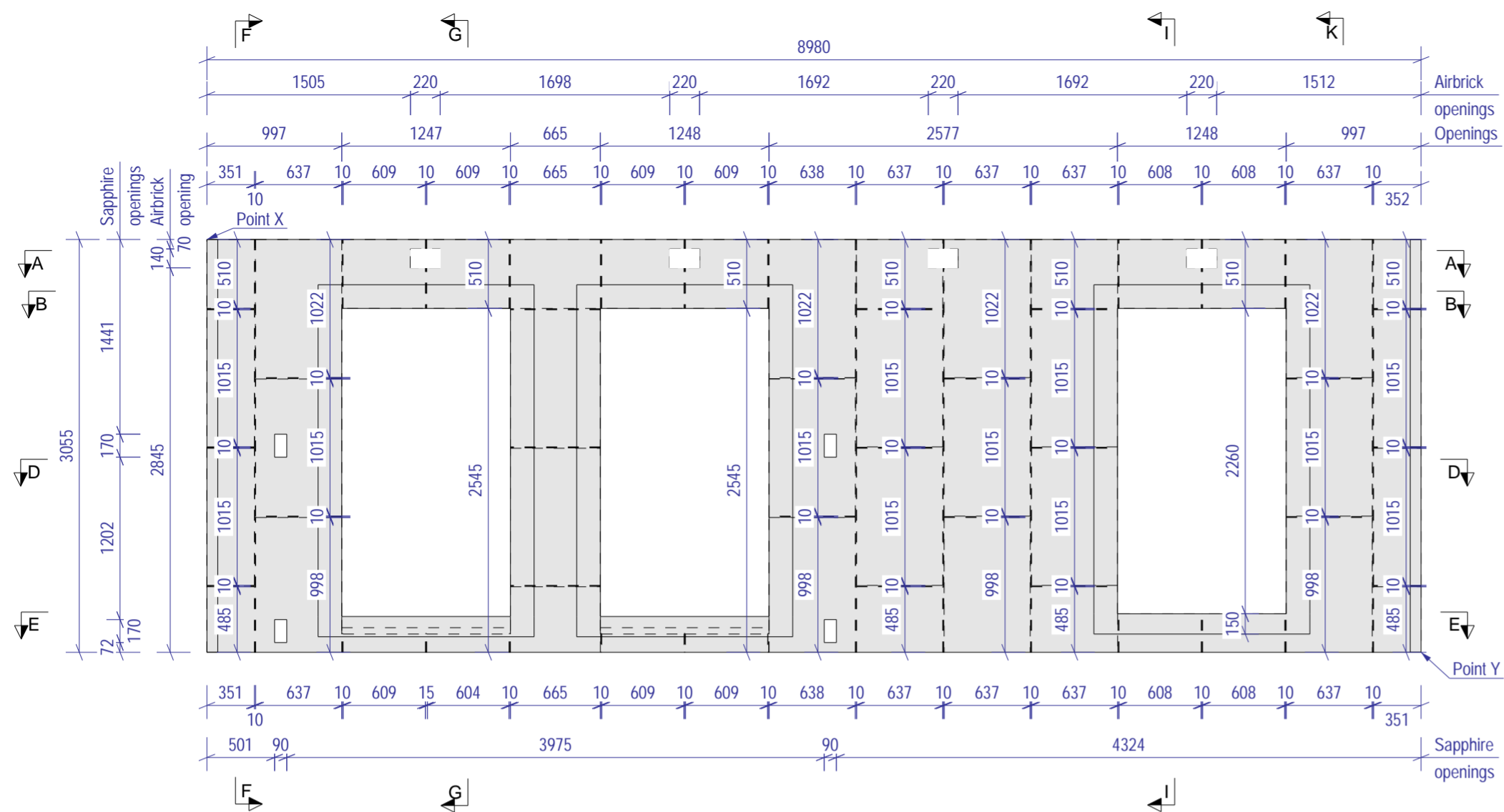
Client: **Hollybrook Homes**  
 Project: **Roneo Corner, Hornchurch**

Title: **GA of Insulated Panel IP-3010**

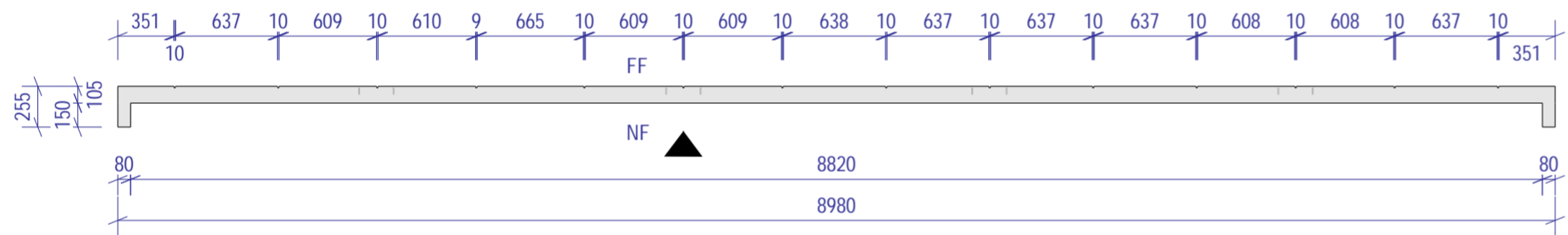
Scale: As Shown Status: Issued for Manufacture - A  
 Date: 08-03-23

Drawn: KUD Checked: OVA Approved: MMI  
 Drawing No: 03-GRA-0058-IP-3010-GA Rev: C03

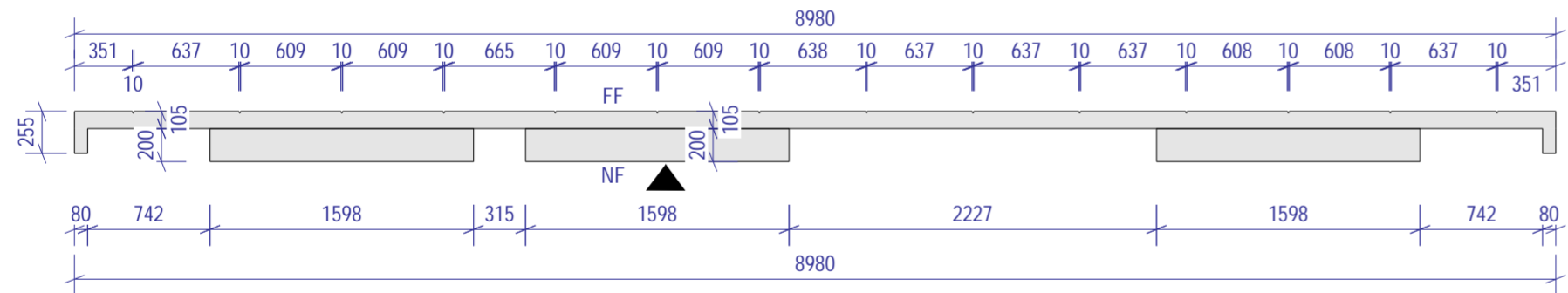




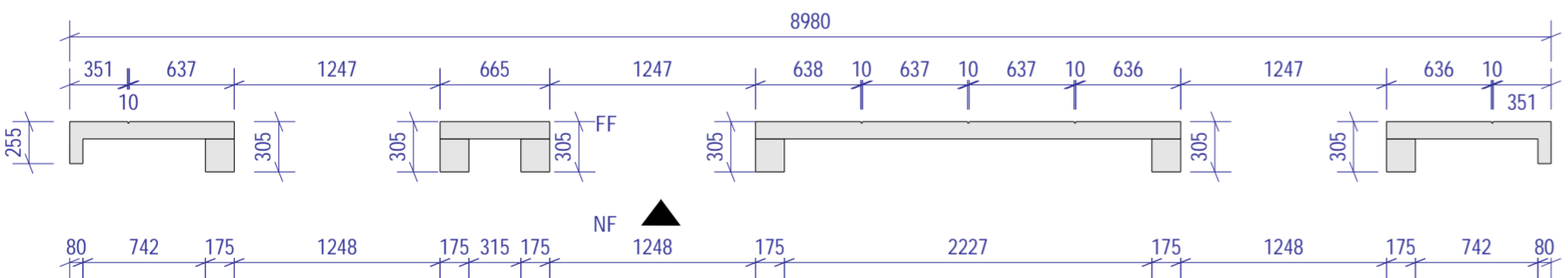
Plan On Mould  
1:40



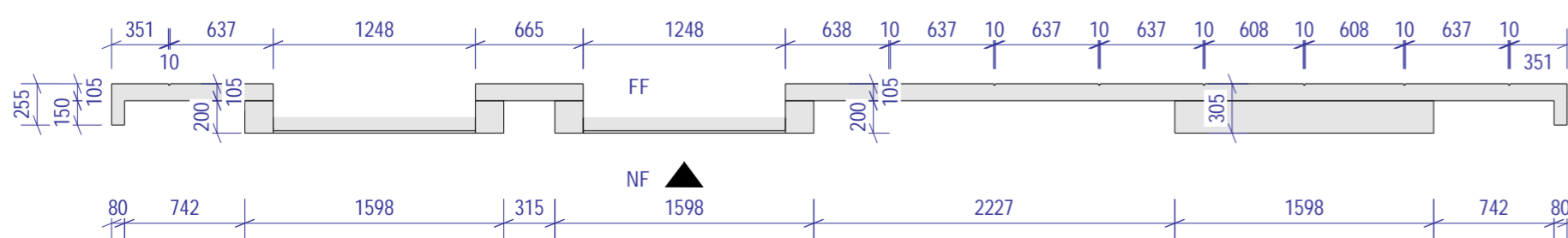
Section A-A  
1:40



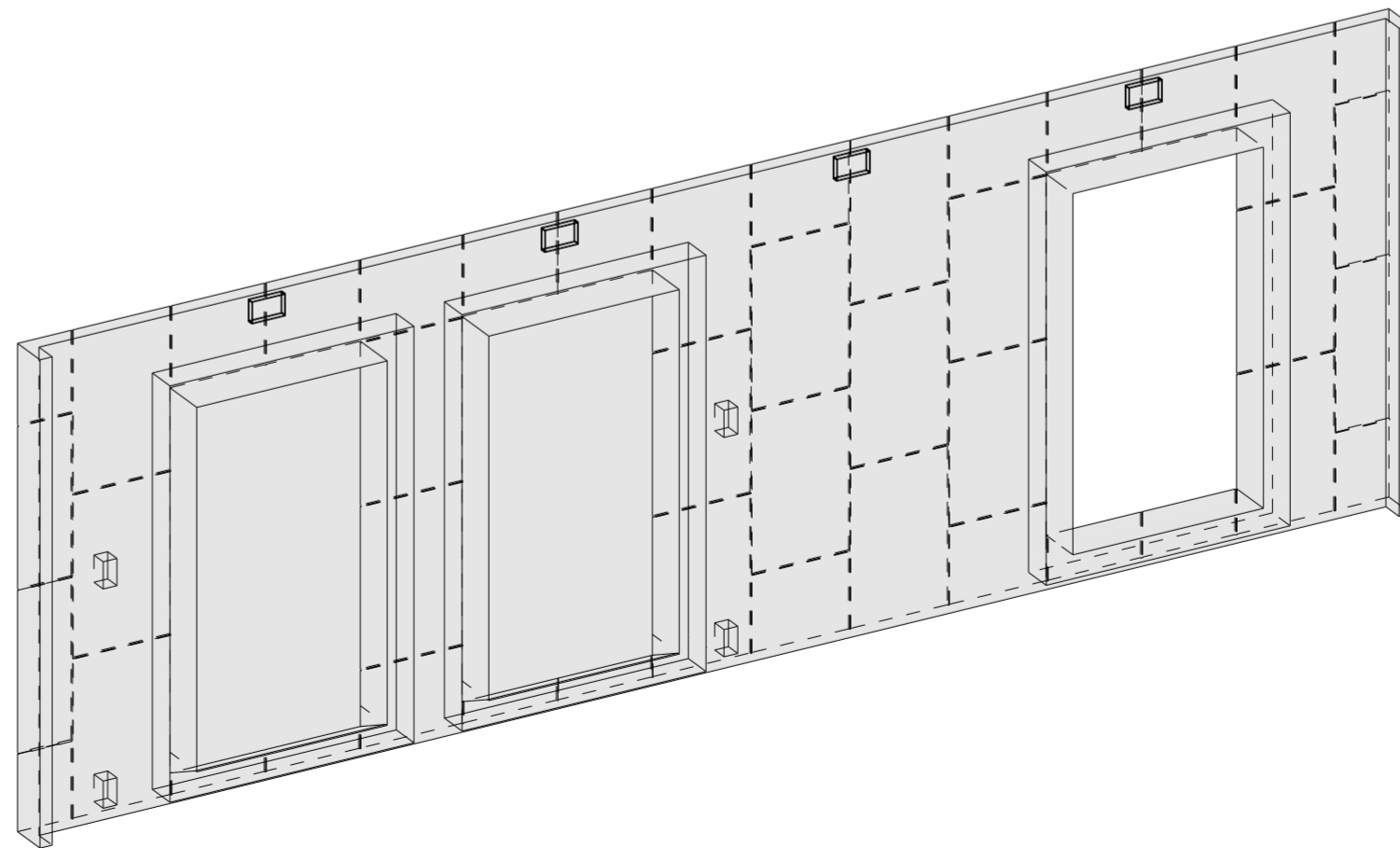
Section B-B  
1:40



Section D-D  
1:40



Section E-E  
1:40



NOTES:

Type.	Insulated Panel
Mark.	IP-3010
GA Drg. Ref.	03-GRA-0058-IP-3010-GA
Quantity.	2
Cover	25mm Nominal, (20mm Minimum)

- Reinforcement (500B or C) to BS4449.
- Scheduling, dimensioning, bending and cutting to BS8666.
- Cage to be tack welded and/or tied with 17 gauge annealed tying wire.

All joints in brickwork 10mm nominal (unless noted otherwise)  
Raked pointing required (unless noted otherwise)

Rev	Date	Revision Detail	By	Chk	App
C03	05-04-23	Change Isolinks	KUD	OVA	MMI
C02	17-03-23	Issued For Manufacture	OVA	MMA	MMI
C01	09-03-23	Issued For Manufacture	OVA	MMA	MMI

**FP McCann**  
Byley, King's Lane, Byley, Middlewich, Cheshire CW11 9NB.  
Tel: +44 (0)1606 843500 www.fpmccann.co.uk

**FP McCann**  
Grantham, Alma Park Road, Grantham, Lincolnshire, NG31 5SE.  
Tel: +44 (0)1476 562277 www.fpmccann.co.uk

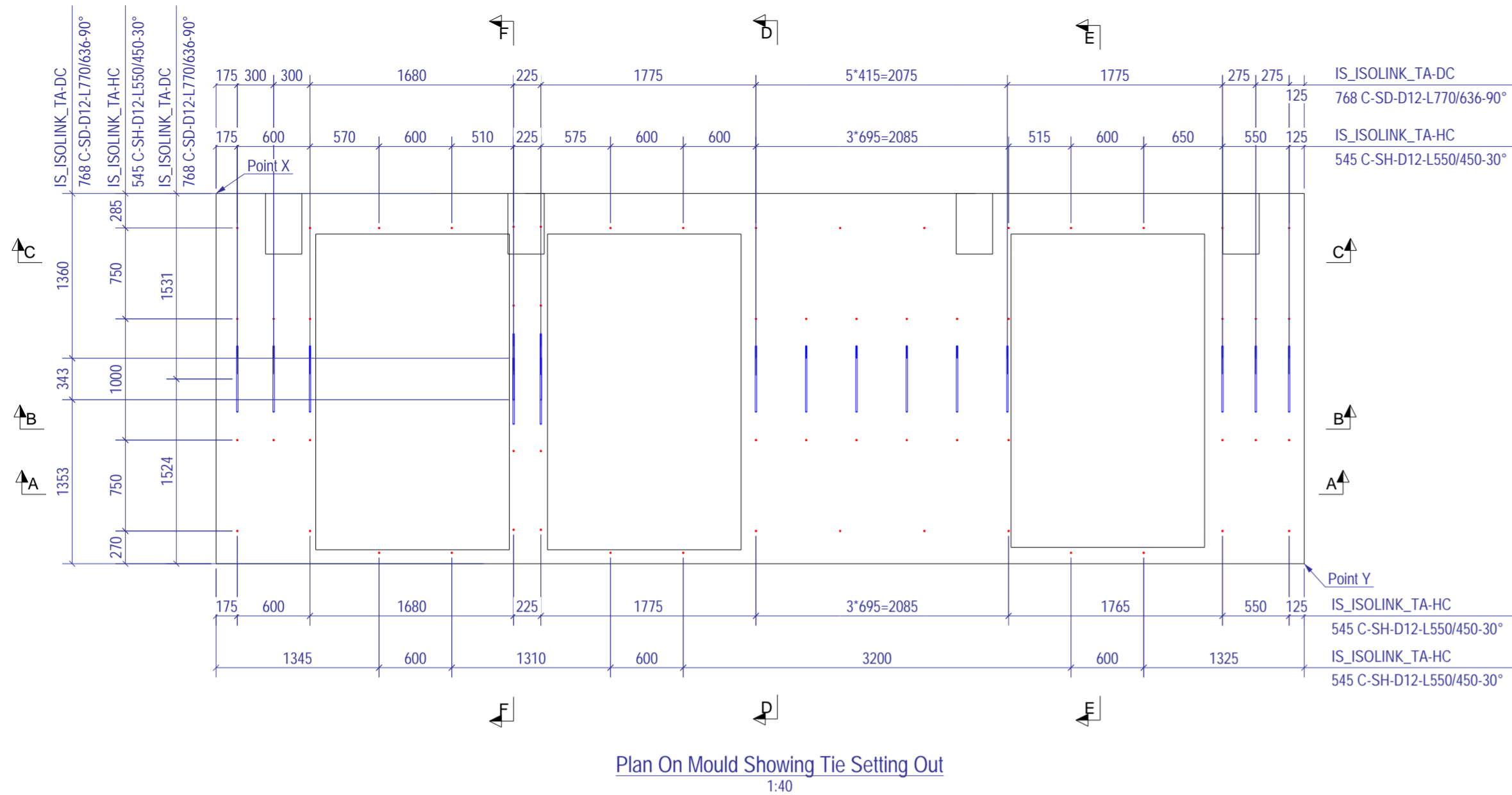
Client: **Hollybrook Homes**

Project: **Roneo Corner, Hornchurch**

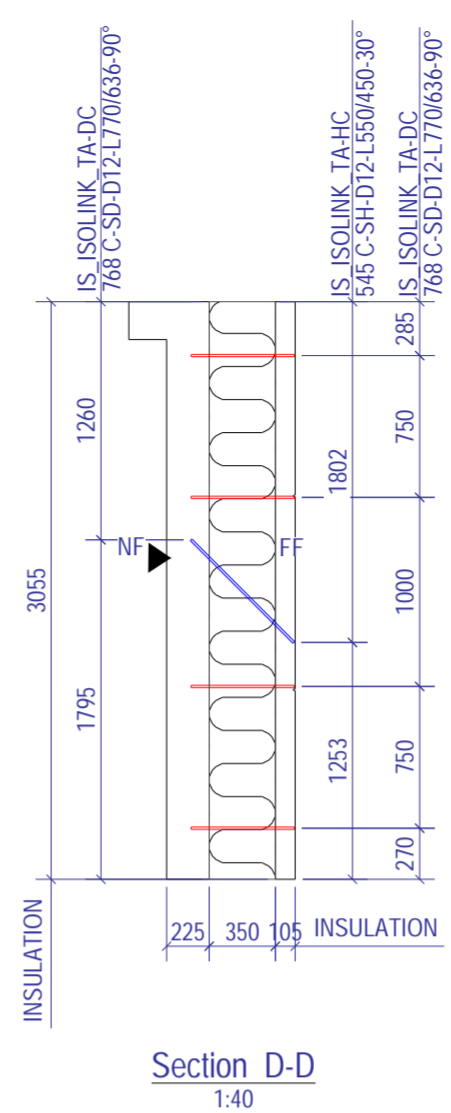
Title: **BR of Insulated Panel IP-3010**

Scale: As Shown Status: Issued for Manufacture - A

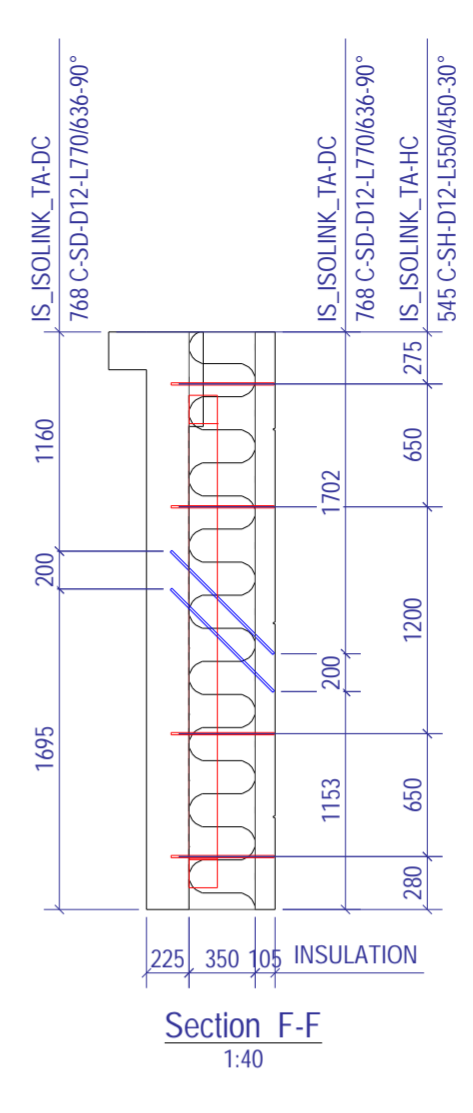
Drawn: KUD Checked: OVA Approved: MMI  
Drawing No: 03-GRA-0058-IP-3010-BR Rev: C03



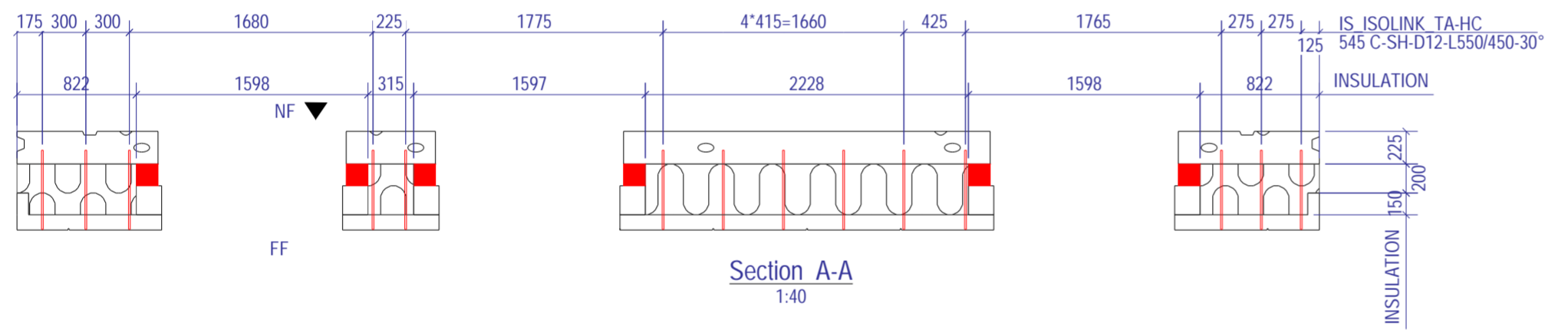
Plan On Mould Showing Tie Setting Out  
1:40



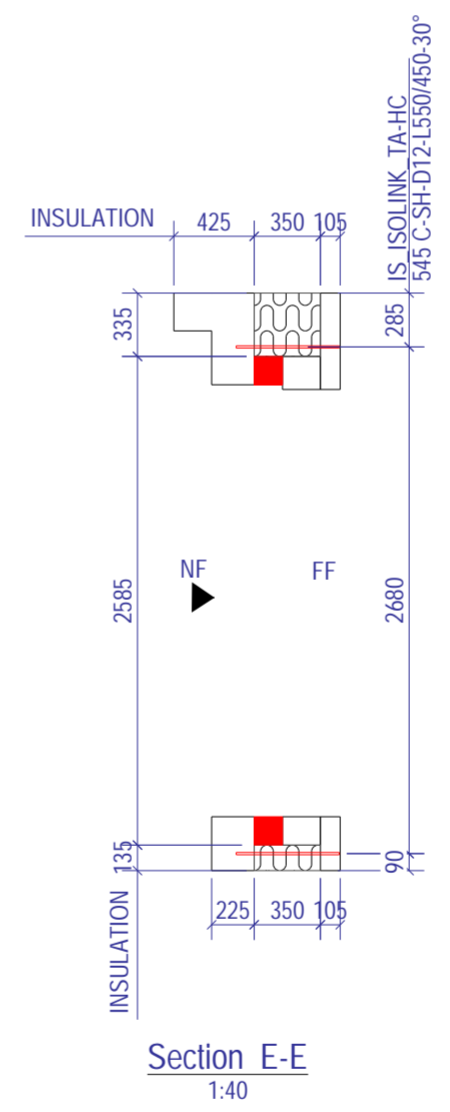
Section D-D  
1:40



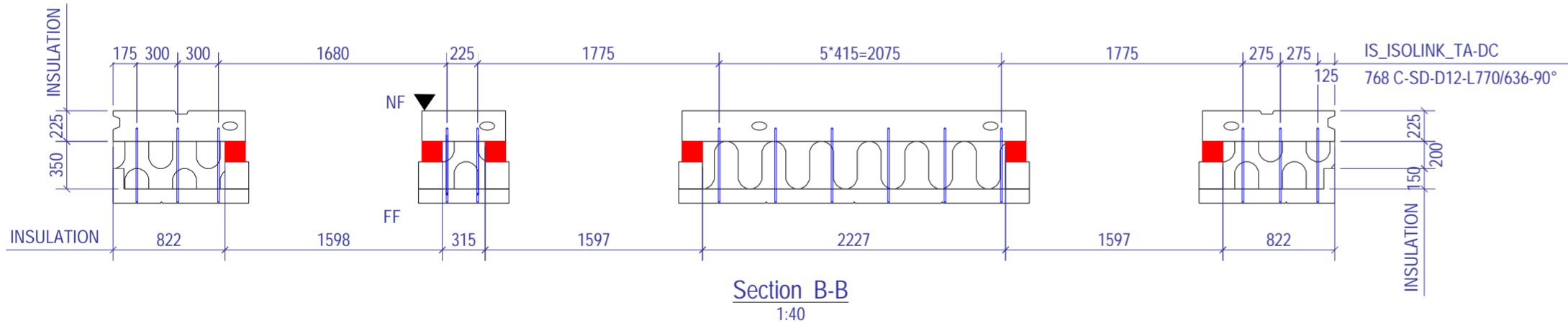
Section F-F  
1:40



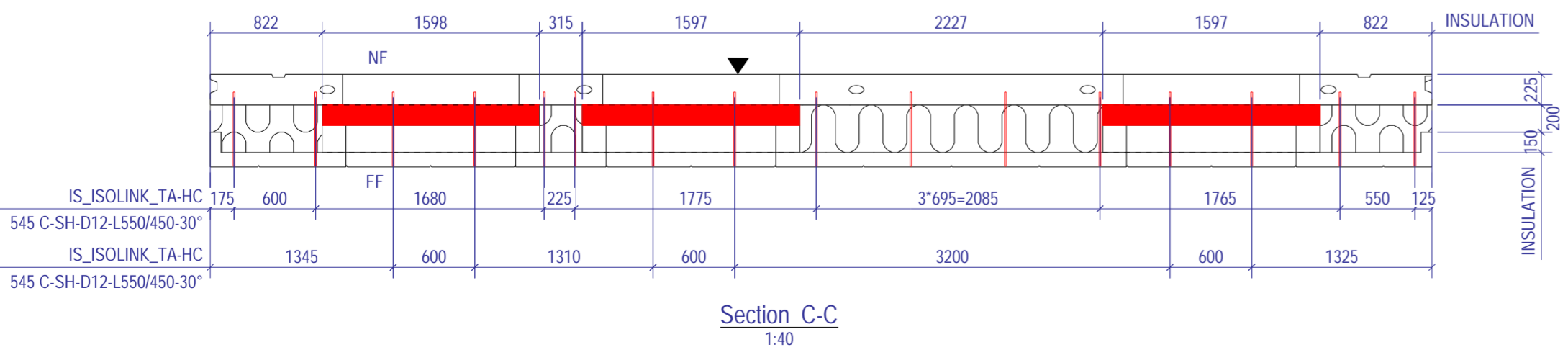
Section A-A  
1:40



Section E-E  
1:40



Section B-B  
1:40



Section C-C  
1:40

NOTES:

Type.	Insulated Panel
Mark.	IP-3010
GA Drg. Ref.	03-GRA-0058-IP-3010-GA
Quantity.	2
Cover	25mm Nominal, (20mm Minimum)

- Reinforcement (500B or C) to BS4449.
- Scheduling, dimensioning, bending and cutting to BS8666.
- Cage to be tack welded and/or tied with 17 gauge annealed tying wire.

TIES / FIRE: PER UNIT

No.	Item	Ref.
60	IS_ISOLINK_TA-HC	C-SH-D12-L550/450-30°
16	IS_ISOLINK_TA-DC	C-SD-D12-L770/636-90°

▲ = Viewing arrow

C03	05-04-23	Change Isolinks	KUD	OVA	MMI
C02	17-03-23	Issued For Manufacture	OVA	MMA	MMI
C01	09-03-23	Issued For Manufacture	OVA	MMA	MMI

Rev	Date	Revision Detail	By	Chk	App

<b>MC</b> fpmccann	FP McCann Byley, King's Lane, Byley, Middleswich, Cheshire CW15 9NB. Tel: +44 (0)1606 843500 www.fpmccann.co.uk	FP McCann Grantham, Alma Park Road, Grantham, Lincolnshire, NG31 5SE. Tel: +44 (0)1476 562277 www.fpmccann.co.uk
-----------------------	--	---

Client: Hollybrook Homes

Project: Roneo Corner, Hornchurch

Title: INS of Insulated Panel IP-3010

Scale: As Shown      Status: Issued for Manufacture - A

Date: 09-03-23

Drawn: KUD      Checked: OVA      Approved: MMI

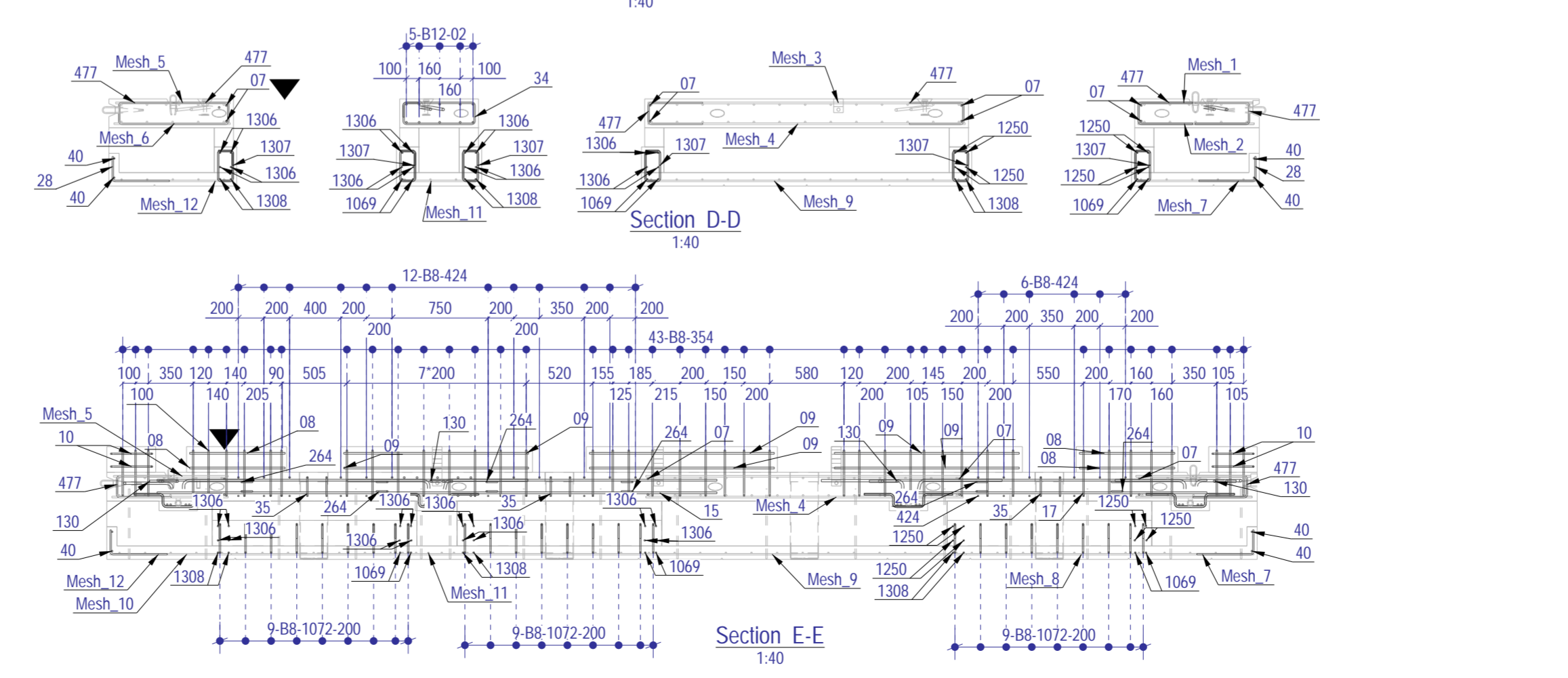
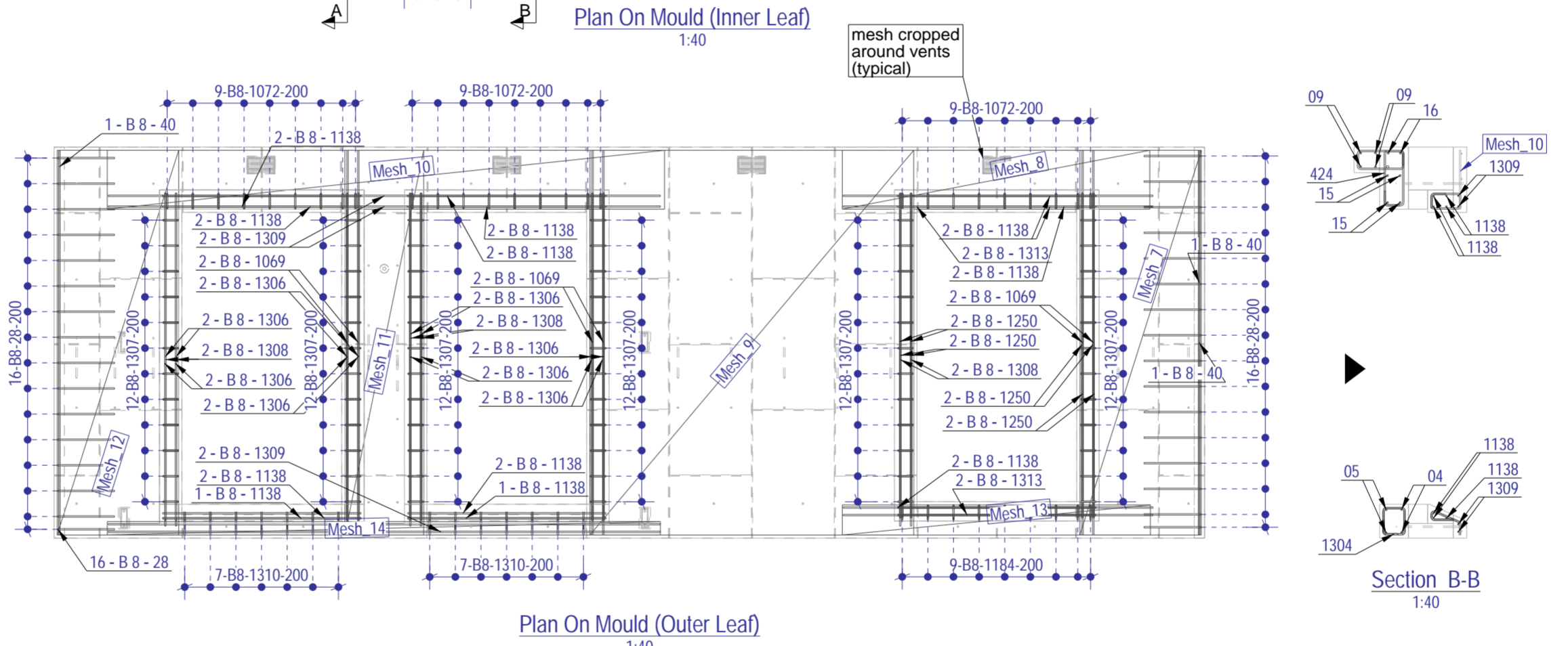
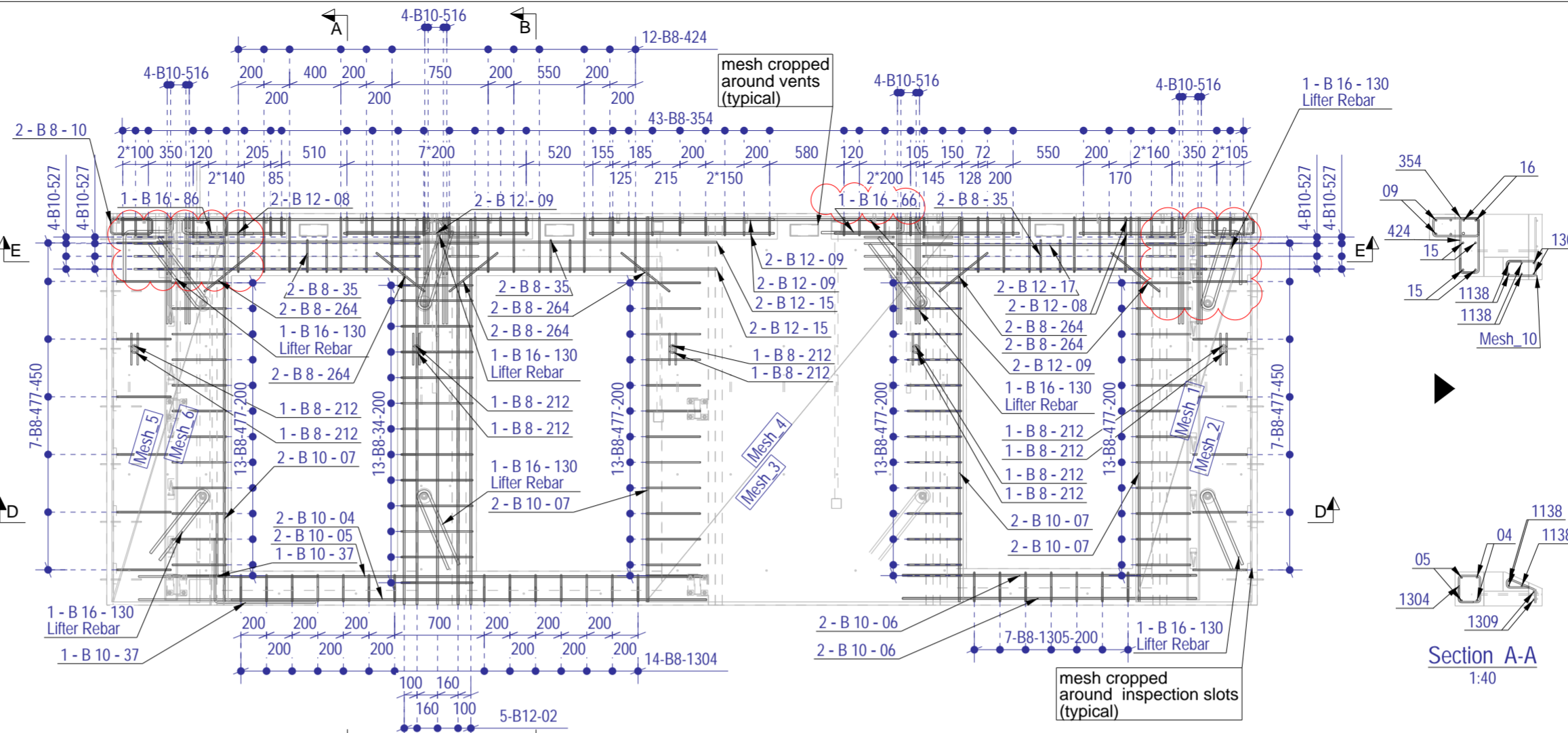
Drawing No: 03-GRA-0058-IP-3010-INS      Rev: C03

Bar Mark	Type & Size	No. of members	No. per member	Total No.	Shape Code	Lgh of each bar #	a*	b*	c*	d*	e*	r	kg/bar	kg/all
130	B 16	2	8	16	13	1325	650	110	650				2.1	33.8
212	B 8	2	10	20	13	325	155	60	155				0.1	2.6
264	B 8	2	12	24	00	475	480						0.2	4.6
354	B 8	2	43	86	51	1175	360	150	115	115			0.5	39.4
424	B 8	2	18	36	51	1325	435	155	115	115			0.5	18.7
477	B 8	2	66	132	21	975	425	175	425				1.4	51.5
1069	B 8	2	6	12	00	3000	3005						0.2	14.2
1072	B 8	2	27	54	51	850	235	125	115	115			0.3	18.2
1138	B 8	2	22	44	00	1525	1545						0.6	26.9
1184	B 8	2	9	18	51	800	235	100	115	115			0.3	5.7
1250	B 8	2	8	16	00	2525	2535						1.0	16.0
1304	B 8	2	14	28	51	925	215	175	115	115			0.4	10.1
1305	B 8	2	7	14	51	950	235	175	115	115			0.4	5.3
1306	B 8	2	16	32	00	2550	2555						1.0	32.3
1307	B 8	2	72	144	51	875	245	125	115	115			0.3	49.6
1308	B 8	2	6	12	00	2600	2600						1.0	12.3
1309	B 8	2	4	8	00	4300	4310						1.7	13.6
1313	B 8	2	4	8	00	2400	2415						1.0	7.6
1310	B 8	2	14	28	99-1310	575							0.2	6.1

02	B 12	2	10	20	00	3000	3005						2.7	53.4
04	B 10	2	2	4	00	4425	4435						2.7	10.9
05	B 10	2	2	4	00	3700	3710						2.3	9.1
06	B 10	2	4	8	00	2275	2295						1.4	11.3
07	B 10	2	8	16	00	3000	3005						1.9	29.6
08	B 12	2	8	16	00	725	740						0.7	10.6
09	B 12	2	12	24	00	1425	1440						1.3	30.7
10	B 8	2	4	8	51	1050	325	125	115	115			0.4	3.3
15	B 12	2	4	8	00	4350	4370						3.9	31.0
16	B 12	2	2	4	00	8825	8825						7.8	31.4
17	B 12	2	4	8	00	2400	2410						2.1	17.1
28	B 8	2	32	64	11	625	195	445				16	0.2	15.7
34	B 8	2	13	26	51	1625	565	175	115	115			0.6	16.6
35	B 8	2	6	12	51	975	255	155	115	115			0.4	4.5
37	B 10	2	2	4	11	1275	505	790				20	0.8	3.1
40	B 8	2	4	8	00	3000	3005						1.2	9.5
66	B 16	2	2	4	99-66	1775							2.8	11.2
85	B 16	2	1	2	99-85	1775							2.8	5.6
86	B 16	2	1	2	99-86	1775							2.8	5.5
516	B 10	2	16	32	99-516	1175							0.7	22.8
527	B 10	2	16	32	99-527	850							0.5	16.5

Mesh_1	2	1	2	Bespoke Mesh - See Diagram for Details									19.38	38.75
Mesh_2	2	1	2	Bespoke Mesh - See Diagram for Details									17.64	35.28
Mesh_3	2	1	2	Bespoke Mesh - See Diagram for Details									46.96	93.91
Mesh_4	2	1	2	Bespoke Mesh - See Diagram for Details									46.96	93.91
Mesh_5	2	1	2	Bespoke Mesh - See Diagram for Details									19.38	38.75
Mesh_6	2	1	2	Bespoke Mesh - See Diagram for Details									17.64	35.28
Mesh_7	2	1	2	Bespoke Mesh - See Diagram for Details									11.92	23.85
Mesh_8	2	1	2	Bespoke Mesh - See Diagram for Details									4.12	8.23
Mesh_9	2	1	2	Bespoke Mesh - See Diagram for Details									31.40	62.81
Mesh_10	2	1	2	Bespoke Mesh - See Diagram for Details									8.24	16.49
Mesh_11	2	1	2	Bespoke Mesh - See Diagram for Details									7.66	15.33
Mesh_12	2	1	2	Bespoke Mesh - See Diagram for Details									11.93	23.86
Mesh_13	2	1	2	Bespoke Mesh - See Diagram for Details									2.55	5.10
Mesh_14	2	1	2	Bespoke Mesh - See Diagram for Details									4.12	8.23

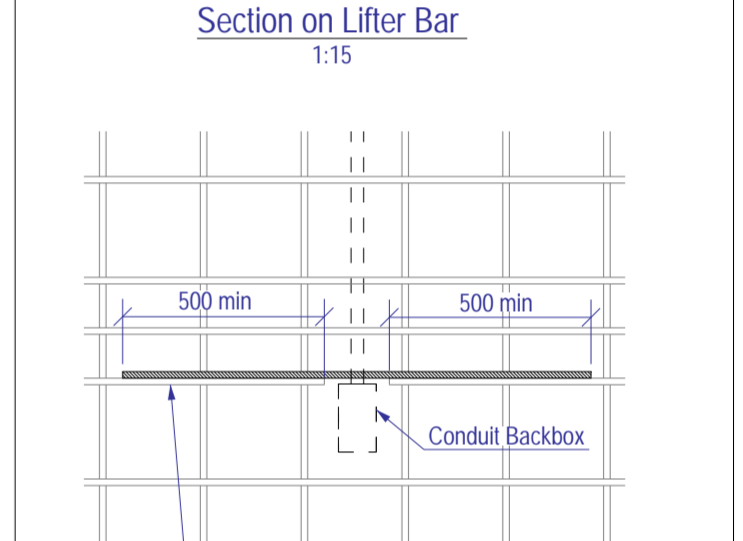
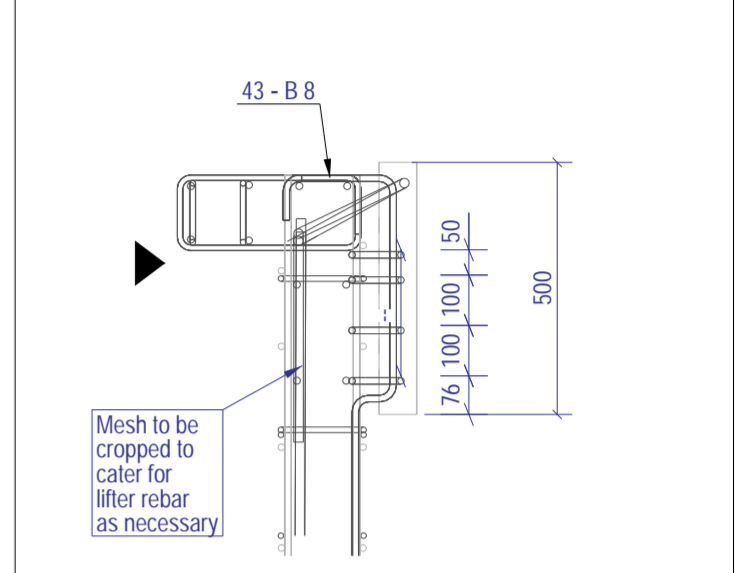
This Schedule complies with the requirements of BS 8666:2005 \* Specified in multiples of 5mm # Specified in multiples of 25mm  
 Total Rebar Weight (kg) 1218.11



NOTES:

Type:	Insulated Panel
Mark:	IP-3010
GA Drg. Ref.:	03-GRA-0058-IP-3010-GA
Quantity:	2
Cover:	25mm Nominal, (20mm Minimum)

- Reinforcement (500B or C) to BS4449.
- Scheduling, dimensioning, bending and cutting to BS8666.
- Cage to be tack welded and/or tied with 17 gauge annealed tying wire.



NOTE: VIEW ARROW MUST BE SHOWN ON PANEL

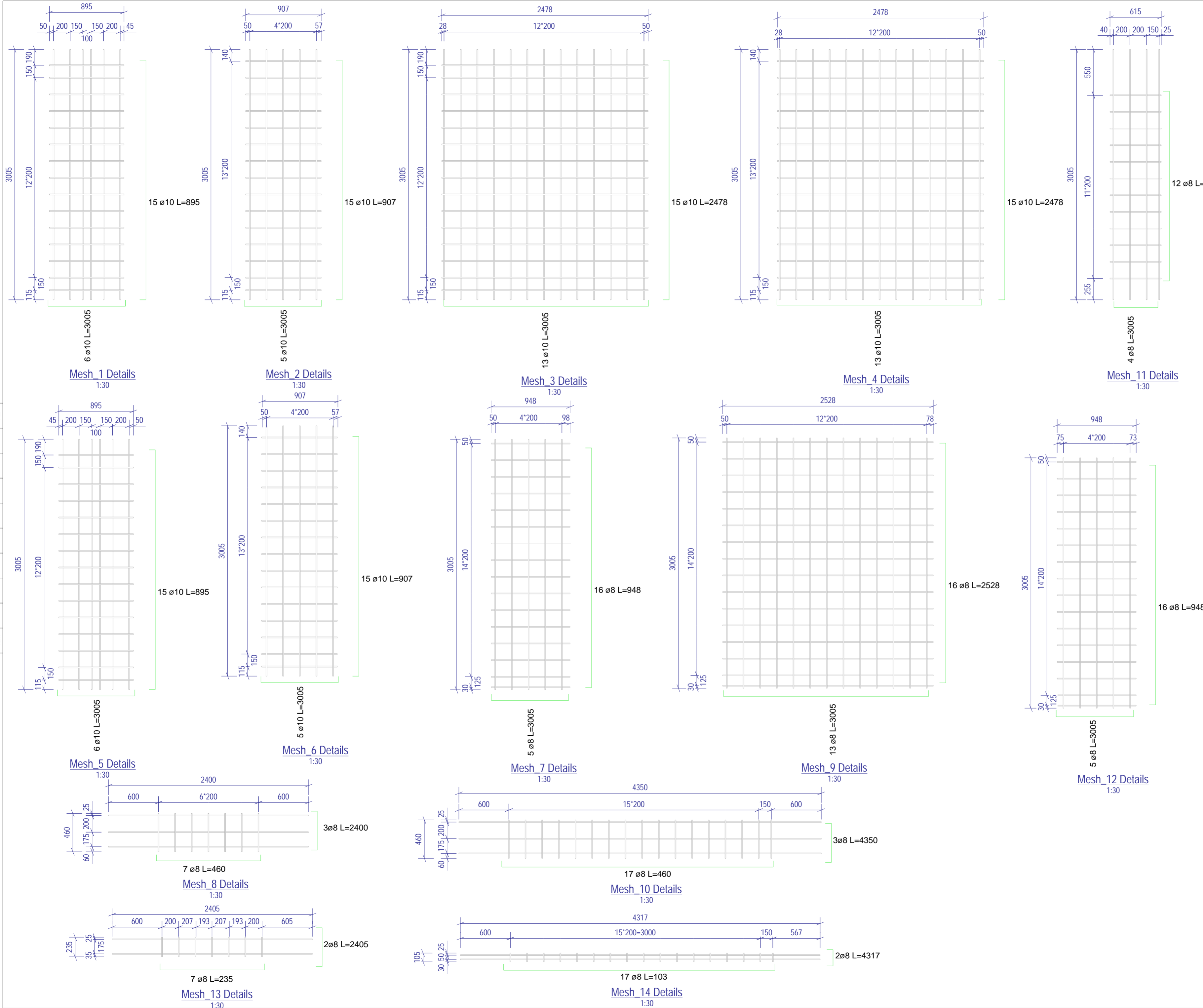
▲ = Viewing arrow

Rev	Date	Revision Detail	By	Chk	App
C03	05-04-23	Change Isolinks	KUD	OVA	MMI
C02	17-03-23	Issued For Manufacture	OVA	MMA	MMI
C01	09-03-23	Issued For Manufacture	OVA	MMA	MMI

FP McCann  
 Byley, King's Lane, Middlewich, Cheshire CW11 9AB  
 Tel: +44 (0)1606 843500 www.fpmccann.co.uk

FP McCann  
 Grantham, Alma Park Road, Grantham, Lincolnshire, NG31 5SE  
 Tel: +44 (0)1476 562277 www.fpmccann.co.uk

Client:	Hollybrook Homes						
Project:	Roneo Corner, Hornchurch						
Title:	RC1 of Insulated Panel IP-3010						
Scale:	As Shown	Status:	Issued for Manufacture - A				
Date:	09-03-23	Drawn:	KUD	Checked:	OVA	Approved:	MMI
Drawing No.:	03-GRA-0058-IP-3010-RC1	Rev:	C03				



NOTES:

Type.	Insulated Panel
Mark.	IP-3010
GA Drg. Ref.	03-GRA-0058-IP-3010-GA
Quantity.	2
Cover	25mm Nominal, (20mm Minimum)

- Reinforcement (500B or C) to BS4449.
- Scheduling, dimensioning, bending and cutting to BS8666.
- Cage to be tack welded and/or tied with 17 gauge annealed tying wire.

Rev	Date	Revision Detail	By	Chk	App
C03	05-04-23	Change Isolinks	KUD	OVA	MMI
C02	17-03-23	Issued For Manufacture	OVA	MMA	MMI
C01	09-03-23	Issued For Manufacture	OVA	MMA	MMI

<b>MC</b> fpmccann	FP McCann Byley, King's Lane, Byley, Middlewich, Cheshire CW11 9AB. Tel: +44 (0)1606 843500 www.fpmccann.co.uk	FP McCann Grantham, Alma Park Road, Grantham, Lincolnshire, NG31 5SE. Tel: +44 (0)1476 562277 www.fpmccann.co.uk
	<input type="checkbox"/> <input type="checkbox"/>	

Client: **Hollybrook Homes**

Project: **Roneo Corner, Hornchurch**

Title: **RC2 of Insulated Panel IP-3010**

Scale: As Shown  
Date: 09-03-23  
Status: Issued for Manufacture - A

Drawn: KUD  
Checked: OVA  
Approved: MMI  
Drawing No: 03-GRA-0058-IP-3010-RC2  
Rev: C03

A2  
1cm