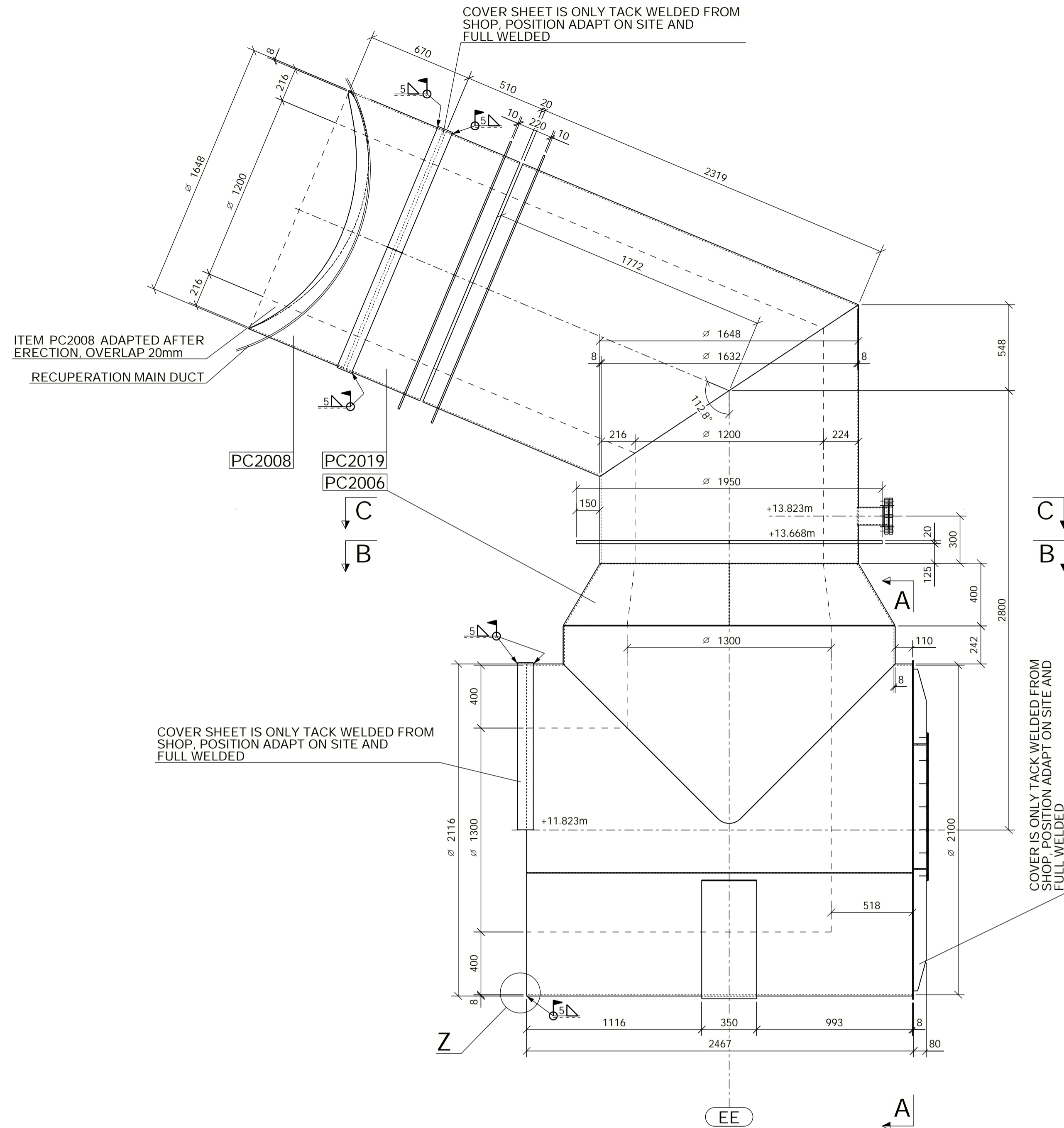
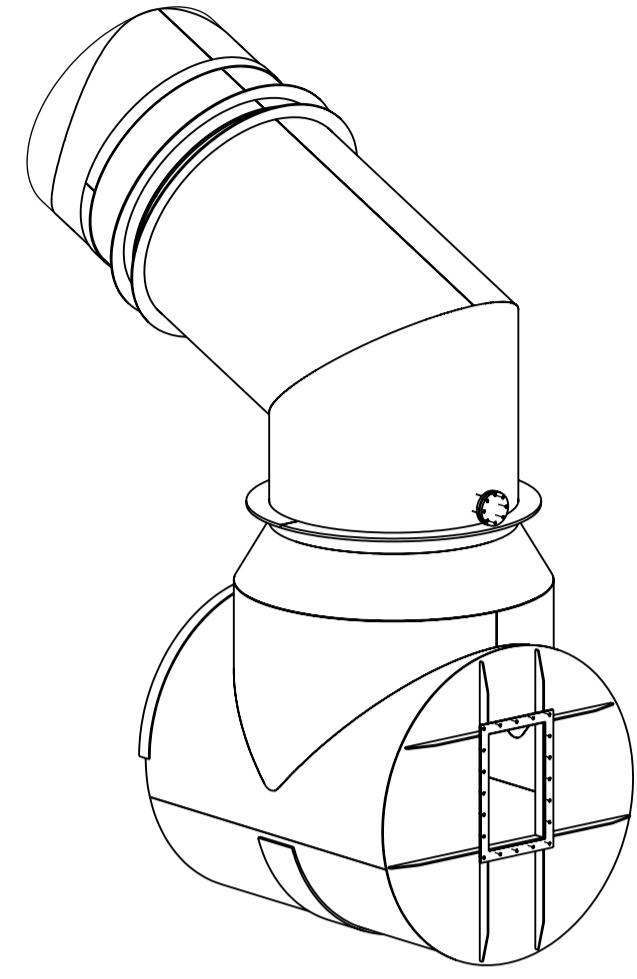


DOWN COMER 1
DOWN COMER 2 MIRRORED

ISO
(1:50)



REFERENCE LIST:

DRAWING / DOCUMENT No.	DESCRIPTION
903254_PPG01_PH02_MTA07_05421_OU10775001	PLATE WORK LOT 2/ITEMS T2005 - 2007
903254_PPG01_PH02_MTA07_05517_OU10775097	PLATE WORK LOT 2/ITEMS PC2006
903254_PPG01_PH02_MTA07_05519_OU10775099	PLATE WORK LOT 2/ITEMS PC2008 - 2009
903254_PPG01_PH02_MTA07_05528_OU10775108	PLATE WORK LOT 2/ITEMS PC2018-2036

COMBUSTION CHAMBER AND SUPPORT FOR DOWN COMER PORTS HAVE TO BE MANUFACTURED AND MARKED TOGETHER
WELDINGS SEAMS ON THE INSIDE OF DOWN COMER HAVE TO BE SCATTERED

STEEL STRUCTURE EXECUTION CLASS: EXC2
TOLERANCES ACCORDING TO DIN EN ISO 13920 CLASS B,F

WELDING:
- UNLESS INDICATED OTHERWISE, ALL WELDS ARE MINIMUM 4 mm AND ARE CONTINUOUS
- ALL GIVEN WELDS DIMENSIONS ARE EUROPEAN WAY: THROAT DIMENSION,
- FOR LEG SIZE MULTIPLY THROAT DIMENSION BY 1,42
- SYMBOLIC REPRESENTATION ON DRAWING TO ISO 2553
- JOINT PREPARATION ACCORDING TO EN 9692-1 AND EN 1708

DERUSTING AND COATING ACCORDING TO:
- 903254_ZZZ01_ZZ01_BEC01_00004_OU10198090 - PAINTING AND CONSERVATION
- 903254_ZZZ01_ZZ01_BEC01_00007_OU10200593 - PAINTING SYSTEMS

LIST OF MATERIAL:

ITEM	QTY	DESCRIPTION	NET WEIGHT OF ITEM (kg)	WEIGHT OF ITEM (kg)	SUM OF WEIGHT (kg)
	1	PACKING CORD 5mm thk x70 (l= -2.9m, CLASS. TEMP. 1100°C)			
PC2006	1	WORKSHOP ASSEMBLY		2673.1	2673.1
PC2008	1	WORKSHOP ASSEMBLY		226.5	226.5
PC2019	1	WORKSHOP ASSEMBLY		224.4	224.4
T2005	1	WORKSHOP ASSEMBLY		15.6	15.6
TOTAL WEIGHT (kg):				3199.6	3199.6

SCREW	QTY	DESCRIPTION	GRADE	NORM	WEIGHT (kg)
M16x55	20	BOLT SET WITH 1x NUT-ISO 4032	8.8	EN15048/ISO 4017	2.97
	40	WASHERS FOR BOLT M16	200HV	ISO 7089	0.45

