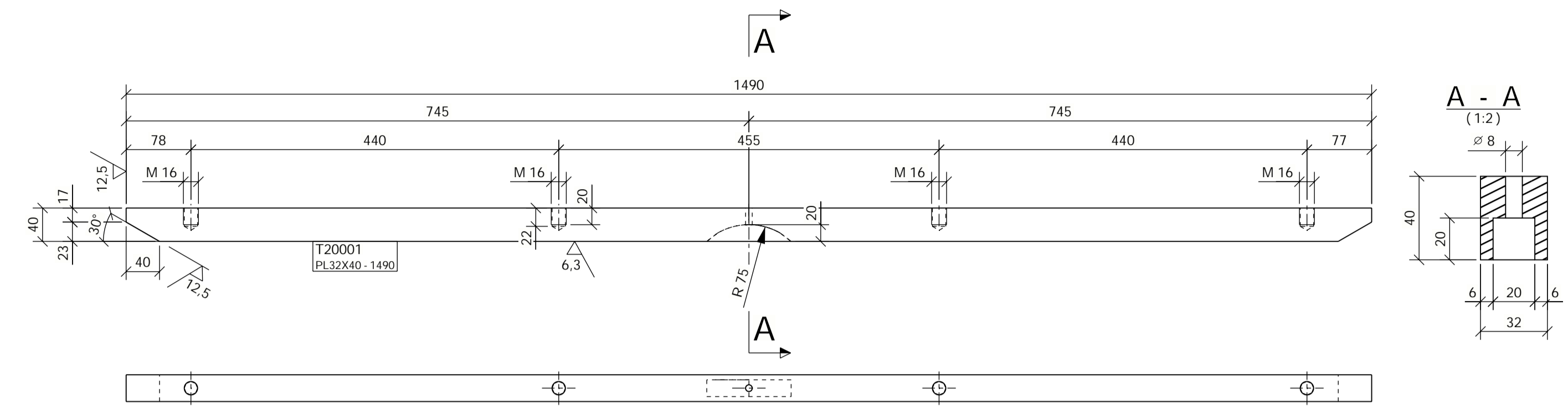
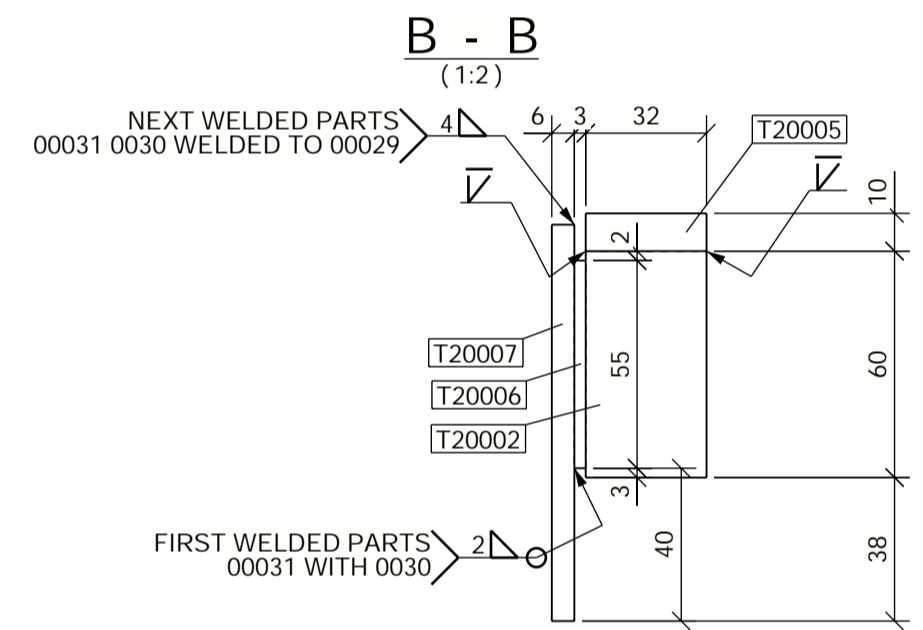
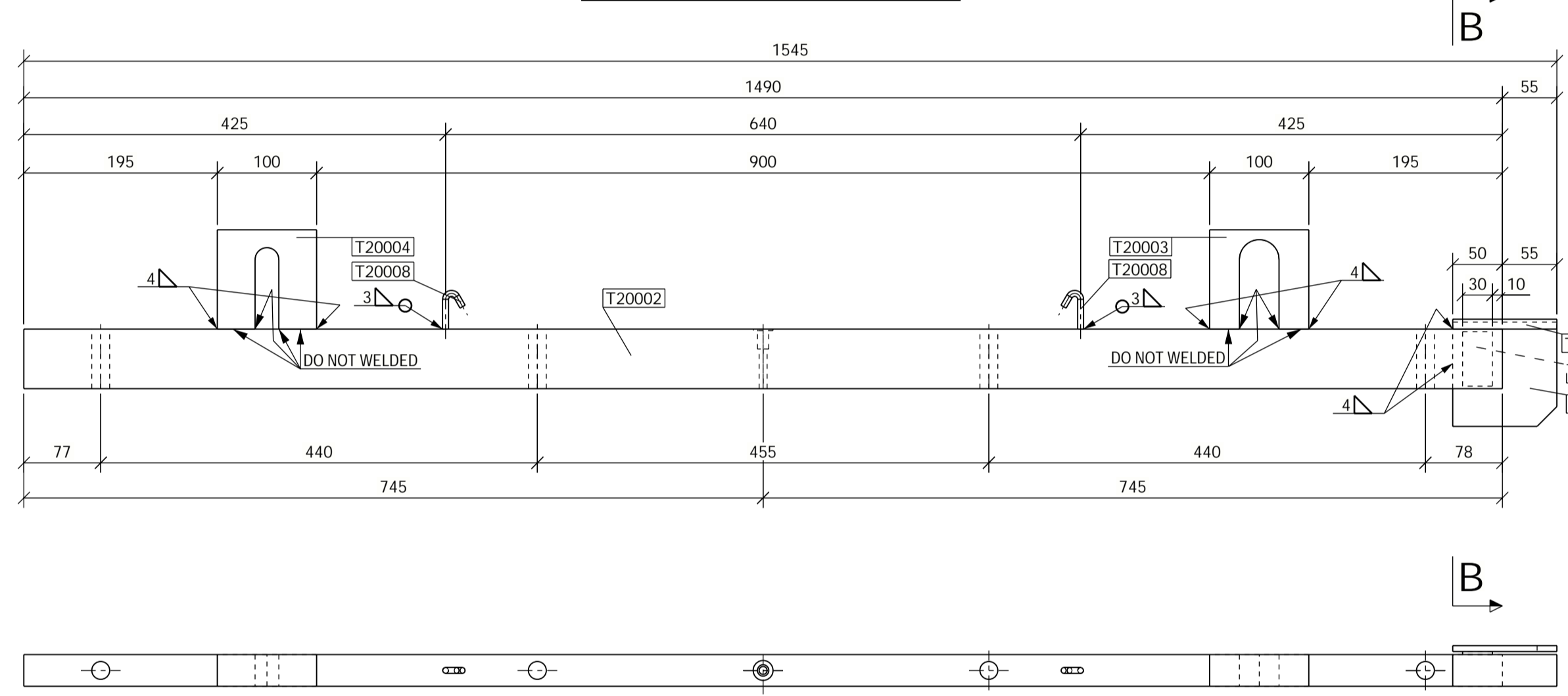


DRAWING / DOCUMENT No.		DESCRIPTION
903254_PPG01_PH02_MTA07_05670_OU107751250	PLATE WORK LOT 2/PARTS T20001-20008	

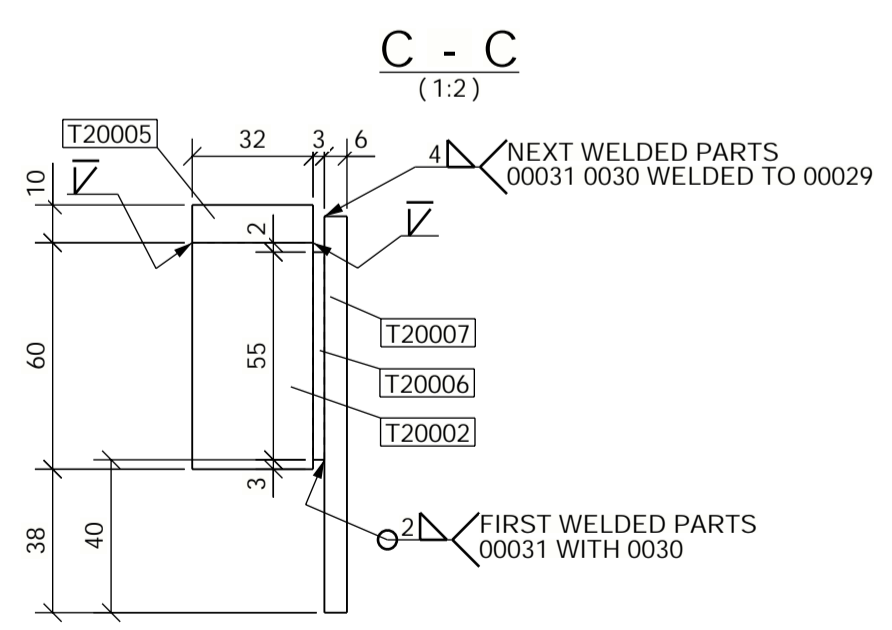
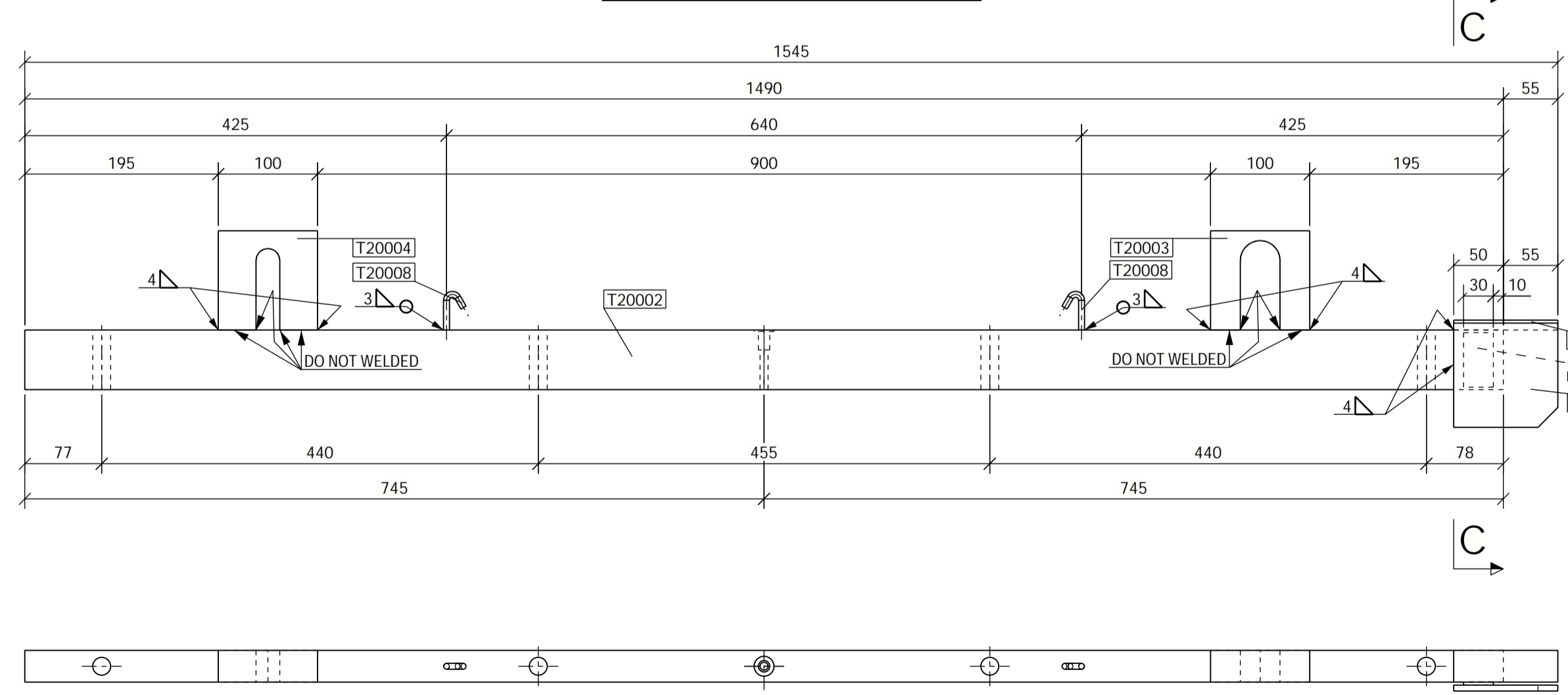
80x ASSEMBLY - T2501



40x ASSEMBLY - T2502



40x ASSEMBLY - T2503



STEEL STRUCTURE EXECUTION CLASS: EXC2
 TOLERANCES ACCORDING TO DIN EN ISO 13920 CLASS B/F

WELDING:
 - UNLESS INDICATED OTHERWISE, ALL WELDS ARE MINIMUM 4 mm AND ARE CONTINUOUS
 - ALL GIVEN WELDS DIMENSIONS ARE EUROPEAN WAY: THROAT DIMENSION, FOR LEG SIZE MULTIPLY THROAT DIMENSION BY 1,42
 - SYMBOLIC REPRESENTATION ON DRAWING TO ISO 2553
 - JOINT PREPARATION ACCORDING TO EN 9692-1 AND EN 1708

DERUSTING AND COATING ACCORDING TO:
 - 903254_ZZZ01_ZZ01_BEC01_00004_OU10198090 - PAINTING AND CONSERVATION
 - 903254_ZZZ01_ZZ01_BEC01_00007_OU10200593 - PAINTING SYSTEMS

LIST OF MATERIAL FOR ASSEMBLY (for 1 member): T2501

PART POSITION	QTY	DESCRIPTION	MATERIAL	WEIGHT (kg)
T20001	1	PL32X40 - 1490	E295	14.4
TOTAL WEIGHT (kg):				14.4

LIST OF MATERIAL FOR ASSEMBLY (for 1 member): T2502

PART POSITION	QTY	DESCRIPTION	MATERIAL	WEIGHT (kg)
T20002	1	PL32X60 - 1490	S235JR	22.0
T20003	1	PL32X100 - 100	S235JR	1.7
T20004	1	PL32X100 - 100	S235JR	2.0
T20005	1	PL10X32 - 105	S235JR	0.3
T20006	1	PL3X30 - 55	S235JR	0.0
T20007	1	PL6X105 - 105	S235JR	0.5
T20008	2	RD6 - 50	S235JR	0.0
TOTAL WEIGHT (kg):				26.5

LIST OF MATERIAL FOR ASSEMBLY (for 1 member): T2503

PART POSITION	QTY	DESCRIPTION	MATERIAL	WEIGHT (kg)
T20002	1	PL32X60 - 1490	S235JR	22.0
T20003	1	PL32X100 - 100	S235JR	1.7
T20004	1	PL32X100 - 100	S235JR	2.0
T20005	1	PL10X32 - 105	S235JR	0.3
T20006	1	PL3X30 - 55	S235JR	0.0
T20007	1	PL6X105 - 105	S235JR	0.5
T20008	2	RD6 - 50	S235JR	0.0
TOTAL WEIGHT (kg):				26.5

100 mm (Standard of comparison)

AutoCAD - Mechanical
 AutoCAD - Electrical
 AutoCAD - Piping
 AutoCAD - Plant