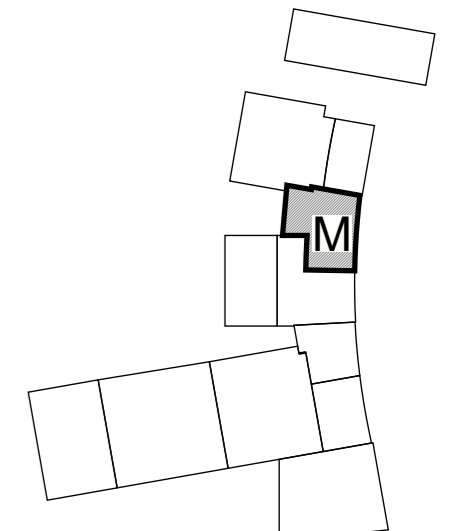


**STRUCTURAL STEEL LAYOUT**  
 SEQUENCE 6 - PARTIAL PLAN @ ROOF  
 UNIT M - REF.: 1/S306  
 T.O.S. EL.: SEE PLAN



- Notes:
- 1) ALL CLOUDED AREAS SHOWN AS "SUPPLY" OR "VERIFY" ARE ESSENTIAL FOR COMPLETION OF THESE DRAWINGS. THOSE AREAS TO BE VERIFIED THAT ARE NOT RESPONDED TO WILL BE ASSUMED TO BE CORRECT AS SHOWN.
  - 2) APPROVAL OF THIS DRAWING BY OWNER/OWNER'S REPRESENTATIVE CONSTITUTES OWNER'S ACCEPTANCE OF THE DESIGN ADEQUACY OF ALL CONNECTIONS DEVELOPED BY THORNTON STEEL FORT WORTH.
  - 3) ERECT ALL STEEL WITH SHIPPING MARK POSITIONED AS SHOWN ON ERECTION PLANS.
  - 4) ALL BOLTS SHALL BE TIGHTENED TO THE SNUG-TIGHT CONDITION AS DEFINED IN AISC SPECIFICATION ON STRUCTURAL JOINTS UNLESS NOTED OTHERWISE.

△			
△			
△			
△			
△	07/07/2022	RELEASED FOR FABRICATION	
△	05/26/2022	ISSUED FOR APPROVAL	WKB
REV	DATE	DESCRIPTION	BY

NOTICE TO CONTRACTOR & ERECTOR  
 Back charges for corrective work or replacement material are not allowed without prior written authorization by Thornton Steel Fort Worth before such costs are incurred.