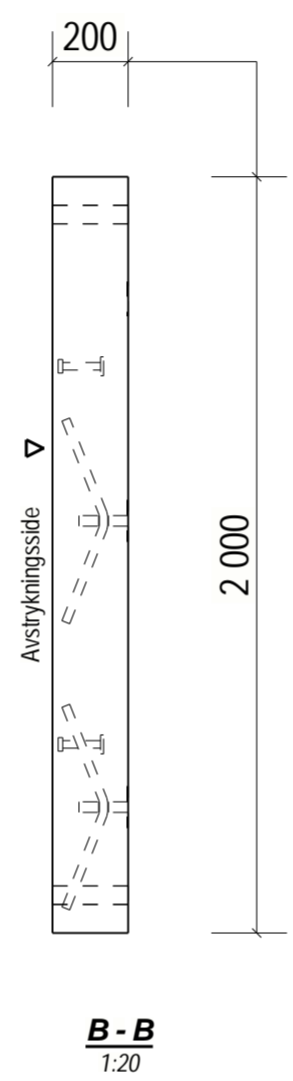
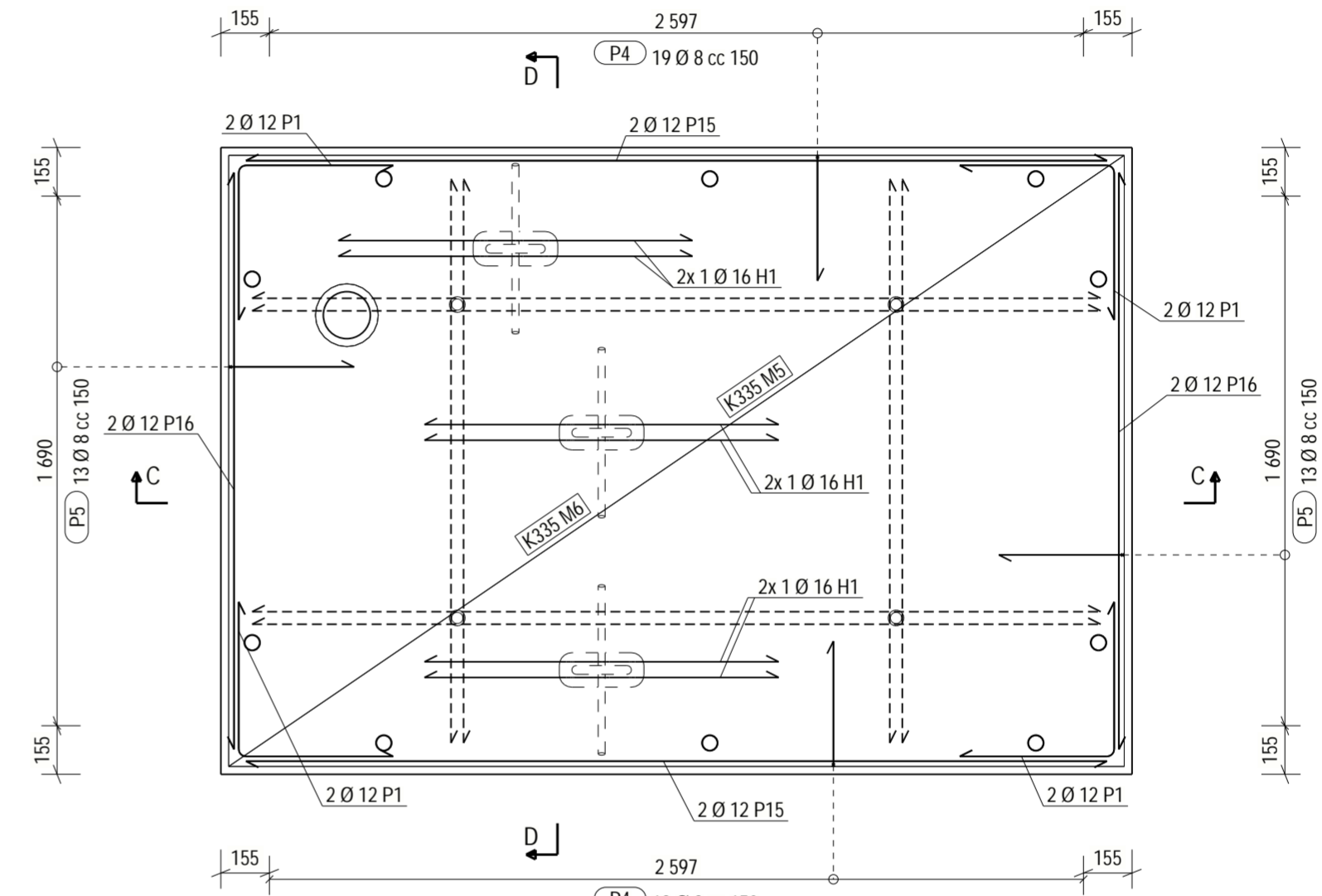


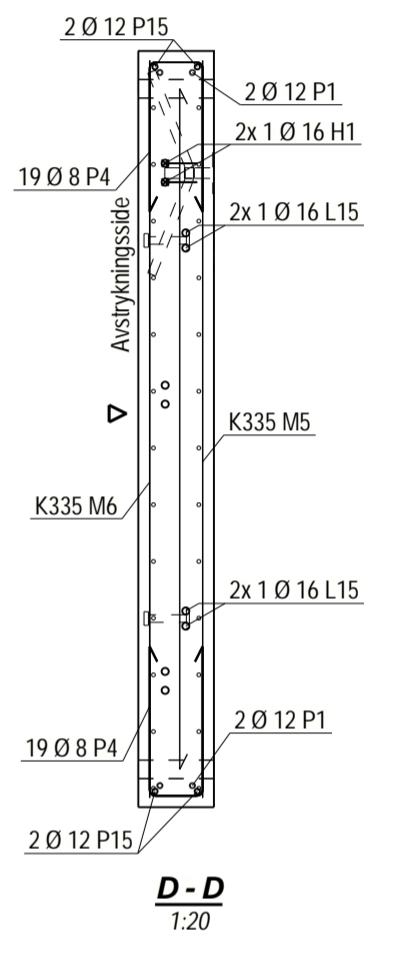
**OPPRISS OPP I FORM**  
1:20



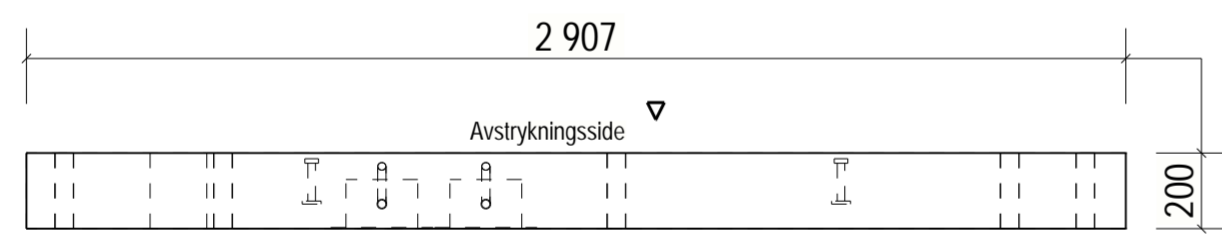
**B-B**  
1:20



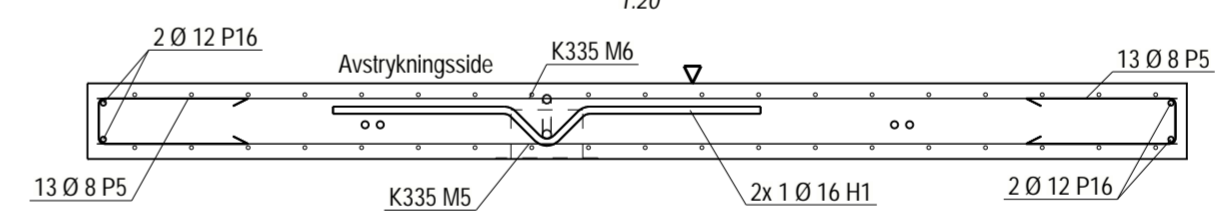
**ARMERING**  
1:20



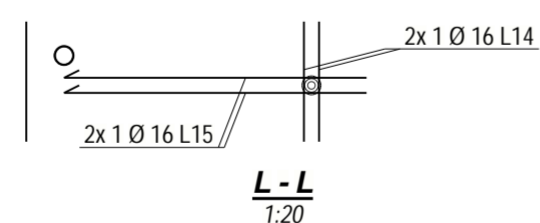
**D-D**  
1:20



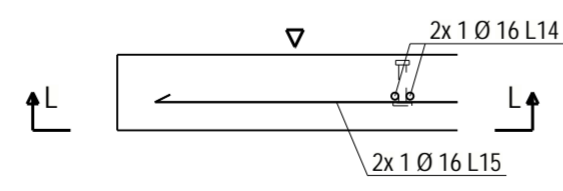
**A-A**  
1:20



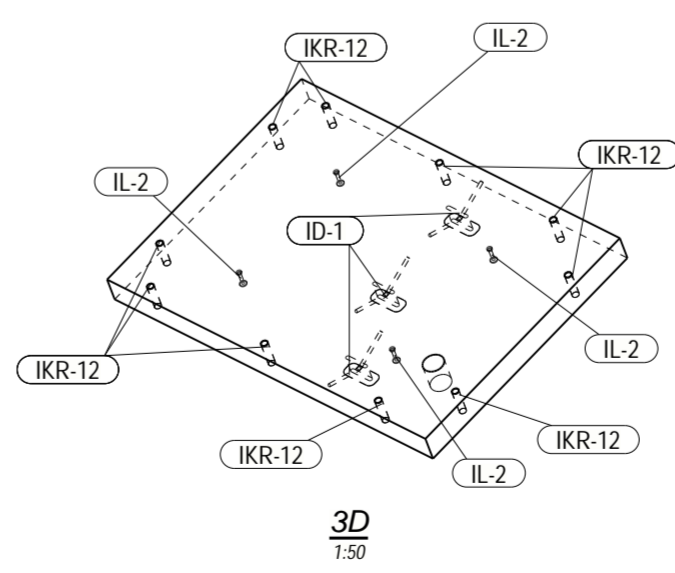
**C-C**  
1:20



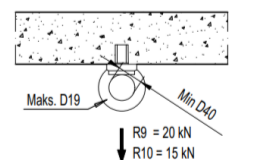
**L-L**  
1:20



**Detail av lofteanke**  
1:20



**3D**  
1:50



BYGGERRE SKAL FORVISSE SEG OM AT  
TALJEKROKER ER FORSKRIFTSMESSIG  
UNDERSØKT, PRØVEBELASTET OG SERTIFISERT.  
PRØVELAST ER 2 GANGER ARBEIDSLAST.  
KROKENE SKAL MERKES MED MÅKS TILLATT LAST  
MRK: Fri høyde i hjørte (SH) måles til underkant krok.  
Se mål SH på tegning B-2-1 og A-1-1.  
LØFTEKROKER KAN SKAFFES  
HOS PRETEC AS  
TLP. 69 10 24 60

**Detail HEISKROK**  
1:10

ARMERING					
Pos	Ant.	Kval.	Dia.	Lengde	Form
H1	6	B500NC	16	1190	
L14	4	B500NC	16	1800	1800
L15	4	B500NC	16	2705	2705
P1	8	B500NC	12	975	
P4	38	B500NC	8	915	
P5	26	B500NC	8	895	
P15	4	B500NC	12	2745	2745
P16	4	B500NC	12	1840	1840
M5	1	B500NA	K335	2857 x 1950	Areal = 5.5m <sup>2</sup>
M6	1	B500NA	K335	2857 x 1950	Areal = 5.5m <sup>2</sup>

Total vekt kamstål: 85.9 kg  
Total vekt nett: 58.3 kg

Heiskrok armering