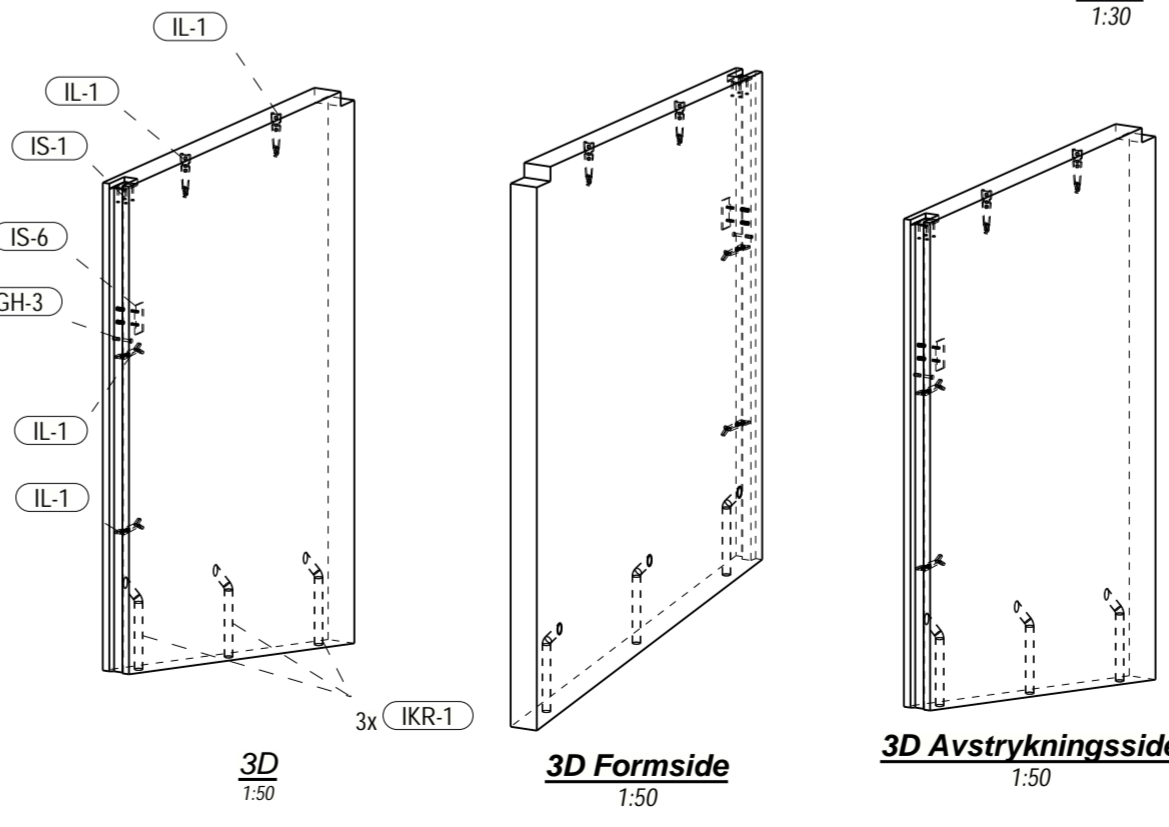
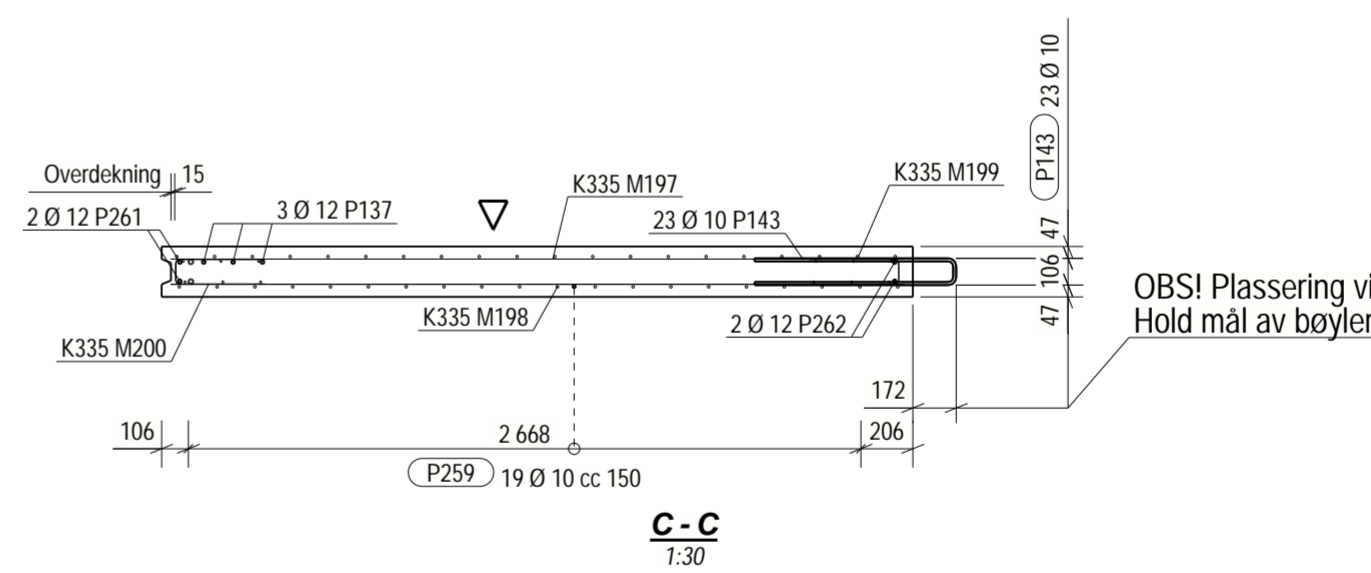
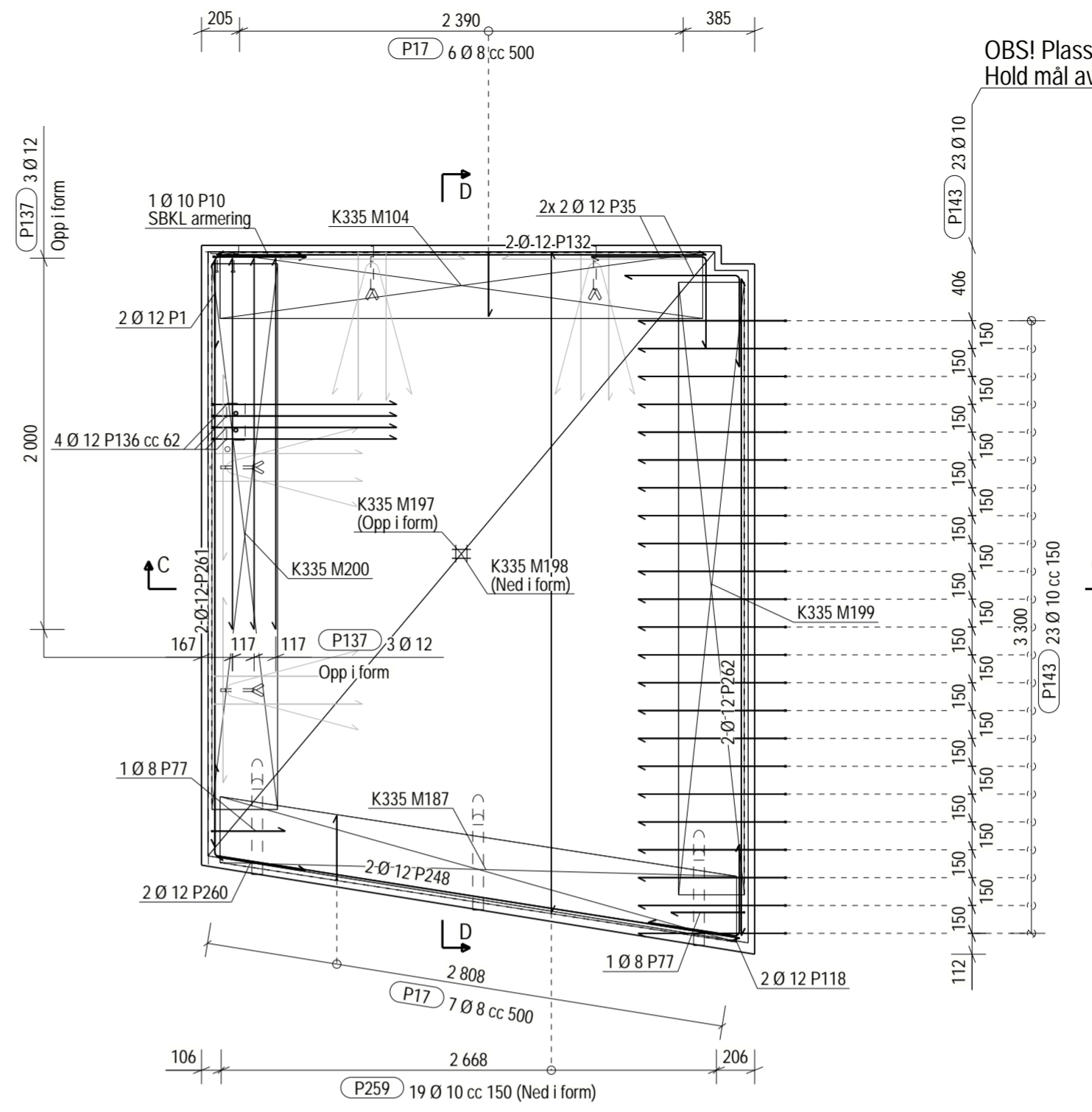
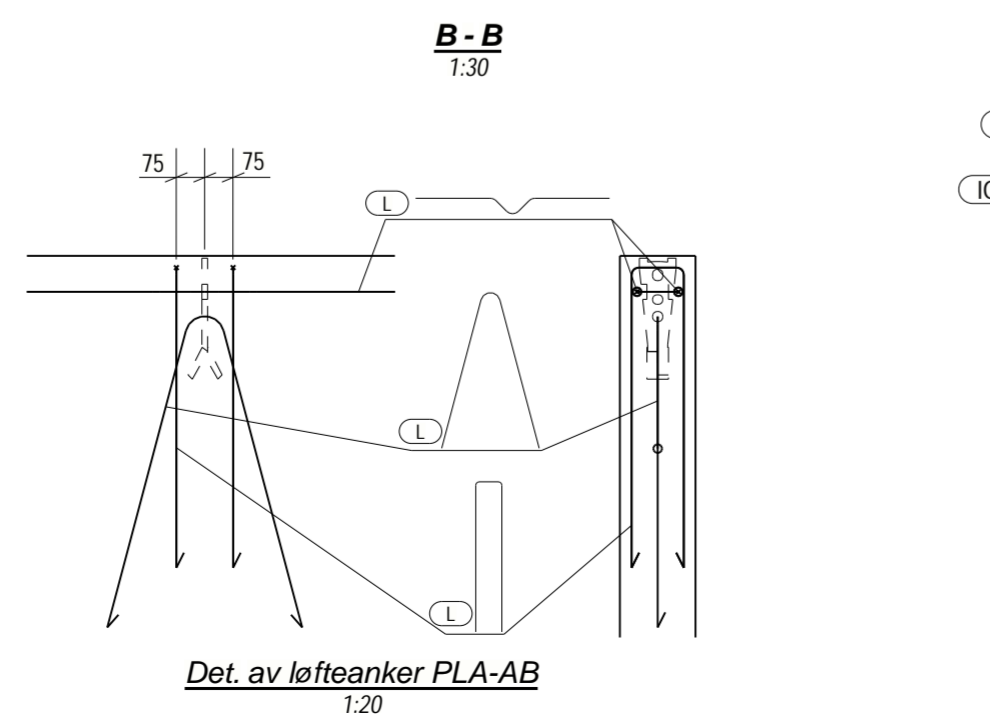
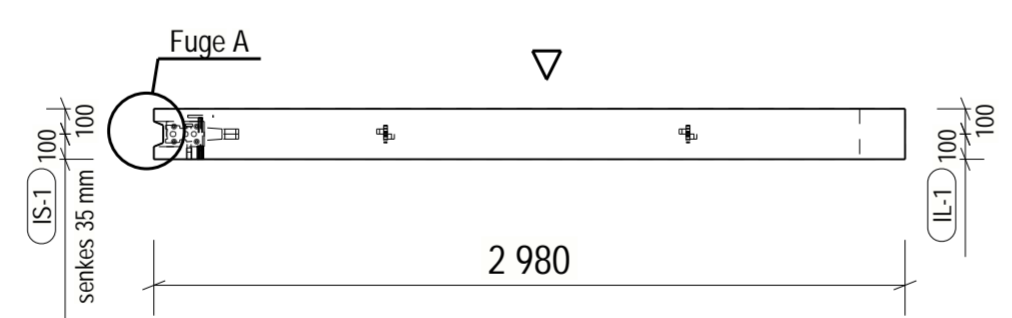
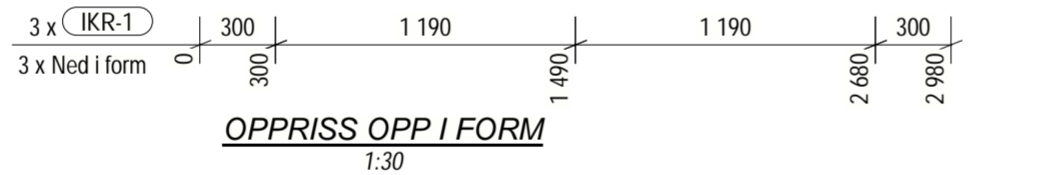


ARMERING					
Pos	Ant.	Kval.	Dia.	Lengde	Form
L6	4	B500NC	8	1695	
L7	4	B500NC	16	1060	
L8	4	B500NC	16	1500	
L23	4	B500NC	8	1675	
L24	4	B500NC	16	1055	
P1	2	B500NC	12	975	
P10	1	B500NC	10	1055	
P17	13	B500NC	8	795	
P35	4	B500NC	12	1100	
P77	2	B500NC	8	880	
P118	2	B500NC	12	975	
P132	2	B500NC	12	2640	
P136	4	B500NC	12	2060	
P137	3	B500NC	12	2000	
P143	23	B500NC	10	1655	
Dor. 40					
P248	2	B500NC	12	2850	
P259	19	B500NC	10	3695	
P260	2	B500NC	12	980	
P261	2	B500NC	12	3155	
P262	2	B500NC	12	3535	
M104	1	B500NA	K335	2600	
M187	1	B500NA	K335	2820	
M199	1	B500NA	K335	3300	
M200	1	B500NA	K335	2940	
M197	1	B500NA	K335	3723 x 2910	Areal = 10.1m ²
M198	1	B500NA	K335	3723 x 2910	Areal = 10.1m ²



Total vekt kamstål: 141.5 kg
Total vekt nett: 148.5 kg