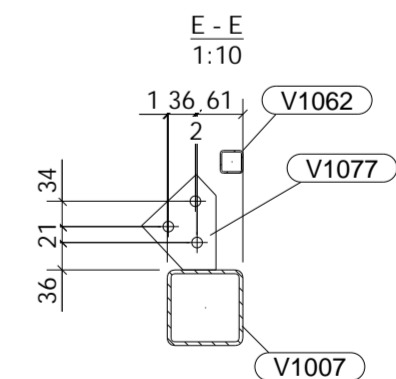
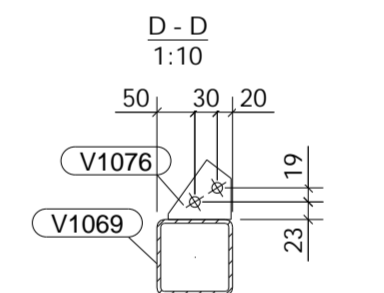
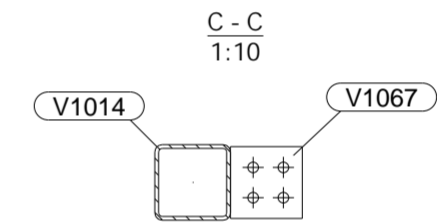
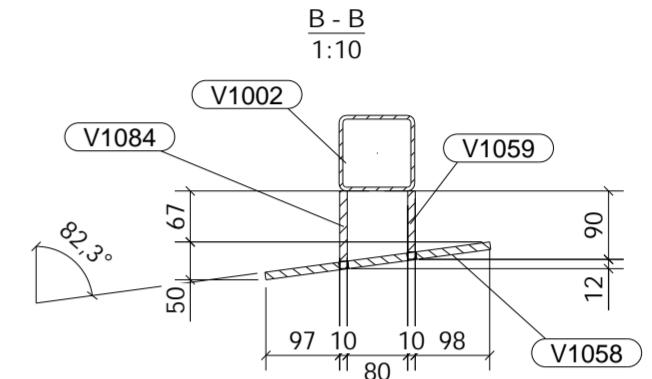
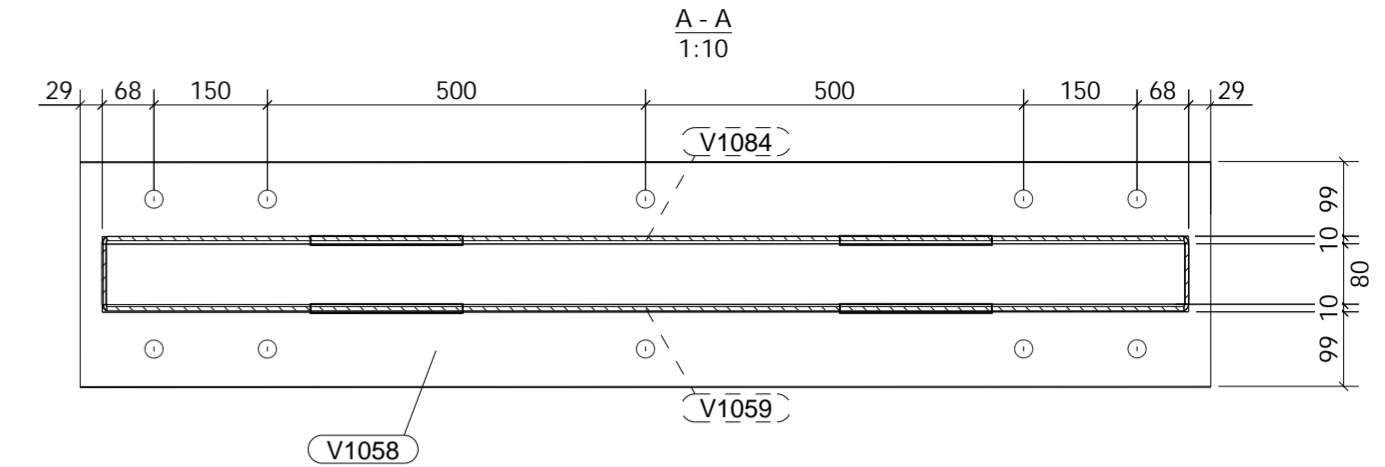
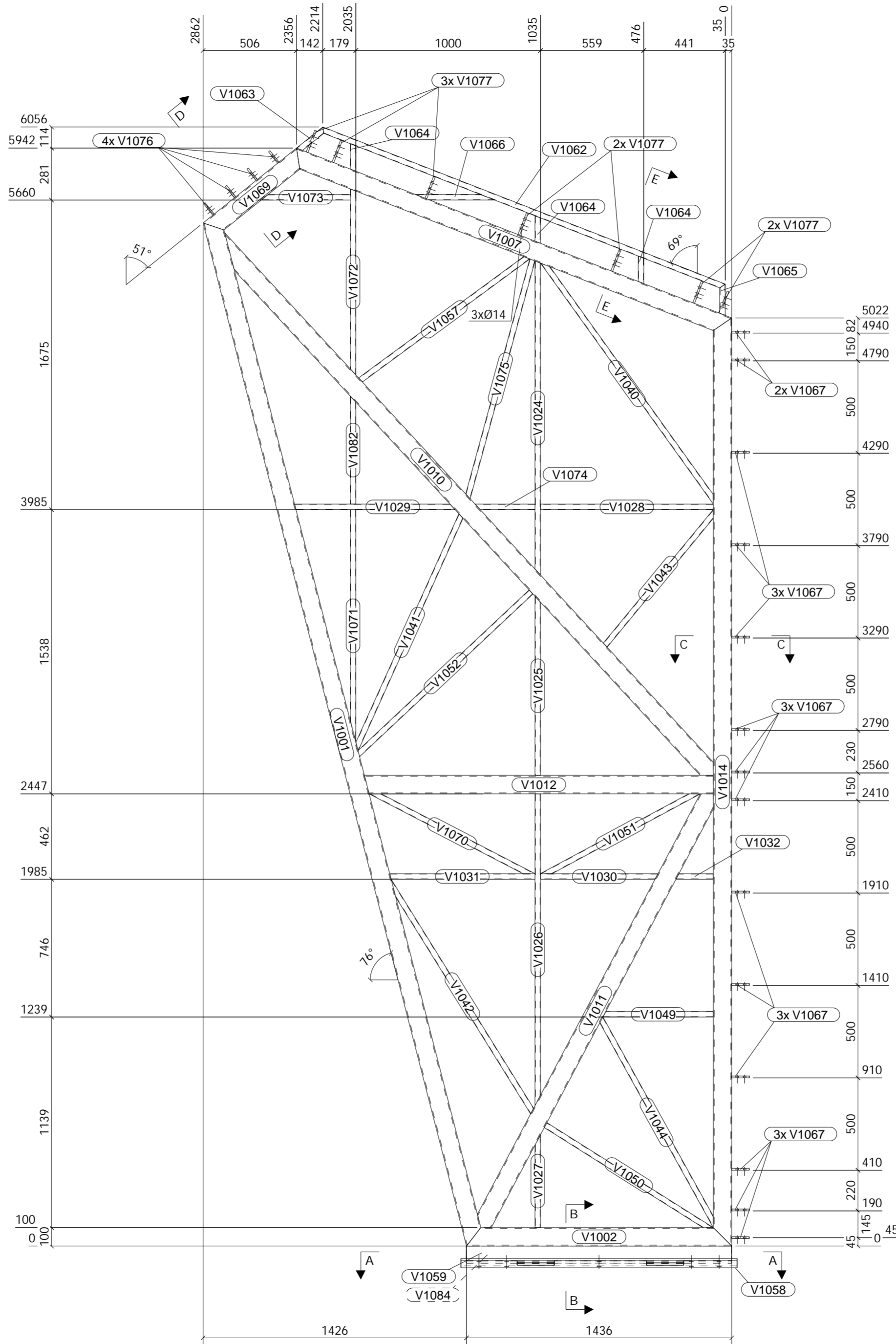


Conjunto V1			Qtd. Total de Conjuntos	Peso Total	Peso Conjunto
			1 Un.	452.79Kg	452.79 Kg
Peça	Qtd	Perfil	Comprimento (mm)	Kg/Peça	Kg Total
V1001	1	SHS100X5	5717	81.09	81.09
V1002	1	SHS100X5	1436	19.35	19.35
V1007	1	SHS100X5	2529	35.42	35.42
V1010	1	SHS100X5	3951	54.91	54.91
V1011	1	SHS100X5	2663	37.33	37.33
V1012	1	SHS100X5	1888	26.94	26.94
V1014	1	SHS100X5	5022	70.92	70.92
V1024	1	RHS30X2	1699	2.80	2.80
V1025	1	RHS30X2	969	1.59	1.59
V1026	1	RHS30X2	1688	2.77	2.77
V1027	1	RHS30X2	503	0.79	0.79
V1028	1	RHS30X2	935	1.56	1.56
V1029	1	RHS30X2	869	1.42	1.42
V1030	1	RHS30X2	636	1.05	1.05
V1031	1	RHS30X2	786	1.31	1.31
V1032	1	RHS30X2	202	0.32	0.32
V1040	1	RHS30X2	1604	2.61	2.61
V1041	1	RHS30X2	1394	2.29	2.29
V1042	1	RHS30X2	1477	2.37	2.37
V1043	1	RHS30X2	940	1.54	1.54
V1044	1	RHS30X2	1286	2.09	2.09
V1049	1	RHS30X2	597	0.98	0.98
V1050	1	RHS30X2	1065	1.74	1.74
V1051	1	RHS30X2	967	1.52	1.52
V1052	1	RHS30X2	1287	2.14	2.14
V1057	1	RHS30X2	1128	1.86	1.86
V1058	1	PL10X300	1495	34.45	34.45
V1059	1	PL10X91	1437	9.40	9.40
V1062	1	RHS30X2	2339	3.87	3.87
V1063	1	RHS30X2	182	0.28	0.28
V1064	3	RHS30X2	149	0.23	0.69
V1065	1	RHS30X2	170	0.26	0.26
V1066	1	RHS30X2	429	0.59	0.59
V1067	14	PL10X95	95	0.71	9.92
V1069	1	SHS100X5	648	8.43	8.43
V1070	1	RHS30X2	996	1.57	1.57
V1071	1	RHS30X2	1257	2.00	2.00
V1072	1	RHS30X2	1006	1.64	1.64
V1073	1	RHS30X2	482	0.77	0.77
V1074	1	RHS30X2	324	0.52	0.52
V1075	1	RHS30X2	1337	2.21	2.21
V1076	4	PL10X79	83	0.34	1.36
V1077	7	PL10X110	99	0.63	4.40
V1082	1	RHS30X2	585	0.95	0.95
V1084	1	PL10X103	1437	10.78	10.78





J.P. ENGENHARIA
JOSÉ R. PIMENTA - SERVIÇOS DE ENGENHARIA, LDA.

Quadro de Materiais:

Classe de Execução:	EXC2
Perfis Laminados:	S275JR
Perfis Enfiados:	S280GD
Parafusos:	Classe 8.8
Porcas de Abertura:	Classe 8.8

Fase: VERMELHO CONJUNTO

Nº Desenho: [V.1]

Referência: 2020JP07

Data: 09.04.2021

Escala: 1:10
1:20

Unidades: [mm]

Folha: A2

Revisão: