

BASEFRAME A1

MATERIAL NUMBER: 2GHE002055A0001

A

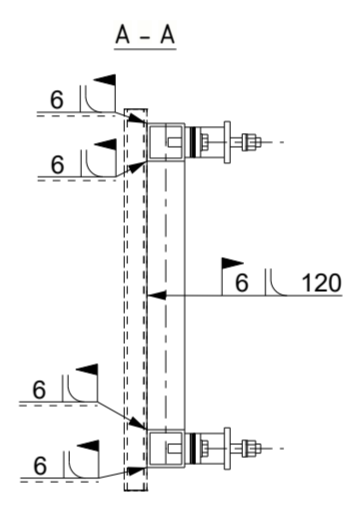
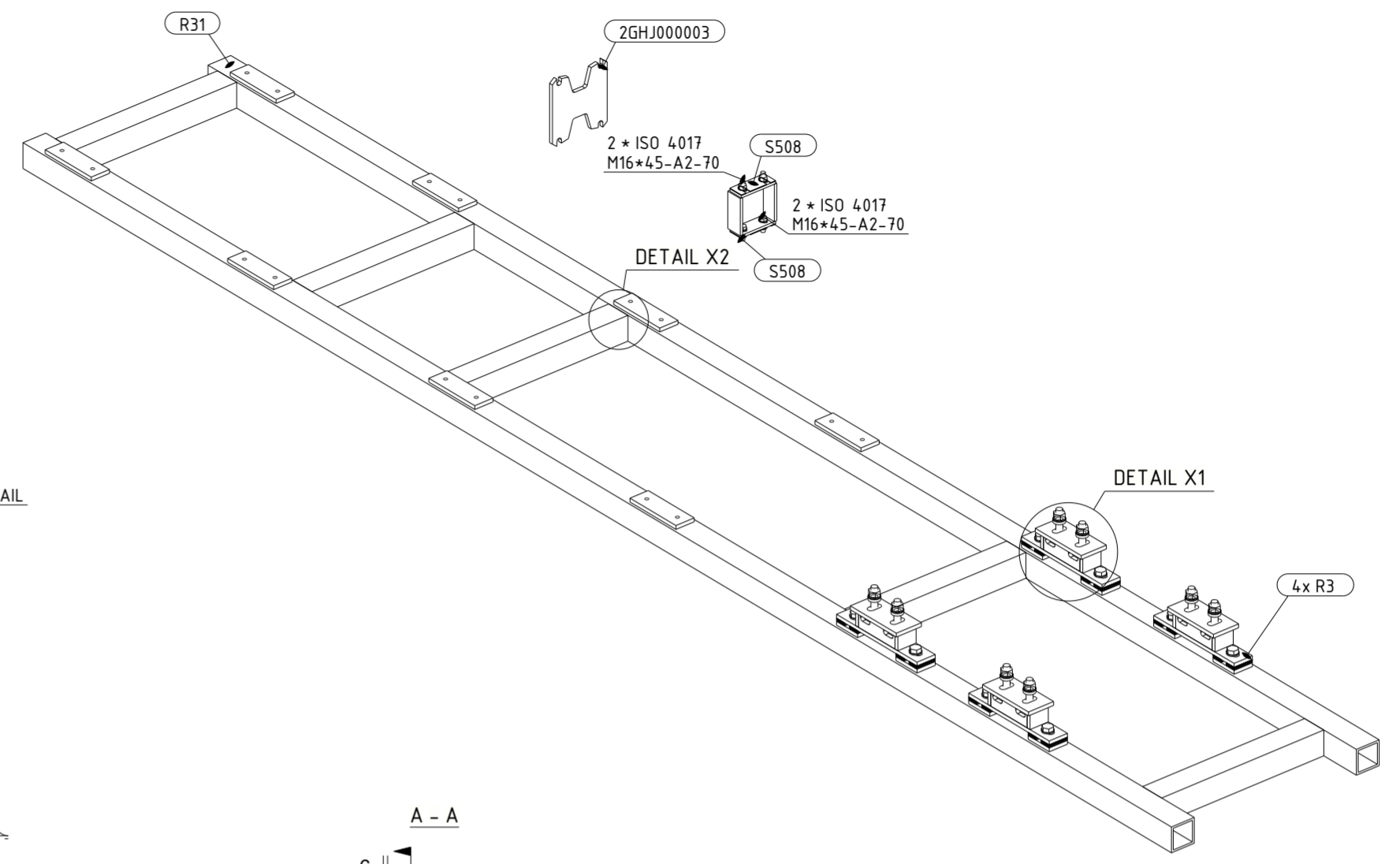
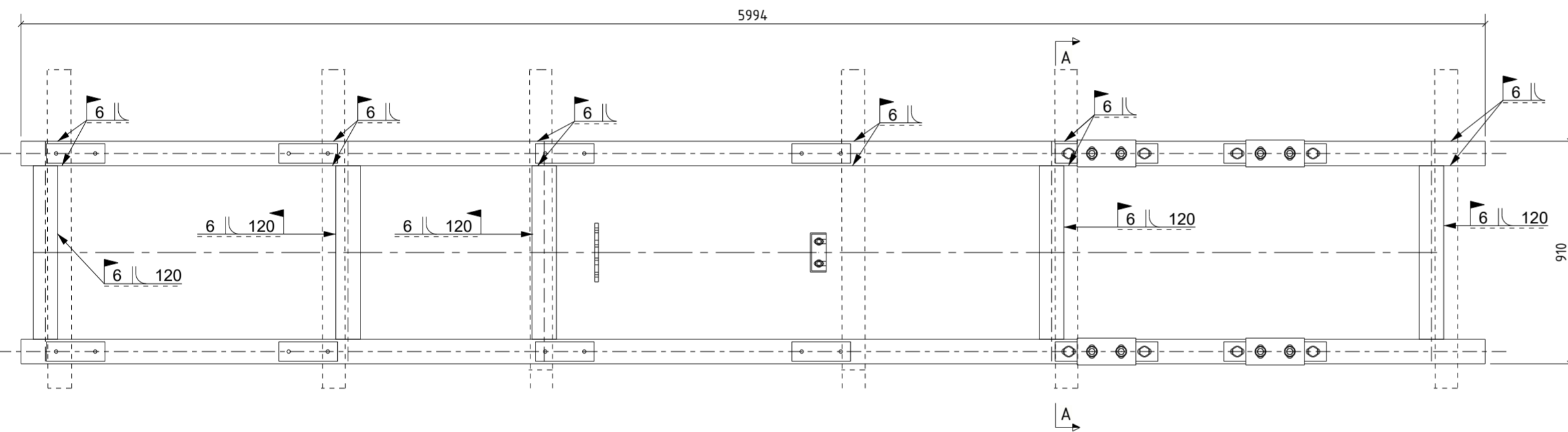
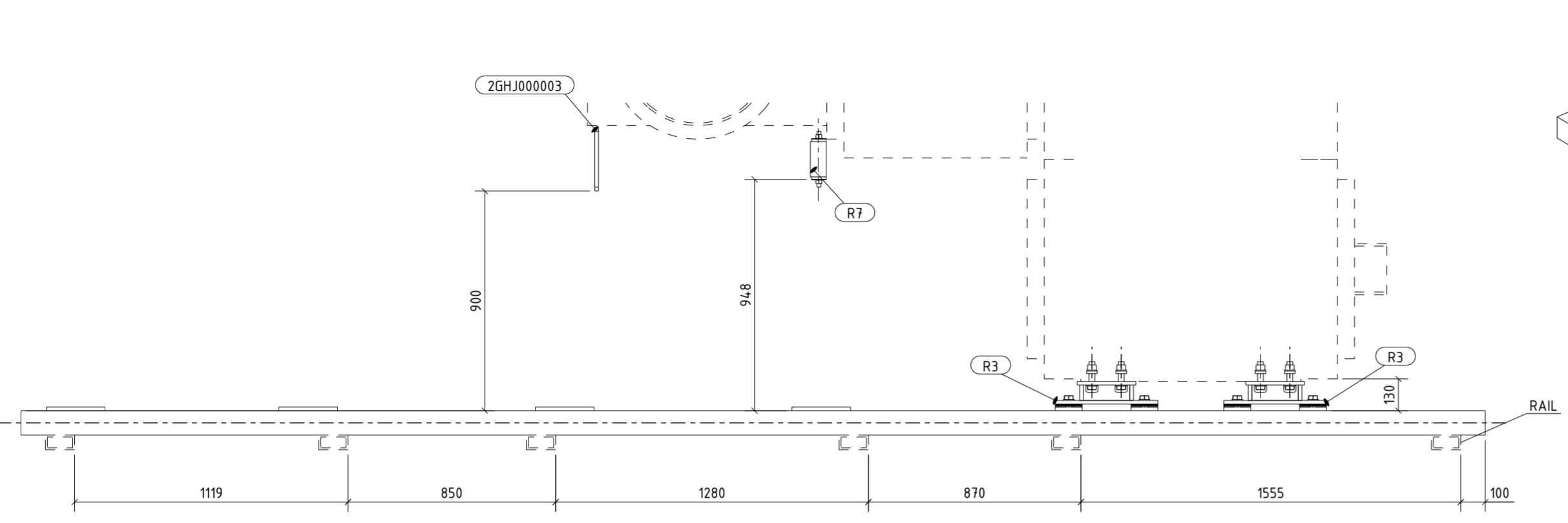
B

C

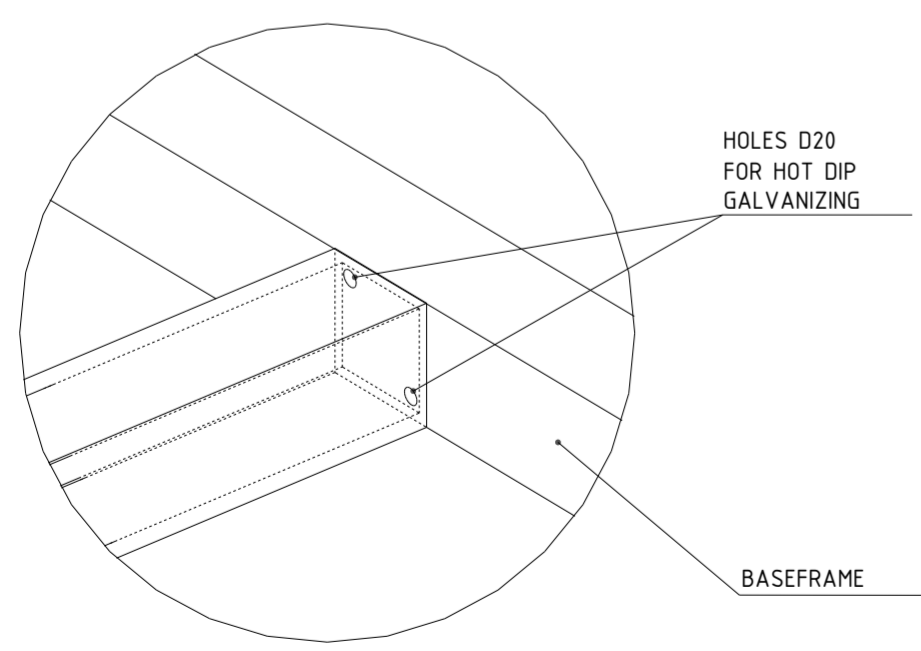
D

E

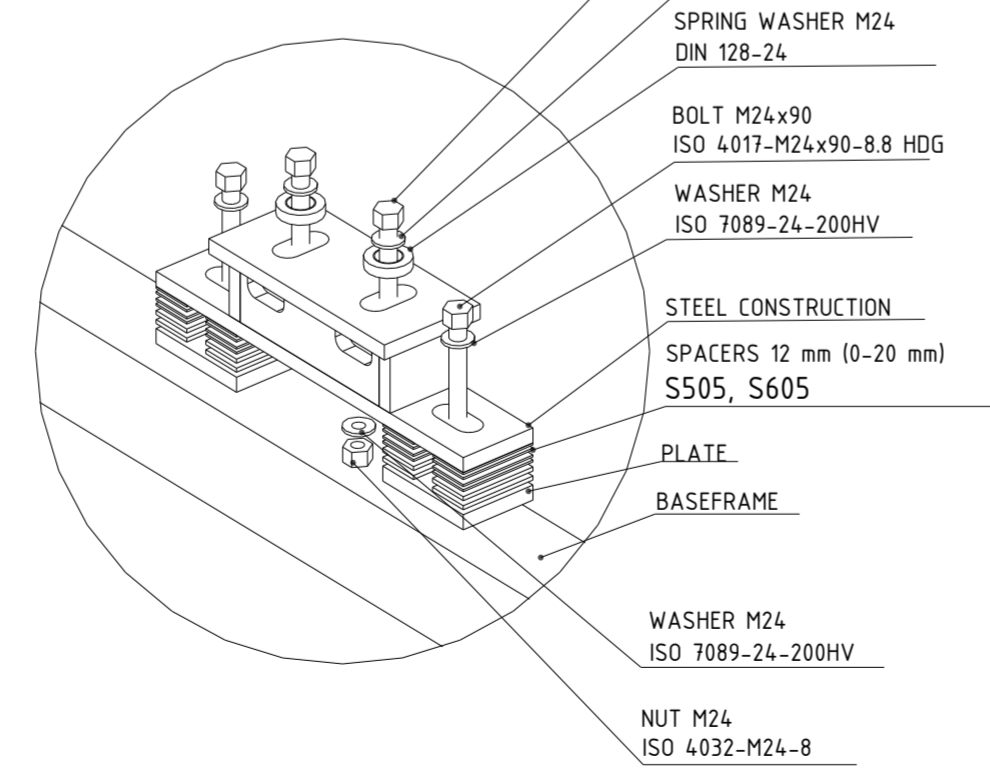
F



DETAIL X2



DETAIL X1



1 GENERAL MANUFACTURING NOTES

- 1.1 All steel parts have to be hot galvanized according to manufacturing request. Otherwise: EN ISO 1461
 - Minimal layer for holes according to manufacturing request. Otherwise: 40 μm / 285 g/m²
 - Minimal layer for other parts according to manufacturing request. Otherwise: 70 μm / 505 g/m²
- 1.2 Hot dip galvanized threads to be brushed prior to assembly.
- 1.3 Welding to be continuous according to manufacturing request. Otherwise: EN ISO 3834-1/-2
- 1.4 All welds shall be all around fillet welds unless otherwise noted.
- 1.5 Thickness of welding seams:

$a = \min(4 \text{ mm}; t)$
 $t = \min(t1; t2)$
- 1.6 Dimensions tolerances for welded construction according to EN ISO 13920-AE.
- 1.7 Dimensions tolerances for non-welded construction according to EN ISO 2768-mK.
- 1.8 Material quality according to manufacturing request. Otherwise: EN 10025, EN 10219
- 1.9 Material class according to manufacturing request. Otherwise: Z35JR
- 1.10 The additional parts as fasteners, PTFE plates, rollers and etc (items in the bill of materials) have to be assembled by a supplier.
- 1.11 All bolts, nuts, washers and etc (except stainless steel) have to be hot galvanized according to manufacturing notes. Otherwise: EN ISO 1461

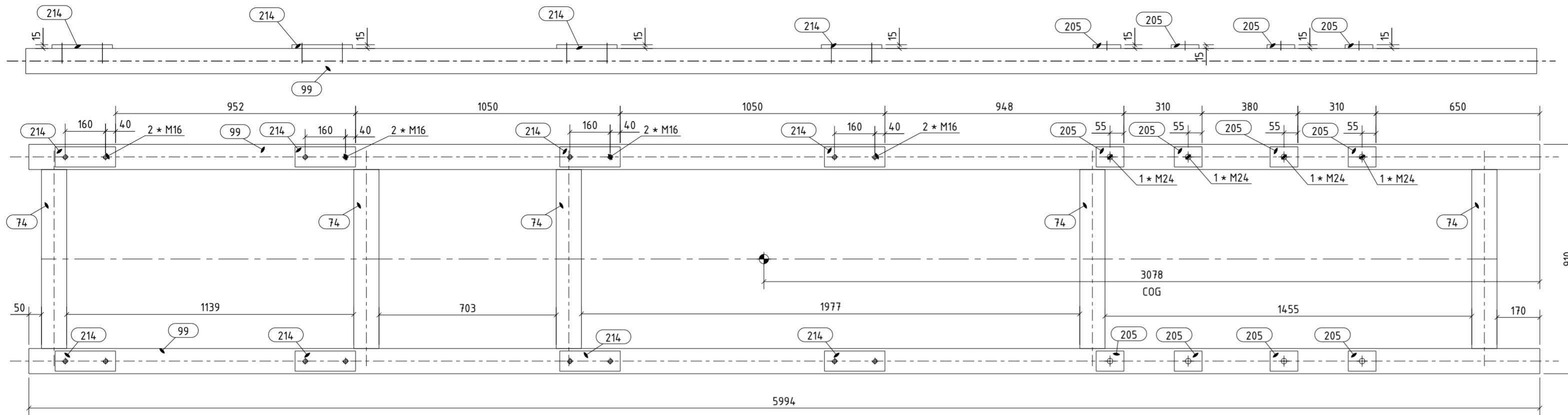
2 GENERAL ASSEMBLY NOTES

- 2.1 Damaged zinc layers have to be zinc painted after assembling.
- 2.2 The tightening torque is according to HASV600416.
- 2.3 For sliding connections with PTFE-material:
 - First nut with maximal torque of 0.5% of values of table in document HASV600416.
 - Second nut with torque according to document HASV600416.

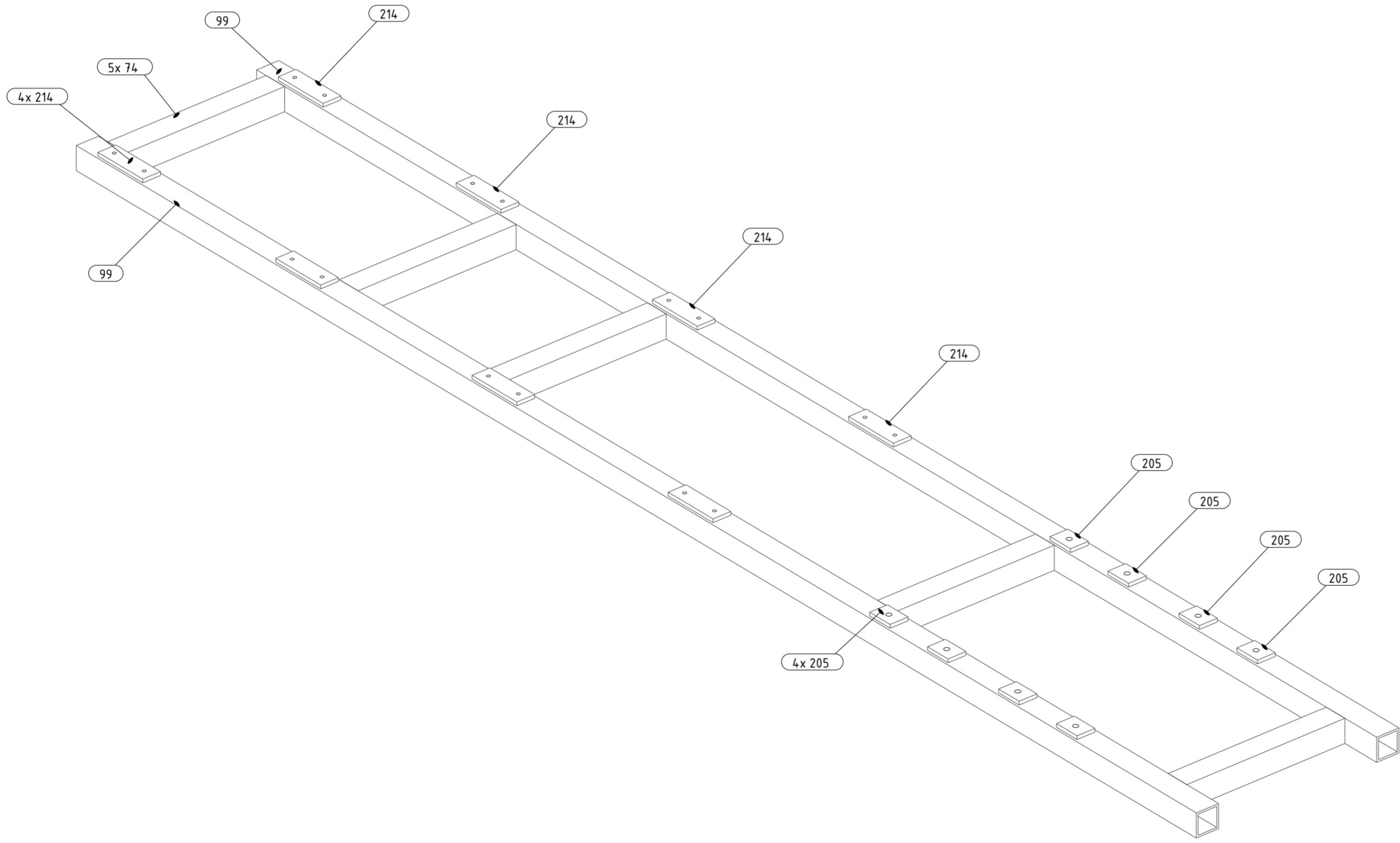
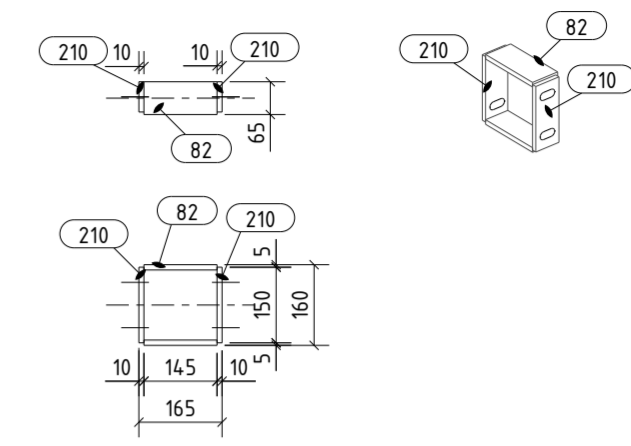
Rev. No.	Date	Created by	Description
A	2023-04-14	ASHQAR	FIRST ISSUE
2GHE002055-A01			We reserve all rights in this document and in the information contained therein. Reproduction, use or disclosure to third parties without express authority is strictly forbidden. © 2023 Hitachi Energy. All rights reserved.

Draft	Derived from	Separate BOM	Scale	Doc.type	Format
2023-04-14	ASHQAR	YES	1:20	ZEI	A2
Approved	Replaces	SF6 SWITCHGEAR ELK4/170 ELIZABETH 69kV			
2023-04-14	BLAHA				
Released	Responsible department	BASEFRAME A1			
2023-04-14	CATALAN				
Order number	Revision	Document Number: 2GHE002055-A01			
101703	A 2023-04-14 ASHQAR				
			Sheet no: 1		

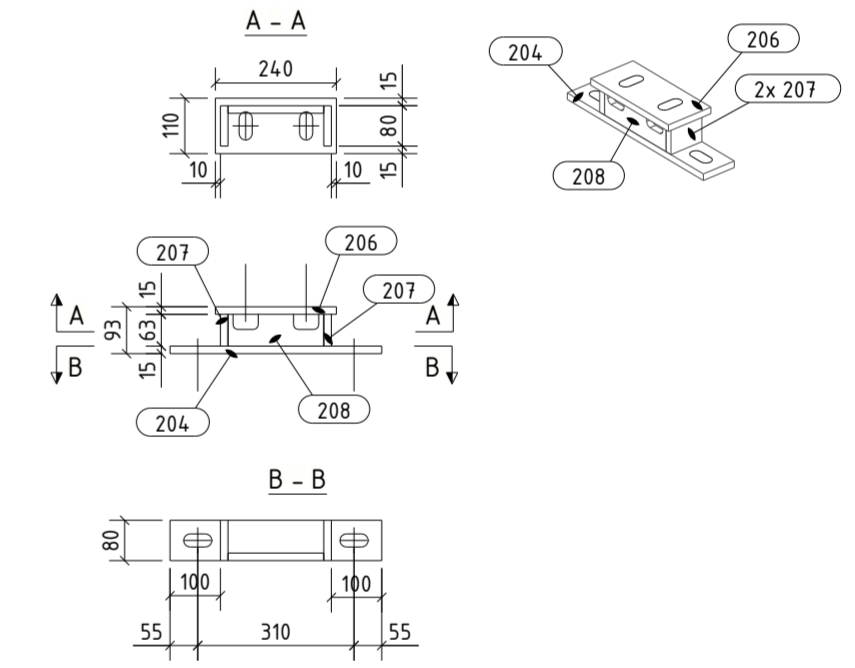
R31



R7



R3

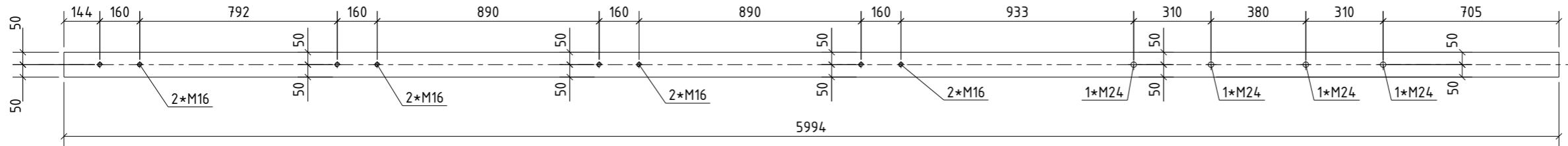


CENTER OF GRAVITY (COG)
 NS - NEAR SIDE, FS - FAR SIDE, BS - BOTH SIDES
 CLASS OF STEEL S235JR. ALL DIMENSIONS ARE IN MILLIMETERS.
 THREADED HOLES TO BE DRILLED AND THREADED AFTER THE ASSEMBLY IS WELDED.
 THREADED HOLES GO ALSO THROUGH WALL THICKNESS OF BOTH THE PLATE AND THE PROFILE.

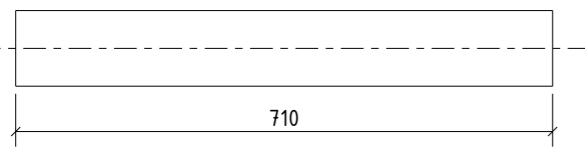
Rev. No.	Date	Created by	Description
A	2023-04-14	ASHQAR	FIRST ISSUE
2GHE002055-A01			We reserve all rights in this document and in the information contained therein. Reproduction, use or disclosure to third parties without express authority is strictly forbidden. © 2023 Hitachi Energy. All rights reserved.

Draft	Derived from	Separate BOM	Scale	Doc type	Format
2023-04-14	ASHQAR	YES	1:15	ZEI	A2
Approved	Replaces	SF6 SWITCHGEAR ELK4/170 ELIZABETH 69kV			
2023-04-14	BLAHA				
Released	Responsible department	BASEFRAME A1			
2023-04-14	CATALAN				
Order number	Revision	Document Number: 2GHE002055-A01			
101703	A 2023-04-14 ASHQAR				

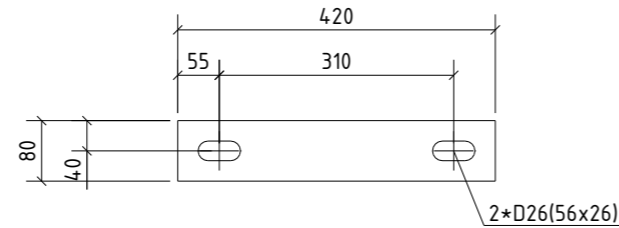
99 SHS100*8*5994 (1:20)



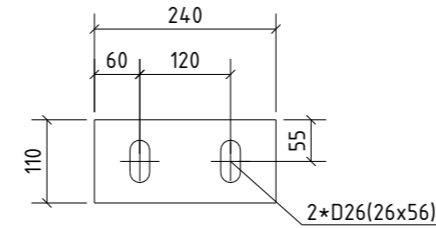
74 SHS100*8*710



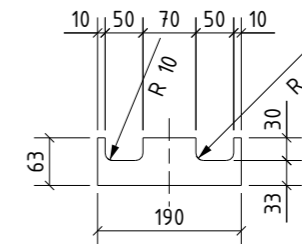
204 PL15*80*420



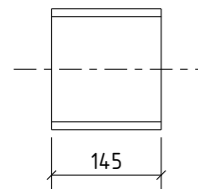
206 PL15*110*240



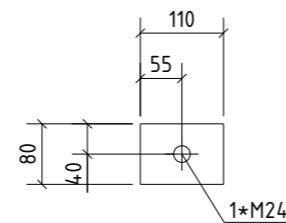
208 PL15*63*190



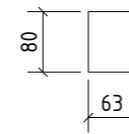
82 UPN160*145



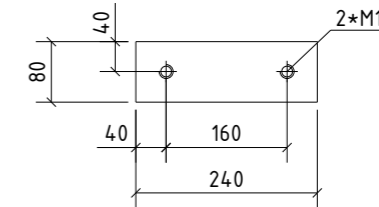
205 PL15*80*110



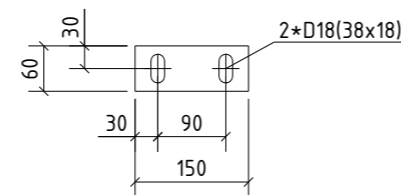
207 PL15*63*80



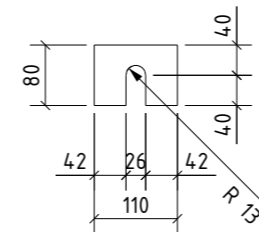
214 PL15*80*240



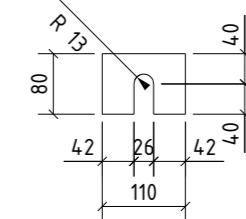
210 PL10*60*150



S505 PL4*80*110



S605 PL2*80*110



THREADED HOLES TO BE DRILLED AND THREADED AFTER THE ASSEMBLY IS WELDED.
CLASS OF STEEL S235JR. ALL DIMENSIONS ARE IN MILIMETERS.

A	2023-04-14	ASHQAR	FIRST ISSUE
Rev. No.	Date	Created by	Description
2GHE002055-A01			We reserve all rights in this document and in the information contained therein. Reproduction, use or disclosure to third parties without express authority is strictly forbidden. © 2023 Hitachi Energy. All rights reserved.

Draft:	2023-04-14	ASHQAR	Derived from:	-	Separate BOM:	YES	Scale:	1:10 (1:20)	Doc.Type:	ZEI	Format:	A3
Approved:	2023-04-14	BLAHA	Replaces:	-	SF6 SWITCHGEAR ELK4/170 ELIZABETH 69kV							
Released:	2023-04-14	CATALAN	Responsible department:	PTHS-SE								Language:
Order number:	101703	Revision:		A 2023-04-14	ASHQAR	BASEFRAME A1	No sheets:	3	Document Number:	2GHE002055-A01		
						Sheet no.:	3					