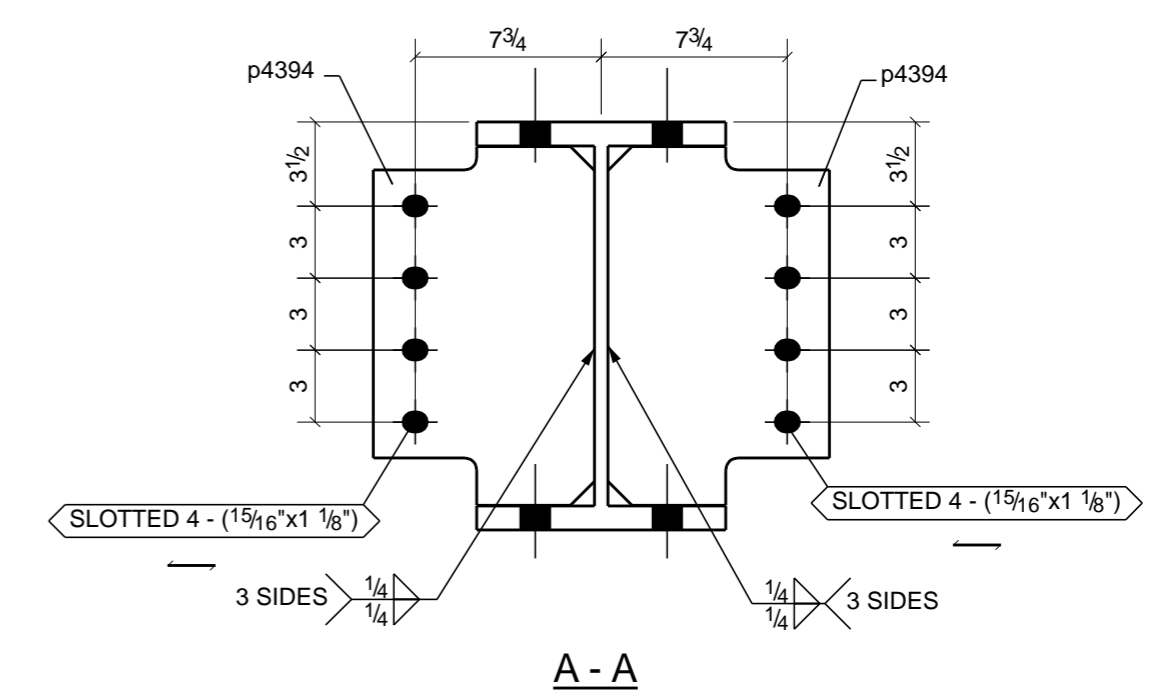
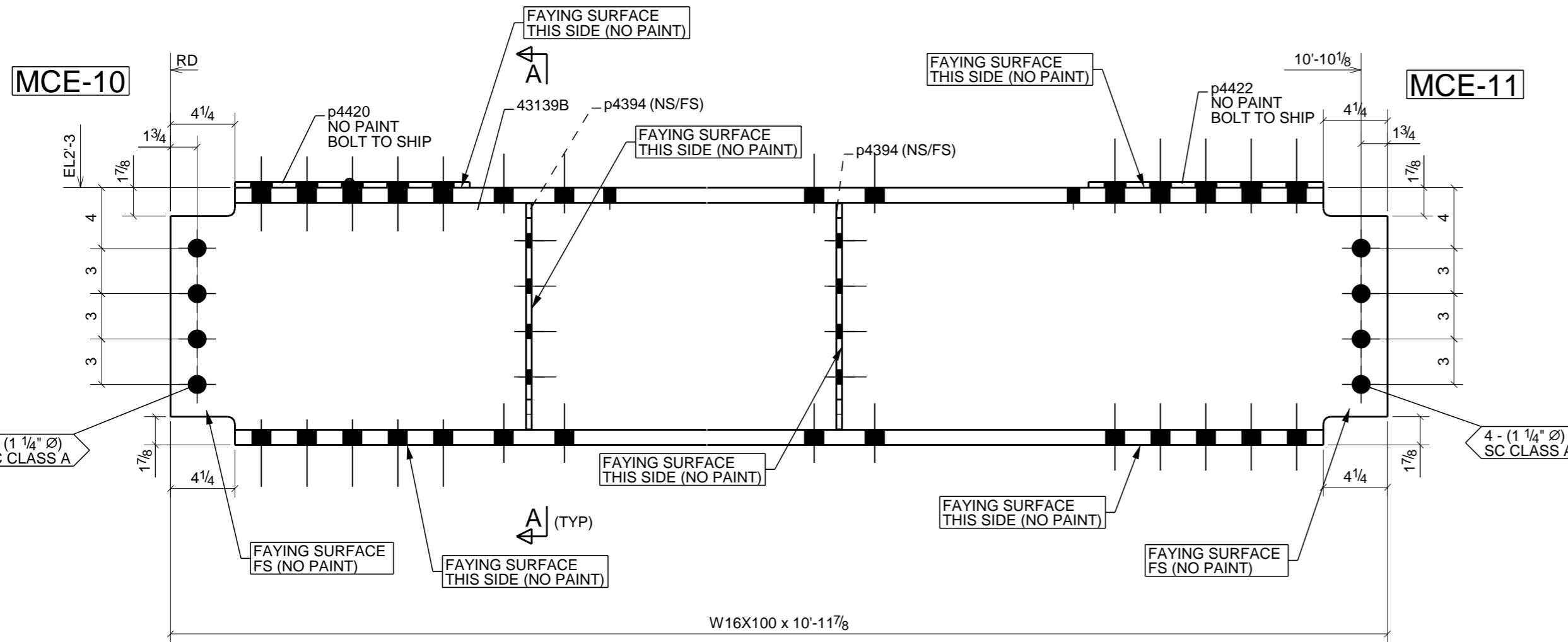
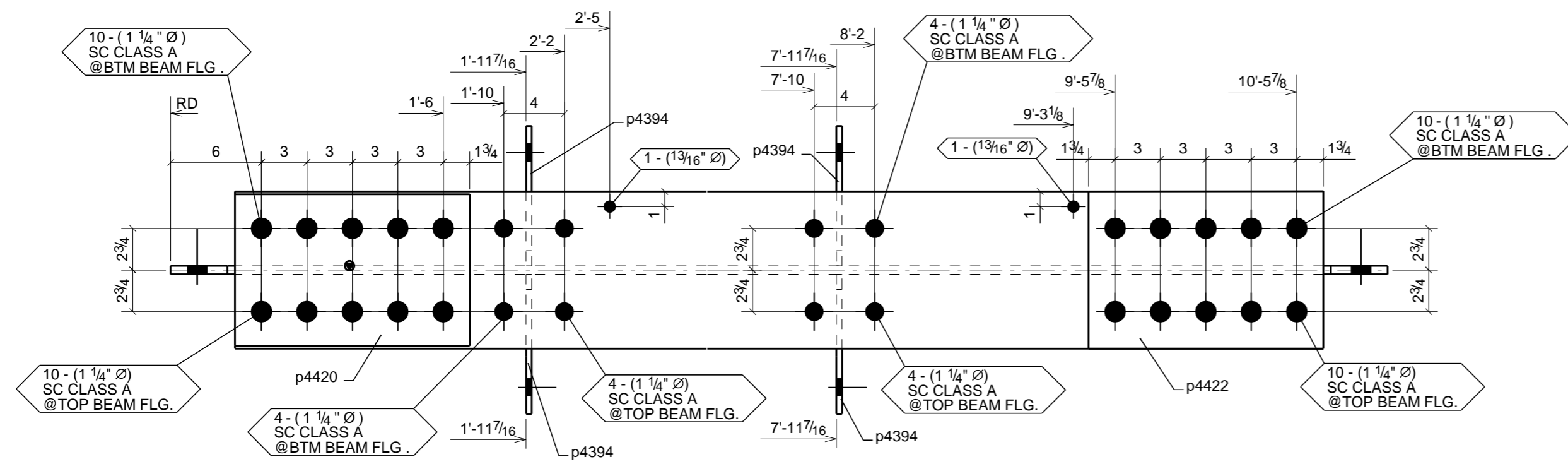


LOCATION					
MARK	QTY	T.O.S	GRID REF	SEQ.	REF.
43139B	1	2'-3"	E28/EC.1-EA.3	4	0

SEQ. NO.: E-1

**BILL OF MATERIAL**

ABM MARK	SHIPPING MARK	MARK	NO. REQ'D	DESCRIPTION	LENGTH		GRADE	WEIGHT	REMARKS
					FT.	IN.			
4360ABMB	43139B		1	BEAM					
		43139B	1	W16X100	10	11 7/8"	A992	1039	
		p4394	4	PL3/8"X9 3/16"	1	2 15/16"	A572-50	53	
		p4420	1	PL3/8"X10"	1	3 1/2"	A572-GR.50	16	
		p4422	1	PL3/8"X10 3/8"	1	3 1/2"	A572-GR.50	17	
TOTAL =								1126	



REV.	DESCRIPTION	DATE	DWN	CHK	FIELD BOLTS SUMMARY
△	ISSUED FOR FABRICATION	03/09/2023	KWE	SSR	
△	RE-ISSUED FOR APPROVAL	03/02/2023	MSZ	SSR	
△	RE-ISSUED FOR APPROVAL	11/04/2022	MSZ	SSR	20 1 1/8" 3 3/4" A490SC_TC SC CLASS A
△	RE-ISSUED FOR APPROVAL	09/12/2022	MSZ	SSR	20 1 1/8" 4 1/4" A490SC_TC SC CLASS A
△	ISSUED FOR APPROVAL	07/08/2022	KWE	SSR	NO DIA. LGT. TYPE REMARK

GENERAL NOTES			JOB USE
MATERIAL: A992 U.N.O.	ELECTRODES: E70XX	REF. ERECTION DWGS:	
HOLES: AS NOTED	CONN'S.: -	SEE LOCATION TABLE	SHOP
SURFACE PREP. AND PAINT: SSPC-SP3 1 SHOP COAT S-W STEEL SPEC UNIVERSAL PRIMER (B50RV6227-Red)			APPROVAL
DESCRIPTION: BEAM			
COMPONENT: E			
JOB: Lloyd Harbor Residence Long Island, New York			
Customer: Kean Development Co., Inc.			

STAMP OF ENGINEER:

DETAILED BY:

**E&H STEEL CORPORATION**

Post Office Box 1170  
Midland City, Alabama 36350  
(334) 983-5636

DRAWN BY	DATE
JKU	07/08/2022
CHKD. BY	DATE
SSR	07/08/2022
JOB NO.	DRG. NO.
21004	43139
	0

D | 16 15/16" x 9/16"  
W | 10 3/8" x 1"

ONE - BEAM - 43139B

HOLES NOTED "SLIP CRITICAL" SHALL HAVE NO PAINT WITHIN 3" OF THOSE HOLES