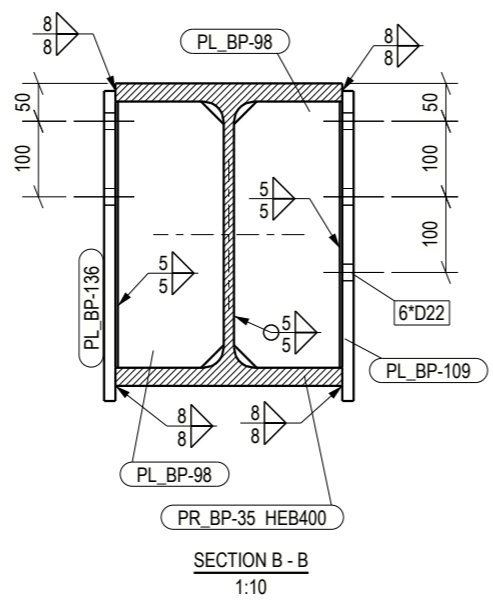
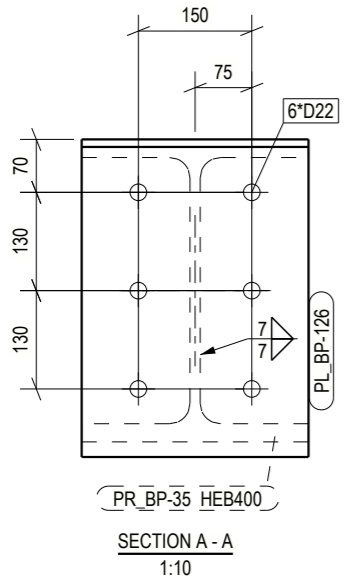
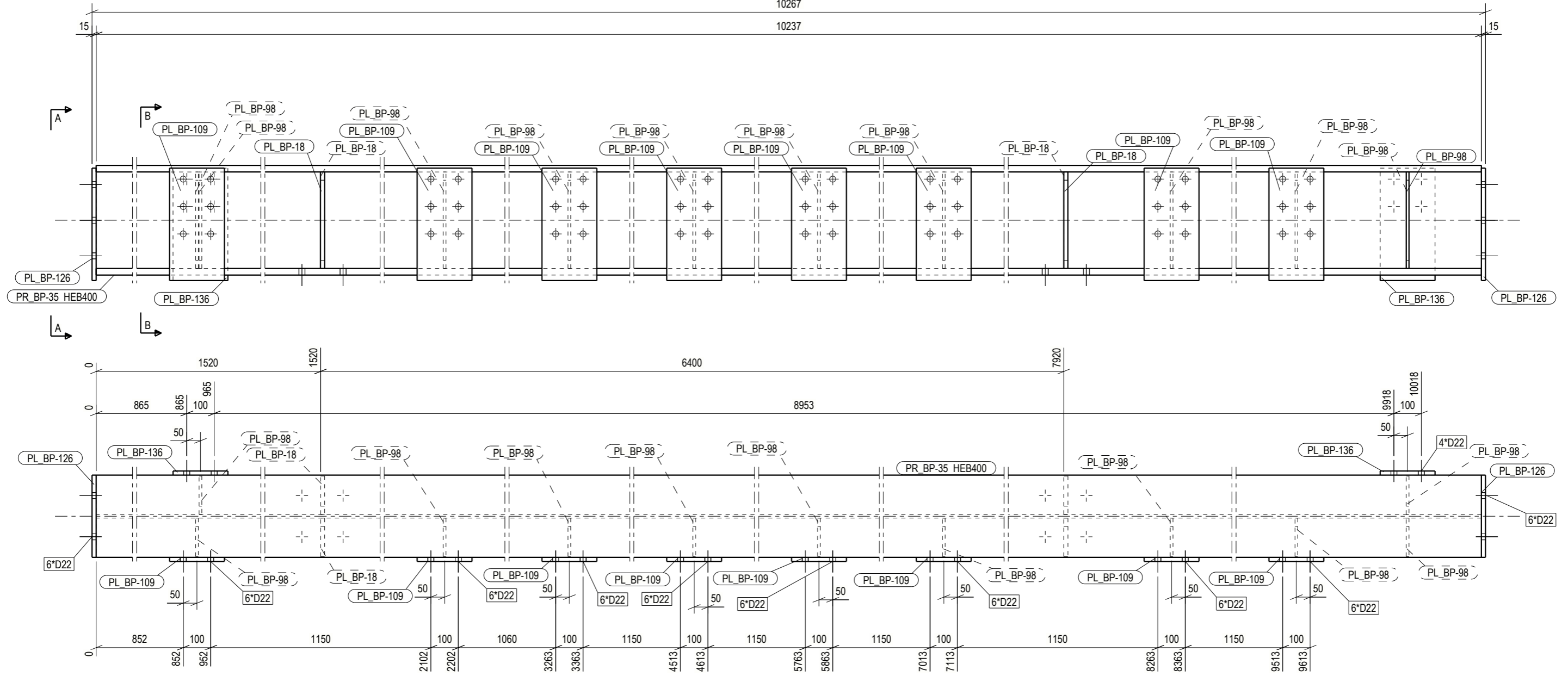


10267
10237



1	0		15.05.2023
No	REV MARK	REVISION DESCRIPTION	REV. DATE
MATERIAL LIST FOR ASSEMBLY MK'D			
Mark	Profile	Material	BM_BP-19
No.	Length	Area	No. Required
PR_BP-35	HEB400	S355JR	1
PL_BP-126	PL15*300	S355JR	2
PL_BP-136	PL15*200	S355JR	2
PL_BP-18	PL15*140	S355JR	4
PL_BP-109	PL15*200	S355JR	8
PL_BP-98	PL10*140	S355JR	11
Total			23.7
			1781.2

OMNIKON
INDUSTRIAL DRYERS

Kościelna 29, 95-050, Konstancin Łódzki, POLAND
info@omnikon.pl
+48 42 632 44 73

OBJECT: COGNAC, FRANCE Avenue Claude BOUCHER, 16100 CHATEAUBERNARD		INVESTOR: Verallia	
DRAWING NAME	ASSEMBLY BM_BP-19 BEAM	DATE	15.05.2023
PROJECT PHASE	WORKSHOP DOCUMENTATION	PROJECTION	1:15 1:10
BRANCH	STEEL STRUCTURE	DESIGN	M. Sc., Eng. Maciej Listewnik M. Sc., Eng. Karol Nowak M. Sc., Eng. Rafał Kossakowski
DRAWING NO. BM_BP-19-0		FORMAT A3	

UNMARKED WELDS:

1) Single elements shall be welded by fillet welds. Welds shall be closed.
2) Size of fillet weld "a" depends on type of welded elements:
- pipe to pipe: "a" equals thickness of thinner wall pipe,
- plate or hot rolled profile to pipe: "a" means thickness of pipes wall but not more than 0,7 of thickness of plate or hot rolled profile,
- other elements:
a) for both side fillet weld: a=0,5 of thickness of thinner welded element
b) for one side fillet weld: a=0,7 of thickness of thinner welded element
c) in case of extra joint - full penetration welds shall be done.