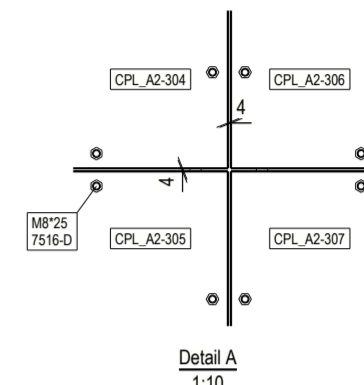


SILO AREA - CP +12,770m +13,745m +14,406m
1:40



Axe Batiment (F1K)

No	REV MARK	REVISION DESCRIPTION	REV DATE
1	0	FIRST ISSUE	23.05.2023

		Koscielna 29, 95-050, Konstantynów Łódzki, POLAND info@omnikon.pl +48 42 632 44 73	
OBJECT: SILO AREA COGNAC, FRANCE Avenue Claude BOUCHER, 16100 CHATEAUBERNARD		PROJECT: Verallia	
DRAWING NAME	SILO AREA - CP +12,770m +13,745m +14,406m		
PHASE	WORKSHOP DOCUMENTATION	DATE	SCALE
BRANCH	STEEL STRUCTURE	23.05.2023	1:10 1:40
DESIGN	M. Sc., Eng. Maciej Listewnik M. Sc., Eng. Karol Nowak M. Sc., Eng. Rafał Kossakowski	DRAWING NUMBER	FORMAT
		COGF1-SILO-05-0	A2