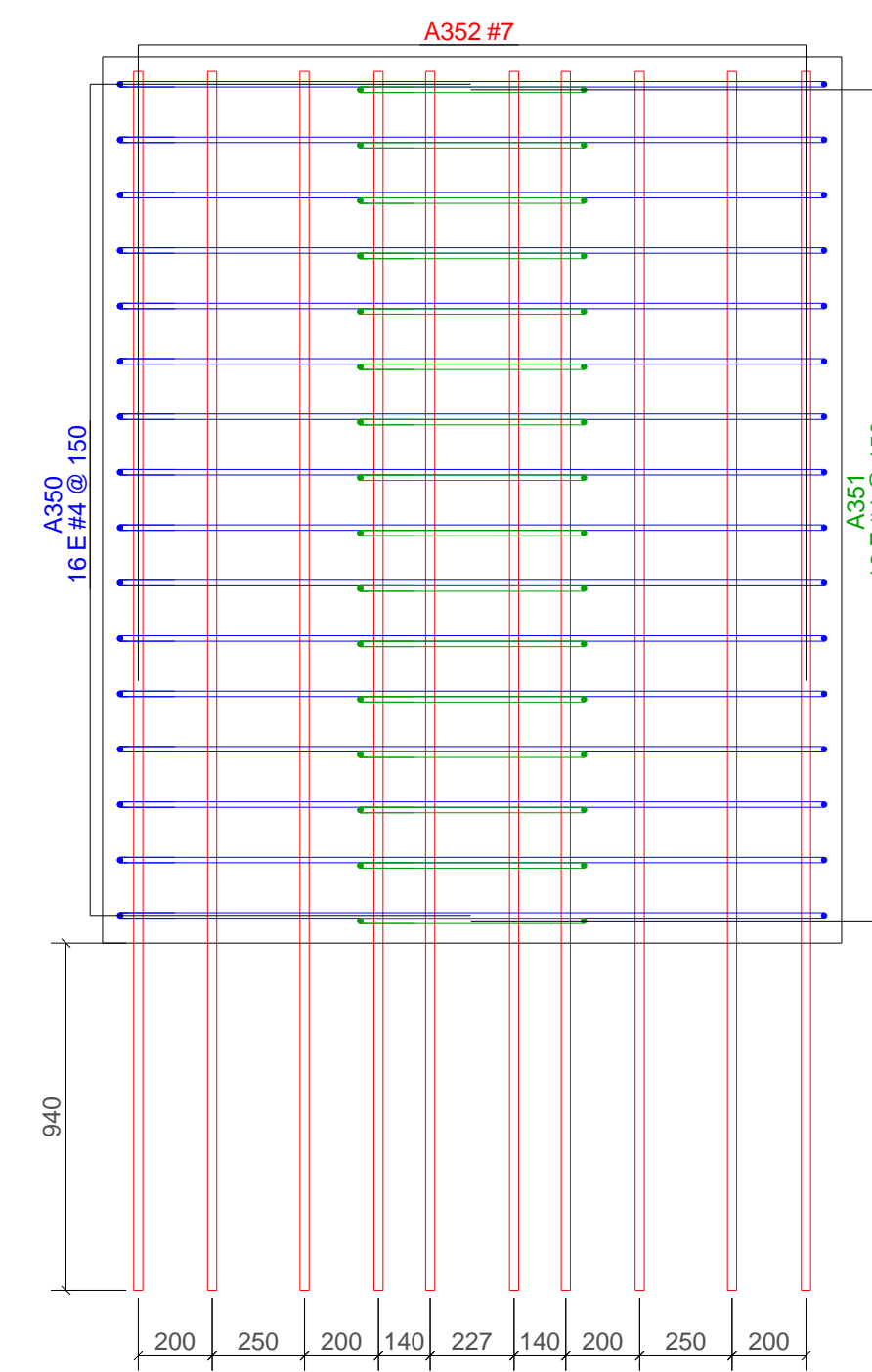
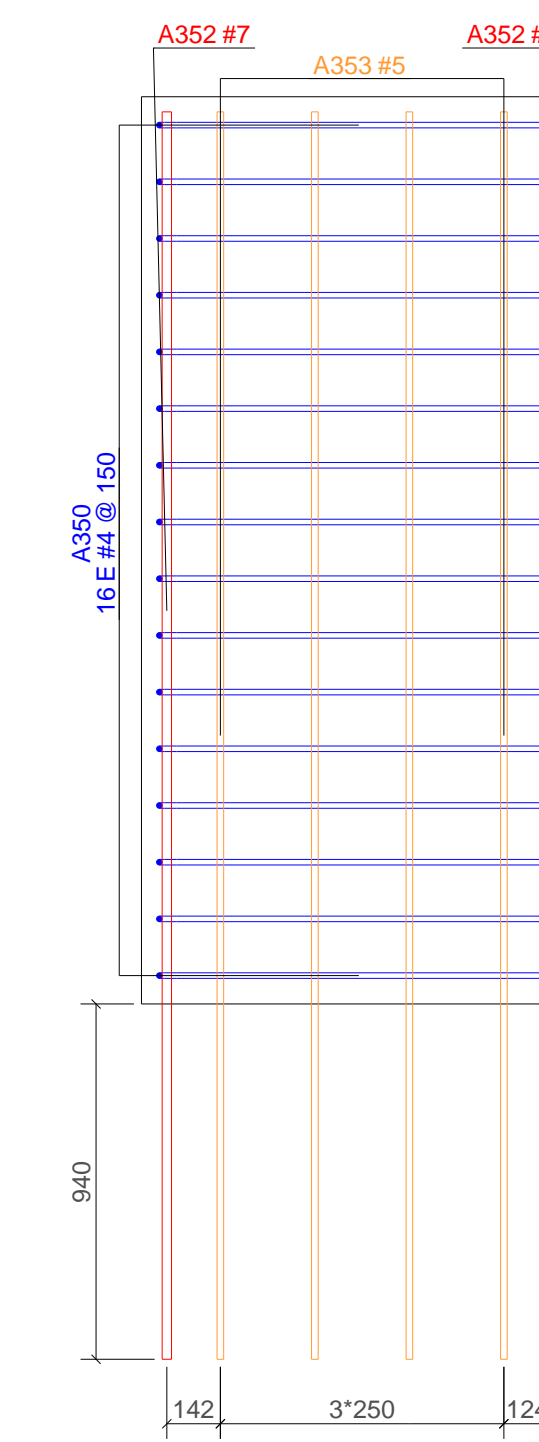


ISOMETRICO - TOPE SISMICO Y ESPALDAR EJE 1  
Esc: 1:25

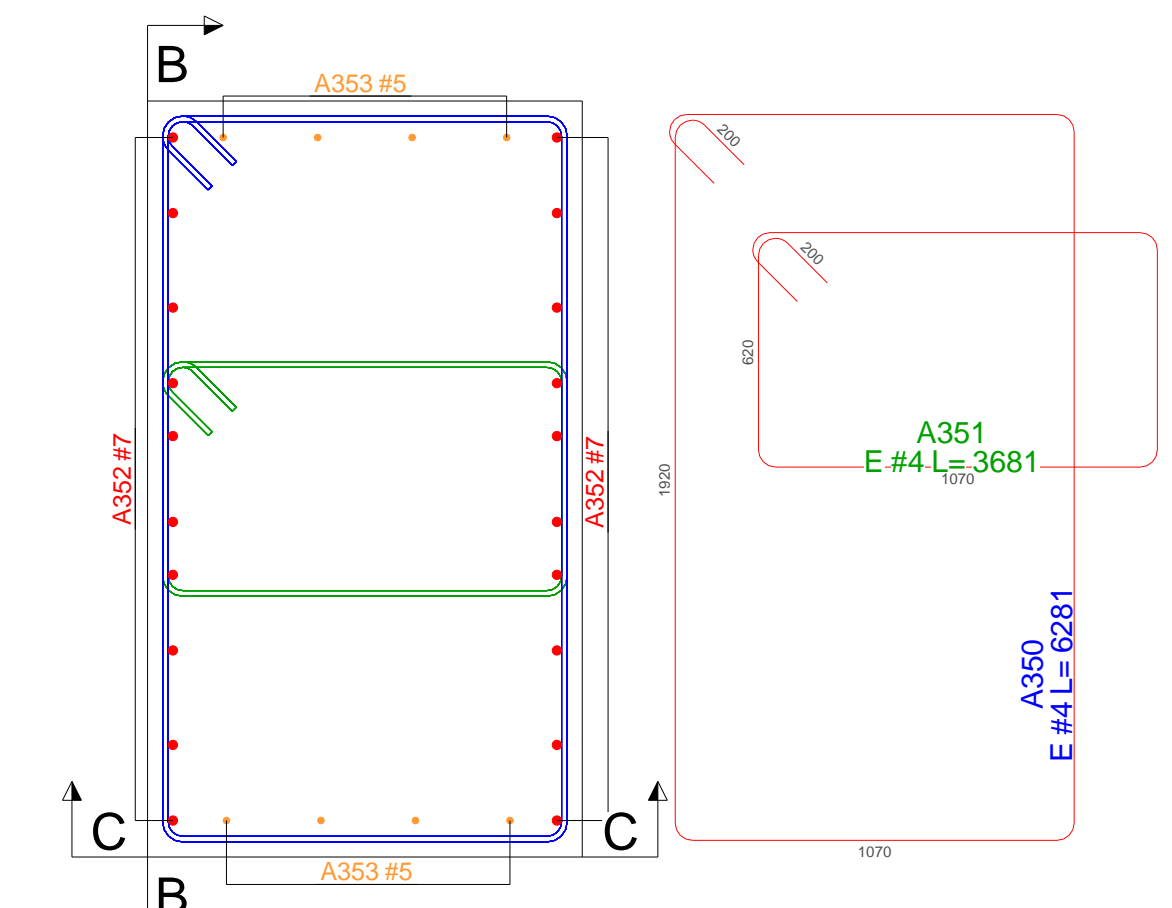


VISTA B - B  
Esc: 1:20

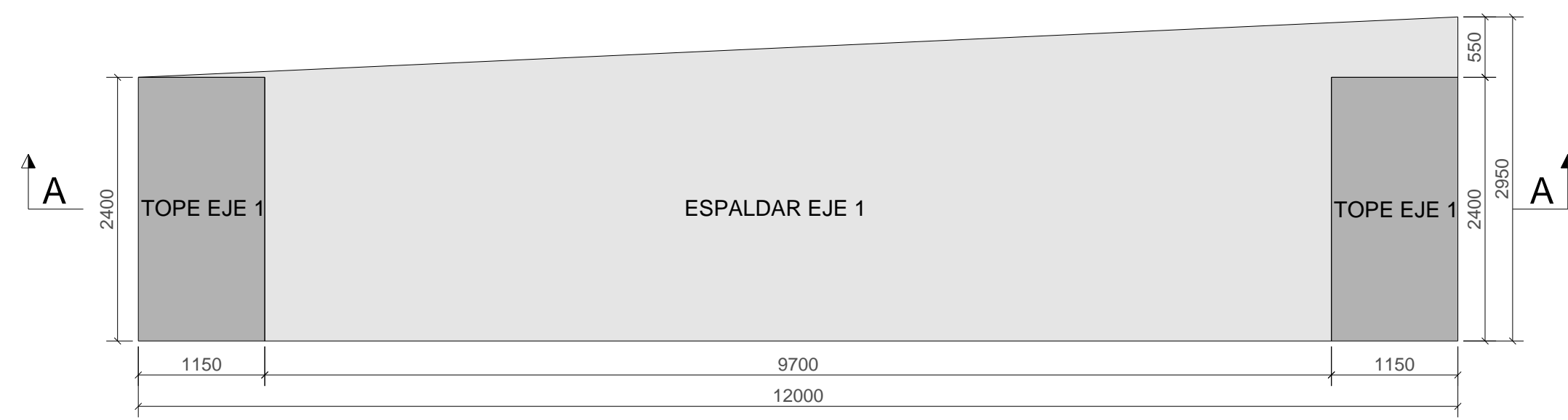


VISTA C - C  
Esc: 1:20

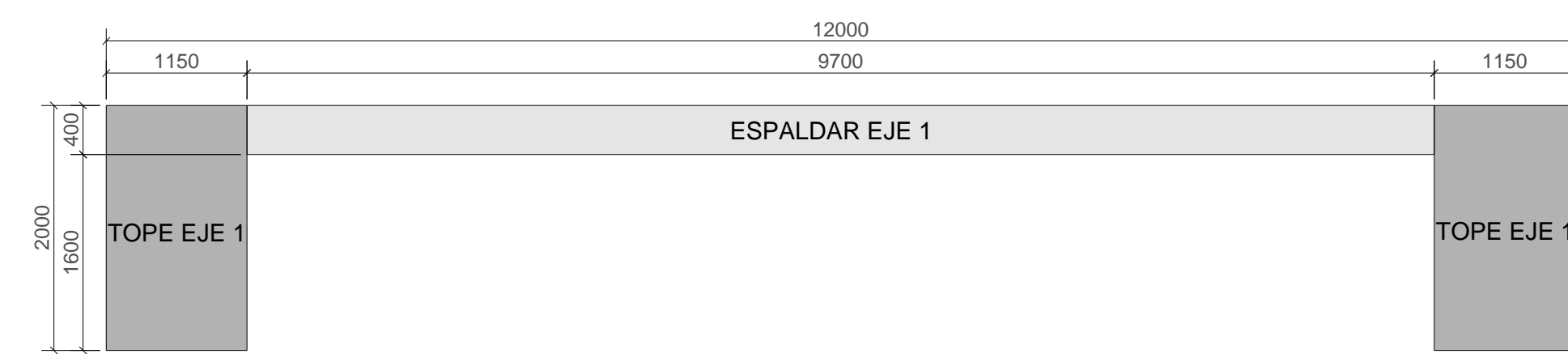
| BARRAS CON FORMA DE PLEGADO |          |              |            |                |            |              |                    |     |  |
|-----------------------------|----------|--------------|------------|----------------|------------|--------------|--------------------|-----|--|
| Tipo                        | N. Lds.  | Volumen (m³) | Peso (ton) | Acero (kg)     | Malla (kg) | Torones (kg) | Cuántia (kg/m³)    |     |  |
|                             |          | 5.52         | 13.80      | 400            |            |              | 72.46              |     |  |
| Marca                       | Diámetro | Cantidad     | Material   | Longitud Total | Peso Total | Separación   | Forma plegado      |     |  |
| A350                        | #4       | 16           | fy=420MPa  | 6180           | 98880      | 99.9         | 150                |     |  |
| A351                        | #4       | 16           | fy=420MPa  | 3580           | 57280      | 58.6         | 150                |     |  |
| A352                        | #7       | 20           | fy=420MPa  | 3300           | 66000      | 200.8        | 200                |     |  |
| A353                        | #5       | 8            | fy=420MPa  | 3300           | 26400      | 41.0         | 250                |     |  |
|                             |          |              |            |                |            |              | Peso Total barras: | 400 |  |



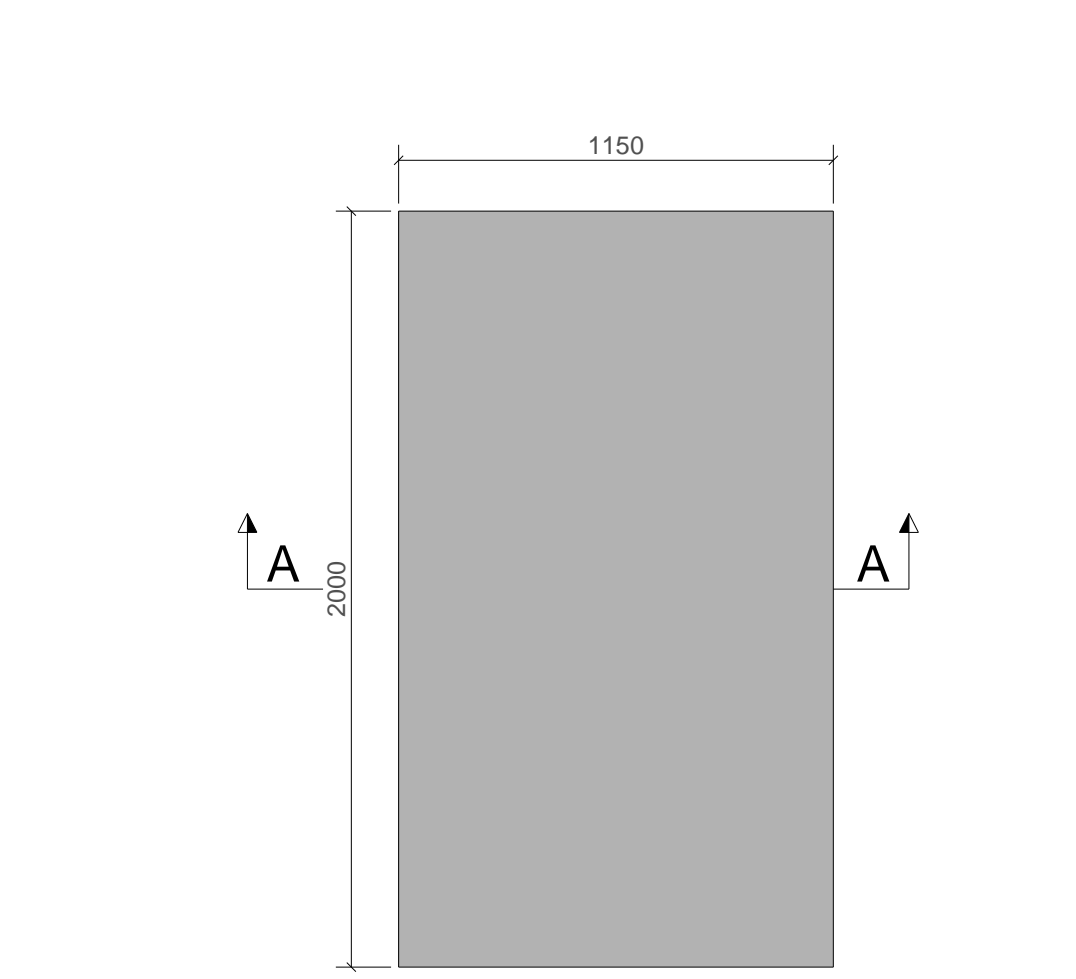
REFUERZO - SECCIÓN TOPE SISMICO EJE 1  
Esc: 1:20



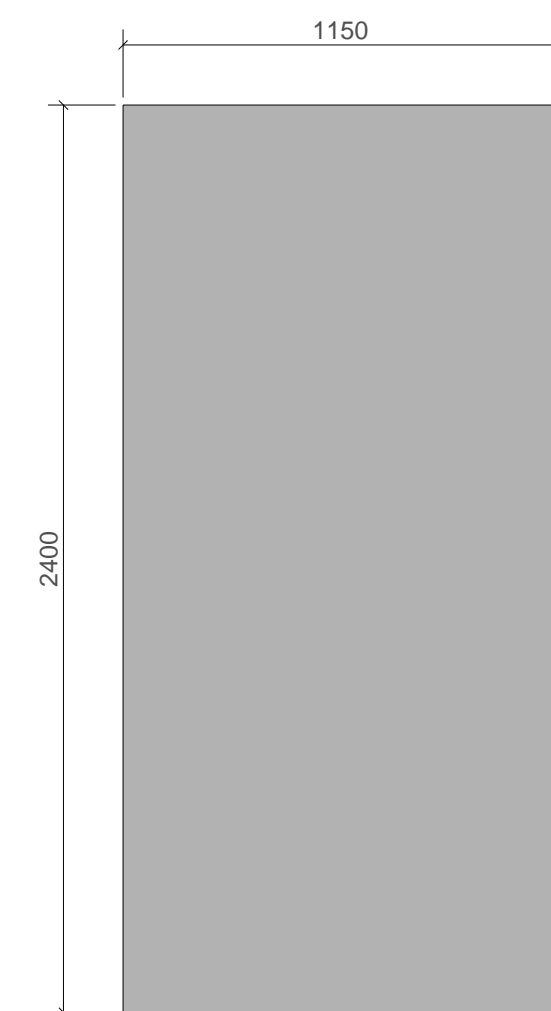
ALZADO - TOPE Y ESPALDAR EJE 1  
Esc: 1:50



CORTE D - D  
Esc: 1:50



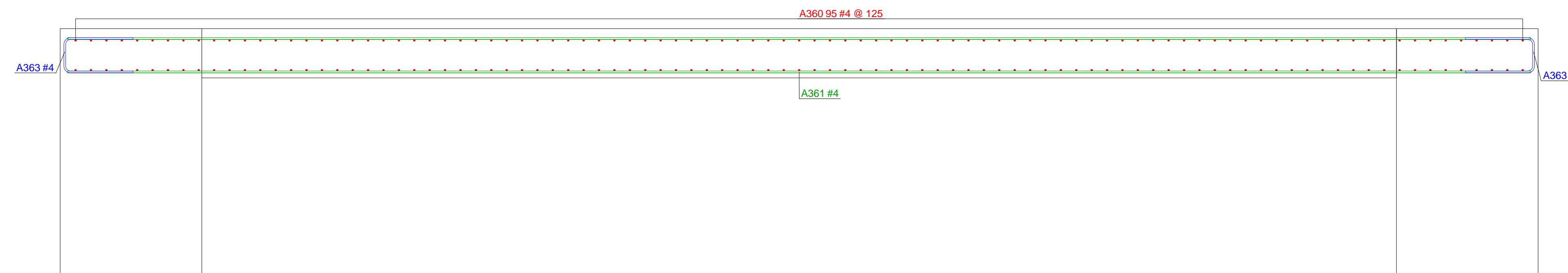
VISTA EN PLANTA - TOPE SISMICO EJE 1  
Esc: 1:20



CORTE A - A  
Esc: 1:20



REFUERZO - ALZADO ESPALDAR EJE 1  
Esc: 1:25



REFUERZO - SECCIÓN ESPALDAR EJE 1  
Esc: 1:25

| BARRAS CON FORMA DE PLEGADO |          |              |            |                |            |              |                    |     |  |
|-----------------------------|----------|--------------|------------|----------------|------------|--------------|--------------------|-----|--|
| Tipo                        | N. Lds.  | Volumen (m³) | Peso (ton) | Acero (kg)     | Malla (kg) | Torones (kg) | Cuántia (kg/m³)    |     |  |
|                             |          | 10.63        | 26.58      | 948            |            |              | 89.18              |     |  |
| Marca                       | Diámetro | Cantidad     | Material   | Longitud Total | Peso Total | Separación   | Forma plegado      |     |  |
| A360                        | #4       | 190          | fy=420MPa  | 2925           | 555750     | 603.4        | 125                |     |  |
| A361                        | #4       | 24           | fy=420MPa  | 11880          | 285120     | 283.4        | 200                |     |  |
| A362                        | #4       | 4            | fy=420MPa  | 8256           | 33024      | 24.1         | 200                |     |  |
| A363                        | #4       | 28           | fy=420MPa  | 1405           | 39340      | 37.3         | 200                |     |  |
|                             |          |              |            |                |            |              | Peso Total barras: | 948 |  |