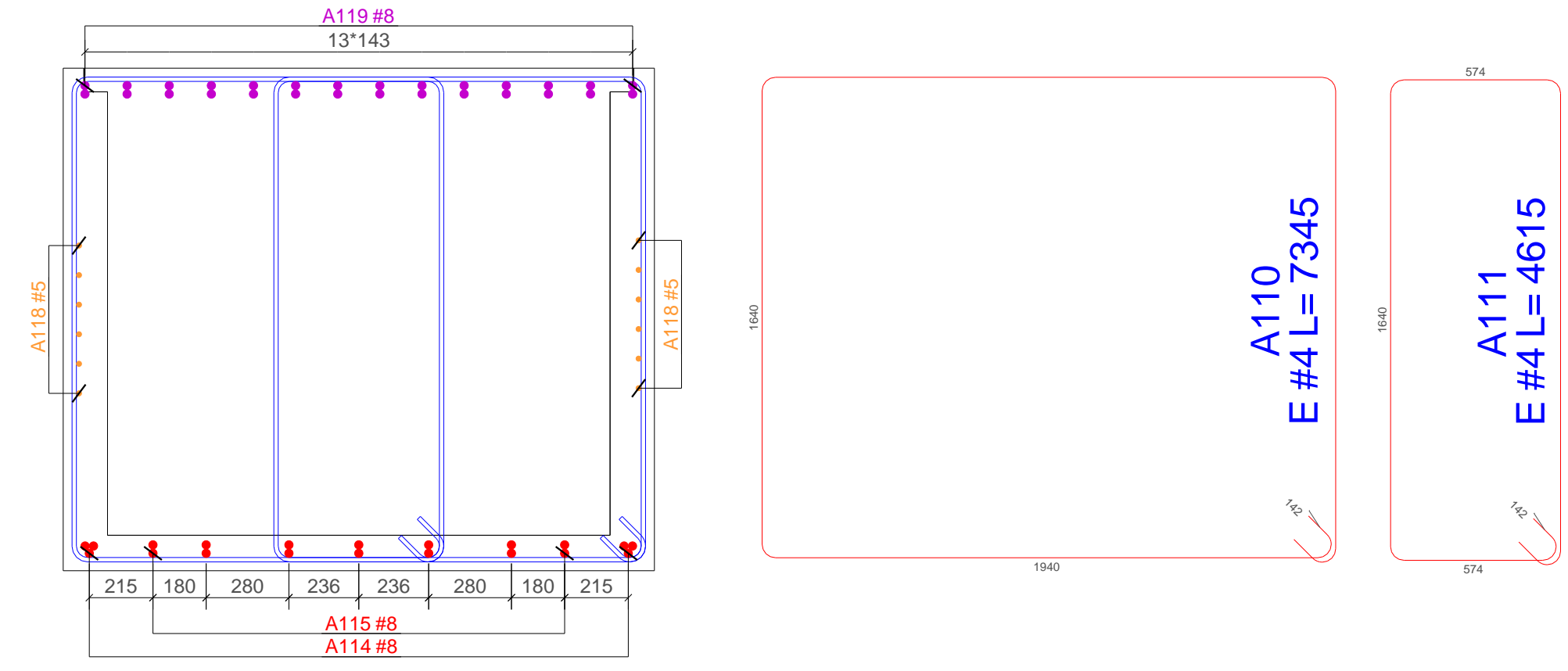
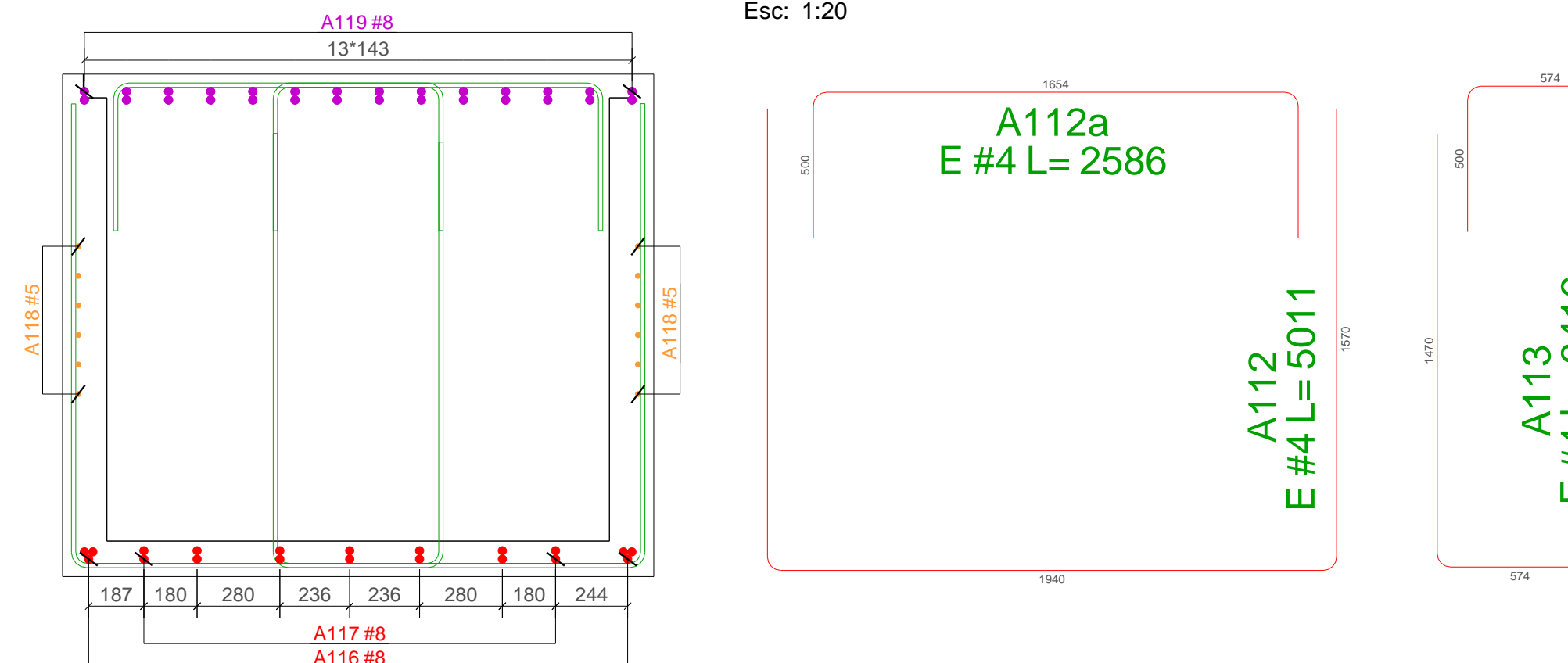


ISOMETRICO - VIGA CAJÓN EJE 2-3-4
Esc: 1:30

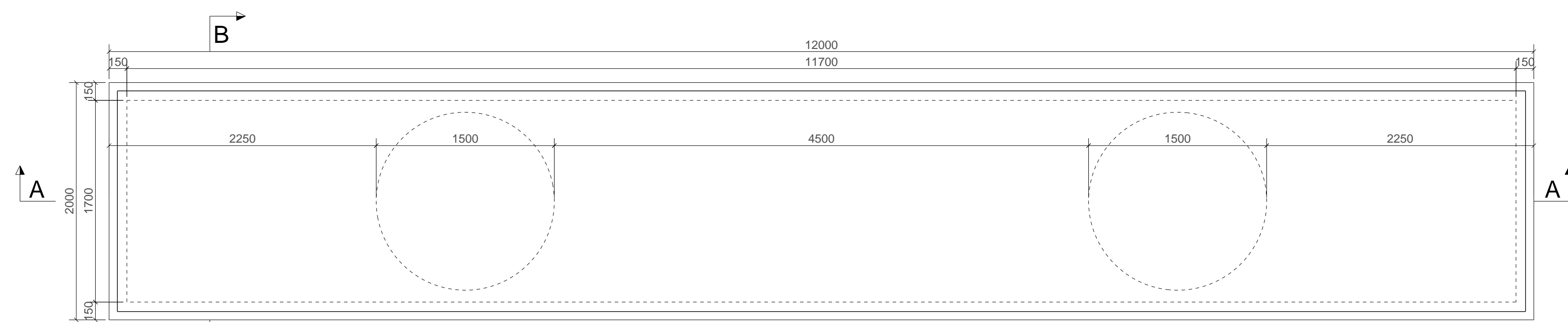


CORTE C - C
Esc: 1:20

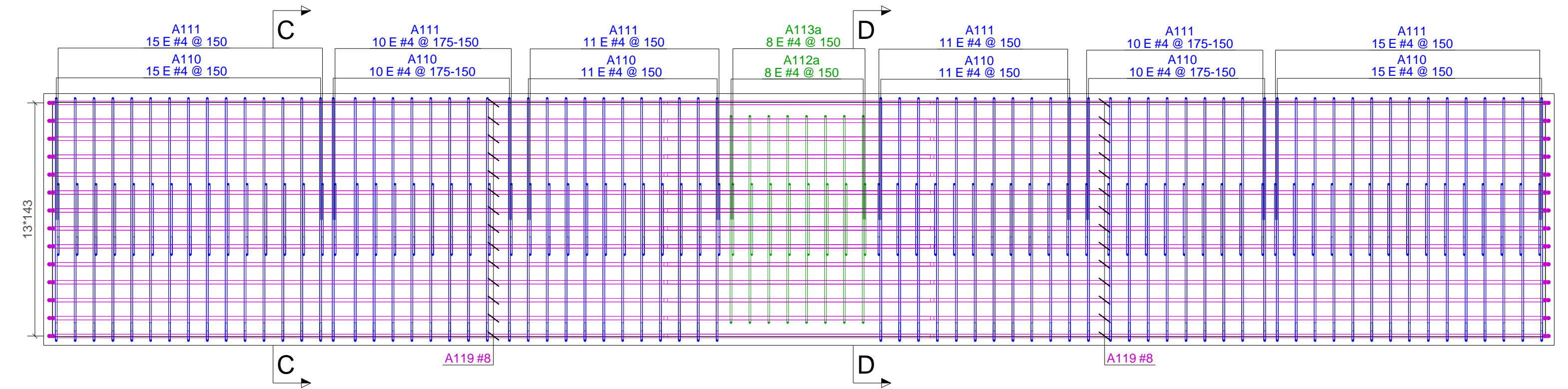


CORTE D - D
Esc: 1:20

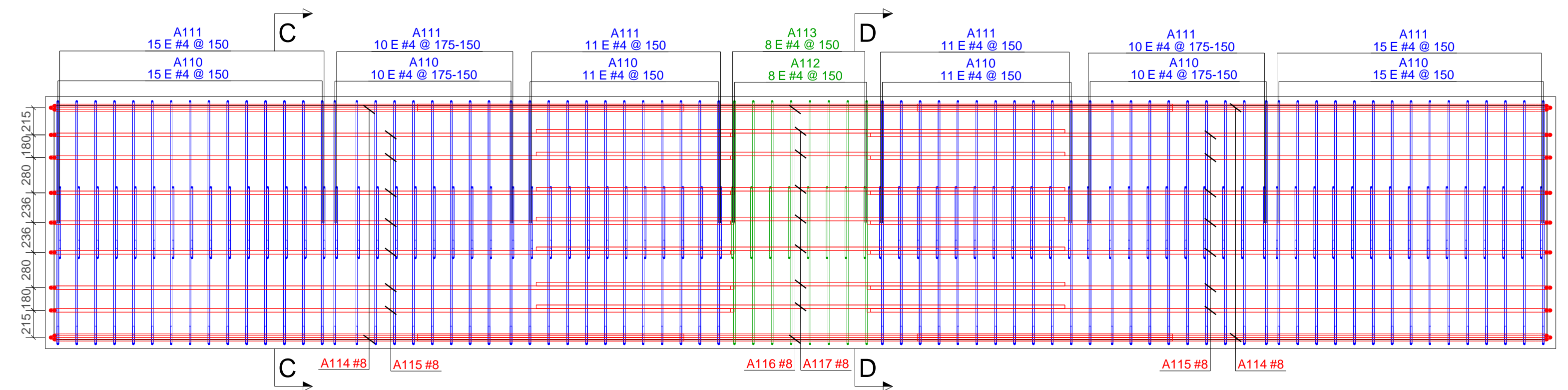
BARRAS CON FORMA DE PLEGADO							
Tipo	N. Uds.	Volumen (m³)	Peso (ton)	Acero (kg)	Malla (kg)	Torones (kg)	Cuanta (kg/m²)
A110	#4	72	131.94	4173			475.28
A111	#4	72	131.94	4173			475.28
A112	#4	8	15.23	4872			57.26
A112a	#4	8	15.23	4872			57.26
A113	#4	8	15.23	4872			57.26
A113a	#4	8	15.23	4872			57.26
A114	#8	12	244.68	7716			927.14
A115	#8	28	569.36	17788			2135.31
A116	#8	6	121.87	3858			463.03
A117	#8	14	284.74	8951			1074.07
A118	#5	24	483.68	15233			1828.88
A119	#8	56	1138.72	35603			4281.65
Peso Total barras:							4173



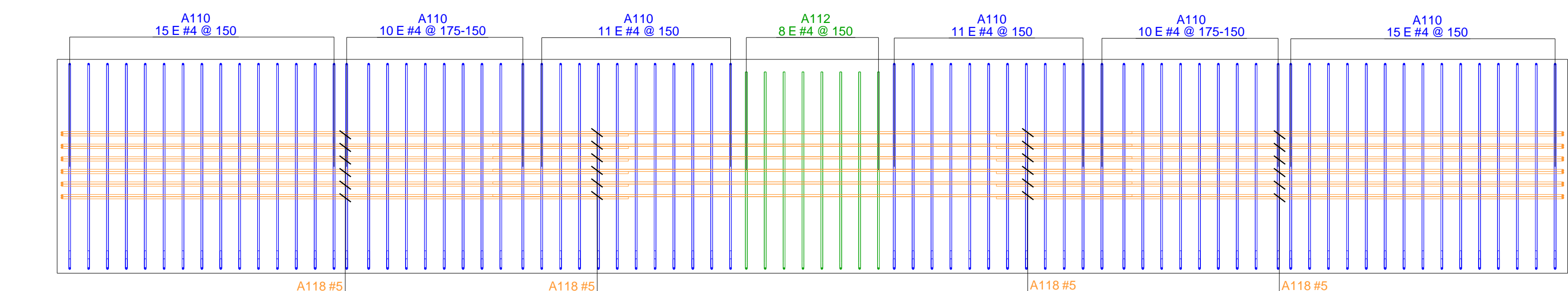
VISTA PLANTA - VIGA CAJÓN EJE 2-3-4
Esc: 1:30



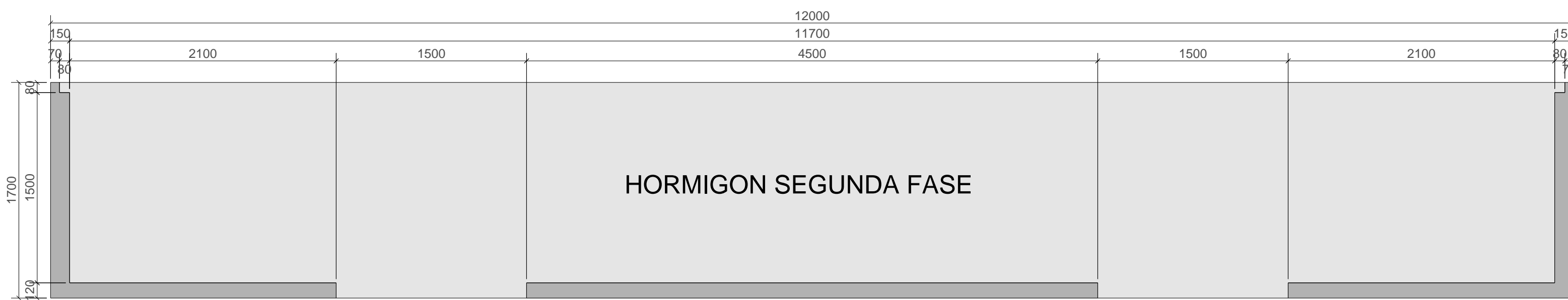
REFUERZO - VISTA SUPERIOR VIGA CAJÓN EJE 2-3-4
Esc: 1:30



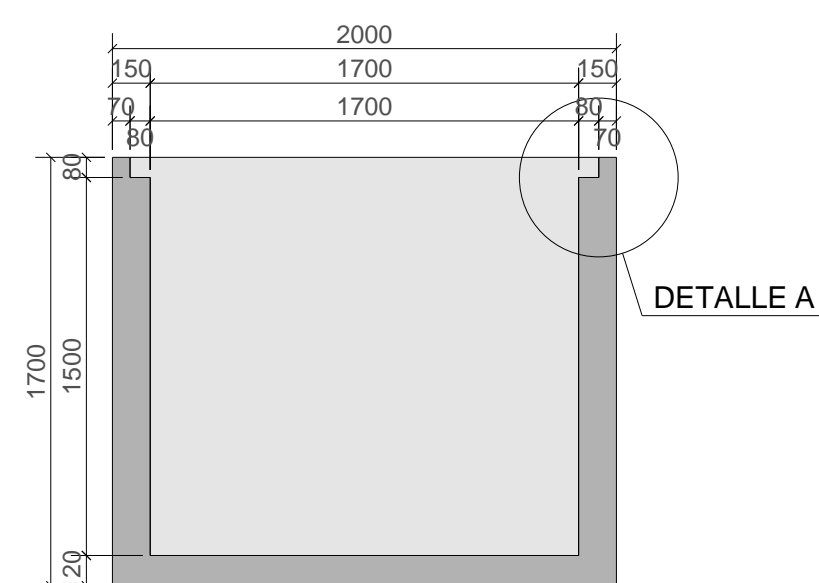
REFUERZO - VISTA INFERIOR VIGA CAJÓN EJE 2-3-4
Esc: 1:30



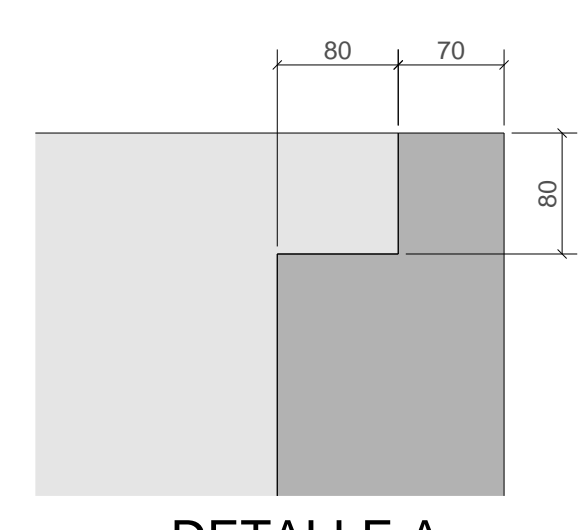
REFUERZO - VISTA LATERAL VIGA CAJÓN EJE 2-3-4
Esc: 1:30



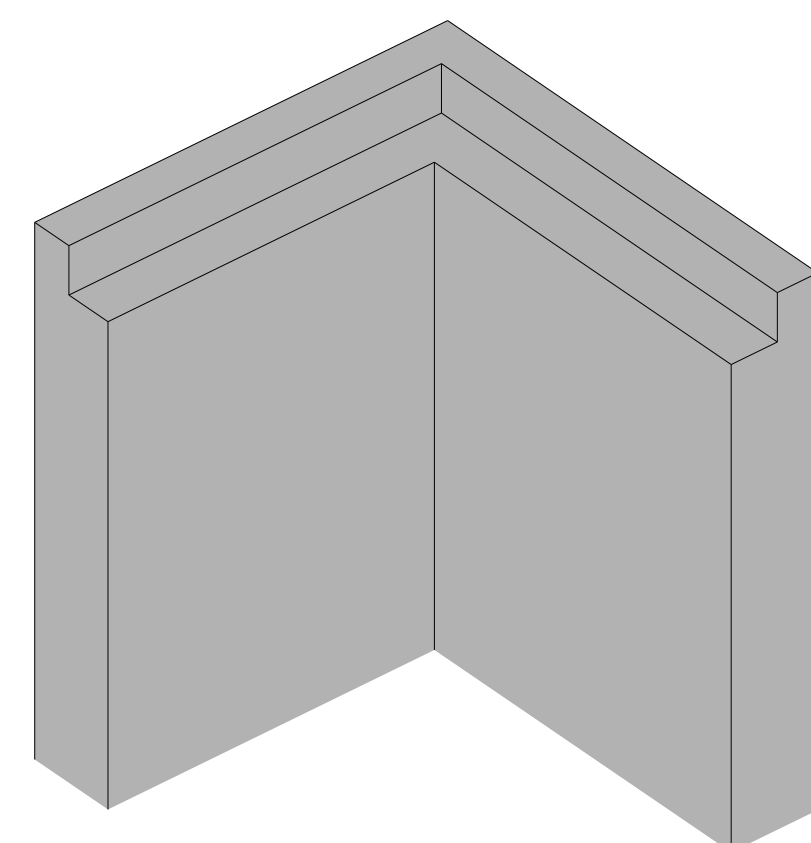
CORTE A - A
Esc: 1:30



CORTE B - B
Esc: 1:30



DETALLE A
Esc: 1:5



DETALLE B
Esc: 1:10