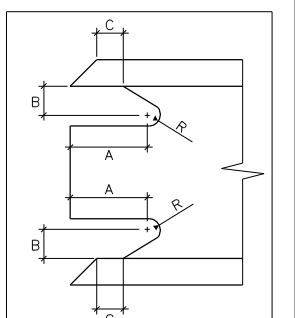
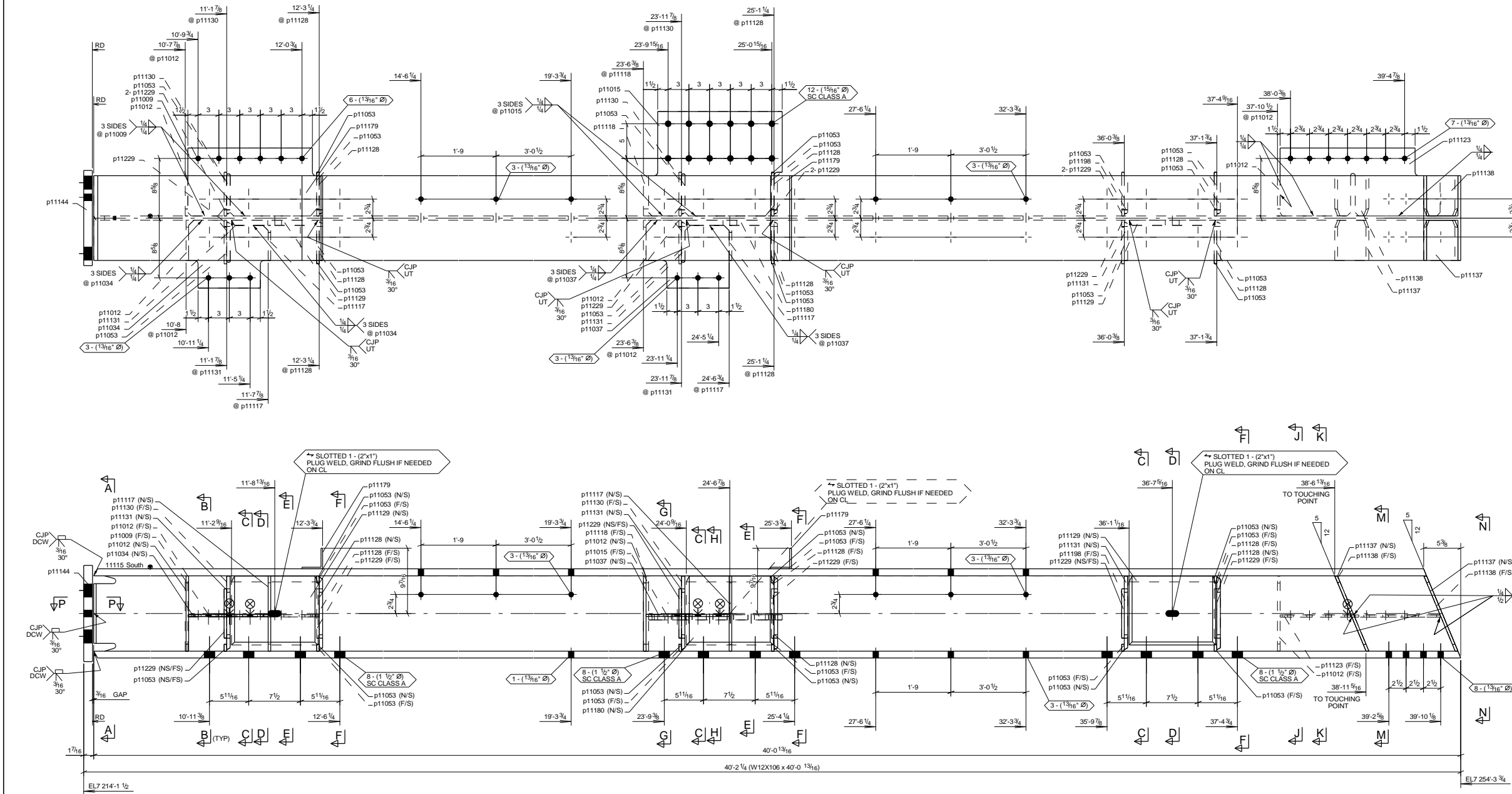


MARK	QTY	T.O.S	GRID REF	ZONE	REF.
11115	1	7254-3/34	GA2A3AL	11	E102

FABRICATOR NOTE:
SEISMIC FORCE RESISTING SYSTEM (SFRS)
FOR MEMBERS INCLUDED IN THE SEISMIC FORCE RESISTING SYSTEM (SFRS) REFER TO
SG.002 AND SD.6.50

BILL OF MATERIAL

ASB MARK	SHIPPING MARK	ASSY MARK	NO. REQ'D	DESCRIPTION	LENGTH	GRADE	WEIGHT	REMARKS
ABMC1101			1					
			11115	W2X106	40'-0 13/16"	A992	4240	BC1E
			p11009	PLS18X13/16"	1'-7"	A36	16	CS2E
			p11012	PLS8X13/16"	0'-10 7/8"	A36	26	CS2E
			p11015	PLS8X11/16"	1'-7 5/16"	A572-GR.50	57	CS2E
			p11034	PLS18X13/16"	0'-11 1/2"	A36	8	CS2E
			p11037	PLS18X13/16"	1'-0"	A36	8	CS2E
			p11053	PLS8X11"	0'-5 7/16"	A36	10	CS2E
			p11117	PLS8X11/16"	0'-10 7/8"	A36	11	CS2E
			p11118	PLS8X13/16"	0'-10 7/8"	A572-GR.50	13	CS2E
			p11123	PLS18X13/16"	1'-11 1/8"	A36	18	CS2E
			p11128	PLS12X5/8"	0'-10 1/2"	A572-GR.50	46	CS2E
			p11129	PLS8X11/16"	1'-0 1/2"	A572-GR.50	48	BC2E
			p11130	PLS12X5/8"	0'-10 11/16"	A572-GR.50	16	CS2E
			p11131	PLS12X5/8"	0'-10 11/16"	A572-GR.50	24	CS2E
			p11137	PLS8X13/16"	0'-11 7/8"	A36	14	CS2E
			p11138	PLS8X13/16"	0'-11 7/8"	A36	14	CS2E
			p11144	PLS14X13/16"	1'-1 7/8"	A572-GR.50	68	CS2E
			p11179	L3X3/4X1/4	1'-0 1/4"	A36	10	CS2E
			p11180	PLS8X13/16"	1'-0 9/16"	A572-GR.50	24	BC2E
			p11198	PLS12X5/8"	0'-10 11/16"	A572-GR.50	8	CS2E
			p11229	PLS8X11"	0'-7 1/8"	A36	7	CS2E
TOTAL =							4687	

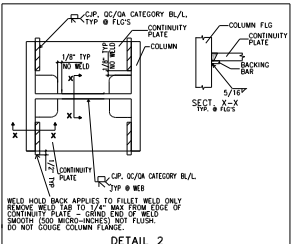


FLC THICKNESS	A	B	C	R
3/16"	1 1/8"	3/4"	1/2"	3/8"
1/4"	1 1/8"	3/4"	1/2"	3/8"
3/8"	1 1/8"	3/4"	1/2"	3/8"
7/16"	1 3/8"	3/4"	1/2"	3/8"
1/2"	1 1/2"	3/4"	1/2"	3/8"
5/8"	1 7/8"	3/4"	5/8"	3/8"
1 1/16"	2 1/16"	3/4"	1 1/16"	3/8"
3/4"	2 1/4"	3/4"	3/4"	3/8"
13/16"	2 7/16"	3/4"	13/16"	3/8"
7/8"	2 1/8"	1 1/16"	7/8"	3/8"
15/16"	2 13/16"	3/4"	15/16"	3/8"
1"	3"	3/4"	1"	3/8"
1 1/16"	3 3/16"	7/8"	1 1/16"	3/8"
1 5/16"	4"	1"	1 5/16"	3/8"
1 9/16"	4 1/16"	1 3/16"	1 9/16"	3/8"
1 7/8"	5 1/8"	1 7/16"	1 7/8"	3/8"
2"	6"	1 1/2"	2"	3/8"
2 1/2"	7 1/2"	1 7/8"	2 1/2"	3/8"
2 11/16"	8"	2"	2 11/16"	3/8"
3 3/16"	9 5/8"	2 3/8"	3 1/4"	3/8"

GENERAL NOTES

- WELDING PROCEDURES AND FILLER METALS SHALL BE IN ACCORDANCE WITH AISC 342-10, SECTION A3.4 AND 12.3
- WELD DENOTED AS "DEMAND CRITICAL WELD" (DCW), SHALL BE MADE WITH FILLER METAL CONFORMING TO THE REQUIREMENTS OF AISC 341-10, SECTION A3.4b
- NON-FUSIBLE BACKING IS PERMITTED AT CONTRACTOR'S OPTION IN ACCORDANCE WITH AISC 358-10, SECTION 3.3.5.
- WELD (RUN-OFF) TAB REMOVAL AND SURFACE FINISH REQUIREMENTS SHALL COMPLY WITH AISC 358-10, SECTION 3.4.

SHOP NOTE 1
QUALITY CONTROL (SHOP AND FIELD QC), QUALITY ASSURANCE (SPECIAL INSPECTION QA) AND NONDESTRUCTIVE TESTING (NDT) SHALL BE IN ACCORDANCE WITH AISC 341-10, CHAPTER J. ULTRASONIC (UT) TESTING IS REQUIRED ON 100% OF ALL CJP WELDS. MAGNETIC PARTICLE (MT) TESTING IS REQUIRED ON 25% OF ALL "DEMAND CRITICAL WELDS" (DCW) AND 100% MT TESTING IS REQUIRED AT THE COLUMN "k" AREA AFTER WELDING DOUBLER PLATE. MT TESTING OF THE COLUMN WEB IS REQUIRED WITHIN 3" OF THE DOUBLER PLATE WELD. AT OTHER LOCATIONS TESTING IS REQUIRED BY AISC 341-10, SECTION J6.2 REDUCTION OF NDT REQUIREMENTS MAY BE PER AISC 341-10, SECTION J6.2g AND h.



SHOP NOTE 2
METAL BACKING BARS USED IN CJP GROOVE WELDS BETWEEN CONTINUITY PLATE AND COLUMN SHALL BE LEFT IN PLACE AND WELDED TO THE COLUMN WITH A CONTINUOUS 5/16" FILLET WELD - SEE DETAIL 1

WORK THIS DWG WITH-11115-1
ALL WELDS ARE OF SFRS FRAMING



Profile	d	b	t	w	k
W12X106	12 7/8"	12 1/4"	1 1/4"	5/8"	1 7/8"

PAINT TYPE

NO PAINT

SP-3

11/02/2023 RELEASED FOR FABRICATION
05/11/2023 ISSUED FOR APPROVAL
NO BACK CHARGES WILL BE ACCEPTED WITHOUT PRIOR AUTHORIZATION IN WRITING

NOTE:

MATERIAL: A992 (U.O.)
BOLT: A325 (U.O.)
HOLE SIZE: 13/16"

SPC: SP-3
WELD: 3/16" (U.O.)
ELECTRODE: E7018 OR E71T

ALLIED STEEL

Anatomic Steel Detailing IRON

JOB NAME & LOCATION: VP2 - YELLOWSTONE CLUB VILLAGE PHASE 2 - BLDG.5
1 Yellowstone Club Trail, Big Sky, MT59716

ARCH: Hart Howerton
ENGR: DCI - Engineers
CONTR: TBD

REF: E102
DRAWN BY: HS 05/11/2023
SHEET TITLE: COLUMN

CHECKED BY: RHB 05/11/2023

JOB NO: 2252
DWG. NO: 11115