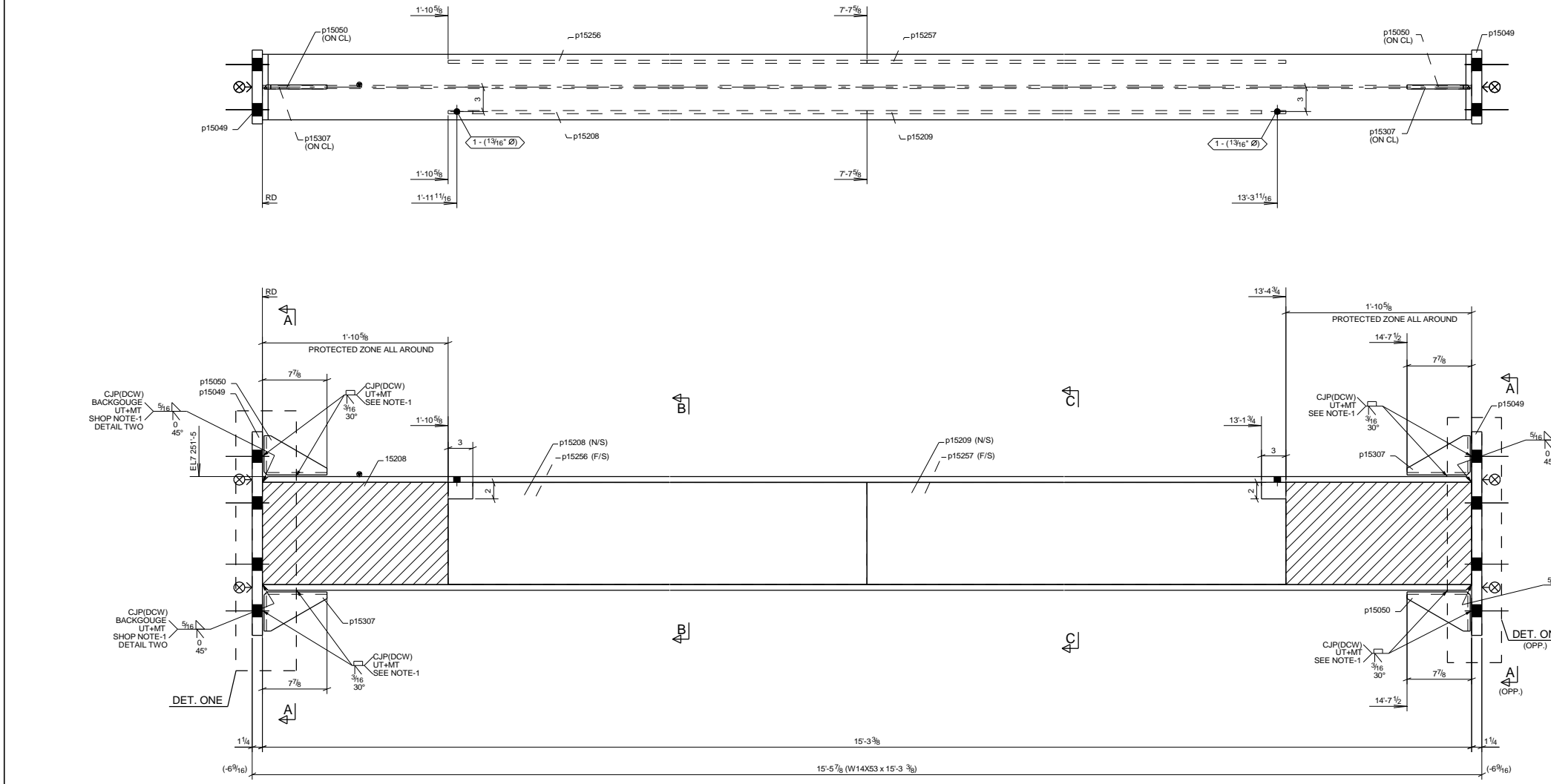


MARK	QTY	T.O.S	GRID REF	ZONE	REF.
15208	1	725'-5"	A3-A4/AL	15	E1501

FABRICATOR NOTE:
SEISMIC FORCE RESISTING SYSTEM (SFRS)
FOR MEMBERS INCLUDED IN THE SEISMIC FORCE RESISTING SYSTEM (SFRS) REFER TO
SG.002 AND SD.6.50

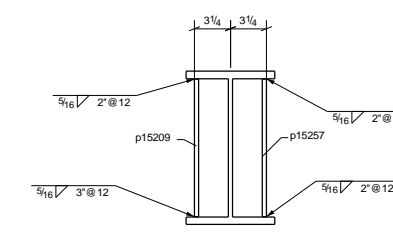
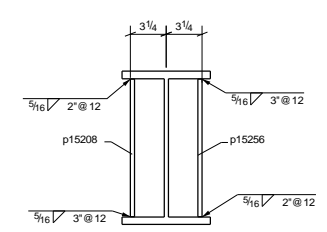
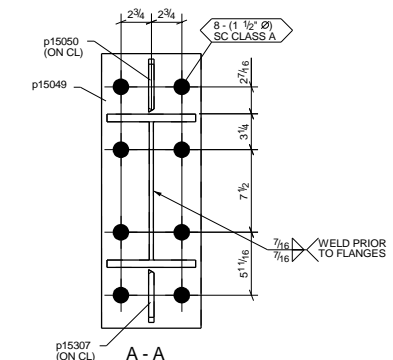
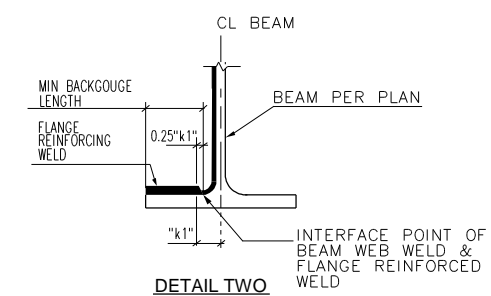
BILL OF MATERIAL									
ASSEMBLY MARK	SHIPPING MARK	ASSY MARK	NO. REQD	DESCRIPTION	LENGTH	GRADE	WEIGHT	REMARKS	
ABMB1500	15208		1						
		p15049	1	W14X53	15'-3 3/8"	A992	814		CS2E
		p15049	2	PL 1/4"x8"	2'-0 7/8"	A572-GR.50	158		CS2E
		p15050	2	PL 1/2"x13/16"	0'-7 11/16"	A572-GR.50	6		BC1E
		p15208	1	PL 3/8"x12 7/16"	5'-9"	A36	91		CS2E
		p15209	1	PL 3/8"x12 7/16"	5'-9 1/8"	A36	91		CS2E
		p15256	1	PL 3/8"x12 7/16"	5'-9"	A36	91		CS2E
		p15257	1	PL 3/8"x12 7/16"	5'-9 1/8"	A36	91		CS2E
		p15307	2	PL 1/2"x13/16"	0'-7 11/16"	A572-GR.50	6		BC1E
							TOTAL =	1348	
BOLT SUMMARY - QTY'S ARE FOR ONE ASSEMBLY ONLY									
ASSEMBLY	NO. REQD	DIA.	LENGTH	WORKSHOP SITE	BOLT GRADE	REMARKS			
15208	16	1 3/8"	4 1/2"	Site	A490/PLAIN/HEAVY HEX	SC CLASS A			



SHOP NOTE 1
QUALITY CONTROL (SHOP AND FIELD QC), QUALITY ASSURANCE (SPECIAL INSPECTION QA) AND NONDESTRUCTIVE TESTING (NDT) SHALL BE IN ACCORDANCE WITH AISC 341-10, CHAPTER J. ULTRASONIC (UT) TESTING IS REQUIRED ON 100% OF ALL CJP WELDS. MAGNETIC PARTICLE (MT) TESTING IS REQUIRED ON 25% OF ALL "DEMAND CRITICAL WELDS" (DCW) AND 100% MT TESTING IS REQUIRED AT THE COLUMN "k" AREA AFTER WELDING DOUBLER PLATE. MT TESTING OF THE COLUMN WEB IS REQUIRED WITHIN 3" OF THE DOUBLER PLATE WELD. AT OTHER LOCATIONS TESTING IS REQUIRED BY AISC 341-10, SECTION J6.2 REDUCTION OF NDT REQUIREMENTS MAY BE PER AISC 341-10, SECTION J6.2g AND h.

GENERAL NOTES
1) WELDING PROCEDURES AND FILLER METALS SHALL BE IN ACCORDANCE WITH AISC 342-10, SECTION A3.4 AND 12.3
2) WELD DENOTED AS "DEMAND CRITICAL WELD" (DCW), SHALL BE MADE WITH FILLER METAL CONFORMING TO THE REQUIREMENTS OF AISC 341-10, SECTION A3.4b
3) NON-FUSIBLE BACKING IS PERMITTED AT CONTRACTOR'S OPTION IN ACCORDANCE WITH AISC 358-10, SECTION 3.3.5.
4) WELD (RUN-OFF) TAB REMOVAL AND SURFACE FINISH REQUIREMENTS SHALL COMPLY WITH AISC 358-10, SECTION 3.4.

PROTECTED ZONE NOTES:
-PROTECTED ZONES SHALL BE PAINTED ON ALL SIDES IN "SAFETY YELLOW" PAINT.
-PAINT IN 2" HIGH BLACK LETTERS "PROTECTED ZONE-NO FASTENERS PERMITTED" EACH SIDE.
-PROTECTED ZONE MARKINGS ARE REQUIRED BEFORE AND AFTER FIREPROOFING.



1 BEAM MARK: 15208

Profile	d	b	t	w	k
W14X53	13 7/8"	8"	1 1/16"	1 3/8"	1 1/2"

HOLE PATTERNS NOTED "SLIP CRITICAL" SC CLASS A/SC CLASS B/SC CLASS C SHALL BE PREPARED TO SATISFY SC CONNECTIONS. THE CONTACT SURFACE (CONNECTION SIDE) SHALL BE UNCOATED WITHIN 3" OF THOSE HOLES. CONTACT SURFACES ARE TO BE FREE OF BURRS AND ALL FOREIGN MATERIAL. @NOTES FAYING SURFACES

PAINT TYPE	
NO PAINT	
SP-3	

11/02/2023	RELEASED FOR FABRICATION
06/07/2023	ISSUED FOR APPROVAL
NO BACK CHARGES WILL BE ACCEPTED WITHOUT PRIOR AUTHORIZATION IN WRITING	
NOTE:	
MATERIAL: A992 (U.N.O.)	SPC: SP-3
BOLT: A325 (U.N.O.)	WELD: 3/16" (U.N.O.)
HOLE SIZE: 13/16"	ELECTRODE: E7018 OR E71T
JOB NAME & LOCATION: VP2 - YELLOWSTONE CLUB VILLAGE PHASE 2 - BLDG.5 1 Yellowstone Club Trail, Big Sky, MT59716	
ARCH: Hart Howerton	ENGR: DCI - Engineers
CONTR: TBD	
REF: E1501	JOB NO: 2252
DRAWN BY: HS 06/07/2023	CHECKED BY: RHB 06/07/2023
SHEET TITLE: BEAM	DWG. NO: 15208