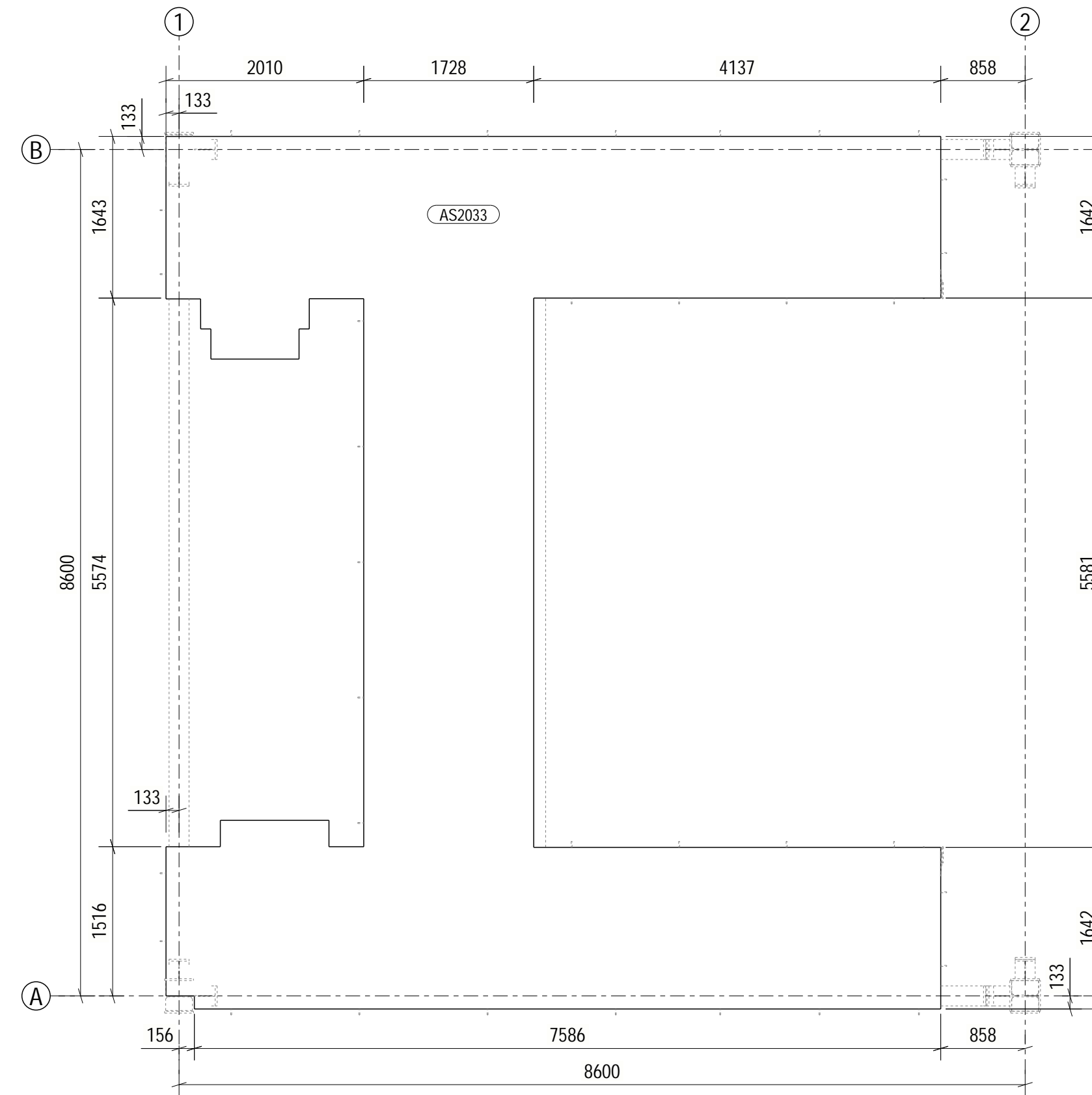
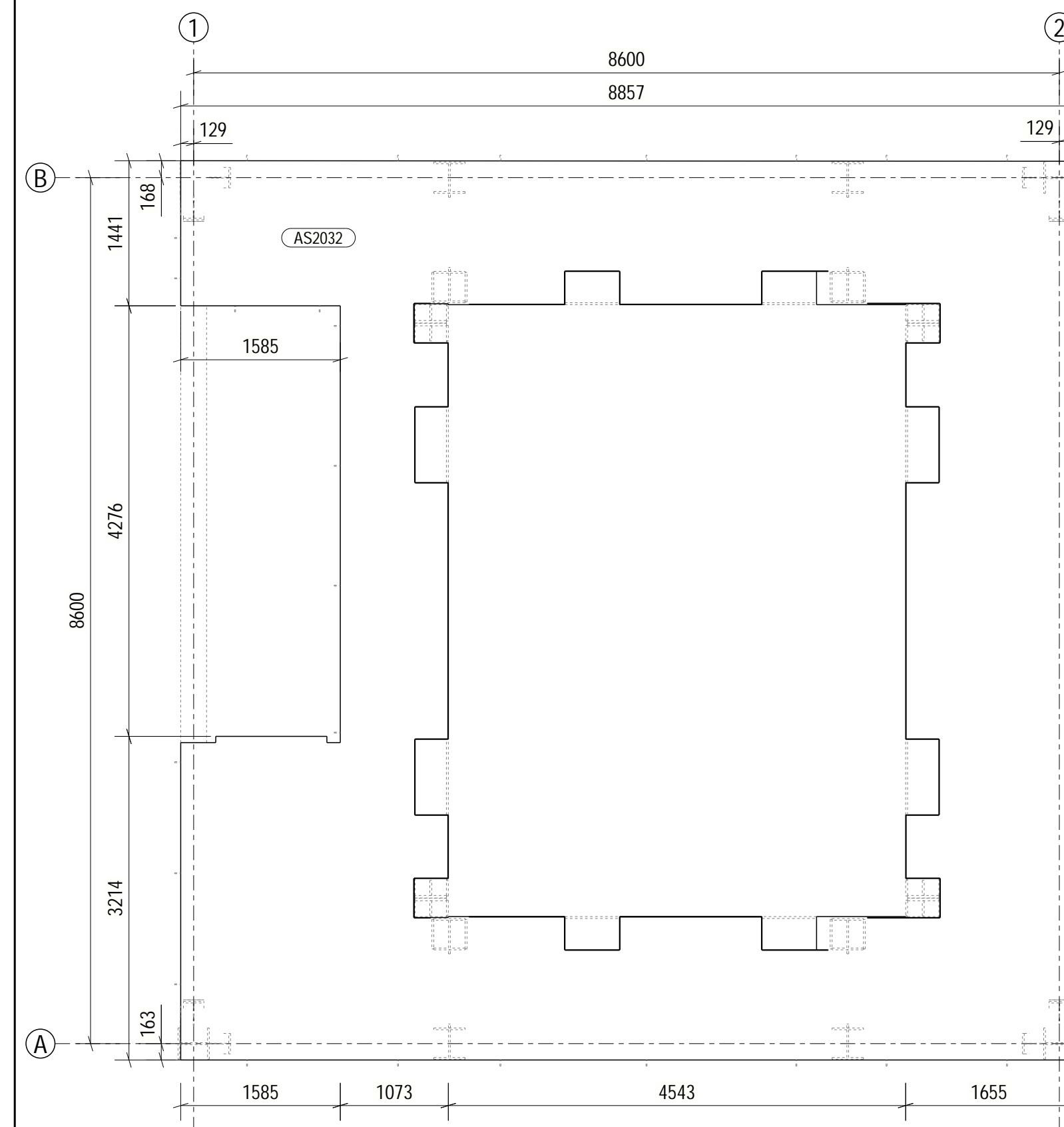


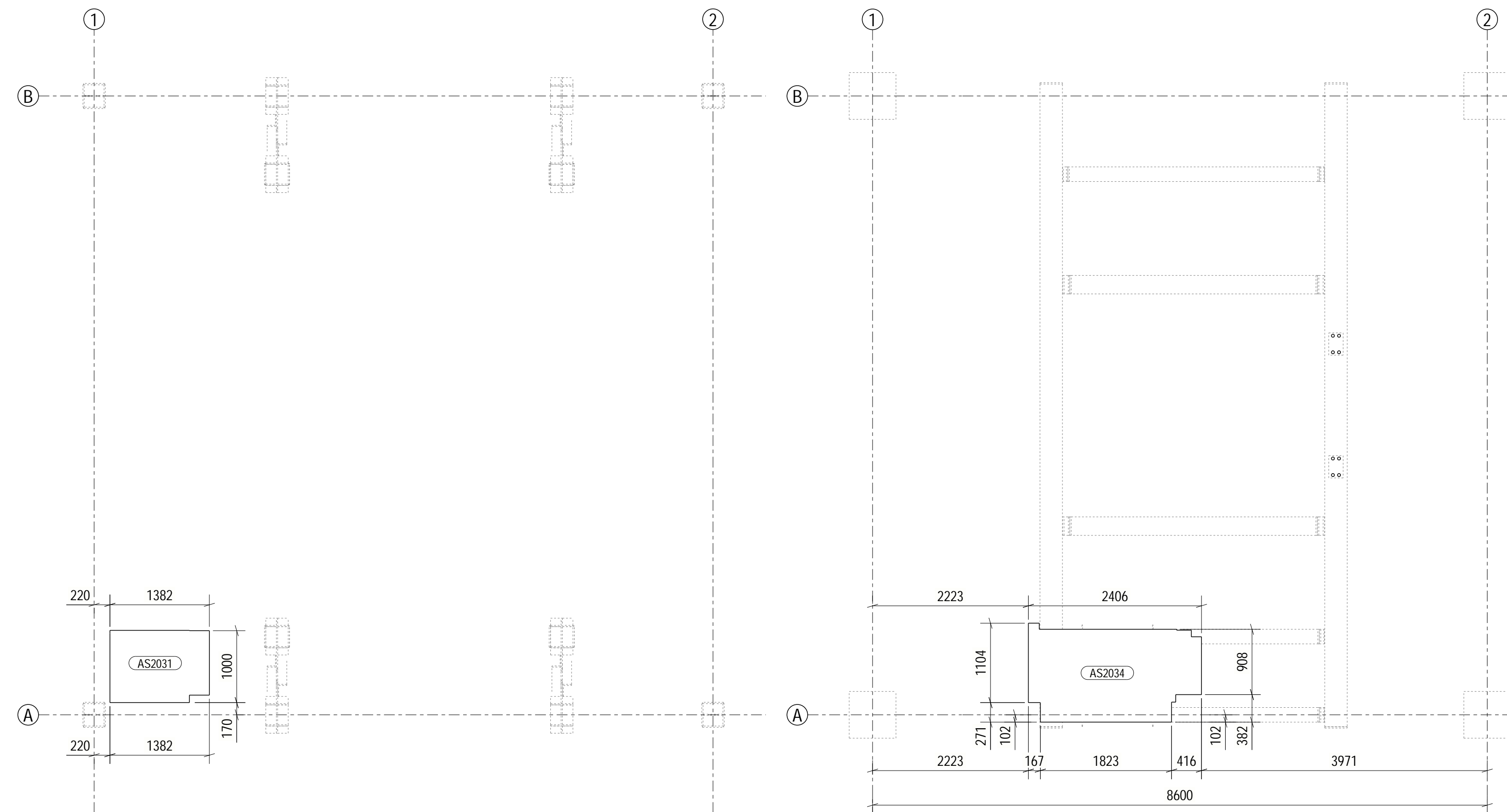
3D - TEAR PLATE
N/S



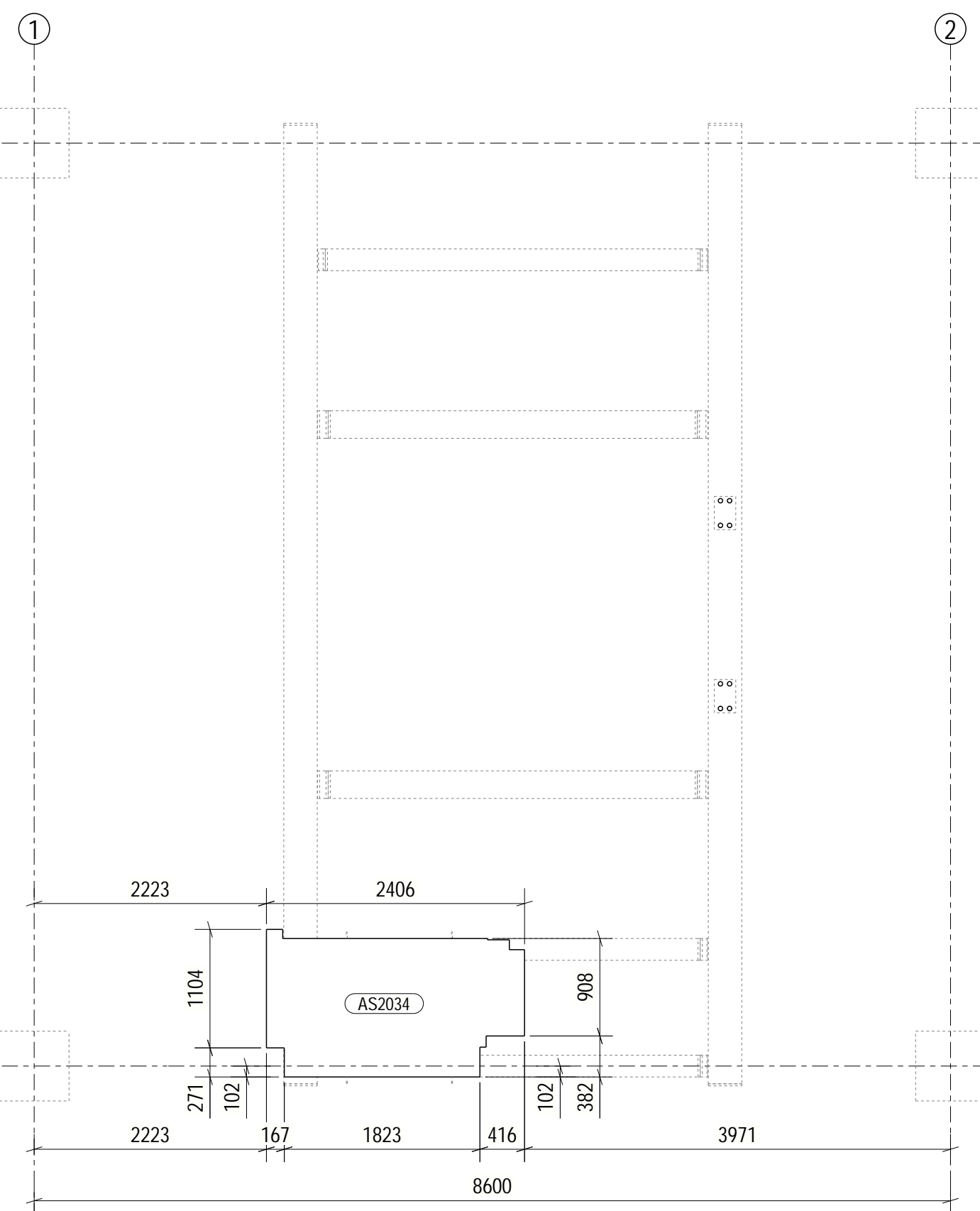
ELEV. +12.850 (TEAR PLATE)
S: 1:50



ELEV. +15.860 (TEAR PLATE)
S: 1:50



ELEV. +16.568 (TEAR PLATE)
S: 1:50



ELEV. +17.266 (TEAR PLATE)
S: 1:50

KEY PLAN

REFERENCE DRAWINGS

| DRAWING NAME | DRAWING N° |
|--------------|------------|
| | |

NOTES:
 1. ALL DIMENSIONS ARE IN MILLIMETERS. UNLESS OTHERWISE INDICATED, ALL DIMENSIONS ARE OF THE AXIS OF PILLARS AND BEAMS, OF THE BACK OF U-TYPE BEAMS AND ANGLES. THE WORKING POINTS OF THE BRACES WILL BE IN THE CENTER OF THE BEAM OR COLUMN UNLESS OTHERWISE INDICATED.
 GENERAL STRUCTURE NOTES:
 * THE STEEL OF THE PROFILES WILL BE A-572 Gr50 AND PLATES WILL BE A-36.
 * IN THE AREAS OF WATER ACCUMULATION, DRAINAGE HOLES OF Ø14 mm WILL BE DONE FOR ITS EVACUATION.
 BOLTS NOTES:
 * THE BOLTS OF THE MAIN STRUCTURE WILL BE OF HIGH RESISTENCE. ACORDING TO ASTM A325
 * THE BOLTS OF EXCHANGER STRUCTURE WILL BE OF HIGH RESISTENCE ACCORDING TO... ASTM A325
 * FOR ASSEMBLY, THE SCREWS SHALL BE TIGHTENED TO THE "FULL TIGHT" CONDITION, WITHOUT PRETENSIONING THE SCREW.
 1 NUT AND 2 WASHERS WILL BE PLACED ON ALL SCREWS.
 THE FINISH OF THE SCREWS WILL BE GALVANIZED.

| | | | | | |
|-----|----------|---------------------------|------|------|-------|
| 0 | 02/12/22 | APPROVED FOR CONSTRUCTION | MAR | SGM | DVA |
| REV | DATE | DESCRIPTION | DRWN | CHKD | APPRD |



| | | | | | |
|---|-----------|--------------------|------------|----------|------|
| TITLE: | | TORRE Y HORNO | | | |
| <small>This drawing is owned by IDEA INGENIERIA and it will be used only confidentially by authorized staff under the current legislation. Any reproduction, dissemination or delivery to third parties is totally prohibited and its return will be immediately requested.</small> | | | | | |
| SITUATION: | PREPARED: | MAR | 02.12.2022 | | |
| PLAN TYPE: | VERIFIED: | SGM | 12/02/2022 | | |
| DRAWING NAME: | APPROVED: | DVA | 12/02/2022 | | |
| SCALE: | FORM: | DRAWING N°: | SHEET: | PROJECT: | REV: |
| 1:50 | A0 | 22127-M-EST-20-001 | 018 | 22127 | 0 |