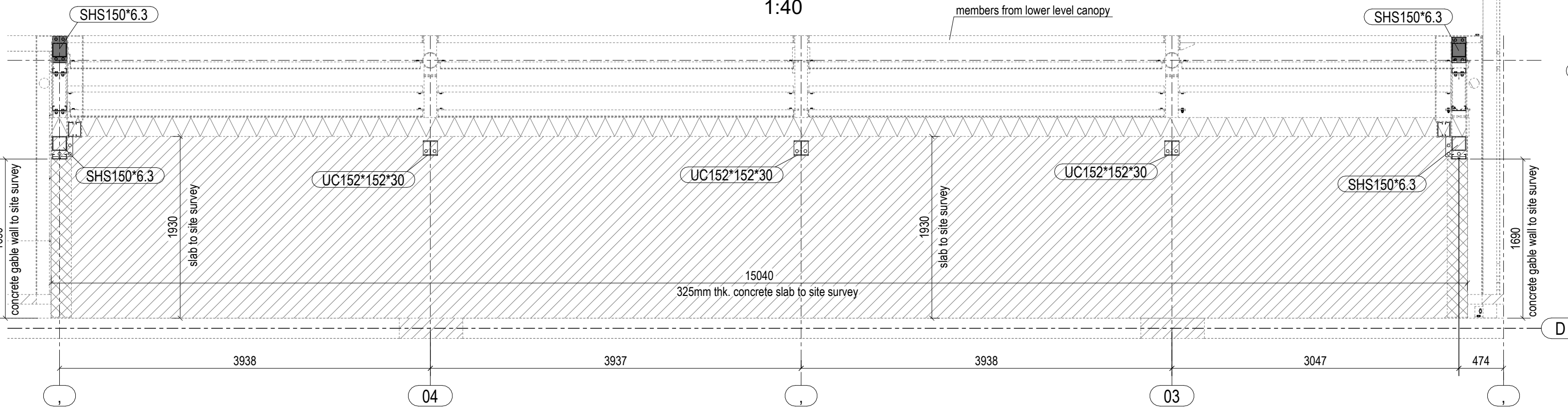


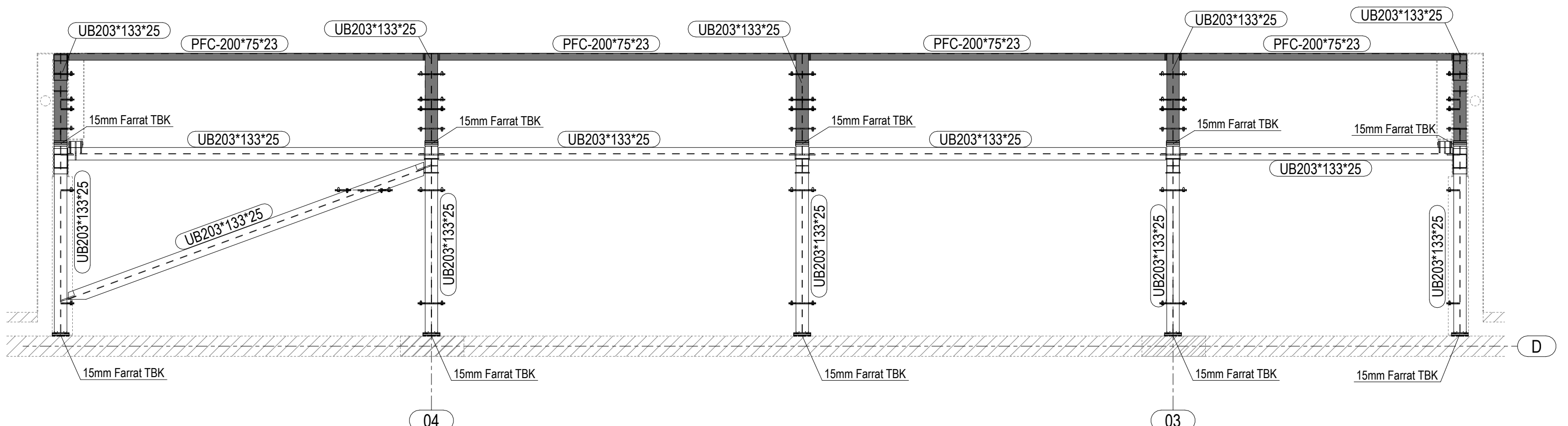
Column Plan - 1st floor

1:40



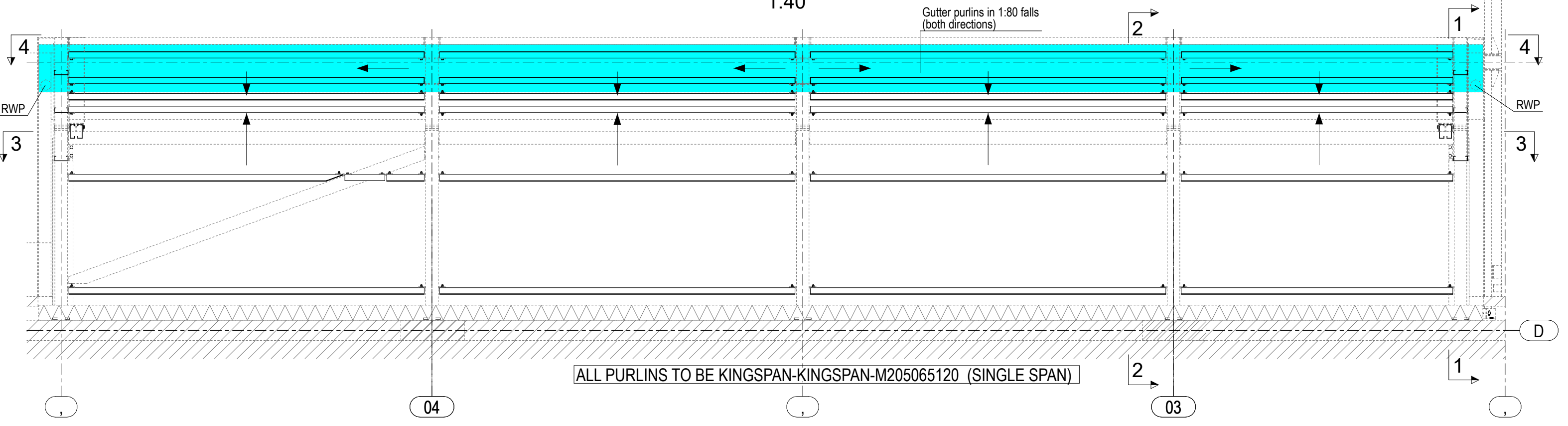
Main structure Plan - 1st floor

1:40

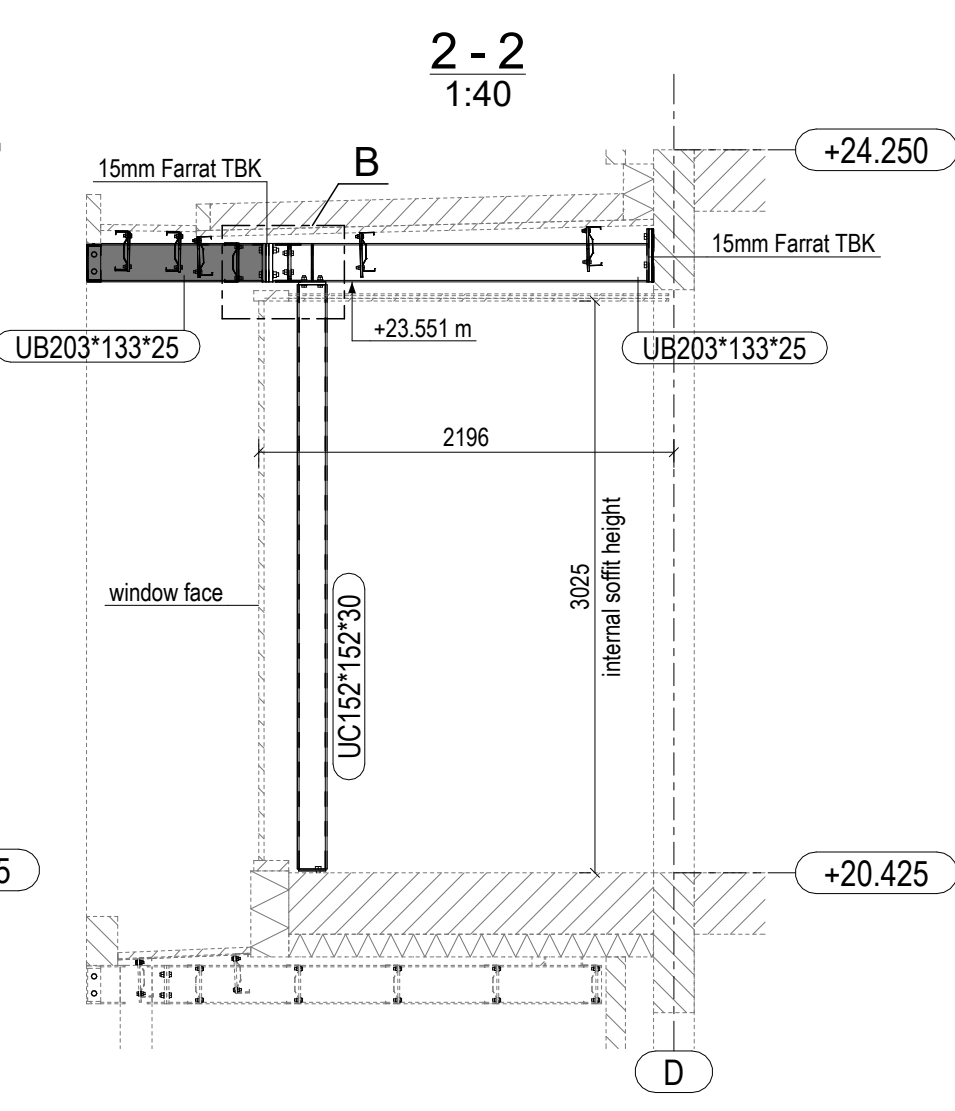
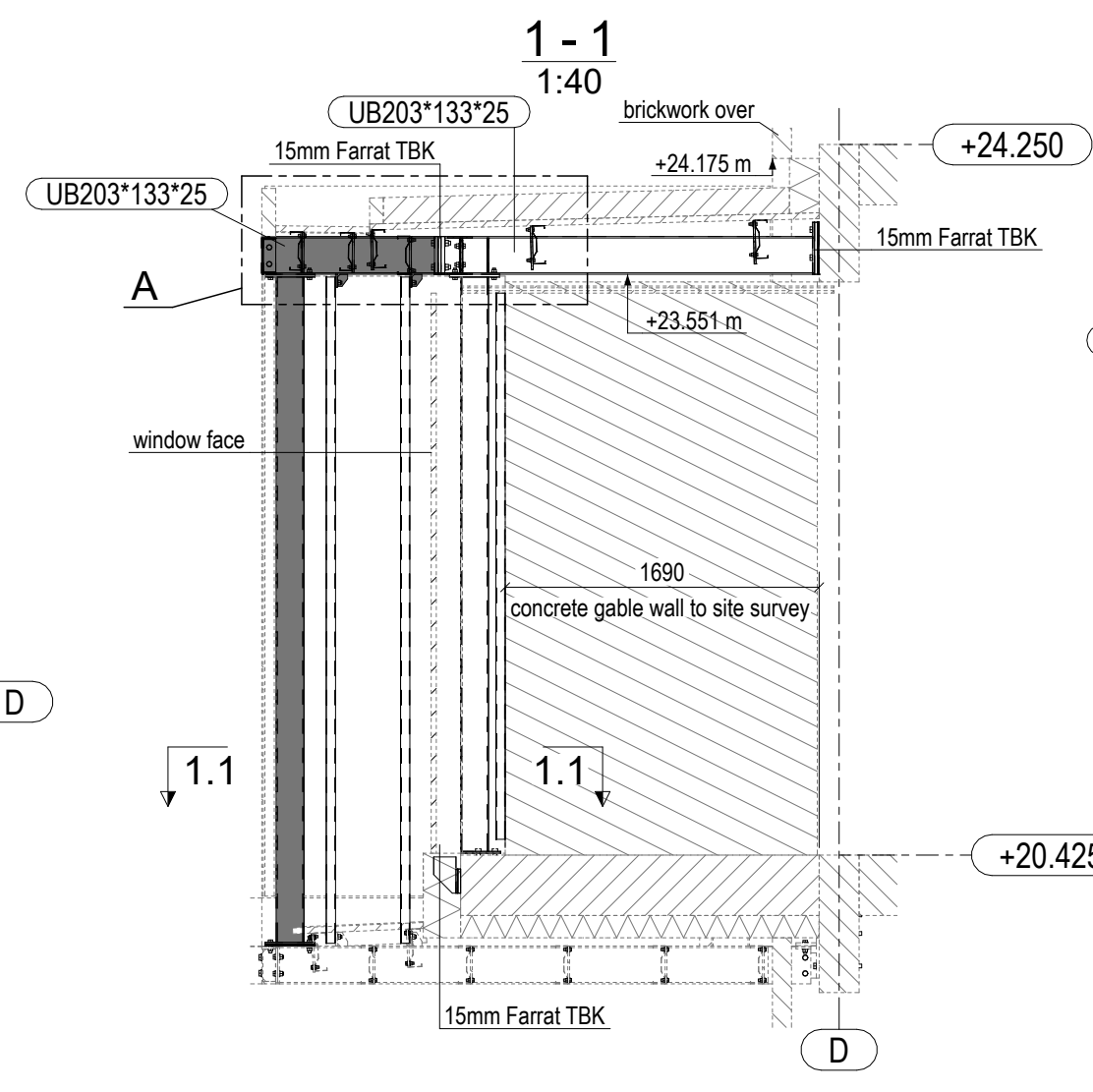
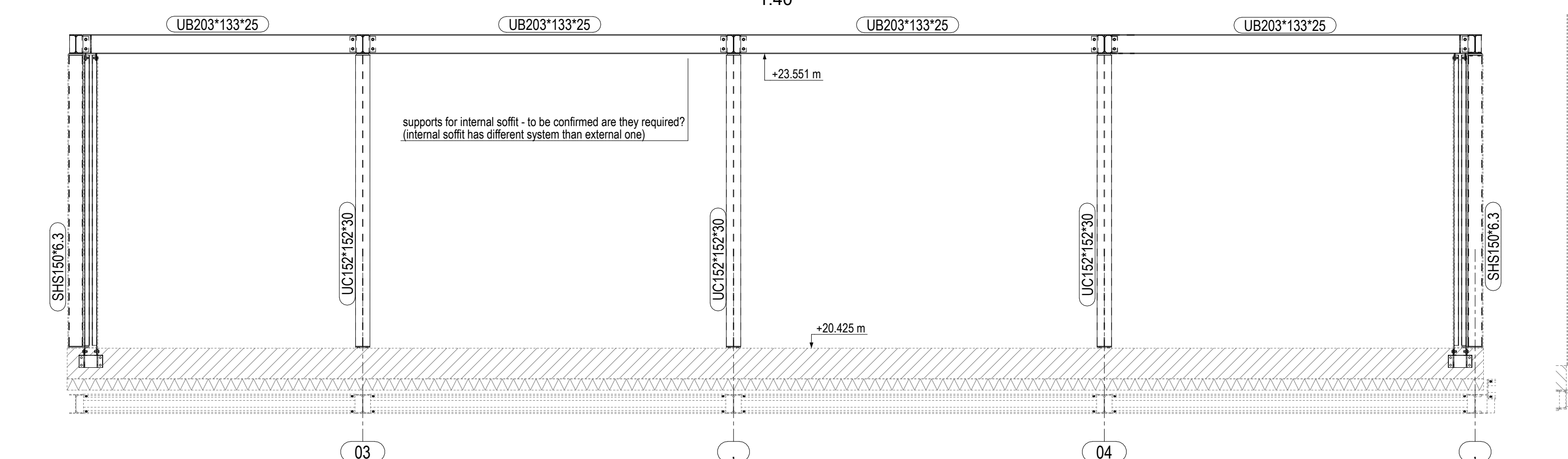


Secondary structure Plan

1:40

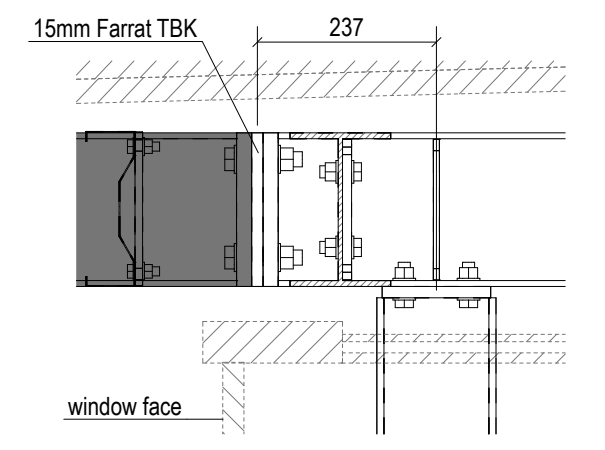


3-3
1:40



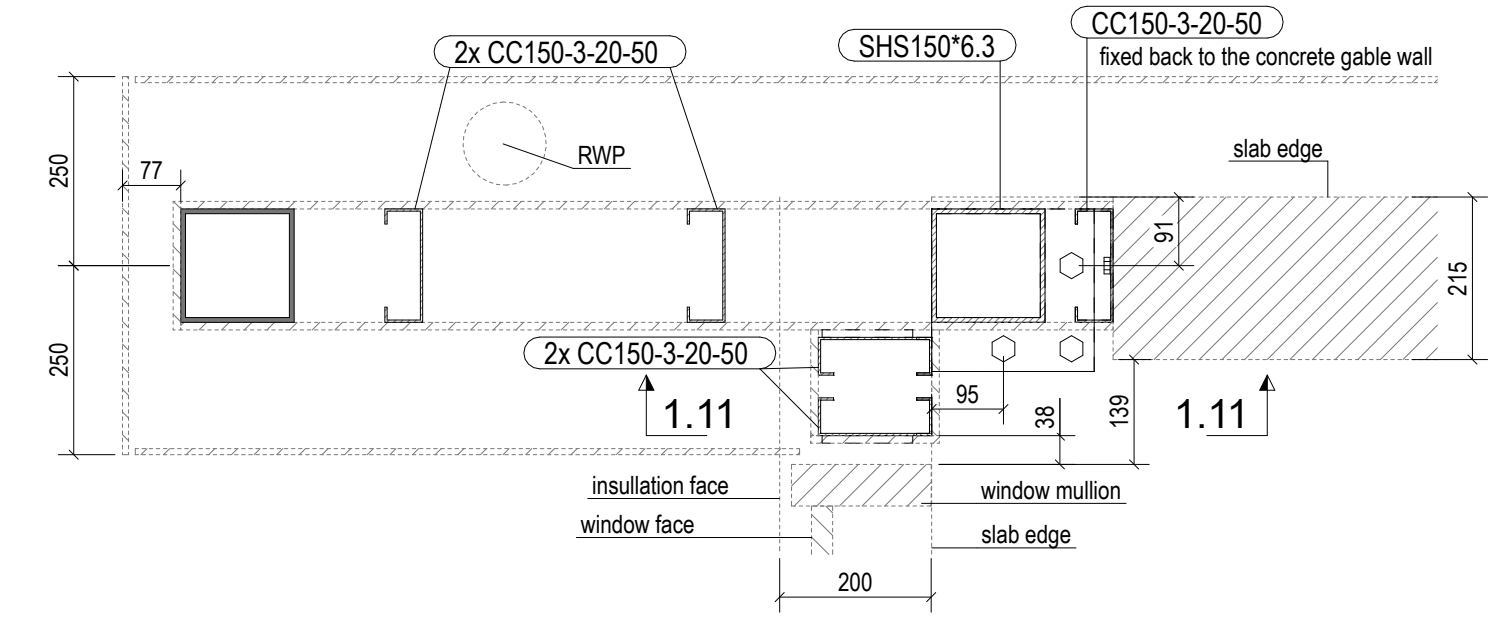
Detail B

1:10



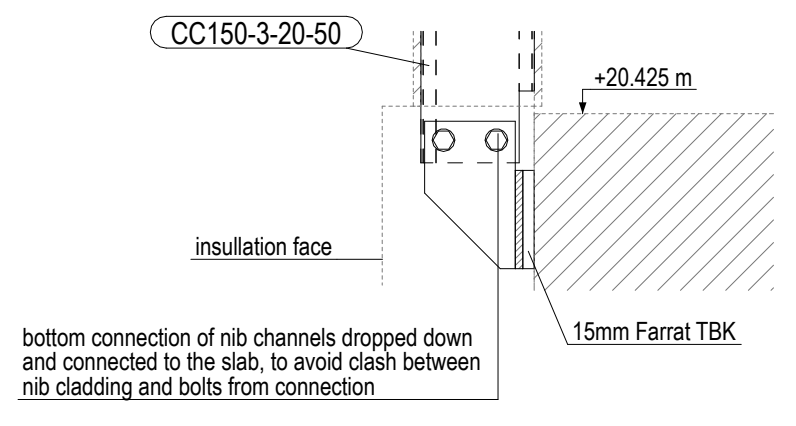
1.1 - 1.1

1:10



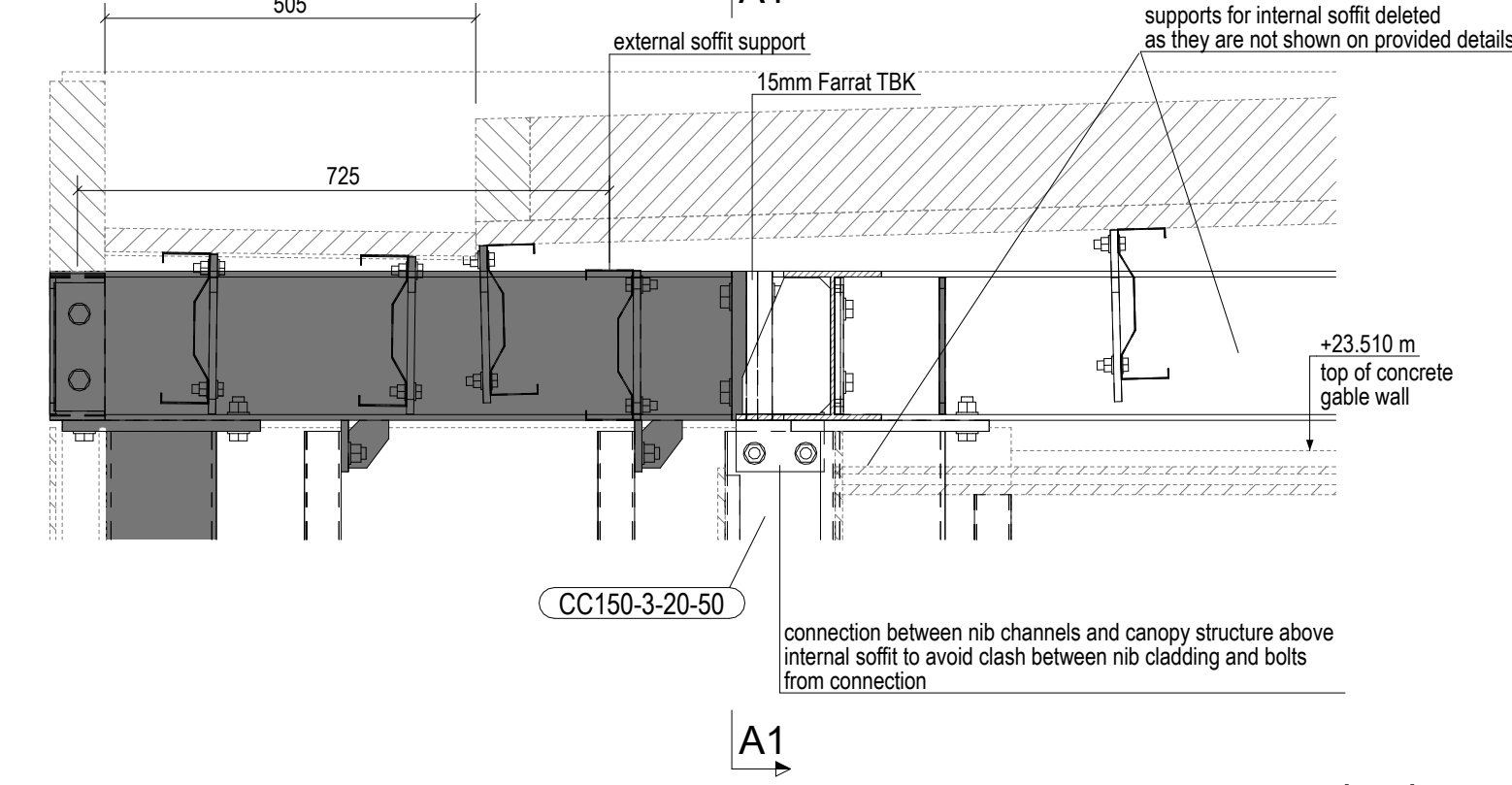
1.11 - 1.11

1:10



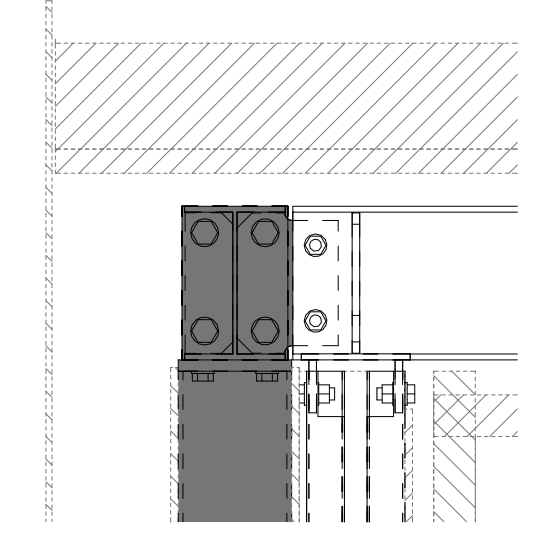
Detail A

1:10

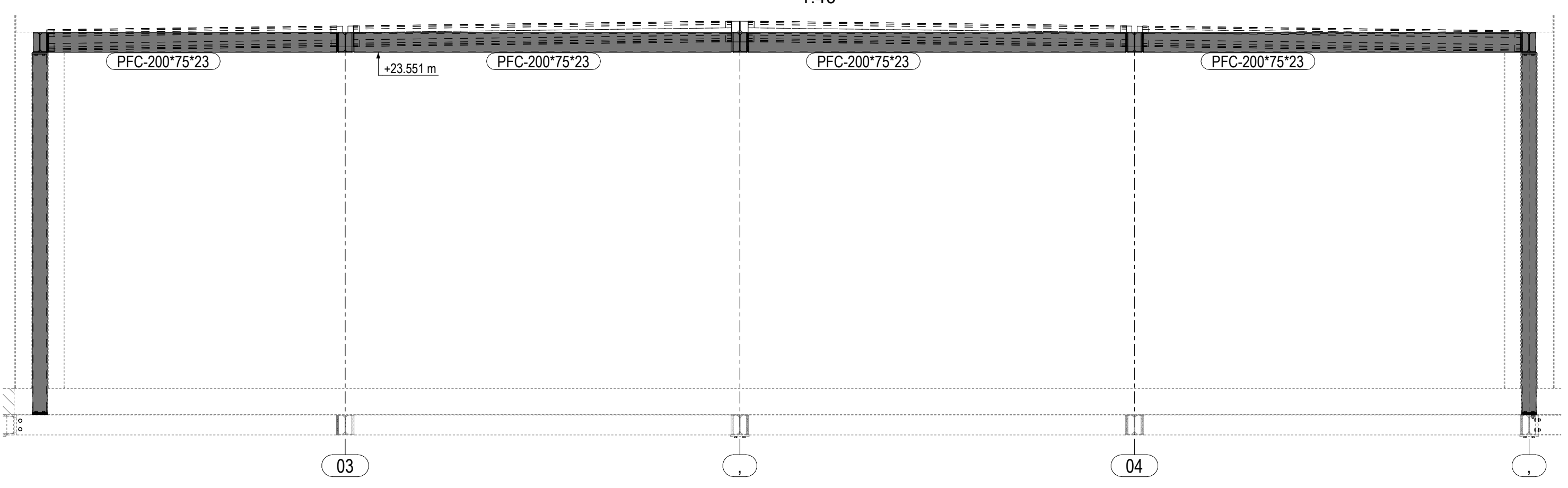


A1 - A1

1:10



4-4
1:40



- NOTES:
- Execution class EXC2 to IS EN 1090
 - CE service category SC1
 - All structural steel to be grade S355J2
 - All bolts to comply with en-iso 4017 standard (fully threaded), grade 8.8 U.N.O.
 - All bolts, screws and nuts to be sheradized in accordance with BS9421
 - External parts to be galvanised - refer to Downs Associates Structural Steel Specification - 002.05
 - Internal parts to be painted. For painting spec. refer to Downs Associates Structural Steel Specification - 002.06
 - All welds to be continuous 6mm fillet u.n.o.

GREY MEMBERS TO BE GALVANISED (EXTERNAL PARTS), ALL OTHERS PAINTED (INTERNAL PARTS)