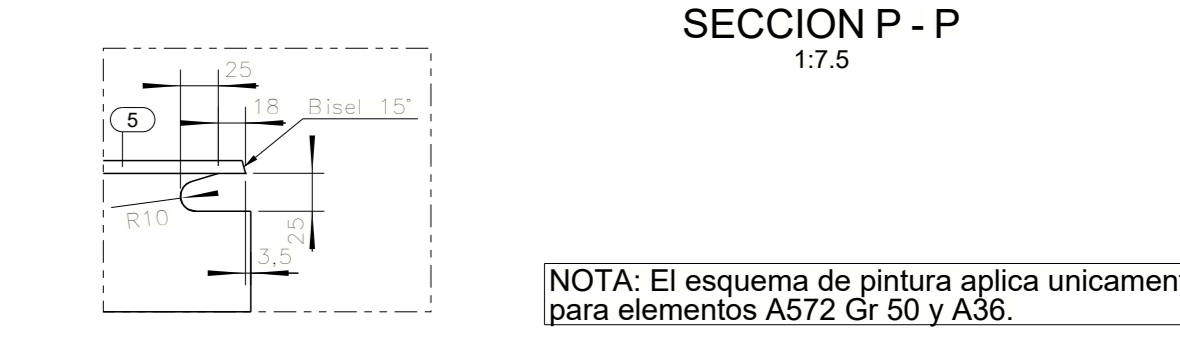
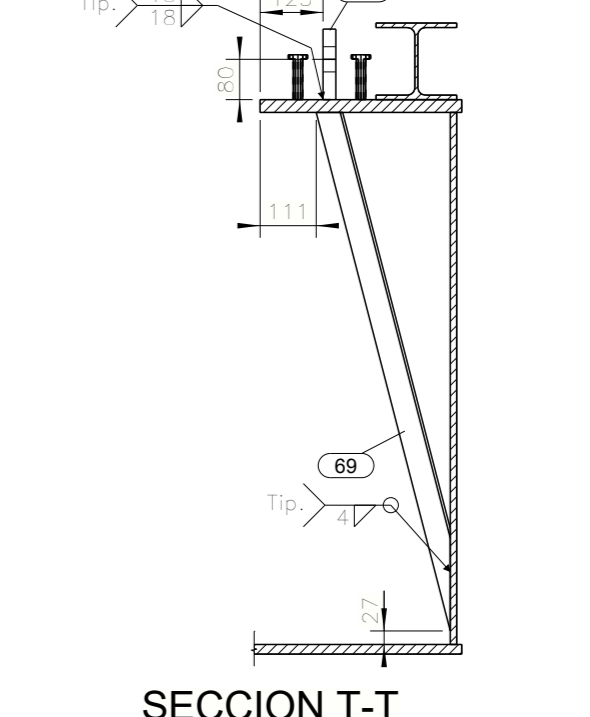
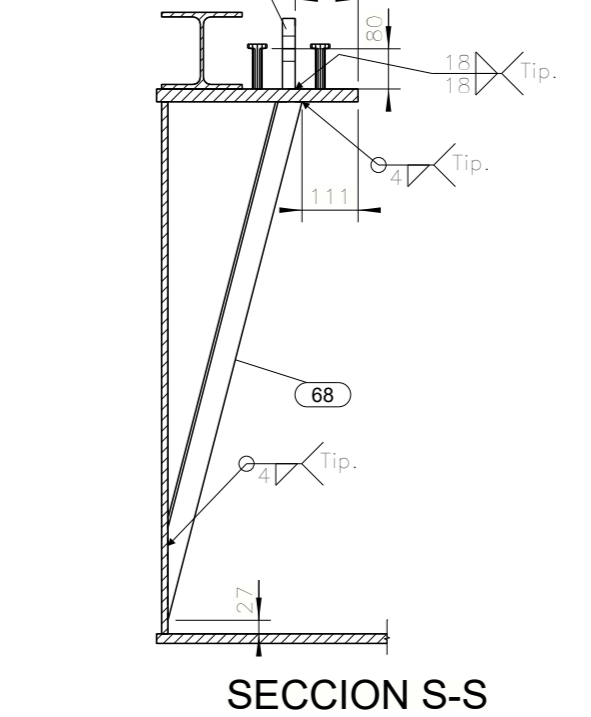
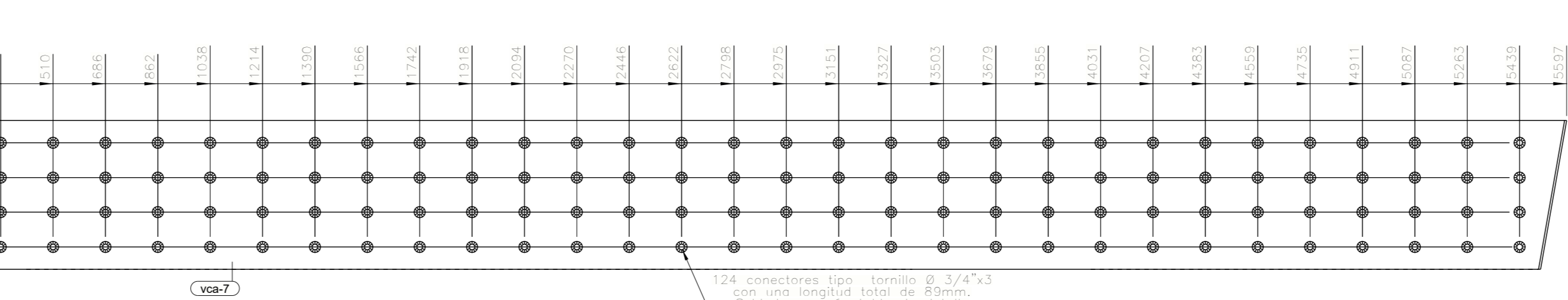
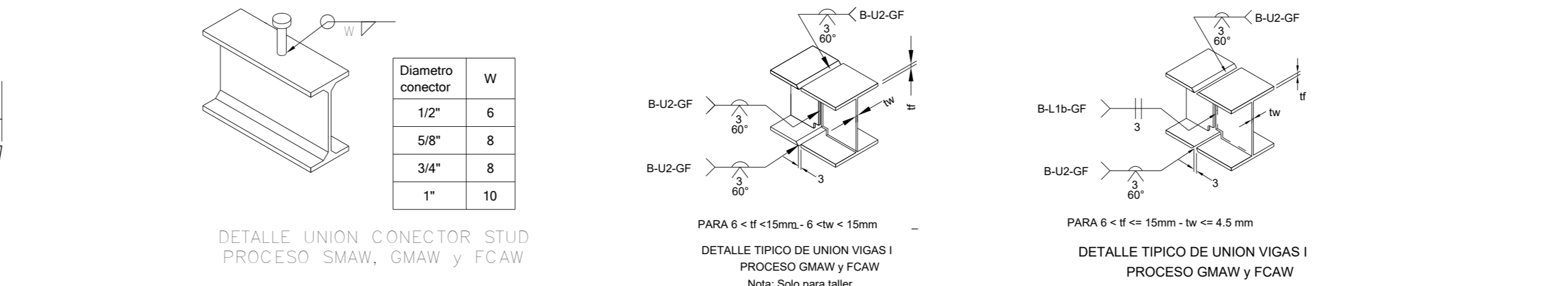
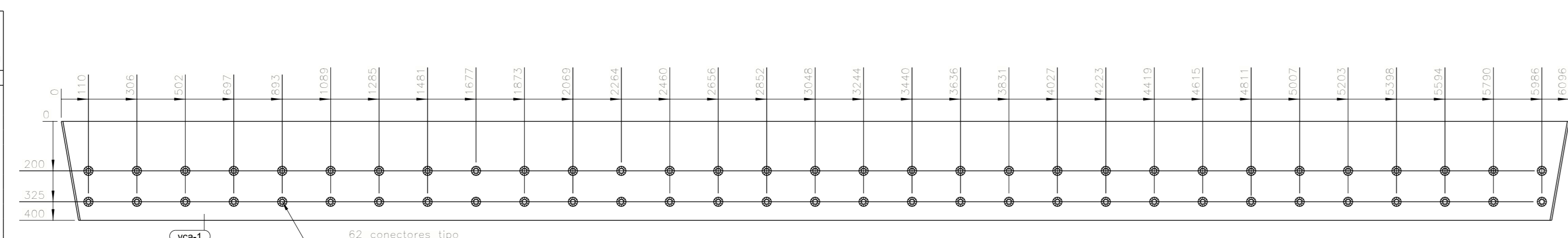


LISTA PARTES DE CONJUNTO

Conjunto: **V-8** Cantidad: **2** Long. (mm): **6126**
 Descripción: **ENSAMBLE DE VIGA** Peso. (Un): **7537.42 kg**

PARTES	CANT	DESCRIPCION	LONG	P. UNIT	P. TOTAL	A. TOTAL	MATERIAL
1	1	HEA160	4990	142.73	265.45	8.498	ASTM A572 Gr.50
2	1	PL12.7*1053	1943	172.53	600.12	14.024	ASTM A709 Gr.50W
3	1	HEA160	5800	176.50	363.01	10.509	ASTM A572 Gr.50
4	1	IPE200	4909	54.91	109.82	7.540	ASTM A572 Gr.50(B.5)
5	1	IPE200	5499	81.41	122.91	8.432	ASTM A572 Gr.50(B.5)
26	1	PL12.7*50.8	3400	17.22	34.44	0.866	ASTM A709 Gr.50W
27	2	PL12.7*50.8	406	2.06	8.23	0.211	ASTM A709 Gr.50W
28	1	PL12.7*50.8	511	2.59	5.18	0.132	ASTM A709 Gr.50W
31	1	L4X516	2225	27.07	54.15	1.789	ASTM A572 Gr.50
32	1	L4X516	2155	26.22	52.44	1.733	ASTM A572 Gr.50
33	1	PL12.7*100	300	2.99	5.98	0.136	ASTM A709 Gr.50W
34	4	PL12.7*50	300	1.50	5.98	0.147	ASTM A709 Gr.50W
42	1	L4X516	2120	25.80	51.59	1.704	ASTM A572 Gr.50
43	1	L4X516	2280	27.74	55.48	1.833	ASTM A572 Gr.50
44	1	PL12.7*100	600	5.98	11.96	0.287	ASTM A709 Gr.50W
45	1	PL12.7*50	600	2.99	5.98	0.144	ASTM A709 Gr.50W
46	1	L4X516	1871	22.77	45.54	1.504	ASTM A572 Gr.50
47	1	L4X516	2239	27.17	54.36	1.796	ASTM A572 Gr.50
57	2	PL12.7*1053	1663	174.53	698.13	14.186	ASTM A709 Gr.50W
67	4	PL25.4*120	140	3.35	26.80	0.337	ASTM A709 Gr.50W
68	2	L2X316	1063	3.85	15.38	0.846	ASTM A572 Gr.50
69	2	L2X316	1063	3.85	15.38	0.846	ASTM A572 Gr.50
2000	248	TULO CONECTOR A307 GR2 34X3	89	0.24	121.01	3.902	ASTM A307
vca-1	1	PL25.4*400	6096	486.18	972.36	10.284	ASTM A709 Gr.50W
vca-4	1	PL25.4*400	6063	493.81	807.62	8.527	ASTM A709 Gr.50W
vca-7	1	PL25.4*500	5597	557.99	1115.98	11.617	ASTM A709 Gr.50W
vca-19	1	PL12.7*1055.5	4834	519.18	1038.36	21.094	ASTM A709 Gr.50W
vca-20	1	PL12.7*1055.5	5514	580.29	1160.59	23.576	ASTM A709 Gr.50W
vca-21	1	PL12.7*1055.5	6096	641.40	1282.81	26.057	ASTM A709 Gr.50W
vca-37	1	PL19.1*2441.5	6096	2225.65	4451.29	55.933	ASTM A709 Gr.50W
vca-38	1	PL19.1*2441.5	6296	239.32	1415.64	16.707	ASTM A709 Gr.50W

PESO TOTAL DEL PLANO = 15074.85 kg - 3 % DE SOLDADURAS = 15527.09 kg AREA TOTAL DEL PLANO = 257.18 m²



Acabado / Pintura / Ensayo (SRS)

Anticorrosivo / Espezor: Primer Epoxifosfato de zinc Gris RAL 7035 P179 / J1
 Barrera / Espezor: Primer Epoxifosfato de zinc Gris RAL 7035 P179 / J1
 Ensamble / Espezor: Por definir / J1
 Tratamiento Superficial: SSPC-SP10 sand blasting grado comercial
 Preferencia al Sistema de Resistencia Química (SRS)

INHIERRO

OBRA 23054D
 Puente Peatonal Parques del Rio Caldas
 CONTIENE : ENSAMBLE DE VIGA

Calculado: Carlos Alberto Vasquez FECHA: 09.11.2023
 DISEÑADO: Inbiero S.A.S MEDIDAS EN: mm
 VERIFICADO: Sandra M. Cardenas ESCALA: INDICADAS
 DIBUJADO: Hernan Ortiz REVISOR: REVISOR

PLANO N°: **23054DF4** **V-8**