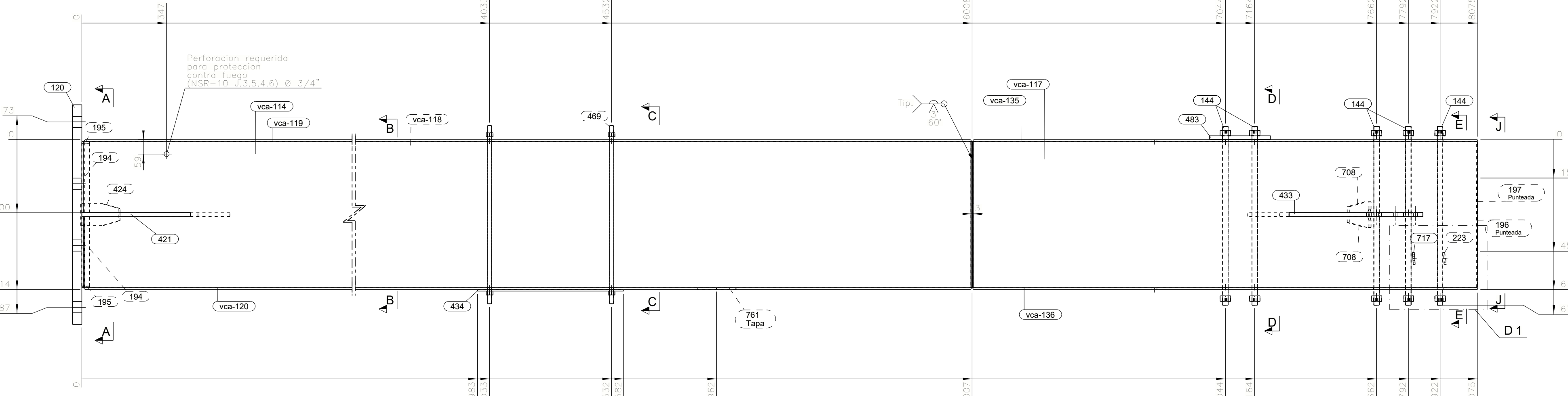
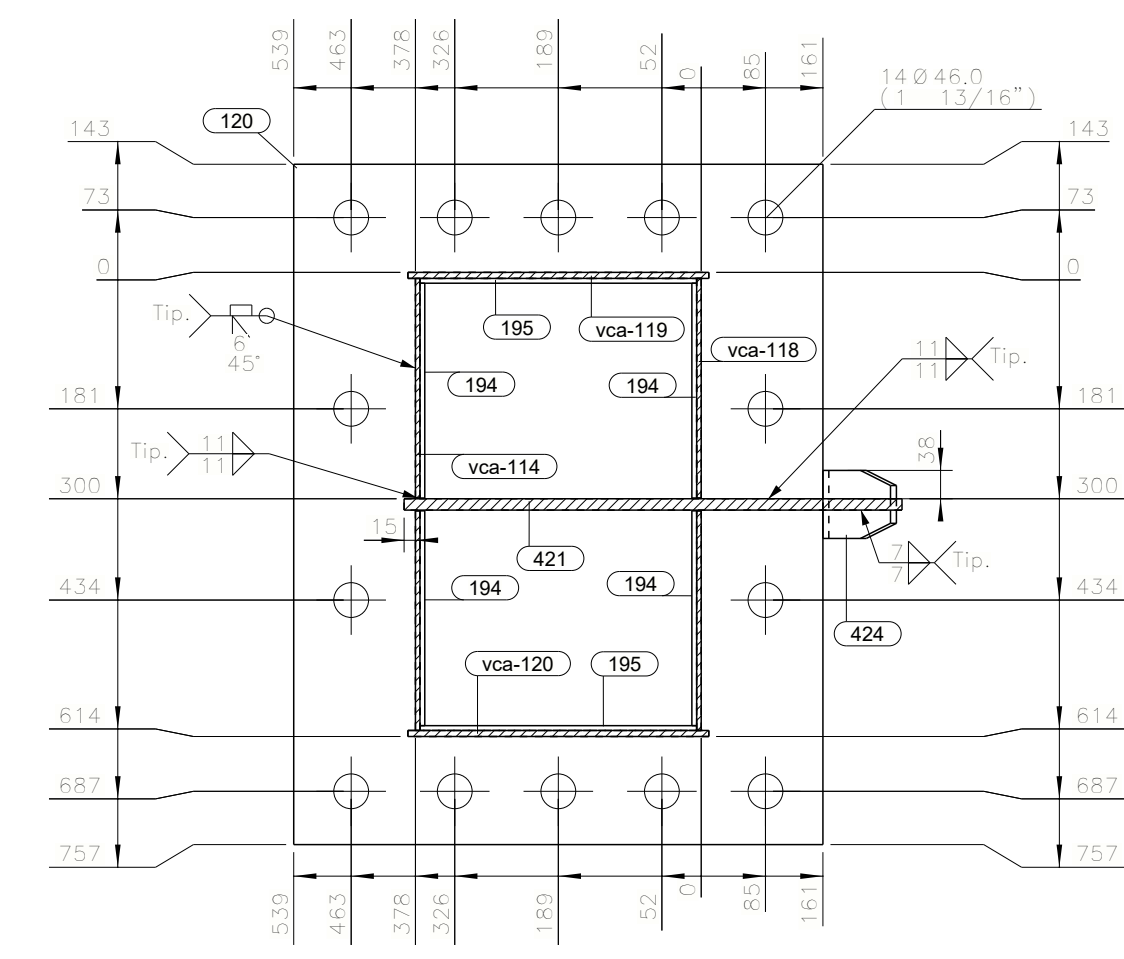


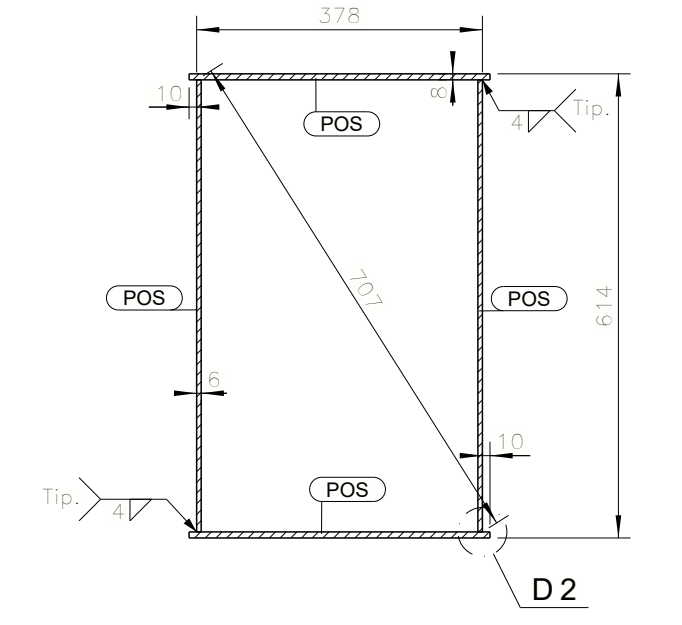
V.SUPERIOR
1:12.5



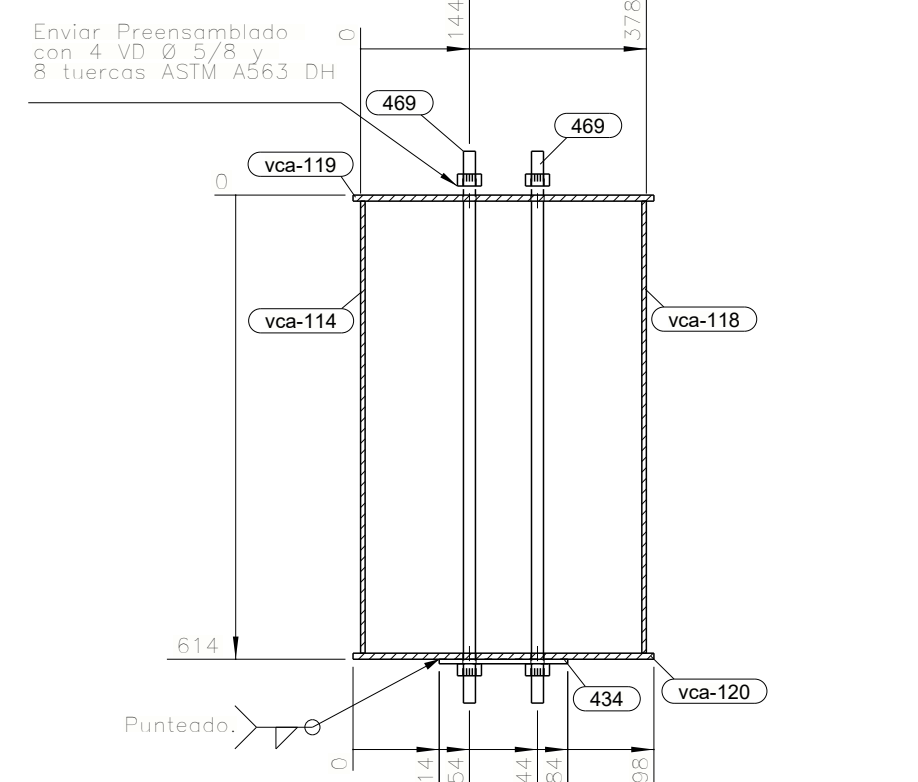
V.FRONTAL
1:12.5



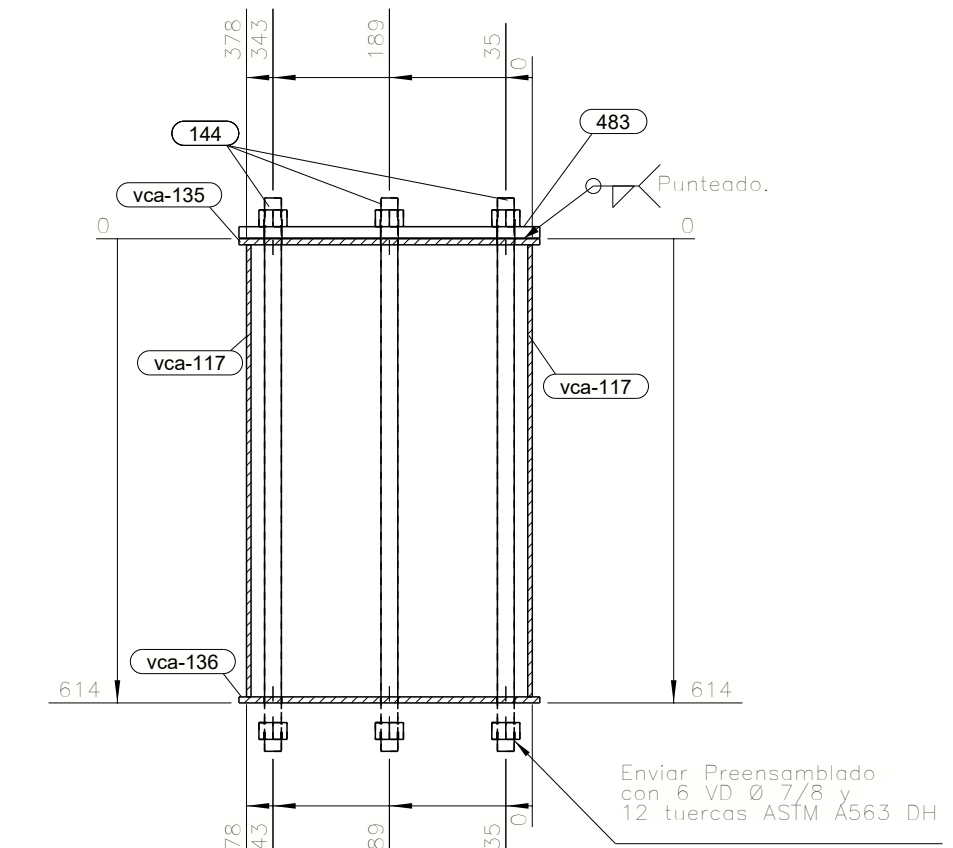
SECCION A - A
1:10



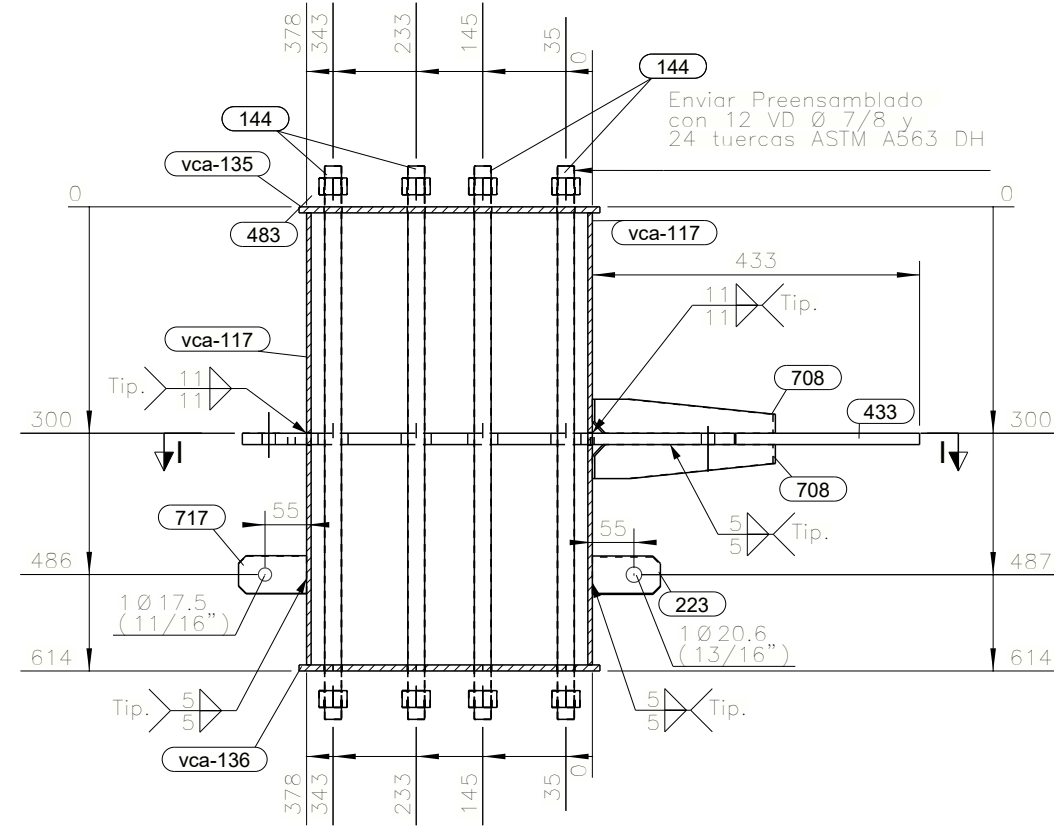
SECCION B - B
1:10



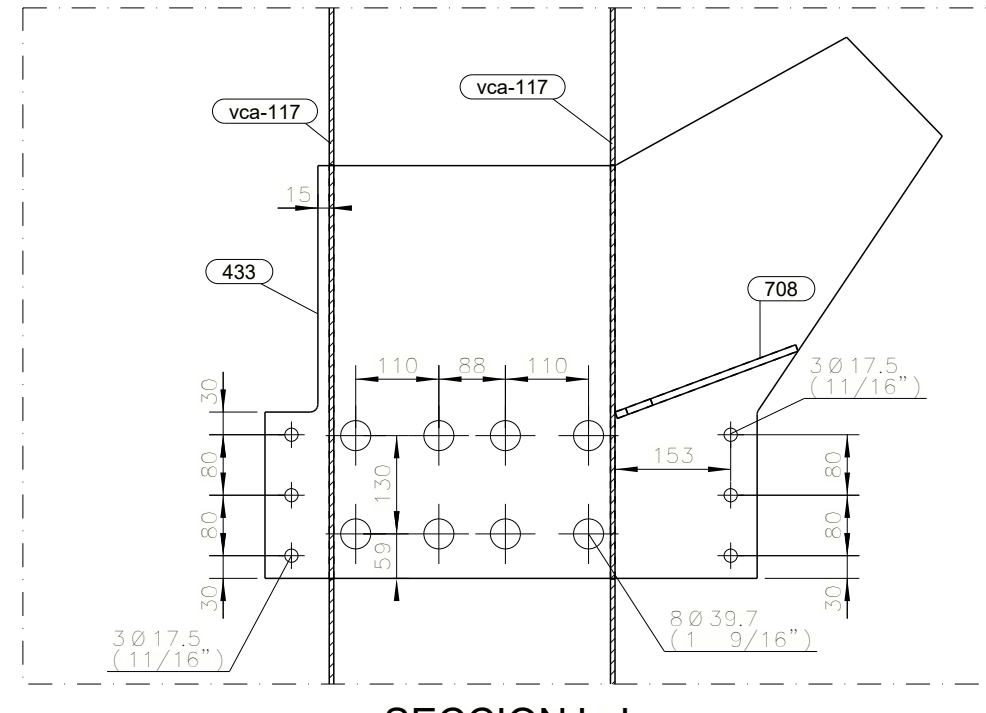
SECCION C - C
1:10



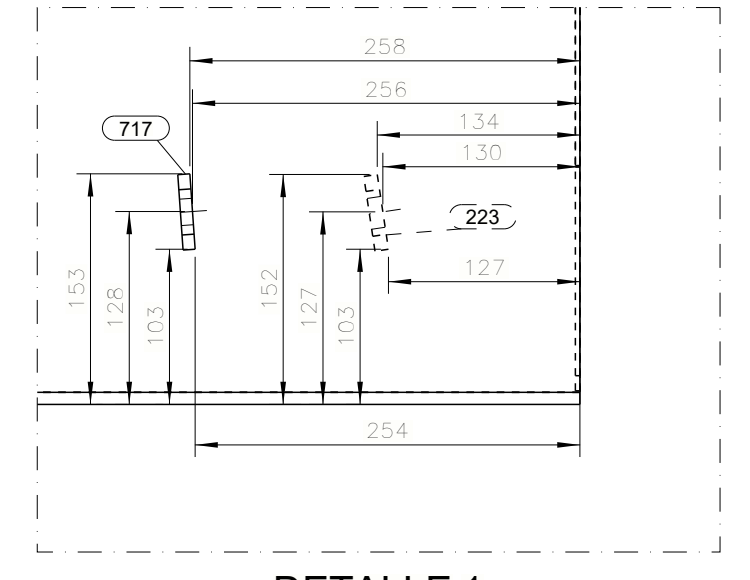
SECCION D - D
1:10



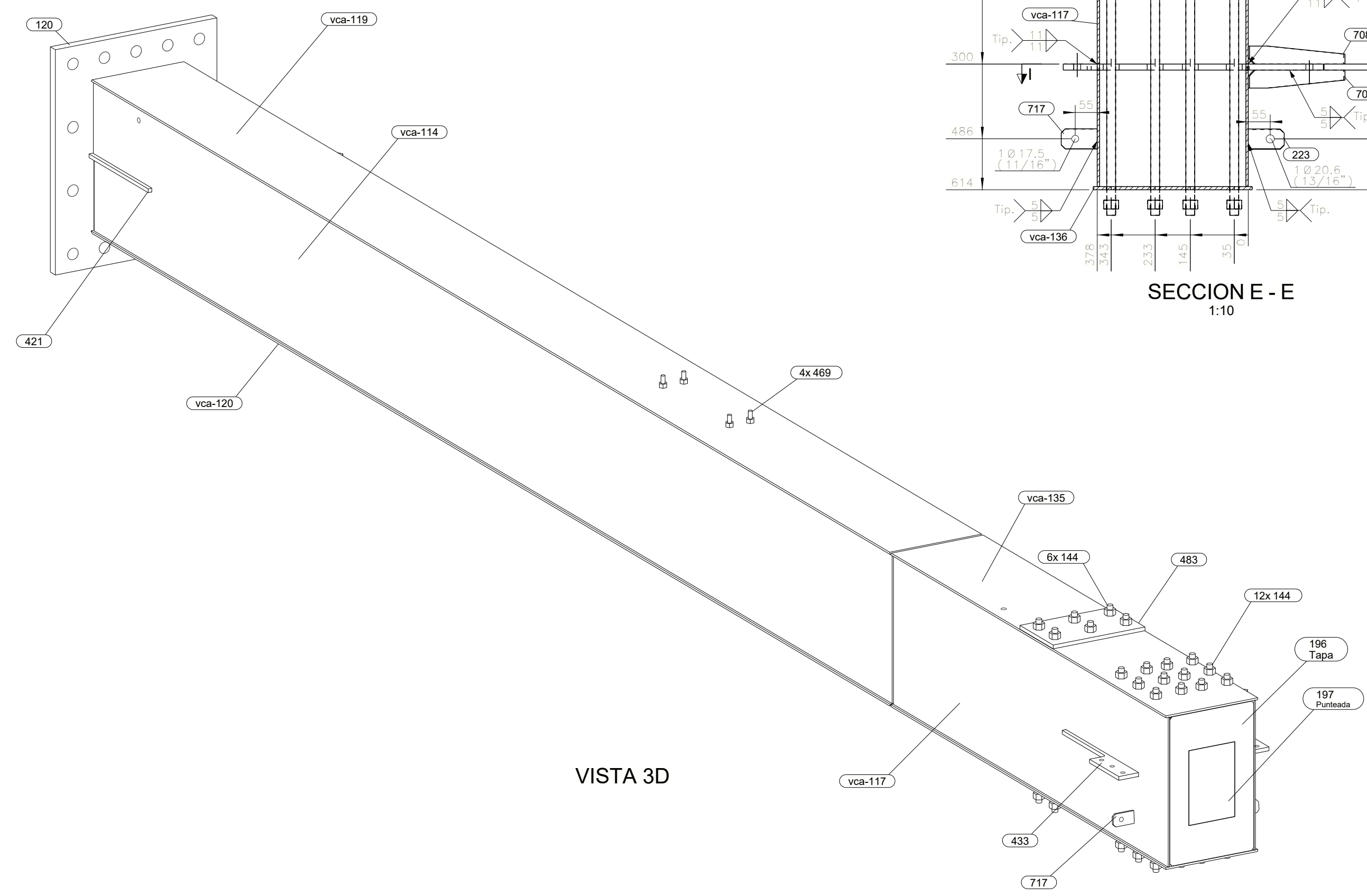
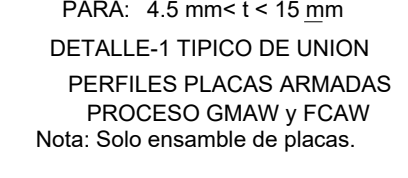
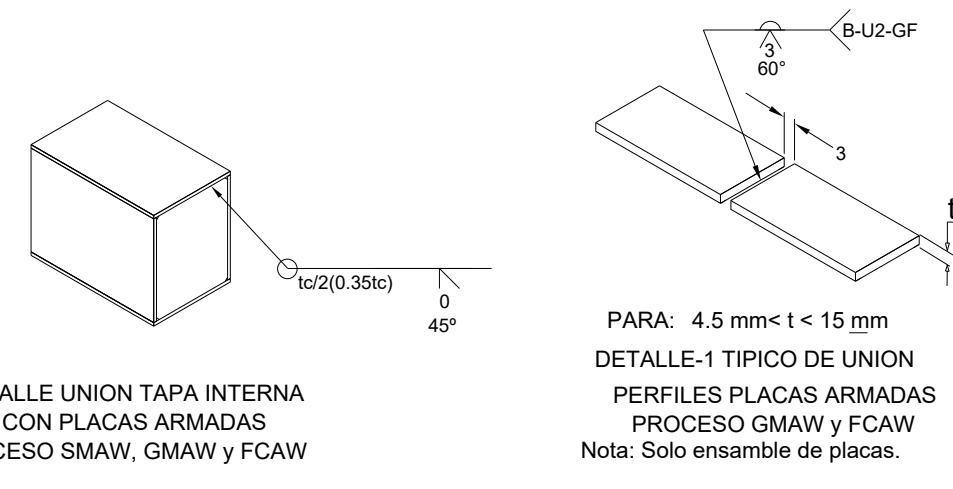
SECCION E - E
1:10



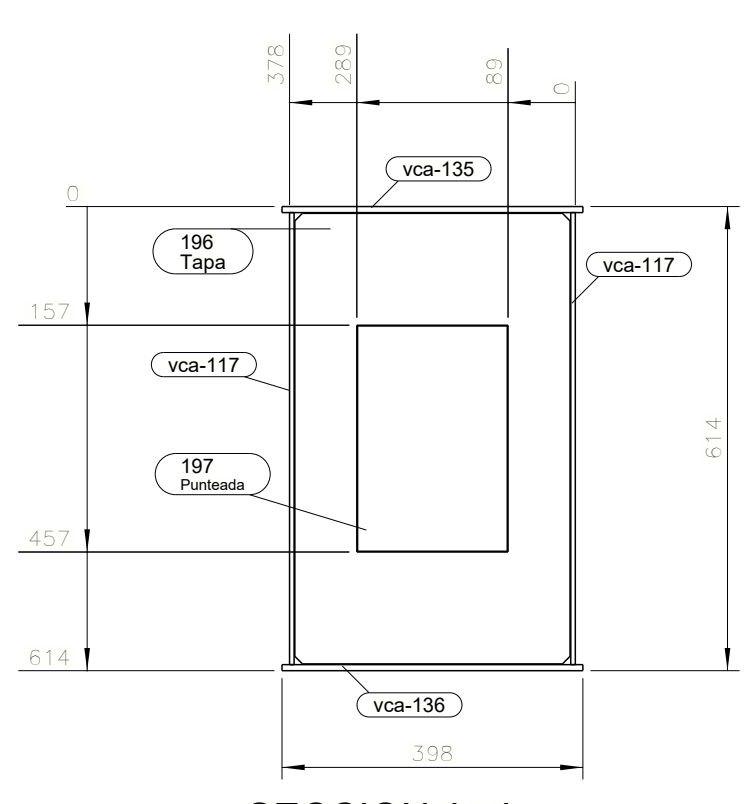
SECCION I - I
1:10



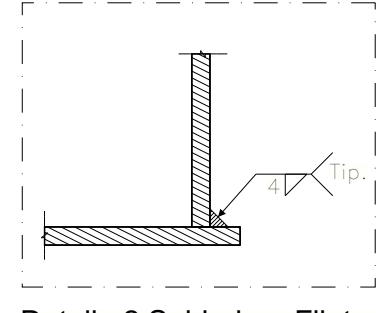
DETALLE 1
1:5



VISTA 3D



SECCION J - J
1:10



Detalle 2 Soldadura Filete.
1:1

LISTA PARTES DE CONJUNTO

Conjunto: **K-20** Cantidad: **1** Long. (mm): **8113**
 Descripción: **ENSAMBLE DE COLUMNA** Peso. (Un): **1257.65 kg**

PARTE	C/UNIT	CANT	DESCRIPCION	LONG	P. UNIT	P. TOTAL	A. TOTAL	MATERIAL
120	1	1	PL38*700	900	187.93	187.93	1.382	ASTM A572 Gr.50
144	18	18	VD 7/8	732	2.22	40.03	0.908	ASTM F1554 Gr.105
194	4	4	PL 1/4X1-1/4	284	0.45	1.79	0.086	ASTM A36 Gr.36
196	2	2	PL 1/4X1-1/4	366	0.58	1.15	0.056	ASTM A36 Gr.36
199	1	1	PL3*364	596	5.11	5.11	0.322	ASTM A36 Gr.36
197	1	1	PL3*368	298	0.00	0.00	0.121	Densidad Nula
223	1	1	PL9*50	90	0.32	0.32	0.011	ASTM A572 Gr.50
421	1	1	PL15*606	826	58.92	58.92	0.715	ASTM A572 Gr.50
424	1	1	PL9*90	180	1.14	1.14	0.034	ASTM A572 Gr.50
433	1	1	PL15*716	866	75.51	75.51	0.857	ASTM A572 Gr.50
434	1	1	PL6*170	599	4.79	4.79	0.213	ASTM A36 Gr.36
469	4	4	VD 5/8	730	1.13	4.54	0.146	ASTM F1554 Gr.105
483	1	1	PL15*250	398	11.72	11.72	0.218	ASTM A572 Gr.50
708	2	2	PL9*45	255	0.81	1.62	0.048	ASTM A572 Gr.50
717	1	1	PL8*50	90	0.28	0.28	0.011	ASTM A36 Gr.36
761	1	1	PL8*158	158	0.00	0.00	0.043	Densidad Nula
2001	8	8	TUERCA 2H (5/8)	16	0.05	0.42	0.026	ASTM A563 DH
2004	36	36	TUERCA 2H (7/8)	22	0.13	4.79	0.217	ASTM A563 DH
vca-114	1	1	PL8*398	6000	168.99	168.99	7.243	ASTM A36 Gr.36
vca-117	2	2	PL8*598	2066	58.19	116.38	4.979	ASTM A36 Gr.36
vca-118	1	1	PL8*598	6000	168.99	168.99	7.242	ASTM A36 Gr.36
vca-119	1	1	PL8*398	6000	149.97	149.97	4.875	ASTM A36 Gr.36
vca-120	1	1	PL8*398	6000	149.97	149.97	4.840	ASTM A36 Gr.36
vca-135	1	1	PL8*398	2066	51.64	51.64	1.683	ASTM A36 Gr.36
vca-136	1	1	PL8*398	2066	51.64	51.64	1.683	ASTM A36 Gr.36

PESO TOTAL DEL PLANO = **1257.65 kg** + **3** % DE SOLDADURAS = **1295.36 kg** AREA TOTAL DEL PLANO = **37.96 m2**

Acabado / Pintura / Ensayo (SRS)

Anticorrosivo / Espesor: Primer Epoxico Gris claro P/75 // NO APLICA //

Barrera / Espesor: // // POR DEFINIR //

Esmalte / Espesor: // // POR DEFINIR //

Tratamiento Superficial: SSPC-SP10 sand blasting grado comercial

Pertenece al Sistema de Resistencia Sismica (SRS): SI

NOTA: Acabado por definir

TAMANOS DE FILETE	Nº rev.	Descripción de Revisión	Tipo	Fecha	Revisó
(t)					
3 (1/8")	2				
4.5 (3/16")	3				
6 (1/4")	4				
8 (5/16")	4				
9 (3/8")	5				
12 (1/2")	7				
15 (5/8")	8				
19 (3/4")	10				
25 (1")	13				
32 (1-1/4")	16				
38 (1-1/2")	19				
50 (2")	25				

OBRA :22055H
 CASA BRITANICA RIONEGRO
 CONTENIENE : ENSAMBLE DE COLUMNA
 Bodega

CALCULO: Emmanuel R.-Mariana P.-Carlos D. FECHA: 02.09.2022
 DETALLADO: Emmanuel R.-Mariana P.-Carl... MEDIDAS EN: mm
 MODELO: Sandra Cardenas-Darwin Herrera ESCALA: INDICADAS
 DIBUJO: Daniel Henao REVISO: REV. NUM.

PLANO Nº: **22055HF8** K-20