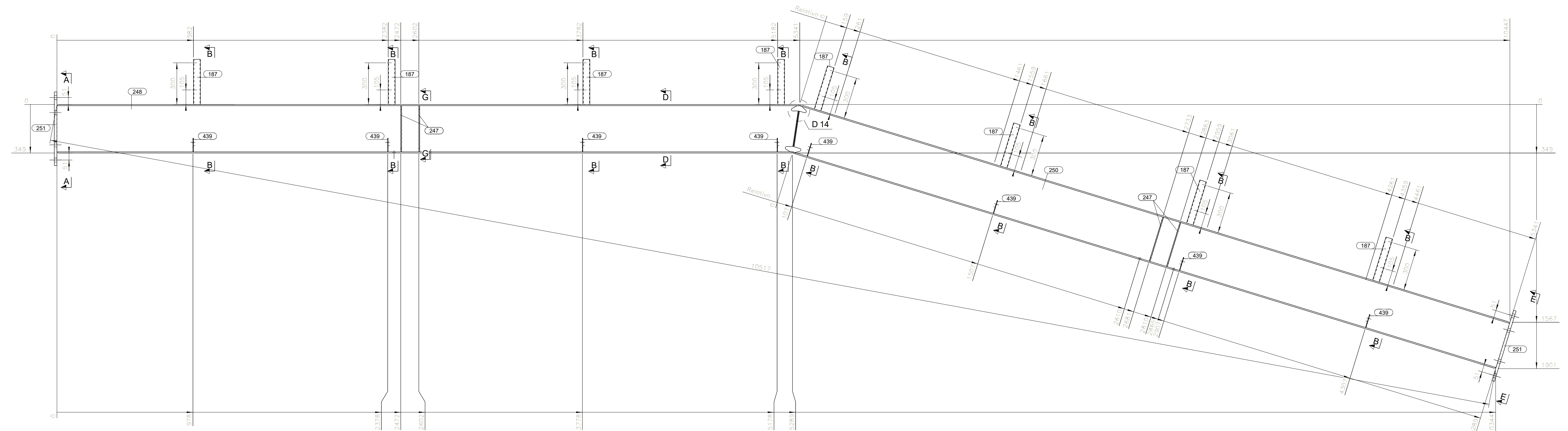
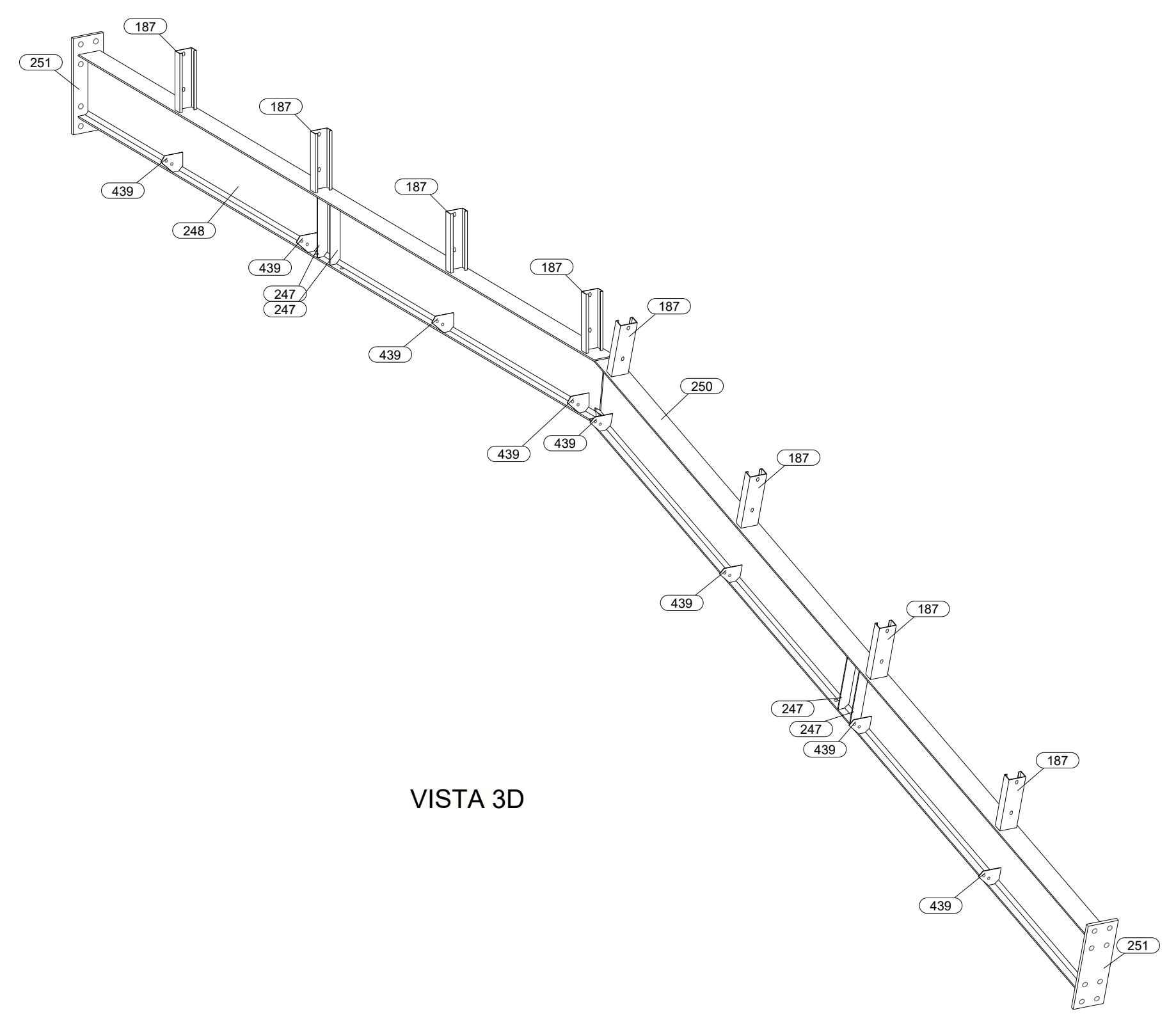


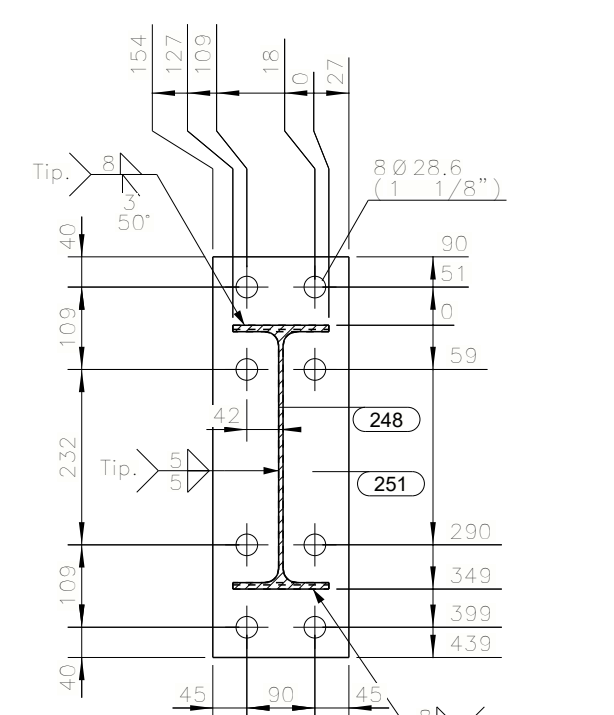
V.SUPERIOR  
1:15



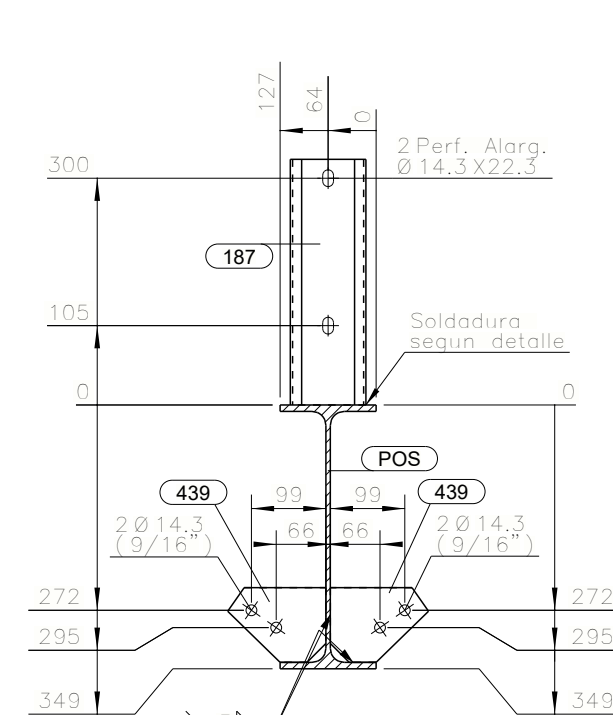
V.FRONTAL  
1:15



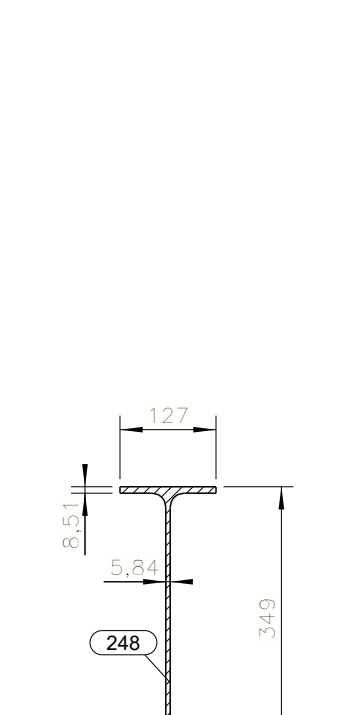
VISTA 3D



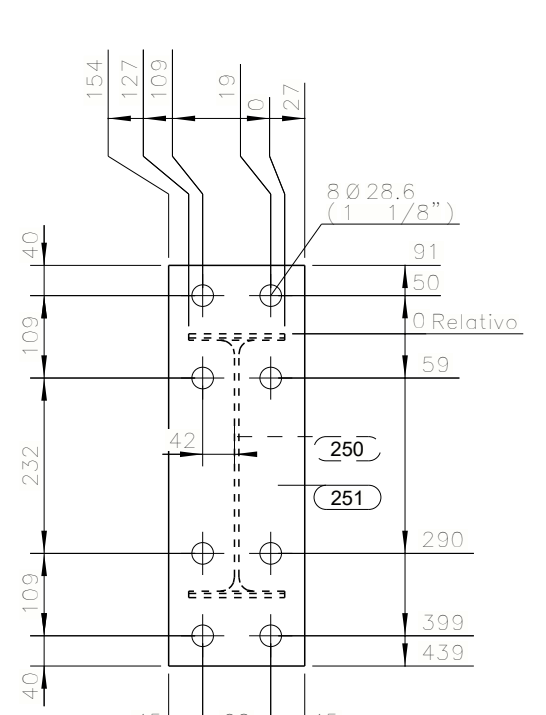
SECCION A - A  
1:10



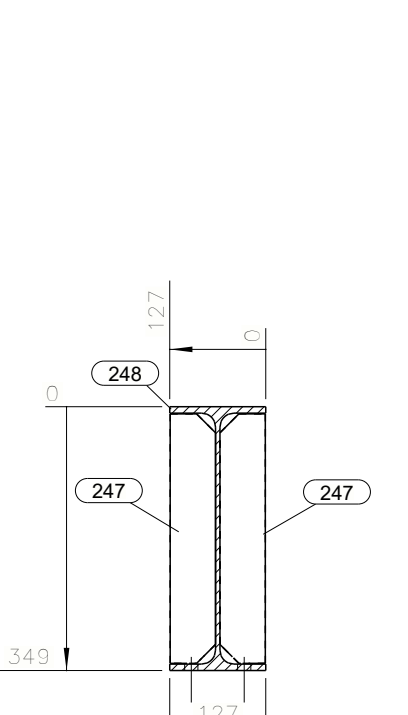
SECCION B - B  
1:10



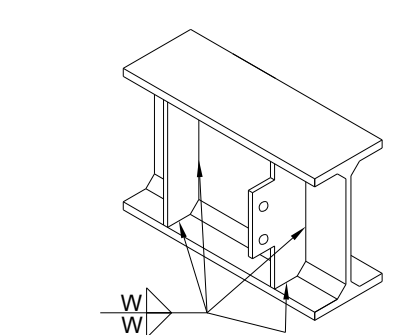
SECCION D - D  
1:10



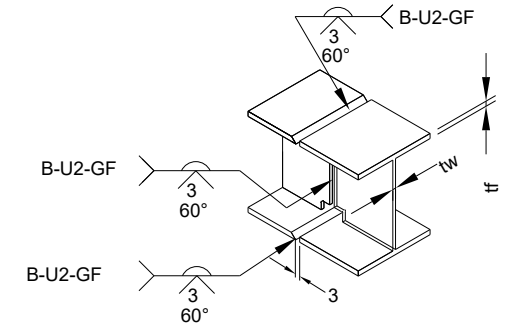
SECCION E - E  
1:10



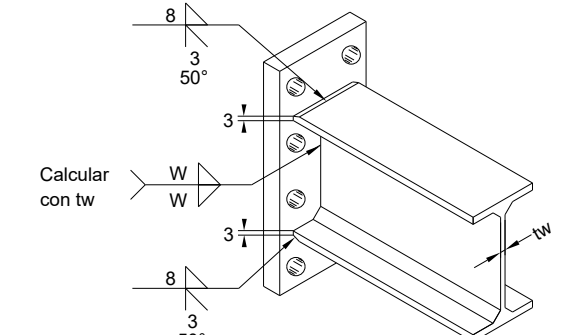
SECCION G - G  
1:10



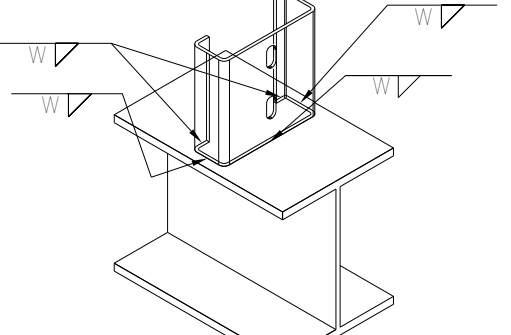
DETALLE UNION PLATINA CORTANTE y/o ATIESADOR  
PROCESO SMAW, GMAW y FCAW  
Nota: W=Ver tabla anexa



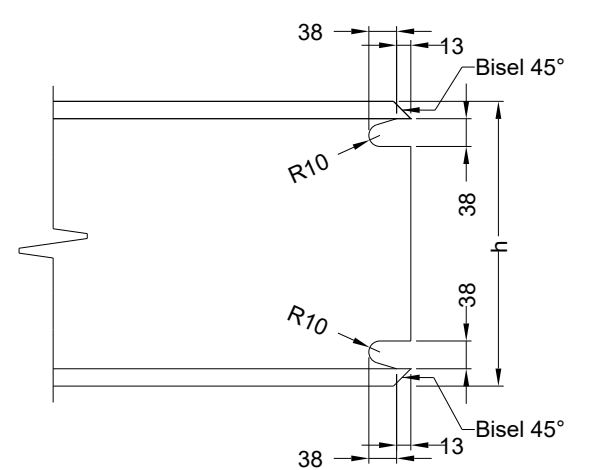
DETALLE TIPICO DE UNION VIGAS I  
PROCESO SMAW, GMAW y FCAW  
Nota: Solo para taller.



DETALLE UNION ENDPLATE VIGA I  
PROCESO SMAW, GMAW y FCAW  
Nota: W=Ver tabla anexa



DETALLE UNION VIGA LAMINADA, CON PORTAPERLIN EN PERFIL TIPO PHR  
PROCESO SMAW, GMAW y FCAW  
Nota: W=Ver tabla anexa



DETALLE 14 OJO DE RATON  
Perfiles laminados Wxx, HExx, IPxx, con altura h > 10" (250mm aprox.).

NOTA: ACABADO PENDIENTE POR DEFINIR

Acabado / Pintura / Ensayo (SRS)				
Anticorrosivo / Espesor:	Primer Epoxico Gris claro P75 //			
Barrera / Espesor:	NO APLICA //			
Esmalte / Espesor:	POR DEFINIR //			
Tratamiento Superficial:	SSPC-SP10 sand blasting grado comercial			
Pertenece al Sistema de Resistencia Sismica (SRS):	SI			



OBRA :22055H				
CASA BRITANICA RIONEGRO				
CONTIENE : ENSAMBLE VIGA DE CUBIERTA				
Bodega				
CALCULO:	Emmanuel R.-Mariana P.-Carlos D.	FECHA:	02.09.2022	
DETALLADO:	Emmanuel R.-Mariana P.-Car***	MEDIDAS EN:	mm	
MODELO:	Sandra Cardenas-Darwin Herrera	ESCALA:	INDICADAS	
DIBUJO:	Daniel Henao	REVISO:	REV. NUM.	
PLANO N°:	22055HF58			
	VC-14			

LISTA PARTES DE CONJUNTO										
PARTE	CUNIT	CANT	DESCRIPCION	LONG.	P. UNIT	P. TOTAL	A. TOTAL	MATERIAL	Long. (mm)	Peso. (Un):
187	0	32	PHR-C 100X50X3	325	1.58	50.61	4.409	ASTM A1011 Gr.50	10510	404.31 kg
247	8	32	PL6"60	330	0.93	29.84	1.371	ASTM A36 Gr.36		
248	1	4	W14X22	5338	175.45	701.81	25.196	ASTM A572 Gr.50		
251	1	4	W14X22	5338	175.45	701.81	25.196	ASTM A572 Gr.50		
251	2	8	PL19"180	530	14.23	113.83	1.742	ASTM A572 Gr.50		
439	16	64	PL3"99	130	0.30	19.35	1.334	ASTM A36 Gr.36		
PESO TOTAL DEL PLANO =				1617.26 kg + 3 % DE SOLDADURAS =	1665.78 kg	AREA TOTAL DEL PLANO =	59.25 m2			