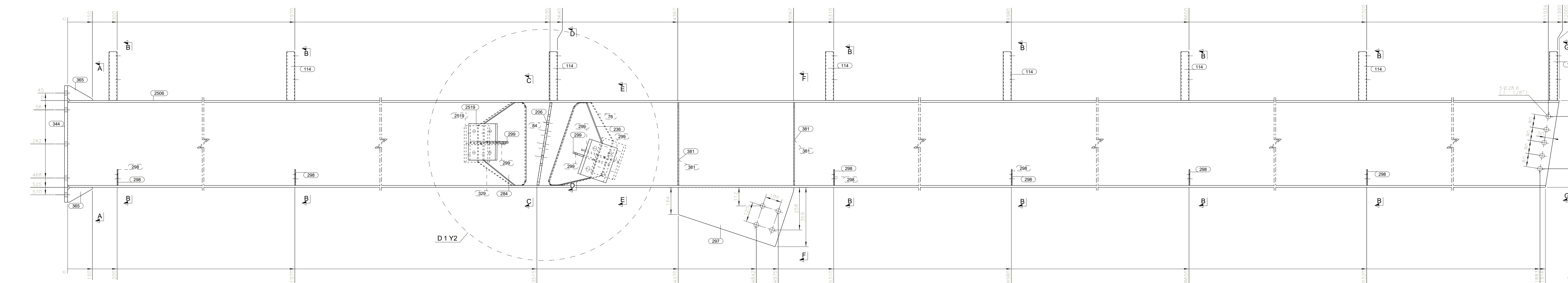
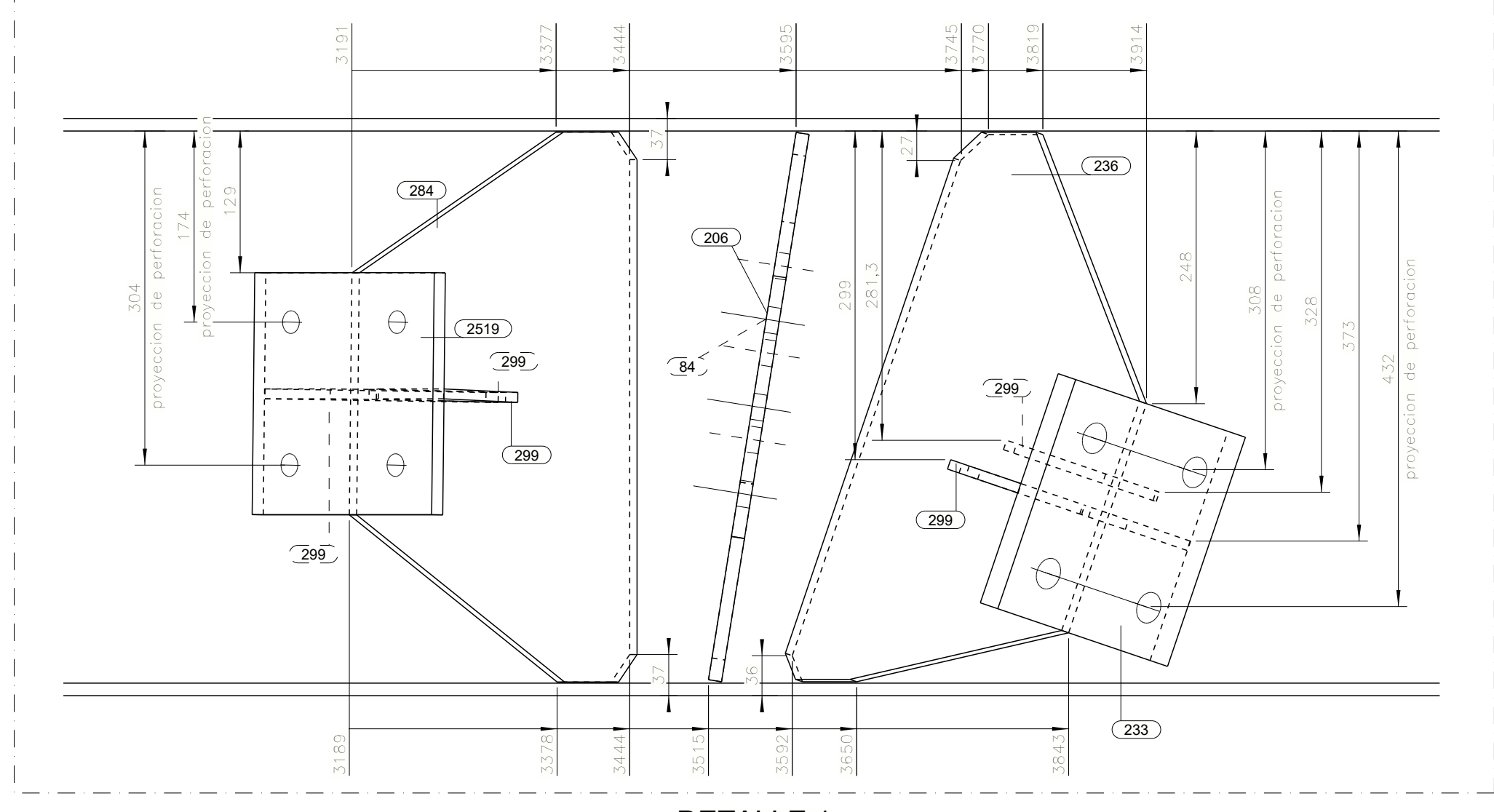
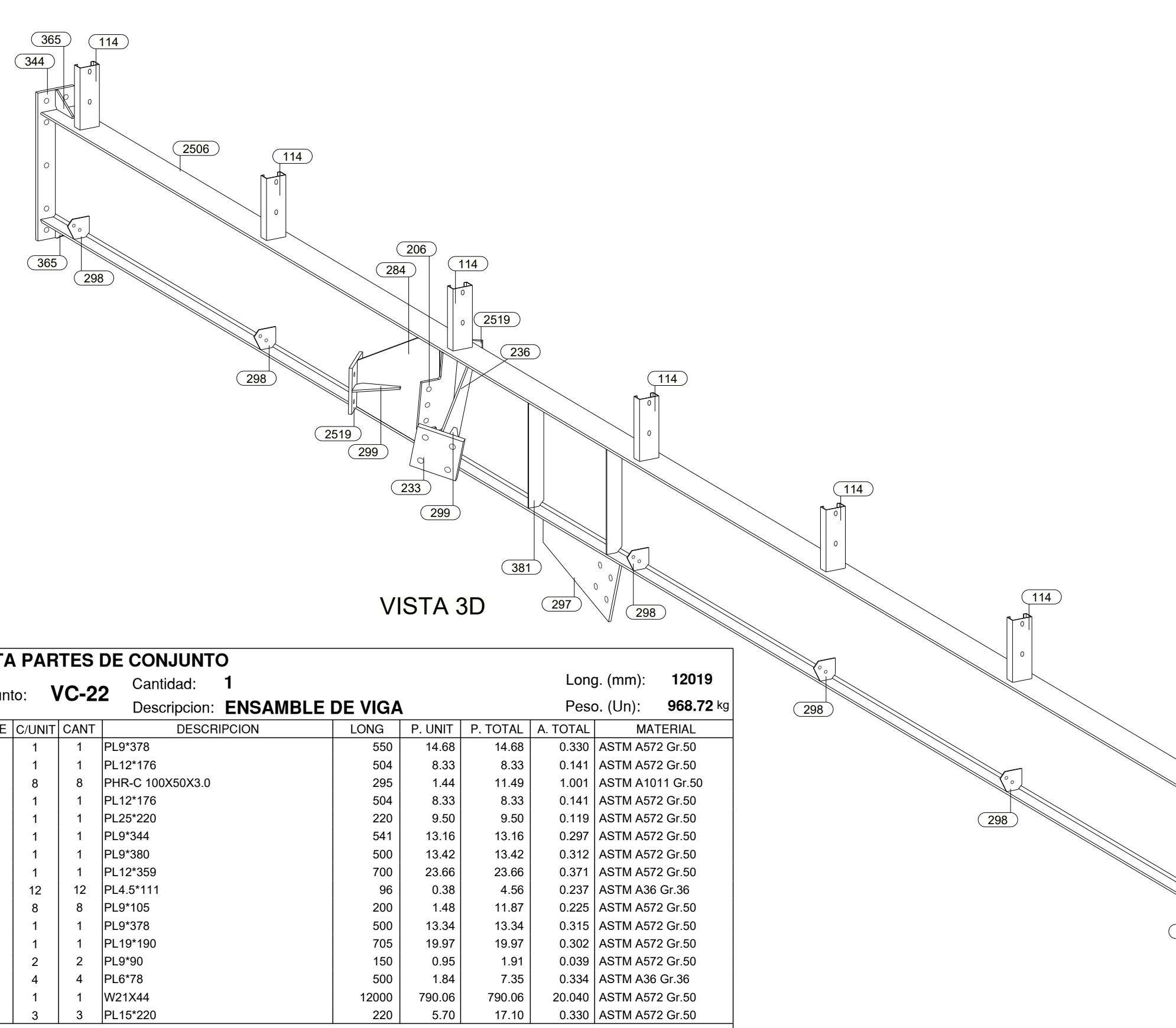


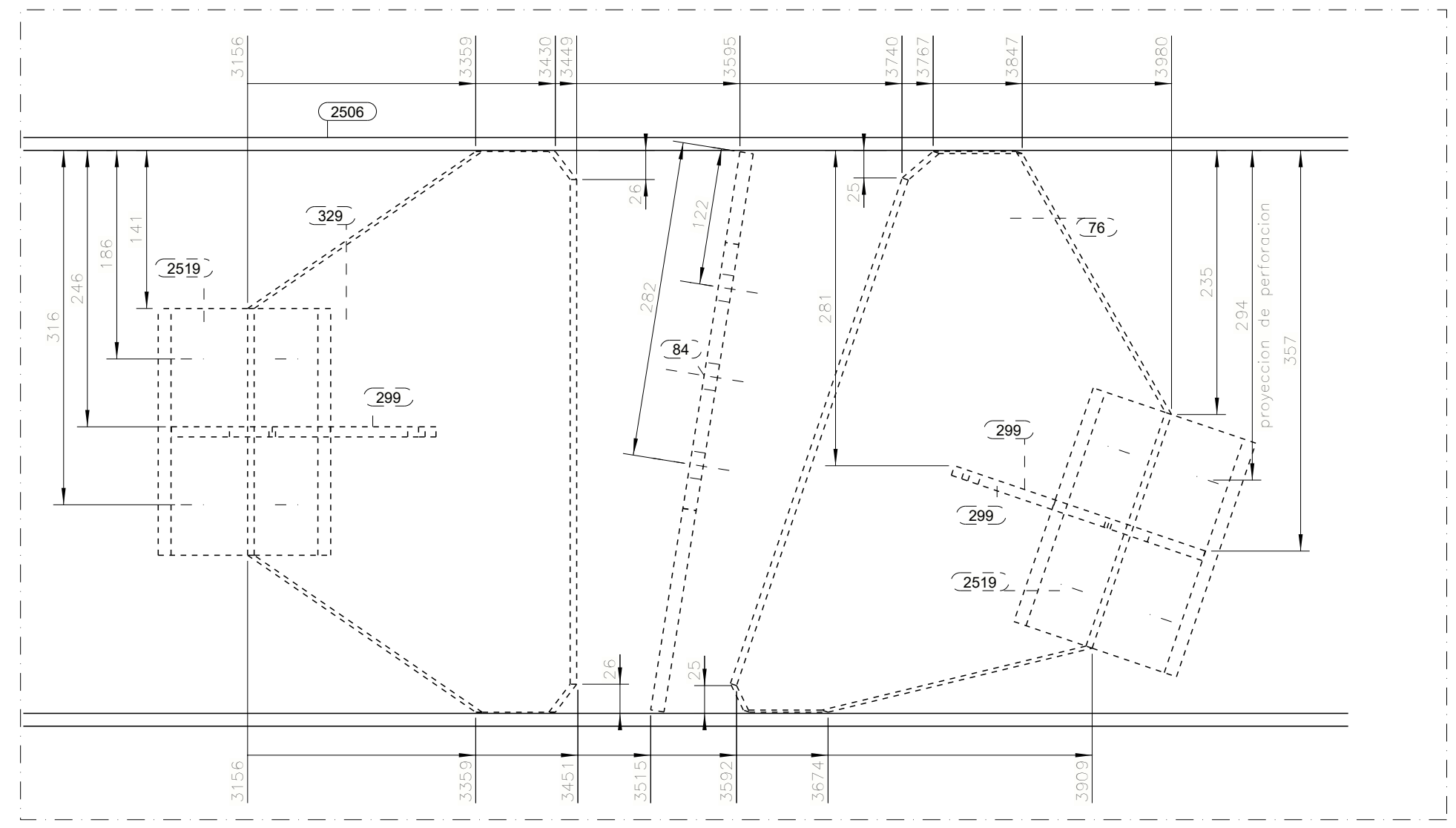
V. SUPERIOR
1:10



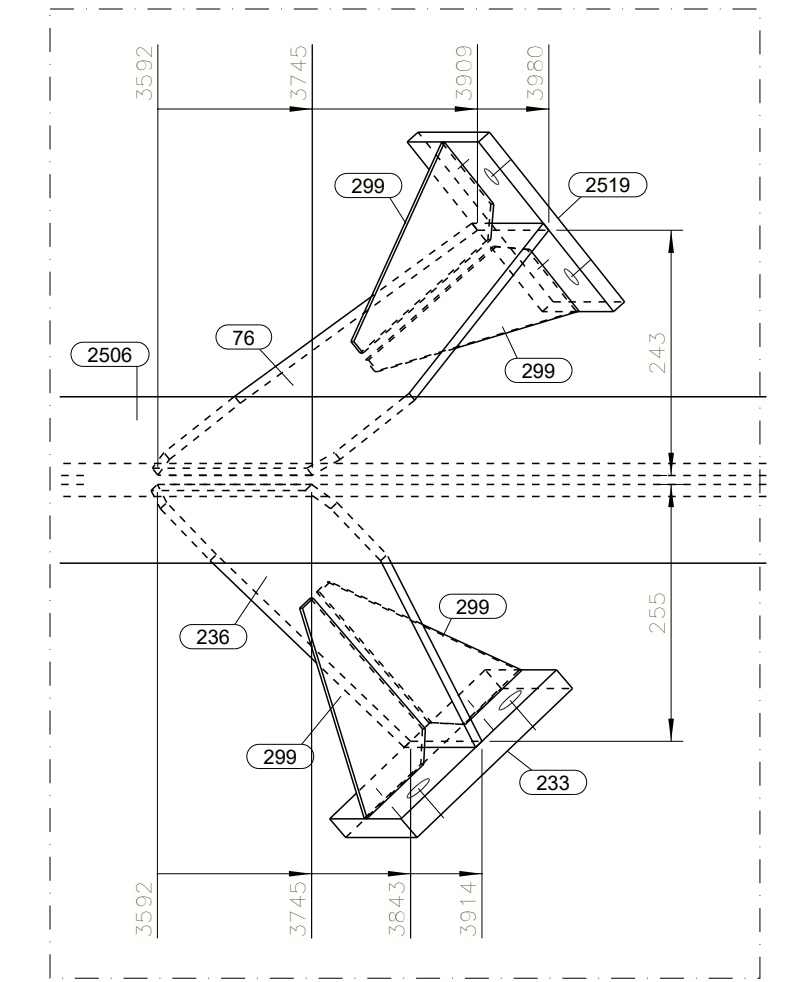
V. FRONTAL
1:10



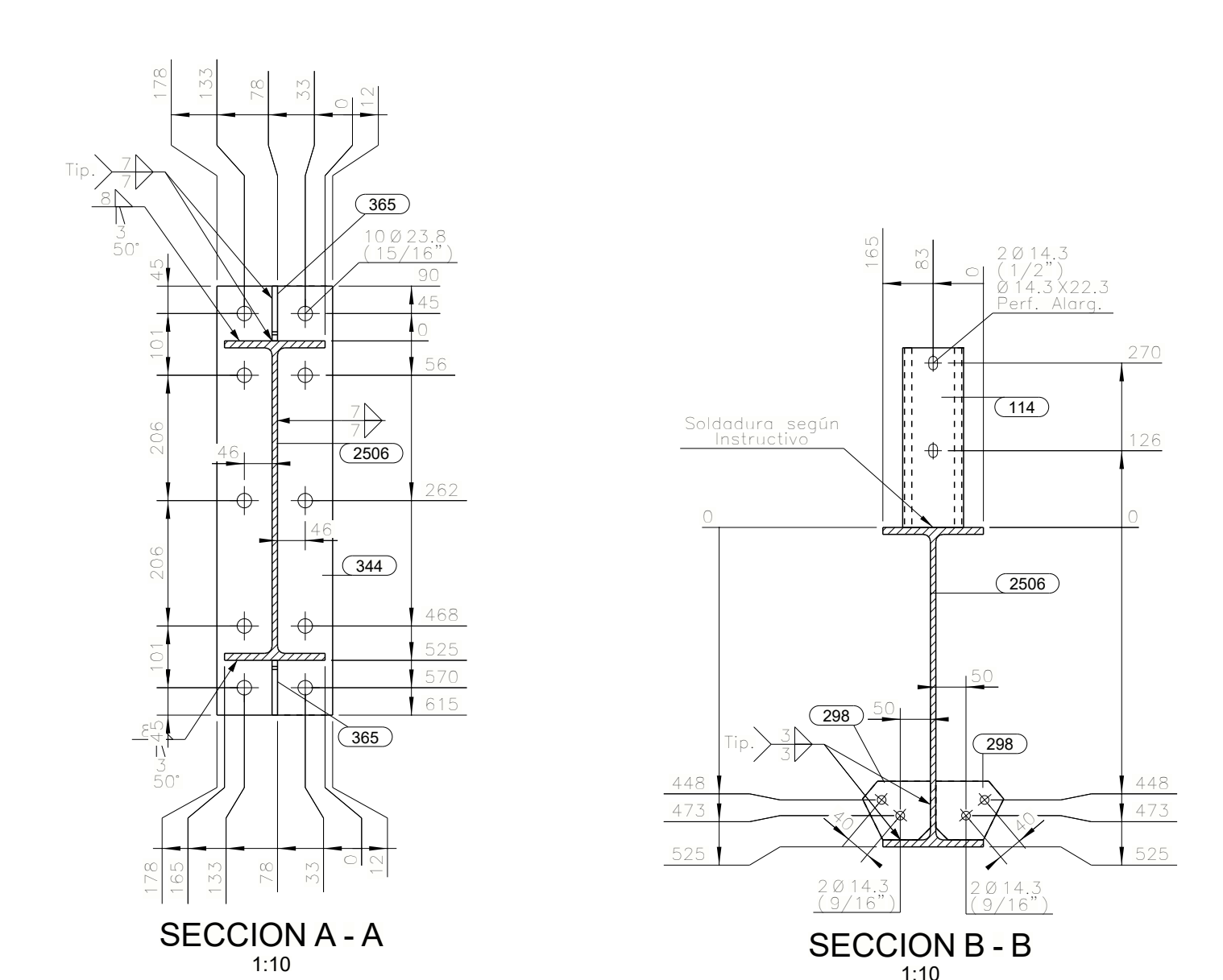
DETALLE 1
1:5



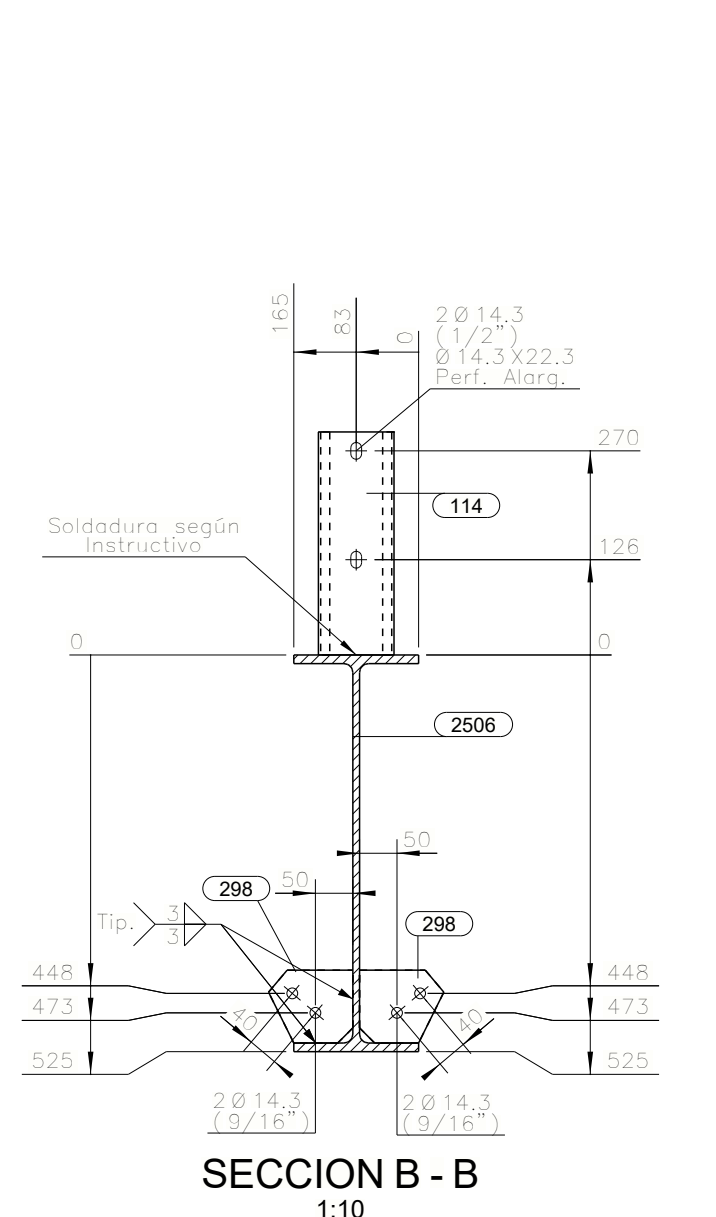
DETALLE 2
1:5



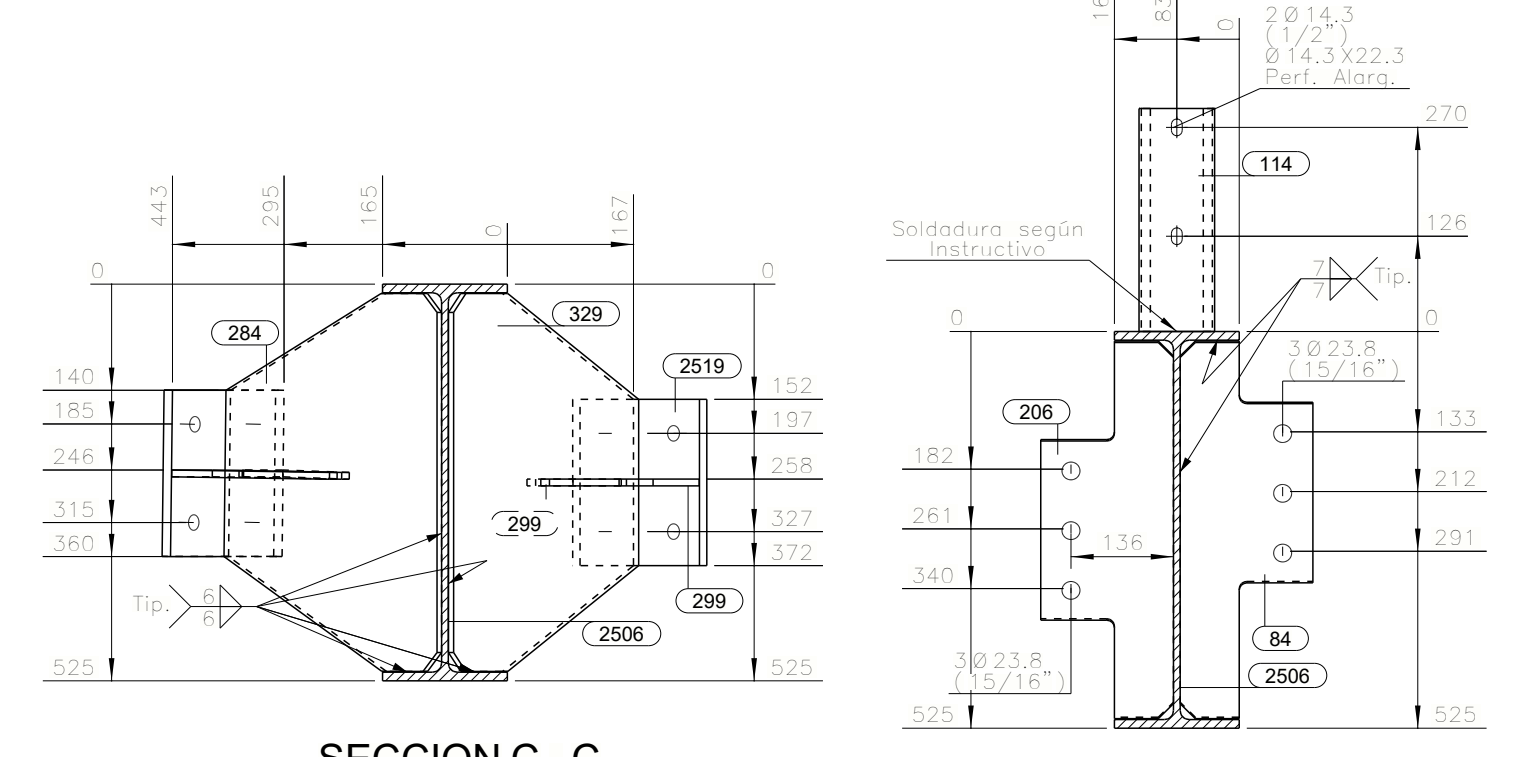
DETALLE 3
1:7.5



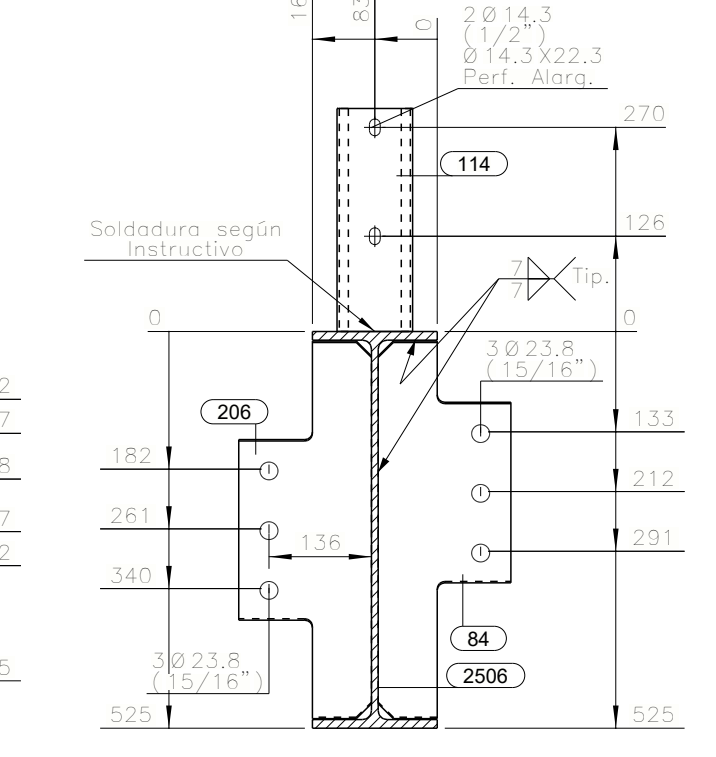
SECCION A - A
1:10



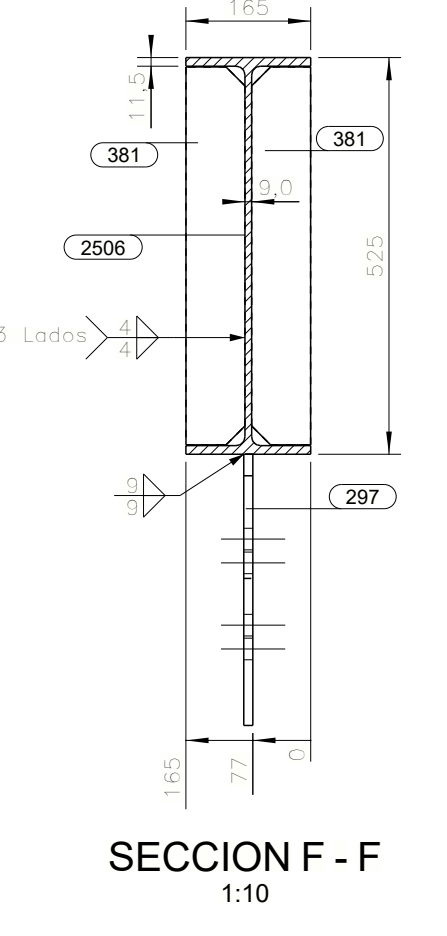
SECCION B - B
1:10



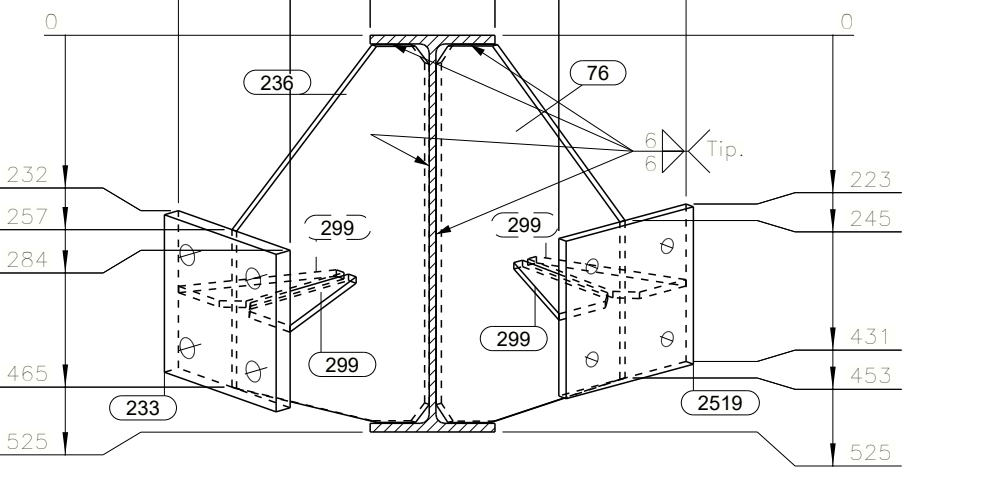
SECCION C - C
1:10



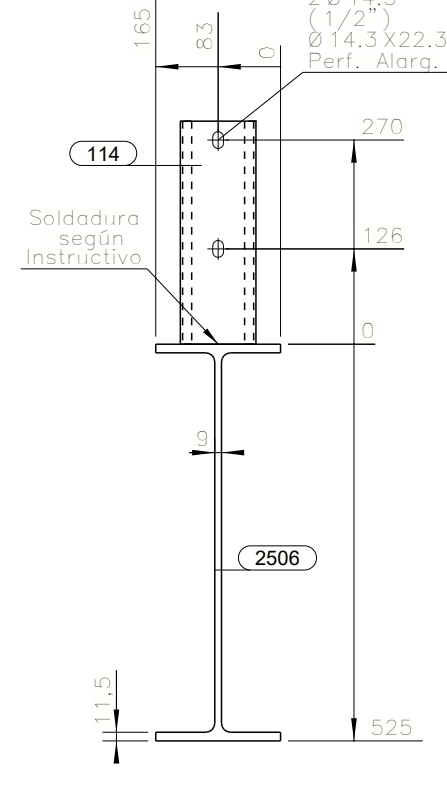
SECCION D - D
1:10



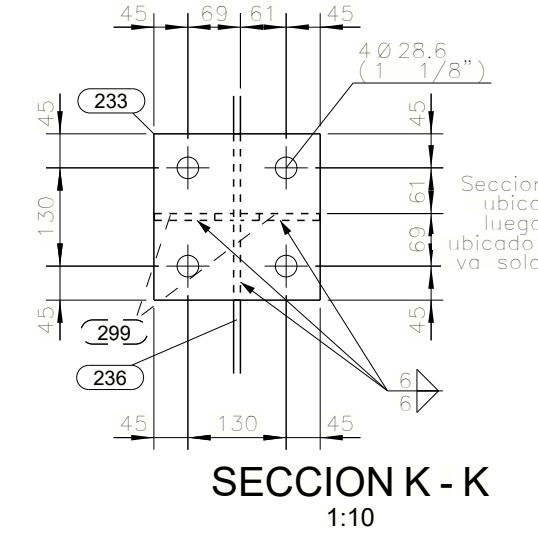
SECCION F - F
1:10



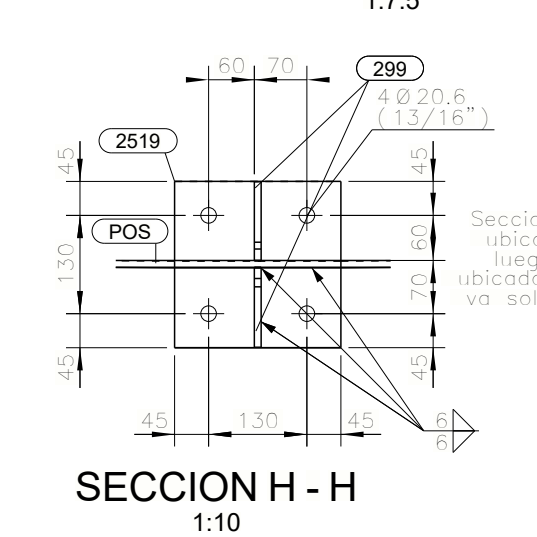
SECCION E - E
1:10



SECCION G - G
1:10



SECCION K - K
1:10



SECCION H - H
1:10

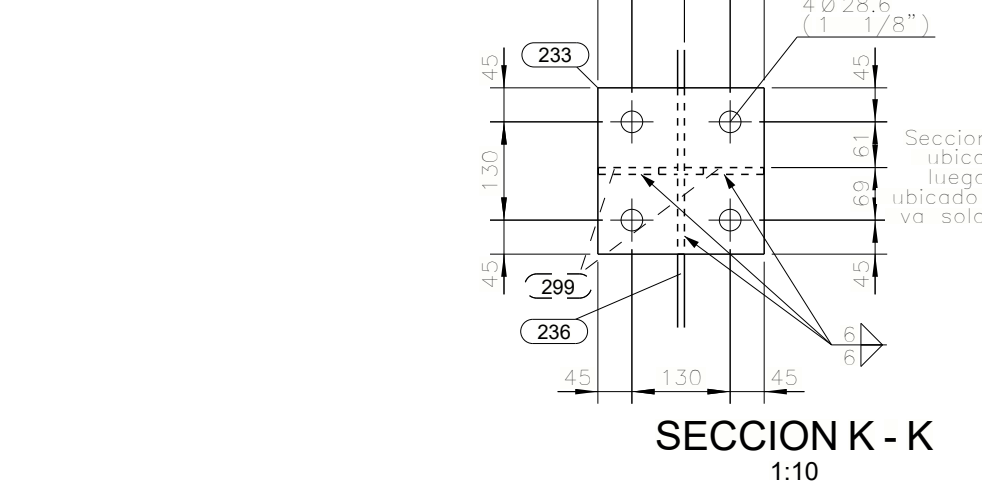
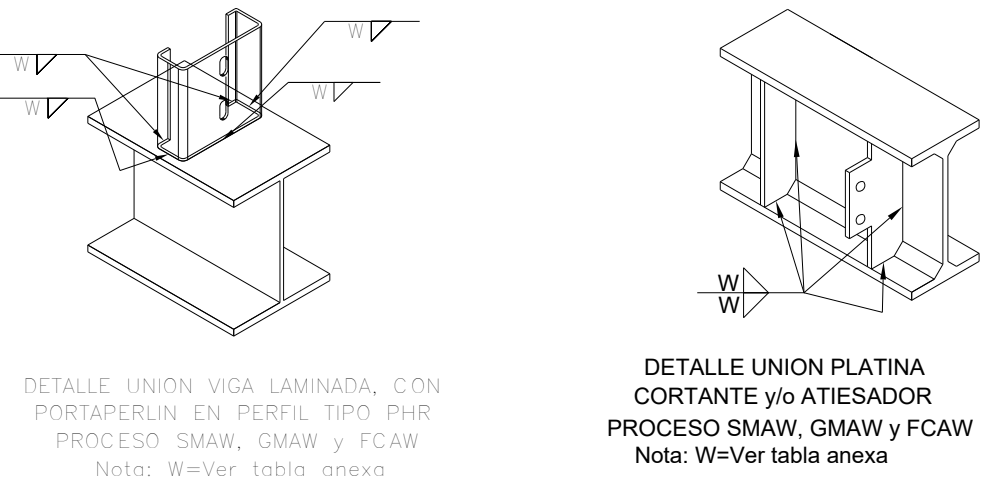
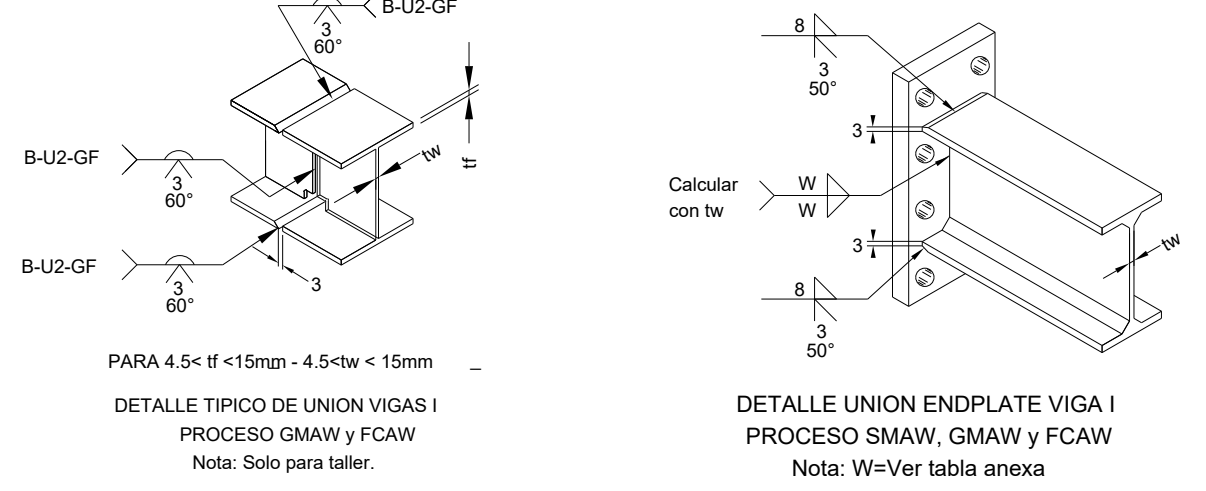
LISTA PARTES DE CONJUNTO

Conjunto: **VC-22** Descripción: **ENSAMBLE DE VIGA** Cantidad: **1** Long. (mm): **12019**

Peso. (Un): **968.72 kg**

PARTES	CUNIT	CANT	DESCRIPCION	LONG.	P. UNIT	P. TOTAL	A. TOTAL	MATERIAL
76	1	1	PL9*378	550	14.68	14.68	0.330	ASTM A572 Gr.50
84	1	1	PL12*176	504	8.33	8.33	0.141	ASTM A572 Gr.50
114	8	8	PHR-C-100X30X3.0	296	1.44	11.46	1.001	ASTM A1011 Gr.50
206	1	1	PL12*176	504	8.33	8.33	0.141	ASTM A572 Gr.50
233	1	1	PL25*220	220	9.50	9.50	0.119	ASTM A572 Gr.50
236	1	1	PL9*344	541	13.16	13.16	0.297	ASTM A572 Gr.50
284	1	1	PLP360	500	13.42	13.42	0.312	ASTM A572 Gr.50
297	1	1	PL12*359	700	23.66	23.66	0.371	ASTM A572 Gr.50
298	12	12	PL4.5*111	96	0.38	4.56	0.237	ASTM A36 Gr.36
299	8	8	PLP105	200	1.48	11.87	0.225	ASTM A572 Gr.50
329	1	1	PLP378	500	13.34	13.34	0.315	ASTM A572 Gr.50
344	1	1	PL19*190	705	10.97	10.97	0.302	ASTM A572 Gr.50
385	2	2	PLP90	150	0.95	1.91	0.039	ASTM A572 Gr.50
381	4	4	PLP78	500	1.84	7.35	0.334	ASTM A36 Gr.36
2506	1	1	W21x44	12000	790.06	790.06	20.040	ASTM A572 Gr.50
2519	3	3	PL15*220	220	5.70	17.10	0.330	ASTM A572 Gr.50

PESO TOTAL DEL PLANO = **968.72 kg** 3 % DE SOLDADURAS = **997.78 kg** AREA TOTAL DEL PLANO = **24.53 m²**



Acabado / Pintura / Ensayo (SRS)

Anticorrosivo / Espesor: Primer Epoxifosfato de zinc Gris RAL 7035 P175 /
 Barrera / Espesor: No Aplica /
 Esmalte / Espesor: Esmalte Alquídico Gris RAL 9006 P175 /
 Tratamiento Superficial: SSPC-SP10

Pertenece al Sistema de Resistencia Sísmica (SRS): NO

TAMANOS DE FILETE	W=4(R)	W=6(R)	W=6(R)
(0) mm(pulg)	Gr.36	Gr.50	Gr.50
3 (1/8")	2	3	
4.5 (3/8")	3	4	
6 (1/4")	4	5	
8 (5/16")	4	6	
9 (3/8")	5	7	
12 (1/2")	7	9	
15 (3/4")	8	11	
19 (3/4")	10	13	
25 (1")	13	18	
32 (1-1/4")	16	22	
38 (1-1/2")	19	26	
50 (2")	25	35	

FILETE sencillo 2W / W
 FILETE doble W / W

INHIERRO

OBRA 22199G
 CEDI Buen Café Chinchina
 CONTIENE: ENSAMBLE DE VIGA

Bodega

PLANO N°:	Calculado:	Dibujado:	Revisado:	Fecha:
22199GF32	Luis H Garza	Andrés FAJ	Darwin Herrera	04.08.2023

MEDIDAS EN mm
 ESCALA: INDICADAS
 REV. NUM: INDICADAS