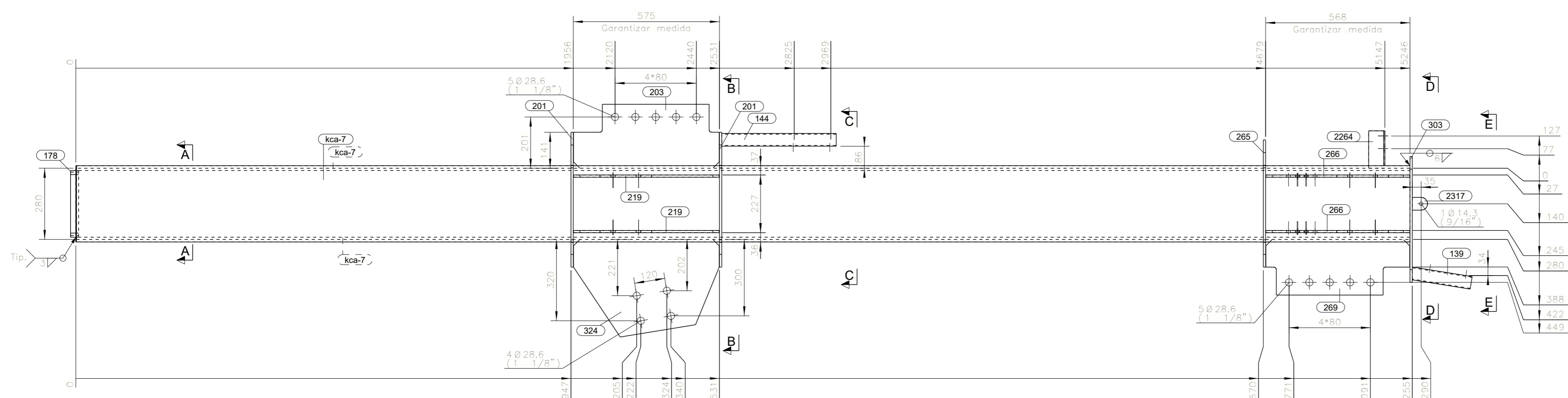
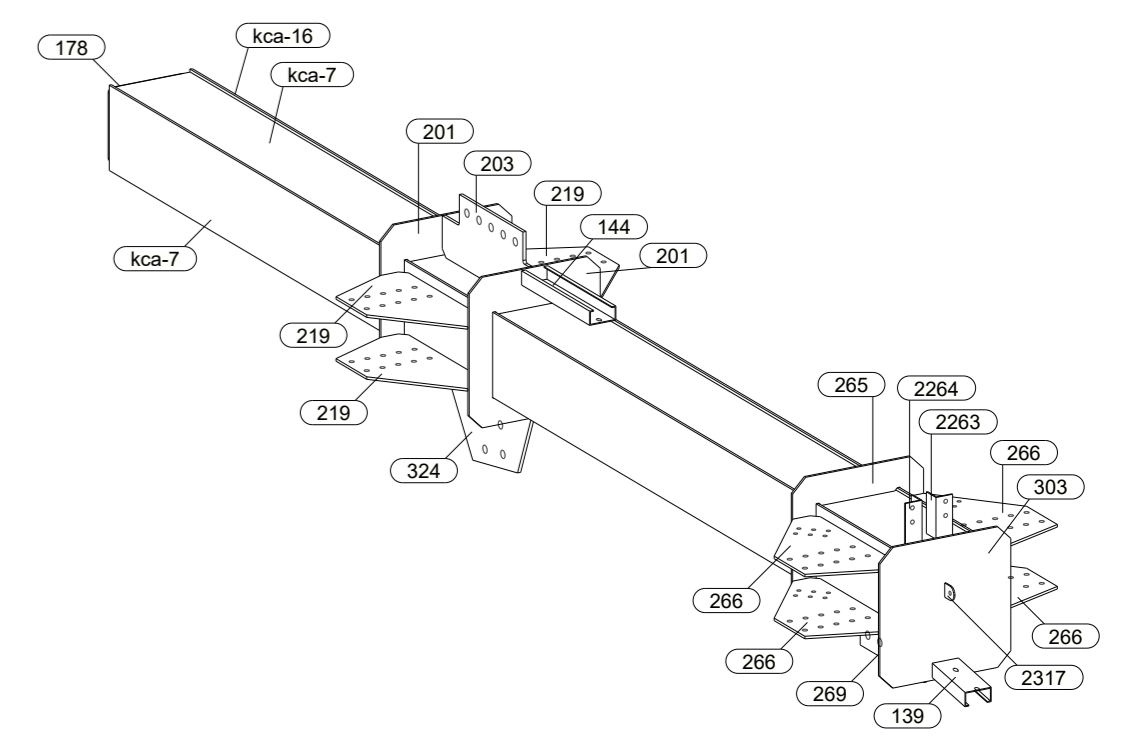


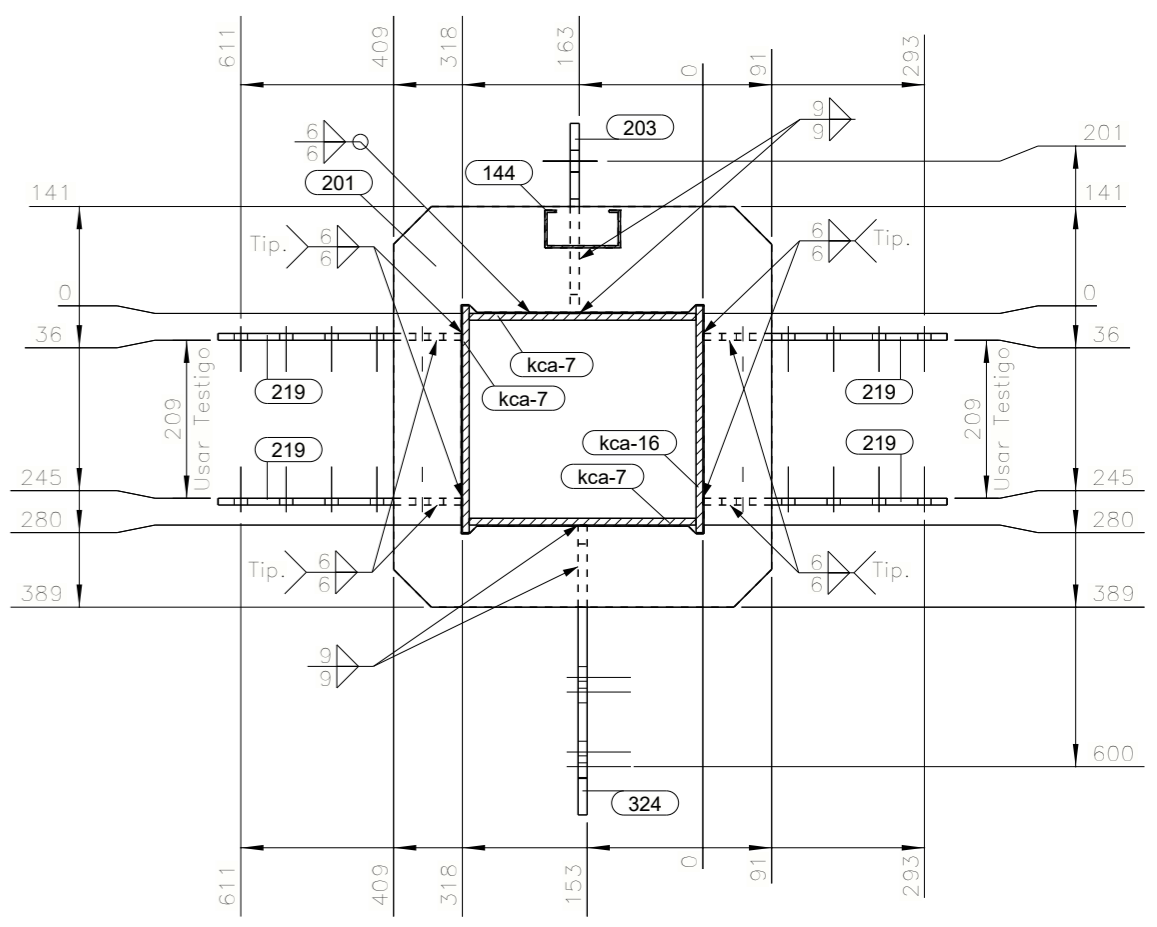
V.SUPERIOR
1:12.5



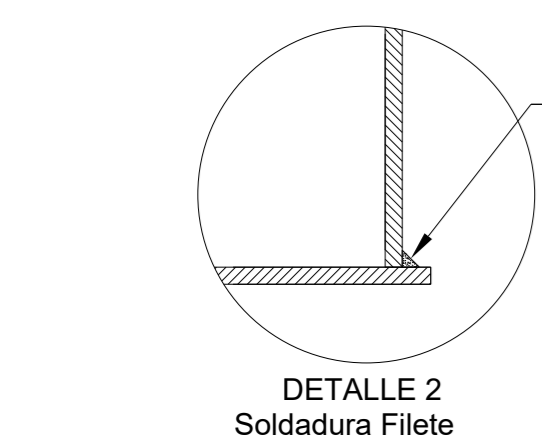
V.FRONTAL
1:12.5



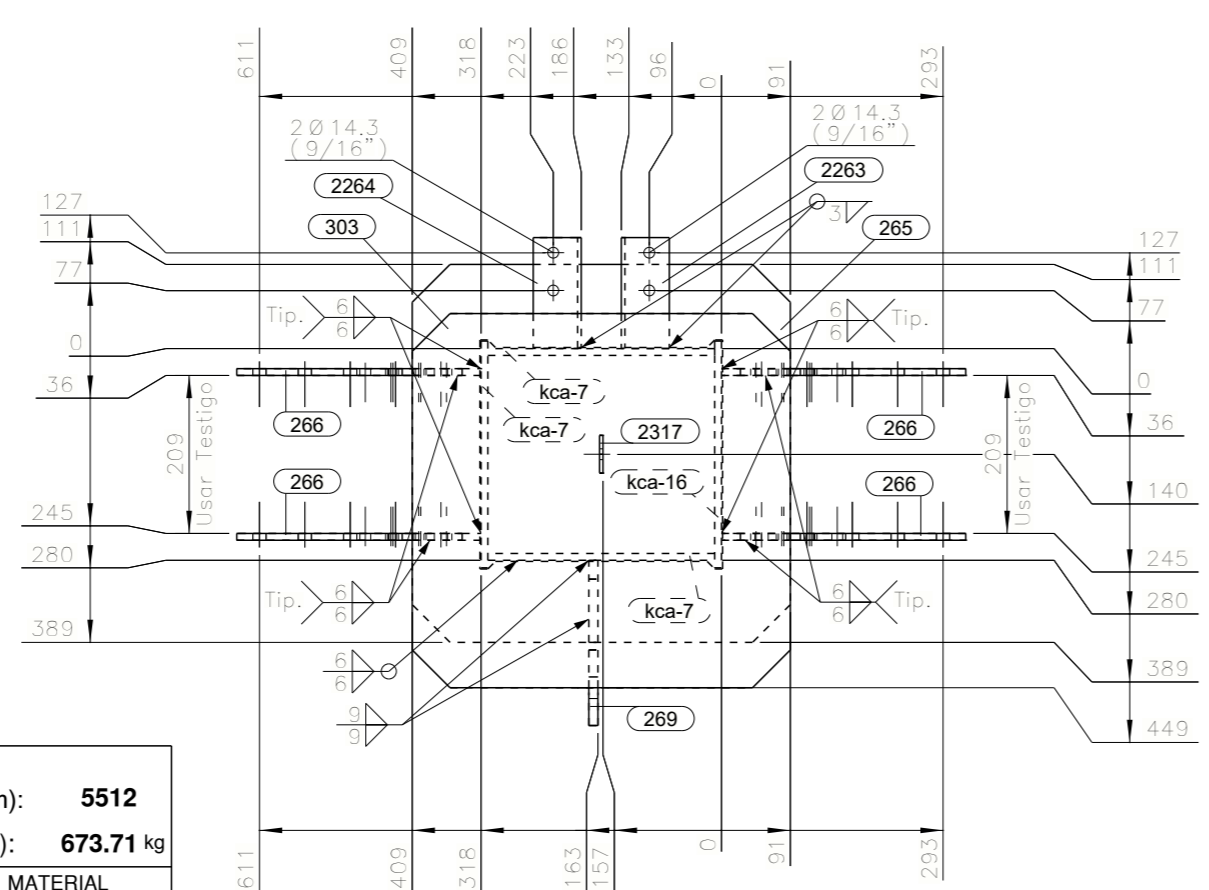
VISTA 3D



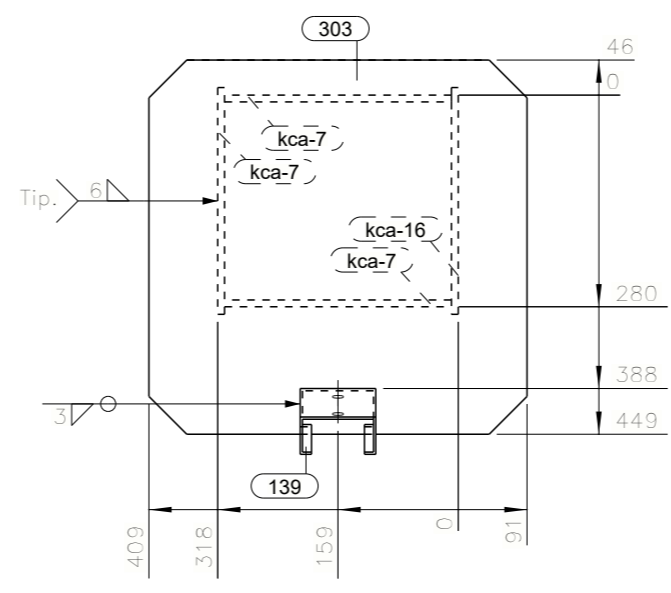
SECCION B - B
1:10



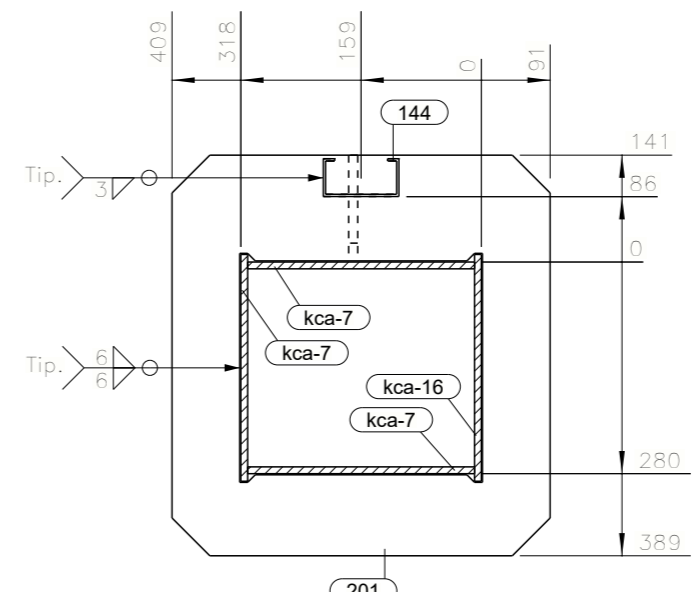
Ver nota



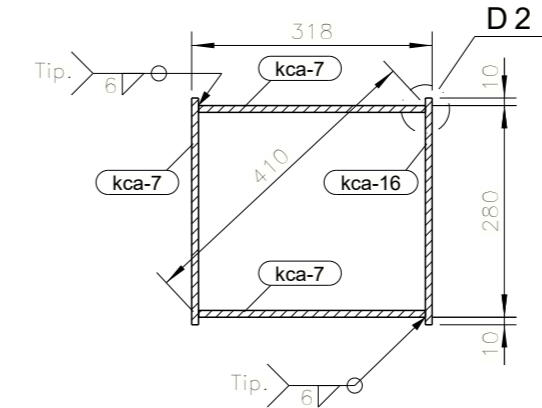
SECCION D - D
1:10



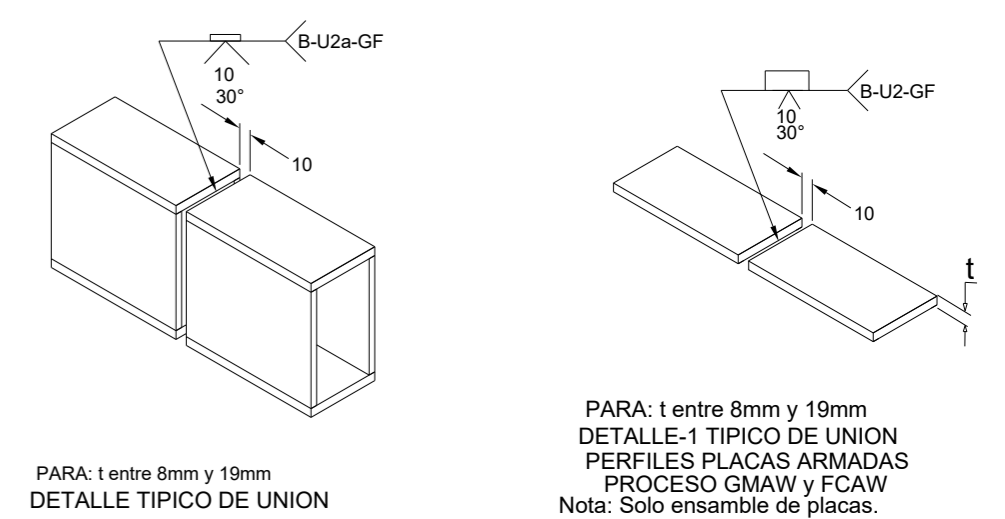
SECCION E - E
1:10



SECCION C - C
1:10



SECCION A - A
1:10



PARA: t entre 8mm y 19mm
DETALLE TÍPICO DE UNION
PERFILES PLACAS ARMADAS
PROCESO GMAW y FCAW
Nota: Taller

NOTA: filete W, en función de detalle 2

Acabado / Pintura / Ensayo (SRS)				
Anticorrosivo / Espesor:	Primer Epoxifosfato de zinc Gris RAL 7035 P/75 //			
Barrera / Espesor:	No Aplica //			
Esmalte / Espesor:	Esmalte Alquidico Gris RAL 9006 P/75 //			
Tratamiento Superficial:	SSPC-SP6			
Pertenece al Sistema de Resistencia Sismica (SRS):				SI

TAMAÑOS DE FILETE				
Nº rev.	Descripción de Revisión	Tipo	Fecha	Revisó
(t)	W=0.49(t)	W=0.68(t)		
mm(pulg.)	Gr.36	Gr.50		
3 (1/8")	2	3		
4.5 (3/16")	3	4		
6 (1/4")	4	5		
8 (5/16")	4	6		
12 (1/2")	7	9		
15 (5/8")	8	11		
19 (3/4")	10	13		
25 (1")	13	18		
32(1-1/4")	16	22		
38(1-1/2")	19	26		
50 (2")	25	35		
filete	2W			
sencillo	W			
filete doble	W			

OBRA :22199G
CEDI Buen Café Chinchina

CONTIENE : ENSAMBLE DE COLUMNA
Bodega

CALCULO: Conacero FECHA: 28.07.2023
DETALLADO: Conacero MEDIDAS EN: mm
MODELO: Andres FAJ ESCALA: INDICADAS
DIBUJO: Jhon Jairo O. REVISO: REV. NUM:
PLANO Nº: **22199GF5** **K-18**

LISTA PARTES DE CONJUNTO							
PARTE	C/UNIT	CANT	DESCRIPCION	LONG.	P. UNIT	P. TOTAL	A. TOTAL
139	1	1	PHR-C 100X50X3.0	239	1.16	1.16	0.101
144	1	1	PHR-C 100X50X3.0	450	2.19	2.19	0.191
178	1	1	PL 1/4X1-1/4	1077	1.70	1.70	0.082
201	2	2	PL9*500	530	18.72	37.44	0.732
203	1	1	PL12*251	573	13.57	13.57	0.273
219	4	4	PL9*323	573	13.07	52.29	1.187
265	1	1	PL9*500	500	17.66	17.66	0.335
266	4	4	PL9*323	566	12.91	51.64	1.175
269	1	1	PL12*219	566	11.65	11.65	0.233
303	1	1	PL9*495	500	17.49	17.49	0.502
324	1	1	PL12*383	573	20.69	20.69	0.363
2263	1	1	L2-1/2X3/16	147	0.67	0.67	0.037
2264	1	1	L2-1/2X3/16	147	0.67	0.67	0.037
2317	1	1	PL4.5*50	60	0.11	0.11	0.006
kca-7	3	3	PL9*300	5246	111.19	333.58	9.741
kca-16	1	1	PL9*300	5246	111.19	111.19	3.247

Long. (mm): 5512
Cantidad: 1
Peso. (Un): 673.71 kg
Descripción: ENSAMBLE DE COLUMNA

PESO TOTAL DEL PLANO = 673.71kg + 3 % DE SOLDADURAS = 693.92 kg AREA TOTAL DEL PLANO = 18.24 m2