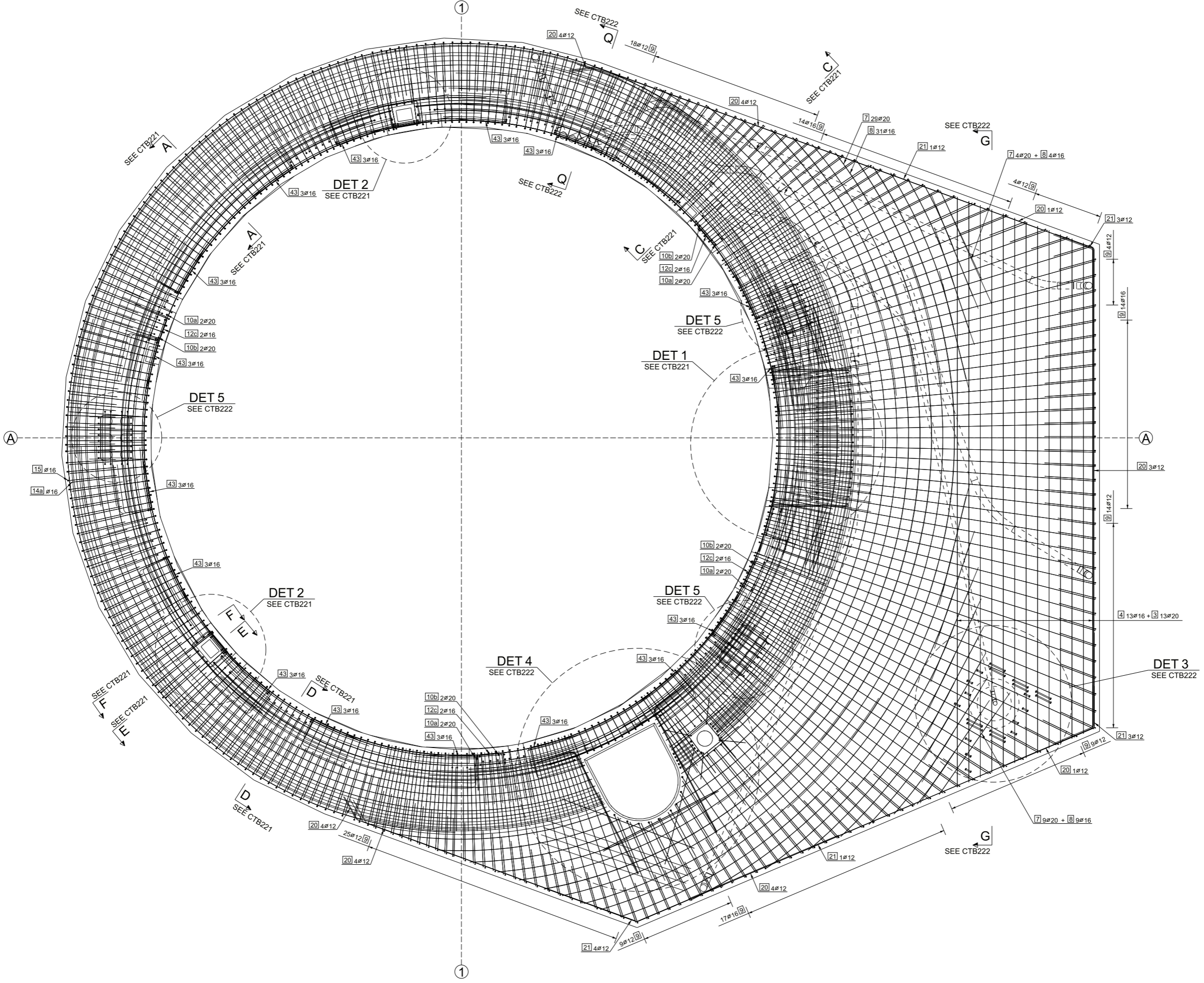


REINFORCEMENT SCHEDULE

Mark	Name	Diam	NOTE 1 Pcs	NOTE 2 kg/total
1	RADIAL MAIN UPPER	20	128	840.08
2	EXTRA L-BAR	16	15	26.52
2	RADIAL MAIN BOTTOM	16	128	502.68
3	TRANSV REINF UPPER	20	13	225.19
4	TRANSV REINF BOTTOM	16	13	144.05
7	CIRC TRANSV UPPER	20	29	366.72
7	TRANSV UPPER EXTRA	20	13	52.18
8	CIRC TRANSV BOTTOM	16	31	267.11
8	TRANSV BOTTOM EXTRA	16	13	26.29
9	U-STIRRUP	12	83	95.61
9	U-STIRRUP	16	45	113.37
10	EXTRA L-BAR	20	70	266.63
10a	CIRCULAR BARS AT TOP	20	39	645.41
10a	U-BAR AT TOP OF CONE	20	11	49.21
10b	CIRCULAR BARS AT TOP	20	40	649.01
10b	U-BAR AT TOP OF CONE	20	11	45.66
11	EXTRA L-BAR	20	42	156.13
11a	CIRCULAR BARS AT BOT	20	27	227.10
11b	CIRCULAR BARS AT BOT	20	18	247.82
12	CIRCULAR BAR INNER	16	49	436.61
12a	CIRCULAR BAR JACK	16	8	24.17
12b	CIRCULAR BAR SUPPORT	16	32	75.57
12c	U-BAR AT INNER SIDE	16	8	15.55
12d	EXTRA HORIZONTAL	12	8	6.11
12e	CIRCULAR BAR MANHOLE	16	10	30.61
13	CIRCULAR BARS	16	42	661.20
14a	VERTICAL STIRRUP	16	271	1979.76
14b	U-STIRRUP AT SUPPORT	16	55	152.97
15	U-STIRRUP	16	149	392.19
16	U-STIRRUP AT DUCTING	16	18	64.46
17	CIRCULAR AT DUCTING	25	4	55.50
18	CIRCULAR AT DUCTING	25	4	48.23
19	L-STIRRUP	16	17	26.34
20	BAR AT EDGE	12	25	74.87
21	STIRR AT SLAB CORNER	12	12	16.60
23a	PADEYE HORIZ STIRRUP	16	6	21.52
23b	PADEYE VERT U-STIRR	16	36	78.51
23c	PADEYE U-STIRRUP	12	18	10.61
24	VER STIRR AT SUPPORT	16	4	9.76
25a	HORIZ STIRR RHS PIPE	16	4	11.96
25b	EXTRA VER RHS PIPE	16	8	31.97
26	U-STIRRUPS MH FRONT	20	9	40.63
27	U-STIRRUPS MH SIDE	12	10	9.23
27	HORIZON AT MH SIDE	16	18	46.61
27	STIRRUPS MH SIDE	16	13	21.58
27	STIRRUPS MH SIDE	20	13	68.41
28	YOYO U-STIRRUPS	12	4	3.57
29	STRINGER MAN HOLE	12	6	9.69
29	STRINGER MAN HOLE	20	17	84.98
30	STRINGER YOYO HOLE	12	12	9.45
30	U-STIRRUPS YOYO HOLE	16	3	4.34
30	U-STIRRUPS YOYO HOLE	20	6	26.84
35	VERTICAL STIRRUP	16	10	62.05
38	EXTRA LOWER BARS	20	12	46.93
39	EXTRA UPPER BARS	25	8	67.73
40	CRANE U-STIRRUPS	12	42	21.71
42	EXTRA L-BAR	25	12	92.33
42a	CIRCULAR BARS AT TOP	25	9	138.28
42b	CIRCULAR BARS AT BOT	25	9	81.41
43	EXTRA HORIZONTAL	16	48	121.89
44a	ADD U-BAR DUCTING	25	6	79.38
44b	EXTRA BAR AT DUCT	16	10	21.63
44c	EXTRA L-BAR	16	10	27.10
				Total weight (kg): 10268.34



PLAN VIEW
1:25