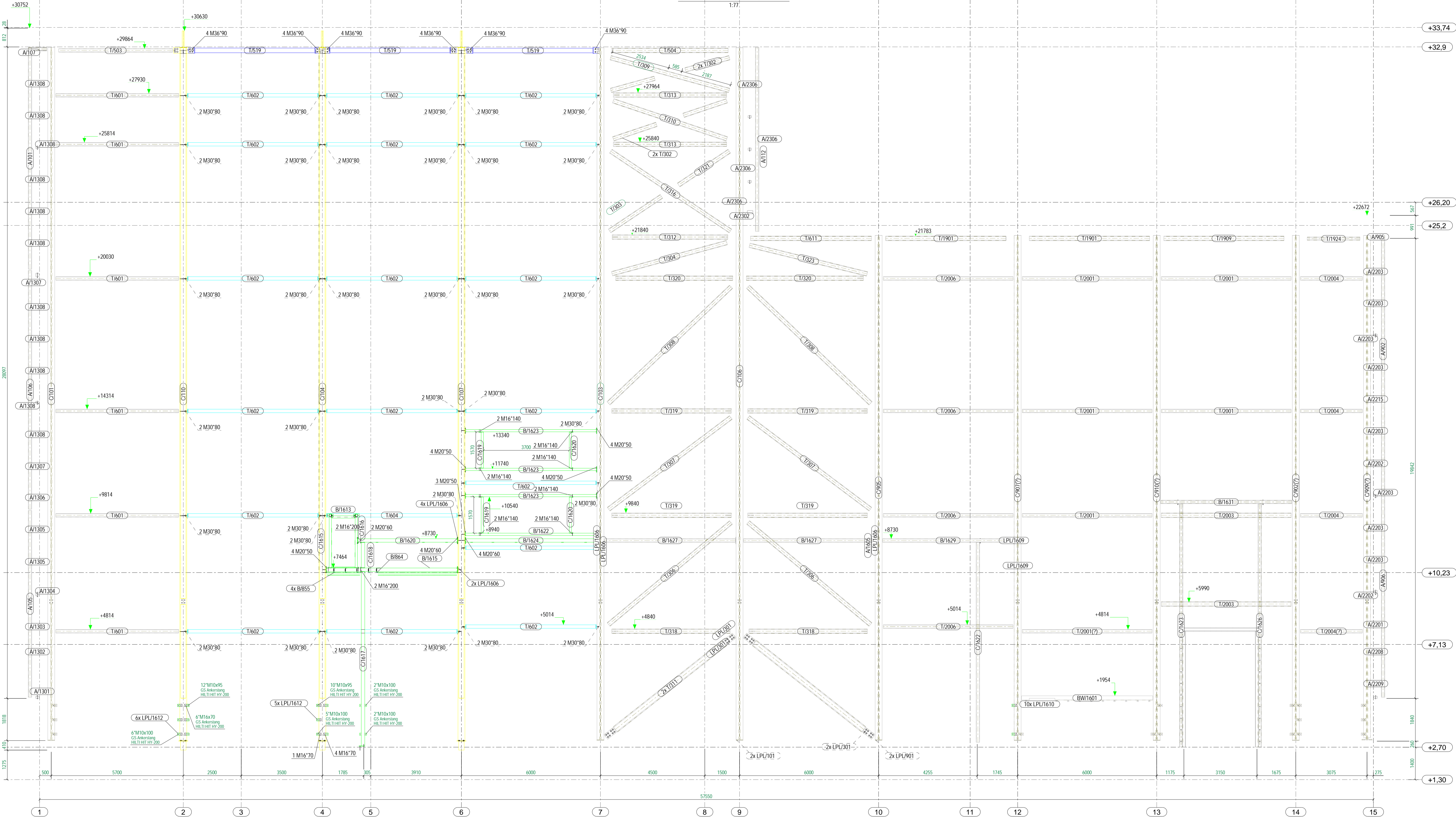


GA.2 SECTION - GRID H
1:77



- 9784A1 - START NUMBER 101
- 9784A2 - START NUMBER 201
- 9784A3 - START NUMBER 301
- 9784A4 - START NUMBER 401
- 9784A4A - START NUMBER 1801
- 9784A5 - START NUMBER 501
- 9784A5A - START NUMBER 1901
- 9784A6 - START NUMBER 601
- 9784A6A - START NUMBER 2001
- 9784A7 - START NUMBER 701
- 9784A8 - START NUMBER 801
- 9784A9 - START NUMBER 901
- 9784A10 - START NUMBER 1001
- 9784A11 - START NUMBER 1101
- 9784A12 - START NUMBER 1201
- 9784A12A - START NUMBER 2101
- 9784A13 - START NUMBER 1301
- 9784A13A - START NUMBER 2201
- 9784A13B - START NUMBER 2301
- 9784A14 - START NUMBER 1401
- 9784A15 - START NUMBER 1501
- 9784A16 - START NUMBER 1601
- 9784A16A - START NUMBER 2401

ALL Bolts must be tightened with torque. See table below
Use Snap-right model for documentation:

Bolt quality B.8	Torque
BOLT M12 B.8	85 Nm
BOLT M16 B.8	254 Nm
BOLT M20 B.8	397 Nm
BOLT M24 B.8	646 Nm
BOLT M27 B.8	1202 Nm
BOLT M30 B.8	1366 Nm
BOLT M36 B.8	2377 Nm

Bolt quality S3.9	Torque
BOLT M36	1493 Nm

No REV MARK REVISION DESCRIPTION	CREATED APPROVED REV. DATE	
PROJECT Sent for approval Sent to production	NAME _____	DESIGNER: _____ EXC SCALE 1:77 ORDER NO.: _____ DRAWING No.: 05.6
GA.2 SECTION - GRID H		