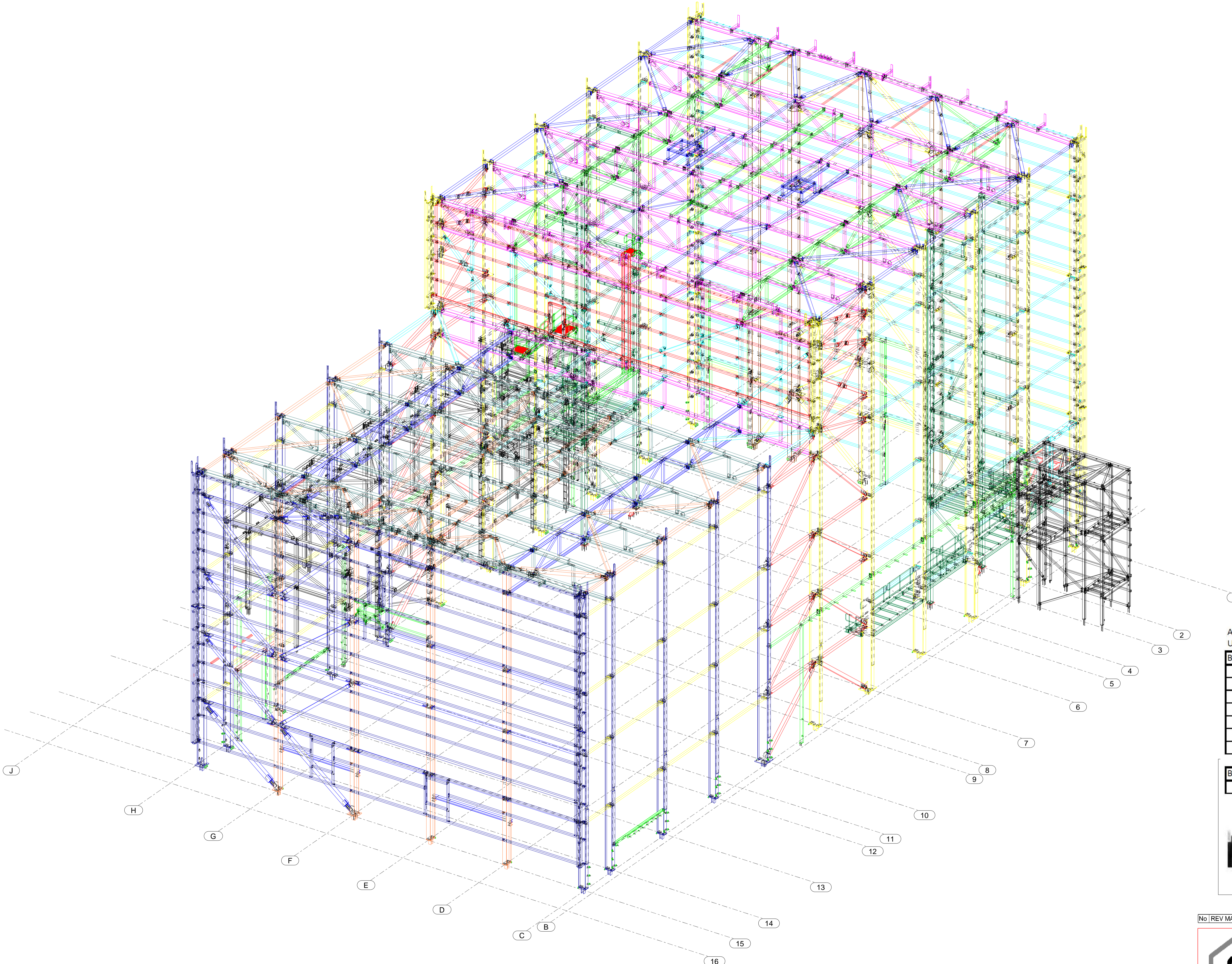


3D View
1:120

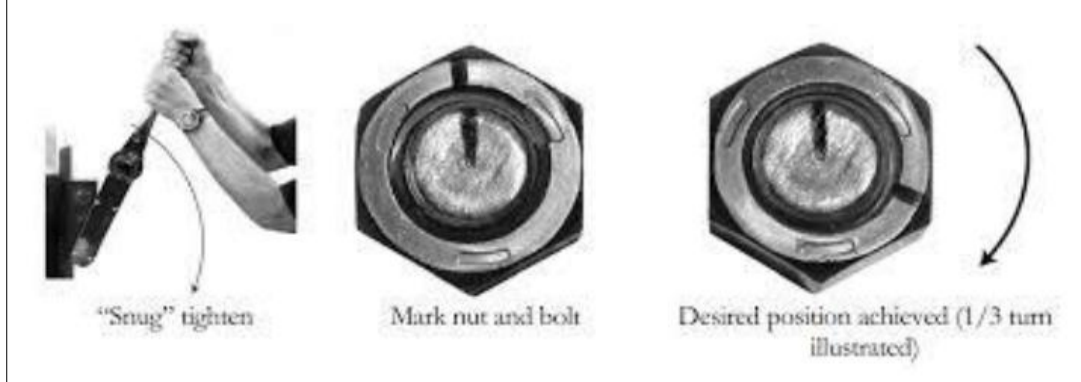


- 9784A1 - START NUMBER 101
- 9784A2 - START NUMBER 201
- 9784A3 - START NUMBER 301
- 9784A4 - START NUMBER 401
- 9784A4A - START NUMBER 1801
- 9784A5 - START NUMBER 501
- 9784A5A - START NUMBER 1901
- 9784A6 - START NUMBER 601
- 9784A6A - START NUMBER 2001
- 9784A7 - START NUMBER 701
- 9784A8 - START NUMBER 801
- 9784A9 - START NUMBER 901
- 9784A10 - START NUMBER 1001
- 9784A11 - START NUMBER 1101
- 9784A12 - START NUMBER 1201
- 9784A12A - START NUMBER 2101
- 9784A13 - START NUMBER 1301
- 9784A13A - START NUMBER 2201
- 9784A13B - START NUMBER 2301
- 9784A14 - START NUMBER 1401
- 9784A15 - START NUMBER 1501
- 9784A16 - START NUMBER 1601
- 9784A16B - START NUMBER 2401

ALL Bolts must be tightened with torque, See table below
Use **Snug-tight** model for documentation

Bolt quality 8.8	Torque
BOLT M12 8.8	85 Nm
BOLT M16 8.8	204 Nm
BOLT M20 8.8	397 Nm
BOLT M24 8.8	686 Nm
BOLT M27 8.8	1002 Nm
BOLT M30 8.8	1366 Nm
BOLT M36 8.8	2377 Nm

Bolt quality 10.9	Torque
BOLT M36	1493 Nm



No	REV MARK	REVISION DESCRIPTION	CREATED	APPROVED	REV. DATE

Give Steel ce

PROJECT: Sent for approval / Sent to production
NAME: _____
3D View

DESIGNER: _____
EXC SCALE: **1:120**
ORDER NO.: _____
DRAWING No.: **01**