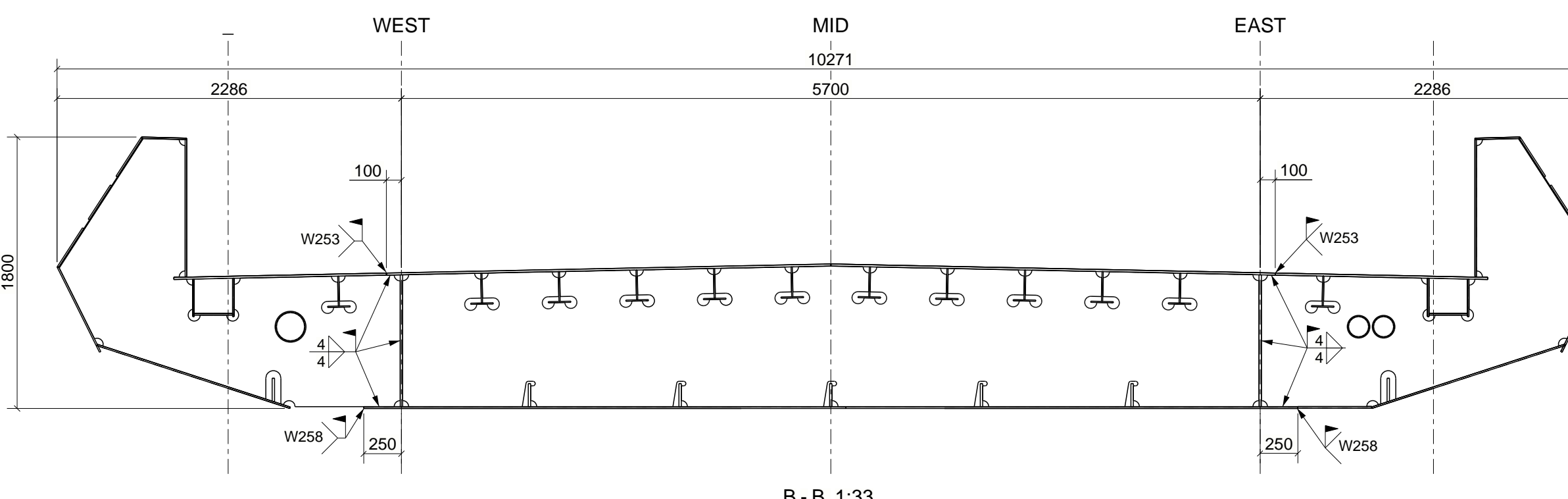
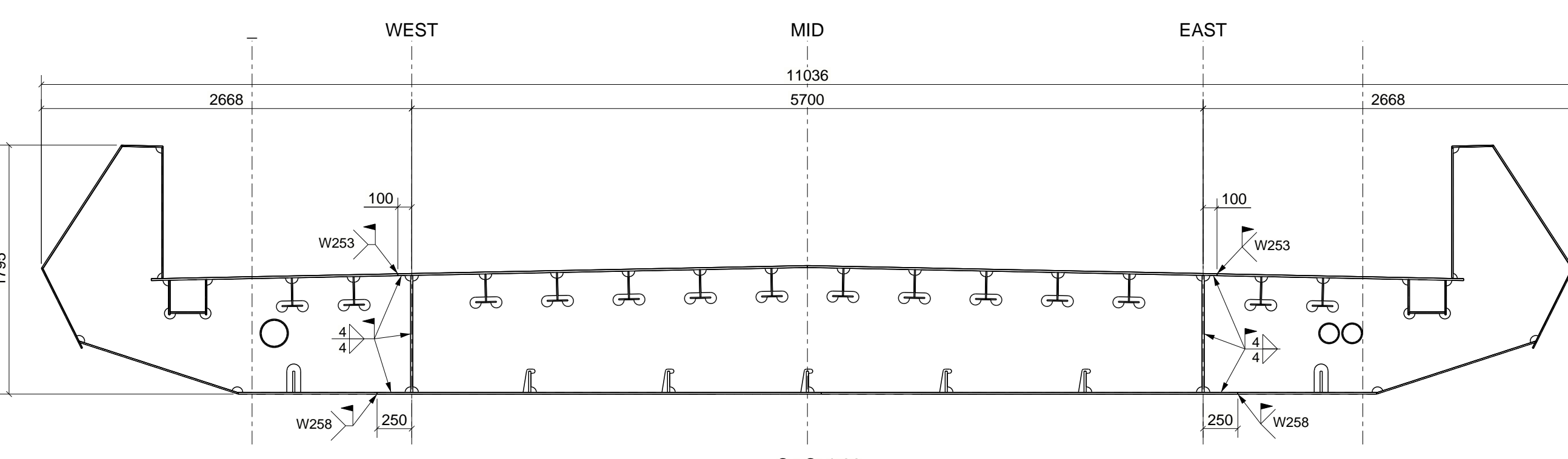


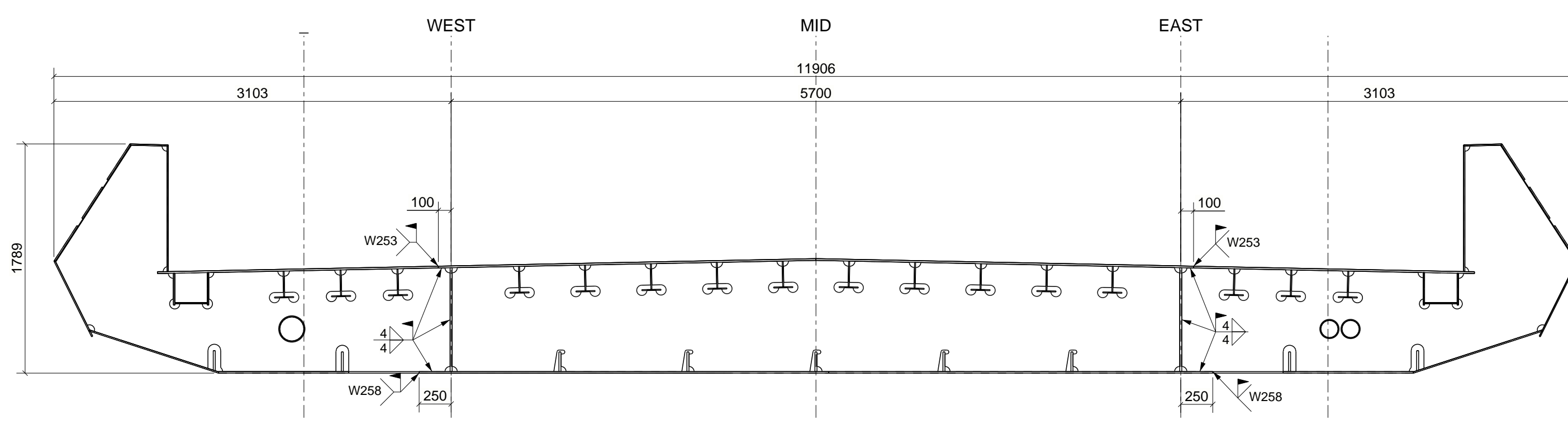
A - A, 1:33



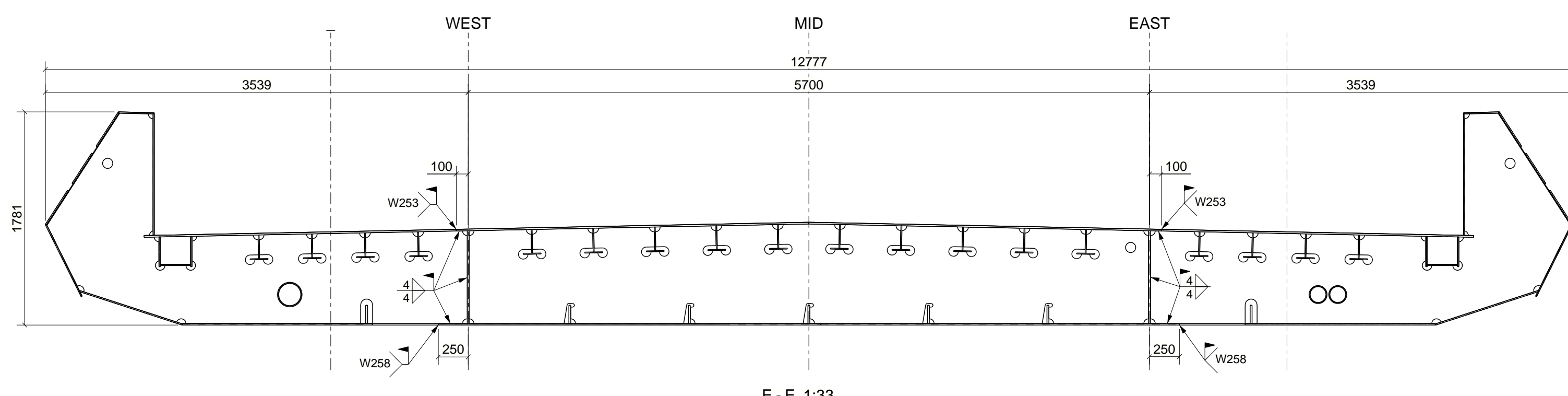
B - B, 1:33



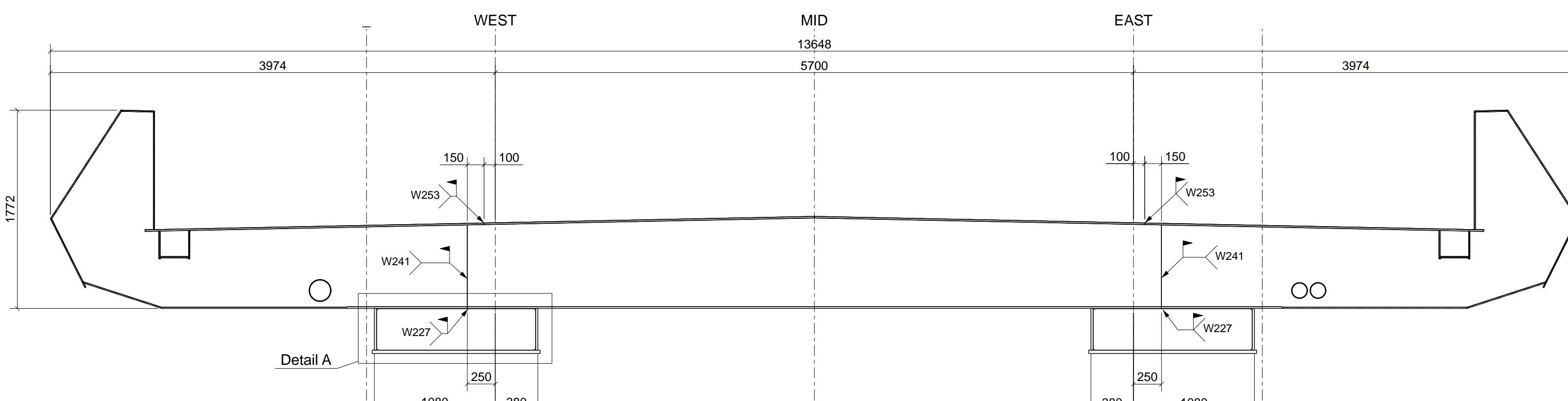
C - C, 1:33



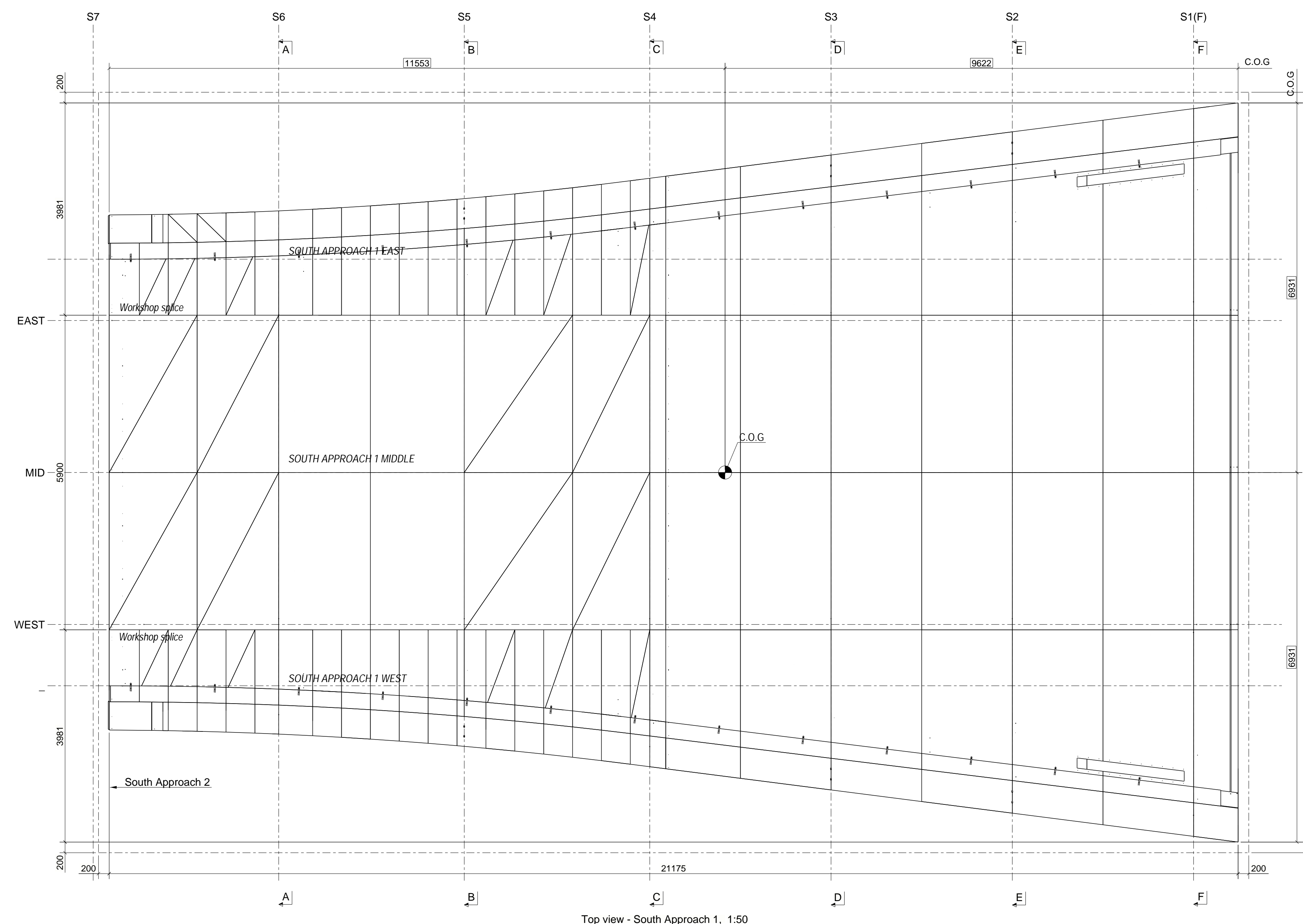
D - D, 1:33



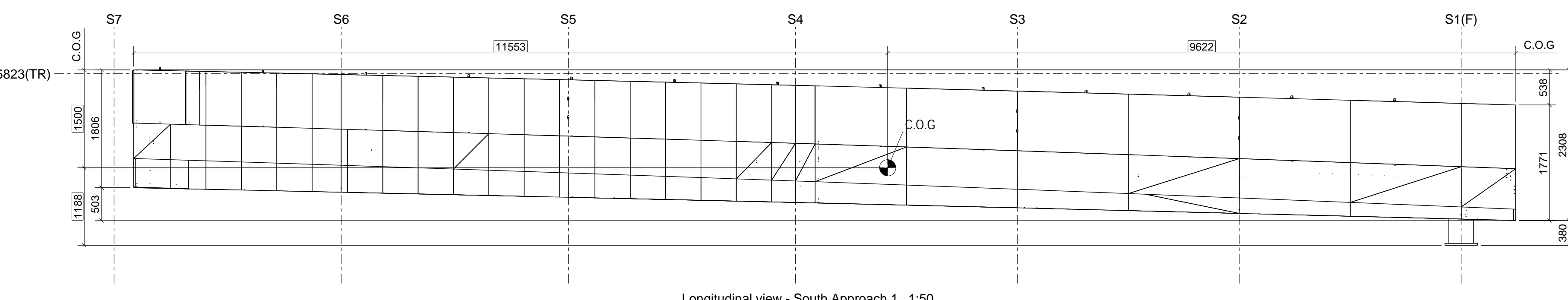
E - E, 1:33



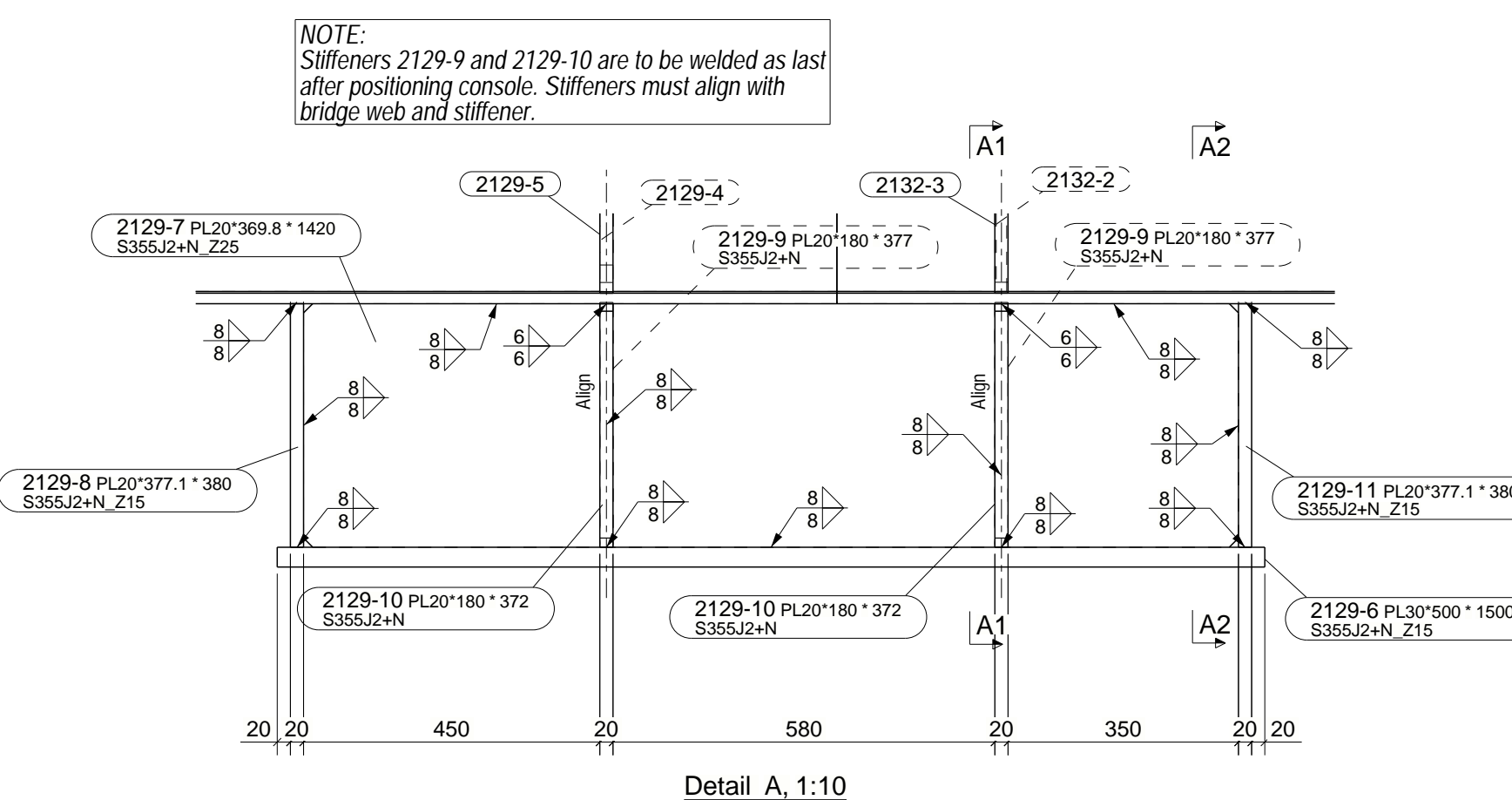
F - F, 1:33



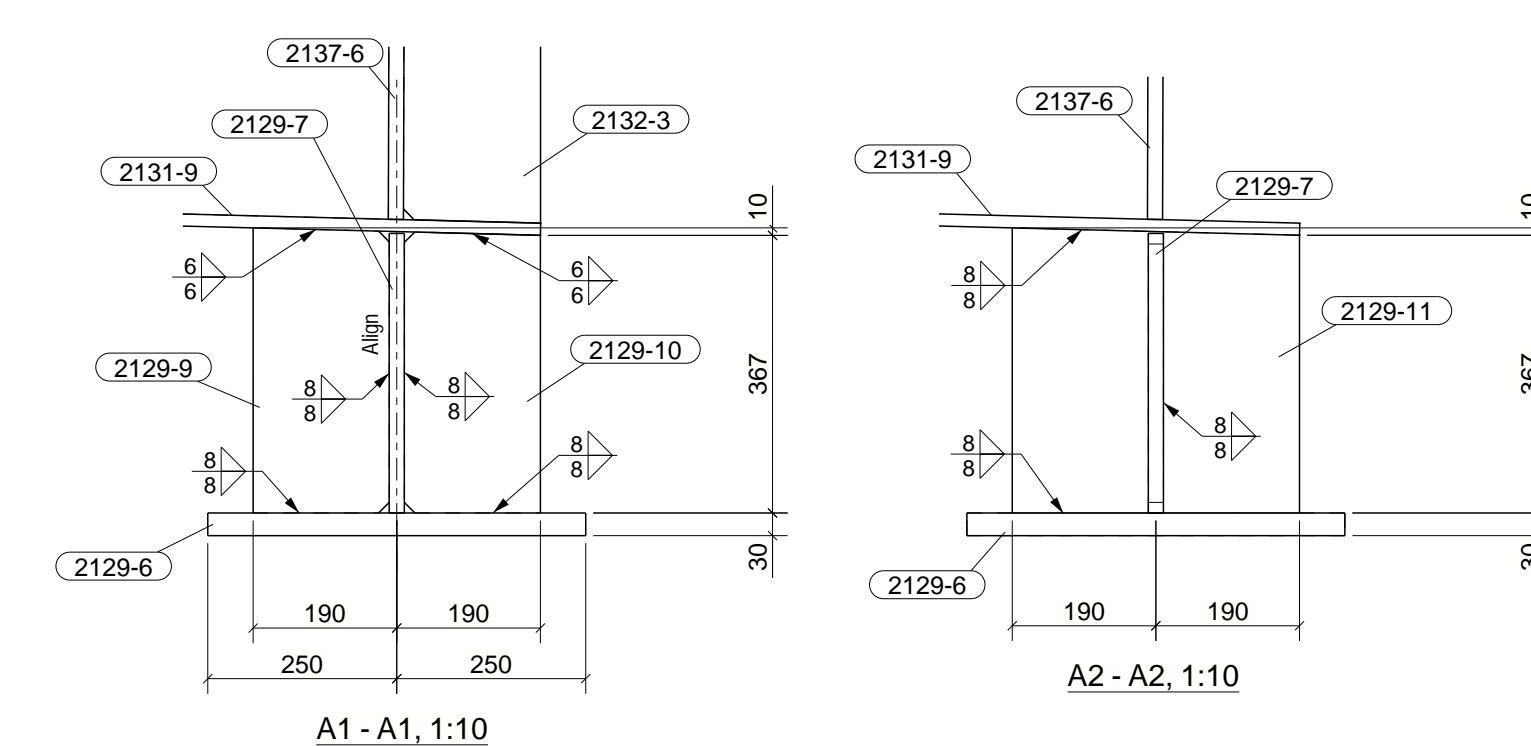
Top view - South Approach 1, 1:50



Longitudinal view - South Approach 1, 1:50



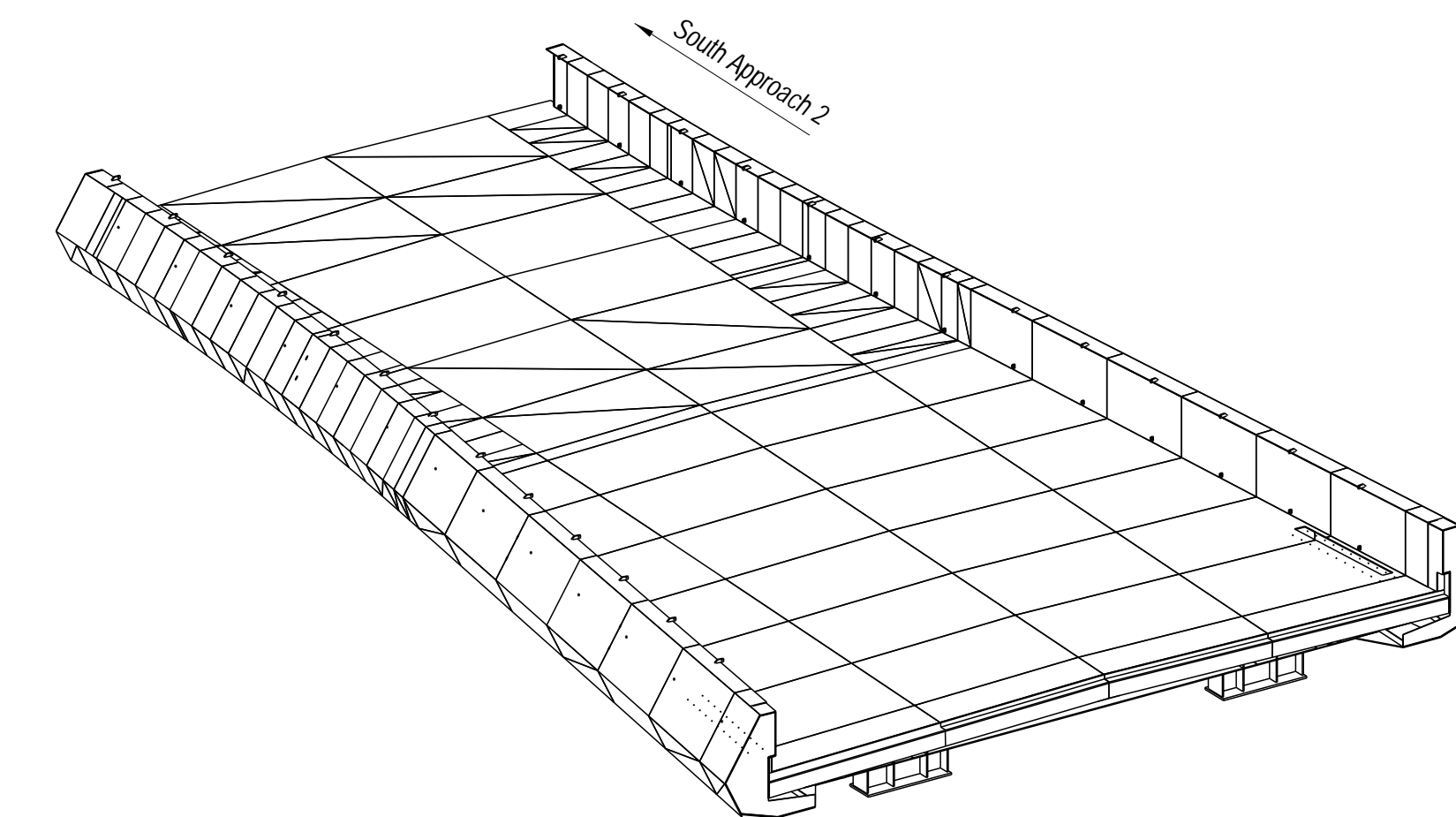
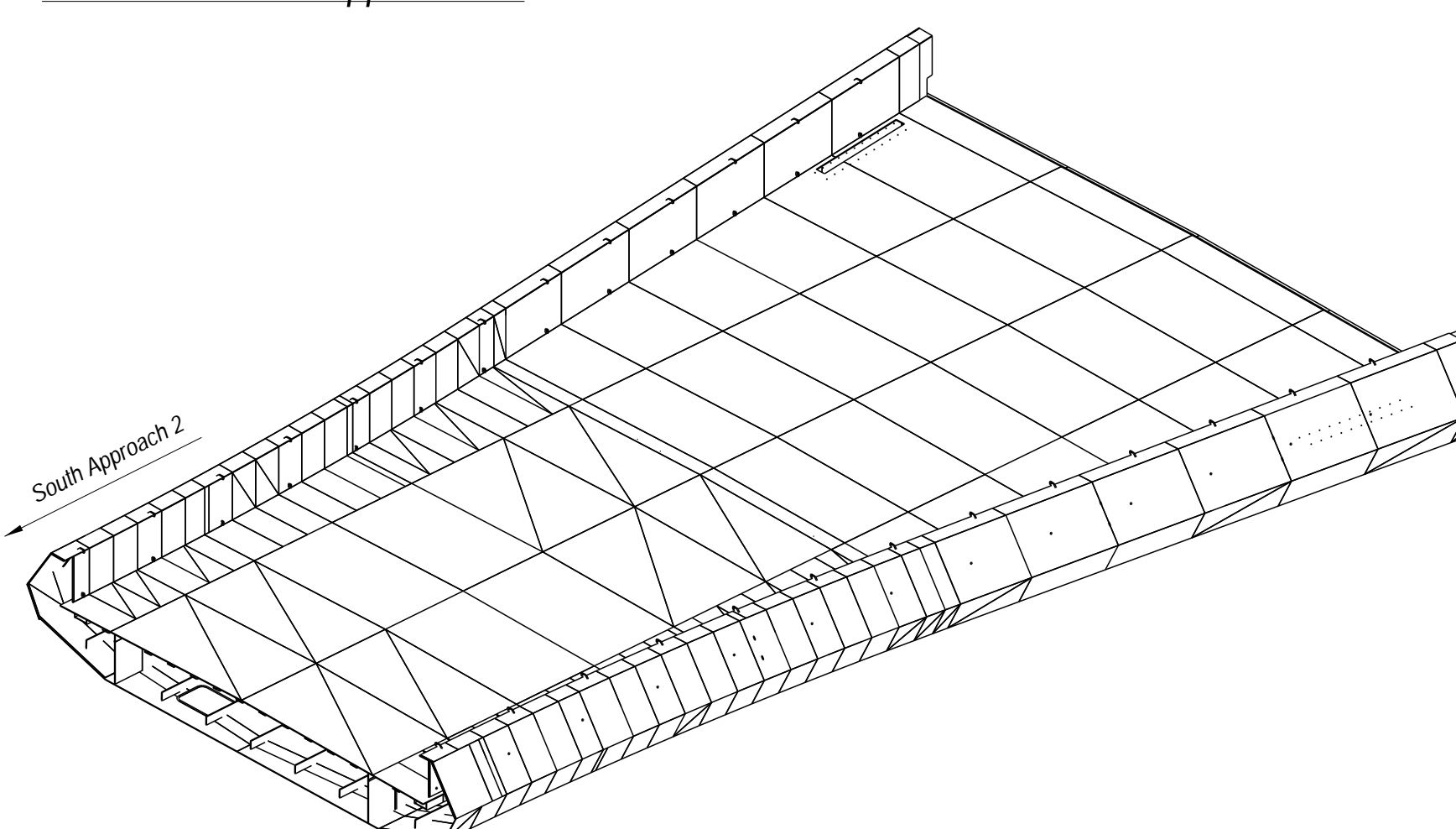
Detail A, 1:10



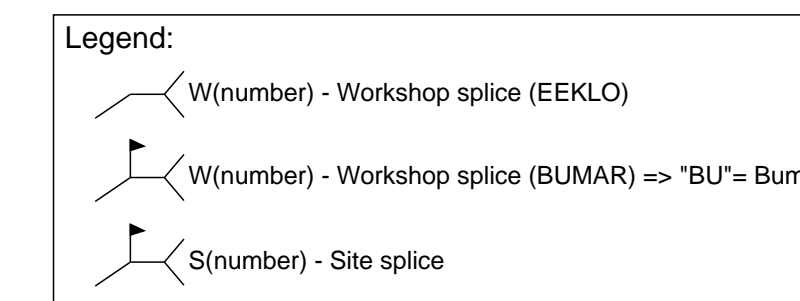
A1 - A1, 1:10

A2 - A2, 1:10

3D - Views South Approach 1 :



For assembly drawings South Approach 1 East : see drawings WPIP-VBS-STR-S30-DR-CB-50-2110-2113
 For assembly drawings South Approach 1 West : see drawings WPIP-VBS-STR-S30-DR-CB-50-2120-2123
 For assembly drawings South Approach 1 Middle : see drawings WPIP-VBS-STR-S30-DR-CB-50-2130-2133



General note :

- Execution :**
- 1 - Steel Quality (EN 10025) :
 - < 30mm: Grade S355J2 +N
 - 30mm < 1 < 40mm: Grade S355K2 +N
 - 1 > 40mm: Grade S355ML
 - Steel hollow sections: grade S355 J2H to IS EN 10210 unless noted otherwise
 - All PFC sections shall be grade S275
 - Stainless steel shall be corrosion resistance class CRC II, grade 1.4404 stainless steel in accordance with BS EN 1993-1-4 annex A, unless noted otherwise.
 - All Z-quality are noted on drawings.
 - Backing strips: grade S235 with a Ceq < 0.43% to be in accordance with EN 1090-2 §7.5.9.2
 - 2 - Welds CLASS :
 - All welds shall be performed continuously around the complete perimeter unless noted otherwise.
 - Dimensions of fillet welds are minimum effective throat thickness unless noted otherwise.
 - Welds according to weld catalogue workshop or worksite
 - WPIP-VBS-STR-S30-DR-SC-50-0002 : Weld catalogue Workshop
 - WPIP-VBS-STR-S30-DR-SC-50-0003 : Weld catalogue Site
 - WPIP-VBS-STR-S30-DR-SC-50-0004 : Ginning drawing
 - Note 1 : Deep penetration fillet welds to be in accordance with EN 1090-2:2018 §12.4.4 (b) ; see detail Note 1
 - 3 - Execution class : EXC3 EN1090-2:2018 :
 - All plates with EXC4 to IS EN 1090-2 and appendix 18/1 shall apply to indicated region at drawings including welds to adjacent panels.
 - 4 - Bolted assemblies :
 - Preloaded high strength friction grip bolts Type HV10.9/10 IS EN ISO 14399-4, Non-preloaded bolts Grade 8.8 IS EN ISO 4017 or 4014 unless noted and fitted with locking nut IS EN ISO 4035.
 - 5 - Shear studs IS EN ISO13918 :
 - All shear studs to be 19mm diameter by 125mm high, Type SD2 studs, grade S235J2+C470
 - 6 - Annotations :
 - Dimensions in mm.
 - 7 - Conservation :
 - WPIP-VBS-STR-S30-DR-SC-50-0005 : Paint Drawing

P01	13.10.2023	PKK	FC	First Issue - For Approval
Issue:	Date:	By:	Checked:	Approved:
Client:	Project Ireland 2040 Building Ireland's Future		Waterford City & County Council Cathair Chaitéar Waterford Cathair Phort Láirge	
Project: WATERFORD CITY PUBLIC INFRASTRUCTURE PROJECT SUSTAINABLE TRANSPORT BRIDGE		Project number: 2865-21		
Title: SOUTH APPROACH 1 General drawing		Paper size: A0		
		Scale: As indicated		
		Projection: 1st angle		
Status Code: S4 - Issued for Construction Approval				
Project	Originator	Volume	Location	Type
WPPI - VBS - STR - S30 - DR - SC - 50 - 2100				
				Revision
				P01