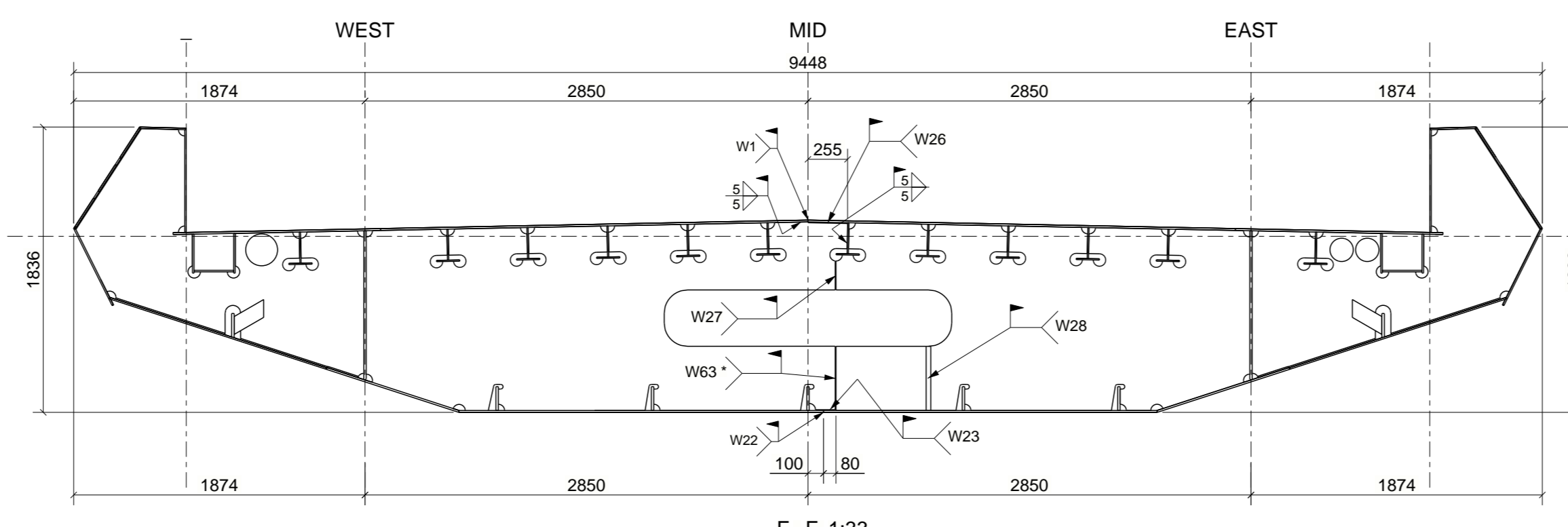
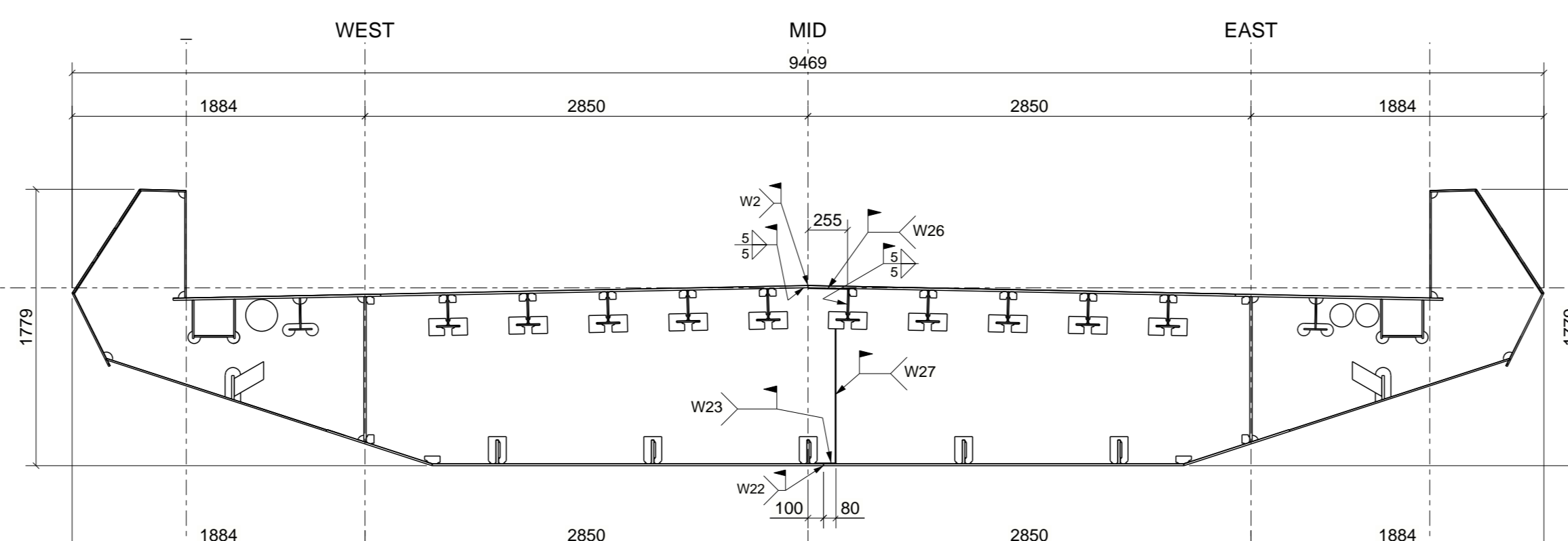


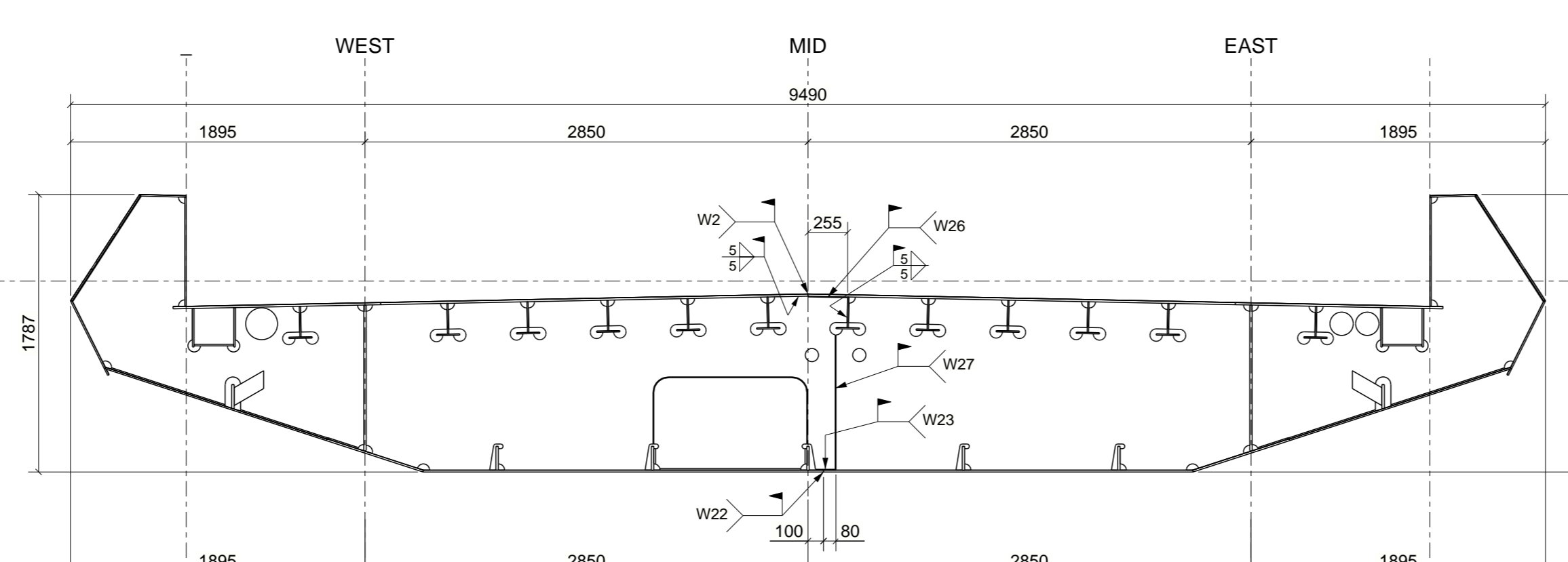
A - A, 1:33
S23



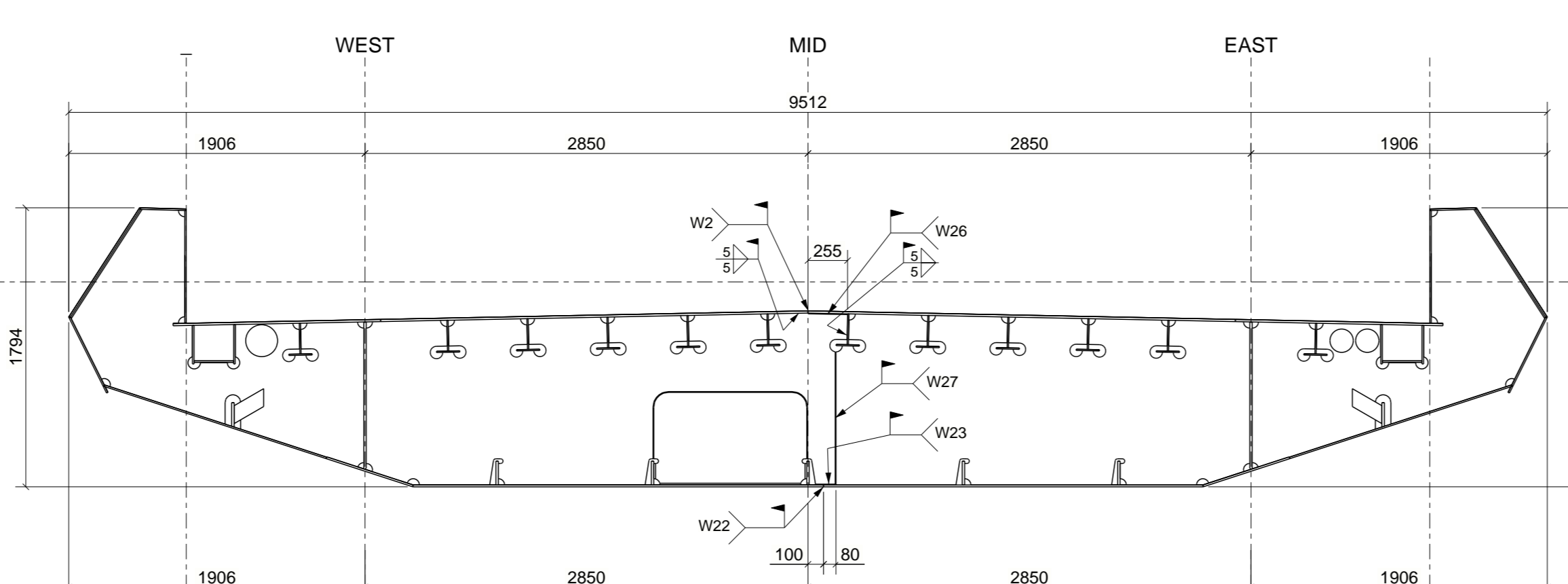
F - F, 1:33
S18



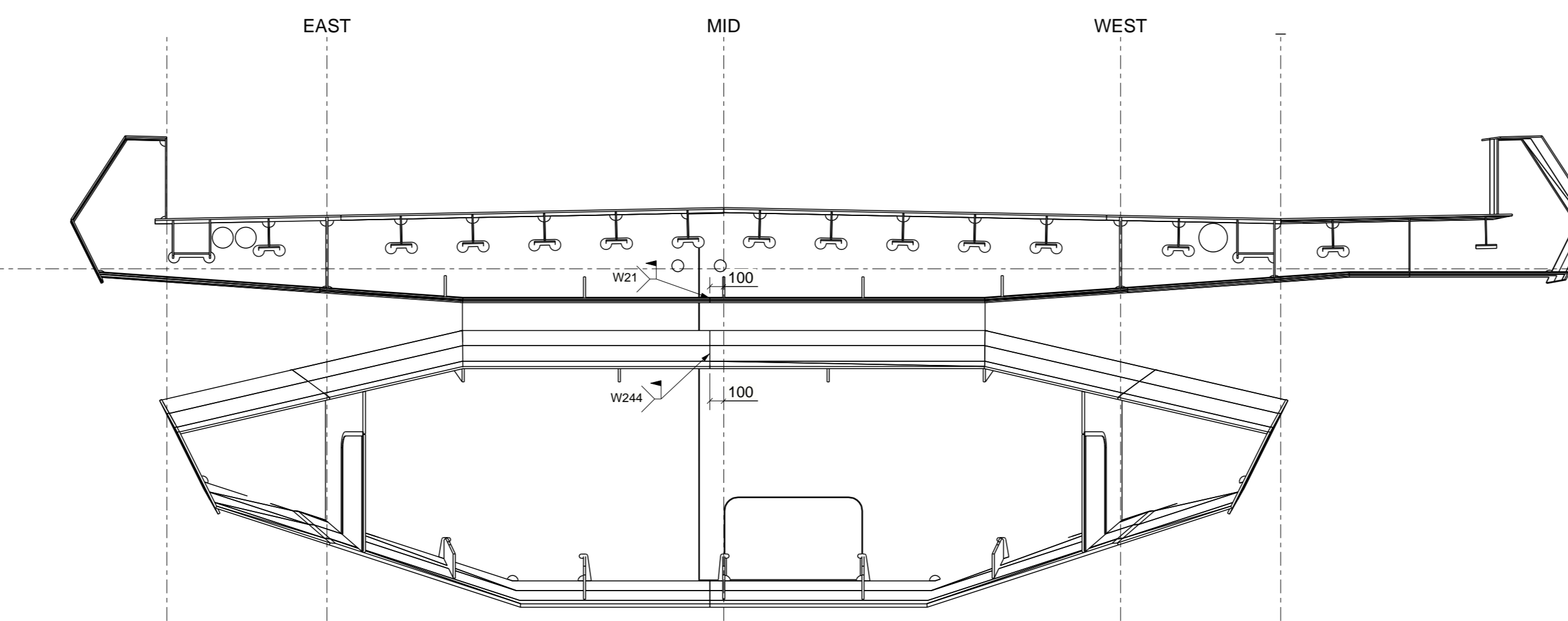
G - G, 1:33
S17



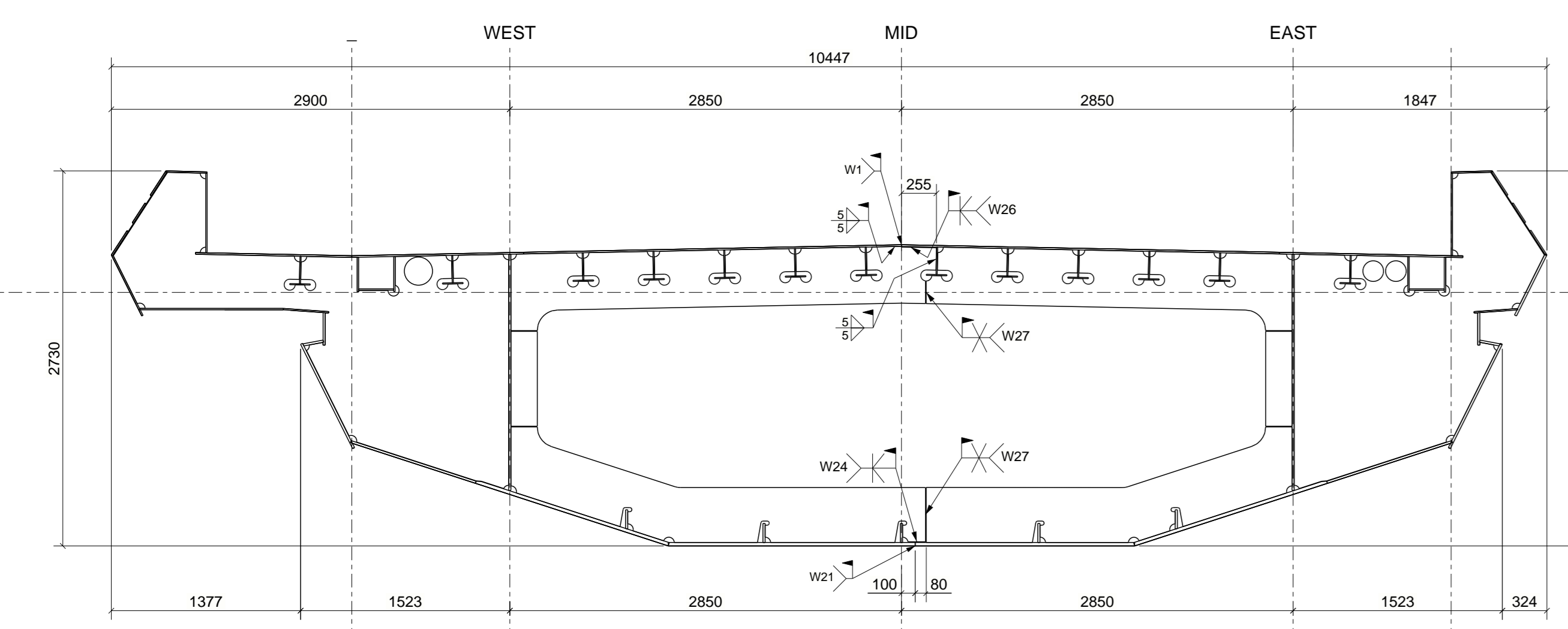
H - H, 1:33
S16



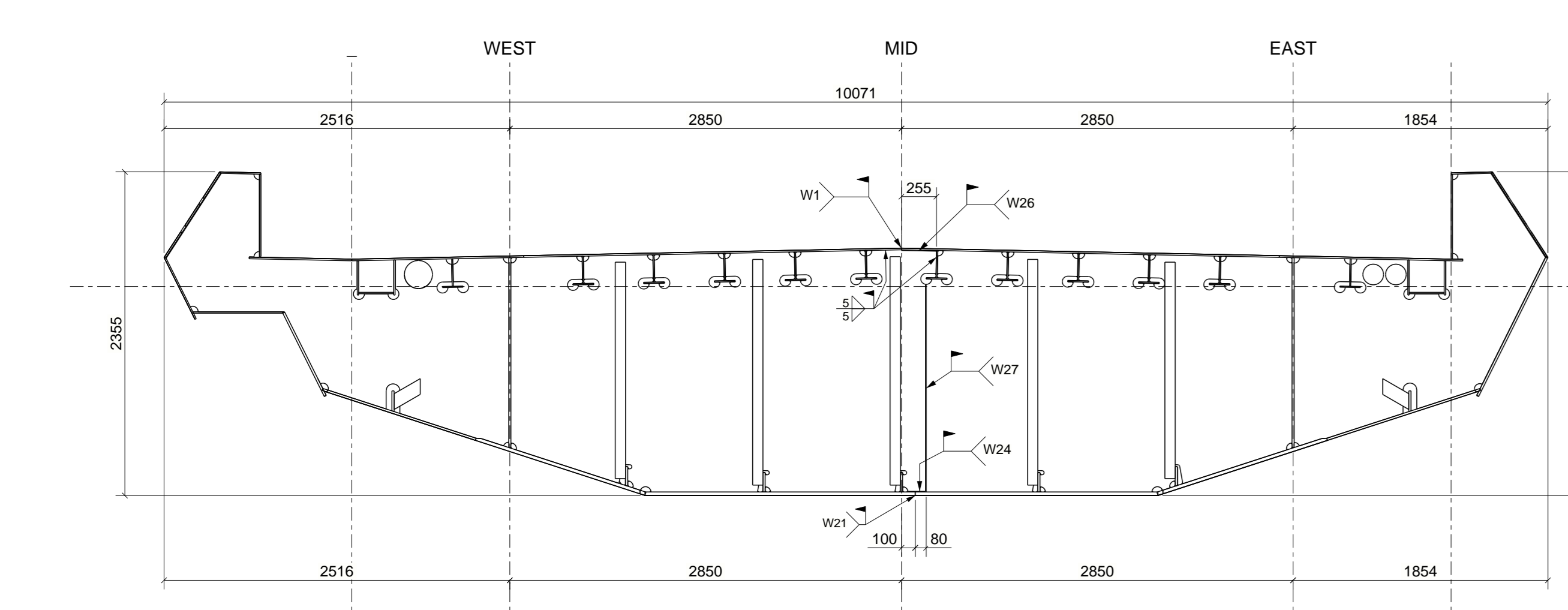
I - I, 1:33
S15



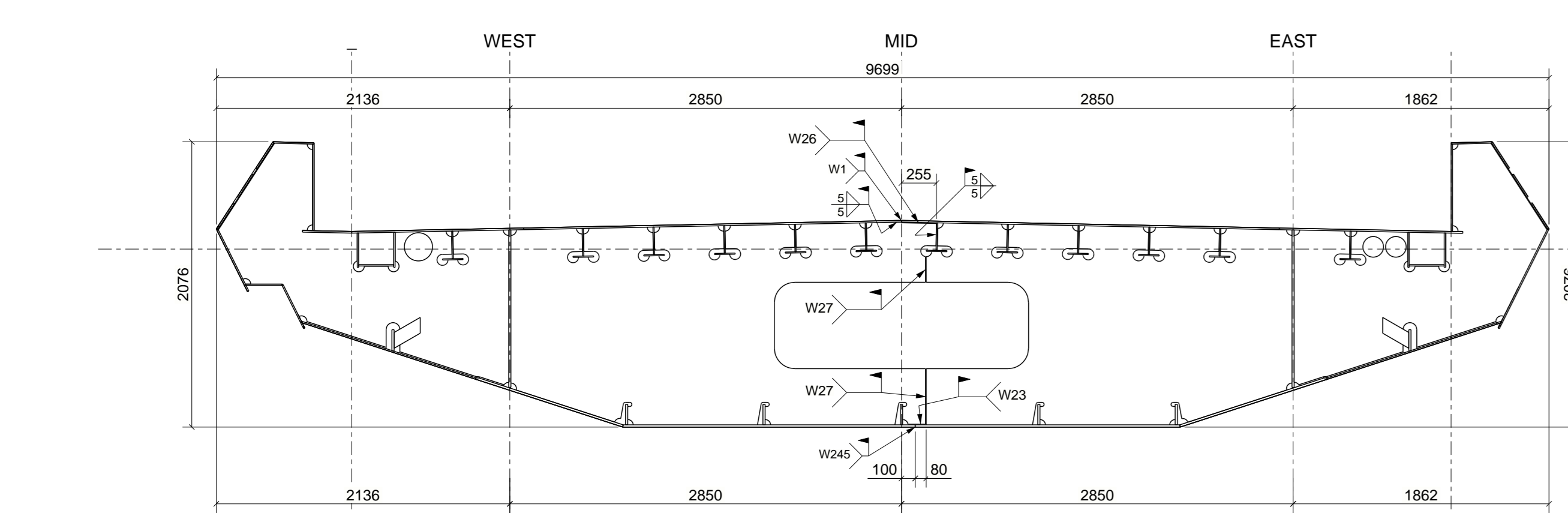
J - J, 1:33



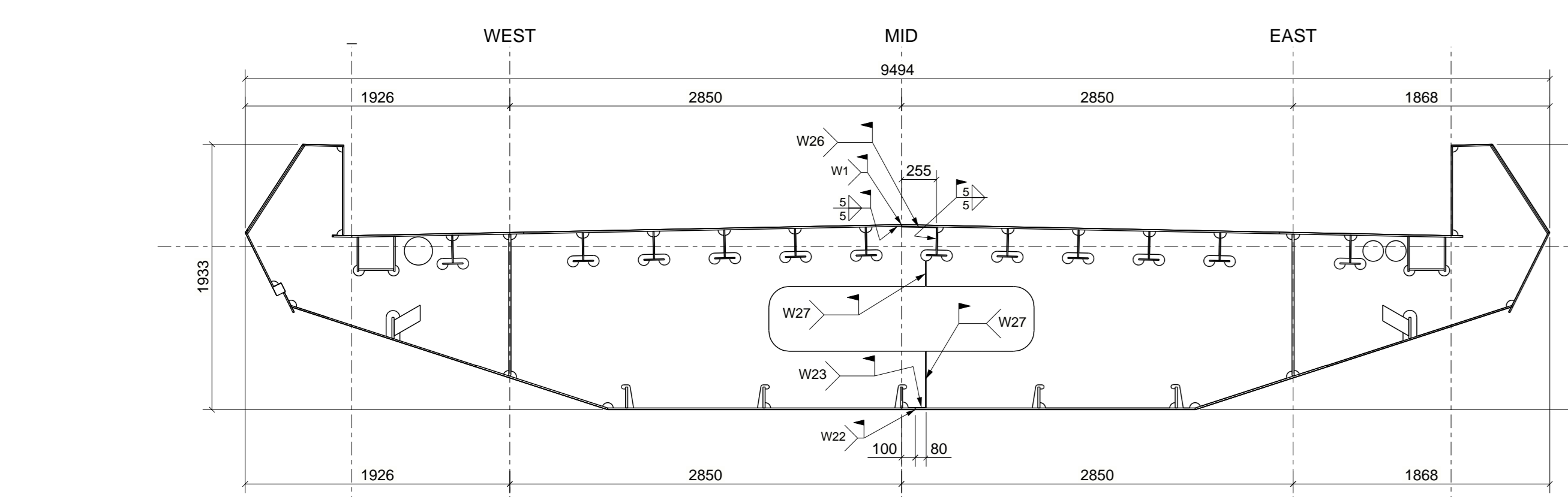
B - B, 1:33
S22



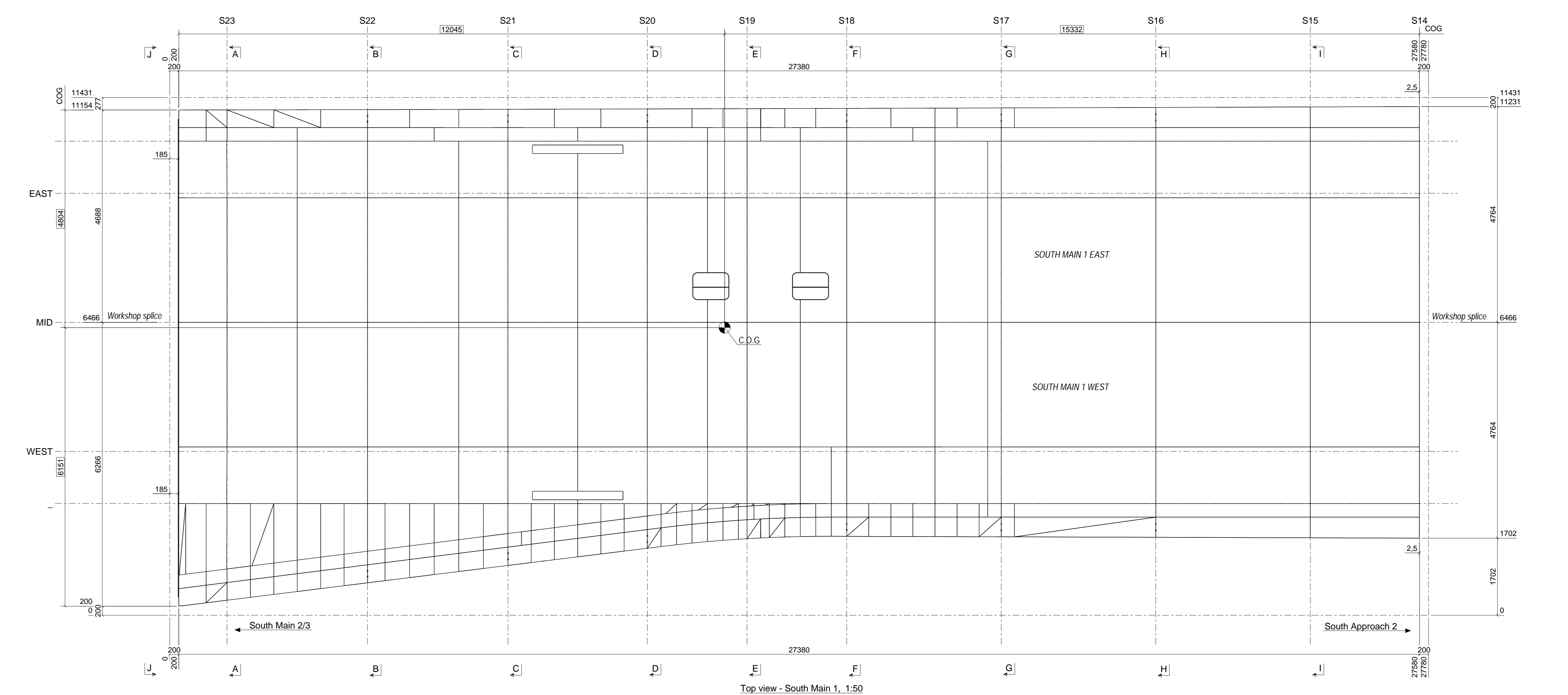
C - C, 1:33
S21



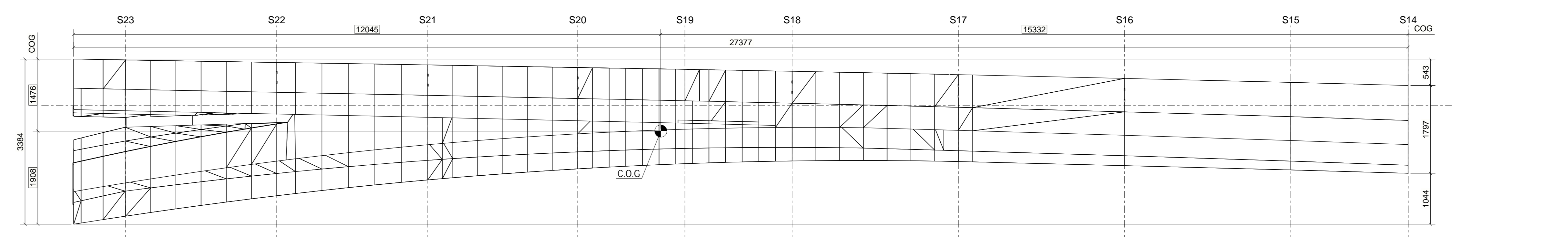
D - D, 1:33
S20



E - E, 1:33
S19

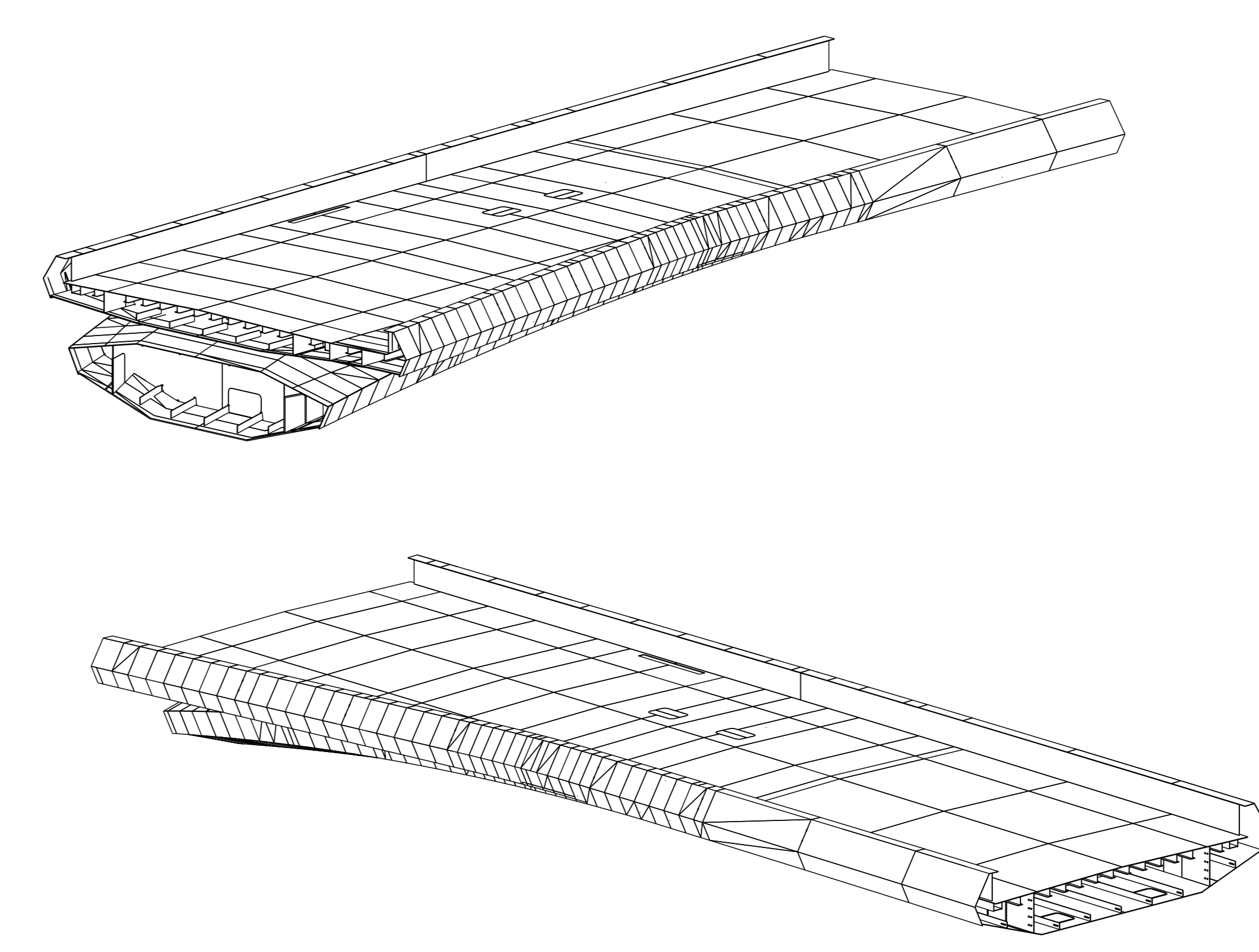


Top view - South Main 1, 1:50



Longitudinal view - South Main 1, 1:50

3D - South Main Approach 1 :



For assembly drawings South Main 1 East : see drawings WPIP-VBS-STR-S30-DR-CB-50-???

For assembly drawings South Main 1 West : see drawings WPIP-VBS-STR-S30-DR-CB-50-???

- Execution :**
- 1 - Steel Quality (EN 10025)
 - 1 x 35mm Grade S355J2 +N
 - 35mm < 1 x 40mm Grade S355K2 +N
 - 1 x 40mm Grade S355K4
 - Steel hollow sections: grade S355 J2H to IS EN 10210 unless noted otherwise
 - All PFC sections shall be grade S275
 - Stainless steel shall be corrosion resistance class CRC II, grade 1.4404 stainless steel in accordance with BS EN 1993-1-4 annex A, unless noted otherwise.
 - All Z-qualify are noted on drawings.
 - Backing strip: grade S235 with a Ceq (0.43%) to be in accordance with EN 1090-2 §7.5.9.2
- 2 - Welds CLASS 3 :**
- All welds shall be performed continuously around the complete perimeter unless noted otherwise.
 - Dimensions of fillet welds are minimum effective throat thickness unless noted otherwise.
 - Welds according to weld catalogue workshop or worksite
- 3 - Execution class : EXC3 EN 1090-2:2018 :**
- All plates with EN 10161 to IS EN 1090-2 and appendix 1B1 shall apply to indicated region at drawings including welds to adjacent parts.
- 4 - Bolted assemblies:**
- Preloaded high strength friction grip bolts Type H10.9/10 IS EN ISO 14399-4.
 - Non-preloaded high strength bolts 8.8 IS EN ISO 4017 or 4014 unless noted and fitted with locking nut IS EN ISO 4035.
- 5 - Shear studs IS EN ISO 12118 :**
- All shear studs to be 19mm diameter by 125mm high, Type S02 studs, grade S235J2+C470
- 6 - Annotations:**
- Dimensions in mm.
- 7 - Conservation :**
- WPIP-VBS-STR-S30-DR-SC-50-005 - Paint Drawing

General note :

Project	Originator	Volume	Location	Type	Revision
WPIP - VBS - STR - S30 - DR - SC - 50 - 2300					

Project	Originator	Volume	Location	Type	Revision
WPIP - VBS - STR - S30 - DR - SC - 50 - 2300					

Project	Originator	Volume	Location	Type	Revision
WPIP - VBS - STR - S30 - DR - SC - 50 - 2300					

Project	Originator	Volume	Location	Type	Revision
WPIP - VBS - STR - S30 - DR - SC - 50 - 2300					

Project	Originator	Volume	Location	Type	Revision
WPIP - VBS - STR - S30 - DR - SC - 50 - 2300					

Project	Originator	Volume	Location	Type	Revision
WPIP - VBS - STR - S30 - DR - SC - 50 - 2300					

Project	Originator	Volume	Location	Type	Revision
WPIP - VBS - STR - S30 - DR - SC - 50 - 2300					

Project	Originator	Volume	Location	Type	Revision
WPIP - VBS - STR - S30 - DR - SC - 50 - 2300					

Project	Originator	Volume	Location	Type	Revision
WPIP - VBS - STR - S30 - DR - SC - 50 - 2300					

Project	Originator	Volume	Location	Type	Revision
WPIP - VBS - STR - S30 - DR - SC - 50 - 2300					

Project	Originator	Volume	Location	Type	Revision
WPIP - VBS - STR - S30 - DR - SC - 50 - 2300					

Project	Originator	Volume	Location	Type	Revision
WPIP - VBS - STR - S30 - DR - SC - 50 - 2300					

Project	Originator	Volume	Location	Type	Revision
WPIP - VBS - STR - S30 - DR - SC - 50 - 2300					

Project	Originator	Volume	Location	Type	Revision
WPIP - VBS - STR - S30 - DR - SC - 50 - 2300					

Project	Originator	Volume	Location	Type	Revision
WPIP - VBS - STR - S30 - DR - SC - 50 - 2300					

Project	Originator	Volume	Location	Type	Revision
WPIP - VBS - STR - S30 - DR - SC - 50 - 2300					

Project	Originator	Volume	Location	Type	Revision
WPIP - VBS - STR - S30 - DR - SC - 50 - 2300					

Project	Originator	Volume	Location	Type	Revision
WPIP - VBS - STR - S30 - DR - SC - 50 - 2300					

Project	Originator	Volume	Location	Type	Revision
WPIP - VBS - STR - S30 - DR - SC - 50 - 2300					

Project	Originator	Volume	Location	Type	Revision
WPIP - VBS - STR - S30 - DR - SC - 50 - 2300					

Project	Originator	Volume	Location	Type	Revision
WPIP - VBS - STR - S30 - DR - SC - 50 - 2300					

Project	Originator	Volume	Location	Type	Revision
WPIP - VBS - STR - S30 - DR - SC - 50 - 2300					

Project	Originator	Volume	Location	Type	Revision
WPIP - VBS - STR - S30 - DR - SC - 50 - 2300					

Project	Originator	Volume	Location	Type	Revision
WPIP - VBS - STR - S30 - DR - SC - 50 - 2300					

Project	Originator	Volume	Location	Type	Revision
WPIP - VBS - STR - S30 - DR - SC - 50 - 2300					

Project	Originator	Volume	Location	Type	Revision
WPIP - VBS - STR - S30 - DR - SC - 50 - 2300					

Project	Originator	Volume	Location	Type	Revision
WPIP - VBS - STR - S30 - DR - SC - 50 - 2300					

Project	Originator	Volume	Location	Type	Revision
WPIP - VBS - STR - S30 - DR - SC - 50 - 2300					

Project	Originator	Volume	Location	Type	Revision
WPIP - VBS - STR - S30 - DR - SC - 50 - 2300					

Project	Originator	Volume	Location	Type	Revision
WPIP - VBS - STR - S30 - DR - SC - 50 - 2300					

Project	Originator	Volume	Location	Type	Revision
WPIP - VBS - STR - S30 - DR - SC - 50 - 2300					

Project	Originator	Volume	Location	Type	Revision
WPIP - VBS - STR - S30 - DR - SC - 50 - 2300					

Project	Originator	Volume	Location	Type	Revision
WPIP - VBS - STR - S30 - DR - SC - 50 - 2300					

Project	Originator	Volume	Location	Type	Revision
WPIP - VBS - STR - S30 - DR - SC - 50 - 2300					

Project	Originator	Volume	Location	Type	Revision
WPIP - VBS - STR - S30 - DR - SC - 50 - 2300					

Project	Originator	Volume	Location	Type	Revision
WPIP - VBS - STR - S30 - DR - SC - 50 - 2300					

Project	Originator	Volume	Location	Type	Revision
WPIP - VBS - STR - S30 - DR - SC - 50 - 2300					

Project	Originator	Volume	Location	Type	Revision
WPIP - VBS - STR - S30 - DR - SC - 50 - 2300					

Project	Originator	Volume	Location	Type	Revision
WPIP - VBS - STR - S30 - DR - SC - 50 - 2300					

Project	Originator	Volume	Location	Type	Revision
WPIP - VBS - STR - S30 - DR - SC - 50 - 2300					

Project	Originator	Volume	Location	Type	Revision
WPIP - VBS - STR - S30 - DR - SC - 50 - 2300					

Project	Originator	Volume	Location	Type	Revision
WPIP - VBS - STR - S30 - DR - SC - 50 - 2300					

Project	Originator	Volume	Location	Type	Revision
WPIP - VBS - STR - S30 - DR - SC - 50 - 2300					

Project	Originator	Volume	Location	Type	Revision
WPIP - VBS - STR - S30 - DR - SC - 50 - 2300					

Project	Originator	Volume	Location	Type	Revision
WPIP - VBS - STR - S30 - DR - SC - 50 - 2300					

Project	Originator	Volume	Location	Type	Revision
WPIP - VBS - STR - S30 - DR - SC - 50 - 2300					

Project	Originator	Volume	Location	Type	Revision
WPIP - VBS - STR - S30 - DR - SC - 50 - 2300					

Project	Originator	Volume	Location	Type	Revision
WPIP - VBS - STR - S30 - DR - SC - 50 - 2300					

Project	Originator	Volume	Location	Type	Revision
WPIP - VBS - STR - S30 - DR - SC - 50 - 2300					

Project	Originator	Volume	Location	Type	Revision
WPIP - VBS - STR - S30 - DR - SC - 50 - 2300					

Project	Originator	Volume	Location	Type	Revision
WPIP - VBS - STR - S30 - DR - SC - 50 - 2300					

Project	Originator	Volume	Location	Type	Revision
WPIP - VBS - STR - S30 - DR - SC - 50 - 2300					

Project	Originator	Volume	Location	Type	Revision
WPIP - VBS - STR - S30 - DR - SC - 50 - 2300					

Project	Originator	Volume	Location	Type	Revision
WPIP - VBS - STR - S30 - DR - SC - 50 - 2300					

Project	Originator	Volume	Location	Type	Revision
WPIP - VBS - STR - S30 - DR - SC - 50 - 2300					

Project	Originator	Volume	Location	Type	Revision
WPIP - VBS - STR - S30 - DR - SC - 50 - 2300					

Project	Originator	Volume	Location	Type	Revision
WPIP - VBS - STR - S30 - DR - SC - 50 - 2300					

Project	Originator	Volume	Location	Type	Revision
WPIP - VBS - STR - S30 - DR - SC - 50 - 2300					

Project	Originator	Volume	Location	Type	Revision
WPIP - VBS - STR - S30 - DR - SC - 50 - 2300					

Project	Originator	Volume	Location	Type	Revision
WPIP - VBS - STR - S30 - DR - SC - 50 - 2300					

Project	Originator	Volume	Location	Type	Revision
WPIP - VBS - STR - S30 - DR - SC - 50 - 2300					

Project	Originator	Volume	Location	Type	Revision
WPIP - VBS - STR - S30 - DR - SC - 50 - 2300					

Project	Originator	Volume	Location	Type	Revision
WPIP - VBS - STR - S30 - DR - SC - 50 - 2300					

Project	Originator	Volume	Location	Type	Revision
WPIP - VBS - STR - S30 - DR - SC - 50 - 2300					

Project	Originator	Volume	Location	Type	Revision
WPIP - VBS - STR - S30 - DR - SC - 50 - 2300					

Project	Originator	Volume	Location	Type	Revision
WPIP - VBS - STR - S30 - DR - SC - 50 - 2300					

Project	Originator	Volume	Location	Type	Revision
WPIP - VBS - STR - S30 - DR - SC - 50 - 2300					

Project	Originator	Volume	Location	Type	Revision
WPIP - VBS - STR - S30 - DR - SC - 50 - 2300					

Project	Originator	Volume	Location	Type	Revision
WPIP - VBS - STR - S30 - DR - SC - 50 - 2300					

Project	Originator	Volume	Location	Type	Revision
WPIP - VBS - STR - S30 - DR - SC - 50 - 2300					

Project	Originator	Volume	Location	Type	Revision
WPIP - VBS - STR - S30 - DR - SC - 50 - 2300					

Project	Originator	Volume	Location	Type	Revision
WPIP - VBS - STR - S30 - DR - SC - 50 - 2300					

Project	Originator	Volume	Location	Type	Revision
WPIP - VBS - STR - S30 - DR - SC - 50 - 2300					

Project	Originator	Volume	Location	Type	Revision
WPIP - VBS - STR - S30 - DR - SC - 50 - 2300					

Project	Originator	Volume	Location	Type	Revision
WPIP - VBS - STR - S30 - DR - SC - 50 - 2300					