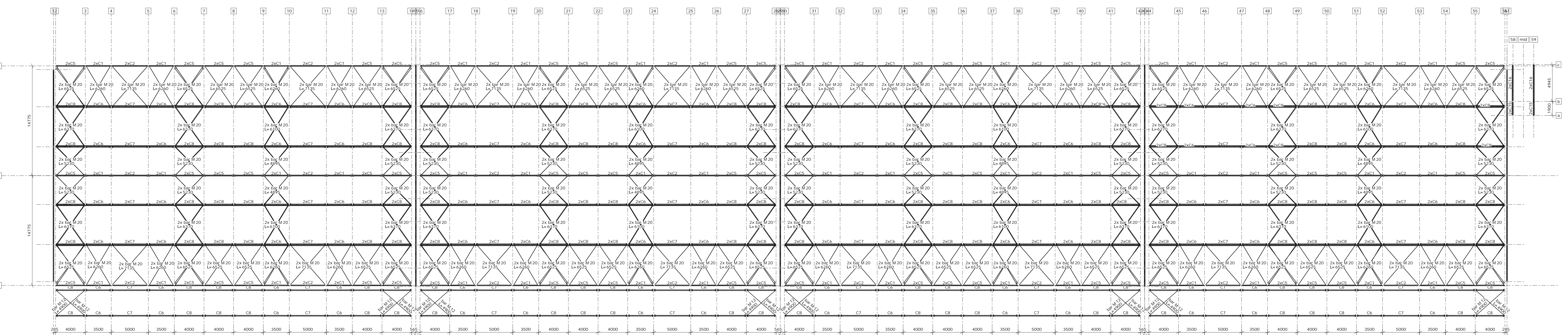
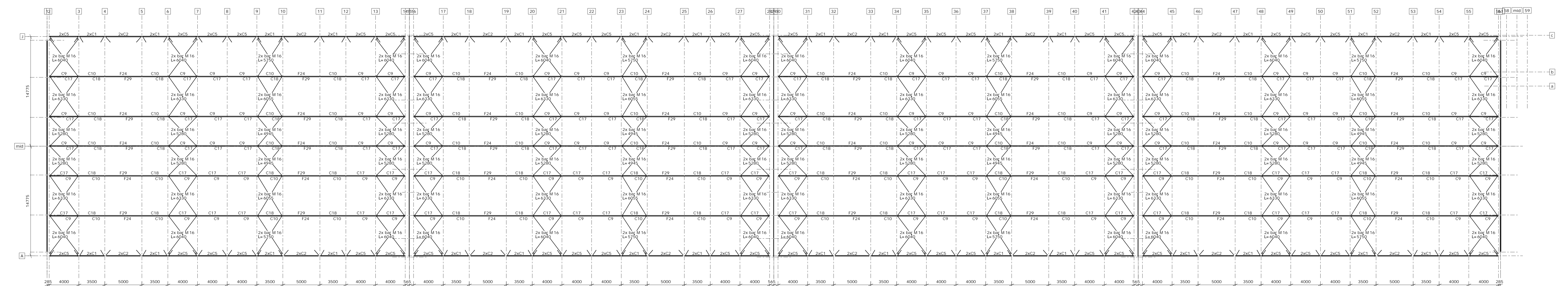


Plan acoperis: pane  
1:200



Plan acoperis: contravanturi  
1:200



Plan cota +8.00: contravanturi  
1:200

**roof rigins**

44	P1	ZW180X2.0	L = 5247.5
44	P2	ZW180X2.0	L = 4465.0
32	P3	ZW180X2.0	L = 4165.0
44	P4	ZW180X2.0	L = 5165.0
12	P5	ZW180X2.0	L = 5145.0
4	P6	ZW180X2.0	L = 5247.5
5	P7	ZW180X2.0	L = 2682.5
5	P8	ZW180X2.0	L = 5722.0
396	Z1	Z120X2.0	L = 5165.0
352	Z2	Z120X2.0	L = 4465.0
176	Z3	Z120X2.0	L = 4165.0
66	Z4	Z120X2.0	L = 4810.5
66	Z5	Z120X2.0	L = 4810.5

**wood trams**

96	C1	C120X1.5	L = 3084.5
48	C2	C120X2.0	L = 4584.5
48	C3	C120X1.5	L = 3312.0
96	C4	C120X1.5	L = 3812.0
144	C5	C120X1.5	L = 3584.5
160	C6	C120X1.5	L = 3234.0
80	C7	C120X2.0	L = 4734.0
240	C8	C120X1.5	L = 3734.0
120	C9	C120X2.0	L = 3955.0
80	C10	C120X2.0	L = 3495.0
16	C14	C120X2.0	L = 4812.5
4	C15	C120X1.5	L = 1722.0
4	C16	C120X1.5	L = 4767.0
100	C17	C120X2.0	L = 3860.0
80	C18	C120X2.0	L = 3262.5
24	C19	C120X2.0	L = 5212.0
12	C20	C120X2.0	L = 3707.0
12	C21	C120X2.0	L = 3499.5
24	C22	C120X2.0	L = 4801.0
40	F24	C130X1.5	L = 4995.0
24	F25	C130X1.5	L = 5012.5
78	F26	C130X1.5	L = 2922.5
4	F27	C130X1.5	L = 2403.0
18	F28	C130X1.5	L = 2322.5
40	F29	C130X1.5	L = 4862.5