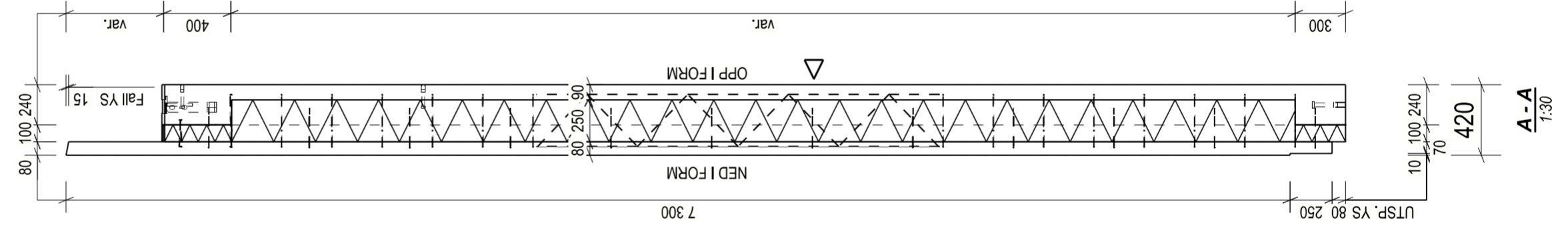
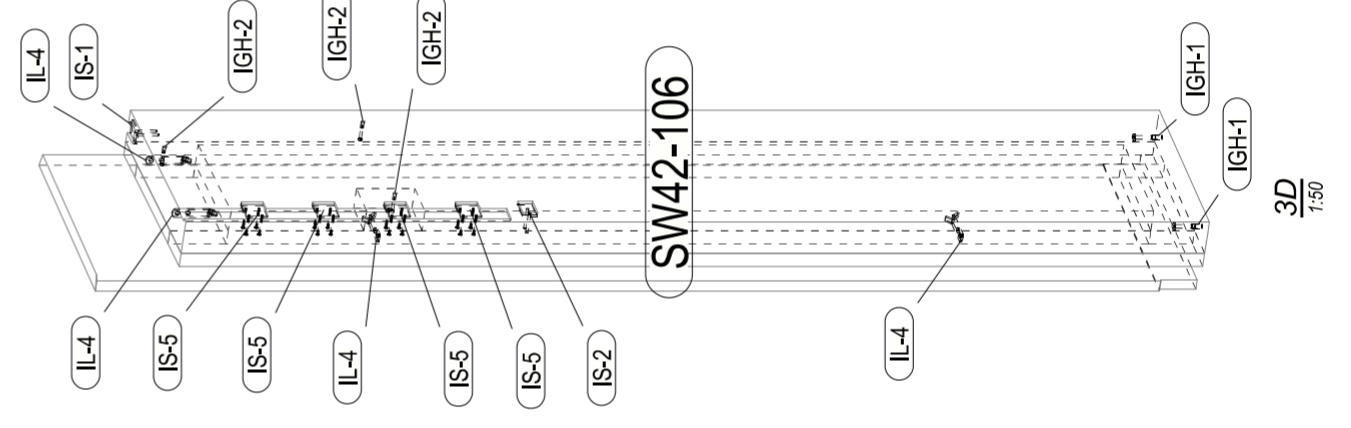


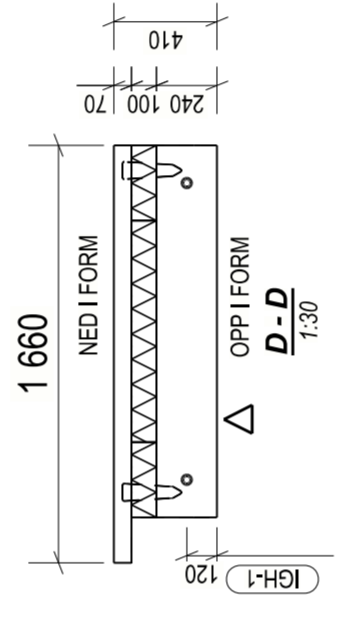
OPPRISSE OPP I FORM
1:30



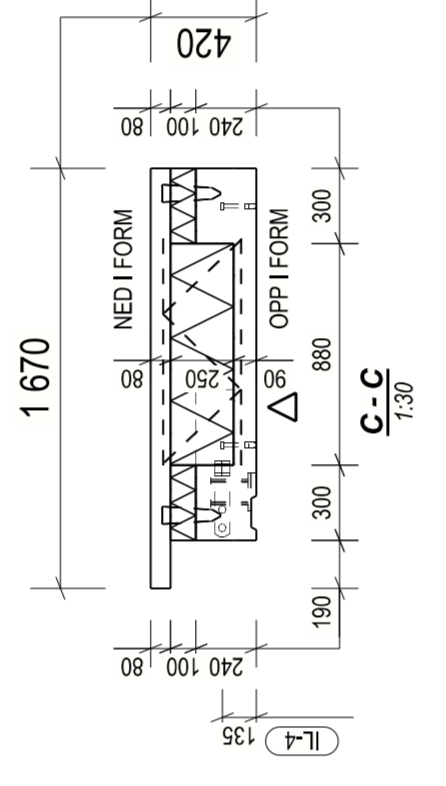
A-A
1:30



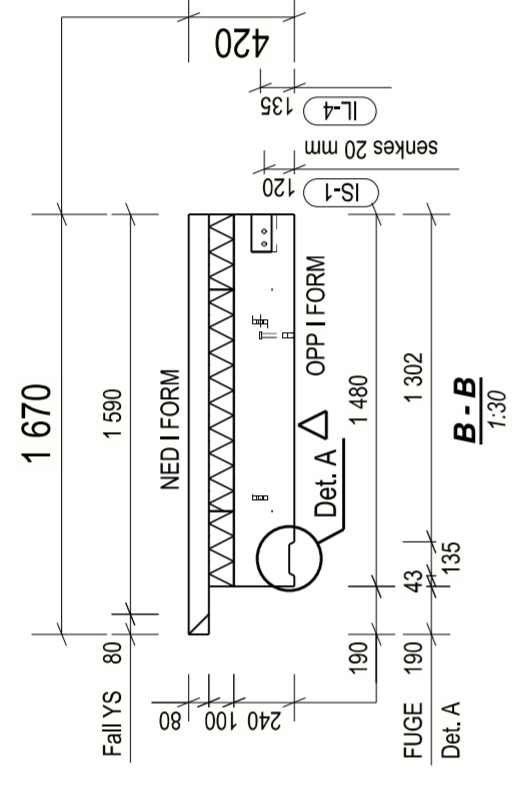
3D
1:30



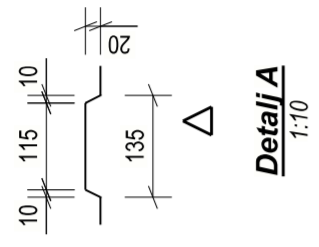
D-D
1:30



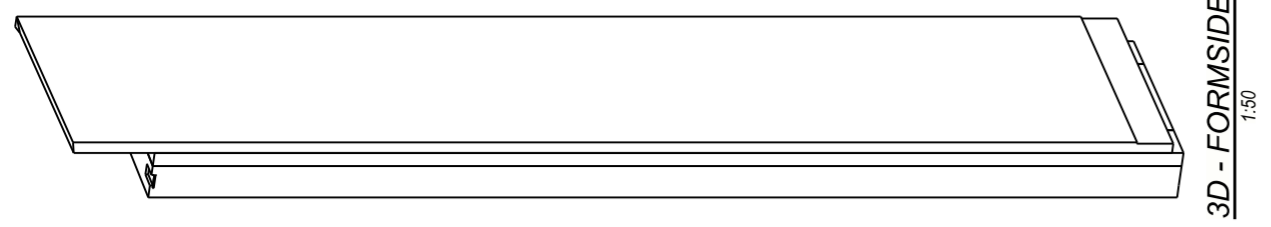
C-C
1:30



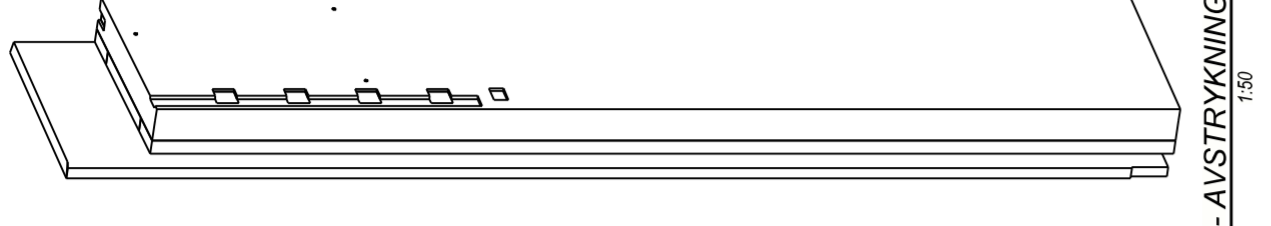
B-B
1:30



Detail A
1:10



3D - FORMSIDE
1:30



3D - AVSTRYKNINGSSIDE
1:30

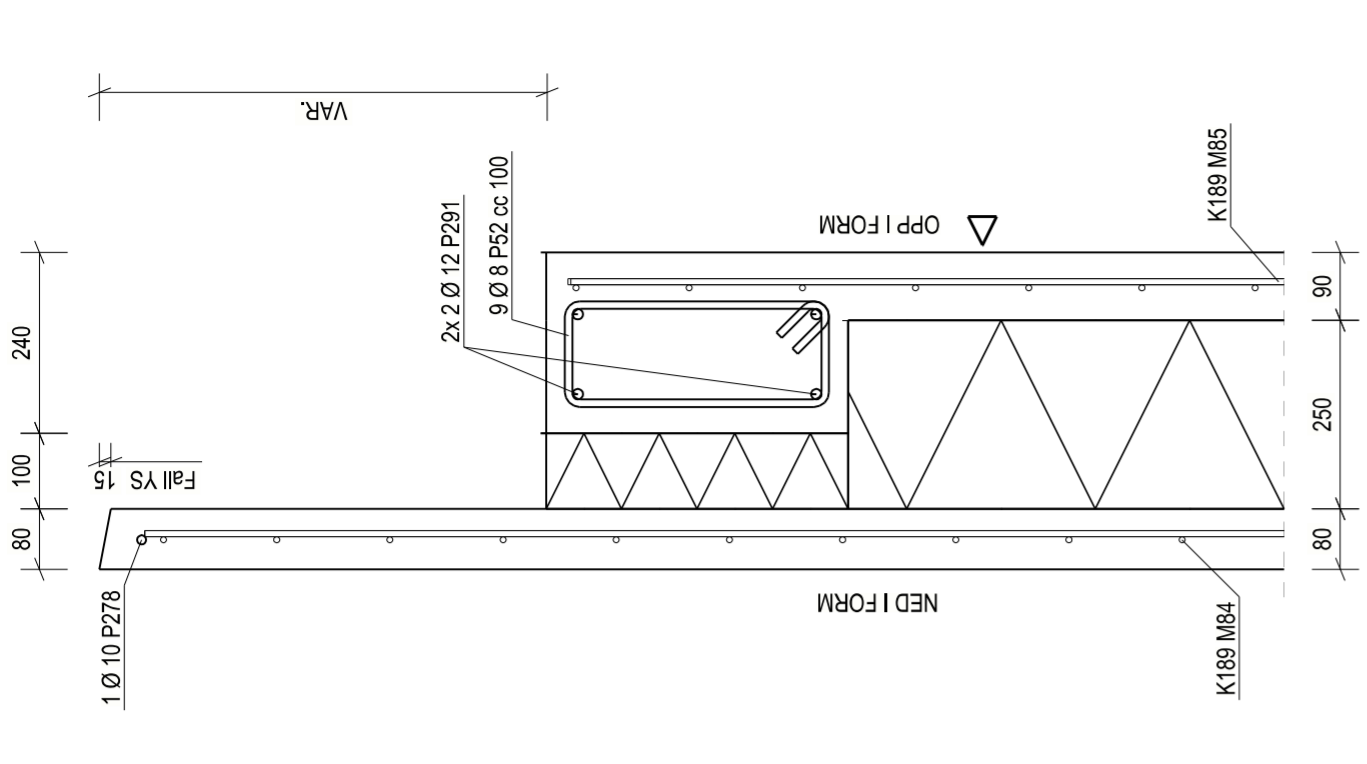
AVFORMING PÅ PRODUKSJON:
LØFTESYSTEM



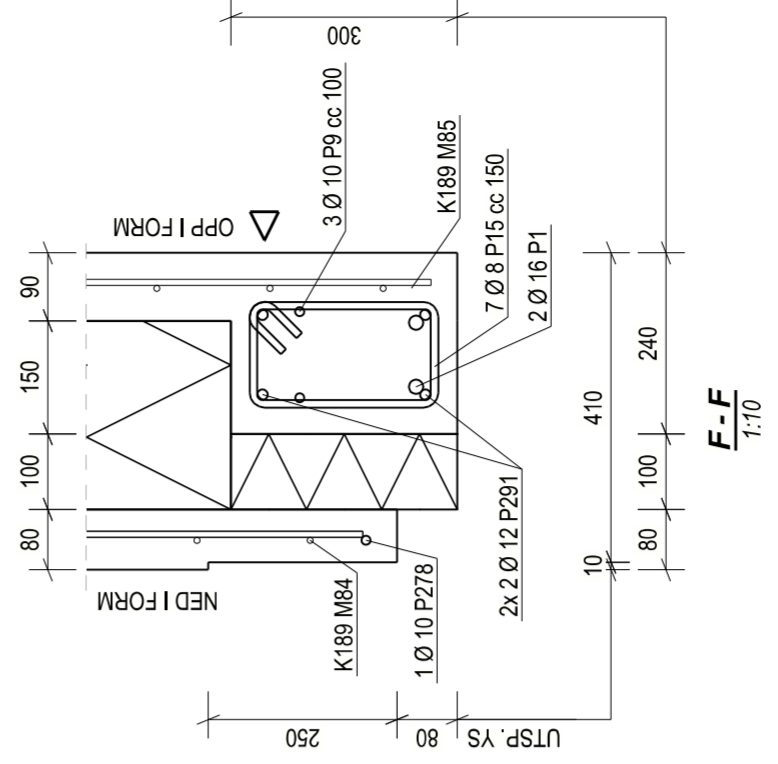
ARMERING LØFT

ARMERING					
Pos	Ant.	Kval.	Dia.	Lengde	Form
P1	8	B500NC	16	965	500
P8	4	B500NC	10	1215	550
P9	6	B500NC	10	1285	600
P12	4	B500NC	10	980	500
P15	7	B500NC	8	860	250
P31	2	B500NC	10	7465	7465
P51	96	B500NC	8	920	240
P52	9	B500NC	8	1060	350
P278	2	B500NC	10	1550	1550
P291	8	B500NC	12	1380	1380
P292	4	B500NC	16	6965	6965
P293	4	B500NC	16	7000	7000
P301	4	B500NC	10	1090	500
M84	1	B500NA	K189	1580 x 7445	Areal = 11,8m ²
M85	1	B500NA	K189	1410 x 6988	Areal = 9,8m ²

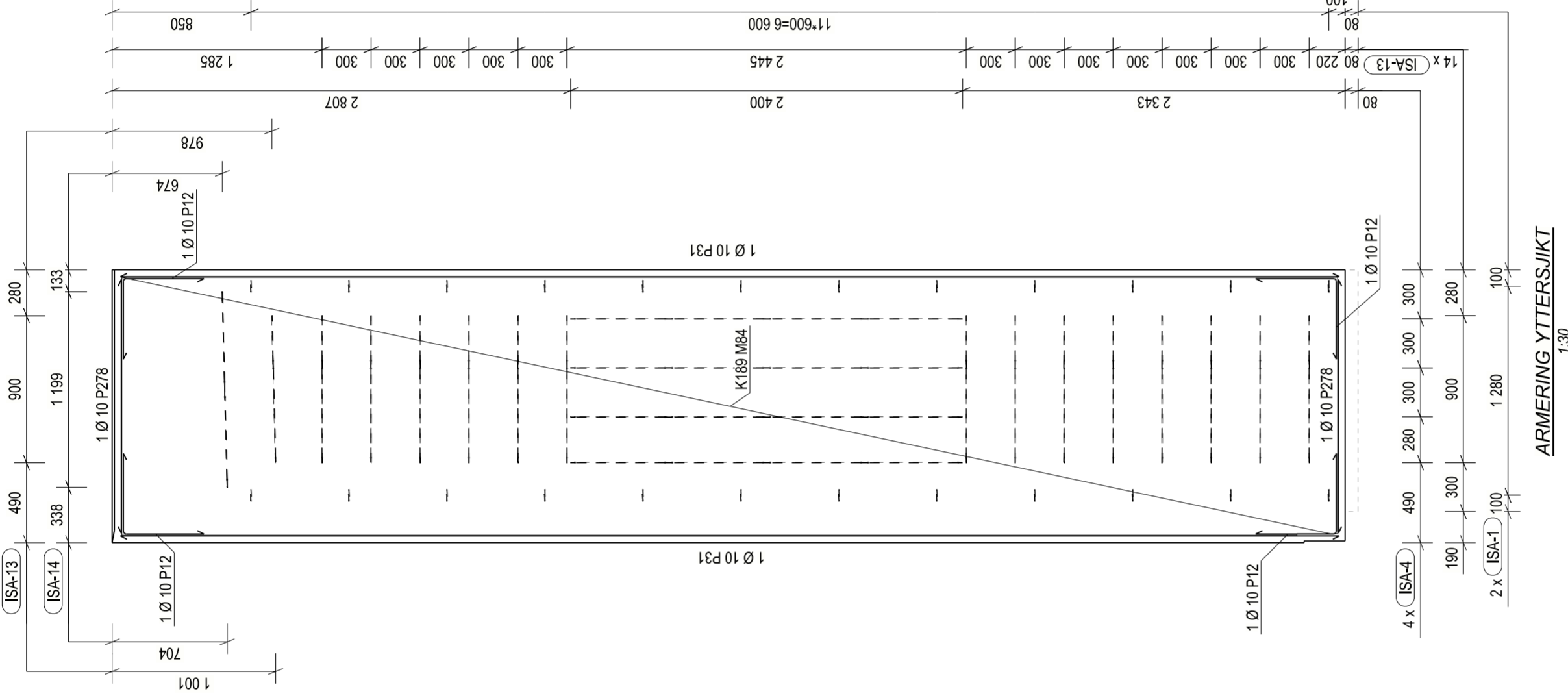
Total vekt kamstål: 175,2 kg
Total vekt nett: 62,6 kg



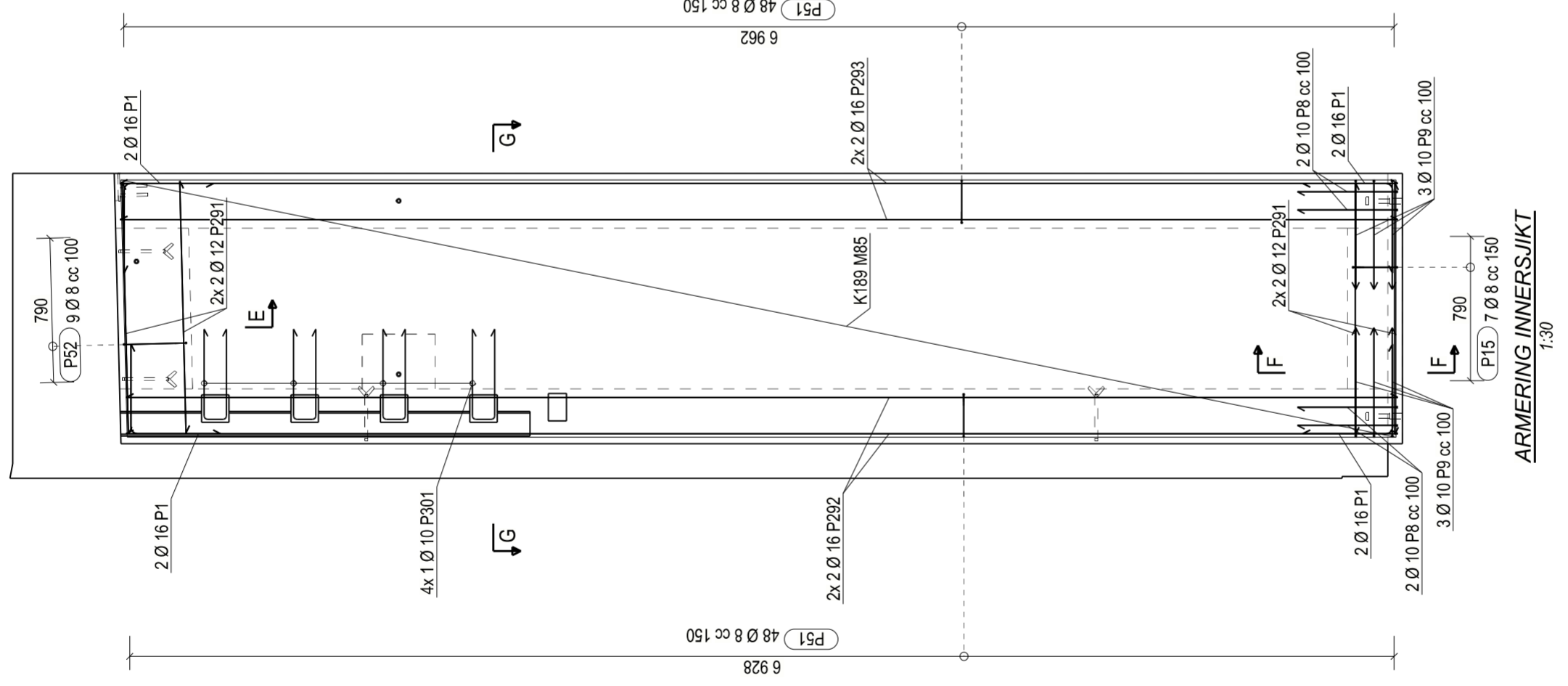
E-E
1:10



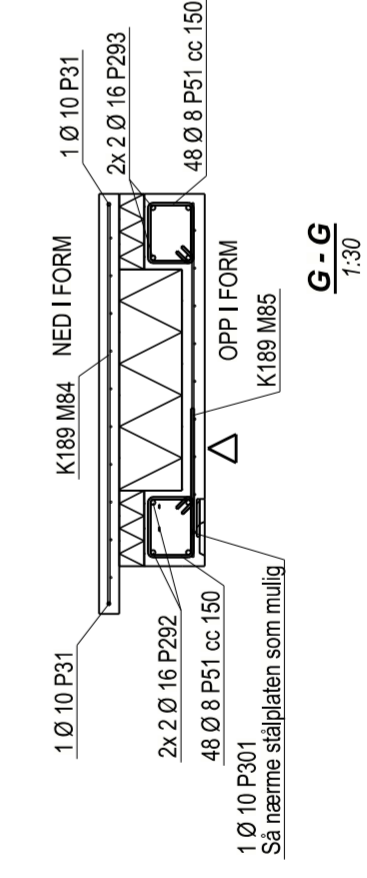
F-F
1:10



ARMERING YTTERSJIKT
1:30



ARMERING INNERSJIKT
1:30



G-G
1:30

1 Ø 10 P301
Så nærme stålplaten som mulig.